

TO BE CONSTRUCTED IN
TRACT NO 34143
 PRIVATE CONTRACT NO. 5701

W.S. C-2
 8 SHEETS, 15 PAGES
 SCALE: VERT. 1" = 4'
 HORIZ. 1" = 40'
 APRIL, 1970
 PREPARED IN THE OFFICES OF
 LIND & HILLERBRAND, INC.
 2066 HATFIELD DR.
 SAN MARINO, CA 91088
 REG. C. E. NO. 12233

49278

- GENERAL NOTES:**
- ELEVATIONS ARE IN FEET ABOVE U.S.C. & G.S. MEAN SEA LEVEL DATUM OF 1929.
 - NO REVISIONS SHALL BE MADE IN THESE PLANS WITHOUT THE APPROVAL OF THE COUNTY ENGINEER.
 - NO REPRESENTATION OF THE COUNTY ENGINEER SHALL BE MADE ON THESE PLANS OR PROFILES GRADE POINTS FOR TOP OF GRADES TO WHICH THE MOVEMENT IS TO BE CONSTRUCTED ARE SHOWN ON PLANS AND PROFILES AT ALL POINTS BETWEEN BEING CURVE, CENTER LINE OF STREETS, OR CENTER LINE OF ALLEYS ARE SHOWN BY CIRCLES ON PROFILES AT ALL POINTS BETWEEN BEING MATTER POINTS THE GRADE SHALL BE ESTABLISHED SO AS TO CONFORM TO A STRAIGHT LINE BETWEEN SAID DESIGNATED POINTS.
 - THE PRIVATE ENGINEER SHALL FURNISH THE COUNTY ENGINEER WITH GRADE SHEETS AND STATIONING FOR ALL HOUSE LATERALS AND "T" OR "Y" BRANCHES AND SHALL PROVIDE STAKES FOR THEM AT THEIR PROPER LOCATIONS WITH STATIONING PLAINLY MARKED. ALL HOUSE LATERALS SHALL BE CONSTRUCTED IN A STRAIGHT ALIGNMENT AT RIGHT ANGLES FROM THE MAIN LINE SEWER EXCEPT AS SHOWN ON THE PLANS. HOUSE LATERALS FROM CURBS SHALL NOT HAVE AN ANGLE OF LESS THAN 45° WITH THE MAIN LINE SEWER. ANY CHANGE IN ALIGNMENT SHALL BE INDICATED BY WRITING IN WRITING BY THE PRIVATE ENGINEER.
 - THE PRIVATE ENGINEER SHALL FURNISH THE COUNTY ENGINEER WITH THE HOUSE LATERAL BOWNS AT THE PROPERTY LINE BELOW THE TOP OF CURB ELEVATION FOR EACH HOUSE LATERAL ON THE GRADE SHEET.
 - BEFORE WORK CAN BE STARTED, THE CONTRACTOR MUST OBTAIN A PERMIT TO EXCAVATE IN COUNTY STREETS FROM THE L.A. COUNTY ROAD DEPT., DISTRICT OFFICE NO. 15, AND PAY A FEE TO THE COUNTY ENGINEER, 550 S. YERBERT AVENUE, LOS ANGELES, TO COVER THE COST OF CONSTRUCTION INSPECTION AND RECORD PLANS.
 - IF WORK IS TO BE DONE IN A STATE HIGHWAY, A PERMIT MUST BE OBTAINED FROM THE STATE OF CALIFORNIA, DIVISION OF HIGHWAYS, 130 SOUTH SHORE STREET, LOS ANGELES, CALIFORNIA.
 - APPROVAL OF THIS PLAN BY THE COUNTY OF LOS ANGELES DOES NOT CONSTITUTE A REPRESENTATION AS TO THE ACCURACY OF THE LOCATION OF OR THE EXISTENCE OR NON-EXISTENCE OF ANY UNDERGROUND UTILITY PIPE, OR STRUCTURE WITHIN THE LIMITS OF THIS PROJECT. THIS NOTE APPLIES TO ALL PAGES.
 - REFER TO SECTION 718.4.1 OF THE STANDARD SPECIFICATIONS, BEGINNING SAFETY ORDERS.
 - BEFORE TO THE INSURANCE OF THE SUBCONTRACTOR'S SEWERAGE CONSTRUCTION PERMIT, THE CONTRACTOR SHALL SUBMIT TO THE COUNTY ENGINEER COPIES OF A CONTRACTOR'S POLL EXAMINATION REPORT AND A PERMIT TO EXCAVATE IN COUNTY STREETS FROM THE L.A. COUNTY DEPT. A PERMIT TO EXCAVATE IN COUNTY STREETS FROM THE STATE OF CALIFORNIA, DIVISION OF INDUSTRIAL SAFETY & A CERTIFICATE OF WORKERS COMPENSATION INSURANCE WITH THE UNDERWRITER'S OF COUNTY ENGINEERED, 650 SOUTH YERBERT, LOS ANGELES, CALIFORNIA 90020, NAMED AS THE CERTIFICATE HOLDER TO BE FURNISHED 30 DAYS PRIOR TO CANCELLATION OF POLICY.

- CONSTRUCTION NOTES:**
- WORK SHALL BE CONSTRUCTED ACCORDING TO THE STANDARD SPECIFICATIONS FOR PUBLIC WORKS CONSTRUCTION (1978 EDITION) WITH 1980 SUPPLEMENT AND COUNTY ENGINEER SPECIAL PROVISIONS FOR THE CONSTRUCTION OF SANITARY SEWERS DATED 11/25/67, 11/25/68, AND SHALL BE INSPECTED ONLY IN THE PRESENCE OF THE COUNTY ENGINEER.
 - THE CONTRACTOR SHALL NOTIFY THE ENVIRONMENTAL DEVELOPMENT DIVISION (215) 215-2154 AT LEAST TWENTY-FOUR HOURS BEFORE STARTING ANY WORK UNDER THIS CONTRACT.
 - HOUSE LATERALS TO BE CONSTRUCTED WITH WHITES AT PROPERTY LINE 6 FEET BELOW CURB GRADE EXCEPT AS NOTED.
 - WYE OR TEE BRANCHES MAY BE USED FOR CONNECTIONS TO MAINLINE SEWERS EXCEPT AS NOTED.
 - ALL STRUCTURES SHALL BE EITHER BRICK MANHOLES PER 5-3 OR PRECAST CONCRETE MANHOLES PER 5-36, EXCEPT AS NOTED.
 - PROVIDE STAKES ON THE PROPERTY LINE OR PROPERTY LINES PRODUCED AT RIGHT ANGLES TO THE SEWER LINE AT THE CENTER LINE OF EACH MANHOLE.
 - MANHOLES SHALL BE UNIMPROVED HEIGHTS OF 4' TO 6' INCHES ABOVE FINISHED GRADE.
 - VENTERED CLAY PIPE SHALL BE TYPE "B", "C" OR "D" PER STANDARD SPECIFICATIONS SECTION 300-2.
 - IF A POWER POLE IS WITHIN THREE FEET OF THE SEWER, THE SEWER SHALL BE ENCASED, PER 5-23, CASE B, TWO FEET ON EACH SIDE FROM THE POINT OF INTERFERENCE.
 - IF DURING THE COURSE OF CONSTRUCTION IT IS DETERMINED THAT THERE IS LESS THAN FOUR FEET OF COVER OVER THE TOP OF A MAIN LINE OR HOUSE LATERAL V.C.P. SEWER WHICH IS NOT INDICATED ON THE PLANS, THE PIPE SHALL BE ENCASED PER 5-23, CASE B, UNLESS OTHERWISE APPROVED BY THE COUNTY ENGINEER.
 - ALL JOINTS BETWEEN CLAY PIPE AND VENTERED CLAY PIPE SHALL BE MADE WITH A RUBBER SLEEVE JOINT, TYPE "C" OR "D", WITH RUBBERING AS NECESSARY PER STANDARD SPECIFICATIONS, SECTION 300-2.
 - SEWERS TO BE TESTED FOR LEAKAGE PER SECTION 300-1.6 OF THE STANDARD SPECIFICATIONS AND SPECIAL PROVISIONS.
 - REINFORCE ALL TRENCHES WITHIN PAVED AREAS TO MEET L.A. COUNTY ROAD DEPT. OR CALIFORNIA STATE HIGHWAY REQUIREMENTS IN ACCORDANCE WITH PERMITS.
 - FULL COMPLIANCE WITH SECTION 306.1.6.3 OF THE SPECIAL PROVISIONS WILL BE REQUIRED FOR BACKFILL IN STREETS. CERTIFICATION OF BACKFILL COMPACTION AND SAME EQUIPMENTS BY A QUALIFIED, REGISTERED TESTING LABORATORY SHALL BE PROVIDED BY THE PERMITTEE PRIOR TO THE ISSUANCE OF A CERTIFICATE OF PARTIAL ACCEPTANCE.
- THE CONTRACTOR MUST NOTIFY THE SO CALIF GAS CO. OPERATIONS SERVICE BRANCH, TELEPHONE (213) 626-4282 EXT. 512 AT LEAST TWO WORKING DAYS PRIOR TO ANY WORK IN METROPOLITAN RIGHT-OF-WAY AS SHOWN ON PAGE FOUR.

THE FOLLOWING LATEST REVISED STANDARD PLANS ON FILE IN THE OFFICE OF THE COUNTY ENGINEER SHALL APPLY IN THE CONSTRUCTION OF THIS PROJECT:

MINIMUM PUBLIC SAFETY REQUIREMENTS	5-1
BRICK MANHOLE	5-2
STANDARD MANHOLE STEP	5-3
SEWING FOR SEWER PIPE	5-4
STAKING AND INCASEMENT	5-5
WYE OR TEE SUPPORT	5-6
ALLOWABLE TRENCH WIDTH	5-7
LOADING MANHOLES PLANS AND COVER	5-8
NON-REINFORCED PRECAST CONCRETE MANHOLE	5-9

COUNTY OF LOS ANGELES, CALIFORNIA
 STEPHEN J. KOONCE, COUNTY ENGINEER WALTER E. GARIBSON, CHIEF ENGINEER
 APPROVED: *Michael L. Kluge* 8-5-88 APPROVED: *Frank R. De* 8/11/88
 CHECKED: *Elph Davis* 8/11/88
 REG. C.E. NO. 16893
 SANTA CLARITA BLDG. DIST. 820

B.M. CL 604 ELEV. 1242.355
 ROB M TAG N CB 14" ST 1 FT
 W BCR 10 FT N C/L + 81 FT W
 C/L SAN FERNANDO RD
 NEYHALL QUAD. 1912

NOTICE TO CONTRACTOR
 THE CONTRACTOR MUST NOTIFY THE SO CALIF GAS CO. PHONE (805) 259-8330, PACIFIC TEL. CO. (213) 788-8745, SANTA CLARITA WATER CO. (805) 259-8131, AT LEAST TWENTY-FOUR HOURS BEFORE STARTING ANY WORK UNDER THIS CONTRACT.

SPECIAL BACKFILL IN EASEMENT CONSTRUCTION
 4. BACKFILL TRENCH AND REPLACE OTHER EARTH SO AS TO ACHIEVE THE NATURAL OR FINISHED GRADES AND SLOPES SHOWN ON THE GRADING PLAN APPROVED FOR THIS DEVELOPMENT BY THE BUILDING AND SAFETY DIVISION.
 5. ALL BACKFILL AND EARTH REPLACED SHALL BE COMPACTED TO A MAXIMUM DENSITY PER A S.T.M. STANDARD METHOD OF TEST D 698-57T AS MODIFIED ACCEPTABLE CERTIFICATION OF SUCH COMPACTION SHALL BE SUBMITTED TO THE ENVIRONMENTAL DEVELOPMENT DIVISION.

NO CONNECTION FOR THE DISPOSAL OF INDUSTRIAL WASTES SHALL BE MADE TO HOUSE SEWERS ON THESE TRACTS UNTIL A PERMIT FOR INDUSTRIAL WASTEWATER DISCHARGE HAS BEEN ISSUED BY THE SANITATION DISTRICTS FOR SAID CONTRACTOR.

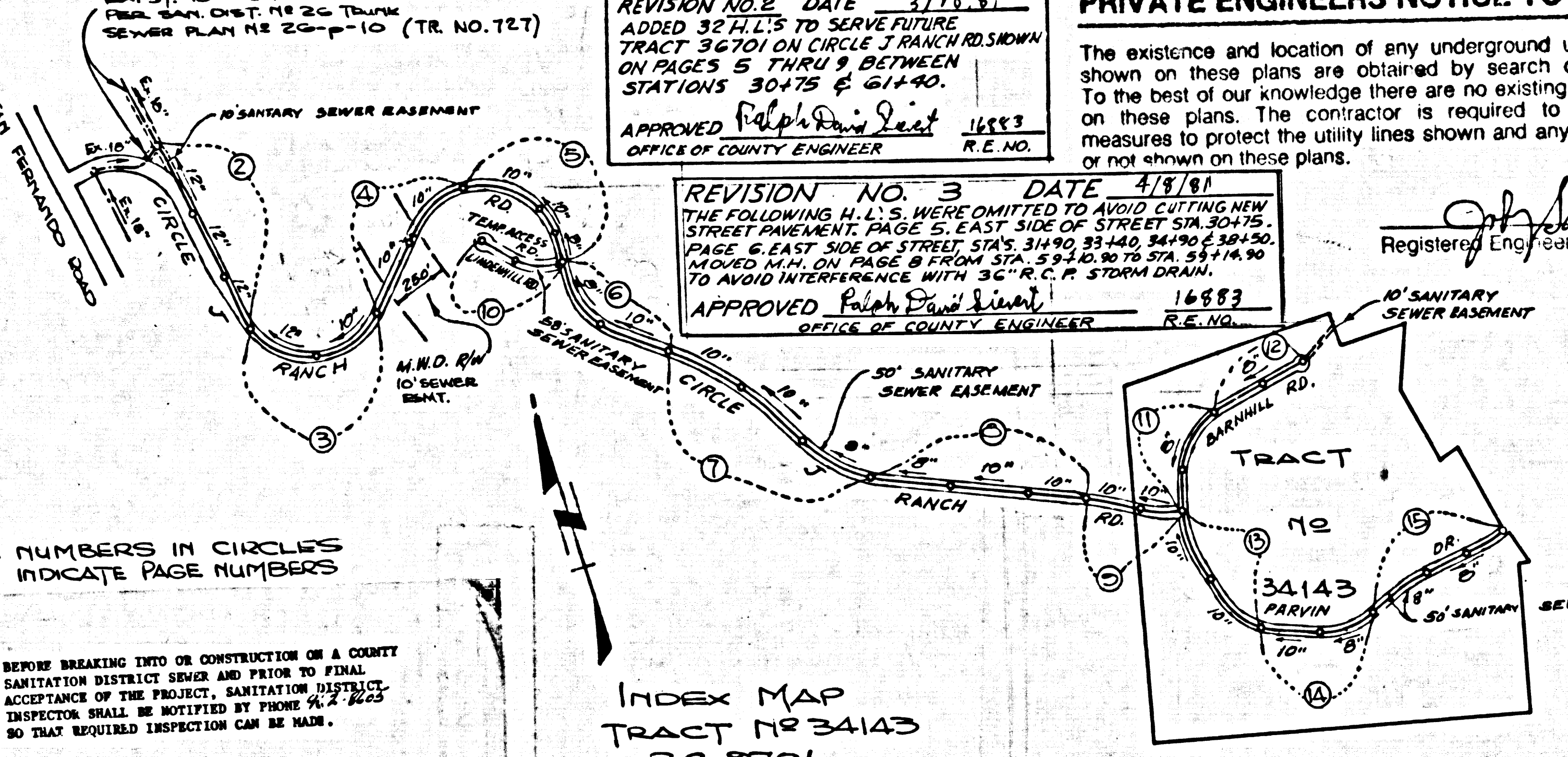
PRIVATE ENGINEERS NOTICE TO CONTRACTORS

The existence and location of any underground utility pipes or structures shown on these plans are obtained by search of the available records on these plans. The contractor is required to take due precautionary measures to protect the utility lines shown and any other lines not of record or not shown on these plans.

REVISION NO. 1 DATE 9/22/80
 PAGE 10, LINDENHILL RD., PVT. ST.
 1. EXTENDED THE 12" SANITARY SEWER EASEMENT TO THE FULL 8' WIDTH OF LINDENHILL RD.
 2. EXTENDED THE 4" HOUSE LATERALS TO THE NEW EASEMENT WIDTH.
 3. REMOVED THE NOTE STATING - ISSUE NO PERMITS UNTIL EASEMENTS ARE GRANTED TO LOTS 4, 5 & 6.
 APPROVED: *Valm D. West* 10/23/80
 OFFICE OF COUNTY ENGINEER, R.E. NO.

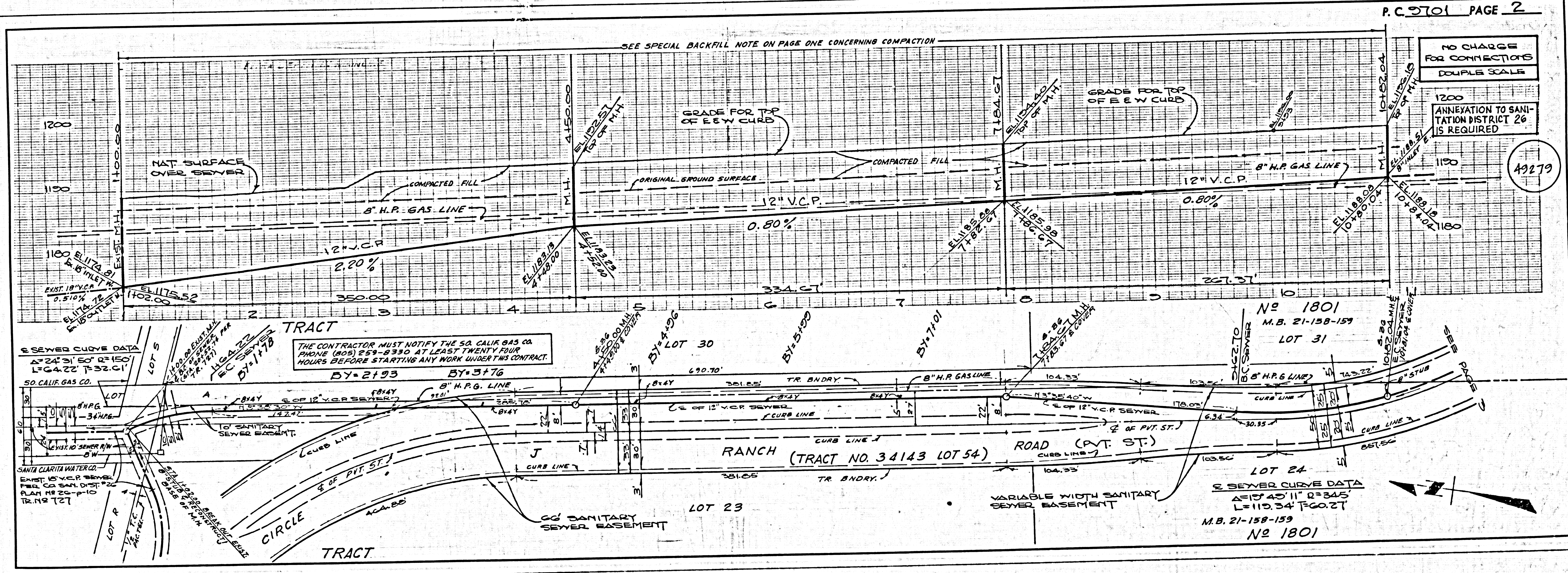
REVISION NO. 2 DATE 3/18/81
 ADDED 30' L.L.S. TO SERVE FUTURE TRACT 34701 ON CIRCLE J BRANCH RD. SHOWN ON PAGES 5, 7 & 9 BETWEEN STATIONS 30+75 & 31+40.
 APPROVED: *Elph Davis* 1/18/81
 OFFICE OF COUNTY ENGINEER, R.E. NO.

REVISION NO. 3 DATE 4/1/81
 THE FOLLOWING U.L.S. WERE OMITTED TO AVOID CUTTING NEW STREET EASEMENT: PAGE 5, EAST SIDE OF STREET STA. 30+75. PAGE 6, EAST SIDE OF STREET STA. 31+40 TO STA. 31+70. TO AVOID INTERFERENCE WITH 30" R.C.P. STORM DRAIN.
 APPROVED: *Elph Davis* 1/8/81
 OFFICE OF COUNTY ENGINEER, R.E. NO.



NOTE: NUMBERS IN CIRCLES INDICATE PAGE NUMBERS

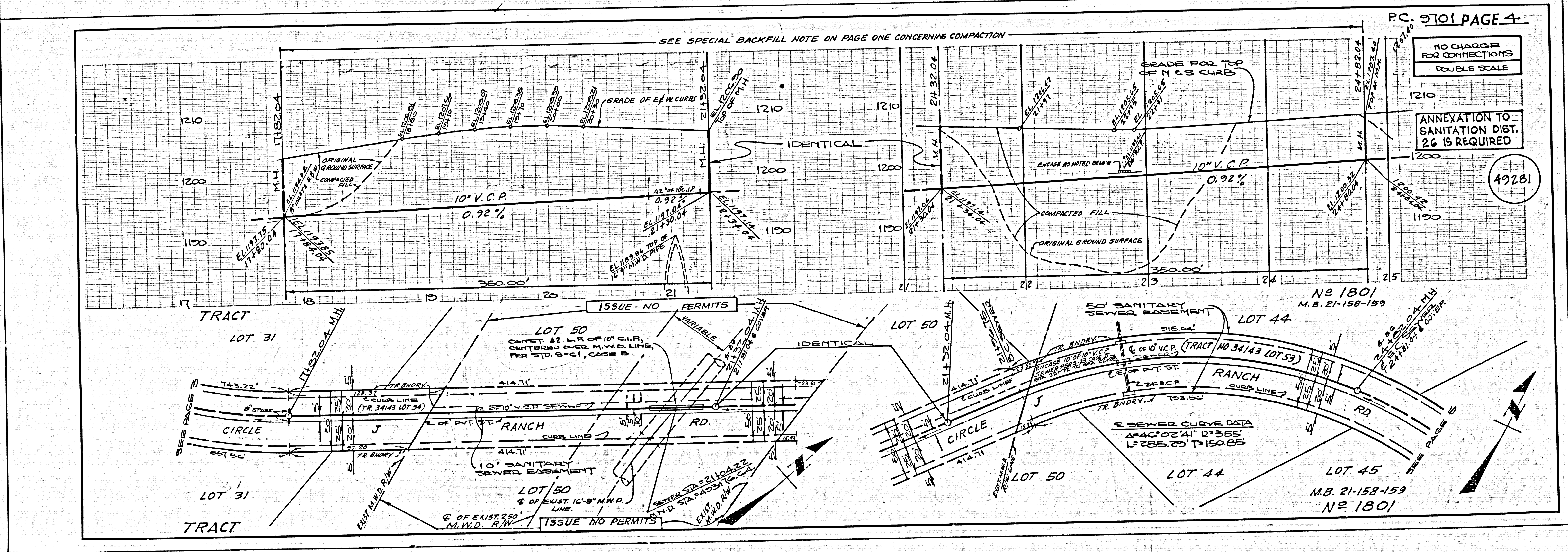
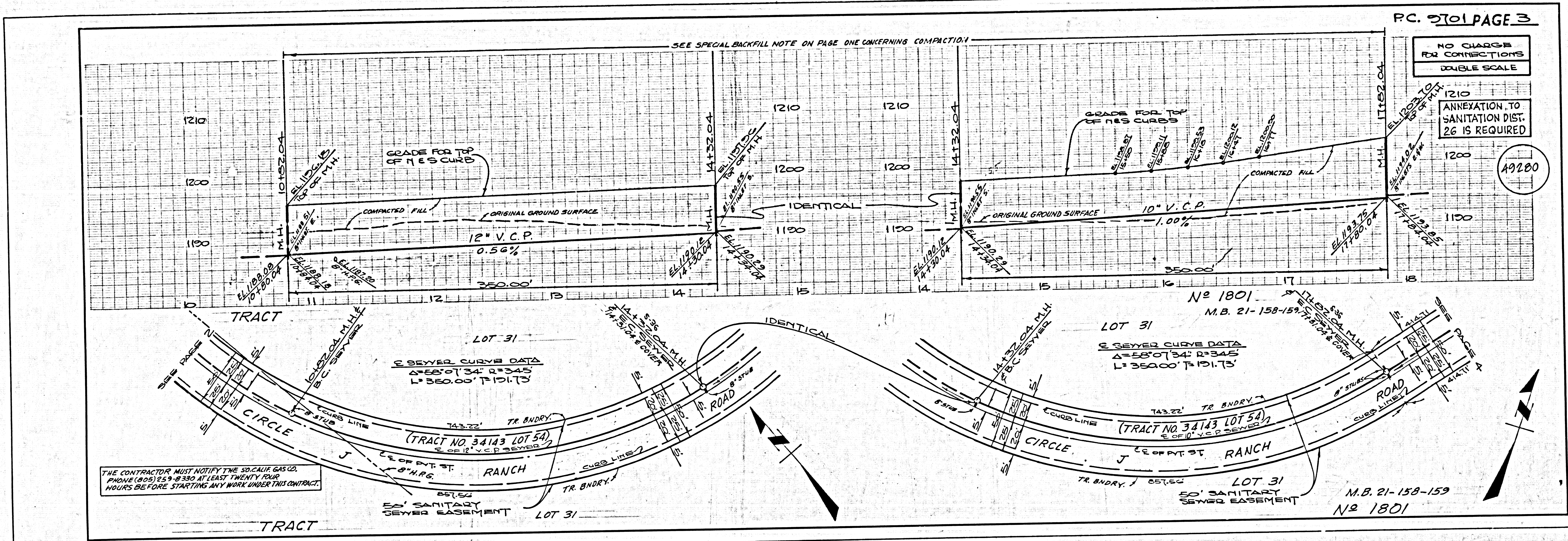
BEFORE BREAKING INTO OR CONSTRUCTION ON A COUNTY SANITATION DISTRICT SEWER AND PRIOR TO FINAL ACCEPTANCE OF THE PROJECT, SANITATION DISTRICT INSPECTION SHALL BE NOTIFIED BY PHONE # 2-8225 SO THAT REQUIRED INSPECTION CAN BE MADE.

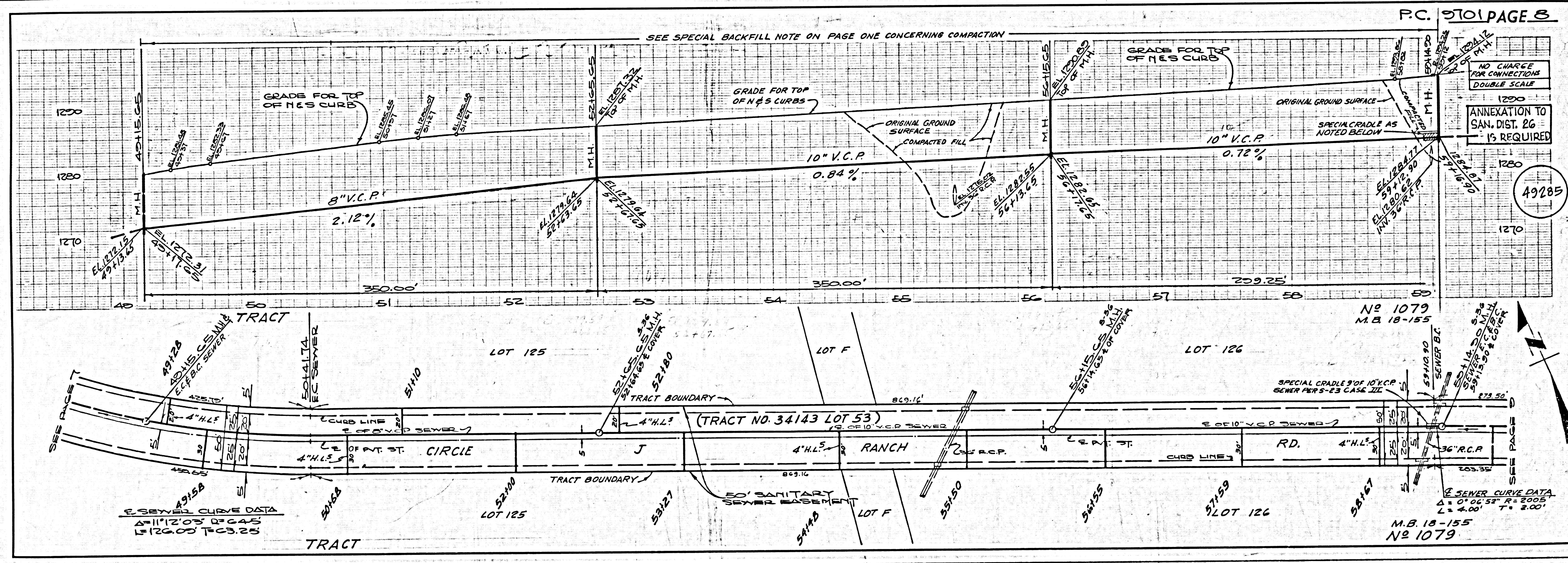
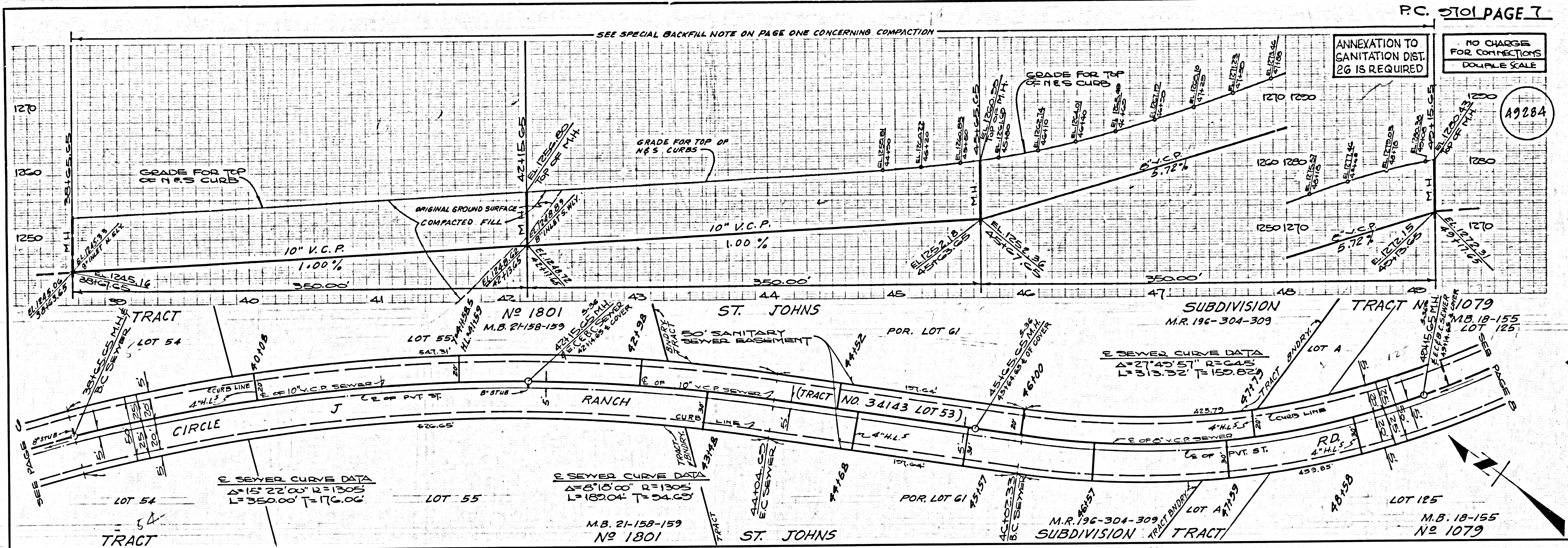


NO CHARGE FOR CONNECTIONS
 DOUBLE SCALE
 1200
 ANNEXATION TO SANITATION DISTRICT 26 IS REQUIRED
 49279

SEWER CURVE DATA
 ΔT=24°31' E ΔS=150'
 L=64.22' R=32.01'
 SO CALIF. GAS CO.
 THE CONTRACTOR MUST NOTIFY THE SO CALIF GAS CO. PHONE (805) 259-8330 AT LEAST TWENTY-FOUR HOURS BEFORE STARTING ANY WORK UNDER THIS CONTRACT.
 BY 2193 BY 3176

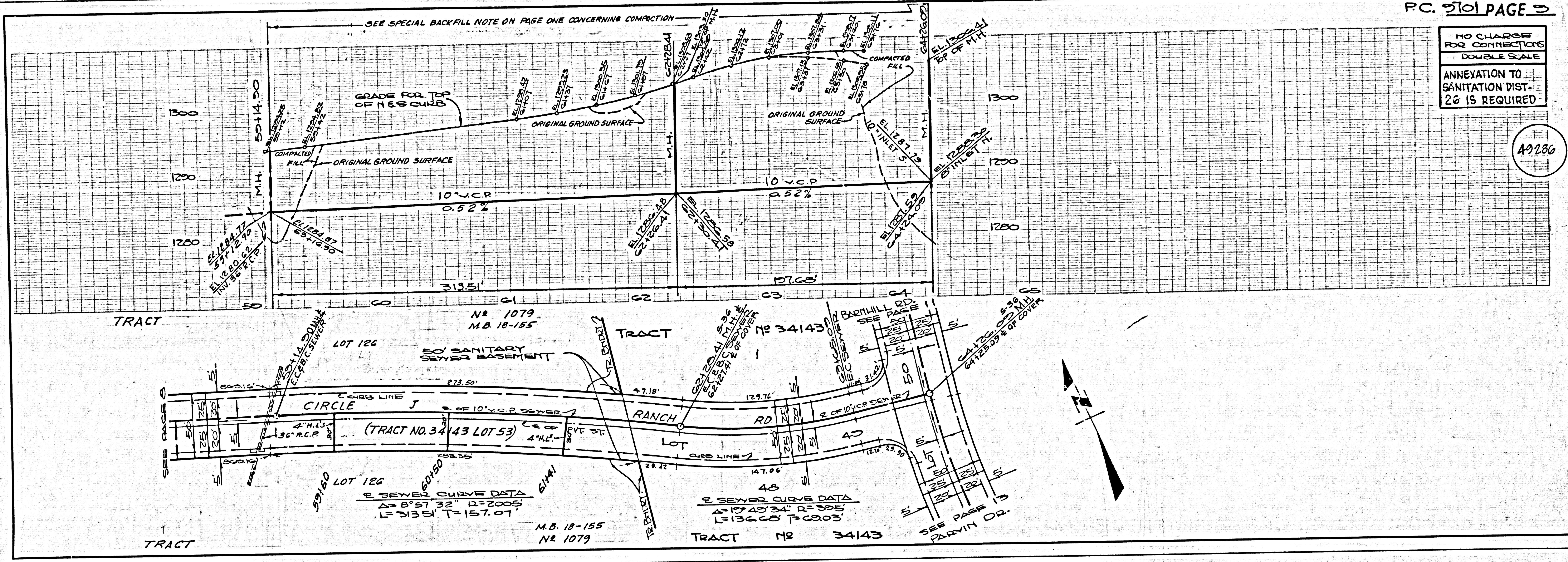
SEWER CURVE DATA
 ΔT=17°43'11" E ΔS=245'
 L=113.34' R=60.27'
 M.B. 21-158-159
 No 1801





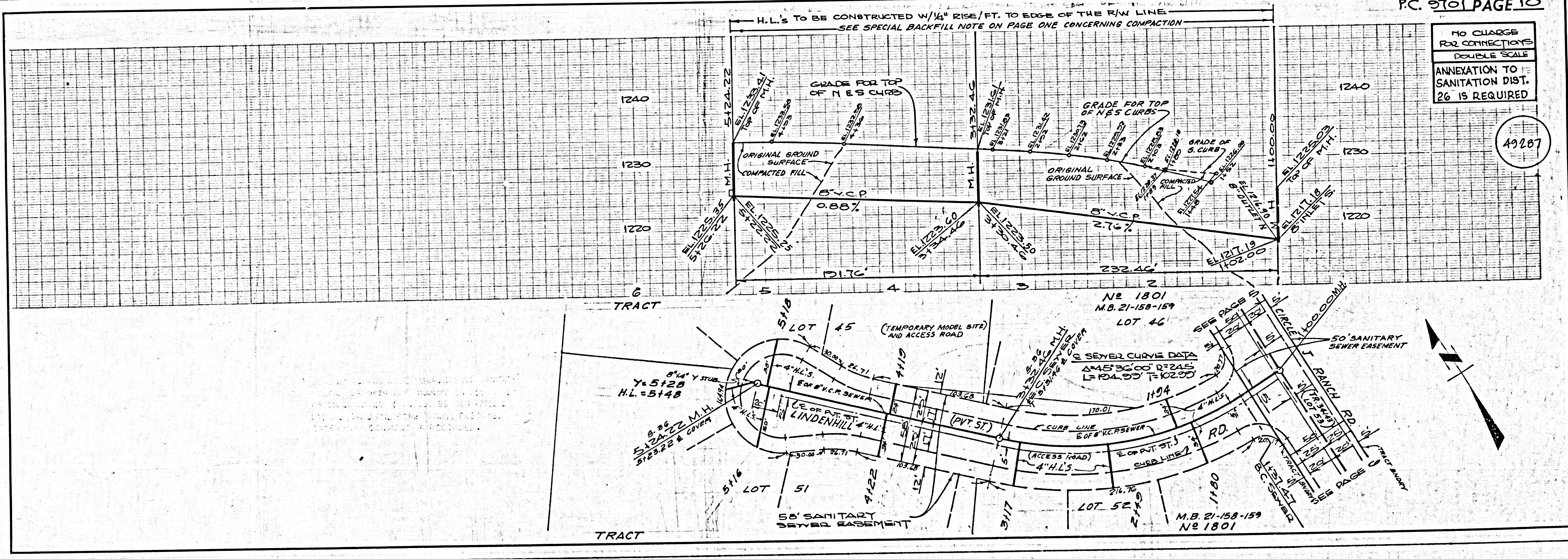
NO CHARGE FOR CONNECTIONS
DOUBLE SCALE
ANNEXATION TO SANITATION DIST. 26 IS REQUIRED

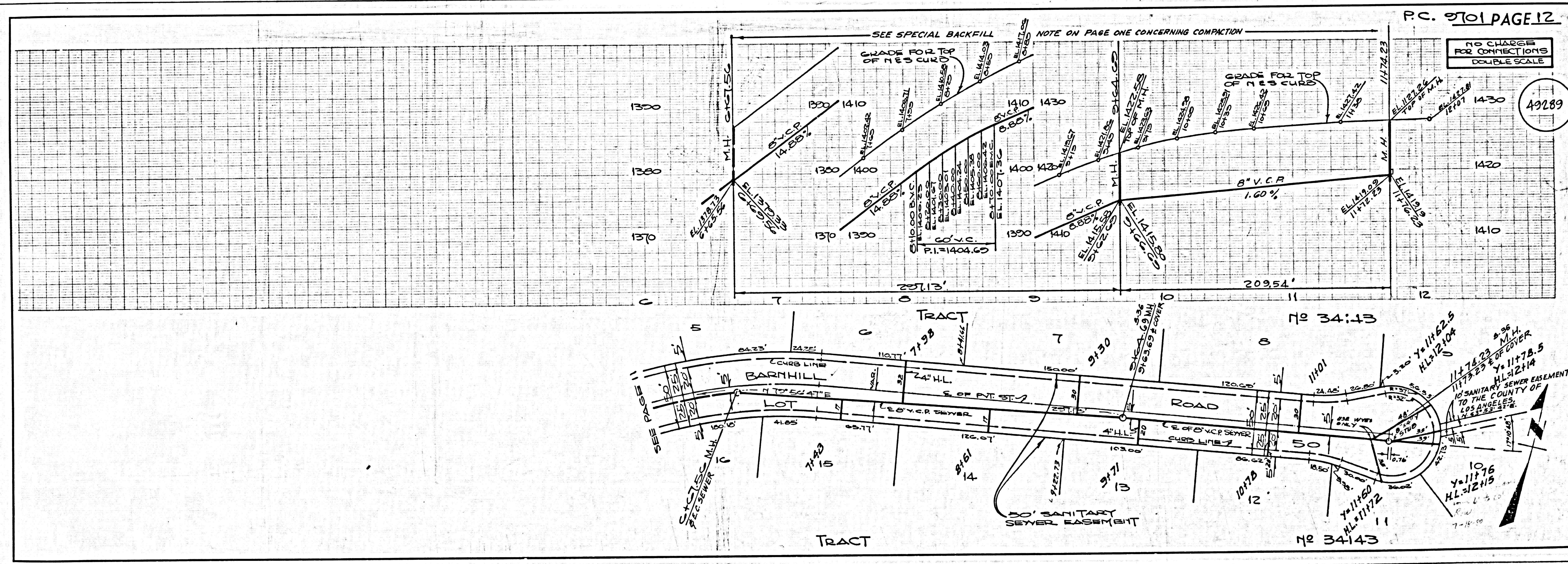
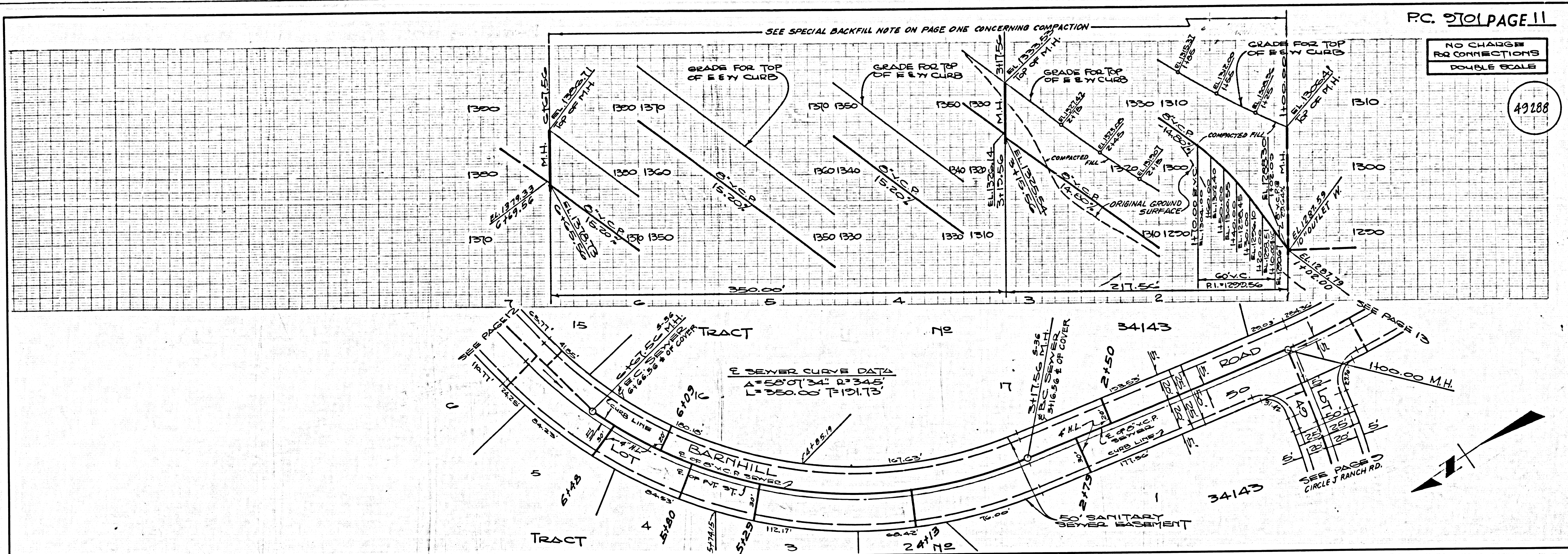
49286



NO CHARGE FOR CONNECTIONS
DOUBLE SCALE
ANNEXATION TO SANITATION DIST. 26 IS REQUIRED

49287

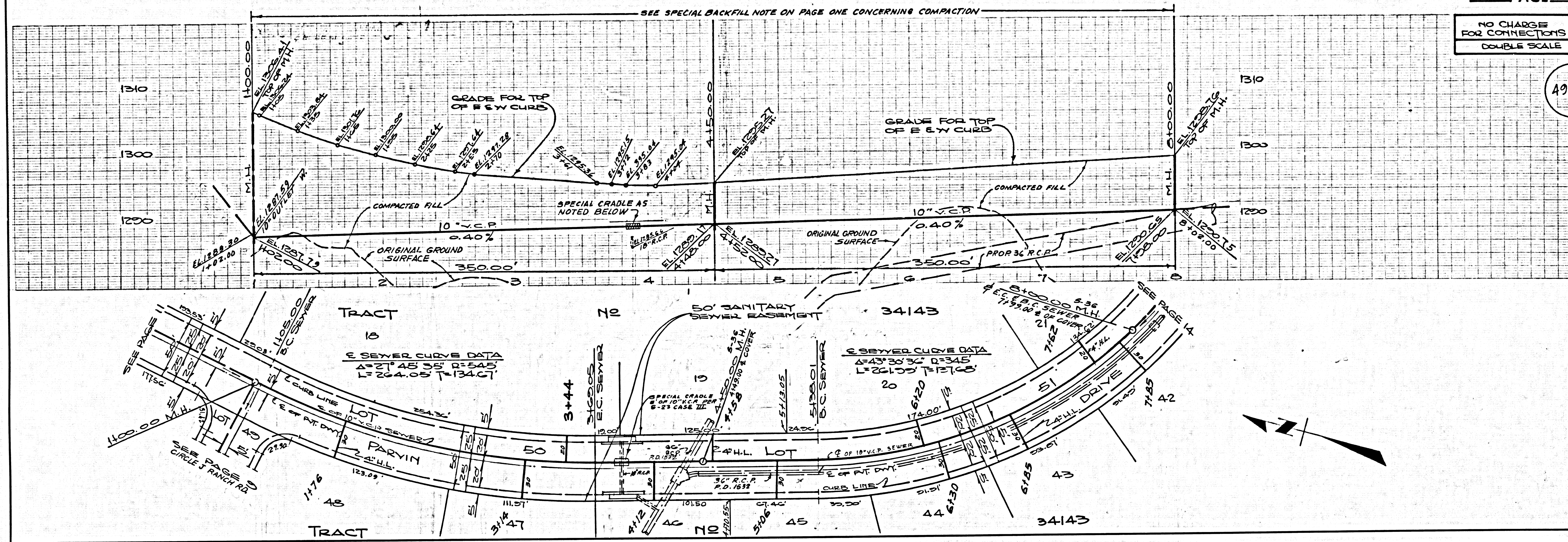




PC: 9701

NO CHARGE FOR CONNECTIONS
DOUBLE SCALE

49290



NO CHARGE FOR CONNECTIONS
DOUBLE SCALE

49291

