

**TRACT NO. 31224**  
**PRIVATE CONTRACT NO. 9706**

W.S. 17  
 12 SHEETS, 12 PAGES (48047)  
 SCALE: VERT. 1"=4'  
 HORIZ. 1"=40'  
 MAY, 1979  
 PREPARED IN THE OFFICES OF  
**PFEILER AND ASSOCIATES ENGINEERS**  
 1559 W. COMMONWEALTH AVENUE  
 FULLERTON, CALIF. 92633 (714) 876-5850  
 BY: *Ralph David Sweet*  
 REG. C. E. No. 12307

- GENERAL NOTES:**
- ELEVATIONS ARE IN FEET ABOVE U.S.C. & G.S. SEA LEVEL DATUM OF 1929.
  - NO REVISIONS SHALL BE MADE IN THESE PLANS WITHOUT THE APPROVAL OF THE COUNTY ENGINEER.
  - NO REPRESENTATIVE OF THE COUNTY ENGINEER WILL SURVEY OR LAY OUT ANY PORTION OF THE WORK.
  - GRADES TO WHICH THIS IMPROVEMENT IS TO BE CONSTRUCTED ARE SHOWN ON PLANS AND PROFILES. GRADE POINTS FOR TOP OF CURBS, CENTER LINE OF STREETS, OR CENTER LINE OF ALLEYS ARE SHOWN BY CIRCLES ON PROFILES. AT ALL POINTS BETWEEN DESIGNATED POINTS THE GRADE SHALL BE ESTABLISHED SO AS TO CONFORM TO A STRAIGHT LINE DRAWN BETWEEN SAID DESIGNATED POINTS.
  - THE PRIVATE ENGINEER SHALL FURNISH THE COUNTY ENGINEER WITH GRADE SHEETS AND STATIONING FOR ALL HOUSE LATERALS AND "T" OR "Y" BRANCHES AND SHALL PROVIDE STAKES FOR THEM AT THEIR PROPER LOCATIONS WITH STATIONING PLAINLY MARKED. ALL HOUSE LATERALS SHALL BE CONSTRUCTED IN A STRAIGHT ALIGNMENT AT RIGHT ANGLES FROM THE MAIN LINE SEWER EXCEPT AS SHOWN ON THE PLANS. HOUSE LATERALS FROM CHIMNEYS SHALL NOT HAVE AN ANGLE OF LESS THAN 45° WITH THE MAIN LINE SEWER. ANY CHANGE IN ALIGNMENT SHALL BE REQUESTED IN WRITING BY THE PRIVATE ENGINEER.
  - THE PRIVATE ENGINEER SHALL FURNISH THE HOUSE LATERAL SUPPLY AT THE PROPERTY LINE BELOW THE TOP OF CURB ELEVATION FOR EACH HOUSE LATERAL ON THE GRADE SHEET.
  - BEFORE WORK CAN BE STARTED, THE CONTRACTOR MUST OBTAIN A PERMIT TO EXCAVATE IN COUNTY STREETS FROM THE L.A. COUNTY SOILS DEPT., DISTRICT OFFICE NO. 5 AND PAY A FEE TO THE COUNTY ENGINEER, 550 S. VERMONT AVENUE, LOS ANGELES, TO COVER THE COST OF CONSTRUCTION INSPECTION AND RECORD PLANS.
  - IF WORK IS TO BE DONE IN A STATE HIGHWAY, A PERMIT MUST BE OBTAINED FROM THE STATE OF CALIFORNIA, DIVISION OF HIGHWAYS, 130 SOUTH SHAW STREET, LOS ANGELES, CALIFORNIA.
  - APPROVAL OF THIS PLAN BY THE COUNTY OF LOS ANGELES DOES NOT CONSTITUTE A REPRESENTATION AS TO THE ACCURACY OF THE LOCATION OR OF THE EXISTENCE OR NON-EXISTENCE OF ANY UNDERGROUND UTILITY PIPE, OR STRUCTURE WITHIN THE LIMITS OF THIS PROJECT. THIS NOTE APPLIES TO ALL PAGES.
  - REFER TO SECTION 7.16.41 OF THE STANDARD SPECIFICATIONS, REGARDING SAFETY ORDERS.
  - PRIOR TO ISSUANCE OF THE REQUIRED SEWER CONSTRUCTION PERMIT BY THE COUNTY ENGINEER, THE CONTRACTOR SHALL OBTAIN A PERMIT TO EXCAVATE FROM THE STATE OF CALIFORNIA, DEPARTMENT OF INDUSTRIAL RELATIONS, DIVISION OF INDUSTRIAL SAFETY, AND SHALL FILE A COPY OF HIS WORKERS COMPENSATION INSURANCE WITH THE COUNTY ENGINEER.

- CONSTRUCTION NOTES:**
- WORK SHALL BE CONSTRUCTED ACCORDING TO THE STANDARD SPECIFICATIONS FOR PUBLIC WORKS CONSTRUCTION (1978 EDITION) WITH THE SUPPLEMENT AND COUNTY ENGINEER SPECIAL PROVISIONS FOR THE CONSTRUCTION OF SANITARY SEWERS DATED 10/27/78 AND SHALL BE INDICATED ONLY IN THE PRESENCE OF THE COUNTY ENGINEER.
  - THE CONTRACTOR SHALL NOTIFY THE ENVIRONMENTAL DEVELOPMENT DIVISION, PHONE 818-730-2178 AT LEAST TWENTY-FOUR HOURS BEFORE STARTING ANY WORK UNDER THIS CONTRACT.
  - HOUSE LATERALS TO BE CONSTRUCTED WITH INVERTS AT PROPERTY LINE & FEET BELOW CURB GRADE EXCEPT AS NOTED.
  - WITH OR WITHOUT BRANCHES MAY BE USED FOR CONNECTIONS TO BLINDING SEWERS EXCEPT AS NOTED.
  - ALL STRUCTURES SHALL BE EITHER BRICK MANHOLES PER 5.0 OR PRECAST CONCRETE MANHOLES PER 5.26, EXCEPT AS NOTED.
  - PROTECT STAKES ON THE PROPERTY LINE OR PROPERTY LINES PRODUCED AT RIGHT ANGLES TO THE SEWER LINE AT THE CENTER LINE OF EACH MANHOLE.
  - MANHOLE TOPS ON UNIMPROVED RIGHTS OF WAY TO BE SIX INCHES ABOVE FINISHED GRADE.
  - VITRIFIED CLAY PIPE JOINTS SHALL BE TYPE "B", "F", OR "G" PER STANDARD SPECIFICATIONS SECTION 306-2.
  - IF A POWER POLE IS WITHIN THREE FEET OF THE SEWER, THE SEWER SHALL BE ENCASED, PER 5.23, CASE II, TWO FEET ON EACH SIDE FROM THE POINT OF INTERFERENCE.
  - IF DURING THE COURSE OF CONSTRUCTION IT IS DETERMINED THAT THERE IS LESS THAN FOUR FEET OF COVER OVER THE TOP OF A MAIN LINE OF HOUSE LATERAL V.C.P. SEWERS:
  - ALL JOINTS BETWEEN CAST IRON PIPE AND VITRIFIED CLAY PIPE SHALL BE MADE WITH A RUBBER SLEEVE JOINT, TYPE "C" OR "F", WITH BUSHING IF NECESSARY PER STANDARD SPECIFICATIONS, SECTION 306-2.
  - SEWERS TO BE TESTED FOR LEAKAGE PER SECTION 306-1.9 OF THE STANDARD SPECIFICATIONS AND SPECIAL PROVISIONS.
  - REPLACE ALL TRENCHES WITHIN PAVED AREAS TO MEET L.A. COUNTY SOILS DEPT. OR CALIFORNIA STATE HIGHWAY REQUIREMENTS IN ACCORDANCE WITH PERMITS.
  - FULL COMPLIANCE WITH SECTION 306-1.8 OF THE SPECIAL PROVISIONS WILL BE REQUIRED FOR BACKFILL IN STREETS. CERTIFICATION OF BACKFILL COMPACTION AND SAND EQUIVALENTS BY A QUALIFIED REGISTERED TESTING LABORATORY SHALL BE PROVIDED BY THE PERMITTEE PRIOR TO THE ISSUANCE OF A CERTIFICATE OF PARTIAL ACCEPTANCE.
  - THE ENGINEER-DESIGNED UTILITY COMPANIES WITHIN THE LIMITS OF THIS PROJECT ARE AS FOLLOWS:
    - INTELLIGENT COUNTY WATER DISTRICT
    - SOUTHERN CALIFORNIA GAS CO.
    - PACIFIC TELEPHONE CO.
    - VALLEY COUNTY CABLE TV
    - MOBILE OIL CORPORATION
    - PACIFIC LIGHTING CO.

THE FOLLOWING LATEST REVISED STANDARD PLANS ON FILE IN THE OFFICE OF THE COUNTY ENGINEER SHALL APPLY IN THE CONSTRUCTION OF THIS PROJECT.

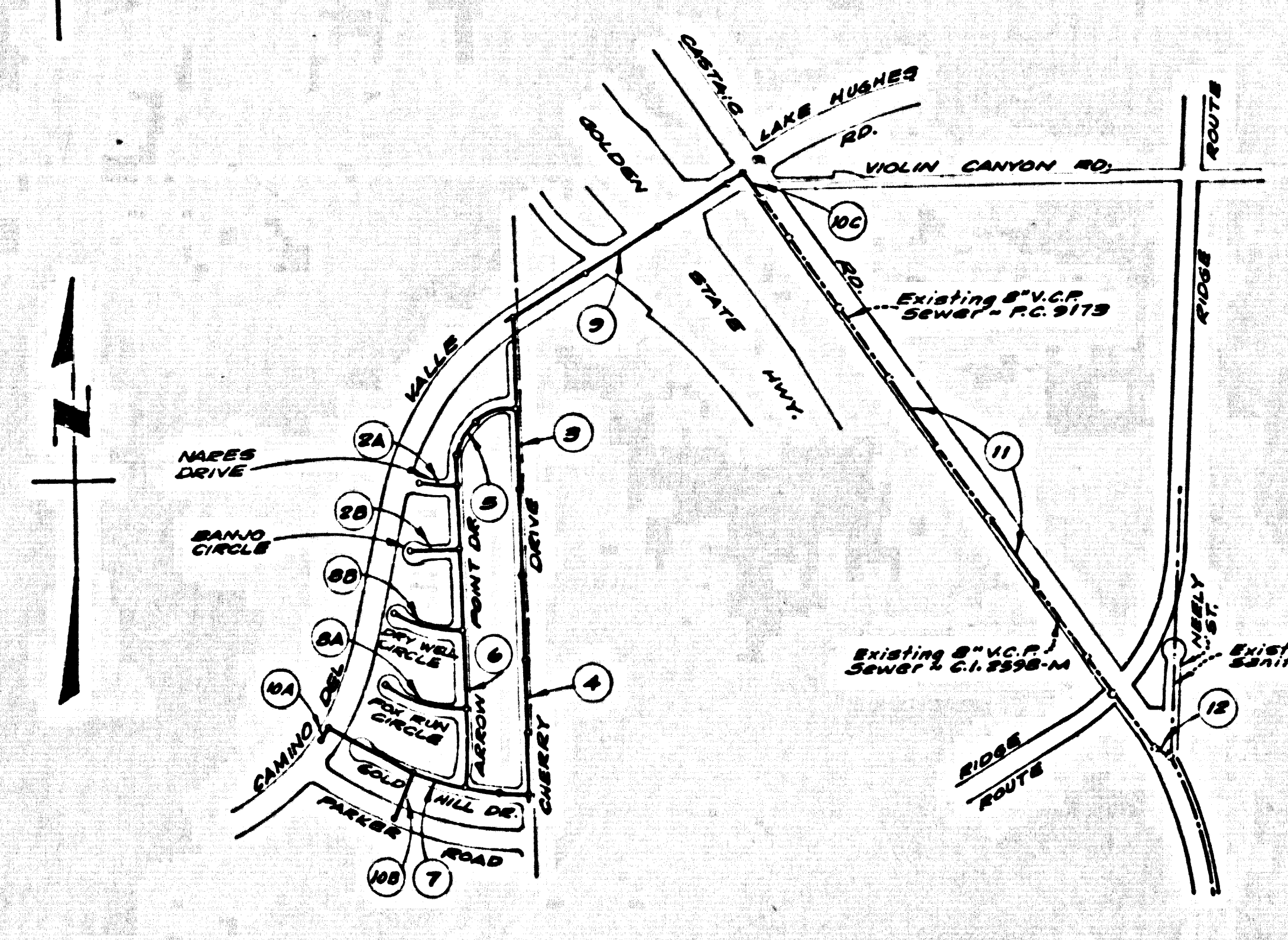
MINIMUM PUBLIC SAFETY REQUIREMENTS	5.0
BRICK MANHOLE	5.0
STANDARD MANHOLE STOP	5.17
WARNING FOR SEWER PIPE	5.20
CHASING AND ENCASING	5.20
WYE OR TEE SUPPORT	5.20
ALLOWABLE TRENCH WIDTHS	5.20
LOCKING MANHOLE FRAME AND COVER	5.20
NON-ANCHORED PRECAST CONCRETE MANHOLE	5.20
SPECIAL HOUSE LATERALS	5.25

COUNTY OF LOS ANGELES, CALIFORNIA  
 STEPHEN J. KOONCE COUNTY ENGINEER  
 WALTER E. GARISON CHIEF ENGINEER  
 APPROVED *Ralph David Sweet* 10/26/79  
 CHECKED *Ralph David Sweet* 10/26/79  
 REG. C.E. NO. 16783  
 SANTA CLARITA VALLEY - RIDG DIST. 6-B

B.M. BL 3988 ELEV. 1184.526'  
 USC&GS MON. @ NW COR. BRIDGE  
 NO. 81778 17 FT. N. C/L PARKER  
 RD. 5 20 FT. E. GOLDEN STATE  
 FRWY ON-RAMP MKD. F1219 1971  
 NEWHALL QUAD. 1972

**REVISIONS (CONT.)**

REV.	DESCRIPTION	DATE
2	Added 48" V.C.P. Storm Drain to Pages 4 & 5. SPECIAL N.L.C. FOR LOTS 1 to 3 Pg. 7, LOTS 24 & 25 Pg. 8 & LOTS 22 & 23 Pg. 6.	11/1/80
	<i>Ralph David Sweet</i>	
	Approved By	

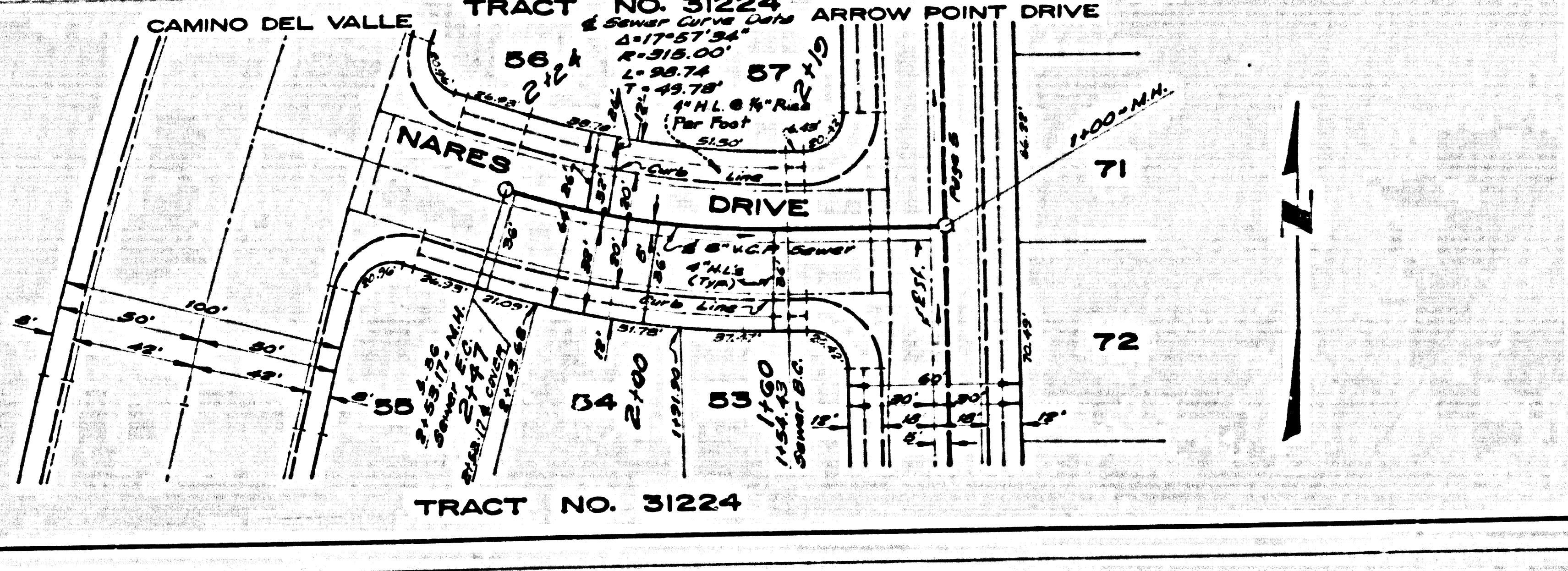
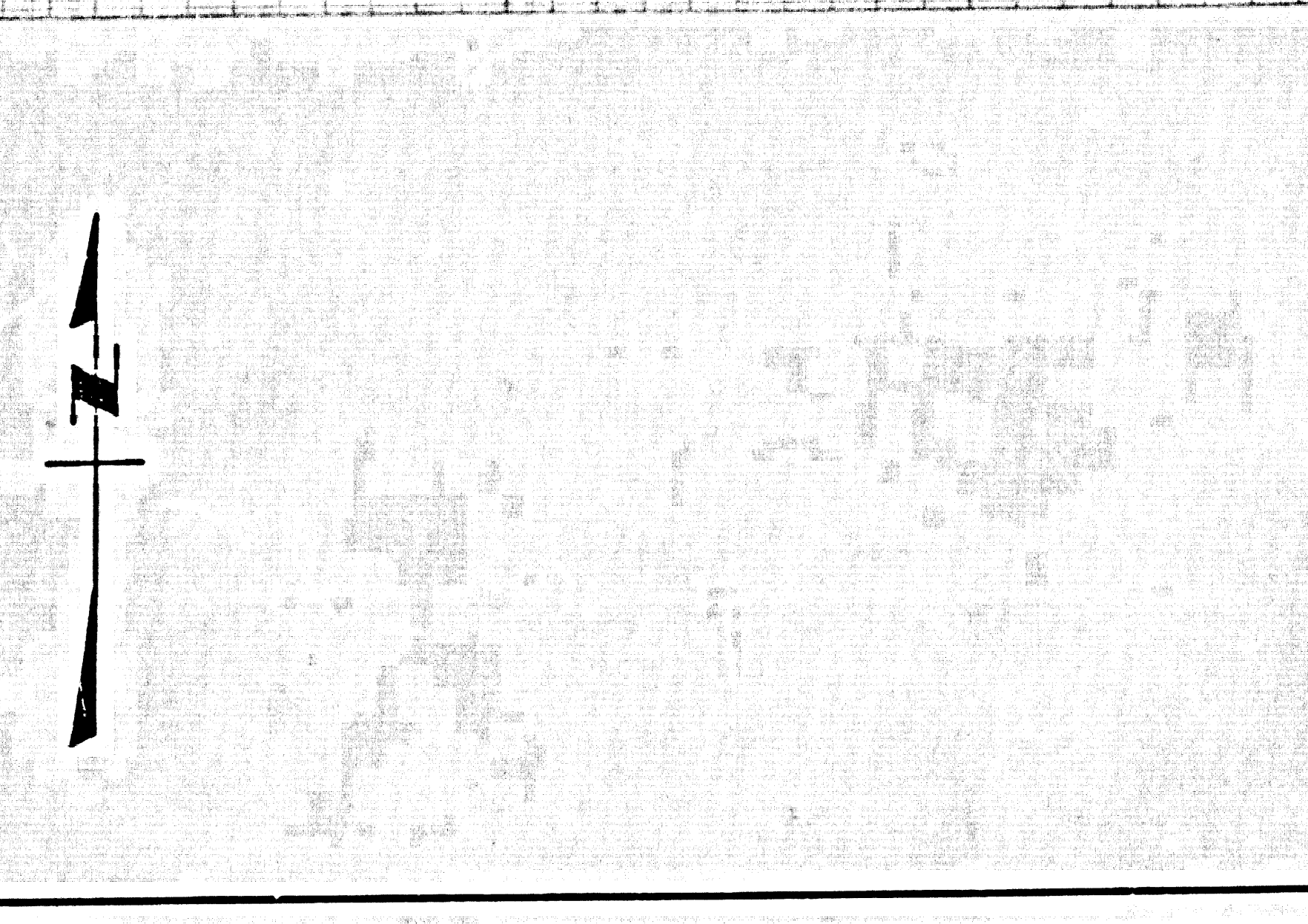
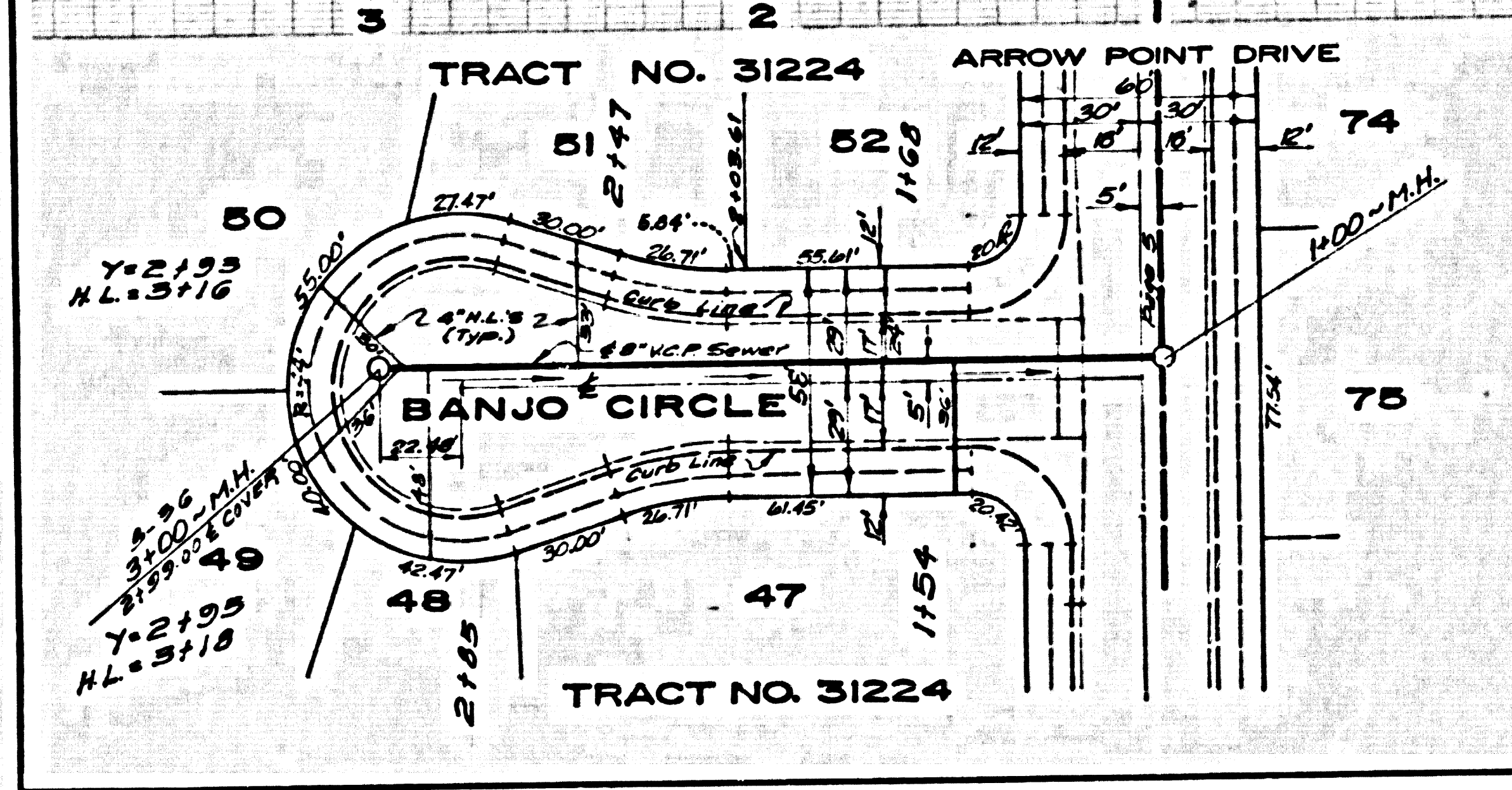
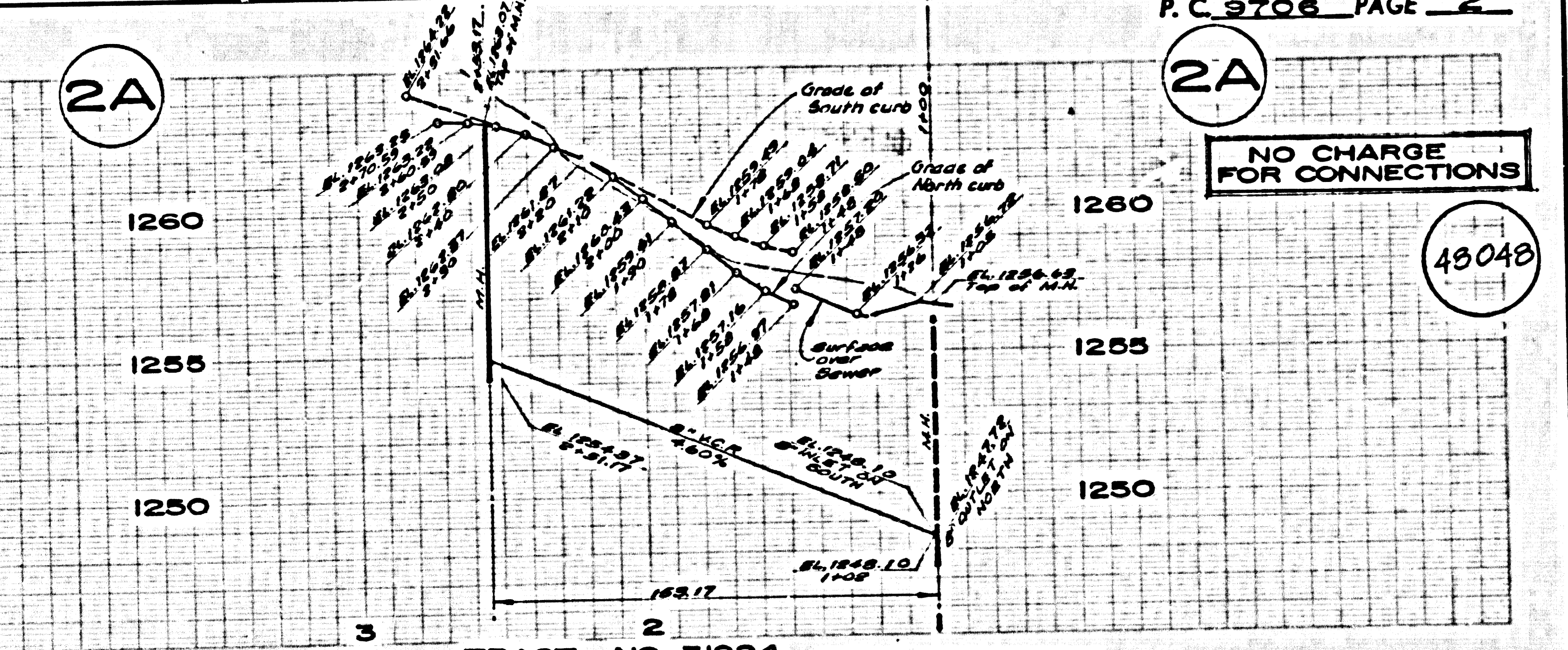
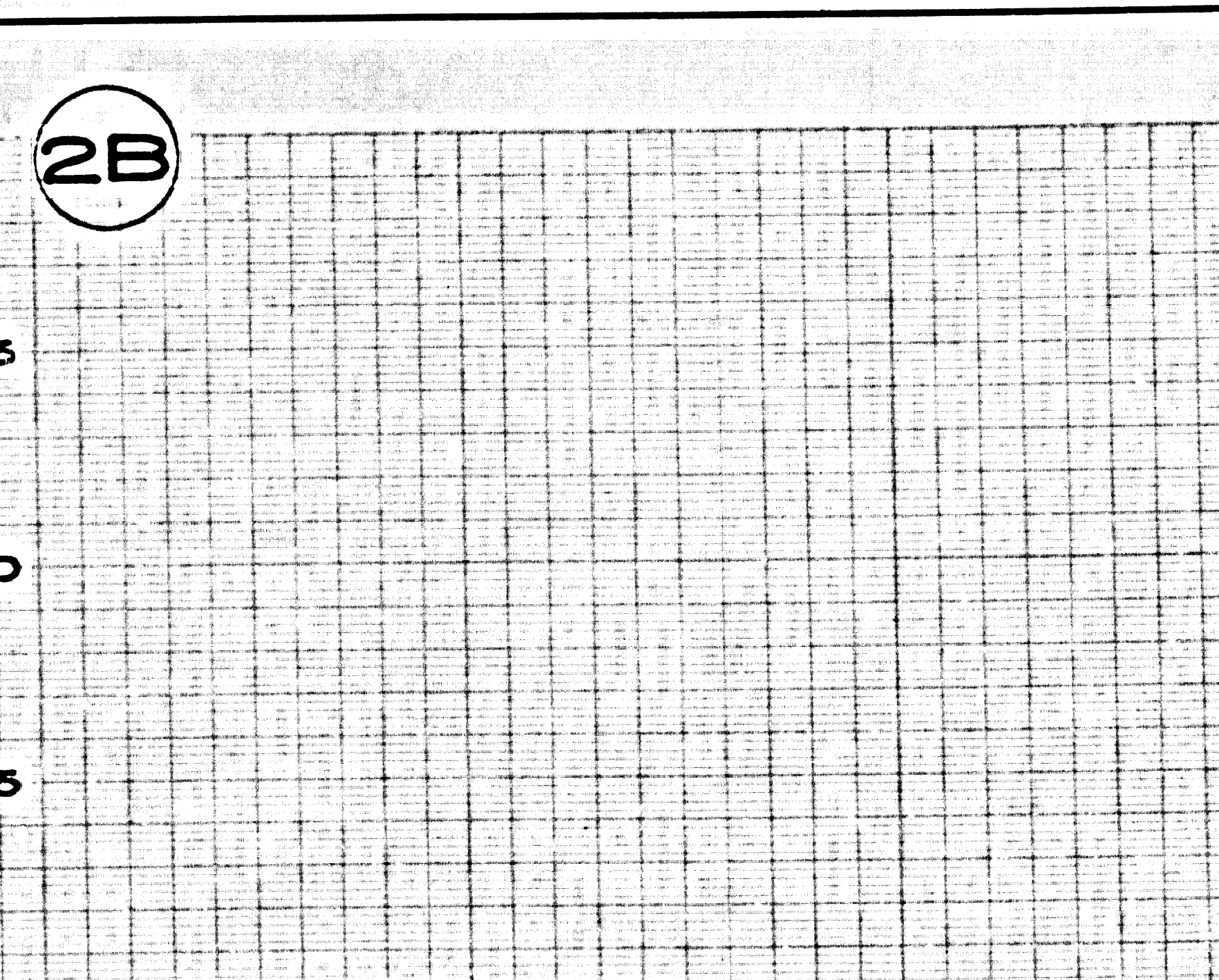
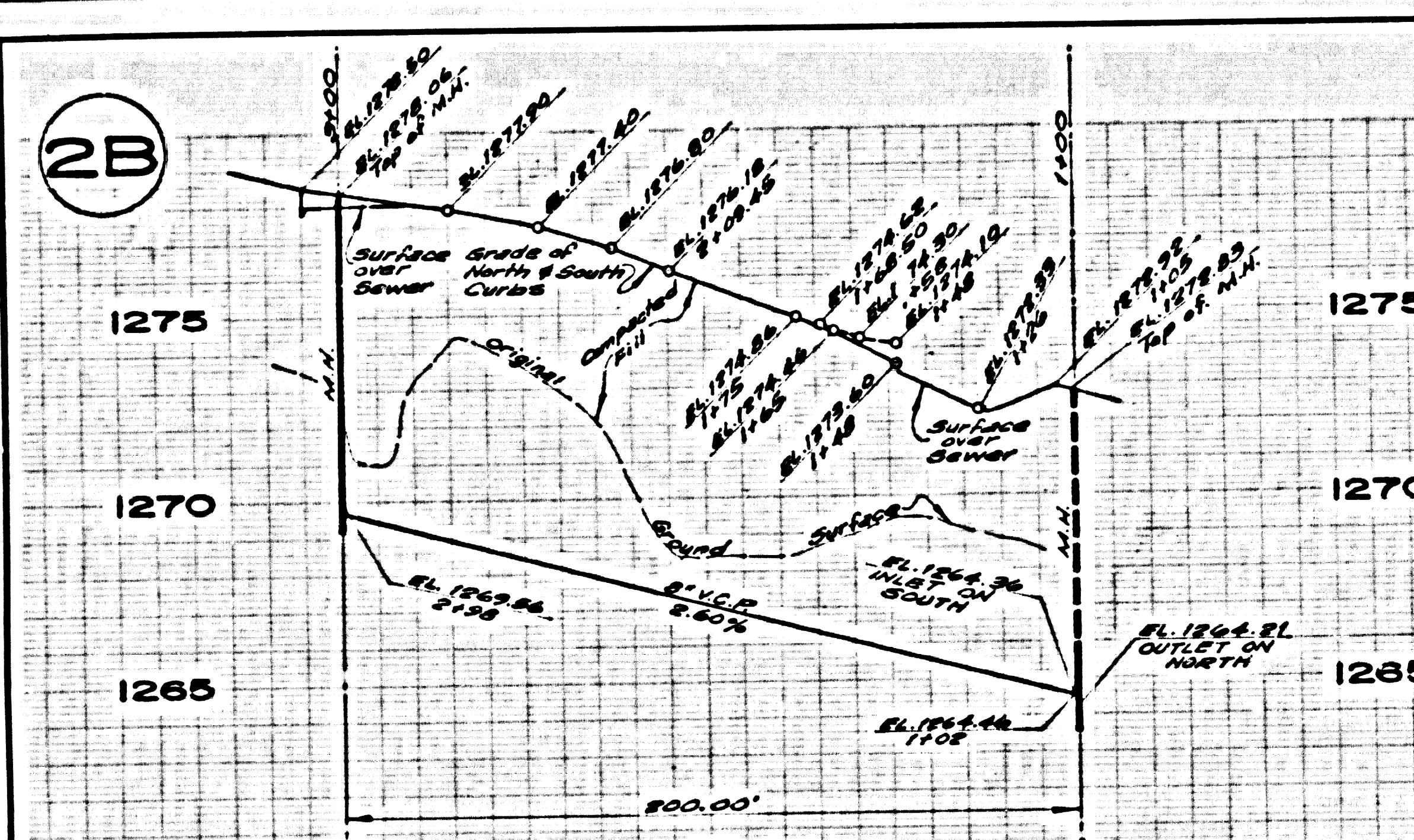


RC. 9706  
**INDEX MAP**  
 Scale = 1"=600'  
**TRACT NO. 31224**

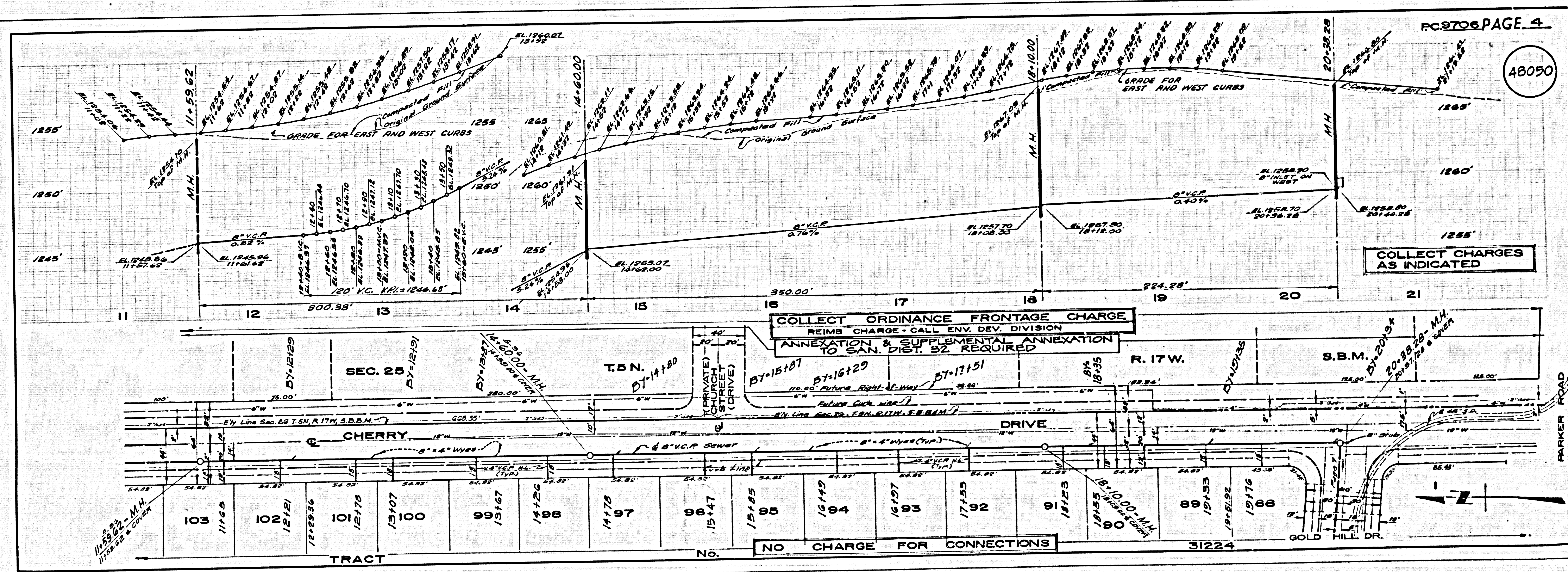
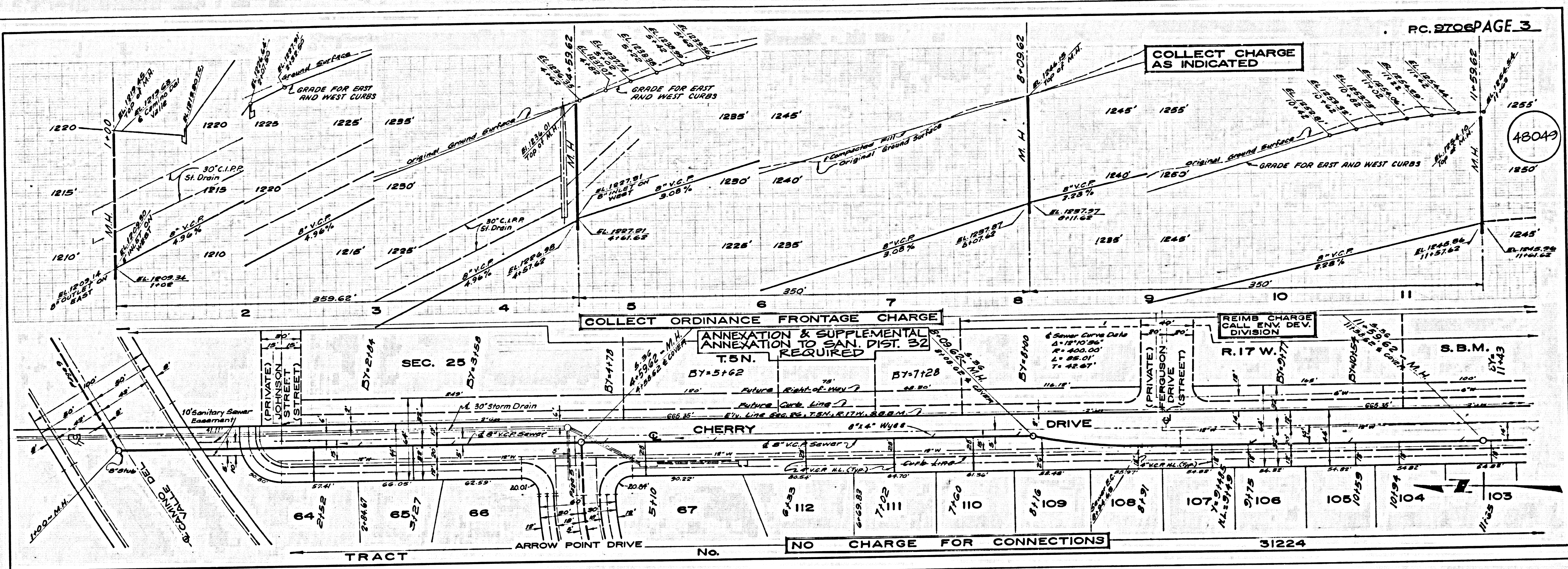
**REVISIONS**

REV.	DESCRIPTION	DATE
1	Extended Sewer along Hill Dr into Camino Del Valle. Added Pages 10A & 10B to Page 10 and to Index.	11/7/77
	<i>Ralph David Sweet</i>	
	Approved By	

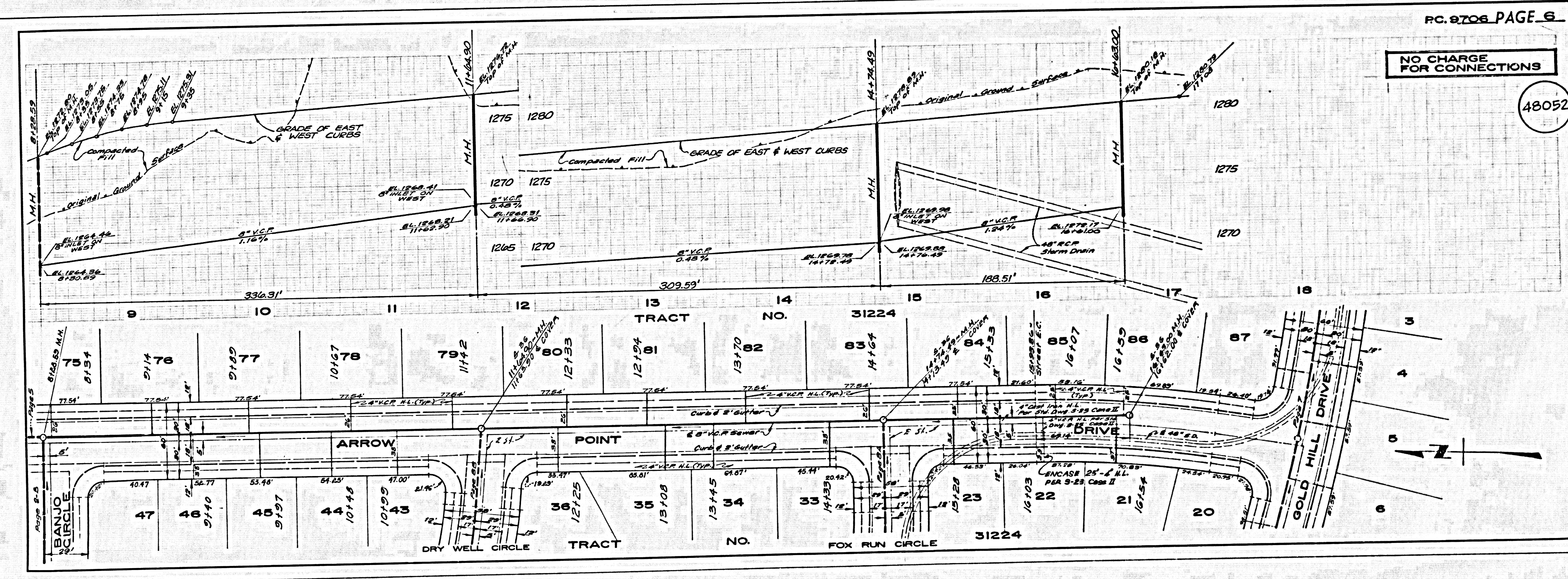
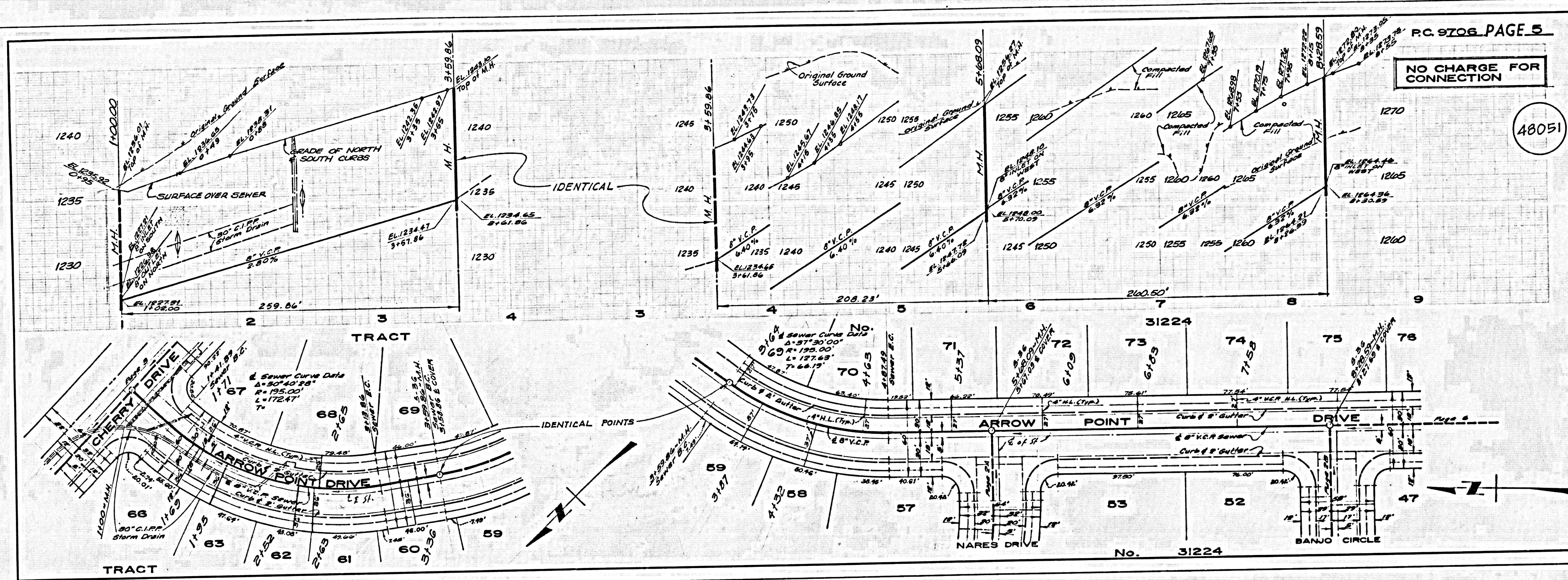
**CONSTRUCTION NOTES (CONT.)**  
 16. The contractor is to maintain sewer service at all times and reconnect all N.L.C.s shown on Pages 11 and 12.  
 BEFORE BREAKING INTO THE CONSTRUCTION ON A DIVISION OF THE COUNTY SEWER AND PRELIMINARY LOCATIONS OF THE PROJECT SANITATION DISTRICT IS TO BE DETERMINED BY THE COUNTY ENGINEER. A PERMIT FOR IMMEDIATE WORK SHALL BE OBTAINED BY THE SANITATION DISTRICT FOR SAID WORK.



NOTE ON TRACT



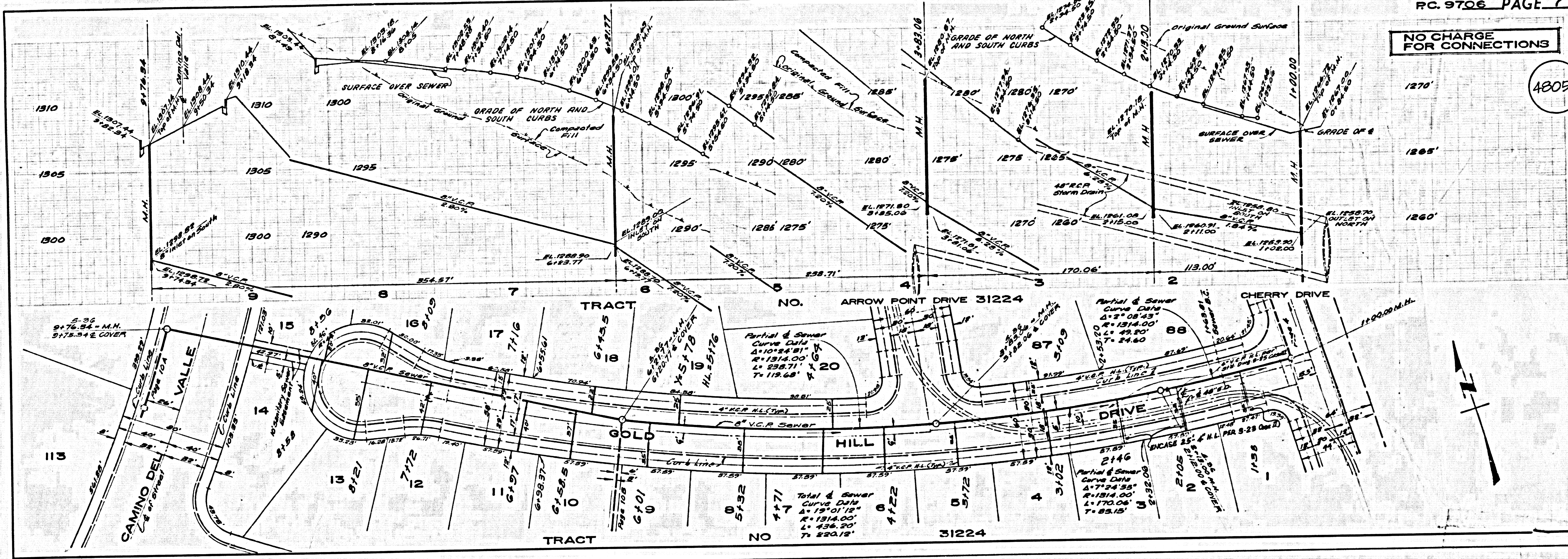
NOTE ON ASSISE ON TCAAT



SOUTHERN CALIFORNIA BLUEPRINT CO. DRAWN BY T. D. HART

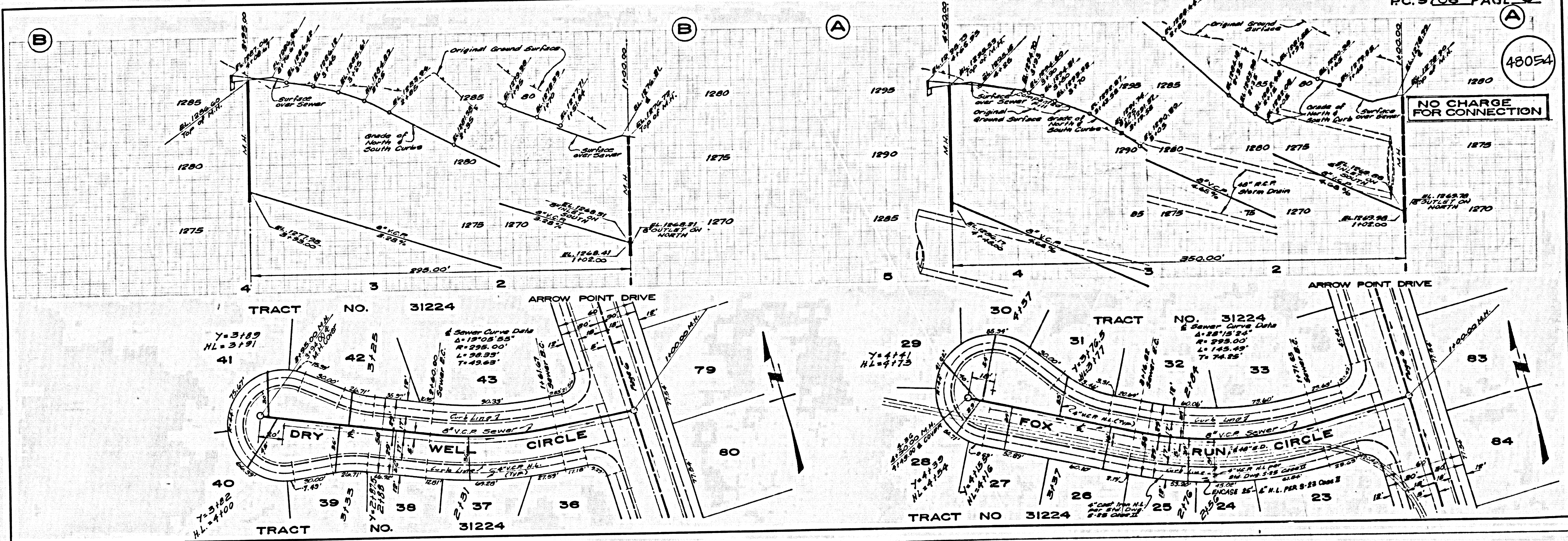
NO CHARGE FOR CONNECTIONS

48053

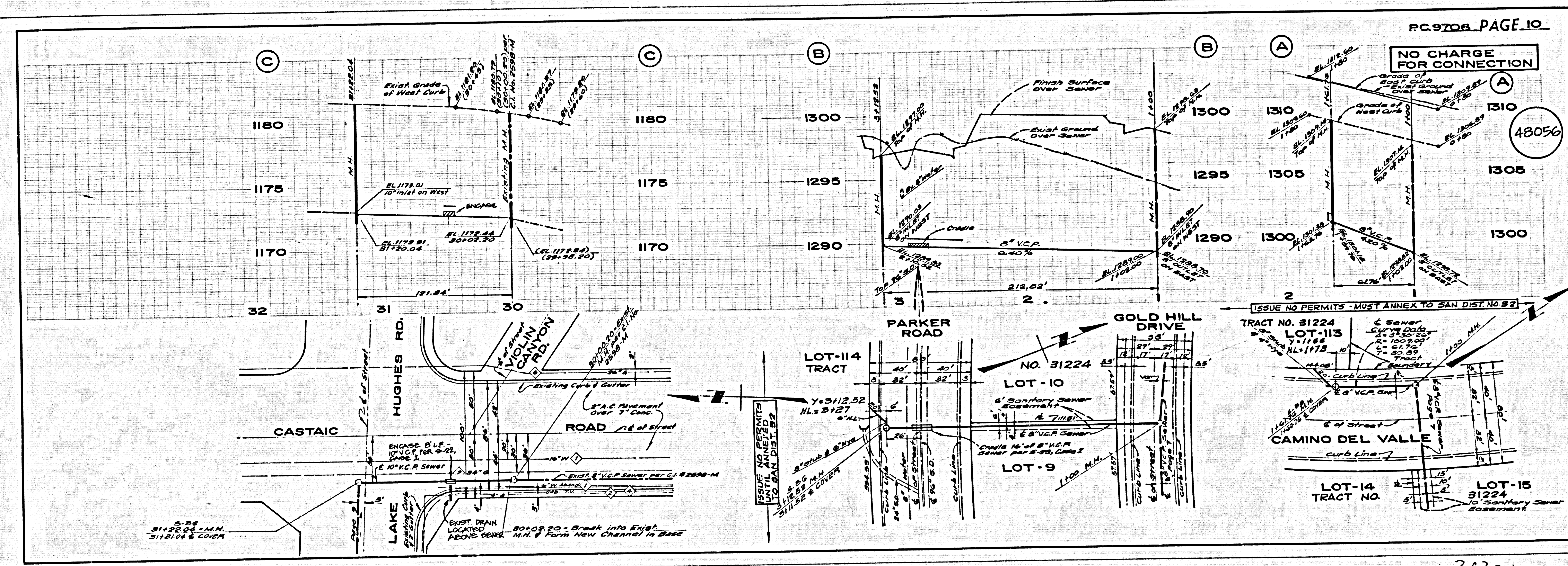
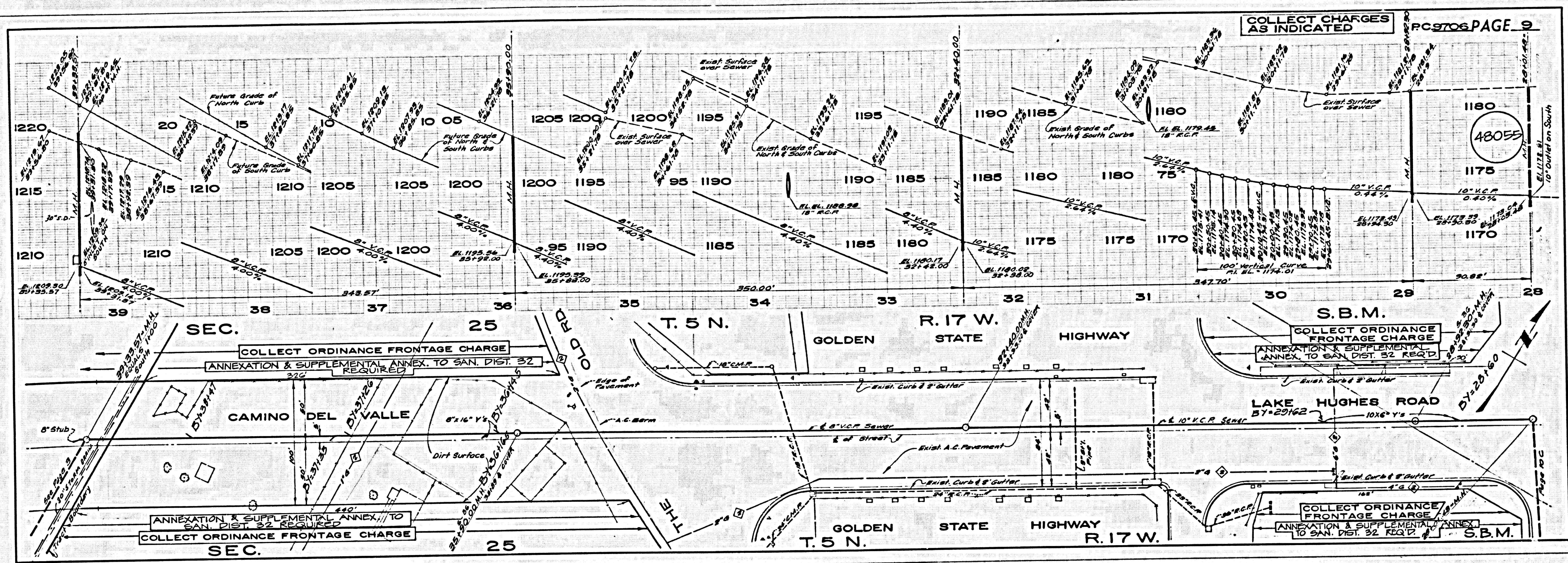


NO CHARGE FOR CONNECTION

48054



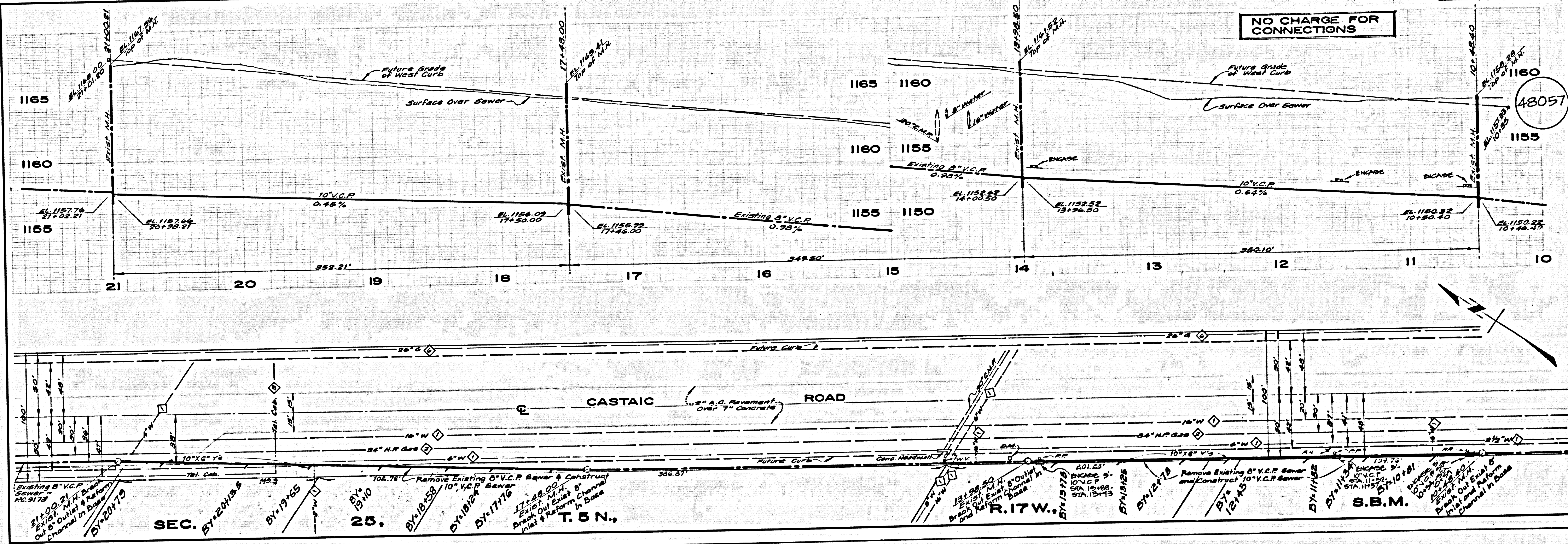
SOUTHERN CALIFORNIA BLUEPRINT CO.



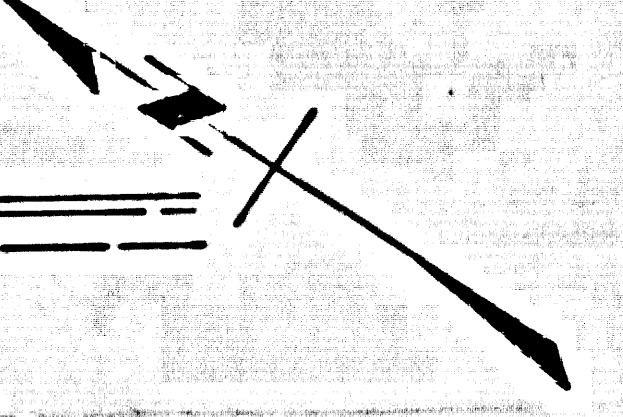
307024 ASSISE ON T/CART

31224

NO CHARGE FOR CONNECTIONS



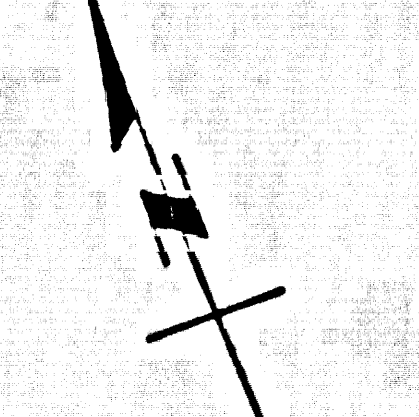
48057



NO CHARGE FOR CONNECTIONS



48058



NOTE ON TYPING