

TO BE CONSTRUCTED IN  
**TRACT NO 32975**  
**PRIVATE CONTRACT NO. 9712**

W.S. 38-84  
 3 SHEETS, 5 PAGES  
 SCALE: VERT. 1" = 8' JUNE, 1970  
 HORIZ. 1" = 40'  
 PREPARED IN THE OFFICES OF  
**L. INC. & HILLEBRAND, INC.**  
 2025 LUTHERAN DRIVE  
 SAN MARINO, CALIF. 91076  
 BY: *[Signature]* REG. C. E. No. 10222

47998

**PRIVATE ENGINEERS NOTICE TO CONTRACTORS**

The existence and location of any underground utility pipes or structures shown on these plans are obtained by search of the available records. To the best of our knowledge there are no existing utilities except as shown on these plans. The contractor is required to take due precautionary measures to protect the utility lines shown and any other lines not of record or not shown on these plans.

*[Signature]*  
 Registered Engineer R.C.E. 1933

REVISION  
 PAGE 1: REDRAW INDEX MAP TO AGREE WITH CHANGES MADE ON P.C. 9712 WITH REGARD TO OUTLET DESIGN.  
 APPROVED BY: *[Signature]* 7/13/60  
 L.A. COUNTY ENGINEER DATE

ISSUE NO PERMITS UNTIL  
 P.C. 9713 IS ACCEPTED.

BEFORE BREAKING INTO OR CONSTRUCTION ON A COUNTY SANITATION DISTRICT SEWER AND PRIOR TO FINAL ACCEPTANCE OF THE PROJECT, SANITATION DISTRICT INSPECTOR SHALL BE NOTIFIED BY PHONE 361-6000 SO THAT REQUIRED INSPECTION CAN BE MADE.

NO CONNECTION WITH THE DISPOSAL OF INDUSTRIAL WASTES SHALL BE MADE TO SEWERS SHOWN ON THESE PLANS UNTIL A PERMIT FOR INDUSTRIAL WASTE WATER DISCHARGE HAS BEEN ISSUED BY THE SANITATION DISTRICTS FOR SAID CONNECTION.

18. A. B. S. COMPOSITE PIPE SHALL BE BEDDED IN CONFORMANCE WITH THE TABLE IN SECTION B-3 OF PART IV OF THE SPECIAL PROVISIONS.

**GENERAL NOTES: DOUBLE SCALE**

- ELEVATIONS ARE IN FEET ABOVE U.S.C. & G.S. SEA LEVEL DATUM OF 1929.
- NO REVISIONS SHALL BE MADE IN THESE PLANS WITHOUT THE APPROVAL OF THE COUNTY ENGINEER.
- NO REVISIONS SHALL BE MADE IN THESE PLANS WITHOUT THE APPROVAL OF THE COUNTY ENGINEER.
- GRADES TO WHICH THIS IMPROVEMENT IS TO BE CONSTRUCTED ARE SHOWN ON PLANS AND PROFILES. GRADE POINTS FOR TOP OF CURB, CENTER LINE OF STREETS, OR CENTER LINE OF ALLEYS ARE SHOWN BY CIRCLES ON PROFILES. AT ALL POINTS BETWEEN DESIGNATED GRADE POINTS THE GRADE SHALL BE ESTABLISHED SO AS TO CONFORM TO A STRAIGHT LINE DRAWN BETWEEN SAID DESIGNATED POINTS.
- THE PRIVATE ENGINEER SHALL FURNISH THE COUNTY ENGINEER WITH GRADE SHEETS AND STATIONINGS FOR ALL HOUSE LATERALS AND "T" OR "Y" BRANCHES AND SHALL PROVIDE STAKES FOR THEM AT THEIR PROPER LOCATIONS WITH STATIONINGS PLAINLY MARKED. ALL HOUSE LATERALS SHALL BE CONSTRUCTED IN A STRAIGHT ALIGNMENT AT RIGHT ANGLES FROM THE MAIN LINE SEWER EXCEPT AS SHOWN ON THE PLANS. HOUSE LATERALS FROM CHIMNEYS SHALL NOT HAVE AN ANGLE OF LESS THAN 45° WITH THE MAIN LINE SEWER. ANY CHANGE IN ALIGNMENT SHALL BE INDICATED IN WRITING BY THE PRIVATE ENGINEER.
- THE PRIVATE ENGINEER SHALL FURNISH THE HOUSE LATERAL INLET AT THE PROPERTY LINE BELOW THE TOP OF CURB ELEVATION FOR EACH HOUSE LATERAL ON THE GRADE SHEET.
- BEFORE WORK CAN BE STARTED, THE CONTRACTOR MUST OBTAIN A PERMIT TO EXCAVATE IN COUNTY STREETS FROM THE L.A. COUNTY ROAD DEPT., DISTRICT OFFICE NO. 1, AND PAY A FEE TO THE COUNTY ENGINEER, 222 N. MAIN ST., DISTRICT OFFICE, TO COVER THE COST OF CONSTRUCTION INSPECTION AND RECORD PLANS.
- APPROVAL OF THIS PLAN BY THE COUNTY OF LOS ANGELES DOES NOT CONSTITUTE A REPRESENTATION AS TO THE ACCURACY OF THE LOCATION OF OR THE EXISTENCE OR NON-EXISTENCE OF ANY UNDERGROUND UTILITY PIPE, OR STRUCTURE WITHIN THE LIMITS OF THE PROJECT. THIS NOTE APPLIES TO ALL PAGES.
- REFER TO SECTION 7-18.1.1 OF THE STANDARD SPECIFICATIONS, REGARDING SAFETY CROSSBARS.
- PRIOR TO THE ISSUANCE OF THE REQUIRED SEWER CONSTRUCTION PERMIT BY THE COUNTY ENGINEER, THE CONTRACTOR SHALL OBTAIN A PERMIT TO EXCAVATE FROM THE STATE OF CALIFORNIA, DEPARTMENT OF INDUSTRIAL RELATIONS, DIVISION OF INDUSTRIAL SAFETY & SHALL FILE A CERTIFICATE OF WORKERS COMPENSATION INSURANCE WITH THE COUNTY ENGINEER.

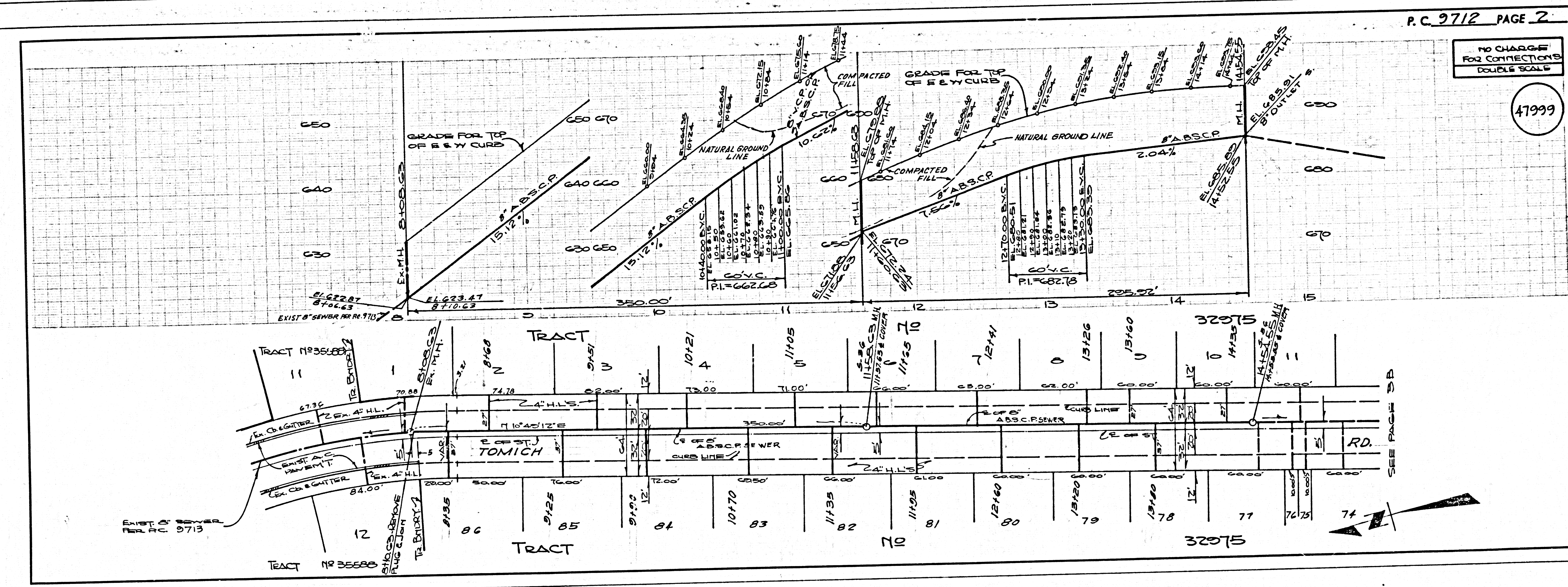
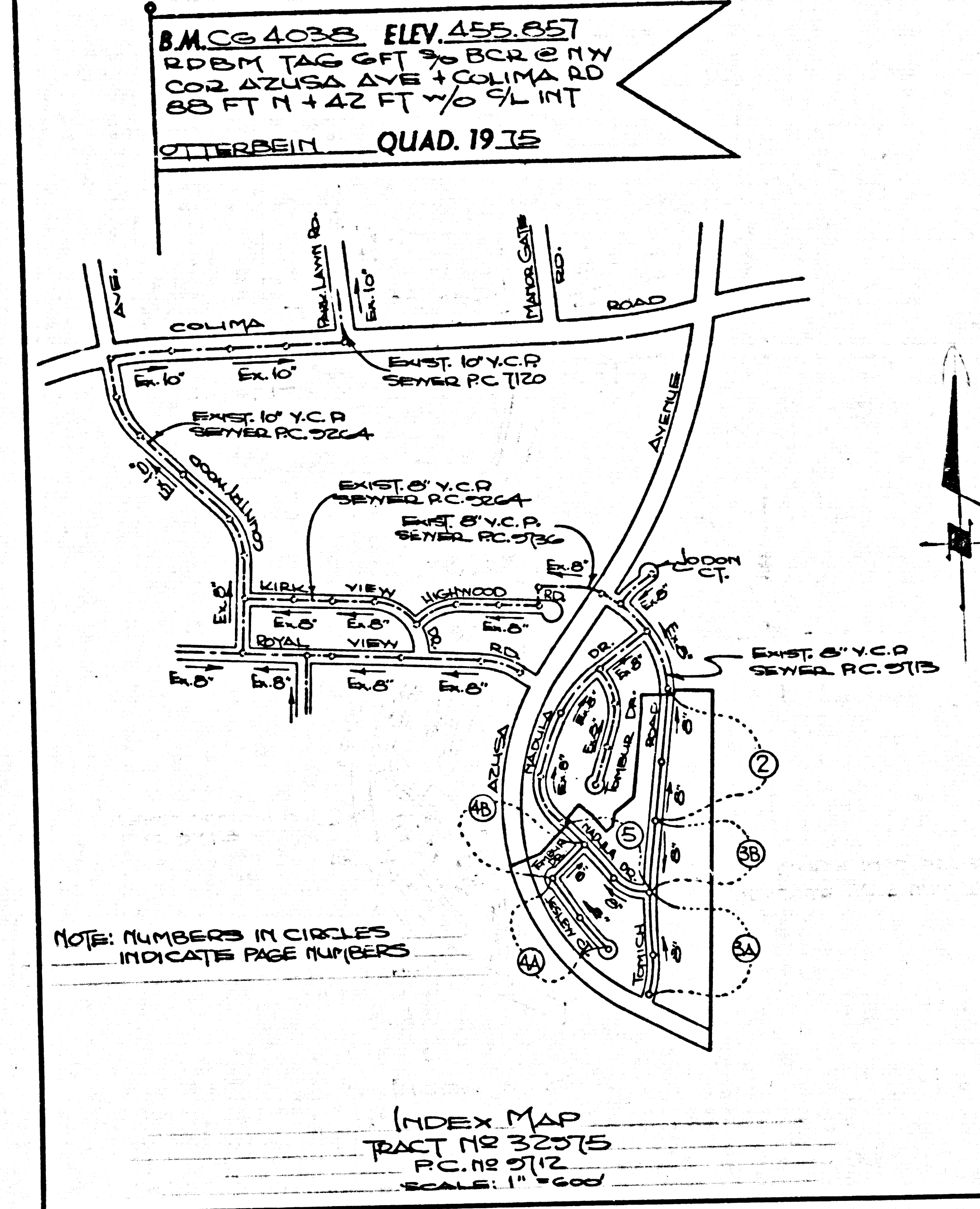
**CONSTRUCTION NOTES:**

- WORK SHALL BE CONSTRUCTED ACCORDING TO THE STANDARD SPECIFICATIONS FOR PUBLIC WORKS CONSTRUCTION (TYPE EDITION WITH LATEST SUPPLEMENTS) AND COUNTY ENGINEER SPECIAL PROVISIONS FOR THE CONSTRUCTION OF SANITARY SEWERS DATED OCTOBER 1, 1967, AND SHALL BE PROSECUTED ONLY IN THE PRESENCE OF THE COUNTY ENGINEER.
- THE CONTRACTOR SHALL NOTIFY THE ENVIRONMENTAL DEVELOPMENT DIVISION PH. (818) 738-2156, AT LEAST TWENTY-FOUR HOURS BEFORE STARTING ANY WORK UNDER THIS CONTRACT.
- HOUSE LATERALS TO BE CONSTRUCTED WITH INVERTS AT PROPERTY LINE & FEET BELOW CURB GRADE EXCEPT AS NOTED.
- NOTE ON THE BRANCHES MAY BE USED FOR CONNECTIONS TO MAINLINE SEWERS EXCEPT AS NOTED.
- ALL STRUCTURES SHALL BE BUILT WITH PRECAST CONCRETE MANHOLES PER S-30, EXCEPT AS NOTED.
- PROVIDE STAKES ON THE PROPERTY LINE OR PROPERTY LINES PRODUCED AT RIGHT ANGLES TO THE SEWER LINE AT THE CENTER LINE OF EACH MANHOLE.
- MANHOLE TOPS IN UNIMPROVED RIGHTS OF WAY TO BE SIX INCHES ABOVE FINISHED GRADE.
- VERTICAL CLAY PIPE JOINTS SHALL BE TYPE "S", "T", OR "B" PER STANDARD SPECIFICATIONS SECTION 306-2.
- IF A POWER POLE IS WITHIN THREE FEET OF THE SEWER, THE SEWER SHALL BE ENCASED PER S-23, CASE 2, TWO FEET ON EACH SIDE FROM THE POINT OF INTERFERENCE.
- IF DURING THE COURSE OF CONSTRUCTION IT IS DETERMINED THAT THERE IS LESS THAN FOUR FEET OF COVER OVER THE TOP OF A MAIN LINE OR HOUSE LATERAL V.C.P. SEWER WHICH IS NOT INDICATED ON THE PLANS, THE PIPE SHALL BE ENCASED PER S-23, CASE 2, UNLESS OTHERWISE APPROVED BY THE COUNTY ENGINEER.
- ALL JOINTS BETWEEN CLAY PIPE AND VITRIFIED CLAY PIPE SHALL BE MADE WITH A RUBBER SLEEVE JOINT, TYPE "C" OR "B", WITH RUBBER IN PLACE.
- SEWERS TO BE TESTED FOR LEAKAGE PER SECTION 306-2.4 OF THE STANDARD SPECIFICATIONS, PART IV, UNLESS OTHERWISE APPROVED BY THE COUNTY ENGINEER.
- RESURFACE ALL TRENCHES WITHIN PAVED AREAS TO MEET L.A. COUNTY ROAD DEPT. OR CALIFORNIA STATE HIGHWAY REQUIREMENTS IN ACCORDANCE WITH PERMITS.
- FULL COMPLIANCE WITH SECTION 306-1.1.8 OF THE SPECIAL PROVISIONS WILL BE REQUIRED FOR BACKFILL IN STREETS. CERTIFICATION OF BACKFILL COMPACTION AND SAND EQUIVALENTS BY A QUALIFIED REGISTERED TESTING LABORATORY SHALL BE PROVIDED BY THE PERMITTEE PRIOR TO THE ISSUANCE OF A CERTIFICATE OF PARTIAL ACCEPTANCE.
- FULL COMPLIANCE WITH PART IV OF THE SPECIAL PROVISIONS IS REQUIRED FOR THE INSTALLATION OF A. B. S. COMPOSITE PIPE.
- MANHOLE WATERS STOP VALVES & CLAMPS ARE REQUIRED FOR THE CONNECTION OF A. B. S. COMPOSITE PIPE TO MANHOLE STRUCTURES.
- A. B. S. COMPOSITE PIPE SHALL BE USED FOR WYE & HOUSE LATERAL CONNECTIONS TO A. B. S. COMPOSITE MAINLINE SEWER PIPE.

THE FOLLOWING LATEST REVISED STANDARD PLANS ON FILE IN THE OFFICE OF THE COUNTY ENGINEER SHALL APPLY IN THE CONSTRUCTION OF THIS PROJECT:

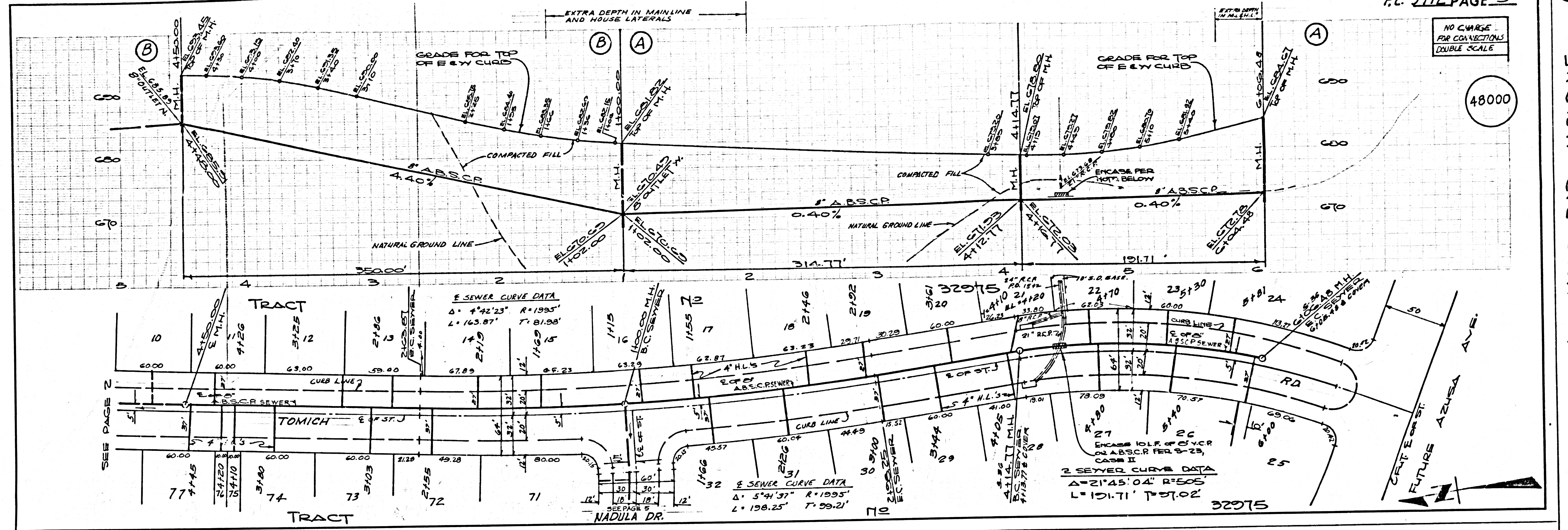
LEADERS	5-1
MINIMUM PUBLIC SAFETY REQUIREMENTS	5-2
BACK RAFFER	5-7
STANDARD MANHOLE STEP	5-8
BEDDING FOR SEWER PIPE	5-9
CEILING AND INCASMENT	5-10
WYE OR THE SUPPORT	5-11
ALUMINUM TRENCH WATERS	5-12
LOCKING MANHOLE FRAME AND COVER	5-13
NONREINFORCED PRECAST CONCRETE MANHOLE	5-14
CHIMNEY PIPE AND BASE	5-15
BEDDING REQUIREMENTS FOR PLASTIC PIPE	5-16

COUNTY OF LOS ANGELES, CALIFORNIA  
 STEPHEN J. MOONICE, COUNTY ENGINEER  
 APPROVED *[Signature]* 9/1/79  
 SAN DIMAS SECONDARY ENGINEER  
 CHECKED *[Signature]* 9/1/79  
 REG. C.E. NO. 16883  
 EA PUENTE BLDG. DIST. 2:00  
 J.N. 0358.01



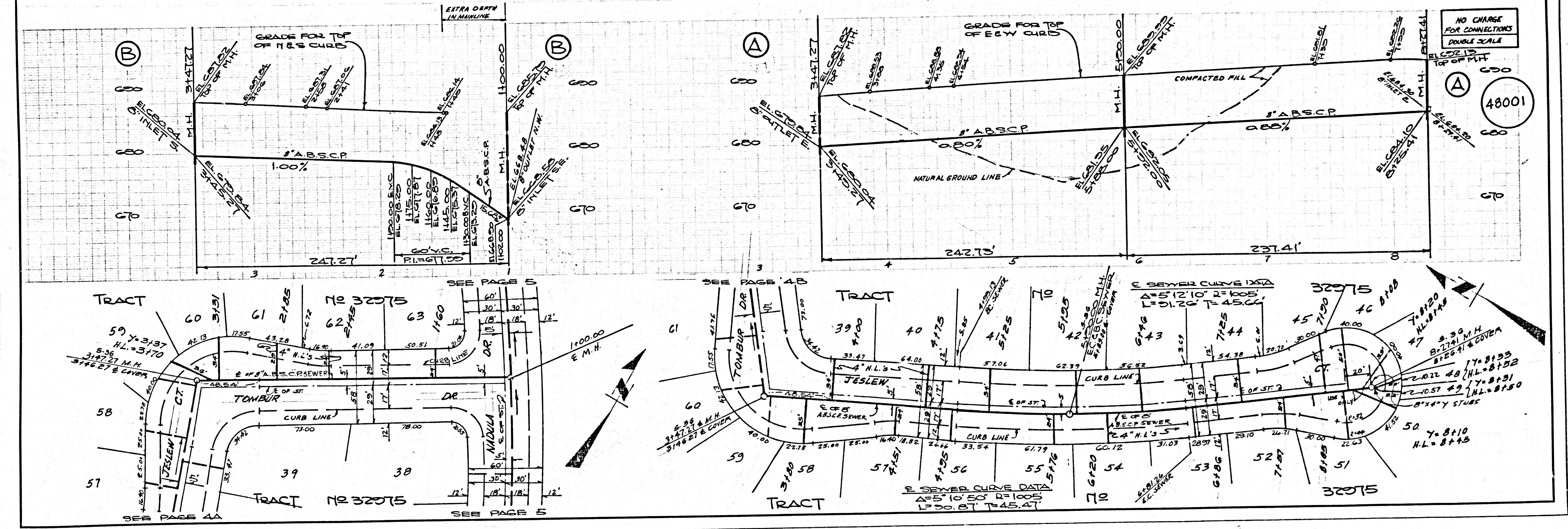
NO CHARGE FOR CONNECTIONS DOUBLE SCALE

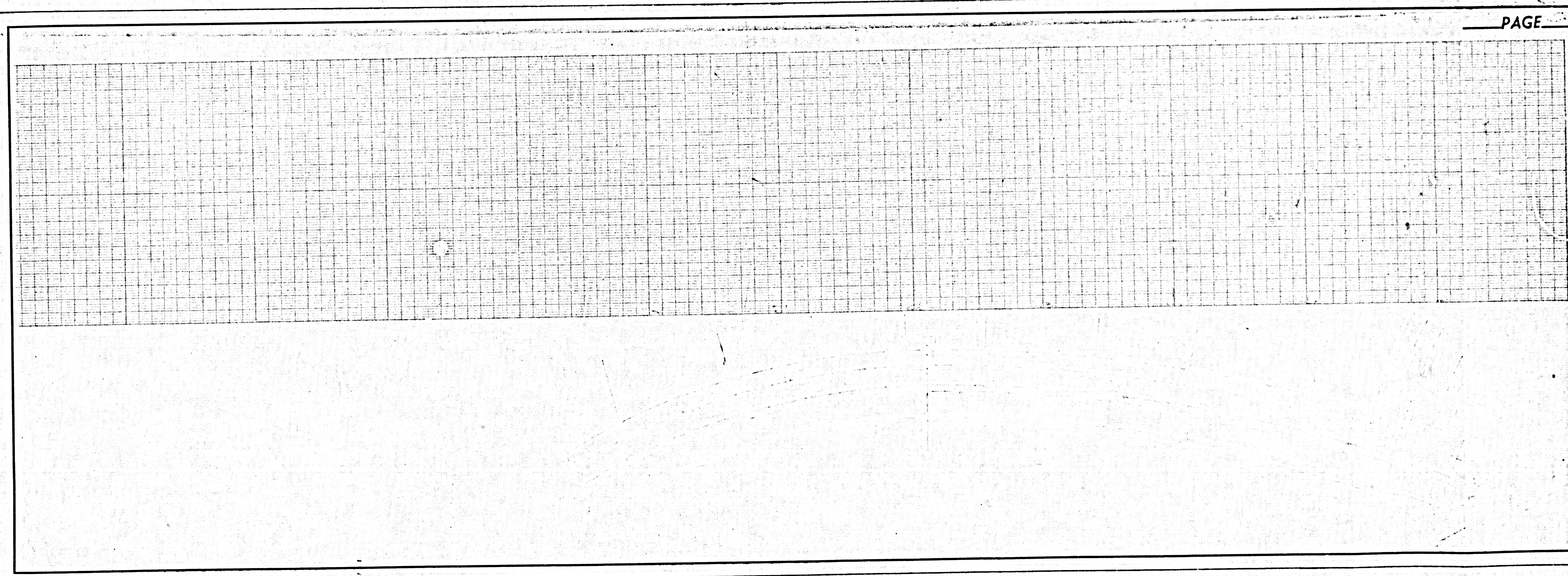
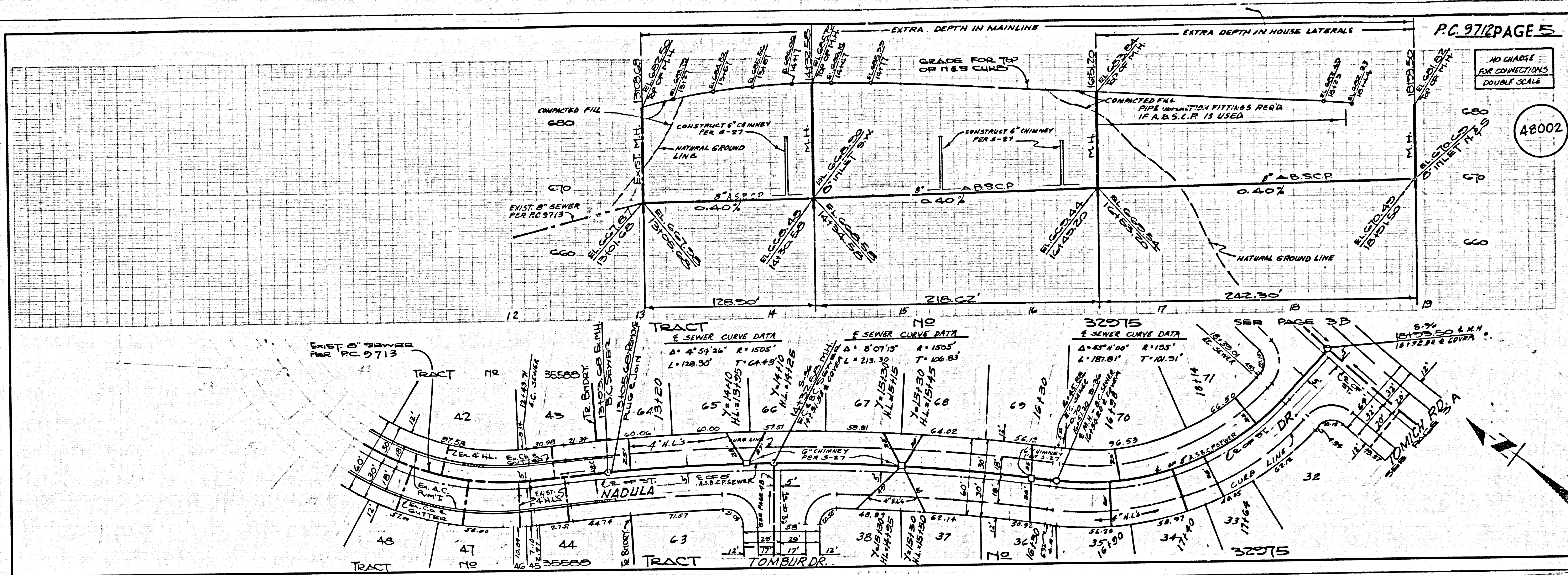
48000



NO CHARGE FOR CONNECTIONS DOUBLE SCALE

48001





SITE ADDRESS ON TRACT

P.C. 9712 PAGE 5

PAGE