

TRACT No 35588  
PRIVATE CONTRACT NO. 9713

W.S. 38-54  
3 SHEETS, 6 PAGES  
48164  
SCALE: HORIZ. 1"=40'  
VERT. 1"=4'  
JUNES, 1979  
PREPARED IN THE OFFICES OF  
LINDA WILKERSON, INC.  
2025 WASHINGTON ST.  
SAN MARINO, CA 91076  
BY: [Signature]  
REG. C.E. No. 19233

THE FOLLOWING LATEST REVISED STANDARD PLANS ON FILE IN THE OFFICE OF THE COUNTY ENGINEER SHALL APPLY IN THE CONSTRUCTION OF THIS PROJECT:

STANDARD PUBLIC SAFETY REQUIREMENTS	5-1
STANDARD MANHOLE	5-2
STANDARD MANHOLE STEP	5-3
BRIDGING FOR SEWER PIPE	5-4
CLADDING AND BRACEMENT	5-5
PIPE ON THE SUPPORT	5-6
ALTERNATE THINNESS WIDTHS	5-7
ENCLOSING MANHOLE FRAMES AND COVERS	5-8
NON-ANCHORED PRECAST CONCRETE MANHOLE	5-9
BEDDING REQUIREMENTS FOR PLASTIC PIPE	5-10

COUNTY OF LOS ANGELES, CALIFORNIA  
STEPHEN J. MOORE, COUNTY ENGINEER  
WALTER E. GARRISON, CHIEF ENGINEER  
APPROVED: [Signature] 9/4/79  
SEAN DIMAS REGIONAL ENGINEER  
CHECKED: [Signature] 9/6/79  
REG. C.E. NO. 11513  
LA PUENTE, BLDG. DIST. 200 I.N. 0358.01

PRIVATE ENGINEERS NOTICE TO CONTRACTORS

The existence and location of any underground utility pipes or structures shown on these plans are obtained by search of the available records. To the best of our knowledge there are no existing utilities except as shown on these plans. The contractor is required to take due precautionary measures to protect the utility lines shown and any other lines not of record or not shown on these plans.

[Signature]  
Registered Engineer R.C.E. 19233

REVISION NO 1  
PAGE 1: REDRAW INDEX MAP TO REFLECT CHANGES WITHIN TRACT WITH REGARD TO OUTLET DESIGN.  
PAGE 2: ELIMINATE ENTIRE PAGE  
PAGE 3: ELIMINATE VIEW 3B  
PAGE 4: RELOCATE OUTLET SEWER FROM AZUSA AVENUE TO OUTCALL INTO P.C. 9736.  
OVERALL: CHANGE LOT NUMBERS TO AGREE WITH RECORDED MAP  
APPROVED BY: Dean E. Johnson 7-3-80  
L.A. COUNTY ENGINEER DATE

REVISION NO 2  
PAGE 4: ADD 4" HOUSE LATERAL AT STATION 5+75 LEFT.  
APPROVED BY: [Signature] 8-13-81  
L.A. COUNTY ENGINEER DATE

ISSUE NO PERMITS UNTIL P.C. 9736 IS ACCEPTED.

BEFORE BREAKING INTO OR CONSTRUCTION ON A COUNTY RIGHT-OF-WAY DISTRICT SEWER AND PIPES TO ENLARGEMENT, A PERMIT MUST BE OBTAINED FROM THE DISTRICT SANITATION DISTRICT INSPECTOR. SUCH PERMIT MUST BE NOTIFIED BY PHONE TO THE DISTRICT SANITATION DISTRICT INSPECTOR. SUCH PERMIT MUST BE OBTAINED FROM THE DISTRICT SANITATION DISTRICT INSPECTOR. SUCH PERMIT MUST BE OBTAINED FROM THE DISTRICT SANITATION DISTRICT INSPECTOR.

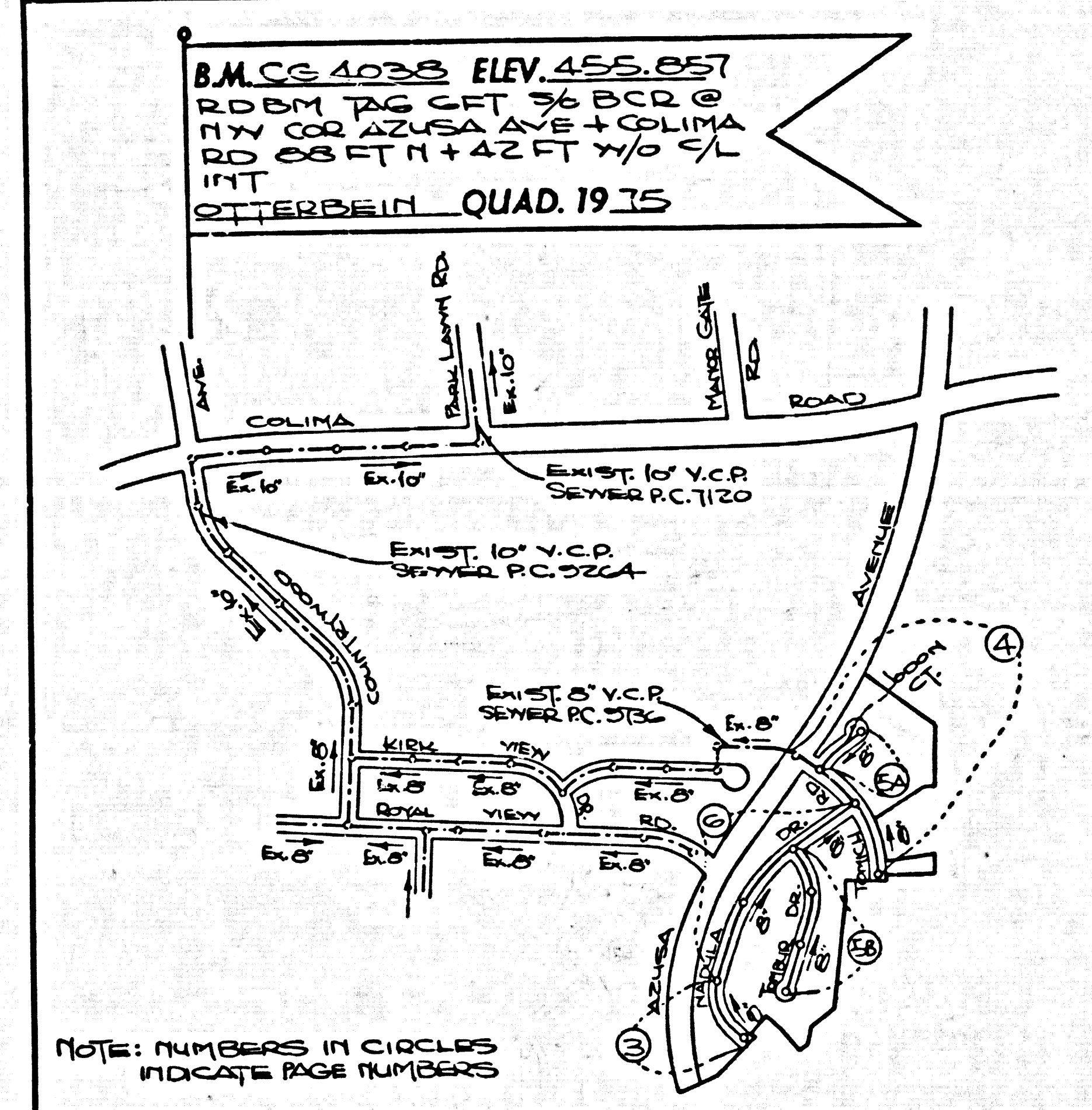
18. A.B.S. COMPOSITE PIPE SHALL BE BEDDED IN CONFORMANCE WITH THE TABLE IN SECTION B-3 OF PART IX OF THE SPECIAL PROVISIONS.

GENERAL NOTES: DOUBLE SCALE

- ELEVATIONS ARE IN FEET ABOVE U.S.C. & G.S. SEA LEVEL DATUM OF 1929.
- NO IMPROVEMENTS SHALL BE MADE IN THESE PLANS WITHOUT THE APPROVAL OF THE COUNTY ENGINEER.
- NO REPRESENTATIVE OF THE COUNTY ENGINEER WILL SURVEY OR LAY OUT ANY PORTION OF THE WORK.
- GRADE TO WHICH THIS IMPROVEMENT IS TO BE CONSTRUCTED ARE SHOWN ON PLANS AND PROFILE. GRADE POINTS FOR TOP OF CURBS, CENTER LINE OF STREETS, OR CENTER LINE OF ALLEYS ARE SHOWN BY CIRCLES ON PROFILES. AT ALL POINTS BETWEEN DESIGNATED POINTS, THE GRADE SHALL BE ESTABLISHED SO AS TO CONFORM TO A STRAIGHT LINE BETWEEN SAID DESIGNATED POINTS.
- THE PRIVATE ENGINEER SHALL FURNISH THE COUNTY ENGINEER WITH GRADE SHEETS AND STATIONING FOR ALL HOUSE LATERALS AND "T" OR "Y" MANHOLES AND SHALL PROVIDE GRADE FOR THEM AT THEIR PROPER LOCATIONS. GRADE POINTS FOR TOP OF CURBS, CENTER LINE OF STREETS, OR CENTER LINE OF ALLEYS ARE SHOWN BY CIRCLES ON PROFILES. AT ALL POINTS BETWEEN DESIGNATED POINTS, THE GRADE SHALL BE ESTABLISHED SO AS TO CONFORM TO A STRAIGHT LINE BETWEEN SAID DESIGNATED POINTS.
- THE PRIVATE ENGINEER SHALL FURNISH THE COUNTY ENGINEER WITH GRADE SHEETS AND STATIONING FOR ALL HOUSE LATERALS AND "T" OR "Y" MANHOLES AND SHALL PROVIDE GRADE FOR THEM AT THEIR PROPER LOCATIONS. GRADE POINTS FOR TOP OF CURBS, CENTER LINE OF STREETS, OR CENTER LINE OF ALLEYS ARE SHOWN BY CIRCLES ON PROFILES. AT ALL POINTS BETWEEN DESIGNATED POINTS, THE GRADE SHALL BE ESTABLISHED SO AS TO CONFORM TO A STRAIGHT LINE BETWEEN SAID DESIGNATED POINTS.
- BEFORE WORK CAN BE STARTED, THE CONTRACTOR MUST OBTAIN A PERMIT TO EXCAVATE IN COUNTY STREETS FROM THE L.A. COUNTY ROAD DEPT., DISTRICT OFFICE NO. 1, AND PAY A FEE TO THE COUNTY ENGINEER, 215 E. BOYKIN AVE., SAN DIMAS, CALIF. 91764.
- IF WORK IS TO BE DONE IN A STATE HIGHWAY, A PERMIT MUST BE OBTAINED FROM THE STATE OF CALIFORNIA, DIVISION OF HIGHWAYS, 120 SOUTH SPUR STREET, LOS ANGELES, CALIFORNIA.
- APPROVAL OF THIS PLAN BY THE COUNTY OF LOS ANGELES DOES NOT CONSTITUTE A REPRESENTATION AS TO THE ACCURACY OF THE LOCATION OF OR THE EXISTENCE OR NON-EXISTENCE OF ANY UNDERGROUND UTILITY PIPE, OR STRUCTURE WITHIN THE LIMITS OF THE PROJECT. THIS NOTE APPLIES TO ALL PAGES.
- REFER TO SECTION 7.04.1 OF THE STANDARD SPECIFICATIONS, REGARDING SAFETY CROSSING.
- PROVIDE TO THE INSURANCE COMPANY THE STANDARD SPECIFICATIONS, REGARDING SAFETY CROSSING.

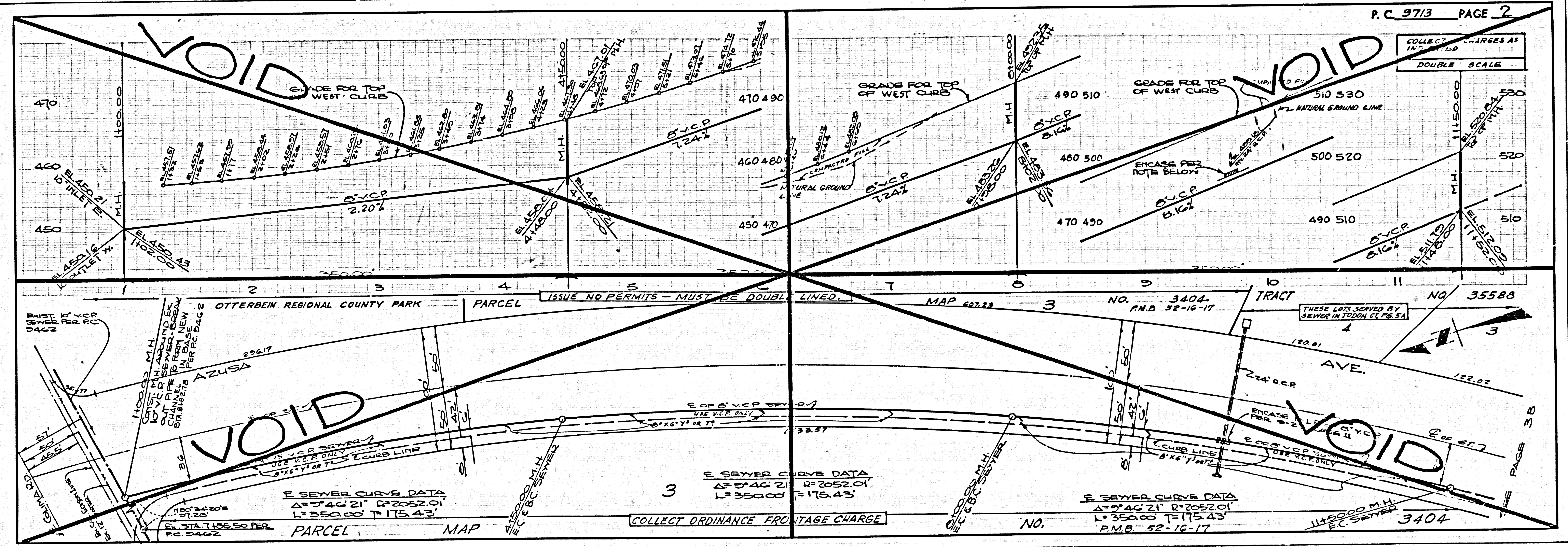
CONSTRUCTION NOTES:

- WORK SHALL BE CONSTRUCTED ACCORDING TO THE STANDARD SPECIFICATIONS FOR PUBLIC WORKS CONSTRUCTION (VERSION WITH CITY OF LOS ANGELES AND COUNTY ENGINEER SPECIAL PROVISIONS FOR THE CONSTRUCTION OF SANITARY SEWERS DATED 5/21/76) AND SHALL BE PROTECTED ONLY IN THE PRESENCE OF THE COUNTY ENGINEER.
- THE CONTRACTOR SHALL NOTIFY THE ENVIRONMENTAL CONSERVATION DIVISION, (D) 738-2106 AT LEAST SEVEN (7) DAYS BEFORE STARTING ANY WORK UNDER THIS CONTRACT.
- HOUSE LATERALS TO BE CONSTRUCTED WITHIN PROPERTY LINE A PART BELOW CURB GRADE EXCEPT AS NOTED.
- NOTE ON THE MANHOLES MAY BE USED FOR CONNECTIONS TO EXISTING SEWER SYSTEMS AS NOTED. IF USED, ALL STRUCTURES SHALL BE 8" MINIMUM MANHOLES PER 8" OR PRECAST CONCRETE MANHOLES PER 8" AS NOTED.
- PROVIDE STAIRS ON THE PROPERTY LINE OR PROPERTY LINE PRODUCE AT RIGHT ANGLES TO THE SEWER LINE AT THE CENTER LINE OF EACH MANHOLE.
- MANHOLE TOPS IN UNIMPROVED RIGHTS OF WAY TO BE 6" ABOVE FINISHED GRADE.
- VERTICAL CLAY PIPE JOINTS SHALL BE TYPE "B", "C", OR "D" PER STANDARD SPECIFICATIONS SECTION 502-2.
- IF A POWER POLE IS WITHIN THREE FEET OF THE SEWER, THE SEWER SHALL BE ENCASED PER 5-2, CASE 22 UNLESS OTHERWISE APPROVED BY THE COUNTY ENGINEER.
- IF DURING THE COURSE OF CONSTRUCTION IT IS DETERMINED THAT THERE IS LESS THAN FOUR FEET OF COVER OVER THE TOP OF A MAIN LINE OR HOUSE LATERAL V.C.P. SEWER WHICH IS NOT INDICATED ON THE PLANS, THE PIPE SHALL BE ENCASED PER 5-2, CASE 22 UNLESS OTHERWISE APPROVED BY THE COUNTY ENGINEER.
- ALL JOINTS BETWEEN CAST IRON PIPE AND VITRIFIED CLAY PIPE SHALL BE MADE WITH A RUBBER SLEEVE JOINT, TYPE "C" OR "D".
- WITHIN RIGHTS OF WAY, ALL JOINTS BETWEEN VITRIFIED CLAY PIPE AND CAST IRON PIPE SHALL BE MADE WITH AN APPROVED FITTING.
- SEWER SHALL BE BEDDED PER SECTION B-3 OF THE STANDARD SPECIFICATIONS.
- REPLACE ALL TREES WITHIN PAVED AREAS TO MEET L.A. COUNTY ROAD DEPT. OR CALIFORNIA STATE HIGHWAY REQUIREMENTS IN ACCORDANCE WITH PERMITS.
- FULL COMPLIANCE WITH SECTION 502.1.1 OF THE SPECIAL PROVISIONS WILL BE REQUIRED FOR BACPLIN IN STREETS. CERTIFICATION OF BACPLIN COMPLETION AND LAINE EQUIVALENT BY A QUALIFIED, REGISTERED TESTING LABORATORY SHALL BE PROVIDED BY THE PERMITTEE PRIOR TO THE RESUMPTION OF A CERTIFICATE OF PARTIAL ACCEPTANCE.
- FULL COMPLIANCE WITH PART III OF THE SPECIAL PROVISIONS IS REQUIRED FOR THE INSTALLATION OF A B.S. COMPOSITE PIPE.
- MANHOLE WATER STOP GASKETS & CLAMPS ARE REQUIRED FOR THE CONNECTION OF A.B.S. COMPOSITE PIPE TO EXISTING STRUCTURES.
- A.B.S. COMPOSITE PIPE MUST BE USED FOR ALL HOUSE LATERAL CONNECTIONS TO A.B.S. COMPOSITE MAINLINE SEWER PIPE.



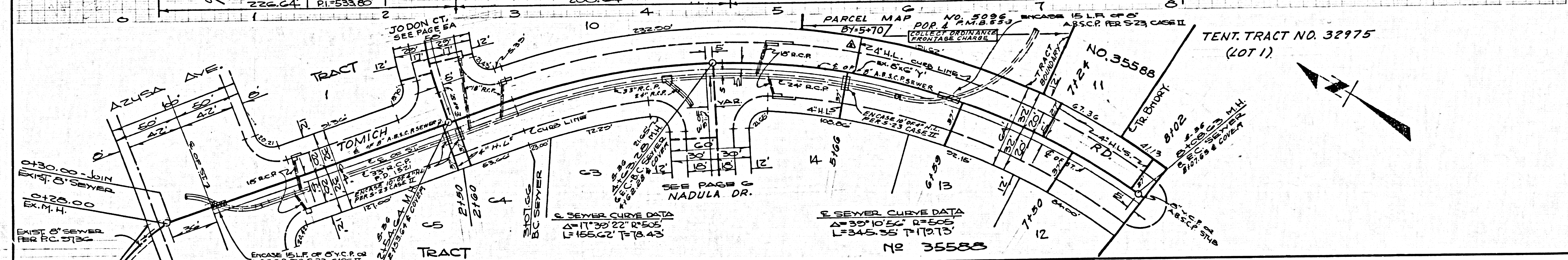
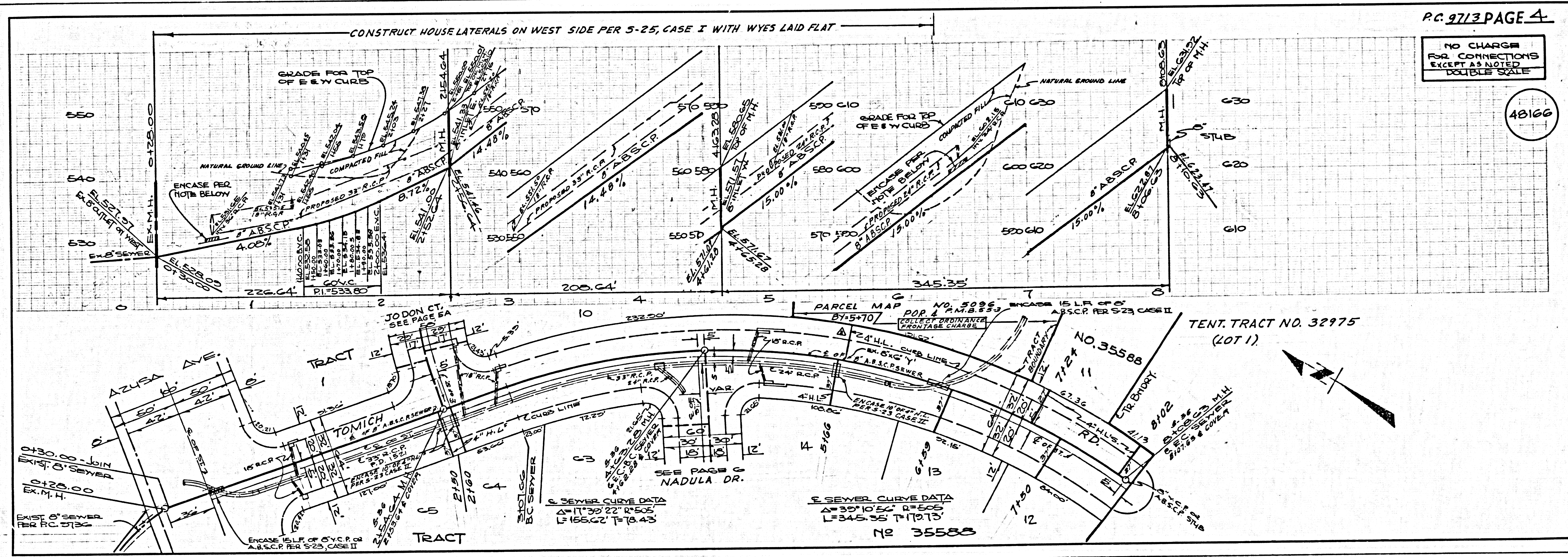
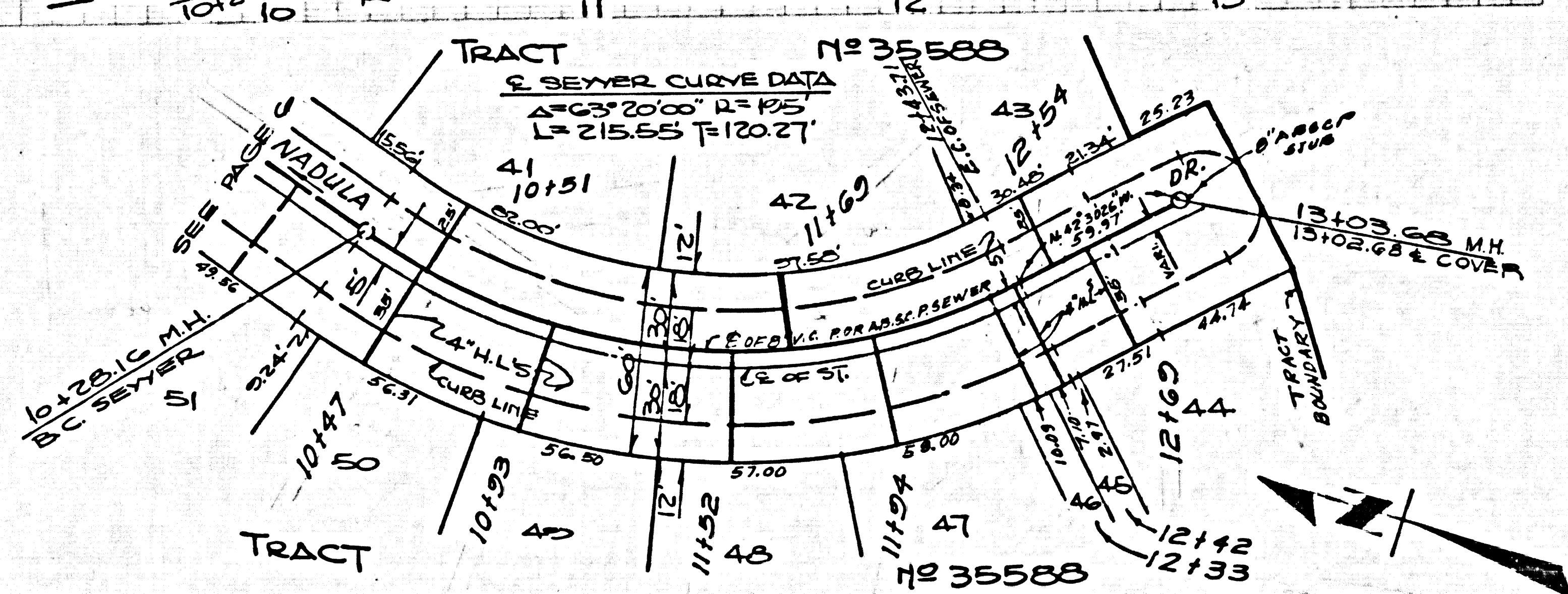
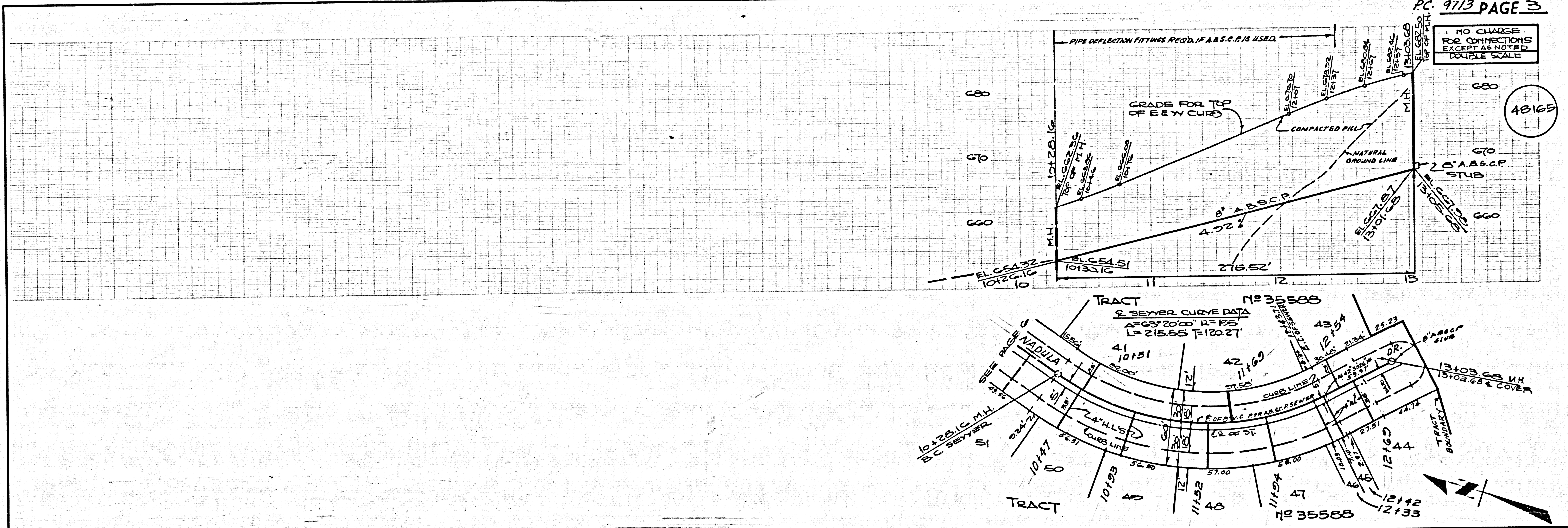
NOTE: NUMBERS IN CIRCLES INDICATE PAGE NUMBERS

INDEX MAP  
TRACT NO 35588  
SCALE: 1"=500'  
P.C. 9713

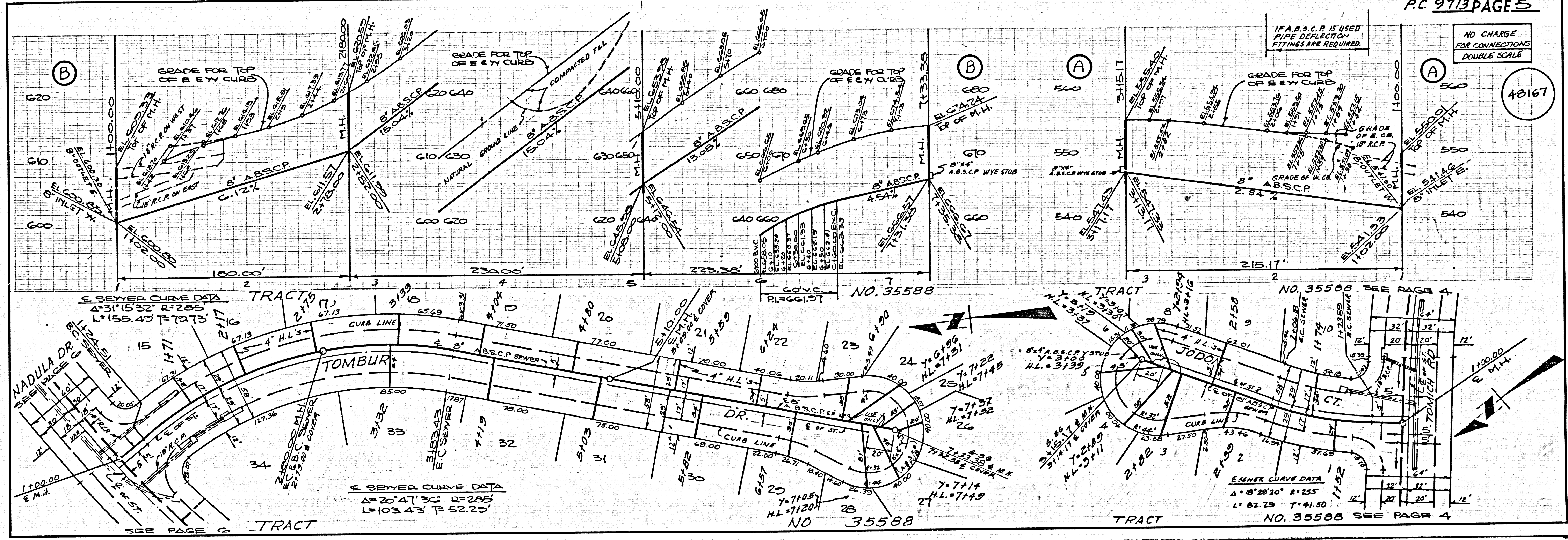


L.A. COUNTY SEWER SHEET NO. 1 SOUTHERN CALIFORNIA BLUEPRINT CO. 578

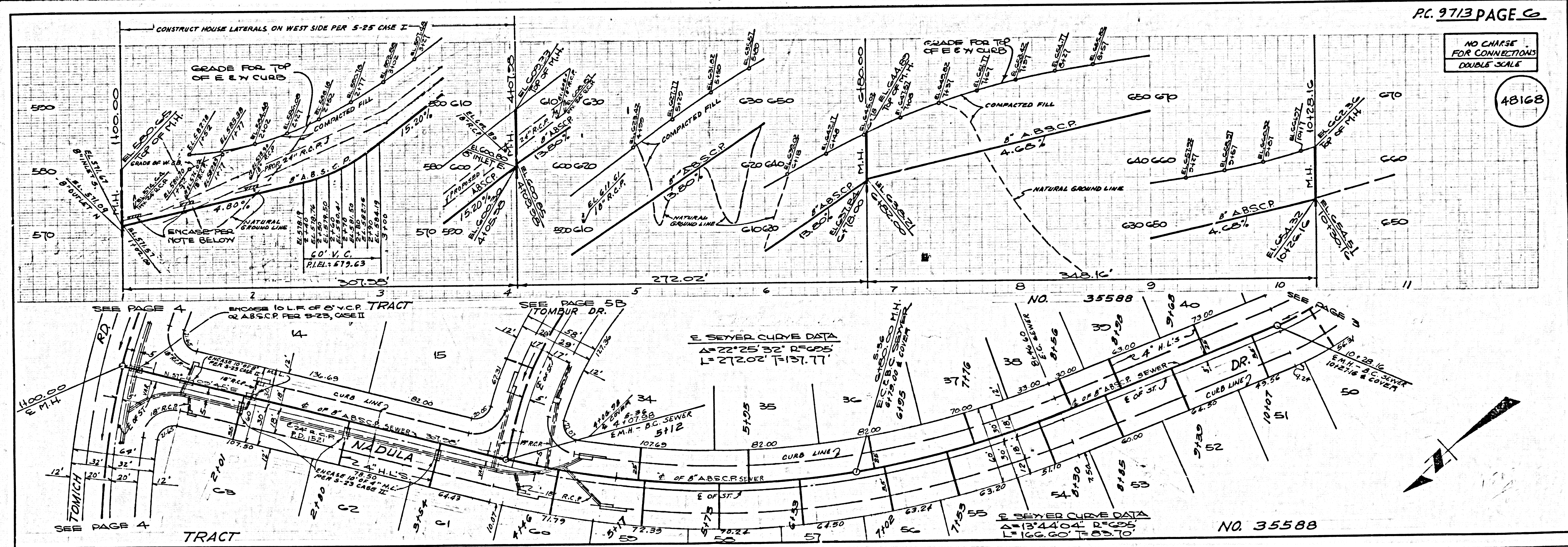
SITE 39 88333 91 TRACT



L.A. COUNTY SEWER SHEET NO. 2 SOUTHERN CALIFORNIA BLUEPRINT CO. 2075 10-78



NO CHARGE FOR CONNECTIONS DOUBLE SCALE



NO CHARGE FOR CONNECTIONS DOUBLE SCALE