

TO BE CONSTRUCTED IN  
**TRACT NO 34275**  
**PRIVATE CONTRACT NO. 9718**  
 INDEX 2705 165  
 W.S. 79-A-2  
 3 SHEETS, 6 PAGES

49311

SCALE: VERT. 1" = 5'  
 HORIZ. 1" = 40'  
 AUGUST, 1979  
 PREPARED IN THE OFFICES OF  
**ENGINEERING SERVICE CORPORATION**  
 4440 HUNTINGTON PARK BLVD., SUITE 100, HUNTINGTON PARK, CALIF. 91768  
 REG. C. E. No. 13032

THE FOLLOWING LATEST REVISED STANDARD PLANS ON FILE IN THE OFFICE OF THE COUNTY ENGINEER SHALL APPLY IN THE CONSTRUCTION OF THIS PROJECT:

MINIMUM PUBLIC SAFETY REQUIREMENTS	5-1
STANDARD MANHOLE STEP	5-2
STANDARD MANHOLE STEP	5-3
STANDARD MANHOLE STEP	5-4
STANDARD MANHOLE STEP	5-5
STANDARD MANHOLE STEP	5-6
STANDARD MANHOLE STEP	5-7
STANDARD MANHOLE STEP	5-8
STANDARD MANHOLE STEP	5-9
STANDARD MANHOLE STEP	5-10
STANDARD MANHOLE STEP	5-11
STANDARD MANHOLE STEP	5-12
STANDARD MANHOLE STEP	5-13
STANDARD MANHOLE STEP	5-14
STANDARD MANHOLE STEP	5-15
STANDARD MANHOLE STEP	5-16
STANDARD MANHOLE STEP	5-17
STANDARD MANHOLE STEP	5-18
STANDARD MANHOLE STEP	5-19
STANDARD MANHOLE STEP	5-20
STANDARD MANHOLE STEP	5-21
STANDARD MANHOLE STEP	5-22
STANDARD MANHOLE STEP	5-23
STANDARD MANHOLE STEP	5-24
STANDARD MANHOLE STEP	5-25
STANDARD MANHOLE STEP	5-26
STANDARD MANHOLE STEP	5-27
STANDARD MANHOLE STEP	5-28
STANDARD MANHOLE STEP	5-29
STANDARD MANHOLE STEP	5-30
STANDARD MANHOLE STEP	5-31
STANDARD MANHOLE STEP	5-32
STANDARD MANHOLE STEP	5-33
STANDARD MANHOLE STEP	5-34
STANDARD MANHOLE STEP	5-35
STANDARD MANHOLE STEP	5-36
STANDARD MANHOLE STEP	5-37
STANDARD MANHOLE STEP	5-38
STANDARD MANHOLE STEP	5-39
STANDARD MANHOLE STEP	5-40
STANDARD MANHOLE STEP	5-41
STANDARD MANHOLE STEP	5-42
STANDARD MANHOLE STEP	5-43
STANDARD MANHOLE STEP	5-44
STANDARD MANHOLE STEP	5-45
STANDARD MANHOLE STEP	5-46
STANDARD MANHOLE STEP	5-47
STANDARD MANHOLE STEP	5-48
STANDARD MANHOLE STEP	5-49
STANDARD MANHOLE STEP	5-50
STANDARD MANHOLE STEP	5-51
STANDARD MANHOLE STEP	5-52
STANDARD MANHOLE STEP	5-53
STANDARD MANHOLE STEP	5-54
STANDARD MANHOLE STEP	5-55
STANDARD MANHOLE STEP	5-56
STANDARD MANHOLE STEP	5-57
STANDARD MANHOLE STEP	5-58
STANDARD MANHOLE STEP	5-59
STANDARD MANHOLE STEP	5-60
STANDARD MANHOLE STEP	5-61
STANDARD MANHOLE STEP	5-62
STANDARD MANHOLE STEP	5-63
STANDARD MANHOLE STEP	5-64
STANDARD MANHOLE STEP	5-65
STANDARD MANHOLE STEP	5-66
STANDARD MANHOLE STEP	5-67
STANDARD MANHOLE STEP	5-68
STANDARD MANHOLE STEP	5-69
STANDARD MANHOLE STEP	5-70
STANDARD MANHOLE STEP	5-71
STANDARD MANHOLE STEP	5-72
STANDARD MANHOLE STEP	5-73
STANDARD MANHOLE STEP	5-74
STANDARD MANHOLE STEP	5-75
STANDARD MANHOLE STEP	5-76
STANDARD MANHOLE STEP	5-77
STANDARD MANHOLE STEP	5-78
STANDARD MANHOLE STEP	5-79
STANDARD MANHOLE STEP	5-80
STANDARD MANHOLE STEP	5-81
STANDARD MANHOLE STEP	5-82
STANDARD MANHOLE STEP	5-83
STANDARD MANHOLE STEP	5-84
STANDARD MANHOLE STEP	5-85
STANDARD MANHOLE STEP	5-86
STANDARD MANHOLE STEP	5-87
STANDARD MANHOLE STEP	5-88
STANDARD MANHOLE STEP	5-89
STANDARD MANHOLE STEP	5-90
STANDARD MANHOLE STEP	5-91
STANDARD MANHOLE STEP	5-92
STANDARD MANHOLE STEP	5-93
STANDARD MANHOLE STEP	5-94
STANDARD MANHOLE STEP	5-95
STANDARD MANHOLE STEP	5-96
STANDARD MANHOLE STEP	5-97
STANDARD MANHOLE STEP	5-98
STANDARD MANHOLE STEP	5-99
STANDARD MANHOLE STEP	5-100

COUNTY OF LOS ANGELES, CALIFORNIA  
 STEPHEN J. KODICE COUNTY ENGINEER  
 WALTER E. GARRISON CHIEF ENGINEER  
 APPROVED: *Walter E. Garrison* 1/20/79  
 APPROVED: *Stephen J. Kodice* 1/20/79  
 CHECKED: *John David Smith* 1/20/79  
 REG. C.E. NO. 16773  
 SANTA CLARITA VALLEY BLDG. DIST. 2

# DOUBLE SCALE

## CONSTRUCTION NOTES (CONT.):

- SPECIAL BACKFILL IN EASEMENT CONSTRUCTION**
  - Backfill trench and replace other earth so as to achieve the natural or finished grades and slopes shown on the grading plan approved for this development by the Building and Safety Division.
  - All backfill and earth replaced shall be compacted to a minimum of 90% of maximum density per A.S.T.M. Standard method of test D630-57T as modified. Acceptable certification of such compaction shall be submitted to the Environmental Development Division.
- FULL COMPLIANCE WITH PART 17 OF SPECIAL PROVISIONS IS REQUIRED FOR THE INSTALLATION OF A 8" 8" COMPOSITE PIPE.
- MANHOLE WATER STOP GASKETS AND CURBS ARE REQUIRED FOR THE CONNECTION OF 8" 8" COMPOSITE PIPE TO MANHOLE STRUCTURES.
- 8" 8" SOLID WALL PIPE MUST BE USED FOR WPE AND HOUSE LATERAL CONNECTIONS TO 8" 8" COMPOSITE MAINLINE SEWER PIPE.
- 8" 8" COMPOSITE PIPE SHALL BE BEDDED IN CONFORMANCE WITH THE TABLE IN SECTION 8-3.1 OF PART 17 OF SPECIAL PROVISIONS.
- 3" 3" DEFLECTION LOADABLES SHOULD BE USED TO RECONSTRUCT RADIUS OF CURVATURE LESS THAN 200'.

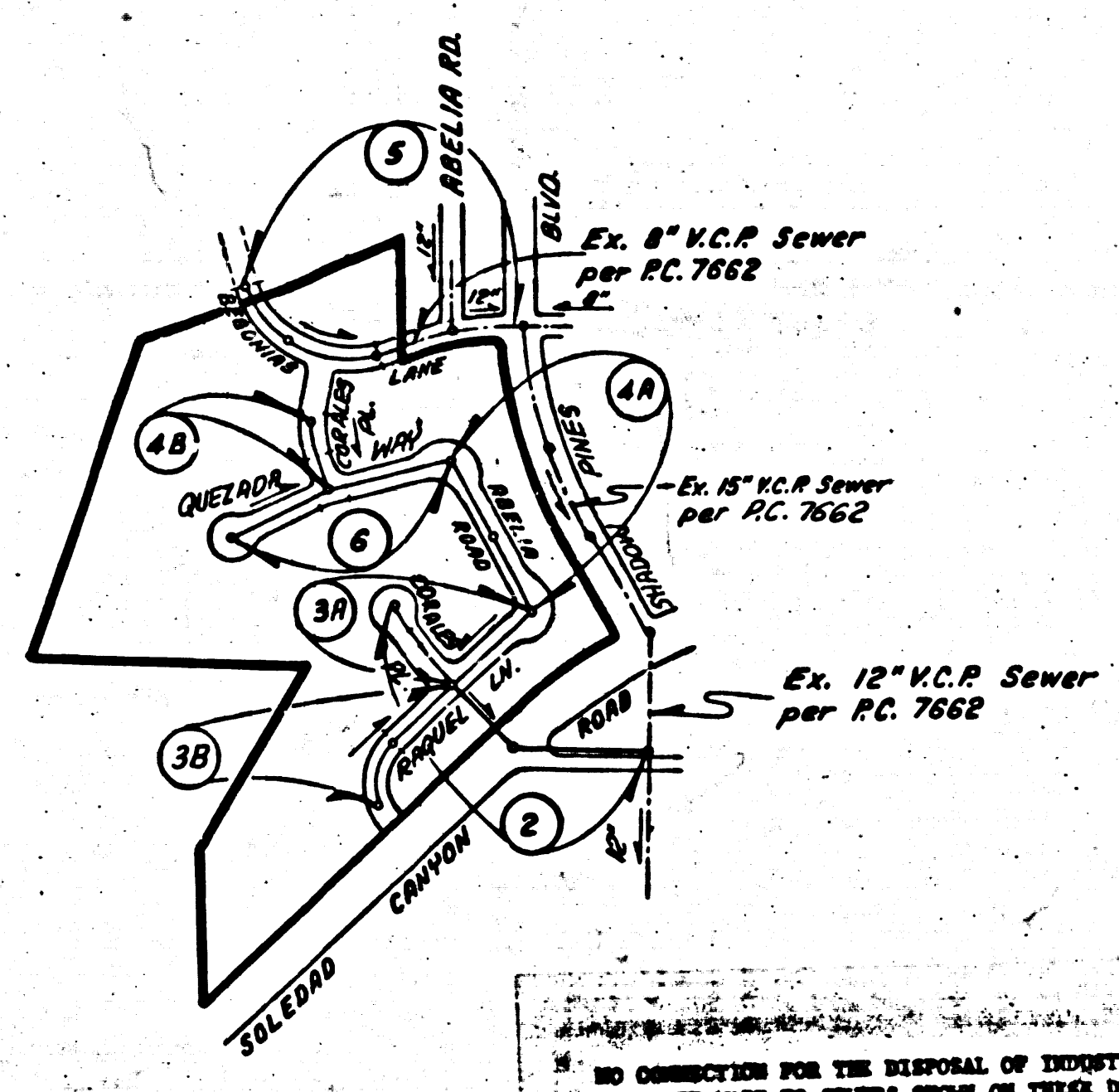
FOR THE NEWHALL COUNTY WATER DISTRICT  
 APPROVED BY: *James Jinks* DATE: 1-27-81  
 JAMES JINKS GENERAL MANAGER  
**NEWHALL COUNTY WATER DISTRICT**

### PRIVATE ENGINEER'S NOTICE TO CONTRACTOR

The existence and location of any underground utility pipes or structures shown on these plans are obtained by a search of the available records. To the best of our knowledge there are no existing utilities except as shown on this map. The Contractor is required to take precautionary measures to protect the utility lines shown and any other lines not of record or not shown on this drawing.

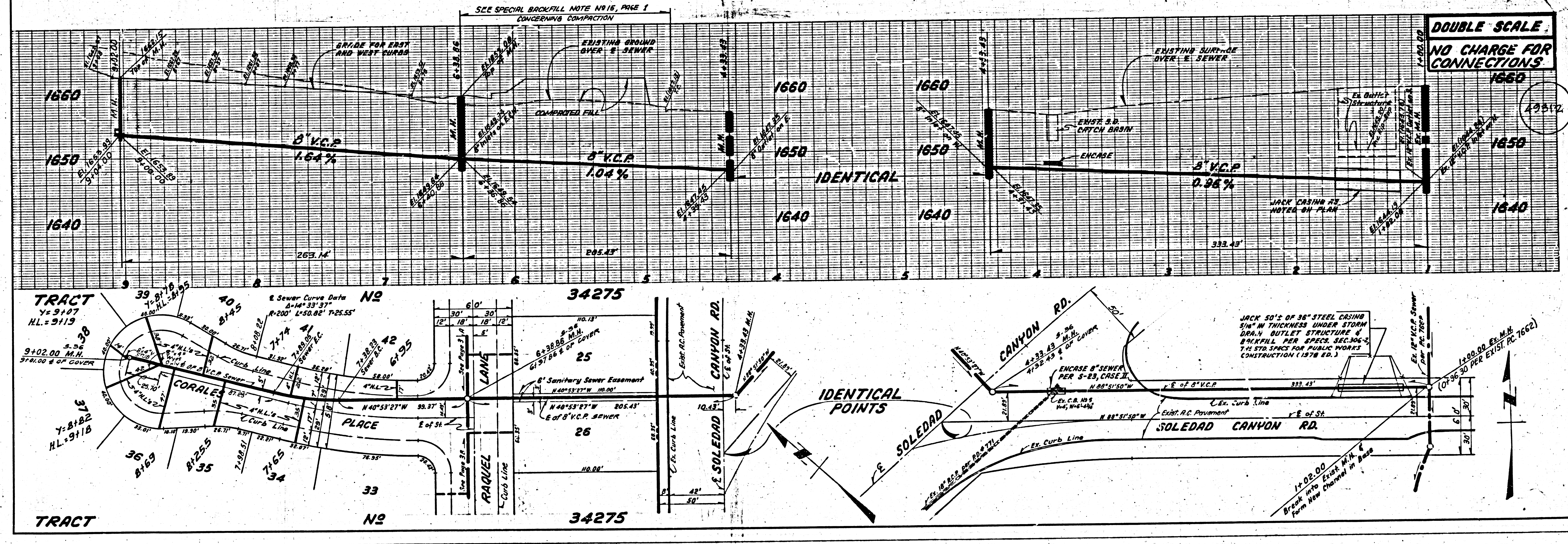
Contractor agrees that he shall assume sole and complete responsibility for job site conditions during the course of construction of this Project, including safety of all persons and property; that this requirement shall apply continuously and not be limited to normal working hours; and that the Contractor shall defend, indemnify and hold the Owner and the Engineer harmless from any and all liability, real or alleged, in connection with the performance of work on this Project, excepting for liability arising from the sole negligence of the Owner or the Engineer.

B.M. **BL 1621** ELEV. **1686.329**  
 USC+65 MGN W END S HDWL SPRR CULV 436.34 RFTS  
 C/L SPRR+400 FT W OF CROSSING LANG STA RD  
 0.25 MI S SOLEDAD CANYON RD MKD (M 486 1955)  
**NEWHALL QUAD. 19 72**



**INDEX MAP**  
 Scale: 1" = 600'  
**P.C. 9718**  
**TRACT NO 34275**

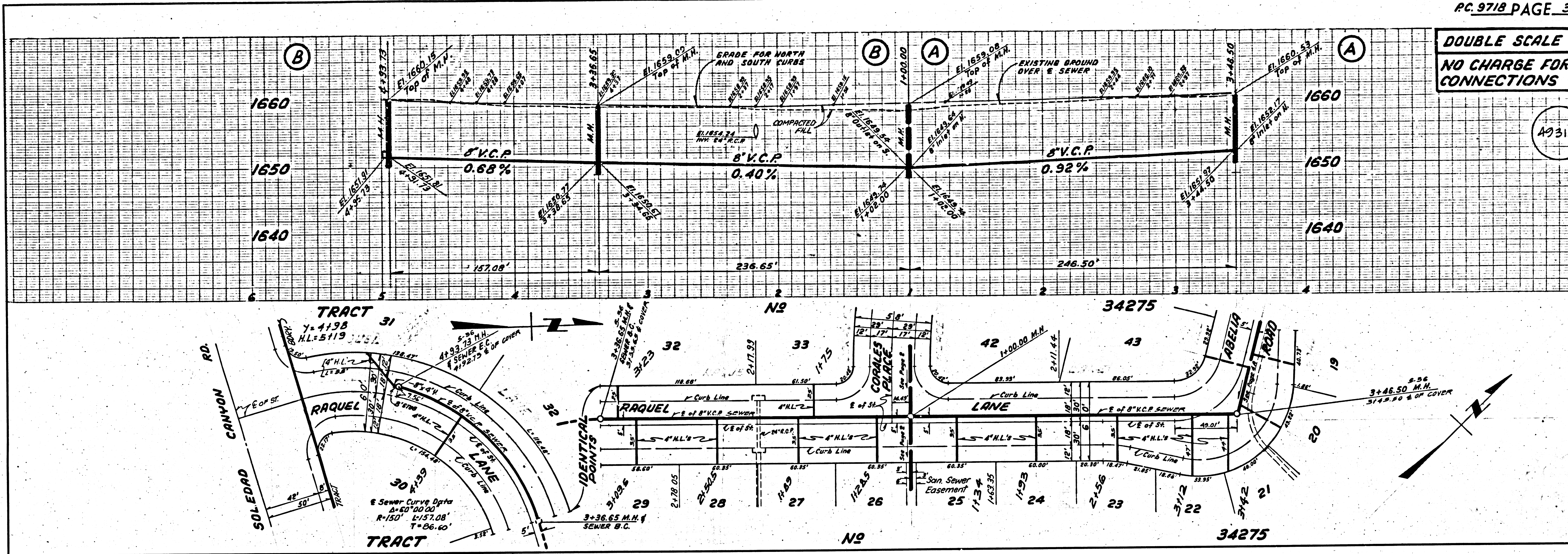
NOTE: NUMBERS IN CIRCLES INDICATE PAGE NUMBERS





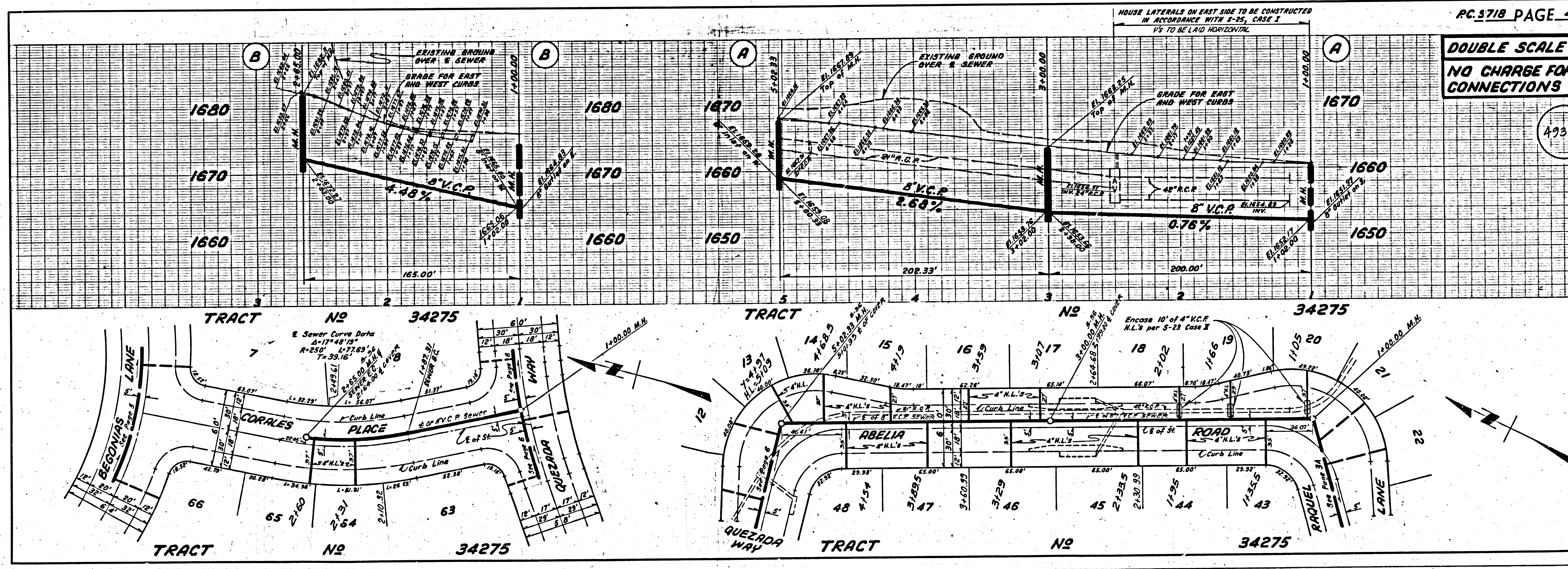
DOUBLE SCALE  
NO CHARGE FOR  
CONNECTIONS

49313



DOUBLE SCALE  
NO CHARGE FOR  
CONNECTIONS

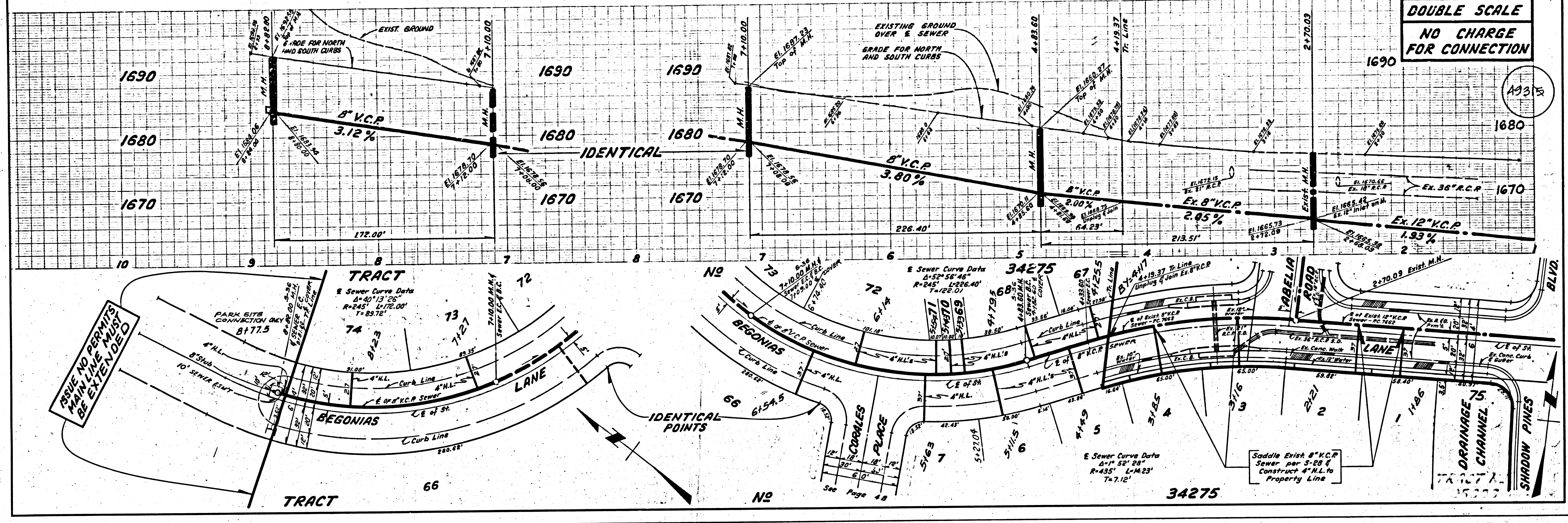
49314



817E 2A  
255PC 9M 9T



DOUBLE SCALE  
NO CHARGE  
FOR CONNECTION



DOUBLE SCALE  
NO CHARGE  
FOR CONNECTION

