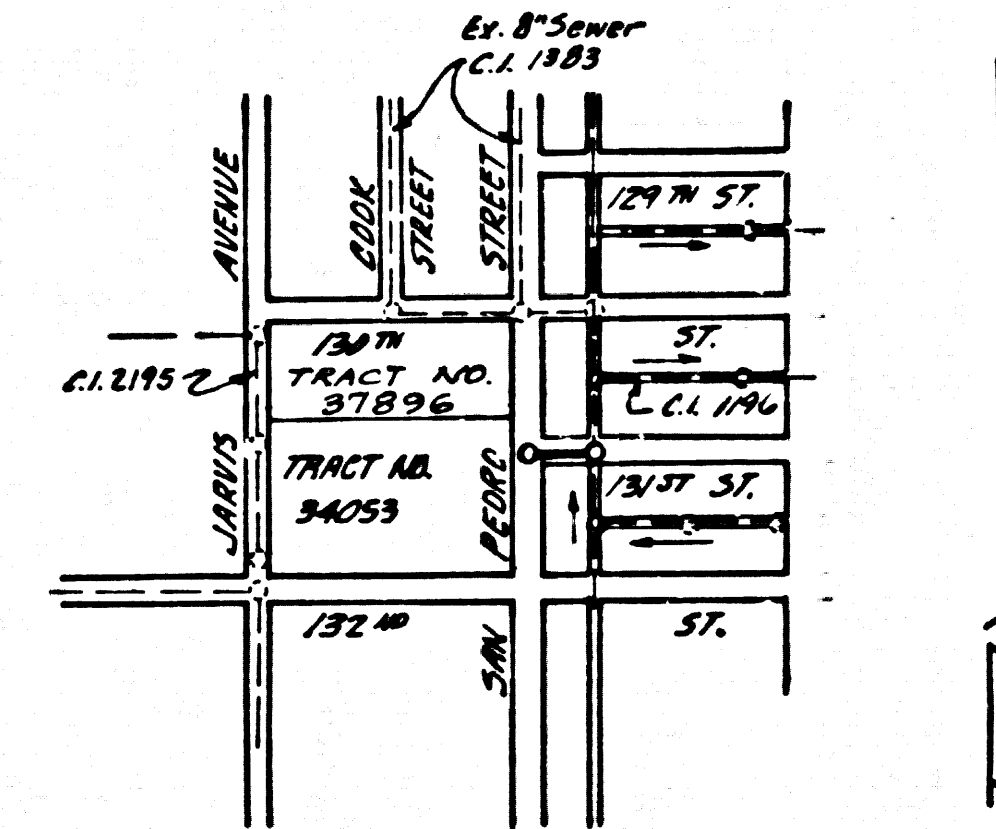


B.M. CV 9639 ELEV. 133.953
 1.5' IN CHISEL 3/8" E.F.D. BGR 8" IN COR.
 EL SEGUNDO BLVD. & SAN PEDRO ST.
 40 FT. N & 51 FT. W/O & INT.
 PLATS QUAD. 1925

REVISION NO. 1 DATE: June 13, 1980
 DELETE 8" x 4" Y STUB. ADD 8" H.L. AT M.H. STA 2+72
 REVISE INDEX MAP. REVISE NOTE 011 TITLE PAGE
 REGARDING H.L. IN JARVIS AVE
 APPROVED: Dean D. Edmister 6/13/80
 OFFICE OF COUNTY ENGINEER DATE



INDEX MAP
 SCALE: 1" = 600'
 P.C. 9721
 TRACT NO. 34053

BEFORE PROCEEDING INTO OR CONSTRUCTION ON A SEWER,
 SANITATION DISTRICT 300-181 SHOULD BE NOTIFIED BY PHONE 688-1161, SO THAT REQUIRED INSPECTION
 CAN BE MADE.

NO CONNECTION FOR THE EXPOSURE OF INDUSTRIAL WASTES
 SHALL BE MADE TO SEWERS SHOWN ON THESE DRAWINGS UNTIL
 A PERMIT FOR INDUSTRIAL WASTE WATER DISCHARGE HAS BEEN
 ISSUED BY THE SANITATION DISTRICTS FOR SAID CONNECTION.

NOTE:
 ONLY THE BUILDINGS FRONTING DIRECTLY ON
 JARVIS AVE, AS RECORDED IN MAP BOOK 924,
 PAGES 47-48, MAY CONNECT INTO THE SEWER
 IN JARVIS AVE. ADJOINING TRACT NO 37896
 MUST BE SERVED BY THE SEWER IN COOK
 STREET.

GENERAL NOTES:

- ELEVATIONS ARE IN FEET ABOVE U.S.C. & G.S. SEA LEVEL DATUM OF 1929.
- NO REVISIONS SHALL BE MADE IN THESE PLANS WITHOUT THE APPROVAL OF THE COUNTY ENGINEER.
- NO REPRESENTATIVE OF THE COUNTY ENGINEER WILL VERIFY OR LAY OUT ANY PORTION OF THE WORK.
- GRADES TO WHICH THIS IMPROVEMENT IS TO BE CONSTRUCTED ARE SHOWN ON PLANS AND PROFILES. GRADE POINTS FOR TOP OF CURBS, CENTER LINE OF STREETS, OR CENTER LINE OF ALLEYS ARE SHOWN BY CIRCLES ON PROFILES AT ALL POINTS BETWEEN DESIGNATED POINTS THE GRADE SHALL BE ESTABLISHED SO AS TO CONFORM TO A STRAIGHT LINE DRAWN BETWEEN SAID DESIGNATED POINTS.
- THE PRIVATE ENGINEER SHALL FURNISH THE COUNTY ENGINEER WITH GRADE SHEETS AND STATIONING FOR ALL HOUSE LATERALS AND "T" OR "Y" BRANCHES AND SHALL PROVIDE STAKES FOR THEM AT THEIR PROPER LOCATIONS WITH STATIONING PLAINLY MARKED. ALL HOUSE LATERALS SHALL BE CONSTRUCTED IN A STRAIGHT ALIGNMENT AT RIGHT ANGLES FROM THE MAIN LINE SEWER EXCEPT AS SHOWN ON THE PLANS. HOUSE LATERALS FROM CHIMNEYS SHALL BE AT AN ANGLE OF LESS THAN 45° WITH THE MAIN LINE SEWER. ANY CHANGE IN ALIGNMENT SHALL BE REQUESTED IN WRITING BY THE PRIVATE ENGINEER.
- THE PRIVATE ENGINEER SHALL FURNISH THE HOUSE LATERAL BUDGET AT THE PROPERTY LINE BELOW THE TOP OF CURB ELEVATION FOR EACH HOUSE LATERAL ON THE GRADE SHEET.
- BEFORE WORK CAN BE STARTED, THE CONTRACTOR MUST OBTAIN A PERMIT TO EXCAVATE IN COUNTY STREETS FROM THE L.A. COUNTY ROAD DEPT., DISTRICT OFFICE NO. 3, AND PAY A FEE TO THE COUNTY ENGINEER, 350 S. WASHINGTON, LOS ANGELES, CALIF. 90012, TO COVER THE COST OF CONSTRUCTION INSPECTION AND RECORD PLANS.
- IF WORK IS TO BE DONE IN A STATE HIGHWAY, A PERMIT MUST BE OBTAINED FROM THE STATE OF CALIFORNIA, DIVISION OF HIGHWAYS, 130 SOUTH SPRING STREET, LOS ANGELES, CALIFORNIA.
- APPROVAL OF THIS PLAN BY THE COUNTY OF LOS ANGELES DOES NOT CONSTITUTE A REPRESENTATION AS TO THE ACCURACY OF THE LOCATION OF OR THE EXISTENCE OR NON-EXISTENCE OF ANY UNDERGROUND UTILITY PIPE, OR STRUCTURE WITHIN THE LIMITS OF THIS PROJECT. THIS NOTE APPLIES TO ALL PAGES.
- REFER TO SECTION 7-18.4.1 OF THE STANDARD SPECIFICATIONS, REGARDING SAFETY ORDERS.
- PRIOR TO ISSUANCE OF THE REQUIRED SEWER CONSTRUCTION PERMIT, THE CONTRACTOR SHALL OBTAIN AND FILE WITH THE COUNTY ENGINEER COPIES OF A PERMIT TO EXCAVATE IN COUNTY STREETS FROM THE LOS ANGELES COUNTY ROAD DEPARTMENT, A PERMIT FOR EXCAVATIONS AND TRENCHES FROM THE STATE OF CALIFORNIA, DIVISION OF INDUSTRIAL SAFETY AND A CERTIFICATE OF WORKMAN'S LIABILITY INSURANCE WITH THE DEPARTMENT OF COUNTY ENGINEER, 350 S. WASHINGTON, Rm. 445, LOS ANGELES, CALIFORNIA, 90012, NAMED AS THE CERTIFICATE HOLDER TO BE NOTIFIED 30 DAYS PRIOR TO CANCELLATION OF POLICY.

CONSTRUCTION NOTES:

- WORK SHALL BE CONSTRUCTED ACCORDING TO THE STANDARD SPECIFICATIONS FOR PUBLIC WORKS CONSTRUCTION 1976 EDITION WITH 7/72 B, SUPPLEMENTS AND COUNTY ENGINEER SPECIAL PROVISIONS FOR THE CONSTRUCTION OF SANITARY SEWERS DATED SEPTEMBER 22, 1976, AND SHALL BE PROTECTED ONLY IN THE PRESENCE OF THE COUNTY ENGINEER.
- THE CONTRACTOR SHALL NOTIFY THE ENVIRONMENTAL DEVELOPMENT & DESIGN, 218-788-2156 AT LEAST TWENTY-FOUR HOURS BEFORE STARTING ANY WORK UNDER THIS CONTRACT.
- HOUSE LATERALS TO BE CONSTRUCTED WITH 1/2" RISE PER FOOT TO PROPERTY LINE.
- "T" OR "Y" BRANCHES MAY BE USED FOR CONNECTIONS TO MAINLINE SEWERS EXCEPT AS NOTED.
- ALL STRUCTURES SHALL BE EITHER BRICK MANHOLES PER S-3 OR PRECAST CONCRETE MANHOLES PER S-3A, EXCEPT AS NOTED.
- PROVIDE STAKES ON THE PROPERTY LINE OR PROPERTY LINES PRODUCED AT RIGHT ANGLES TO THE SEWER LINE AT THE CENTER LINE OF EACH MANHOLE.
- MANHOLE TOPS IN UNIMPROVED AREAS OF WAY TO BE SIX INCHES ABOVE FINISHED GRADE.
- VERTIFIED CLAY PIPE JOINTS SHALL BE TYPE "B", "F", OR "G" PER STANDARD SPECIFICATIONS SECTION 300-2.
- IF A POWER POLE IS WITHIN THREE FEET OF THE SEWER, THE SEWER SHALL BE ENCASED, PER S-23, CASE II, TWO FEET ON EACH SIDE FROM THE POINT OF INTERFERENCE.
- IF DURING THE COURSE OF CONSTRUCTION IT IS DETERMINED THAT THERE IS LESS THAN FOUR FEET OF COVER OVER THE TOP OF A MAIN LINE OR HOUSE LATERAL "Y" SEWER WHICH IS NOT INDICATED ON THE PLANS, THE PIPE SHALL BE ENCASED PER S-23, CASE II UNLESS OTHERWISE APPROVED BY THE COUNTY ENGINEER.
- ALL JOINTS BETWEEN CAST IRON PIPE AND VITRIFIED CLAY PIPE SHALL BE MADE WITH A RUBBER SLEEVE JOINT, TYPE "C" OR "D", WITH BUSHINGS IF NECESSARY PER STANDARD SPECIFICATIONS, SECTION 300-2.
- SEWERS TO BE TESTED FOR LEAKAGE PER SECTION 306.1.4 OF THE STANDARD SPECIFICATIONS AND SPECIAL PROVISIONS.
- RESURFACE ALL TRENCHES WITHIN PAVED AREAS TO MEET L.A. COUNTY ROAD DEPT. OR CALIFORNIA STATE HIGHWAY REQUIREMENTS IN ACCORDANCE WITH PERMITS.
- FULL COMPLIANCE WITH SECTION 306.1.25 OF THE SPECIAL PROVISIONS WILL BE REQUIRED FOR BACKFILL IN STREETS. CERTIFICATION OF BACKFILL COMPACTION AND SAND EQUIVALENTS BY A QUALIFIED, REGISTERED TESTING LABORATORY SHALL BE PROVIDED BY THE PERMITTEE PRIOR TO THE ISSUANCE OF A CERTIFICATE OF PARTIAL ACCEPTANCE.

PROFILE, ALIGNMENT AND GRADE OF
SANITARY SEWERS PAGE 1
 TO BE CONSTRUCTED IN
 TRACT NO. 34053
 PRIVATE CONTRACT NO. 9721

W.S. 26
 1 SHEET, 2 PAGES
 SCALE: VERT. 1" = 4'
 HORIZ. 1" = 40'
 MAY, 1979
 PREPARED IN THE OFFICES OF
 PAUL ENGINEERING INC.
 1657 CHARLES BLVD.
 NORTH HAVEN, CALIF.
 BY: Richard A. Kestly
 REG. C. E. NO. 16593

THE FOLLOWING LATEST REVISED STANDARD PLANS ON FILE IN THE OFFICE OF THE COUNTY ENGINEER SHALL APPLY IN THE CONSTRUCTION OF THIS PROJECT:

LEGEND	S-1
MINIMUM PUBLIC SAFETY REQUIREMENTS	S-2
BRICK MANHOLE	S-3
STANDARD MANHOLE STEP	S-3A
BODDING FOR SEWER PIPE	S-3B
CHASING AND ENCASING	S-3C
PIPE ON THE SUPPORT	S-3D
ALLOWABLE TRENCH WIDTHS	S-3E
LOADING MANHOLE FRAMES AND COVERS	S-3F
NON-REINFORCED PRECAST CONCRETE MANHOLE	S-3G

COUNTY OF LOS ANGELES, CALIFORNIA
 STEPHEN J. ROUNCE, COUNTY ENGINEER
 WALTER E. GARRISON, CHIEF ENGINEER
 CO. SAN DIST. NO. 1
 APPROVED: *Richard A. Kestly* 5-7-79
 DATE: *Richard A. Kestly*
 CHECKED: *Ralph Donald Raint* 7/17/79
 DATE: *Ralph Donald Raint*
 MO. C.E. NO. 16583
 CARSON BLDG. DIST. 13

P.C. 9721 PAGE 2

COLLECT CHARGES AS INDICATED

