

TRACT NO. 35598
 PRIVATE CONTRACT NO. 9724

W.S. 33-D4
 SHEET 1 OF 2 PAGES 47800
 SCALE: VERT. 1"=4' HORIZ. 1"=40'
 AUGUST, 1979
 PREPARED IN THE OFFICES OF
THOMSEN ENGINEERING INC.
 10145 E. WHITTIER BLVD., WHITTIER, CA.
 BY: *John C. Thomsen*
 REG. C. E. NO. 2422

- GENERAL NOTES:**
1. SURVEYING WAS BY THE COUNTY ENGINEER & C.E. SEA LEVEL DATUM OF 1929.
 2. NO REVISIONS SHALL BE MADE ON THESE PLANS WITHOUT THE APPROVAL OF THE COUNTY ENGINEER.
 3. NO REPRESENTATIVE OF THE COUNTY ENGINEER WILL SURVEY OR LAY OUT ANY PORTION OF THE WORK.
 4. GRADES TO WHICH THIS IMPROVEMENT IS TO BE CONSTRUCTED ARE SHOWN ON PLANS AND PROFILES. GRADE POINTS FOR TOP OF CURB, CENTER LINE OF STREETS, OR CENTER LINE OF ALLEYS ARE SHOWN BY CIRCLES ON PROFILES. AT ALL POINTS BETWEEN DESIGNATED POINTS THE GRADE SHALL BE ESTABLISHED SO AS TO CONFORM TO A STRAIGHT LINE BETWEEN SAID DESIGNATED POINTS.
 5. THE PRIVATE ENGINEER SHALL FURNISH THE COUNTY ENGINEER WITH GRADE SHEETS AND STATIONING FOR ALL HOUSE LATERALS AND 12" OR 18" BRANCHES AND SHALL PROVIDE STAGES FOR THEM AT THEIR PROPER LOCATIONS WITH STATIONING PLAINLY MARKED. ALL HOUSE LATERALS SHALL BE CONSTRUCTED IN A STRAIGHT ALIGNMENT AT RIGHT ANGLES FROM THE MAIN LINE SEWER EXCEPT AS SHOWN ON THE PLANS. HOUSE LATERALS FROM CHIMNEYS SHALL NOT HAVE AN ANGLE OF LESS THAN 45° WITH THE MAIN LINE SEWER. ANY CHANGE IN ALIGNMENT SHALL BE REQUESTED IN WRITING BY THE PRIVATE ENGINEER.
 6. THE PRIVATE ENGINEER SHALL FURNISH THE HOUSE LATERAL DEPTH AT THE PROPERTY LINE BELOW THE TOP OF CURB ELEVATION FOR EACH HOUSE LATERAL ON THE GRADE SHEET.
 7. BEFORE WORK CAN BE STARTED, THE CONTRACTOR MUST OBTAIN A PERMIT TO EXCAVATE IN COUNTY STREETS FROM THE L.A. COUNTY ROAD DEPT., DISTRICT OFFICE NO. 1, AND PAY A FEE TO THE COUNTY ENGINEER, 801 E. BROADWAY, 2ND FLOOR, REGIONAL OFFICE, TO COVER THE COST OF CONSTRUCTION INSPECTION AND RECORD PLANS.
 8. IF WORK IS TO BE DONE IN A STATE HIGHWAY, A PERMIT MUST BE OBTAINED FROM THE STATE OF CALIFORNIA, DIVISION OF HIGHWAYS, 126 SOUTH SPRING STREET, LOS ANGELES, CALIFORNIA.
 9. APPROVAL OF THIS PLAN BY THE COUNTY OF LOS ANGELES DOES NOT CONSTITUTE A REPRESENTATION AS TO THE ACCURACY OF THE LOCATION OR OF THE EXISTENCE OR NON-EXISTENCE OF ANY UNDERGROUND UTILITY PIPE, OR STRUCTURE WITHIN THE LIMITS OF THIS PROJECT. THIS NOTE APPLIES TO ALL PAGES.
 10. REFER TO SECTION 7-18.2.3 OF THE STANDARD SPECIFICATIONS, REGARDING SAFETY CORDS.
 11. PRIOR TO ISSUANCE OF THE REQUIRED SEWER CONSTRUCTION PERMIT BY THE COUNTY ENGINEER, THE CONTRACTOR SHALL OBTAIN A PERMIT TO EXCAVATE FROM THE STATE OF CALIFORNIA, DEPARTMENT OF INDUSTRIAL RELATIONS, DIVISION OF INDUSTRIAL SAFETY, AND SHALL FILE A CERTIFICATE OF WORKERS COMPENSATION INSURANCE WITH THE COUNTY ENGINEER.

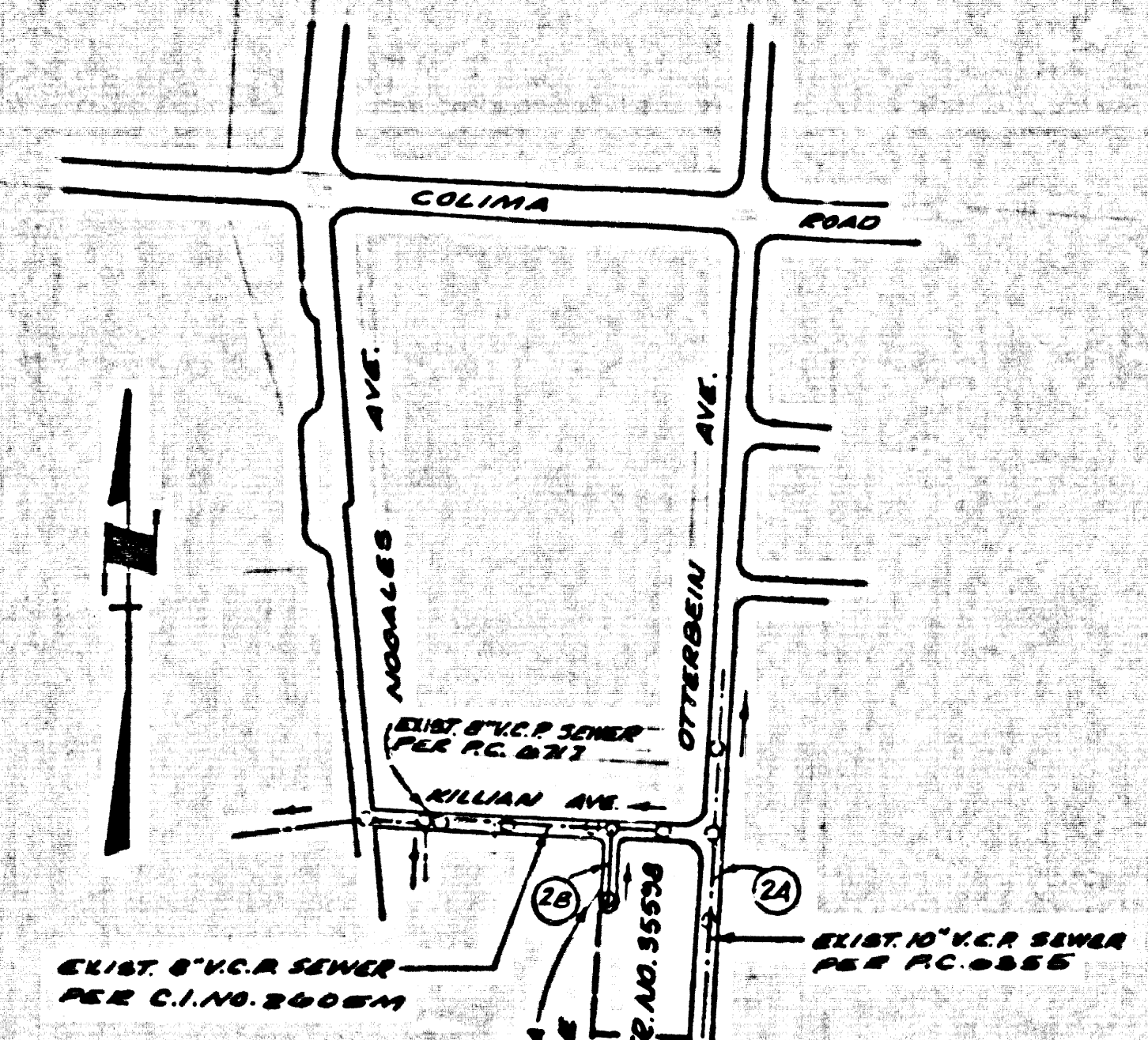
- CONSTRUCTION NOTES:**
1. WORK SHALL BE CONSTRUCTED ACCORDING TO THE STANDARD SPECIFICATIONS FOR PUBLIC WORKS CONSTRUCTION (1978 EDITION) AND COUNTY ENGINEER SPECIAL PROVISIONS FOR THE CONSTRUCTION OF SANITARY SEWERS DATED SEPTEMBER, 1968. ALL CHANGES SHALL BE INDICATED ONLY IN THE PRESENCE OF THE COUNTY ENGINEER.
 2. THE CONTRACTOR SHALL NOTIFY THE SANITATION DISTRICT OFFICE AT LEAST TWENTY-FOUR HOURS BEFORE STARTING ANY WORK UNDER THIS CONTRACT.
 3. HOUSE LATERALS TO BE CONSTRUCTED WITHIN PROPERTY AT PROPERTY LINE 4 FEET BELOW CURB GRADE EXCEPT AS NOTED.
 4. WYS OR THE BRANCHES MAY BE USED FOR CONNECTIONS TO MANHOLES EXCEPT AS NOTED.
 5. ALL STRUCTURES SHALL BE EITHER BRICK MANHOLES PER S-3 OR PRECAST CONCRETE MANHOLES PER S-24, EXCEPT AS NOTED.
 6. PROVIDE STAKES ON THE PROPERTY LINE OR PROPERTY LINE PRODUCE AT RIGHT ANGLES TO THE SEWER LINE AT THE CENTER LINE OF EACH MANHOLE.
 7. MANHOLE TOPS IN UNIMPROVED RIGHTS OF WAY TO BE SIX INCHES ABOVE FINISHED GRADE.
 8. VITRIFIED CLAY PIPE JOINTS SHALL BE TYPE "B", "C", OR "D" PER STANDARD SPECIFICATIONS SECTION 280-2.
 9. IF A POWER POLE IS WITHIN THREE FEET OF THE SEWER, THE SEWER SHALL BE ENCASED, PER S-25, CASE II, TWO FEET ON EACH SIDE FROM THE POINT OF INTERFERENCE.
 10. IF DURING THE COURSE OF CONSTRUCTION IT IS DETERMINED THAT THERE IS LESS THAN FOUR FEET OF COVER OVER THE TOP OF A MAIN LINE OR HOUSE LATERAL V.C.P. SEWER WHICH IS NOT INDICATED ON THE PLANS, THE PIPE SHALL BE ENCASED PER S-25, CASE II UNLESS OTHERWISE APPROVED BY THE COUNTY ENGINEER.
 11. ALL JOINTS BETWEEN CAST IRON PIPE AND VITRIFIED CLAY PIPE SHALL BE MADE WITH A RUBBER SLEEVE JOINT, TYPE "C" OR "D", FIFTH EDITION IF NECESSARY PER STANDARD SPECIFICATIONS, SECTION 280-2.
 12. SEWERS TO BE TESTED FOR LEAKAGE PER SECTION 280-4.9 OF THE STANDARD SPECIFICATIONS AND SPECIAL PROVISIONS.
 13. INSURE THAT ALL TRENCHES WITHIN PAVED AREAS TO MEET L.A. COUNTY ROAD DEPT. OR CALIFORNIA STATE HIGHWAY REQUIREMENTS IN ACCORDANCE WITH PERMITS.
 14. FULL COMPLIANCE WITH SECTION 280-1.8 OF THE SPECIAL PROVISIONS WILL BE REQUIRED FOR BACKFILL BY STREETS. CERTIFICATION OF BACKFILL COMPLETION AND SAME EQUIVALENTS BY A QUALIFIED, REGISTERED TESTING LABORATORY SHALL BE PROVIDED BY THE PERMITTEE PRIOR TO THE RECEIPT OF A CERTIFICATE OF PARTIAL ACCEPTANCE.

THE FOLLOWING LATEST REVISED STANDARD PLANS ON FILE IN THE OFFICE OF THE COUNTY ENGINEER SHALL APPLY IN THE CONSTRUCTION OF THIS PROJECT:

SEWER	S-1
MANHOLE FRAME SAFETY ENCLOSURE	S-2
BRICK MANHOLE	S-3
STANDARD MANHOLE STEP	S-17
BRICKS FOR SEWER PIPE	S-27
CHIMNEY AND ENCLOSURE	S-28
WYS OR THE SUPPORT	S-29
ALLOWABLE TRENCH WIDTHS	S-30
SEWER MANHOLE FRAME AND COVER	S-31
NON-IMPROVED PRECAST CONCRETE MANHOLE	S-32
SPECIAL SUPPORT AND PROTECTION	S-33

COUNTY OF LOS ANGELES, CALIFORNIA
 STEPHEN L. KROOK, COUNTY ENGINEER WALTER E. GARRISON, CHIEF ENGINEER
 COL. SAN. DIST. NO. 31
 APPROVED *Samuel Miller* 11/2/79 APPROVED *Frank R. ...* 12/2/79
 SAM DIMAS REGIONAL ENGINEER DATE OFFICE ENGINEER
 CHECKED *Ralph David ...* 11/24/79
 DATE
 REG. C. E. NO. 16893
 LA PUENTE BLDG. DIST. 3.00

B.M. CG 1287 ELEV. 527.17
 L+BY TOP 24" STAND PIPE @ N.W. COR. KILLIAN AVE & OTTERBEIN AVE.
 28' N. 1 1/2" W. OF 4" INT.
 OTTERBEIN QUAD. 19.25

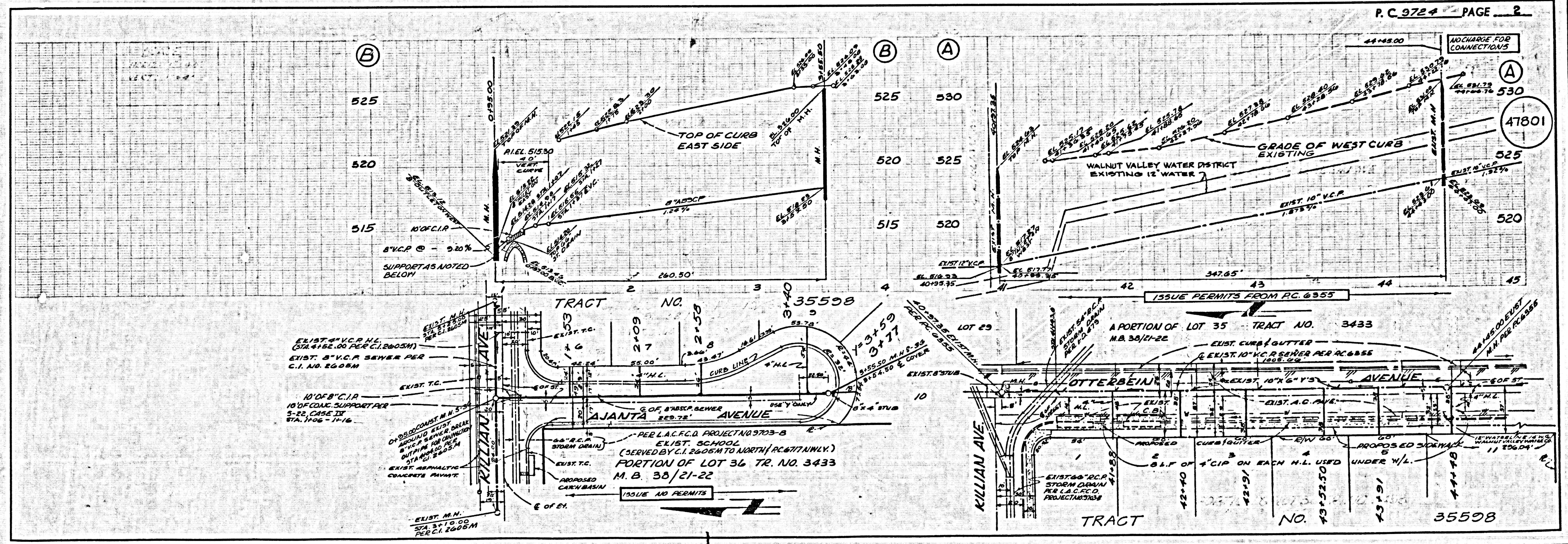


INDEX MAP
 SCALE: 1"=600'
 P.C. 9724

NO CONNECTION FOR THE DISPOSAL OF INDUSTRIAL WASTES SHALL BE MADE TO SEWERS SHOWN ON THESE DRAWINGS UNLESS A PERMIT FOR INDUSTRIAL WASTE WATER DISCHARGE HAS BEEN ISSUED BY THE SANITATION DISTRICTS FOR SAID CONNECTION.

BEFORE BREAKING INTO OR CONSTRUCTION ON A COUNTY SANITATION DISTRICT SEWER AND PRIOR TO FINAL ACCEPTANCE OF THE PROJECT SANITATION DISTRICT INSPECTOR SHALL BE NOTIFIED BY PHONE 902-3000, SO THAT REQUIRED INSPECTION CAN BE MADE.

NOTE:
 NO. IN CIRCLE REFERS TO PAGE NUMBER



PAGE 1

PAGE 2

H V MB

SH 15"