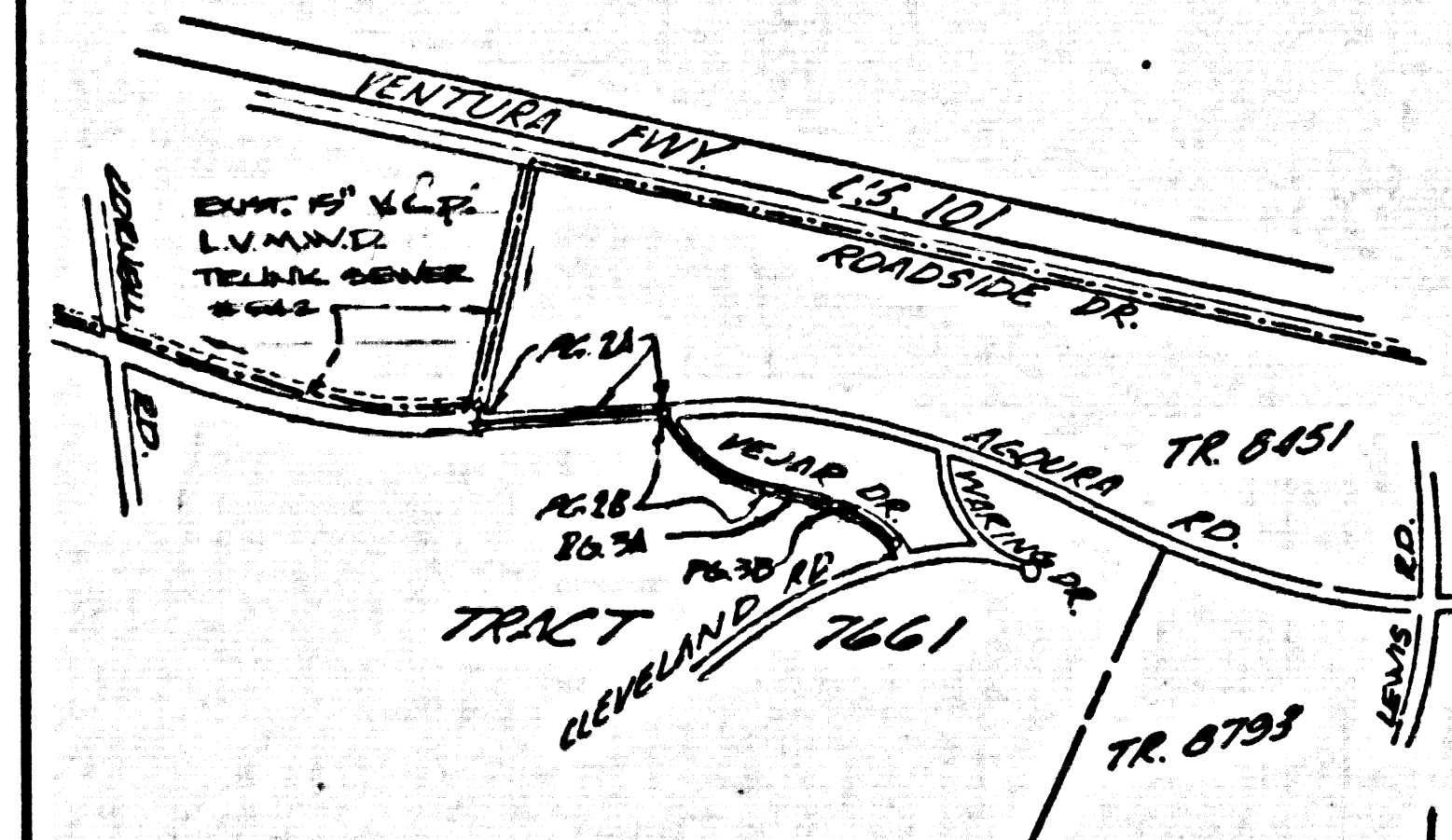


B.M. CY9050 ELEV. 878.18
 L + BAL IN CB. 3 FT. N. BCR 83 FT. N. 4
 24 FT. E. & INT. AGOURA RD. &
 LEWIS RD. MKR MF-15
 NALBU QUAD. 19.7E

DOUBLE SCALE



P.C. 9726
 INDEX MAP
 SCALE 1" = 600'

NOTE: FIGURES IN CIRCLE INDICATE PAGE NUMBERS

GENERAL NOTES:

- ELEVATIONS ARE IN FEET ABOVE U.S.C. & G.S. SEA LEVEL DATUM OF 1929.
- NO REVISIONS SHALL BE MADE IN THESE PLANS WITHOUT THE APPROVAL OF THE COUNTY ENGINEER.
- NO REPRESENTATIVE OF THE COUNTY ENGINEER WILL BE PRESENT AT ANY PORTION OF THE WORK.
- GRADES TO WHICH THE IMPROVEMENTS ARE TO BE CONSTRUCTED ARE SHOWN ON PLANS AND HOUSES. GRADE POINTS FOR TOP OF CURBS, CENTER LINE OF STREETS, OR CENTER LINE OF ALLEYS ARE SHOWN BY CIRCLES ON PROFILES. AT ALL POINTS BETWEEN INDICATED POINTS THE GRADE SHALL BE ESTABLISHED SO AS TO CONFORM TO A STRAIGHT LINE DRAWN BETWEEN SAID DESIGNATED POINTS.
- THE PRIVATE ENGINEER SHALL FURNISH THE COUNTY ENGINEER WITH GRADE SHEETS AND STATIONING FOR ALL HOUSE LATERALS AND "Y" OR "T" BRANCHES AND SHALL PROVIDE STAKES FOR THEM AT THEIR PROPER LOCATIONS WITH STATIONING PLAINLY MARKED. ALL HOUSE LATERALS SHALL BE CONSTRUCTED IN A STRAIGHT ALIGNMENT AT RIGHT ANGLES FROM THE MAIN LINE SEWER EXCEPT AS SHOWN ON THE PLANS. HOUSE LATERALS FROM CHIMNEYS SHALL NOT HAVE AN ANGLE OF LESS THAN 45° WITH THE MAIN LINE SEWER. ANY CHANGE IN ALIGNMENT SHALL BE REQUESTED IN WRITING BY THE PRIVATE ENGINEER.
- THE PRIVATE ENGINEER SHALL FURNISH THE HOUSE LATERAL DEPTH AT THE PROPERTY LINE BELOW THE TOP OF CURB ELEVATION FOR EACH HOUSE LATERAL ON THE GRADE SHEET.
- BEFORE WORK CAN BE STARTED, THE CONTRACTOR MUST OBTAIN A PERMIT TO EXCAVATE IN COUNTY STREETS FROM THE L.A. COUNTY ROAD DEPT., DISTRICT OFFICE NO. 3, AND PAY A FEE TO THE COUNTY ENGINEER, 5% OF THE CONTRACT VALUE.
- IF WORK IS TO BE DONE IN A STATE HIGHWAY, A PERMIT MUST BE OBTAINED FROM THE STATE OF CALIFORNIA, DIVISION OF HIGHWAYS, 128 SOUTH SPRING STREET, LOS ANGELES, CALIFORNIA.
- APPROVAL OF THIS PLAN BY THE COUNTY OF LOS ANGELES DOES NOT CONSTITUTE A REPRESENTATION AS TO THE ACCURACY OF THE LOCATION OF THE EXISTENCE OR NON-EXISTENCE OF ANY UNDERGROUND UTILITY PIPE, OR STRUCTURE WITHIN THE LIMITS OF THIS PROJECT. THIS NOTE APPLIES TO ALL PAGES.
- REFER TO SECTION 211.41 OF THE STANDARD SPECIFICATIONS, REGARDING SAFETY DEVICES.
- PRIOR TO THE ISSUANCE OF THE REQUIRED SEWER CONSTRUCTION PERMIT, THE CONTRACTOR SHALL OBTAIN AND FILE WITH THE COUNTY ENGINEER, COPIES OF A PERMIT TO EXCAVATE IN COUNTY STREETS FROM THE LOS ANGELES COUNTY ROAD DEPARTMENT. A PERMIT FOR EXCAVATION AND TRENCHES FROM THE STATE OF CALIFORNIA, DIVISION OF INDUSTRIAL SAFETY AND A CERTIFICATE OF WORKERS COMPENSATION INSURANCE WITH THE DEPARTMENT OF INDUSTRY ENGINEERS, 770 SOUTH VERMONT, LOS ANGELES, CALIFORNIA 90001, NAMED AS THE CERTIFICATE HOLDER, TO BE NOTIFIED 30 DAYS PRIOR TO COMMENCEMENT OF WORK.

CONSTRUCTION NOTES:

- WORK SHALL BE CONSTRUCTED ACCORDING TO THE STANDARD SPECIFICATIONS FOR PUBLIC WORKS CONSTRUCTION (1973 EDITION) WITH 1980 SUPPLEMENTS AND COUNTY ENGINEER SPECIAL PROVISIONS FOR THE CONSTRUCTION OF SANITARY SEWERS DATED 12/27/80, AND SHALL BE PROCEEDED ONLY IN THE PRESENCE OF THE COUNTY ENGINEER.
- THE CONTRACTOR SHALL NOTIFY THE CONSTRUCTION DIVISION BY TELEPHONE, (213) 926-4148, AT LEAST TWENTY-FOUR HOURS BEFORE STARTING ANY WORK UNDER THIS CONTRACT.
- HOUSE LATERALS TO BE CONSTRUCTED WITH INVERTS AT PROPERTY LINE 4 FEET BELOW CURB GRADE EXCEPT AS NOTED.
- USE OF THE BRANCHES MAY BE USED FOR CONNECTIONS TO ALIEN SEWERS EXCEPT AS NOTED.
- ALL STRUCTURES SHALL BE SET ON CONCRETE FOUNDATIONS PER L.A. OR PRECAST CONCRETE MANHOLES PER S-36, EXCEPT AS NOTED.
- HOUSE STAKES ON THE PROPERTY LINE OR PROPERTY LINES PROVIDED AT RIGHT ANGLES TO THE SEWER LINE AT THE CENTER LINE OF EACH MANHOLE.
- MANHOLES SHALL BE UNIMPROVED EXCEPT AS NOTED TO BE 24 INCHES ABOVE FINISHED GRADE.
- VERTICAL CLEARANCE SHALL BE 7' 0" TO 7' 6" FOR STANDARD SPECIFICATIONS SECTION 206-2.
- IF A POWER POLE IS WITHIN THREE FEET OF THE SEWER, THE SEWER SHALL BE ENCASED, PER S-28, CASE II, TWO FEET ON EACH SIDE FROM THE POINT OF INTERFERENCE.
- IF DURING THE COURSE OF CONSTRUCTION IT IS DETERMINED THAT THERE IS LESS THAN FOUR FEET OF COVER OVER THE TOP OF A MAIN LINE OR HOUSE LATERAL 12" OR SMALLER WHICH IS NOT INDICATED ON THE PLANS, THE PIPE SHALL BE ENCASED PER S-28, CASE II UNLESS OTHERWISE APPROVED BY THE COUNTY ENGINEER.
- ALL JOINTS BETWEEN CLAY PIPE AND VITRIFIED CLAY PIPE SHALL BE MADE WITH A RUBBER GASKET JOINT, TYPE "C" OR "D", WITH GASKETS OF HEAVY DUTY PER STANDARD SPECIFICATIONS, SECTION 206-2.
- SEWERS TO BE TRENCH FOR SEWAGE PER SECTION 206-1.4 OF THE STANDARD SPECIFICATIONS AND SPECIAL PROVISIONS.
- RESURFACE ALL TRENCHES WITHIN PAVED AREAS TO MEET L.A. COUNTY ROAD DEPT. OR CALIFORNIA STATE HIGHWAY REQUIREMENTS IN ACCORDANCE WITH PERMITS.
- REAL COMPLIANCE WITH SECTION 206-1.4 OF THE SPECIAL PROVISIONS WILL BE REQUIRED FOR BACKFILL IN STREETS. CERTIFICATION OF BACKFILL COMPACTION AND SAND EQUIVALENTS BY A QUALIFIED, REGISTERED TESTING LABORATORY SHALL BE PROVIDED BY THE PERMITTEE PRIOR TO THE ISSUANCE OF A CERTIFICATE OF PARTIAL ACCEPTANCE.

PROFILE, ALIGNMENT AND GRADE OF
SANITARY SEWERS PAGE 1
 TO BE CONSTRUCTED IN
VEJAR DRIVE
PRIVATE CONTRACT NO. 9726

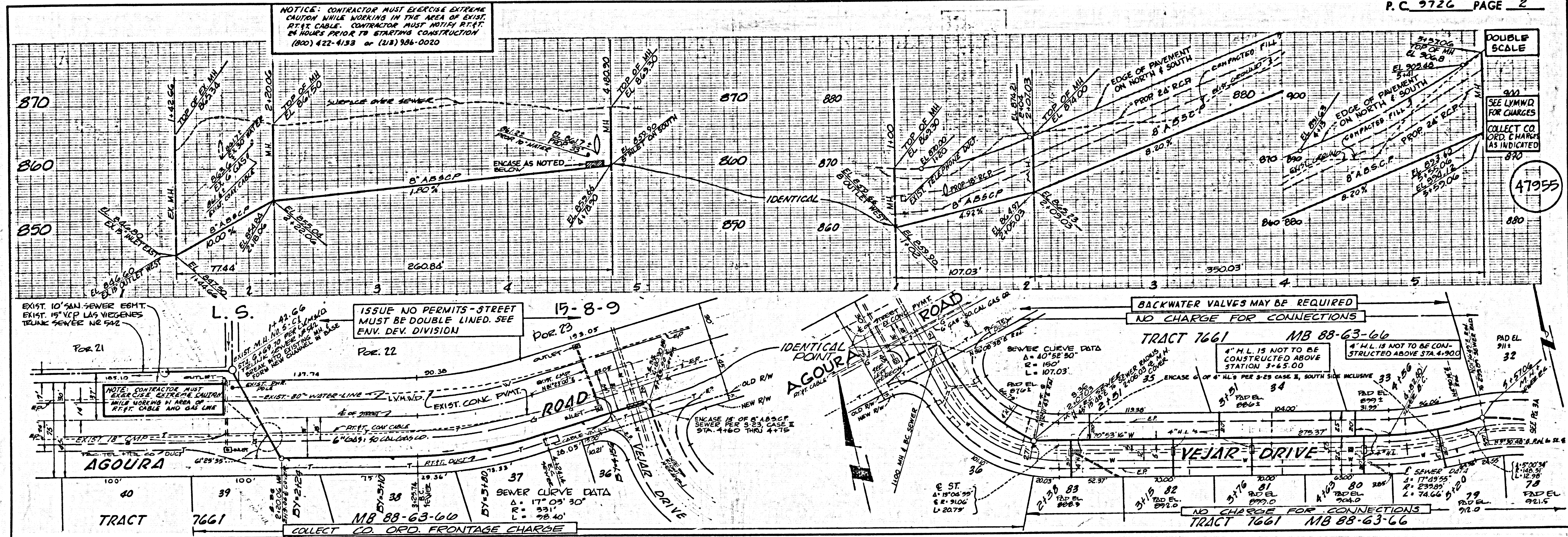
W.S. 162-077
 2 SHEETS, 3 PAGES
 SCALE: VERT. 1" = 4'
 HORIZ. 1" = 40'
 AUGUST, 1979
 PREPARED IN THE OFFICES OF
 C.C. & R. INC.
 2700 TOWNSEND RD. SUITE 207
 WESTLAKE, CA. 91061
 BY: *W. J. Koonce*
 REG. C. E. No. 14951

47954

THE FOLLOWING LATEST EDITION STANDARD PLANS ON FILE IN THE OFFICE OF THE COUNTY ENGINEER SHALL APPLY IN THE CONSTRUCTION OF THIS PROJECT:

STANDARD PUBLIC SAFETY REQUIREMENTS	S-2
SEWER MANHOLES	S-3
STANDARD MANHOLES PER	S-37
SEWERS FOR SEWER PIPE	S-38
CHASING AND ENCASING	S-28
PIPE ON THE SURFACE	S-29
ALUMINUM TRENCH SYSTEMS	S-30
LOCKING MANHOLES FRAME AND COVER	S-35
NON-REINFORCED PRECAST CONCRETE MANHOLES	S-36
EROSION PROTECTION	S-34

COUNTY OF LOS ANGELES, CALIFORNIA
 L.A.S. VIGIENES MUNICIPAL WATER DISTRICT
 STEPHEN J. KOONCE, COUNTY ENGINEER
 APPROVED: *W. J. Koonce* 8/6/79 DATE
 APPROVED: *W. J. Koonce* 8/6/79 DATE
 CHECKED: *R. D. Smith* 8/6/79 DATE
 REG. C.E. NO. 14951
 CALABAZAS BLDG. DIST. 910



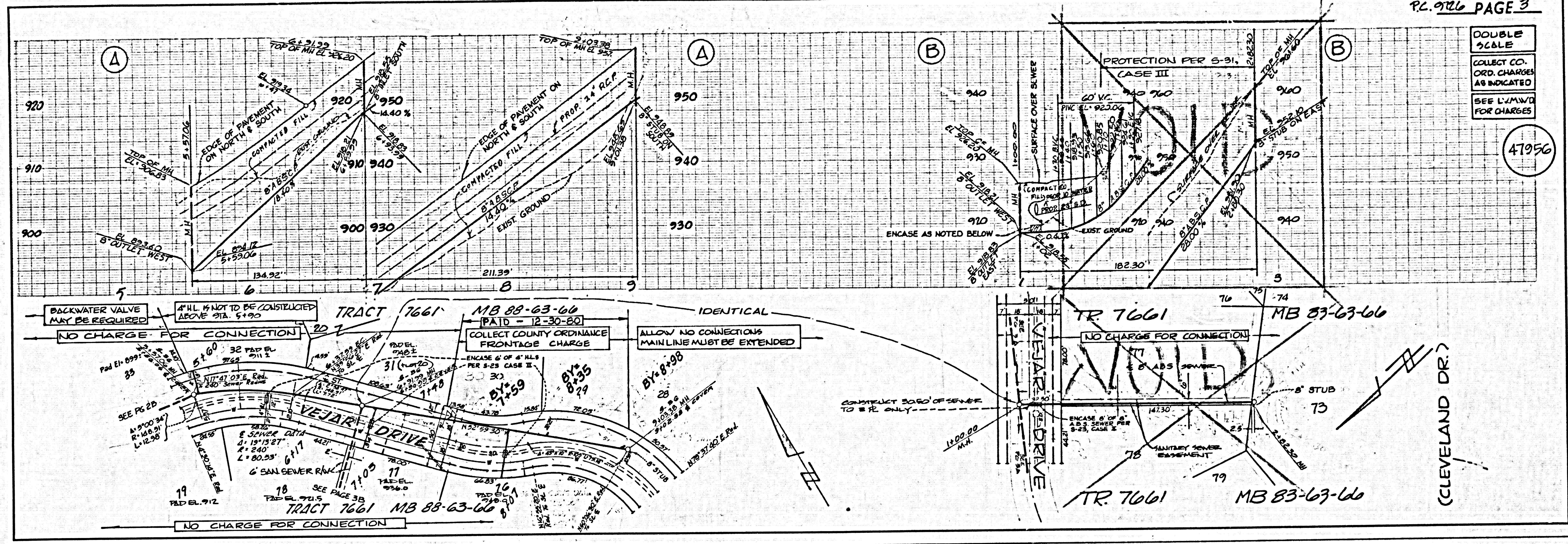
NOTICE: CONTRACTOR MUST EXERCISE EXTREME CAUTION WHILE WORKING IN THE AREA OF EXIST. RT'S CABLE. CONTRACTOR MUST NOTIFY RT'S 24 HOURS PRIOR TO STARTING CONSTRUCTION (800) 422-4133 or (213) 926-0020

ISSUE NO PERMITS - STREET MUST BE DOUBLE LINED. SEE ENV. DEV. DIVISION

BACKWATER VALVES MAY BE REQUIRED
 NO CHARGE FOR CONNECTIONS

TRACT 7661 MB 88-63-66
 4" H.L. IS NOT TO BE CONSTRUCTED ABOVE STATION 3+45.00

NO CHARGE FOR CONNECTIONS
 TRACT 7661 MB 88-63-66



DOUBLE
SCALE
COLLECT CO.
ORD. CHARGES
AS INDICATED
SEE L/M/W/D
FOR CHARGES

41956

3570.29

— PAGE —