

TO BE CONSTRUCTED IN
 PARCEL MAP NO. 11687
 PARCEL MAP NO. 11688
PRIVATE CONTRACT NO. 9727

W.S. 90
 2 SHEETS, 3 PAGES
 SCALE: VERT. 1" = 8'
 HORIZ. 1" = 40' JULY 23, 1979
 PREPARED IN THE OFFICES OF
 SIKAND ENGINEERING ASSOCIATES
 18330 BURBANK BLVD., VAN NUYS,
 CALIFORNIA - 91411
 BY: *Ronald R. Han*
 REG. C. E. No. 16913

47857

- GENERAL NOTES:**
- ELEVATIONS ARE IN FEET ABOVE U.S.C. & G.S. SEA LEVEL DATUM OF 1929.
 - NO REVISIONS SHALL BE MADE IN THESE PLANS WITHOUT THE APPROVAL OF THE COUNTY ENGINEER.
 - NO REPRESENTATIVE OF THE COUNTY ENGINEER WILL SURVEY OR LAY OUT ANY PORTION OF THE WORK.
 - GRADES TO WHICH THIS IMPROVEMENT IS TO BE CONSTRUCTED ARE SHOWN ON PLANS AND PROFILE. GRADE POINTS FOR TOP OF CURBS, CENTER LINES OF STREETS, OR CENTER LINE OF ALLEYS ARE SHOWN BY CIRCLES ON PROFILES. AT ALL POINTS BETWEEN DESIGNATED POINTS THE GRADE SHALL BE ESTABLISHED SO AS TO CONFORM TO A STRAIGHT LINE DRAWN BETWEEN SAID DESIGNATED POINTS.
 - THE PRIVATE ENGINEER SHALL FURNISH THE COUNTY ENGINEER WITH GRADE SHEETS AND STATIONING FOR ALL HOUSE LATERALS AND "T" OR "Y" BRANCHES AND SHALL PROVIDE STAKES FOR THEM AT THEIR PROPER LOCATIONS WITH STATIONING PLAINLY MARKED. ALL HOUSE LATERALS SHALL BE CONSTRUCTED IN A STRAIGHT ALIGNMENT AT RIGHT ANGLES FROM THE MAIN LINE SEWER EXCEPT AS SHOWN ON THE PLANS. HOUSE LATERALS FROM CHIMNEYS SHALL NOT HAVE AN ANGLE OF LESS THAN 45° WITH THE MAIN LINE SEWER. ANY CHANGE IN ALIGNMENT SHALL BE REQUESTED IN WRITING BY THE PRIVATE ENGINEER.
 - THE PRIVATE ENGINEER SHALL FURNISH THE HOUSE LATERAL DEPTH AT THE PROPERTY LINE BELOW THE TOP OF CURB ELEVATION FOR EACH HOUSE LATERAL ON THE GRADE SHEET.
 - BEFORE WORK CAN BE STARTED, THE CONTRACTOR MUST OBTAIN A PERMIT TO EXCAVATE IN COUNTY STREETS FROM THE L.A. COUNTY ROAD DEPT., DISTRICT OFFICE NO. 3, AND PAY A FEE TO THE COUNTY ENGINEER, \$50. & VERMONT AVE., L.A. TO COVER THE COST OF CONSTRUCTION INSPECTION AND RECORD PLANS.
 - IF WORK IS TO BE DONE IN A STATE HIGHWAY, A PERMIT MUST BE OBTAINED FROM THE STATE OF CALIFORNIA, DIVISION OF HIGHWAYS, 120 SOUTH SPRING STREET, LOS ANGELES, CALIFORNIA.
 - APPROVAL OF THIS PLAN BY THE COUNTY OF LOS ANGELES DOES NOT CONSTITUTE A REPRESENTATION AS TO THE ACCURACY OF THE LOCATION OF OR THE EXISTENCE OR NON-EXISTENCE OF ANY UNDERGROUND UTILITY PIPE, OR STRUCTURE WITHIN THE LIMITS OF THIS PROJECT. THIS NOTE APPLIES TO ALL PAGES.
 - REFER TO SECTION 7.11.6.1 OF THE STANDARD SPECIFICATIONS, REGARDING SAFETY CODES.
 - PRIOR TO THE ISSUANCE OF THE REQUIRED SEWER CONSTRUCTION PERMIT, THE CONTRACTOR SHALL OBTAIN AND FILE WITH THE COUNTY ENGINEER COPIES OF A PERMIT TO EXCAVATE IN COUNTY STREETS FROM THE LOS ANGELES COUNTY ROAD DEPARTMENT, A PERMIT FOR EXCAVATIONS AND TRENCHES FROM THE STATE OF CALIFORNIA, DIVISION OF INDUSTRIAL SAFETY AND A CERTIFICATE OF WORKER'S COMPENSATION INSURANCE WITH THE DEPARTMENT OF COUNTY ENGINEERS, 625 SOUTH VERMONT, ROOM 608, LOS ANGELES, CALIFORNIA 90005, NAMED AS THE CERTIFICATE HOLDER TO BE NOTIFIED 30 DAYS PRIOR TO CANCELLATION OF POLICY.

- CONSTRUCTION NOTES:**
- WORK SHALL BE CONSTRUCTED ACCORDING TO THE STANDARD SPECIFICATIONS FOR PUBLIC WORKS CONSTRUCTION 1978 EDITION WITH SUPPLEMENTS AND COUNTY ENGINEER SPECIAL PROVISIONS FOR THE CONSTRUCTION OF SANITARY SEWERS DATED SEPTEMBER, 1978. THIS SHALL BE PROSECUTED ONLY IN THE PRESENCE OF THE COUNTY ENGINEER.
 - THE CONTRACTOR SHALL NOTIFY THE DISTRICT OFFICE BY TELEPHONE, 738-8156, AT LEAST TWENTY-FOUR HOURS BEFORE STARTING ANY WORK UNDER THIS CONTRACT.
 - HOUSE LATERALS TO BE CONSTRUCTED WITH INVERTS AT PROPERTY LINE & FEET BELOW CURB GRADE EXCEPT AS NOTED.
 - WRITE ON THE BRANCHES THAT BE USED FOR CONNECTIONS TO MAINLINE SEWERS EXCEPT AS NOTED.
 - ALL STRUCTURES SHALL BE EITHER BRICK MANHOLES PER S-34 OR PRECAST CONCRETE MANHOLES PER S-35, EXCEPT AS NOTED.
 - PROVIDE STAKES ON THE PROPERTY LINE OR PROPERTY LINES PRODUCED AT RIGHT ANGLES TO THE SEWER LINE AT THE CENTER LINE OF EACH MANHOLE.
 - MANHOLE TOPS IN UNIMPROVED AREAS OF WAY TO BE SIX INCHES ABOVE FINISHED GRADE.
 - VERTICAL CLAY PIPE JOINTS SHALL BE TYPE "P", "T", OR "U" PER STANDARD SPECIFICATIONS SECTION 306-2.
 - IF A POWER POLE IS WITHIN THREE FEET OF THE SEWER, THE SEWER SHALL BE ENCASED, PER S-33, CASE II, TWO FEET ON EACH SIDE FROM THE POINT OF INTERFERENCE.
 - IF DURING THE COURSE OF CONSTRUCTION IT IS DETERMINED THAT THERE IS LESS THAN FOUR FEET OF COVER OVER THE TOP OF A MAIN LINE OR HOUSE LATERAL "Y" SEWER WHICH IS NOT INDICATED ON THE PLANS, THE PIPE SHALL BE ENCASED PER S-33, CASE II UNLESS OTHERWISE APPROVED BY THE COUNTY ENGINEER.
 - ALL JOINTS BETWEEN CLAY PIPE AND VITRIFIED CLAY PIPE SHALL BE MADE WITH A RUBBER SLEEVE JOINT, TYPE "C" OR "D", WITH BUSHING IF NECESSARY PER STANDARD SPECIFICATIONS SECTION 306-2.
 - SEWERS TO BE TESTED FOR LEAKAGE PER SECTION 306-2.2.7 OF THE STANDARD SPECIFICATIONS AND SPECIAL PROVISIONS IN ACCORDANCE WITH PERMITS.
 - FIELD COMPLIANCE WITH SECTION 306-1.3 OF THE SPECIAL PROVISIONS WILL BE REQUIRED FOR BACKFILL IN STREETS. CERTIFICATION OF BACKFILL COMPACTION AND SAND EQUIVALENTS BY A QUALIFIED, REGISTERED TESTING LABORATORY SHALL BE PROVIDED BY THE PERMITTEE PRIOR TO THE ISSUANCE OF A CERTIFICATE OF PARTIAL ACCEPTANCE.

THE FOLLOWING LATEST REVISED STANDARD PLANS ON FILE IN THE OFFICE OF THE COUNTY ENGINEER SHALL APPLY IN THE CONSTRUCTION OF THIS PROJECT:

MINIMUM PUBLIC SAFETY REQUIREMENTS	S-3
BRICK MANHOLE	S-34
STANDARD MANHOLE STEP	S-37
REINFORCING FOR SEWER PIPE	S-38
CHANNELING AND INCAUSEMENT	S-39
WIRE OR THE SUPPORT	S-39
ALLOWABLE TRENCH WIDTHS	S-39
LOCATIONS MANHOLE PLANS AND COVER	S-39
HIGH-STRENGTH PRECAST CONCRETE MANHOLE	S-39
RECTANGULAR SHALLOW MANHOLE	S-39
RECTANGULAR MANHOLE FRAME OF COVERS	S-39

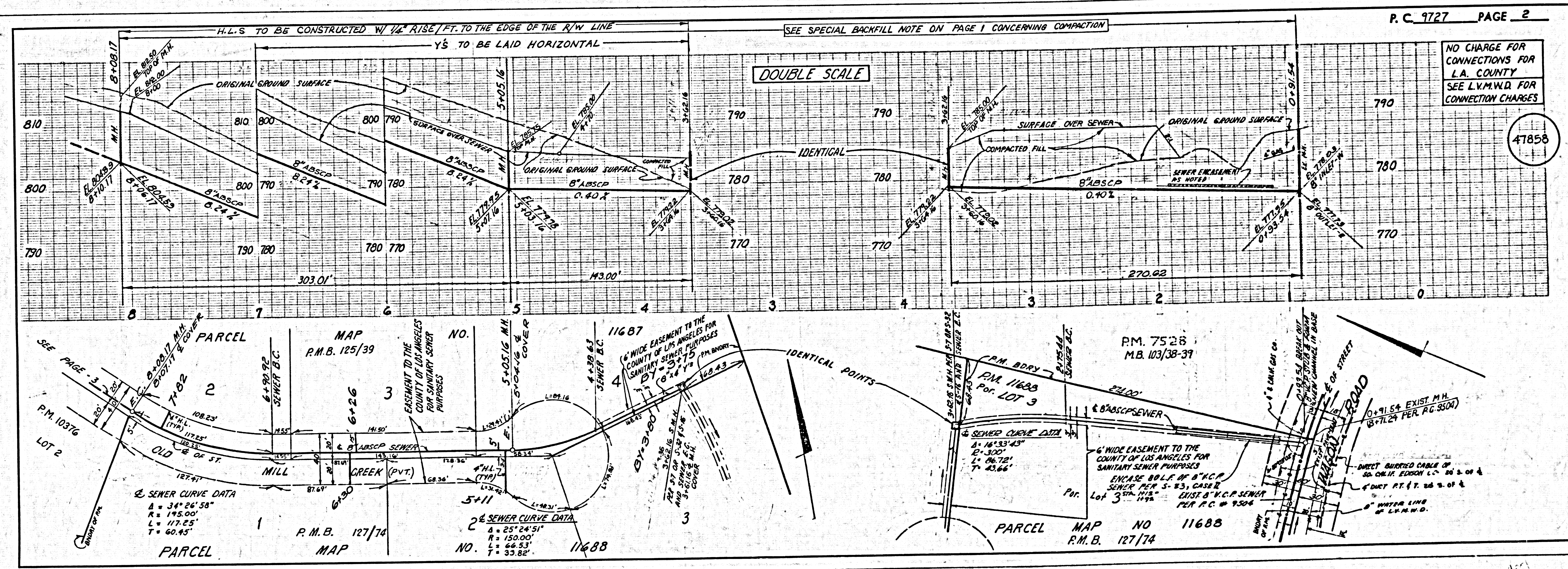
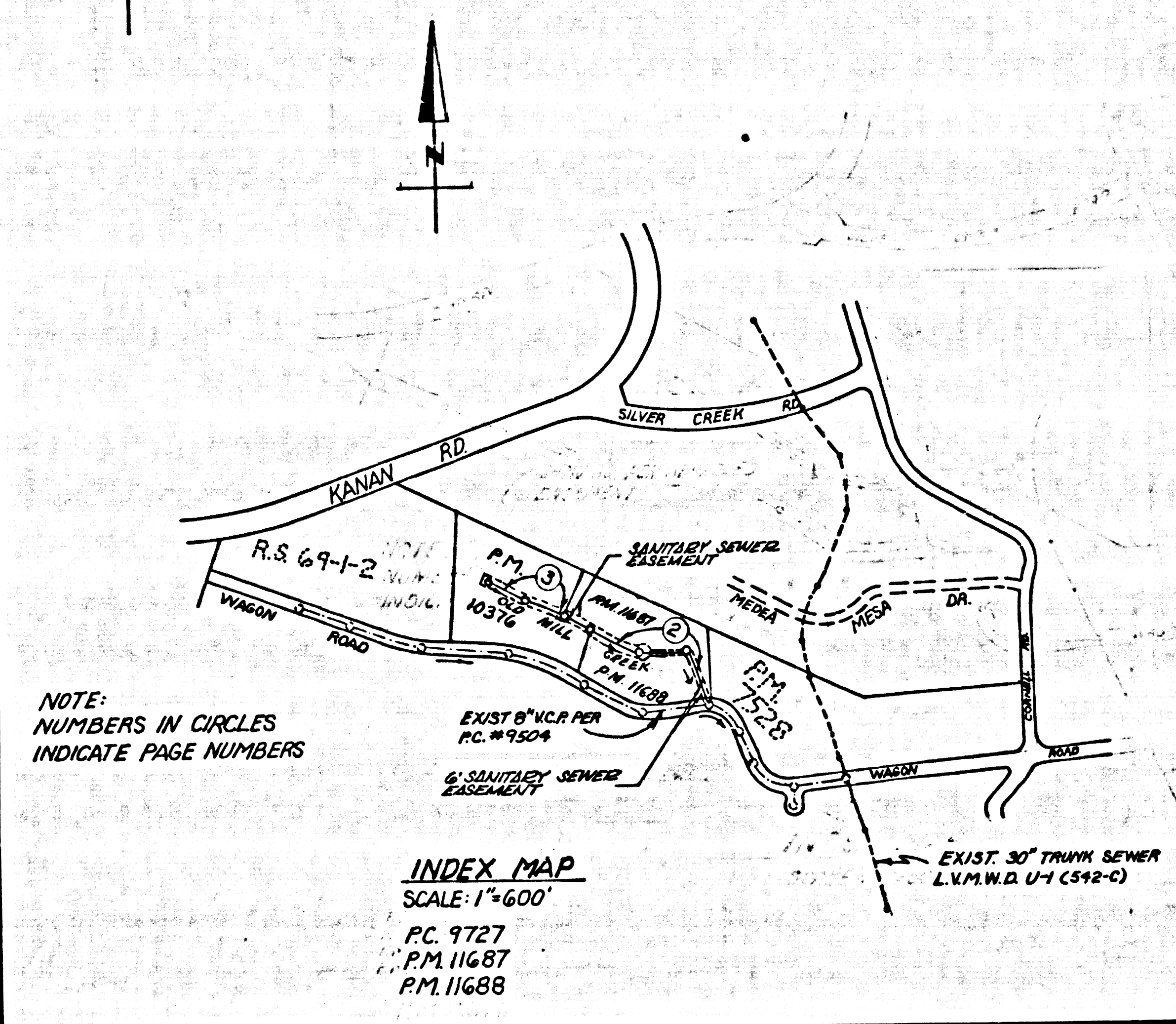
COUNTY OF LOS ANGELES, CALIFORNIA
 STEPHEN J. KADANCE, COUNTY ENGINEER LAS VIRGINES MUNICIPAL WATER DISTRICT
 APPROVED *Maxine L. Murphy* 3/18/80 DATE
 APPROVED *W. Stobles* GENERAL MANAGER
 CHECKED *Ralph Davis* 3/16/80 DATE
 M.O. C.E. NO. 16983
 CALABASAS BLDG. DIST. 31

B.M. 87-7603 ELEV. 806.416
 C.S.B.M. MON. 6" UP 20' EAST OF 1/4 CORNELL RD.
 1.0 MILE NORTH OF WOODLAND HWY. 15' S 10'
 P.C. # 807543-N M.D. 66-2 1963. E.T.P. 3'
 UP 2' WEST.
 MALIBU QUAD. 19-22

SPECIAL BACKFILL IN EASEMENT CONSTRUCTION.
 A. BACKFILL TRENCH AND REPLACE OTHER EARTH SO AS TO ACHIEVE THE NATURAL OR FINISHED GRADES AND SLOPES SHOWN ON THE GRADING PLAN APPROVED FOR THIS DEVELOPMENT BY THE BUILDING AND SAFETY DIVISION.
 B. ALL BACKFILL AND EARTH REPLACED SHALL BE COMPACTED TO A MINIMUM OF 90% OF MAXIMUM DENSITY PER ASTM STANDARD METHOD OF TEST D-998-57T AS MODIFIED. ACCEPTABLE CERTIFICATION OF SUCH COMPACTION SHALL BE SUBMITTED TO THE EXT. DEV. DIVISION.

REVISION NO. 2 DATE 3-27-85
 PAGE 3: EXTENDED HOUSE LATERALS TO STA. 9+27, 11+06, AND 12+96 TO FUTURE EASEMENT LINE
 APPROVED *Sally G. Ibal*

REVISION NO. 1 DATE 6/30/80
 ADDED 4" H.L.'S AND EXTENDED TO SEWER EASEMENT LINE IN LIEU OF 8"x4" Y'S
 ADDED M.H. PER S-36 AND RAISED TOP TO ELEVATION 785.00 AND STA. 3+62.16 IN LIEU OF 8" SHALLOW M.H.
 Dean Estabrook 25559
 OFFICE OF COUNTY ENGR. 7 R.E. NO.



NO CHARGE FOR CONNECTIONS FOR L.A. COUNTY SEE L.V.M.V.D. FOR CONNECTION CHARGES

47859

