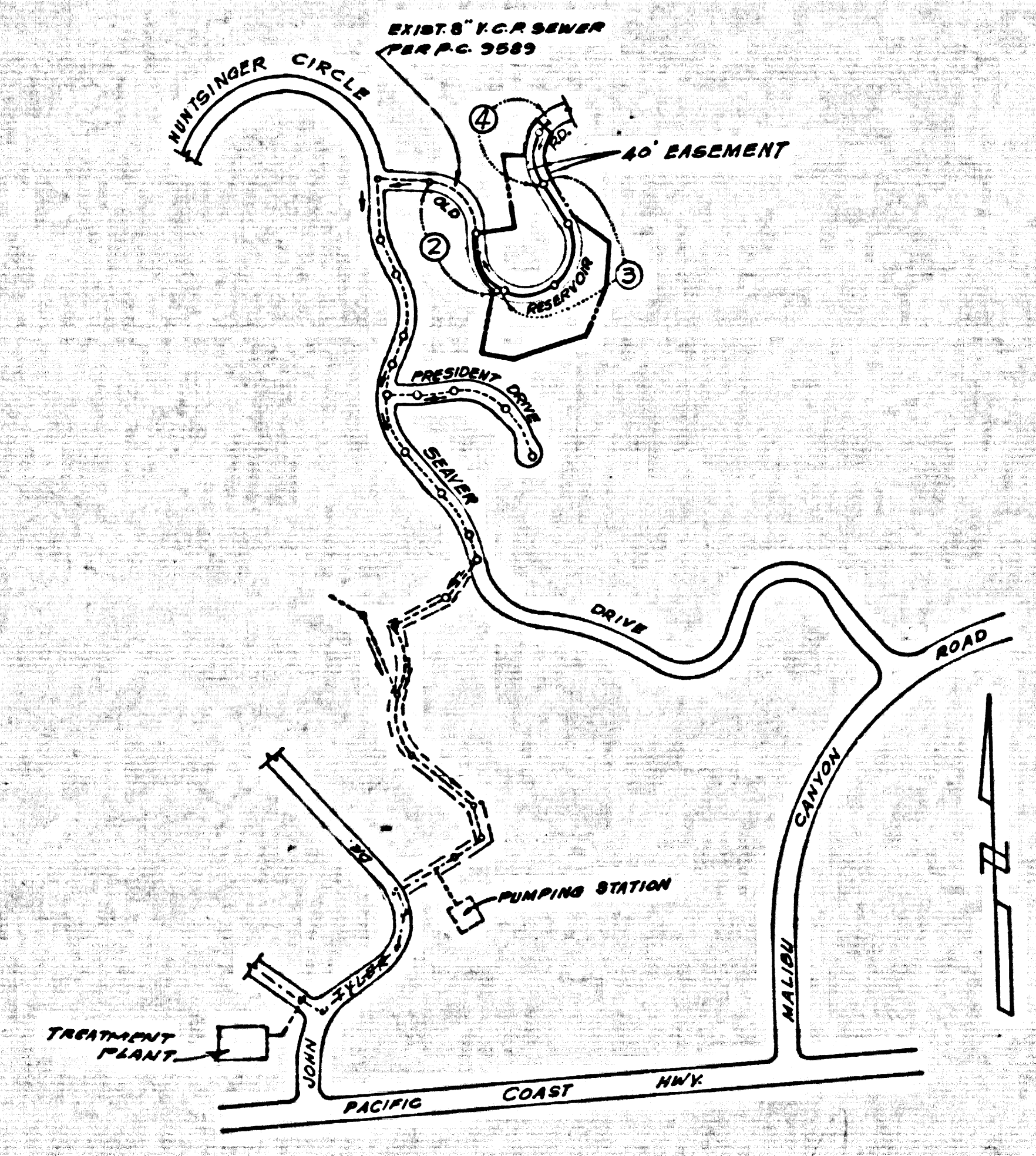


TO BE CONSTRUCTED IN
TRACT No. 37842
OLD RESERVOIR ROAD (FRIV. DRIVE)
(40' EASEMENT)

PRIVATE CONTRACT NO. 9728

W.S. 91
2 SHEETS, 4 PAGES (47805)
SCALE: HORIZ. 1"=40' VERT. 1"=8'
DATE: JUNE, 1979
PREPARED IN THE OFFICES OF
BECHTOL & EMERSON
825 W. COLORADO Blvd.
LOS ANGELES, CA, 90041, (213) 254-5134
BY: James T. Emerson
REG. C. E. No. 16531

B.M. 84-5399 ELEV 196.049
C&G MON. & W. ON CTR. DIVIDING STRIP PACIFIC
COAST HWY. 0.15 MI. N. MALIBU CYN.
RD. BETWEEN L & T'S 64 FT. S.W. RR.
NO. 1017674E MKD. SOLSTICE CYN.
L-8A 1950 QUAD. 1972



PC. 9728
INDEX MAP
SCALE 1"=600'

NOTE: ISSUE NO HOUSE CONNECTION PERMITS UNTIL TRACT 37842 HAS RECORDED

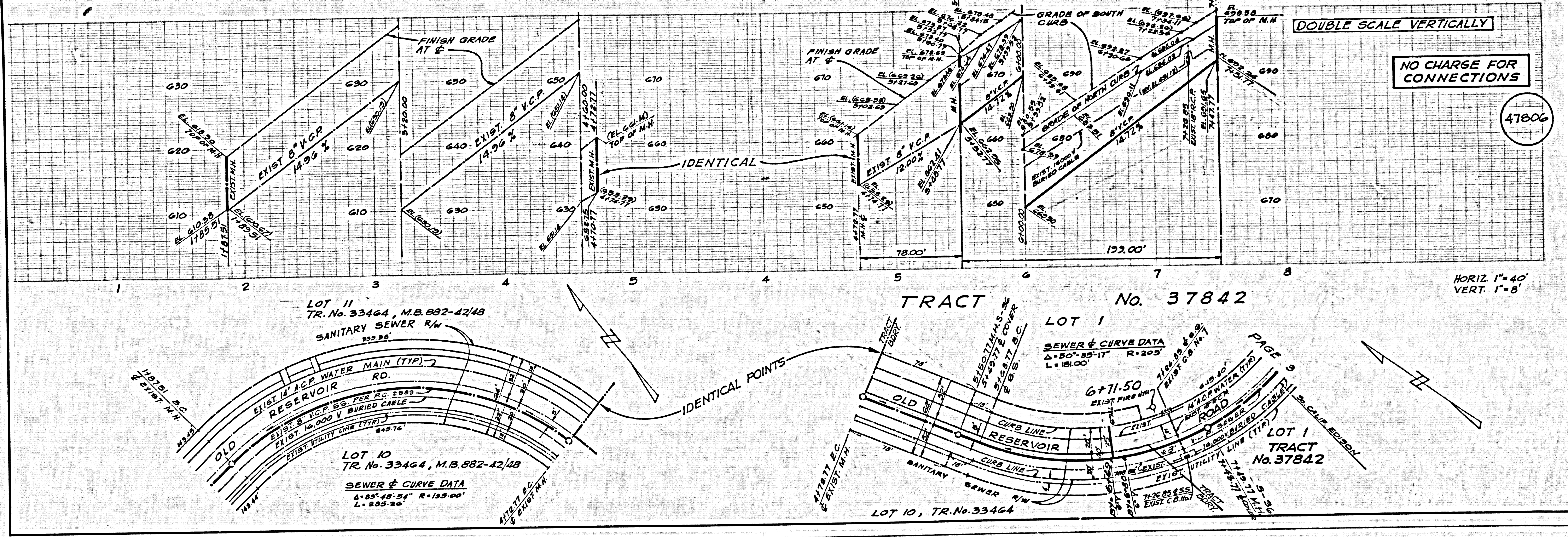
- GENERAL NOTES:**
- ELEVATIONS ARE IN FEET ABOVE U.S.C. & G.S. SEA LEVEL DATUM OF 1929.
 - NO REVISIONS SHALL BE MADE IN THESE PLANS WITHOUT THE APPROVAL OF THE COUNTY ENGINEER.
 - NO REPRESENTATIVE OF THE COUNTY ENGINEER WILL SURVEY OR LAY OUT ANY PORTION OF THE WORK.
 - GRADES TO WHICH THIS IMPROVEMENT IS TO BE CONSTRUCTED ARE SHOWN ON PLANS AND PROFILES. GRADE POINTS FOR TOP OF CURBS, CENTER LINE OF STREETS, OR CENTER LINE OF ALLEYS ARE SHOWN BY CIRCLES ON PROFILES. AT ALL POINTS BETWEEN DESIGNATED POINTS THE GRADE SHALL BE ESTABLISHED SO AS TO CONFORM TO A STRAIGHT LINE DRAWN BETWEEN SAID DESIGNATED POINTS.
 - THE PRIVATE ENGINEER SHALL FURNISH THE COUNTY ENGINEER WITH GRADE SHEETS AND STATIONING FOR ALL HOUSE LATERALS AND "T" OR "Y" BRANCHES AND SHALL PROVIDE STAKES FOR THEM AT THEIR PROPER LOCATIONS WITH STATIONING PLAINLY MARKED. ALL HOUSE LATERALS SHALL BE CONSTRUCTED IN A STRAIGHT ALIGNMENT AT RIGHT ANGLES FROM THE MAIN LINE SEWER EXCEPT AS SHOWN ON THE PLANS. HOUSE LATERALS FROM CONCRETE SHALL NOT HAVE AN ANGLE OF LESS THAN 45° WITH THE MAIN LINE SEWER. ANY CHANGE IN ALIGNMENT SHALL BE INDICATED BY THE PRIVATE ENGINEER.
 - THE PRIVATE ENGINEER SHALL FURNISH THE HOUSE LATERAL DEPTH AT THE PROPERTY LINE BELOW THE TOP OF CURB ELEVATION FOR EACH HOUSE LATERAL ON THE GRADE SHEET.
 - IF WORK CAN BE STARTED, THE CONTRACTOR MUST SUBMIT TO THE COUNTY ENGINEER A PROPOSED SCHEDULE OF WORK AND PAY A FEE TO THE COUNTY ENGINEER, 500 B. VERMONT BLVD., Rm. 406, LOS ANGELES, CALIF. TO COVER THE COST OF CONSTRUCTION INSPECTION AND RECORD PLANS.
 - IF WORK IS TO BE DONE ON A STATE HIGHWAY, A PERMIT MUST BE OBTAINED FROM THE STATE OF CALIFORNIA, DIVISION OF HIGHWAYS, 138 SOUTH SPRING STREET, LOS ANGELES, CALIFORNIA.
 - APPROVAL OF THIS PLAN BY THE COUNTY OF LOS ANGELES DOES NOT CONSTITUTE A REPRESENTATION AS TO THE ACCURACY OF THE LOCATION OF OR THE EXISTENCE OR NON-EXISTENCE OF ANY UNDERGROUND UTILITY PIPE, OR STRUCTURE WITHIN THE LIMITS OF THIS PROJECT. THIS NOTE APPLIES TO ALL PAGES.
 - REFER TO SECTION 7.18.6.1 OF THE STANDARD SPECIFICATIONS, REGARDING SAFETY CHANGES.
 - BEFORE THE REQUIRED SEWER CONSTRUCTION PERMIT BY THE COUNTY ENGINEER, THE CONTRACTOR SHALL OBTAIN A PERMIT TO EXCAVATE FROM THE STATE OF CALIFORNIA, DIVISION OF INDUSTRIAL SAFETY AND FILE A CERTIFICATE OF WORKMAN'S COMPENSATION AND LIABILITY INSURANCE WITH THE COUNTY ENGINEER.

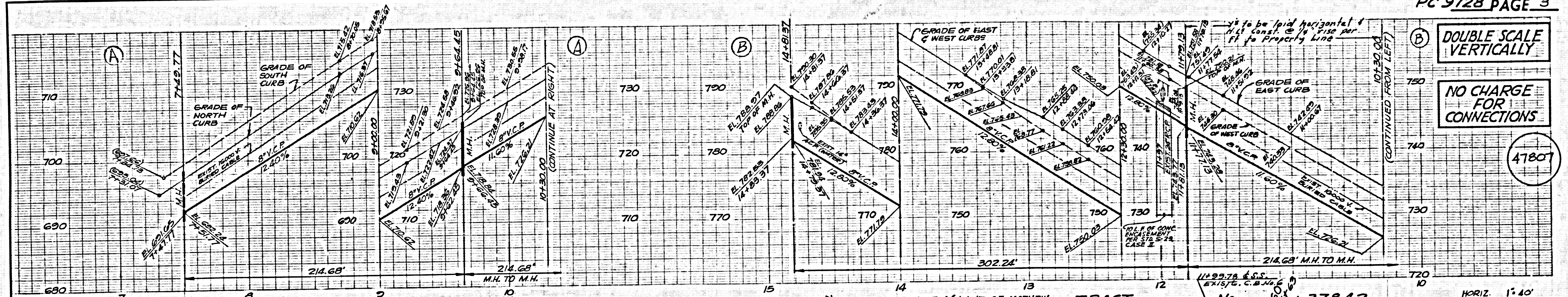
- CONSTRUCTION NOTES:**
- WORK SHALL BE CONSTRUCTED ACCORDING TO THE STANDARD SPECIFICATIONS FOR PUBLIC WORKS CONSTRUCTION (1978 EDITION) WITH SECTION 2.12.3 SUPPLEMENTARY AND COUNTY ENGINEER SPECIAL PROVISIONS FOR THE CONSTRUCTION OF SANITARY SEWERS SET 2.12.3.2 AND SHALL BE PROSECUTED ONLY IN THE PRESENCE OF THE COUNTY ENGINEER.
 - THE CONTRACTOR SHALL NOTIFY THE CONSTRUCTION DIV. BY TELEPHONE 748-2956, AT LEAST TWENTY-FOUR HOURS BEFORE STARTING ANY WORK UNDER THIS CONTRACT.
 - HOUSE LATERALS TO BE CONSTRUCTED WITH INVERTS AT PROPERTY LINE & FEET BELOW CURB GRADE EXCEPT AS NOTED.
 - PIPE OR THE BRANCHES MAY BE USED FOR CONNECTIONS TO MAINLINE SEWERS EXCEPT AS NOTED.
 - ALL STRUCTURES SHALL BE EITHER BRICK MANHOLES PER S-3 OR PRECAST CONCRETE MANHOLES PER S-36, EXCEPT AS NOTED.
 - PROVIDE STAKES ON THE PROPERTY LINE OR PROPERTY LINES PRODUCED AT RIGHT ANGLES TO THE SEWER LINE AT THE CENTER LINE OF EACH MANHOLE.
 - MANHOLES FOR UNIMPROVED RIGHTS OF WAY TO BE SIX INCHES ABOVE FINISH GRADE.
 - VERTICAL CLAY PIPE JOINTS SHALL BE TYPE "B", "C", OR "D" PER STANDARD SPECIFICATIONS SECTION 386-2.
 - IF A POWER POLE IS WITHIN THREE FEET OF THE SEWER, THE SEWER SHALL BE ENCASED PER S-36, CLASS 2, TWO FEET ON EACH SIDE FROM THE POINT OF INTERFERENCE.
 - IF DURING THE COURSE OF CONSTRUCTION IT IS DETERMINED THAT THERE IS LESS THAN FOUR FEET OF COVER OVER THE TOP OF A MAIN LINE OR HOUSE LATERAL V.C.P. SEWER WHICH IS NOT INDICATED ON THE PLANS, THE PIPE SHALL BE ENCASED PER S-36, CLASS 2 UNLESS OTHERWISE APPROVED BY THE COUNTY ENGINEER.
 - ALL JOINTS BETWEEN CLAY PIPE AND VITRIFIED CLAY PIPE SHALL BE MADE WITH A RUBBER GASKET JOINT, TYPE "C" OR "D", WITH MESHING IF NECESSARY PER STANDARD SPECIFICATIONS, SECTION 386-2.
 - SEWERS TO BE TESTED FOR LEAKAGE PER SECTION 386-2.6 OF THE STANDARD SPECIFICATIONS AND SPECIAL PROVISIONS.
 - RESURFACE ALL TRENCHES WITHIN PAVED AREAS TO MEET L.A. COUNTY ROAD DEPT. OR CALIFORNIA STATE HIGHWAY REQUIREMENTS.
 - FULL COMPLIANCE WITH SECTION 386-1.8.6 OF THE SPECIAL PROVISIONS WILL BE REQUIRED FOR BACKFILL IN STREETS. CERTIFICATION OF BACKFILL CONSTRUCTION AND SAME EQUIVALENTS BY A QUALIFIED REGISTERED TESTING LABORATORY SHALL BE PROVIDED BY THE CONTRACTOR PRIOR TO THE ISSUANCE OF A CERTIFICATE OF PARTIAL ACCEPTANCE.
- NOTE: ISSUE NO HOUSE CONNECTION PERMITS UNTIL ALL SEWER R/W AND SEWERS BETWEEN TRACT 37842 AND THE TREATMENT PLANT ARE RECORDED AND DEDICATED TO L.A. COUNTY ENG.

THE FOLLOWING LATEST REVISED STANDARD PLANS ON FILE IN THE OFFICE OF THE COUNTY ENGINEER SHALL APPLY IN THE CONSTRUCTION OF THIS PROJECT:

SEWER	S-3
MINIMUM PUBLIC SAFETY REQUIREMENTS	S-3
BRICK MANHOLES	S-3
STANDARD MANHOLE STEP	S-37
BRIDGING FOR SEWER PIPE	S-37
CHASING AND ENCASING	S-36
PIPE OR THE SUPPORT	S-36
ADJUVANES FINISH WITHIN	S-37
LOCATING MANHOLES PLANS AND COVER	S-36
NON-REINFORCED PRECAST CONCRETE MANHOLES	S-36

COUNTY OF LOS ANGELES, CALIFORNIA
STEPHEN J. KOONCE, COUNTY ENGINEER
APPROVED: Aldon W. Keiser 12-7-79
CHECKED: Ralph Davis 12/7/79
REG. C. E. NO. 16531
MALIBU BLDG. DIST. 3

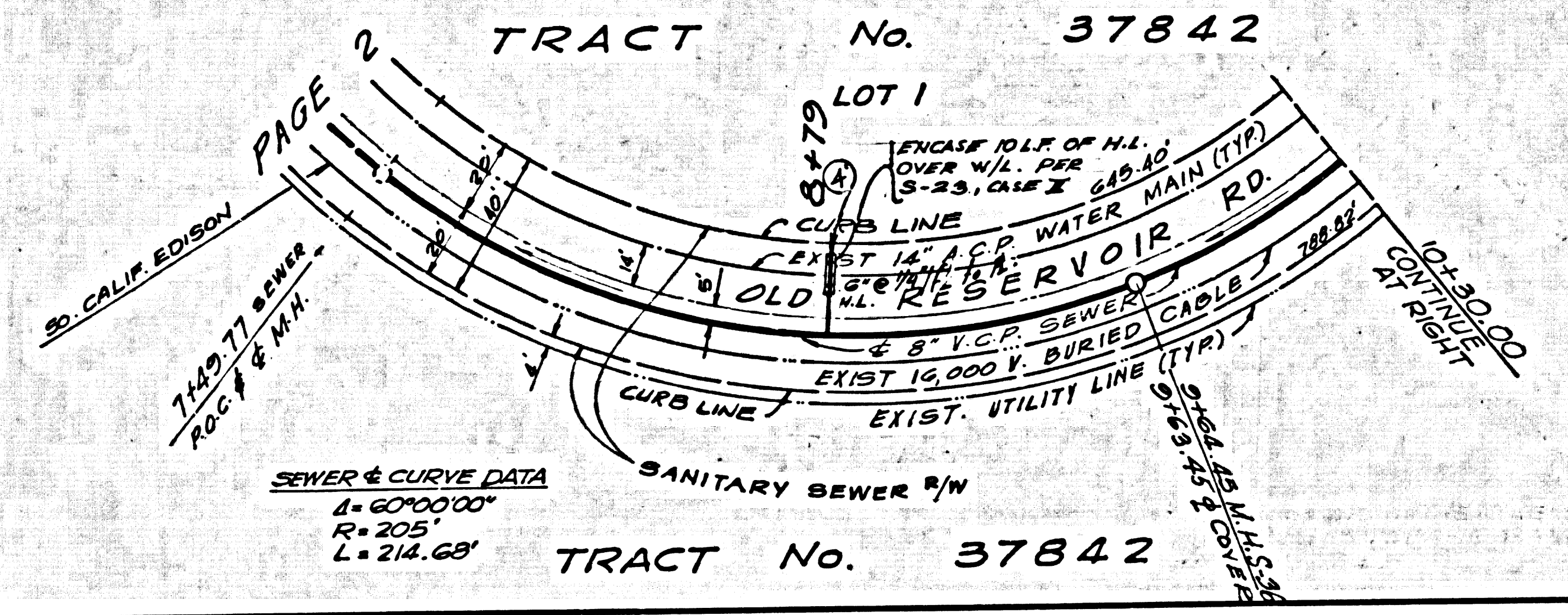




DOUBLE SCALE VERTICALLY

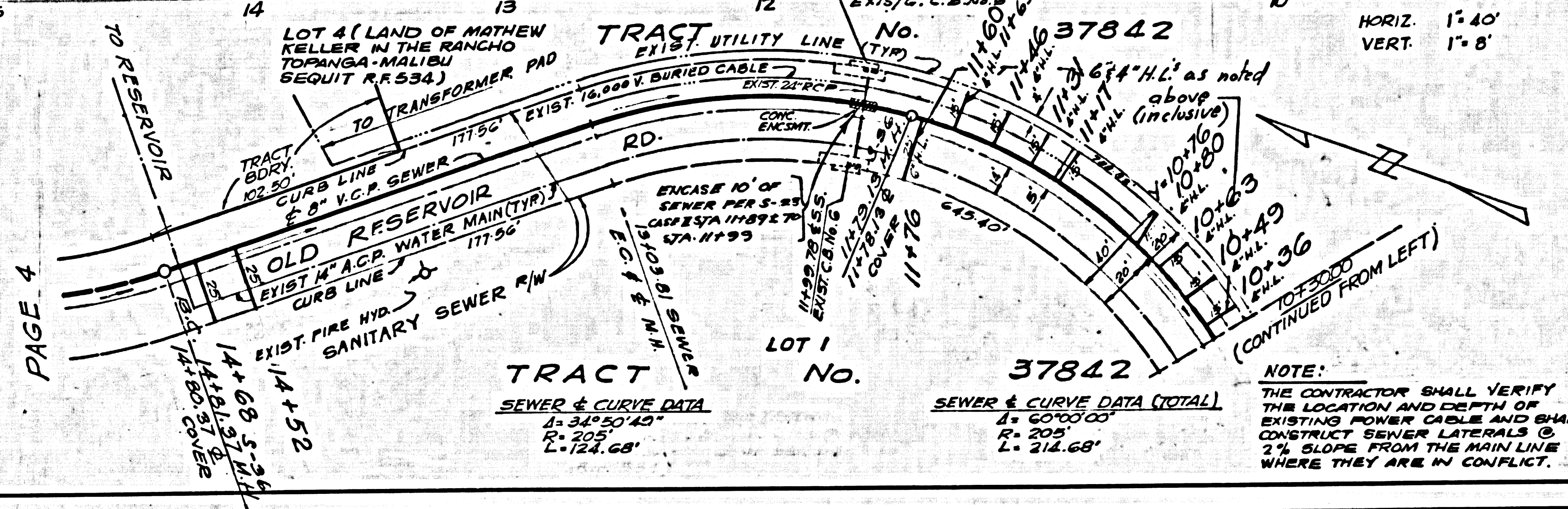
NO CHARGE FOR CONNECTIONS

47807



SEWER & CURVE DATA
A=60'00'00"
R=205'
L=214.68'

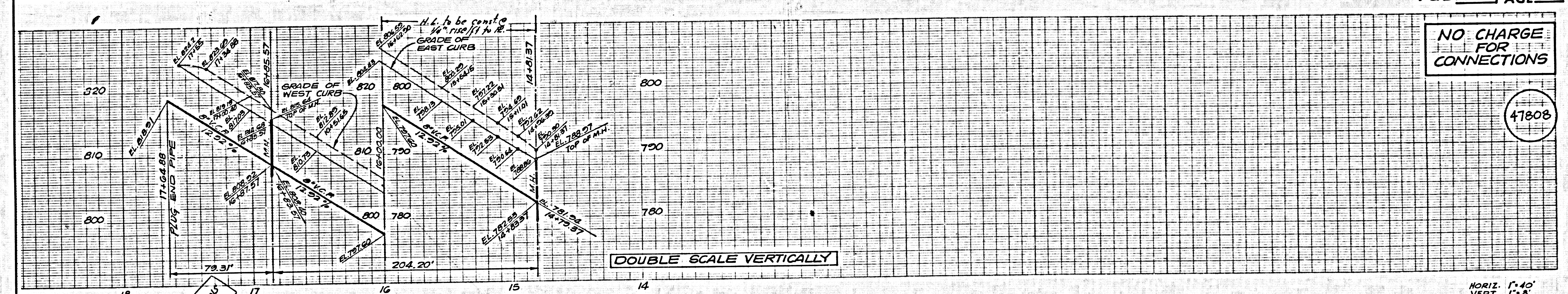
TRACT No. 37842



SEWER & CURVE DATA
A=34'20'45"
R=205'
L=124.68'

SEWER & CURVE DATA (TOTAL)
A=60'00'00"
R=205'
L=214.68'

NOTE:
THE CONTRACTOR SHALL VERIFY THE LOCATION AND DEPTH OF EXISTING POWER CABLES AND SHALL CONSTRUCT SEWER LATERALS & 2" SLOPE FROM THE MAIN LINE WHERE THEY ARE IN CONFLICT.

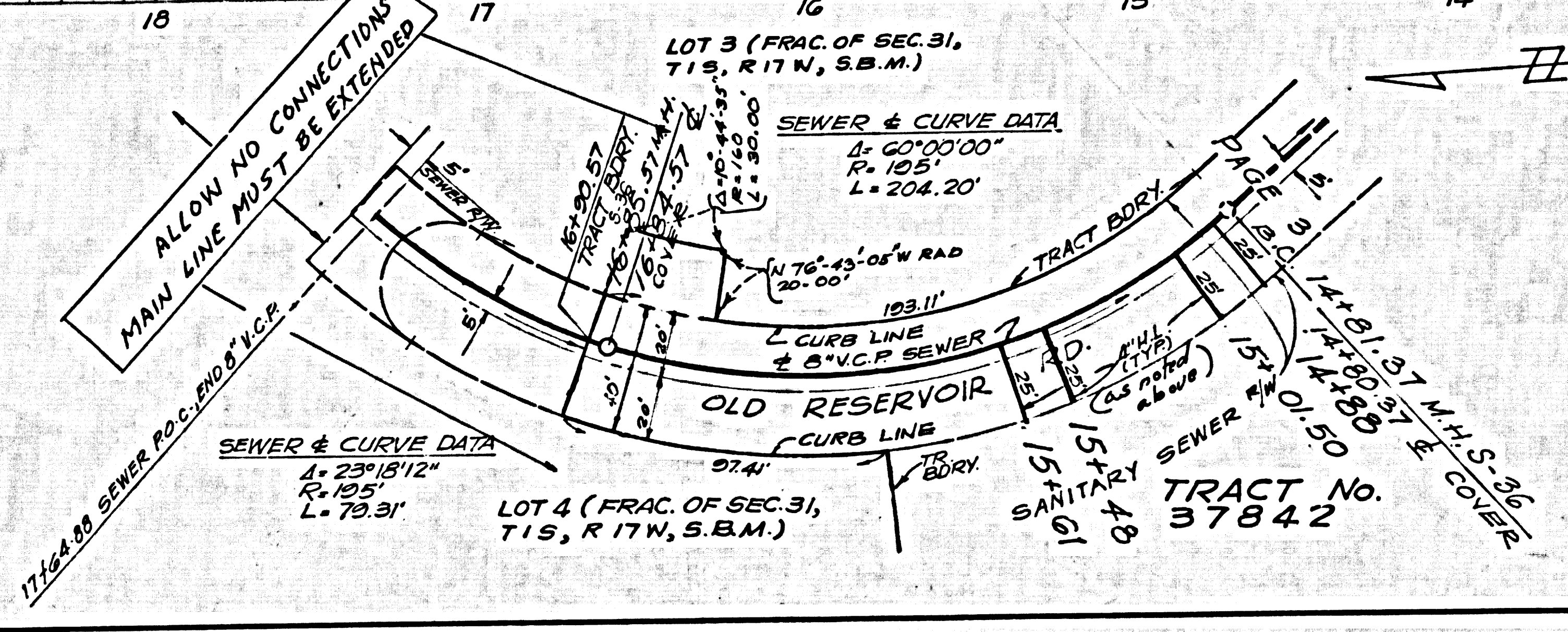


NO CHARGE FOR CONNECTIONS

47808

DOUBLE SCALE VERTICALLY

HORIZ. 1"=40'
VERT. 1"=8'



SEWER & CURVE DATA
A=60'00'00"
R=125'
L=204.20'

SEWER & CURVE DATA
A=23'18'12"
R=125'
L=79.31'

TRACT No. 37842