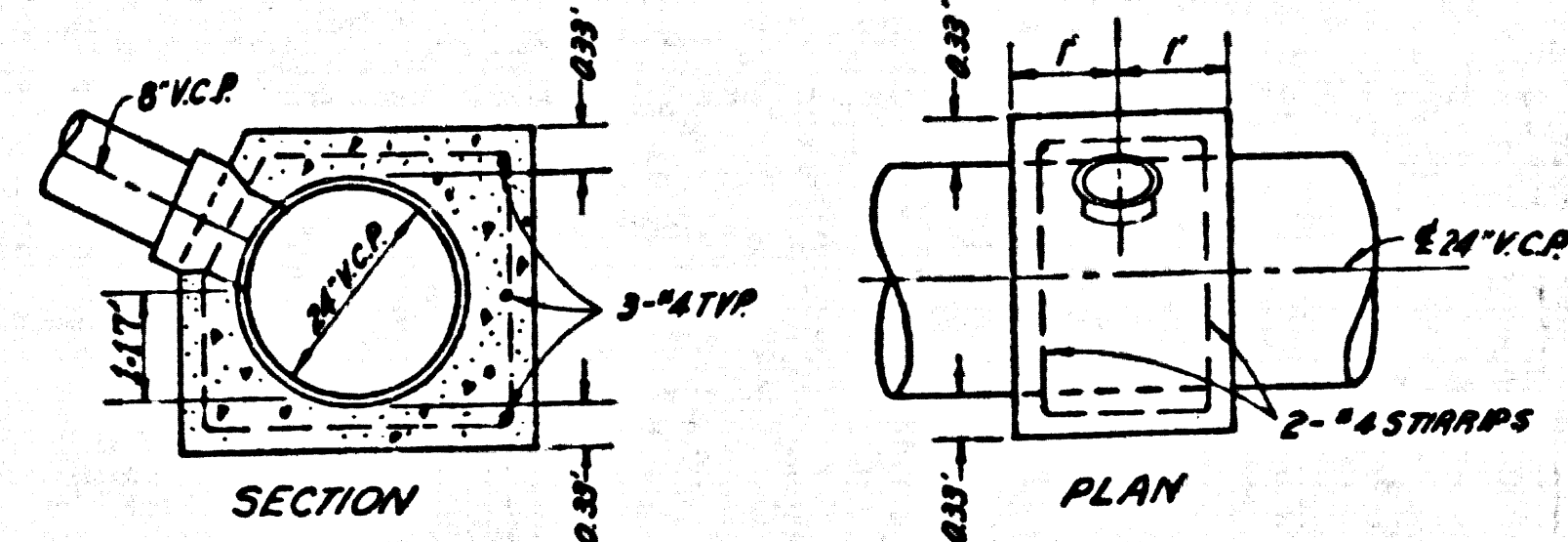


TO BE CONSTRUCTED IN
TRACT NO. 35795
PRIVATE CONTRACT NO. 9729

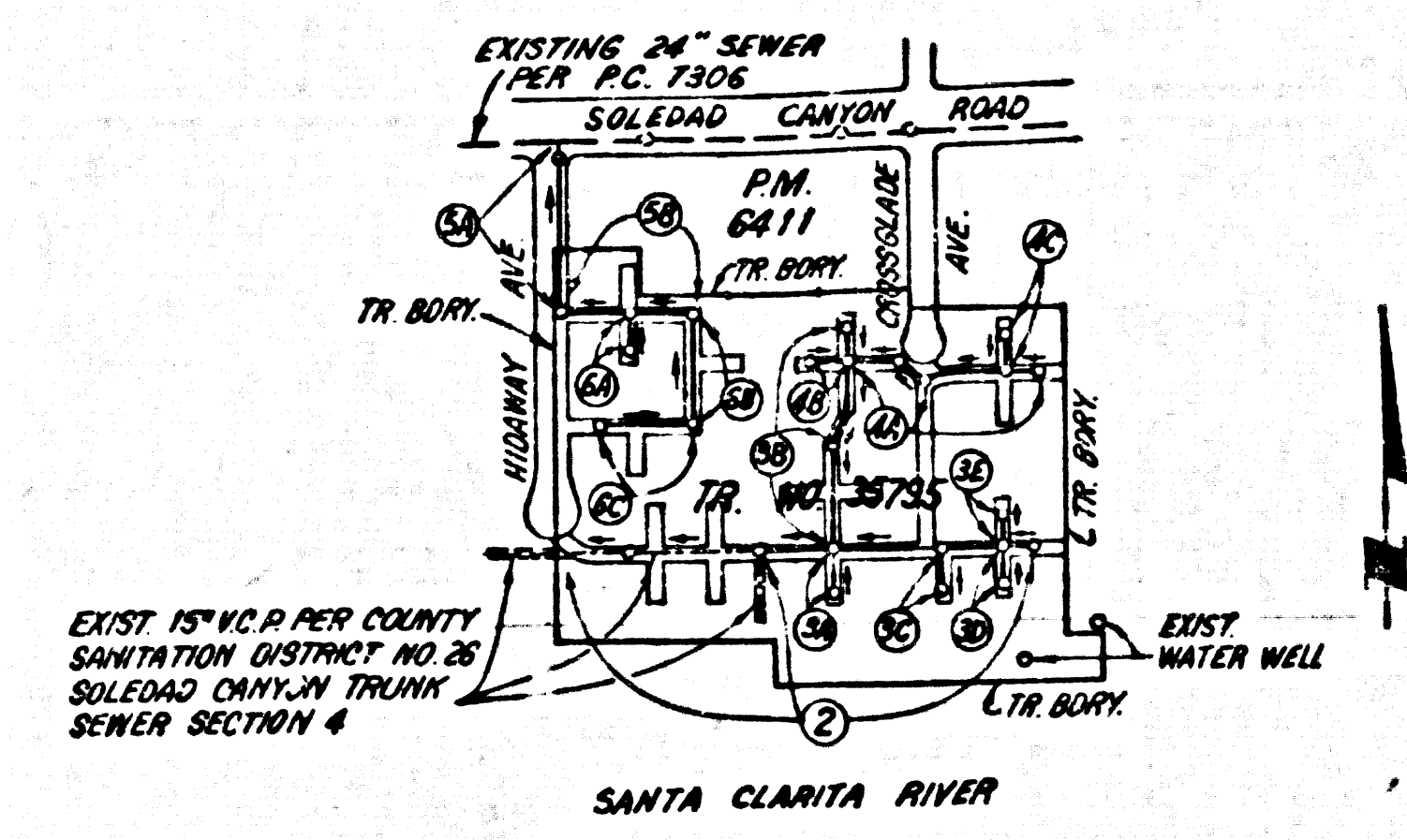
W.S. 62
3 SHEETS, 6 PAGES (47704)
SCALE: HORIZ. 1" = 40' VERT. 1" = 4'
JUNE, 1979
PREPARED IN THE OFFICES OF
SISK AND ASSOCIATES
15230 BURBANK BLVD. VAN NUYS
CALIFORNIA 91411 (213) 787-8550
BY: *Neil C. Leary*
REG. C.E. No. 21933

B.M. B.L. 1724 ELEV. 1366.606
L.A.C.R.D. B.M. - TAG E CURB WHITES CANYON
RD. 40' NORTH B.C.R. @ N.E. COR. SOLEDAD CYN.
RD. & WHITES CANYON RD., 134 FT. N. & 40 FT. E.
@ INT. NEWHALL QUAD. 1972.



STA. 0+50
CONCRETE COLLAR DETAIL
NO SCALE

REVISION
REVISION NO. 1 DATE: 4/3/1980 (PAGE 2)
(A) - CHIMNEY AND 6" H.L. TO BUILDINGS 20 & 27 AT STA. 9+54.00 WERE ELIMINATED.
(B) - CONSTRUCTION OF A CHIMNEY ON EXISTING BASE AND 6" H.L. FOR BUILDINGS 20 & 27 AT STA. 8+95 WERE ADDED.
(C) - REVISE LOT LINES PER TRACT MAP.
APPROVED BY: *Ralph David Sweet* 4/1/80
OFFICE OF COUNTY ENGINEER



INDEX MAP
SCALE: 1" = 600'
P.C. 9729

NOTE: NUMBERS IN CIRCLES INDICATE PAGE NUMBER

NO CONNECTION FOR THE DISPOSAL OF INDUSTRIAL WASTES SHALL BE MADE TO SEWERS SHOWN ON THESE DRAWINGS UNLESS A PERMIT FOR INDUSTRIAL WASTE WATER DISCHARGE HAS BEEN ISSUED BY THE SANITATION DISTRICTS FOR SAID CONNECTION.
BEFORE BREAKING INTO OR CONSTRUCTION ON A COUNTY SANITATION DISTRICT SEWER AND PRIOR TO FINAL ACCEPTANCE OF THE PROJECT, INDUSTRIAL WASTE WATER DISCHARGE SHALL BE MADE TO THE SANITATION DISTRICTS AS REQUIRED BY THE DISTRICTS.

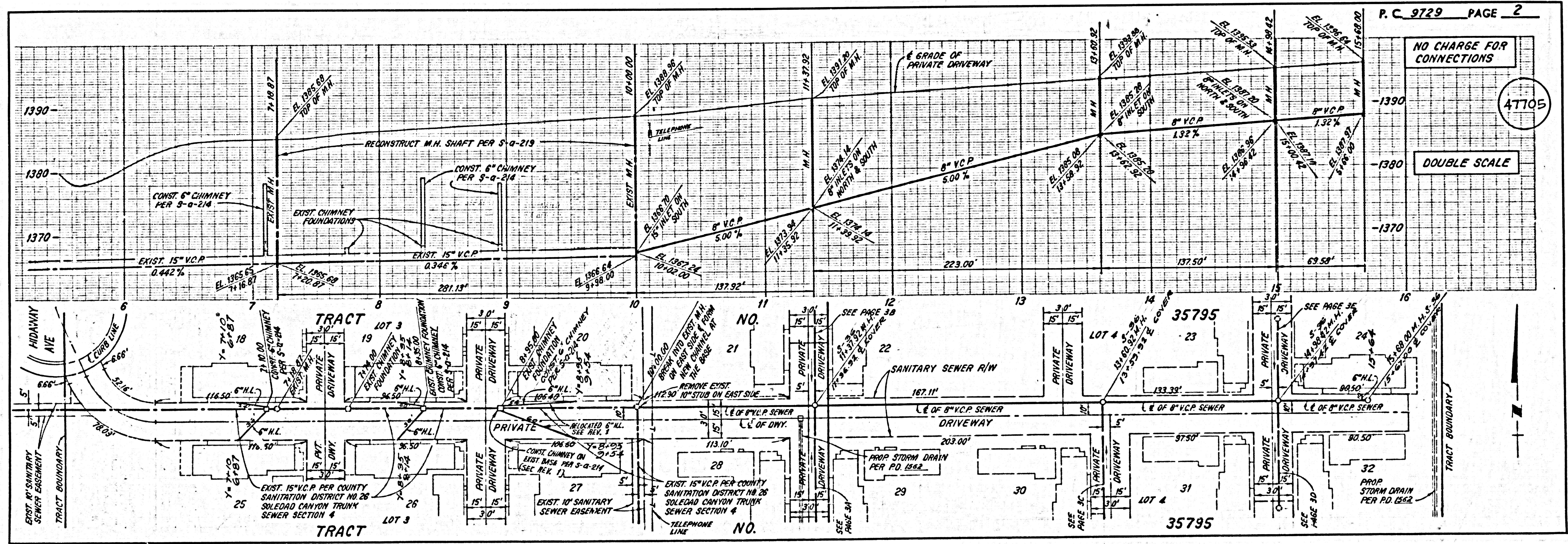
- GENERAL NOTES:**
1. ELEVATIONS ARE IN FEET ABOVE U.S.C. & G.S. SEA LEVEL DATUM OF 1929.
 2. NO REVISIONS SHALL BE MADE IN THESE PLANS WITHOUT THE APPROVAL OF THE COUNTY ENGINEER.
 3. NO REPRESENTATIVE OF THE COUNTY ENGINEER WILL SURVEY OR LAY OUT A PORTION OF THE WORK.
 4. GRADES TO WHICH THIS IMPROVEMENT IS TO BE CONSTRUCTED ARE SHOWN ON PLANS AND PROFILE. GRADE POINTS FOR TOP OF CURB, CENTER LINE OF DRIVE, OR CENTER LINE OF ALLEYS ARE SHOWN BY CIRCLES ON PROFILES. AT ALL POINTS BETWEEN DESIGNATED POINTS THE GRADE SHALL BE ESTABLISHED SO AS TO CONFORM TO A STRAIGHT LINE DRAWN BETWEEN SAID DESIGNATED POINTS.
 5. THE PRIVATE ENGINEER SHALL FURNISH THE COUNTY ENGINEER WITH GRADE SHEETS AND STATIONING FOR ALL 12" V.C.P. LATERALS AND 12" OR 18" BRANCHES AND SHALL PROVIDE STAKES FOR THEM AT THEIR PROPER LOCATIONS WITH STATIONING PLAINLY MARKED. ALL HOUSE LATERALS SHALL BE CONSTRUCTED IN A STRAIGHT ALIGNMENT AT RIGHT ANGLES FROM THE MAIN LINE SEWER EXCEPT AS SHOWN ON THE PLANS. HOUSE LATERALS FROM CHIMNEYS SHALL NOT HAVE AN ANGLE OF LESS THAN 45° WITH THE MAIN LINE SEWER. ANY CHANGE IN ALIGNMENT SHALL BE REQUESTED IN WRITING BY THE PRIVATE ENGINEER.
 6. THE PRIVATE ENGINEER SHALL FURNISH THE HOUSE LATERAL DEPTH AT THE PROPERTY LINE BELOW THE TOP OF CURB ELEVATION FOR EACH HOUSE LATERAL ON THE GRADE LINE.
 7. BEFORE WORK CAN BE STARTED, THE CONTRACTOR MUST OBTAIN A PERMIT TO EXCAVATE IN COUNTY STREETS FROM THE L.A. COUNTY ROAD DEPT., DISTRICT OFFICE NO. 4 AND PAY A FEE TO THE COUNTY ENGINEER, REGIONAL OFFICE, TO COVER THE COST OF CONSTRUCTION INSPECTION AND RECORD PLANS.
 8. IF WORK IS TO BE DONE IN A STATE HIGHWAY, A PERMIT MUST BE OBTAINED FROM THE STATE OF CALIFORNIA, DIVISION OF HIGHWAYS, 120 SOUTH BRINK STREET, LOS ANGELES, CALIFORNIA.
 9. APPROVAL OF THIS PLAN BY THE COUNTY OF LOS ANGELES DOES NOT CONSTITUTE A REPRESENTATION AS TO THE ACCURACY OF THE LOCATION OF OR THE EXISTENCE OR NON-EXISTENCE OF ANY UNDERGROUND UTILITY PIPE, OR STRUCTURE WITHIN THE LIMITS OF THE PROJECT. THE NOTE APPLIES TO ALL SIZES.
 10. REFER TO SECTION 7-16.4.1 OF THE STANDARD SPECIFICATIONS, REGARDING SAFETY DURING CONSTRUCTION.
 11. PRIOR TO THE ISSUANCE OF THE NECESSARY CONSTRUCTION PERMIT, THE CONTRACTOR SHALL OBTAIN AND FILE WITH THE COUNTY ENGINEER COPIES OF A PERMIT TO EXCAVATE IN COUNTY STREETS FROM THE LOS ANGELES COUNTY ROAD DEPARTMENT, A PERMIT FOR EXCAVATIONS AND TRENCHES FROM THE STATE OF CALIFORNIA, DIVISION OF INDUSTRIAL SAFETY AND A CERTIFICATE OF WORKER'S COMPENSATION INSURANCE WITH THE IDENTIFICATION OF COUNTY ENGINEER, 550 SOUTH WILLOW, LOS ANGELES, CALIFORNIA 90005, ISSUED AS THE CONTRACTOR SHALL BE NOTIFIED 30 DAYS PRIOR TO COMMENCEMENT OF PROJECT.

- CONSTRUCTION NOTES:**
1. WORK SHALL BE CONSTRUCTED ACCORDING TO THE STANDARD SPECIFICATIONS FOR PUBLIC WORKS CONSTRUCTION 1978 EDITION WITH SUPPLEMENTS AND COUNTY ENGINEER SPECIAL PROVISIONS FOR THE CONSTRUCTION OF SANITARY SEWERS DATED 1978. ALL WORK SHALL BE CONDUCTED IN THE PRESENCE OF THE COUNTY ENGINEER.
 2. THE CONTRACTOR SHALL NOTIFY THE JUVENILE DIVISION BY TELEPHONE, 738-2158 AT LEAST TWENTY-FOUR HOURS BEFORE STARTING ANY WORK UNDER THIS CONTRACT.
 3. HOUSE LATERALS TO BE CONSTRUCTED WITH INVERTS AT PROPERTY LINE 4 FEET BELOW CURB GRADE EXCEPT AS NOTED.
 4. USE OF THE BRANCHES MAY BE USED FOR CONNECTIONS TO BALANCE SEWERS EXCEPT AS NOTED.
 5. ALL STRUCTURES SHALL BE EITHER BRICK MANHOLES PER S-36 OR PRECAST CONCRETE MANHOLES PER S-36, EXCEPT AS NOTED.
 6. PROVIDE STAKES ON THE PROPERTY LINE OR PROPERTY LINES PRODUCED AT RIGHT ANGLES TO THE SEWER LINE AT THE CENTER LINE OF EACH MANHOLE.
 7. MANHOLES FOR UNIMPROVED PORTS OF WAY TO BE 24 INCHES ABOVE FINISHED GRADE.
 8. WITHERED CLAY PIPE JOINTS SHALL BE TYPE "B", "C", OR "D" PER STANDARD SPECIFICATIONS SECTION 300-2.
 9. IF A POWER POLE IS WITHIN THREE FEET OF THE SEWER, THE SEWER SHALL BE ENCASED, PER S-23, CASE 2, TWO FEET ON EACH SIDE FROM THE POINT OF INTERFERENCE.
 10. IF DURING THE COURSE OF CONSTRUCTION IT IS DETERMINED THAT THERE IS LESS THAN FOUR FEET OF COVER OVER THE TOP OF A MAIN LINE OR HOUSE LATERAL V.C.P. SEWER WHICH IS NOT INDICATED ON THE PLANS, THE PIPE SHALL BE ENCASED PER S-23, CASE 2 UNLESS OTHERWISE APPROVED BY THE COUNTY ENGINEER.
 11. ALL JOINTS BETWEEN CLAY PIPE AND WITHERED CLAY PIPE SHALL BE MADE WITH A RUBBER SLEEVE JOINT, TYPE "C" OR "D". FIVE BARBERS IF NECESSARY PER STANDARD SPECIFICATIONS, SECTION 300-2.
 12. SEWERS TO BE TESTED FOR LEAKAGE PER SECTION 300-4.1 OF THE STANDARD SPECIFICATIONS AND SPECIAL PROVISIONS.
 13. RESURFACE ALL TRENCHES WITHIN PAVED AREAS TO MEET L.A. COUNTY ROAD DEPT. OR CALIFORNIA STATE HIGHWAY REQUIREMENTS IN ACCORDANCE WITH PERMITS.
 14. FULL COMPLIANCE WITH SECTION 300-1.3 OF THE SPECIAL PROVISIONS WILL BE REQUIRED FOR BACKFILL IN STREETS. CERTIFICATION OF BACKFILL COMPACTION AND SAND EQUIVALENTS BY A QUALIFIED, REGISTERED TESTING LABORATORY SHALL BE PROVIDED BY THE PERMITTEE PRIOR TO THE ISSUANCE OF A CERTIFICATE OF PARTIAL ACCEPTANCE.
 15. SPECIAL BACKFILL OR REPAIRMENT CONSTRUCTION:
a. BACKFILL TRENCHES AND REPAIRS UNDER DRIVEWAYS OR IN AREAS WHERE THE NORMAL FINISHED GRADES AND SURFACE SHALL BE THE SAME AS THAT APPROVED FOR THE DRIVEWAYS AND SURFACE AREAS.
b. ALL BACKFILL AND REPAIRS SHALL BE COMPACTED TO A MINIMUM OF 95% OF MAXIMUM DENSITY PER A.S.T.M. STANDARD METHOD OF TEST D698-57T OR EQUIVALENT. ACCEPTABLE COMPACTION OF SUCH COMPACTION SHALL BE SUBMITTED TO THE ENGINEERING DEPARTMENT, REGIONAL OFFICE.

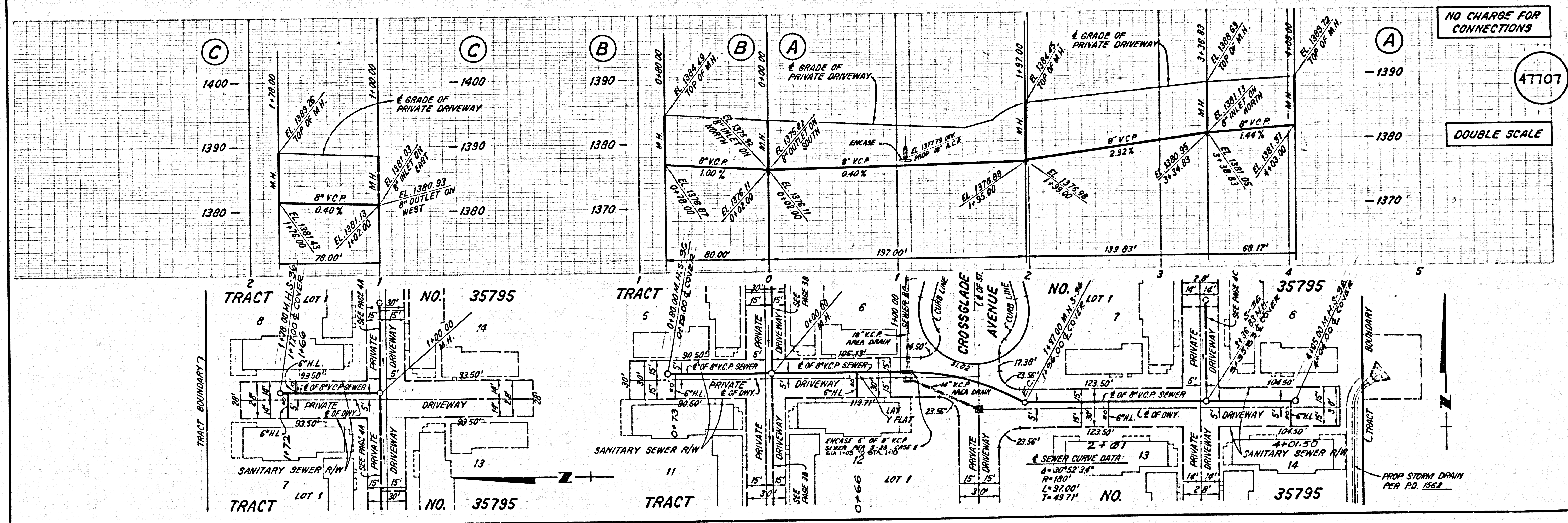
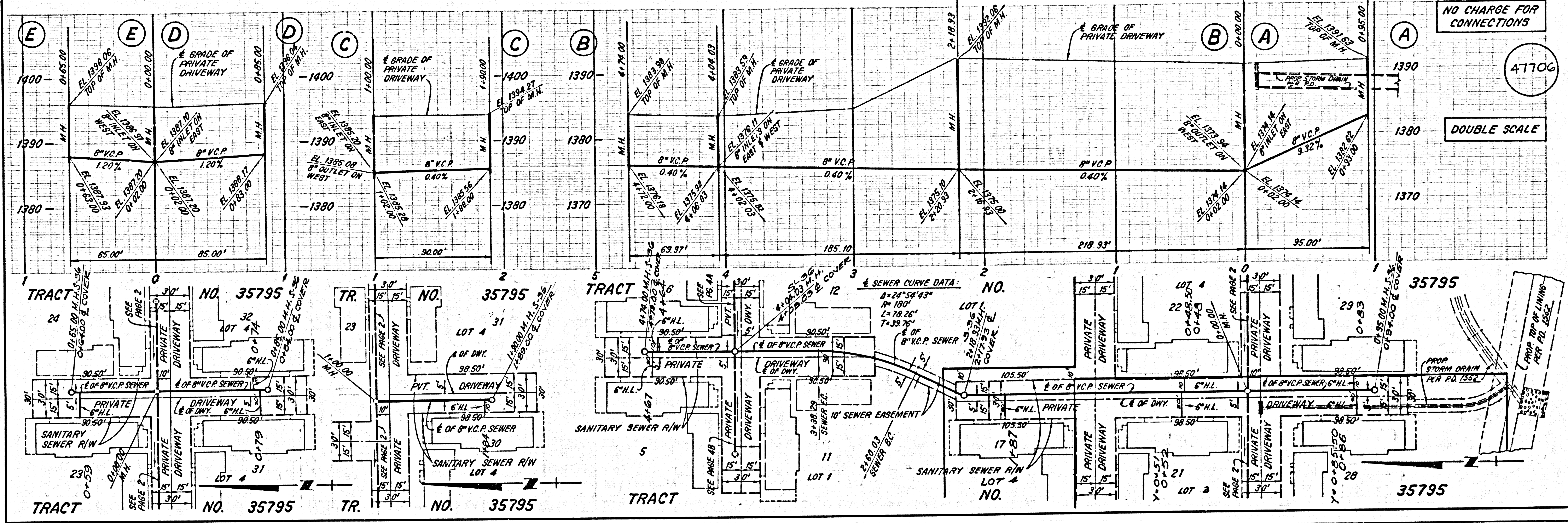
THE FOLLOWING LATEST 8" V.C.P. STANDARD PLANS ON FILE IN THE OFFICE OF THE COUNTY ENGINEER SHALL APPLY IN THE CONSTRUCTION OF THIS PROJECT:

15000	MINIMUM PUBLIC SAFETY MEASUREMENTS	6-1
15001	BRICK MANHOLES	6-2
15002	STANDARD MANHOLE STEP	6-7
15003	BEDDING FOR SEWER PIPE	6-8
15004	CLAYING AND BRICKWORK	6-9
15005	TYPE OF THE MANHOLE	6-10
15006	ALLOWABLE TRENCH WIDTHS	6-11
15007	LOCKING MANHOLE FRAME AND COVER	6-12
15008	NON-REINFORCED PRECAST CONCRETE MANHOLE	6-13

COUNTY OF LOS ANGELES, CALIFORNIA
STEPHEN T. KOONCE, COUNTY ENGINEER WALTER E. GARRISON, CHIEF ENGINEER
APPROVED *Neil C. Leary* 12/4/79 APPROVED *Ralph David Sweet* 12/13/79
CHECKED *Ralph David Sweet* 12/14/79
REG. C.E. NO. 16483
SANTA CLARITA VALLEY BLDG. DIST. 82



NO CHARGE FOR CONNECTIONS
47705
DOUBLE SCALE

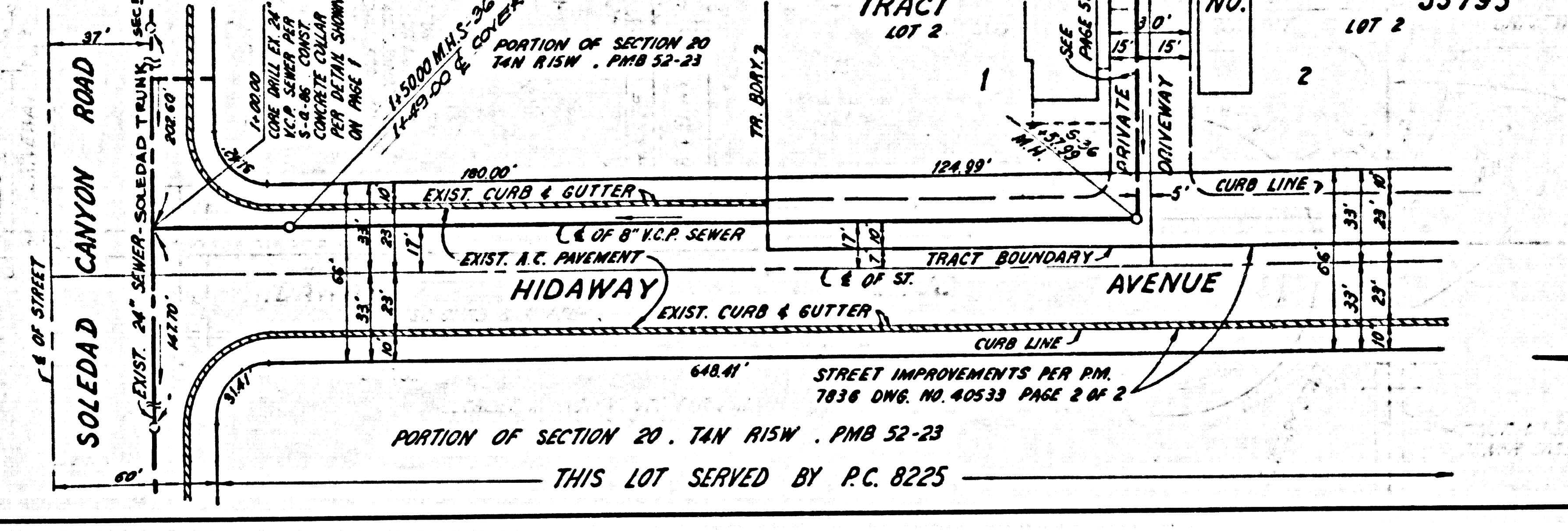
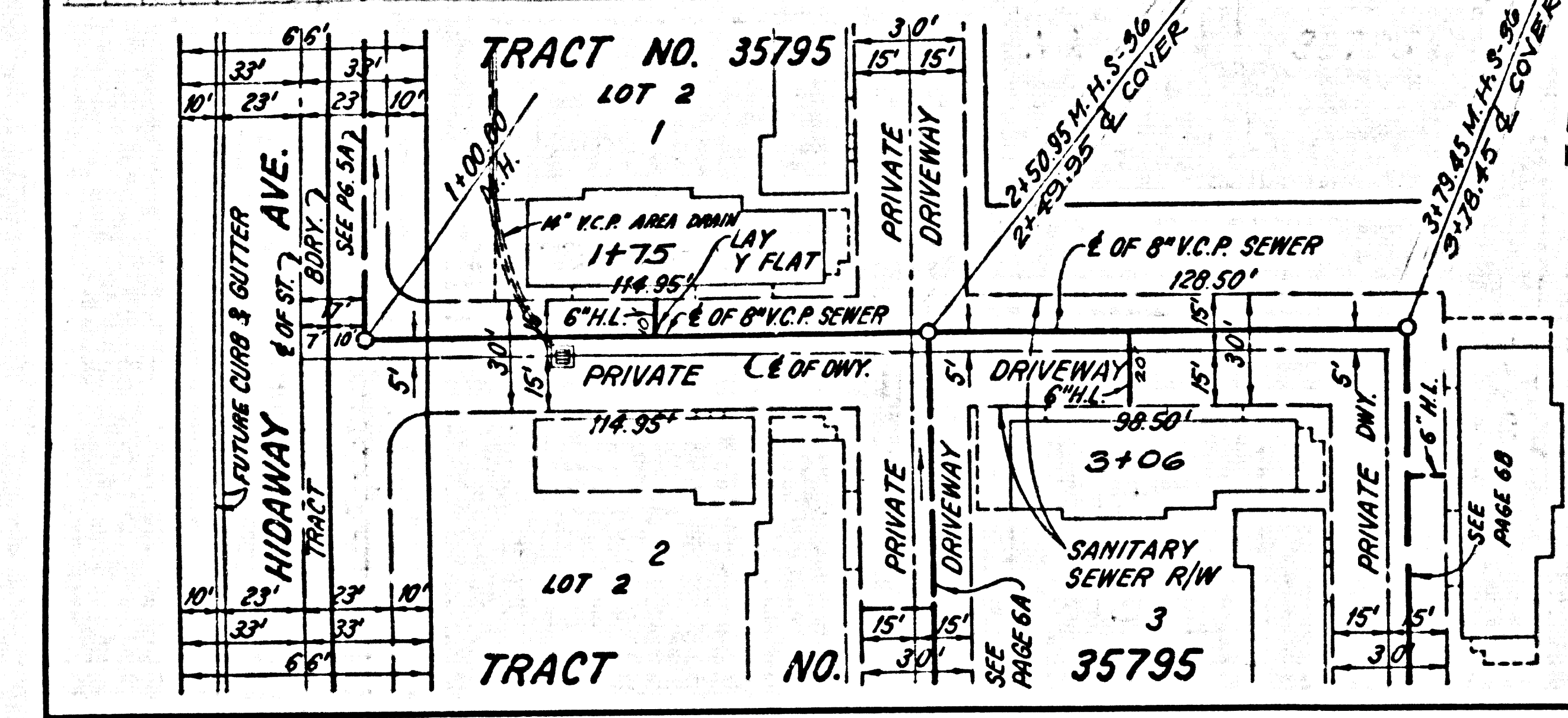
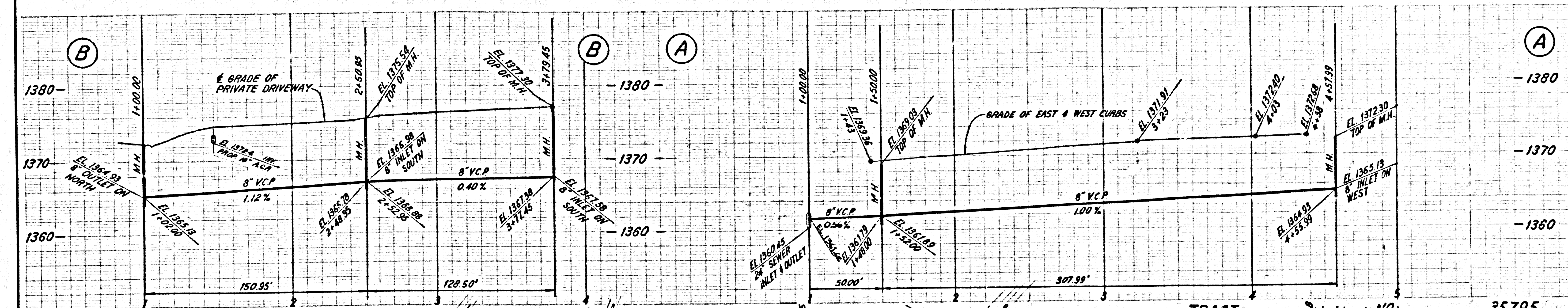


5
bc 8752

NO CHARGE FOR CONNECTIONS

47708

DOUBLE SCALE



NO CHARGE FOR CONNECTIONS

47709

DOUBLE SCALE

