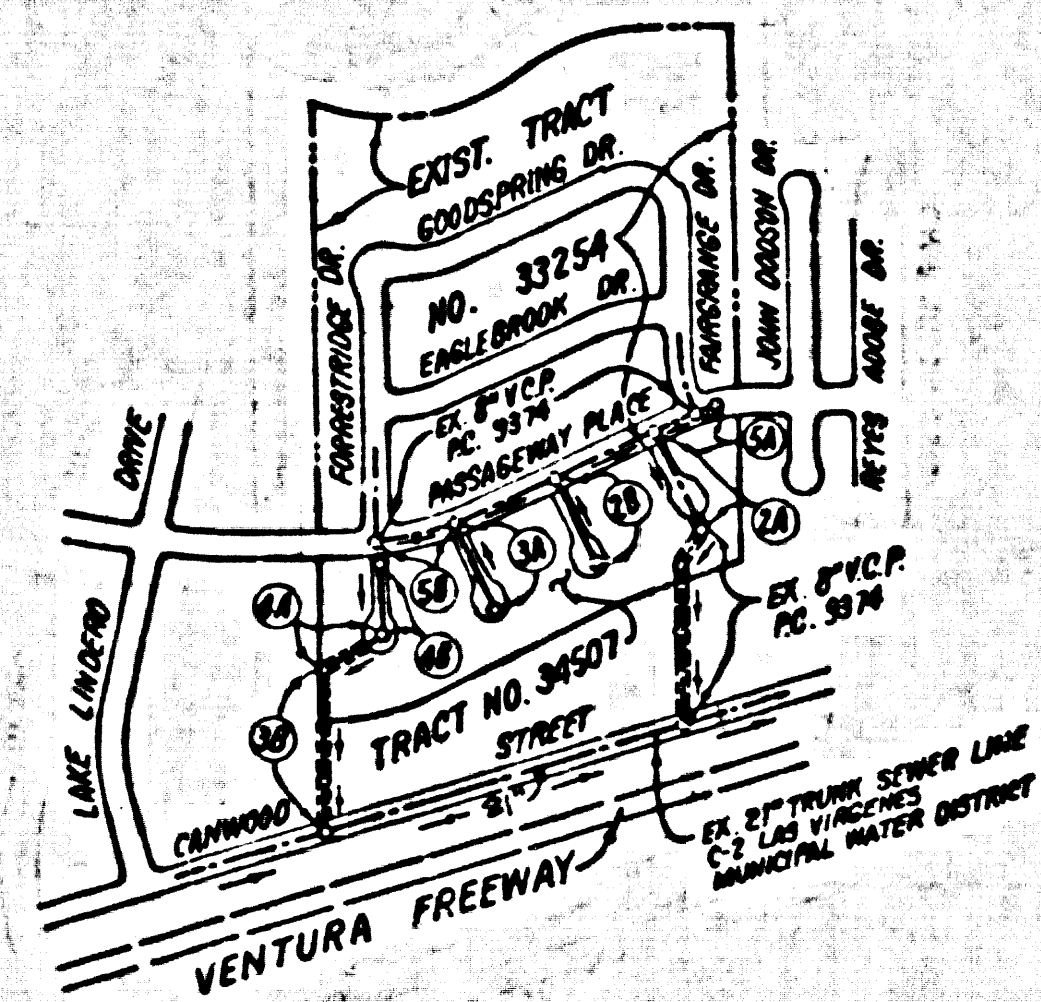


B.M. Y-1554 ELEV. 920.207
 ROAD DEPARTMENT BENCH MARK 75' S. OF CURB
 AT SOUTH EAST CORNER RETS. ABOVE ROAD OVER CROSSING
 AND WEST BOUND ON-OFF RAMP VENTURA BLVD. 40' SOUTH
 AND 22' EAST OF E INTERSECTION
 MALIBU QUAD. 19.72

NOTE: NUMBERS IN CIRCLES INDICATE PAGE NUMBERS.



INDEX MAP
 SCALE: 1"=600'
 P.C. 9733
 TRACT NO. 34507

SPECIAL BACKFILL IN EASEMENT CONSTRUCTION:
 A. BACKFILL TRENCH AND REPLACE OTHER EARTH SO AS TO ACHIEVE THE NATURAL OR FINISHED GRADES AND SLOPES SHOWN ON THE GRADING PLAN APPROVED FOR THIS DEVELOPMENT BY THE BUILDING AND SAFETY DIVISION.
 B. ALL BACKFILL AND EARTH REPLACED SHALL BE COMPACTED TO A MINIMUM OF 90% OF MAXIMUM DENSITY PER A.S.T.M. STANDARD METHOD OF TEST D698-57T AS MODIFIED. ACCEPTABLE CERTIFICATION OF SUCH COMPACTION SHALL BE SUBMITTED TO THE ENVIRONMENTAL DEVELOPMENT DIVISION.

CONSTRUCTION NOTES CONT'D
 15. FULL COMPLIANCE WITH PART III OF THE SPECIAL PROVISIONS IS REQUIRED FOR THE INSTALLATION OF A.B.C. COMPOSITE PIPE.
 16. MANHOLE WATER STOP GASKETS AND CLAMPS ARE REQUIRED FOR THE CONNECTION OF A.B.C. COMPOSITE PIPE TO MANHOLE STRUCTURES.
 17. A.B.C. SOLID WALL PIPE MUST BE USED FOR WYE AND HOUSE LATERAL CONNECTIONS TO A.B.C. COMPOSITE MAINLINE SEWER PIPE.
 18. A.B.C. COMPOSITE PIPE SHALL BE BEDDED IN CONFORMANCE WITH THE TABLE IN SECTION B-3.1 OF PART III OF THE SPECIAL PROVISIONS.
 19. 3-DEGREE DEFLECTION COEFFICIENTS SHOULD BE USED TO ACCOMPLISH RADII OF CURVATURE LESS THAN 250'

REVISION 1
 1. ADDED A.B.C.P. ALTERNATE PAGE 5A, PAGE 4A & B & PAGE 3B
 2. REVISED PROFILE STA 6+21.86 TO STA 6+12.00 PAGE 4B
 OFFICE OF COUNTY ENGINEER
 APPROVED: *[Signature]* R.C.E. 25559 DATE: 7-18-80

REVISION 2
 1. MOVED SEWER FROM CENTER LINE OF EASEMENT TO FOUR FEET EAST OF CENTER LINE OF EASEMENT. STA. 6+10.00 TO STA. 6+62.66. PAGE 3B
 2. REVISED SEWER DUE TO 1 ABOVE. STA. 6+62.66 TO STA. 6+21.86. PAGE 4A
 OFFICE OF COUNTY ENGINEER
 APPROVED: *[Signature]* R.C.E. 25559 DATE: 8-7-80

GENERAL NOTES:
 1. ELEVATIONS ARE IN FEET ABOVE U.S.C. & G.S. SEA LEVEL DATUM OF 1929.
 2. NO DIVISIONS SHALL BE MADE IN THESE PLANS WITHOUT THE APPROVAL OF THE COUNTY ENGINEER.
 3. NO REPRESENTATIVE OF THE COUNTY ENGINEER SHALL BE REQUIRED TO BE PRESENT AT ANY POINTS BETWEEN BENCH MARKS, CENTER LINE OF STREETS, OR CENTER LINE OF ALLEYS AS SHOWN BY CIRCLES ON PROFILES. AT ALL POINTS BETWEEN BENCH MARKS THE GRADE SHALL BE ESTABLISHED TO AS TO CONFORM TO A STRAIGHT LINE BEARING BETWEEN SAID BENCHMARK POINTS.
 4. THE PRIVATE ENGINEER SHALL FURNISH THE GRADE SHEETS AND STATIONING FOR ALL HOUSE LATERALS AND "T" OR "Y" BRANCHES AND SHALL PROVIDE STAKES FOR THEM AT THEIR PROPER LOCATIONS WITH STATIONING PLAINLY MARKED. ALL HOUSE LATERALS SHALL BE CONSTRUCTED IN A STRAIGHT ALIGNMENT AT RIGHT ANGLES FROM THE MAIN LINE SEWER EXCEPT AS SHOWN ON THE PLANS. HOUSE LATERALS FROM CHIMNEYS SHALL NOT HAVE AN ANGLE OF LESS THAN 45° WITH THE MAIN LINE SEWER. ANY CHANGE IN ALIGNMENT SHALL BE INDICATED IN WRITING BY THE PRIVATE ENGINEER.
 5. THE PRIVATE ENGINEER SHALL FURNISH THE HOUSE LATERAL NORTH AT THE PROPERTY LINE SHOW THE TOP OF CURB ELEVATION FOR EACH HOUSE LATERAL ON THE GRADE SHEET.
 6. BEFORE WORK CAN BE STARTED, THE CONTRACTOR MUST OBTAIN A PERMIT TO EXCAVATE IN COUNTY STREETS FROM THE L.A. COUNTY ROAD DEPT., DISTRICT OFFICE NO. 3, AND PAY A FEE TO THE COUNTY ENGINEER, \$50.00 (EIGHTY DOLLARS).
 7. TO COVER THE COST OF CONSTRUCTION INSPECTION AND INSURE PLANS.
 8. IF WORK IS TO BE DONE IN A STATE HIGHWAY, A PERMIT MUST BE OBTAINED FROM THE STATE OF CALIFORNIA, DIVISION OF HIGHWAYS, THE SOUTH BRIDGE STREET, LOS ANGELES, CALIFORNIA.
 9. APPROVAL OF THIS PLAN BY THE COUNTY OF LOS ANGELES DOES NOT CONSTITUTE A REPRESENTATION AS TO THE ACCURACY OF THE LOCATION OF OR THE EXISTENCE OR NON-EXISTENCE OF ANY UNDERGROUND UTILITY PIPE, OR STRUCTURE WITHIN THE LIMITS OF THIS PROJECT. THIS NOTE APPLIES TO ALL PAGES.
 10. PRIOR TO THE ISSUANCE OF THE REQUIRED SEWER CONSTRUCTION PERMIT, THE CONTRACTOR SHALL OBTAIN AND FILE WITH THE COUNTY ENGINEER COPIES OF A PERMIT TO EXCAVATE IN COUNTY STREETS FROM THE LOS ANGELES COUNTY ROAD DEPARTMENT, A PERMIT FOR EXCAVATIONS AND TRENCHES FROM THE STATE OF CALIF., DIVISION OF INDUSTRIAL SAFETY AND A CERTIFICATE OF WORKER'S COMPENSATION INSURANCE WITH THE DEPT. OF COUNTY ENGINEER, 950 S. VERDANT, LOS ANGELES, CALIF. 90020, NAMED AS THE CERTIFICATE HOLDER TO BE NOTIFIED 30 DAYS PRIOR TO CANCELLATION OF POLICY.

CONSTRUCTION NOTES:
 1. WORK SHALL BE CONSTRUCTED ACCORDING TO THE STANDARD SPECIFICATIONS FOR PUBLIC WORKS CONSTRUCTION (1978 EDITION) WITH THE SUPPLEMENTARY AND COUNTY ENGINEER SPECIAL PROVISIONS FOR THE CONSTRUCTION OF SANITARY SEWERS DATED 3-25-80. ALL WORK SHALL BE PROTECTED DURING THE PRESENCE OF THE COUNTY ENGINEER.
 2. THE CONTRACTOR SHALL NOTIFY THE ENVIRONMENTAL DEVELOPMENT DIVISION (T.S.B. 5106), AT LEAST TWENTY-FOUR HOURS BEFORE STARTING ANY WORK UNDER THIS CONTRACT.
 3. HOUSE LATERALS TO BE CONSTRUCTED WITH INVERTS AT PROPERTY LINE & FEET BELOW CURB GRADE EXCEPT AS NOTED.
 4. ALL JOINTS BETWEEN CAST IRON PIPE AND WITHIN CAST IRON PIPE SHALL BE MADE WITH A RUBBER SLEEVE JOINT, TYPE "C" OR "D".
 5. ALL JOINTS BETWEEN CAST IRON PIPE AND WITHIN CAST IRON PIPE SHALL BE MADE WITH APPROVED FITTINGS.
 6. ALL TRENCHES SHALL BE FULFILLED WITH BACKFILL TO THE STANDARD SPECIFICATIONS AND SPECIAL PROVISIONS.
 7. INSURANCE ALL TRENCHES WITHIN PUBLIC AREAS TO MEET L.A. COUNTY ROAD DEPT. OR CALIFORNIA STATE HIGHWAY REQUIREMENTS BY ACCORDANCE WITH PERMITS.
 8. FULL COMPLIANCE WITH SECTION 204-5 OF THE SPECIAL PROVISIONS WILL BE REQUIRED FOR BACKFILL IN STREETS CENTRIC.
 9. THE METHOD OF BACKFILL COMPACTION AND SAND EQUIVALENTS BY A QUALIFIED, WRITTEN TESTING LABORATORY SHALL BE PROVIDED BY THE PERMITTEE PRIOR TO THE ISSUANCE OF A CERTIFICATE OF PARTIAL ACCEPTANCE.

PROFILE, ALIGNMENT AND GRADE OF
SANITARY SEWERS PAGE 1
 TO BE CONSTRUCTED IN

TRACT NO. 34507
 PRIVATE CONTRACT NO. 9733

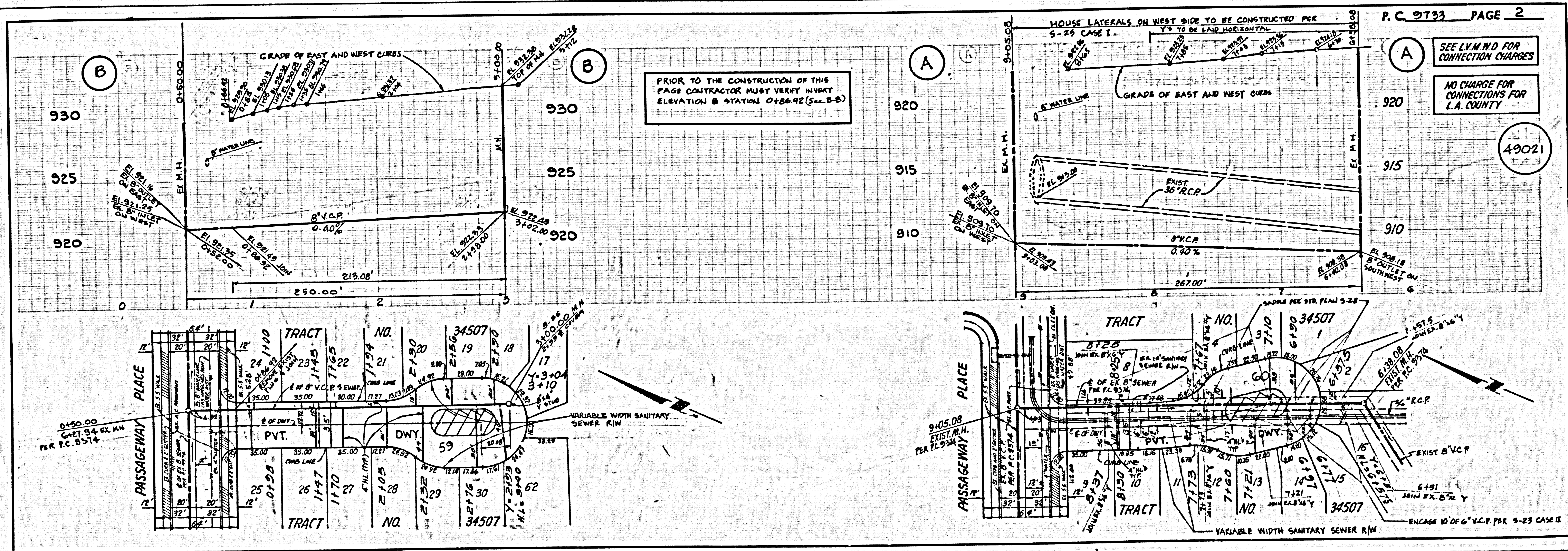
W.S. 93
 3 SHEETS, 5 PAGES
 SCALE: HORIZ. 1"=40' VERT. 1"=4'
 AUGUST, 1979
 PREPARED IN THE OFFICES OF
 SIKAND ENGINEERING ASSOC.
 12250 BURBANK BLVD., VAN NUYS,
 CALIF. 91411 - (213) 787-8550
 BY: *[Signature]*
 REG. C. No. 5112

49020

THE FOLLOWING LATEST REVISED STANDARD PLANS ON FILE IN THE OFFICE OF THE COUNTY ENGINEER SHALL APPLY IN THE CONSTRUCTION OF THIS PROJECT:

USING	5-3
JANUARY PUBLIC SAFETY REQUIREMENTS	5-3
BRICE MANHOLE	5-3
STANDARD MANHOLE STOP	5-37
MANHOLE FOR SEWER PIPE	5-38
CHANGING AND BRACING	5-39
WYE OR TE SUPPORT	5-39
ALLOWABLE TRENCH WIDTHS	5-39
SOCKET MANHOLE FRAME AND COVER	5-39
HOUSE-ANCHORED REINFORCED CONCRETE MANHOLE	5-39
SAOLES FOR HOUSE LATERALS	5-28

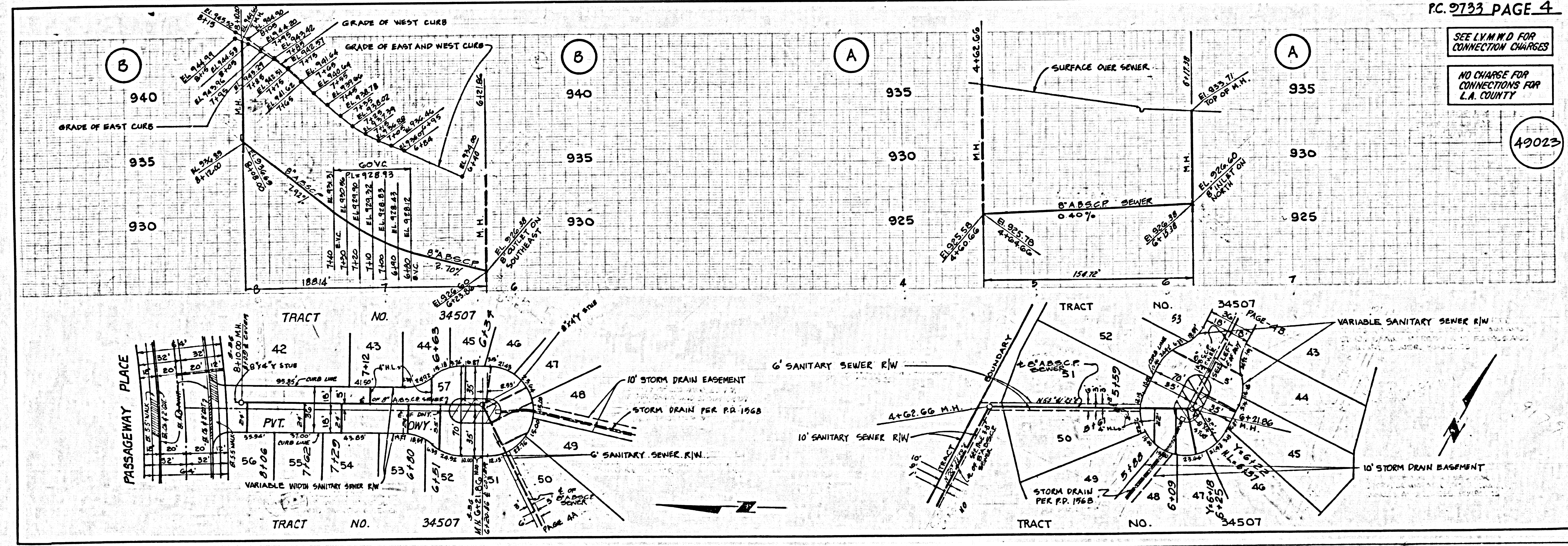
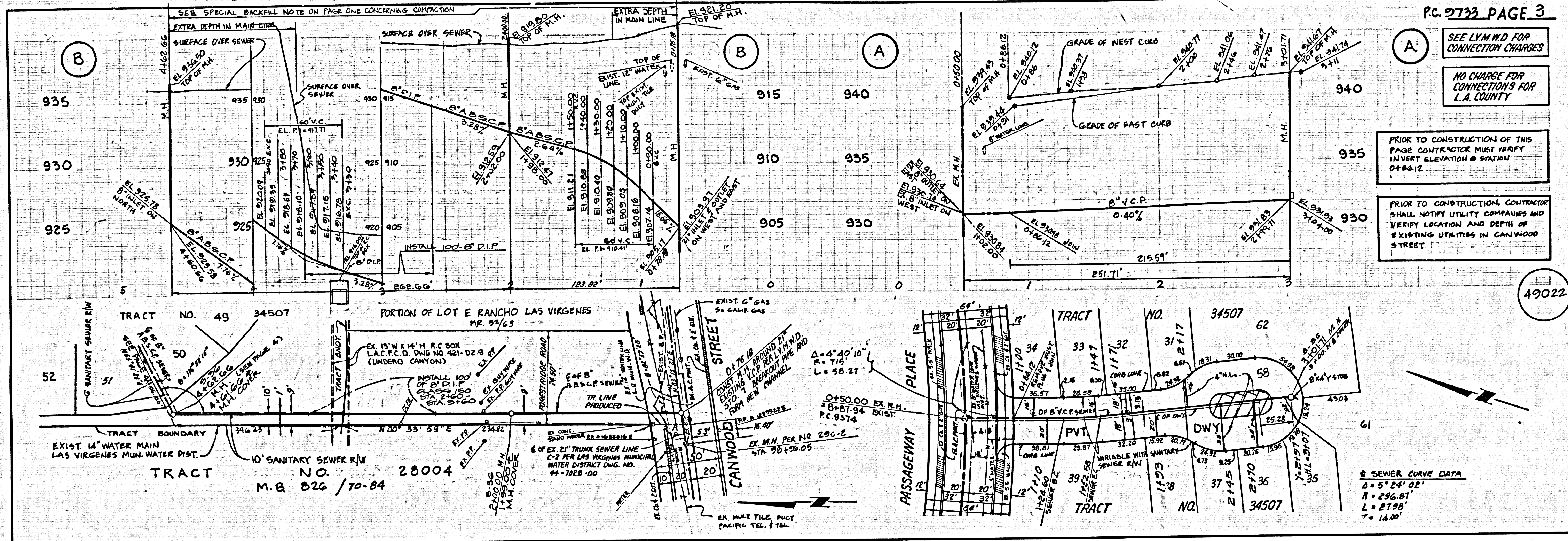
COUNTY OF LOS ANGELES, CALIFORNIA
 STEPHEN J. KODICE, COUNTY ENGINEER L.A.S. VIRGENES MUNICIPAL WATER DISTRICT
 APPROVED: *[Signature]* 3/12/80 APPROVED: *[Signature]* 3/24/80
 CHECKED: *[Signature]* 3/12/80
 REG. C.E. NO. 16883
 CALABASAS BLDG. DIST. 21



PRIOR TO THE CONSTRUCTION OF THIS PAGE CONTRACTOR MUST VERIFY INVERT ELEVATION @ STATION 0+26.42 (5-B-B)

P.C. 9733 PAGE 2

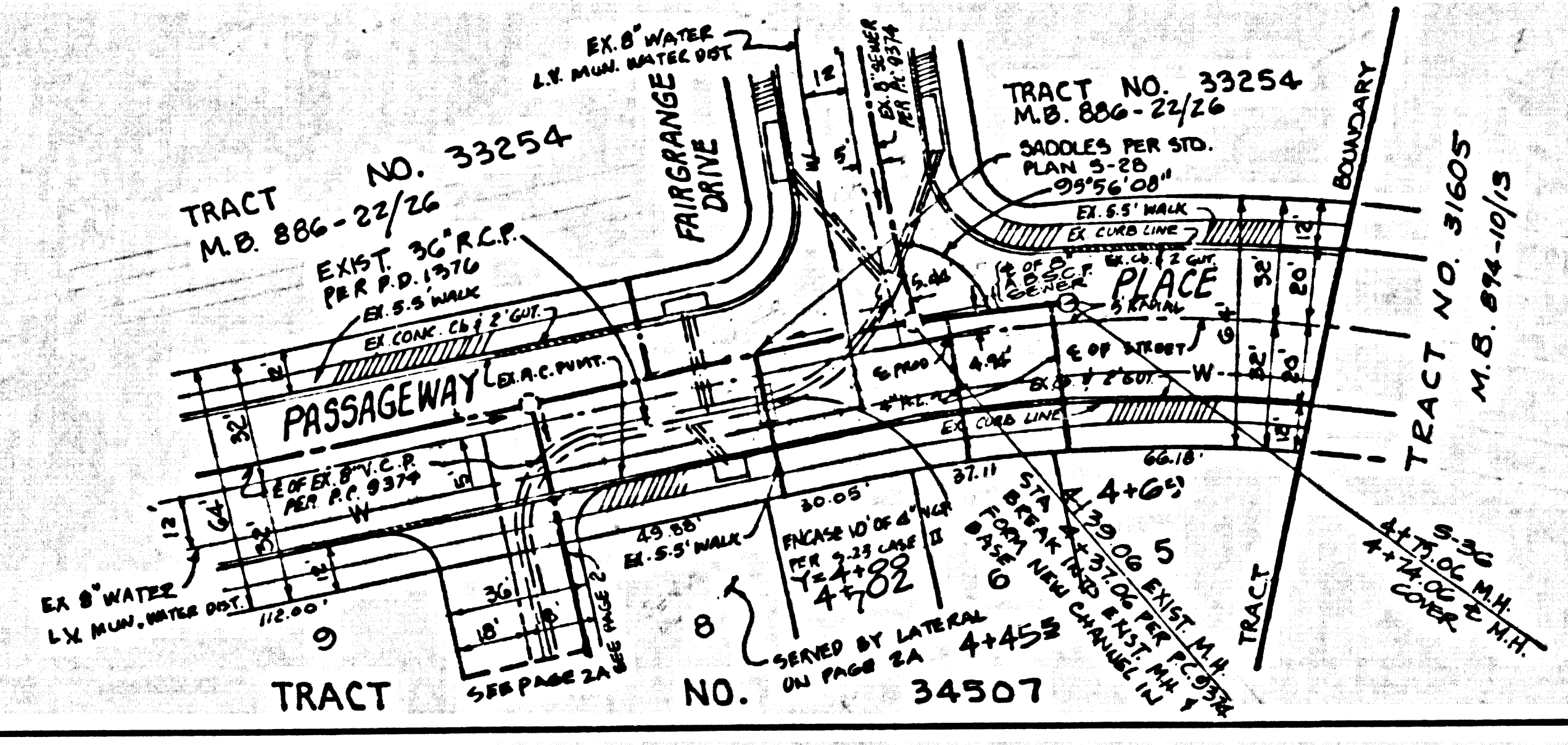
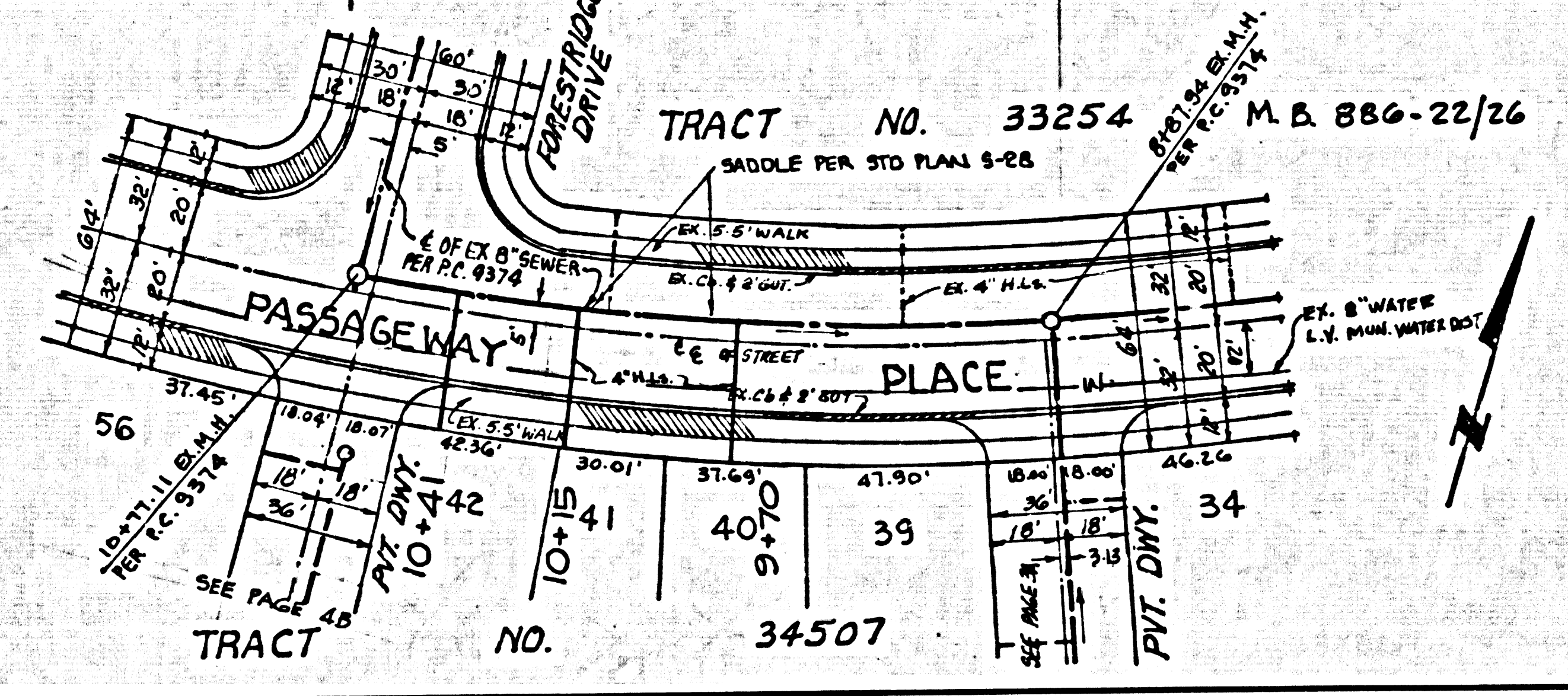
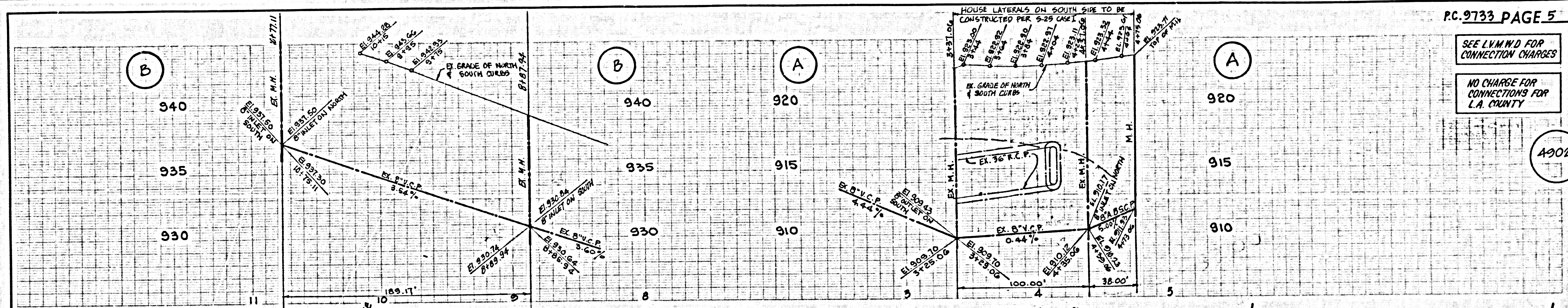
SEE L.V.M.D. FOR CONNECTION CHARGES
 NO CHARGE FOR CONNECTIONS FOR L.A. COUNTY
 49021



SEE L.V.M.W.D FOR CONNECTION CHARGES

NO CHARGE FOR CONNECTIONS FOR L.A. COUNTY

A9024



1755 CP