

TO BE CONSTRUCTED IN

TRACT NO. 33629

PRIVATE CONTRACT NO. 9734

INDEX 270 5 137

W.S. 62-82

49063

3 SHEETS, 6 PAGES

SCALE: HORIZ. 1"=60' VERT. 1"=20'

DATE: AUGUST, 1979

PREPARED IN THE OFFICES OF

VANTAGE ENGINEERING CO.

6325 CALIFORNIA AVE.

CHANDLER, CALIF. 91307

REG. C. E. No. 1482

THE FOLLOWING LATEST EDITION STANDARD PLANS OR FILE IN THE OFFICE OF THE COUNTY ENGINEER SHALL APPLY IN THE CONSTRUCTION OF THIS PROJECT:

| | |
|------------------------------------------|-----|
| STANDARD PUBLIC SAFETY REQUIREMENTS | 6-1 |
| STANDARD MANHOLE FRAMES | 6-2 |
| STANDARD MANHOLE FRAMES FOR SEWER PIPES | 6-3 |
| STANDARD MANHOLE FRAMES AND COVERS | 6-4 |
| NON-REINFORCED PRECAST CONCRETE MANHOLES | 6-5 |
| CONCRETE PIPE AND BARS | 6-6 |

COUNTY OF LOS ANGELES, CALIFORNIA

STEPHEN J. KOONCE COUNTY ENGINEER WALTER E. GARRIBSON CHIEF ENGINEER

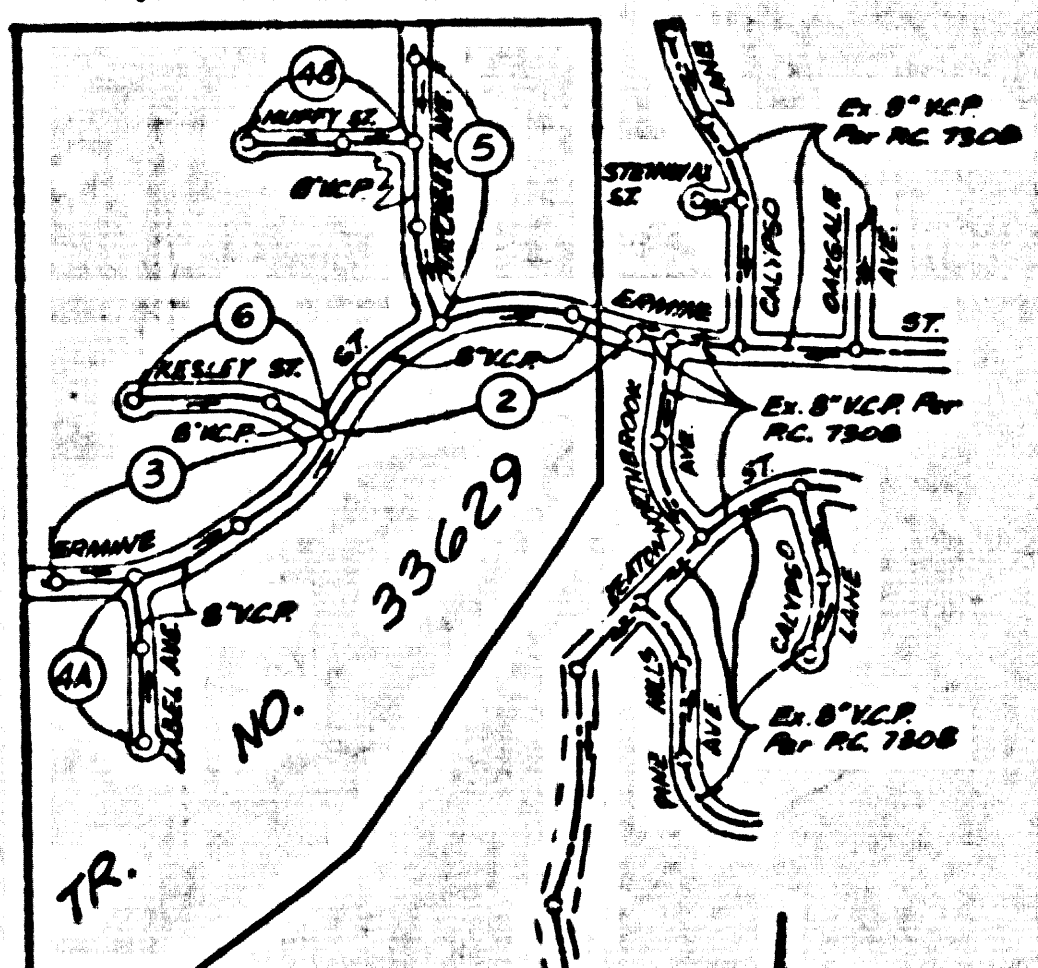
APPROVED [Signature] DATE 4-1-80

CHECKED [Signature] DATE 3/1/80

REG. C.E. NO. 16783

SANTA CLARITA VALLEY BLDG. DIST. 82

B.M. 81.1724 ELEV. 1366.606
R.D.M. TAB E. CA. WHITES CANYON RD.
SOUTH OF CA. & N.E. COR. SOLEDAD
CANYON RD. & WHITES CANYON RD. 134 FT.
N.B. 40 FT. E. INT.
NEWHALL QUAD. 1972



INDEX MAP
SCALE: 1"=600'
P.C. 9734
TRACT NO. 33629

SPECIAL BACKFILL IN EASEMENT CONSTRUCTION
A. BACKFILL TRINCH AND REPLACE OTHER EXISTING SOFTS TO
REINFORCE THE NATURAL OR FINISHED BANKS AND
SLOPES SHOWN ON THE GRADING PLAN APPROVED
FOR THIS DEVELOPMENT BY THE BUILDING AND
SAFETY DIVISION.
B. ALL BACKFILL AND EARTH REINFORCEMENT SHALL BE
CONSTRUCTED TO A MINIMUM OF 50% OF MAXIMUM
DENSITY PER A.S.T.M. STANDARD METHOD OF TEST
D 1557-57. THE FINISHED ACCEPTABLE COMPLETION
O.F. SUCH COMPLETION SHALL BE SUBMITTED TO
THE ENVIRONMENTAL DEVELOPMENT DIVISION.

NOTE:
NUMBERS IN CIRCLES
INDICATES PAGE
NUMBERS

REVISION No. 1 DATE 3-16-81
PAGE 48 PER FIN. SUR. OVER SEWER
FROM STA. 0+00.00 TO STA. 4+00.00
PAGE 48 BY STA. ELEV. CHG. FROM M.H. TO
S.M.H. AND ADD 35 L.F. OF ENCLOSURE PER 6-23
CASE 3.
APPROVED FROM [Signature] P.C.E. 15575

NO BREAKING INTO OR CONSTRUCTION ON A COUNTY
SANITATION DISTRICT SEWER AND PRIOR TO FINISHING
OF THE PROJECT SANITATION DISTRICT OFFICIALS SHALL
BE NOTIFIED BY PHONE 962-6636 SO THAT REQUIRED INSPECTION
CAN BE MADE.

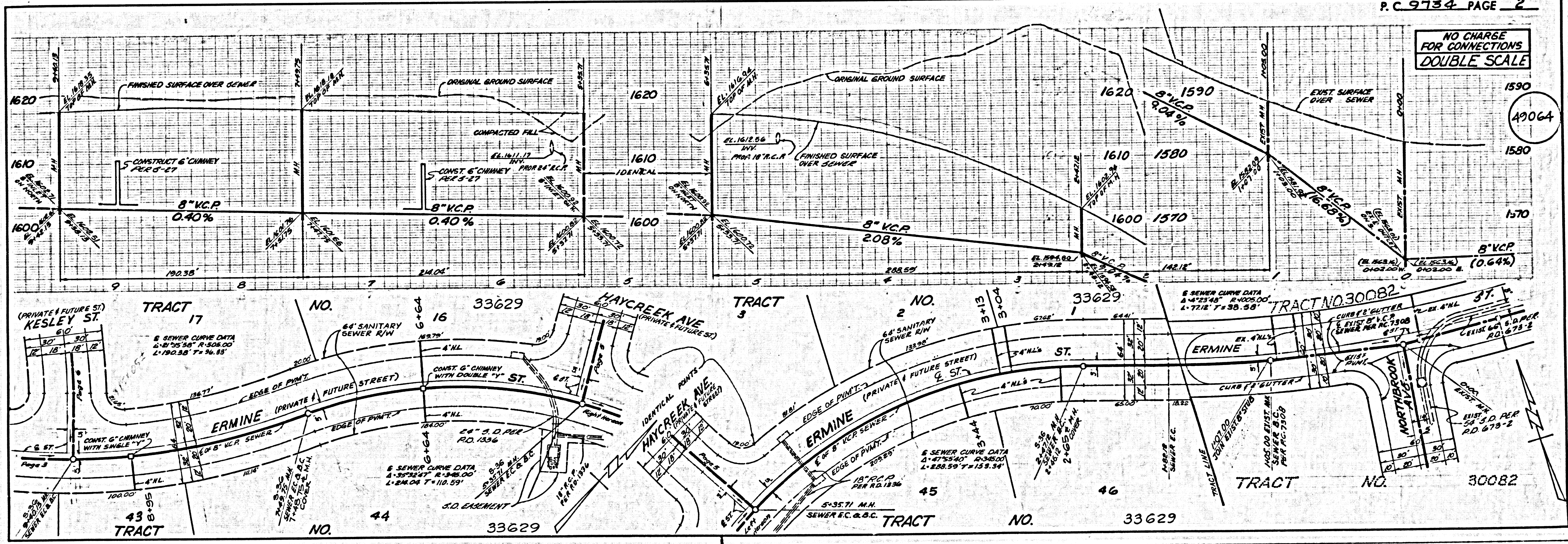
NO CONNECTIONS FOR THE DISPOSAL OF INDUSTRIAL WASTES
SHALL BE MADE TO SEWERS SHOWN ON THESE DRAWINGS UNLESS
A PERMIT FOR INDUSTRIAL WASTE WATER DISCHARGE HAS BEEN
ISSUED BY THE SANITATION DISTRICTS IN SAID CONNECTION.

GENERAL NOTES:

- ELEVATIONS ARE IN FEET ABOVE U.S.C. & G.S. SEA LEVEL DATUM OF 1929.
- NO REVISIONS SHALL BE MADE IN THESE PLANS WITHOUT THE APPROVAL OF THE COUNTY ENGINEER.
- NO DIMENSIONS SHALL BE SHOWN ON THESE PLANS UNLESS THEY ARE SHOWN ON THE PLAN OR LAY OUT ANY PORTION OF THE WORK.
- GRADES TO WHICH THIS IMPROVEMENT IS TO BE CONSTRUCTED ARE SHOWN ON PLANS AND PROFILES. GRADE POINTS FOR TOP OF CURB, CENTER LINE OF STREETS, OR CENTER LINE OF ALLEYS ARE SHOWN BY CIRCLES ON PROFILES. AT ALL POINTS BETWEEN DESIGNATED POINTS THE GRADE SHALL BE ESTABLISHED SO AS TO CONFORM TO A STRAIGHT LINE DRAWN BETWEEN SAID DESIGNATED POINTS.
- THE PRIVATE ENGINEER SHALL FURNISH THE COUNTY ENGINEER WITH GRADE SHEETS AND STATIONING FOR ALL HOUSE LATERALS AND "T" OR "Y" BRANCHES AND SHALL PROVIDE STAKES FOR THEM AT THEIR PROPER LOCATIONS WITH STATIONING PLAINLY MARKED. ALL HOUSE LATERALS SHALL BE CONSTRUCTED IN A STRAIGHT ALIGNMENT AT RIGHT ANGLES FROM THE MAIN LINE SEWER EXCEPT AS SHOWN ON THE PLANS. HOUSE LATERALS FROM CHIMNEYS SHALL NOT HAVE AN ANGLE OF LESS THAN 45° WITH THE MAIN LINE SEWER. ANY CHANGE IN ALIGNMENT SHALL BE INDICATED IN WRITING BY THE PRIVATE ENGINEER.
- THE PRIVATE ENGINEER SHALL FURNISH THE HOUSE LATERAL BATHS AT THE PROPERTY LINE BELOW THE TOP OF CURB ELEVATION FOR EACH HOUSE LATERAL ON THE GRADE SHEET.
- BEFORE WORK CAN BE STARTED, THE CONTRACTOR MUST OBTAIN A PERMIT TO EXCAVATE IN COUNTY STREETS FROM THE L.A. COUNTY ROAD DEPT., DISTRICT OFFICE NO. 2, AND PAY A FEE TO THE COUNTY ENGINEER, 200 [Address] DISTRICT OFFICE NO. 2, REGIONAL OFFICE, TO COVER THE COST OF CONSTRUCTION INSPECTION AND RECORD PLANS.
- IF WORK IS TO BE DONE IN A STATE HIGHWAY, A PERMIT MUST BE OBTAINED FROM THE STATE OF CALIFORNIA, DIVISION OF HIGHWAYS, 120 SOUTH SHINING STREET, LOS ANGELES, CALIFORNIA.
- APPROVAL OF THIS PLAN BY THE COUNTY OF LOS ANGELES DOES NOT CONSTITUTE A REPRESENTATION AS TO THE ACCURACY OF THE LOCATION OF OR THE EXISTENCE OR NON-EXISTENCE OF ANY UNDERGROUND UTILITY PIPE OR STRUCTURE WITHIN THE LIMITS OF THE PROJECT. THIS NOTE APPLIES TO ALL PAGES.
- REFER TO SECTION 718.1.3 OF THE STANDARD SPECIFICATIONS, REGARDING SAFETY ORDERS.
- BEFORE THE ISSUANCE OF THE REQUIRED SEWER CONSTRUCTION PERMIT, THE CONTRACTOR SHALL OBTAIN AND FILE WITH THE COUNTY ENGINEER COPIES OF A PERMIT TO EXCAVATE IN COUNTY STREETS FROM THE LOS ANGELES COUNTY ROAD DEPARTMENT, A PERMIT FOR EXCAVATIONS AND REPAIRS FROM THE OFFICE OF CALIFORNIA DIVISION OF INDUSTRIAL SAFETY AND A CERTIFICATE OF WORKERS COMPENSATION INSURANCE WITH THE DEPARTMENT OF COUNTY ENGINEER, 200 SOUTH SHINING STREET, LOS ANGELES, CALIFORNIA. SUCH DOCUMENTS SHALL BE FILED WITH THE COUNTY ENGINEER'S OFFICE PRIOR TO CANCELLATION OF BOND.

CONSTRUCTION NOTES:

- WORK SHALL BE CONSTRUCTED ACCORDING TO THE STANDARD SPECIFICATIONS FOR PUBLIC WORKS CONSTRUCTION WITH SUPPLEMENT 1 AND COUNTY ENGINEER SPECIAL PROVISIONS FOR THE CONSTRUCTION OF SANITARY SEWERS DATE 8/1/78, AND SHALL BE PROSECUTED ONLY IN THE PRESENCE OF THE COUNTY ENGINEER.
- THE CONTRACTOR SHALL NOTIFY THE ENVIRONMENTAL DEVELOPMENT DIVISION BY TELEPHONE, 962-6636, AT LEAST TWENTY FOUR HOURS BEFORE STARTING ANY WORK UNDER THIS CONTRACT.
- HOUSE LATERALS TO BE CONSTRUCTED WITH INVERTS AT PROPERTY LINE 6 FEET BELOW CURB GRADE EXCEPT AS NOTED.
- TYPE OR THE BRANCHES MAY BE USED FOR CONNECTIONS TO MANHOLE SEWERS EXCEPT AS NOTED.
- ALL STRUCTURES SHALL BE BUILT IN ACCORDANCE WITH THE STANDARD SPECIFICATIONS PER 6-26, EXCEPT AS NOTED.
- PROVIDE STAKES ON THE PROPERTY LINE OR PROPERTY LINES PRODUCE AT RIGHT ANGLES TO THE SEWER LINE AT THE CENTER LINE OF EACH MANHOLE.
- MANHOLE TOPS IN UNIMPROVED PORTS OF WAY TO BE SIX INCHES ABOVE FINISHED GRADE.
- WITHIN CLAY PIPE JOINTS SHALL BE TYPE "T", "C" OR "S" PER STANDARD SPECIFICATIONS SECTION 306-2.
- IF A POWER POLE IS WITHIN THREE FEET OF THE SEWER, THE SEWER SHALL BE ENCASED PER 6-23, CASE 2, TWO FEET ON EACH SIDE FROM THE POINT OF INTERFERENCE.
- IF DURING THE COURSE OF CONSTRUCTION IT IS DETERMINED THAT THERE IS LESS THAN FOUR FEET OF COVER OVER THE TOP OF A MAIN LINE OF HOUSE LATERAL V.C.P. SEWER WHICH IS NOT ENCASED ON THE PLANS, THE PIPE SHALL BE ENCASED PER 6-23, CASE 2, UNLESS OTHERWISE APPROVED BY THE COUNTY ENGINEER.
- ALL JOINTS BETWEEN CAST IRON PIPE AND WITHIN CLAY PIPE SHALL BE MADE WITH A RUBBER JOINT TYPE "C" OR "T", WITH GASKETS IF NECESSARY PER STANDARD SPECIFICATIONS, SECTION 306-2.
- SEWERS TO BE TESTED FOR LEAKAGE PER SECTION 306-4.6 OF THE STANDARD SPECIFICATIONS AND SPECIAL PROVISIONS.
- RESURFACE ALL TRENCHES WITHIN PAVED AREAS TO MEET L.A. COUNTY ROAD DEPT. OR CALIFORNIA STATE HIGHWAY REQUIREMENTS IN ACCORDANCE WITH PERMITS.
- PER COMPLIANCE WITH SECTION 306-1.6 OF THE SPECIAL PROVISIONS WILL BE REQUIRED FOR BACKFILL IN STREETS. CERTIFICATION OF BACKFILL COMPACTION AND SAND EQUIVALENTS BY A QUALIFIED, REGISTERED TESTING LABORATORY SHALL BE PROVIDED BY THE PERMITTEE PRIOR TO THE ISSUANCE OF A CERTIFICATE OF FINAL ACCEPTANCE.



NO CHARGE FOR CONNECTIONS
DOUBLE SCALE

49064

BC 0134 1

SH

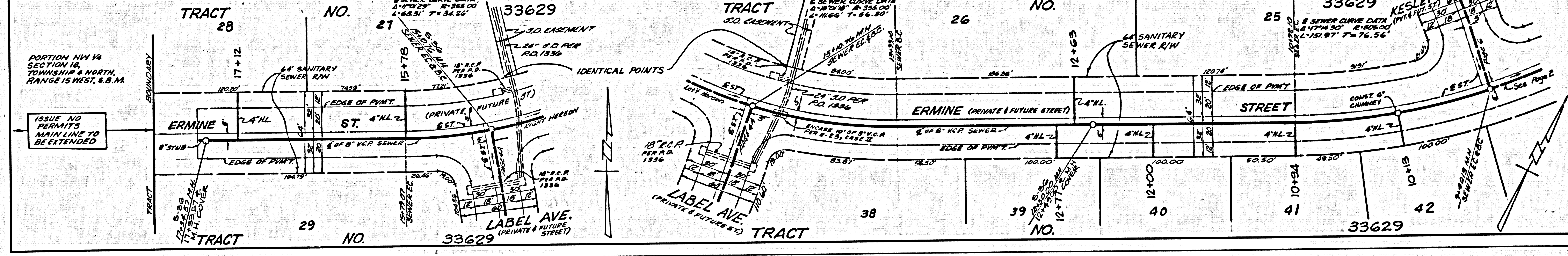
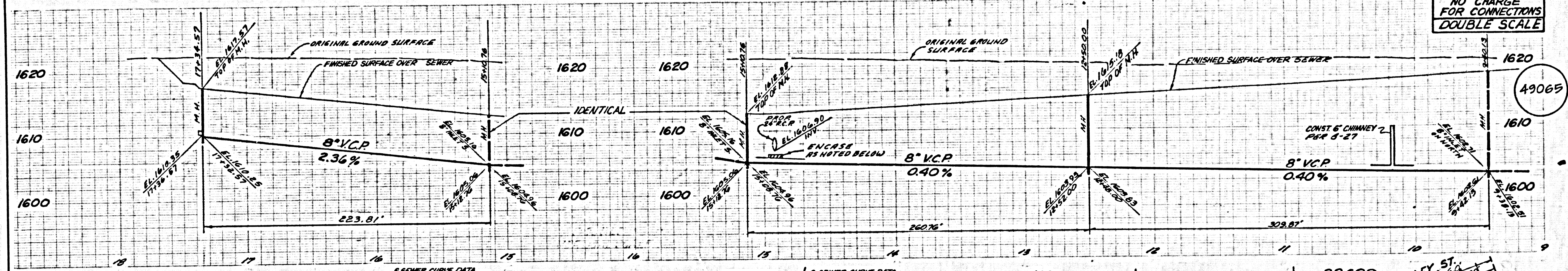
HB

HM

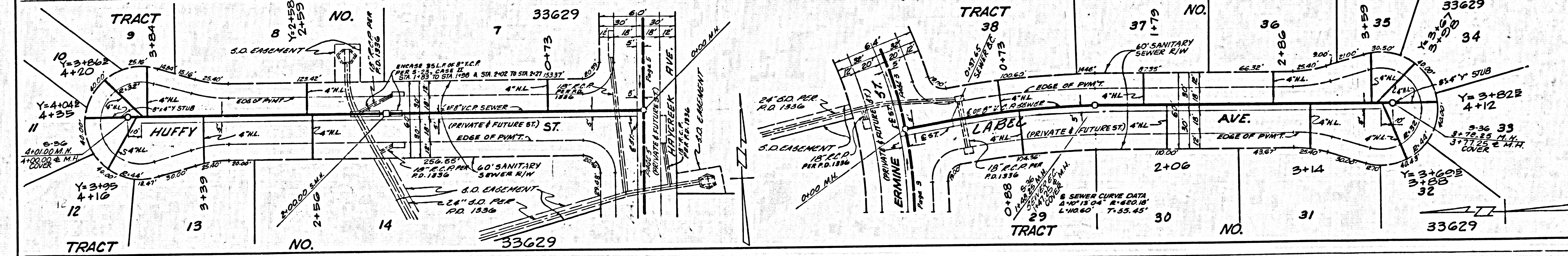
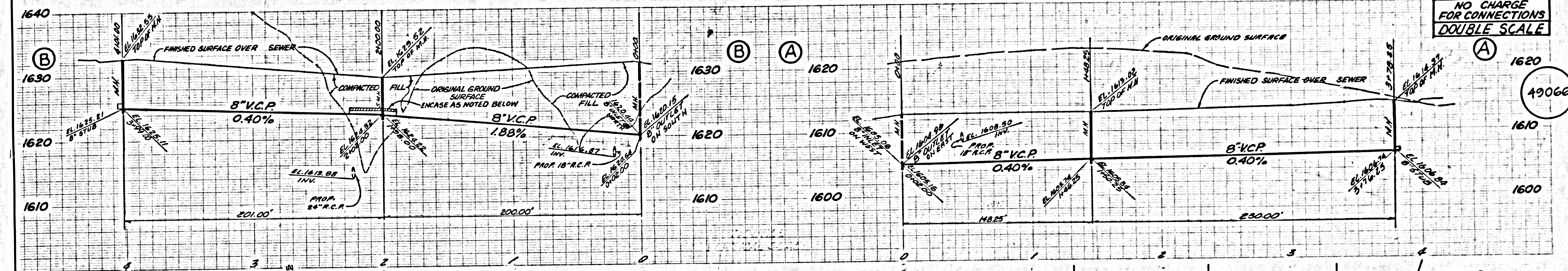
HY HB

SH 15'

NO CHARGE FOR CONNECTIONS DOUBLE SCALE



NO CHARGE FOR CONNECTIONS DOUBLE SCALE



NAE 17323 LA COUNTY SEWER SHEET NO. 2 SO. CAL. BLUEPRINT CO.

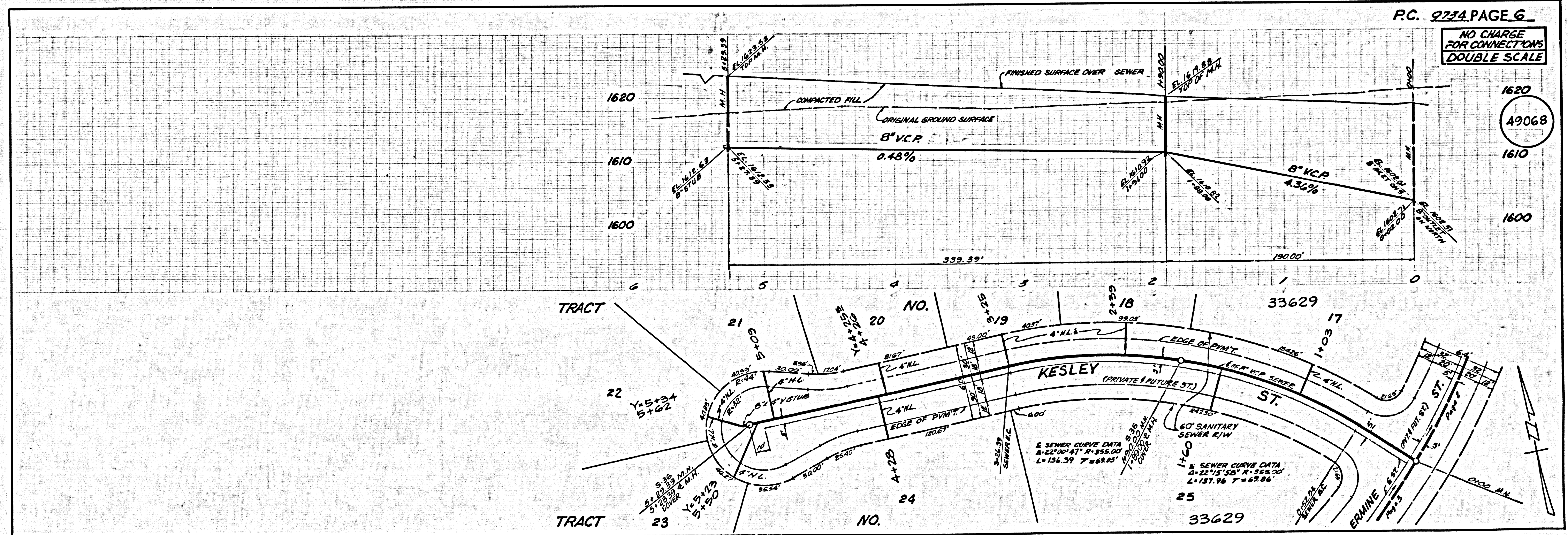
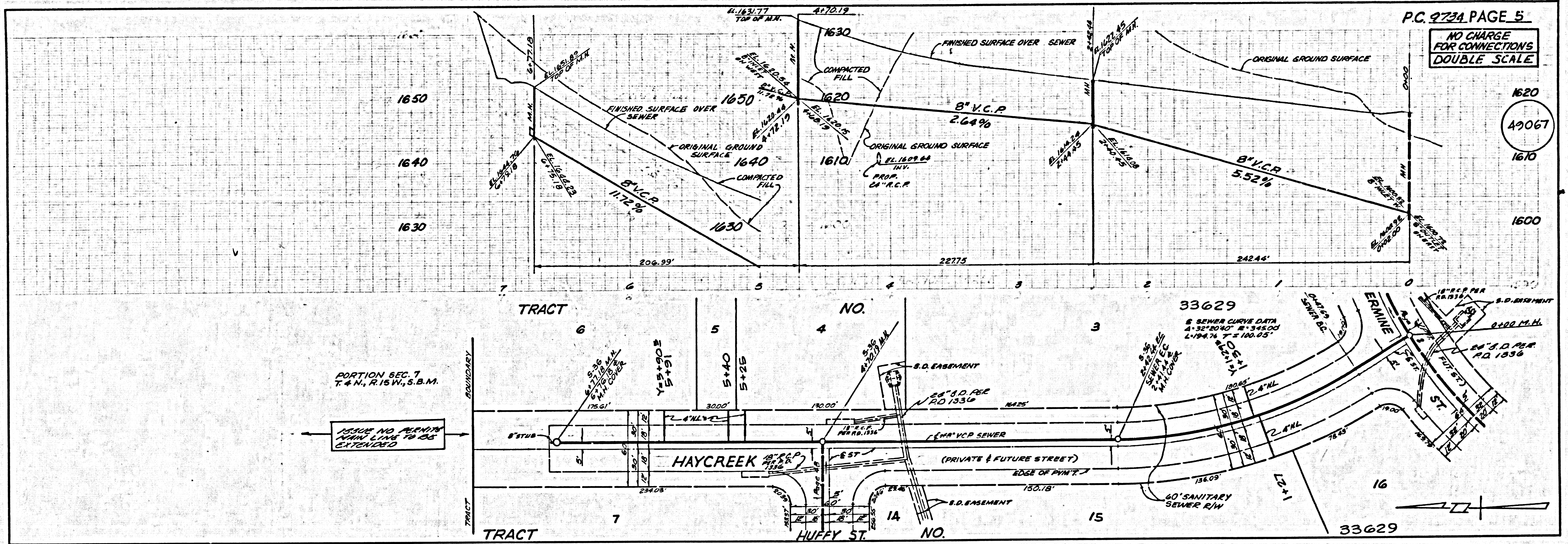
49065

49066

MB UM

NW HB

SH 15'



② 49067 97