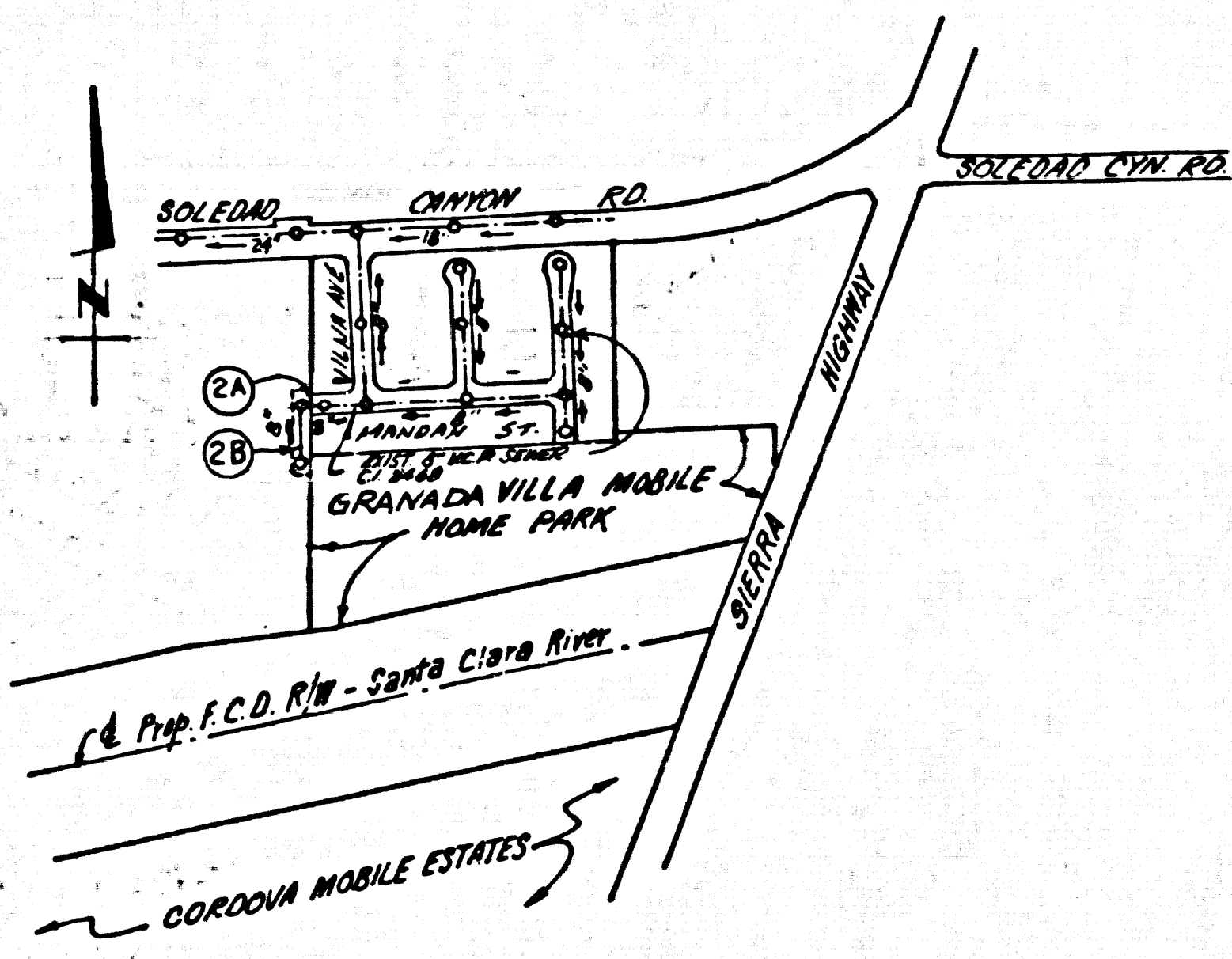


B.M. CL 3991 ELEV. 1409.000  
 RDBM TAG 3FT. E. BCR. 42 FT. S. &  
 57 FT. E. CL. INT. SOLEDAD CN. R. &  
 VILNA AVE.  
 NEWHALL QUAD. 197B.

**SPECIAL PROVISIONS IN EASEMENT CONSTRUCTION**  
 1. EXISTING TRENCH AND REFACE TO DEPTH 30 AS TO ACHIEVE THE ORIGINAL OR FINISHED GRADES AND SLOPES SHOWN ON THE GASOLINE CLEAN APPROVED AND THIS DEPARTMENT OF THE BUILDING AND SAFETY DIVISION.  
 2. ALL MANHOLE AND COVER REPLACES SHALL BE CONFORMED TO A MINIMUM OF 90% OF MAXIMUM DENSITY PER ASTM STANDARD METHOD OF TEST D 698-57T AS MODIFIED. ACCEPTABLE IDENTIFICATION OF SUCH CONSTRUCTION SHALL BE SUBMITTED TO THE ENVIRONMENTAL DEVELOPMENT DIVISION.



**INDEX-MAP**  
 SCALE: 1" = 600'  
 NUMBERS IN CIRCLES INDICATE PAGE NUMBERS

BEFORE BREAKING INTO OR CONSTRUCTION ON A PROPERTY IN AN UNINCORPORATED AREA, THE CONTRACTOR SHALL BE NOTIFIED BY PHONE 962-8000, SO THAT REQUIRED INSPECTION CAN BE MADE.  
 NO CONNECTION FOR THE DISPOSAL OF INDUSTRIAL WASTES SHALL BE MADE TO SEWERS SHOWN ON THESE DRAWINGS UNTIL A PERMIT FOR INDUSTRIAL WASTE WATER DISCHARGE HAS BEEN ISSUED BY THE SANITATION DISTRICTS FOR SAID CONNECTION.

**GENERAL NOTES:**

- ELEVATIONS ARE IN FEET ABOVE U.S.C. & G.S. SEA LEVEL DATUM OF 1929.
- NO ERECTIONS SHALL BE MADE ON THESE PLANS WITHOUT THE APPROVAL OF THE COUNTY ENGINEER.
- NO REPRESENTATIVE OF THE COUNTY ENGINEER WILL SURVEY OR LAY OUT ANY PORTION OF THE WORK.
- GRADES TO WHICH THIS IMPROVEMENT IS TO BE CONSTRUCTED ARE SHOWN ON PLANS AND PROFILES GRADE POINTS FOR TOP OF CURB, CENTER LINE OF STREETS, OR CENTER LINE OF ALLEYS ARE SHOWN BY CIRCLES ON PROFILES. AT ALL POINTS BETWEEN DESIGNATED POINTS THE GRADE SHALL BE ESTABLISHED SO AS TO CONFORM TO A STRAIGHT LINE DRAWN BETWEEN SAID DESIGNATED POINTS.
- THE PRIVATE ENGINEER SHALL FURNISH THE COUNTY ENGINEER WITH GRADE SHEETS AND STATIONING FOR ALL HOUSE LATERALS AND "T" OR "Y" BRANCHES AND SHALL PROVIDE EASES FOR THEM AT THEIR PROPER LOCATION WITH STATIONING PLAINLY MARKED. ALL HOUSE LATERALS SHALL BE CONSTRUCTED IN A STRAIGHT ALIGNMENT AT RIGHT ANGLES FROM THE MAIN LINE SEWER EXCEPT AS SHOWN ON THE PLANS. HOUSE LATERALS FROM CHIMNEYS SHALL NOT HAVE AN ANGLE OF LESS THAN 45° WITH THE MAIN LINE SEWER. ANY CHANGE IN ALIGNMENT SHALL BE REQUESTED IN WRITING BY THE PRIVATE ENGINEER.
- THE PRIVATE ENGINEER SHALL FURNISH THE HOUSE LATERAL DEPTH AT THE PROPERTY LINE BELOW THE TOP OF CURB ELEVATION FOR EACH HOUSE LATERAL ON THE HOUSE SHEET.
- BEFORE WORK CAN BE STARTED, THE CONTRACTOR MUST OBTAIN A PERMIT TO EXCAVATE IN COUNTY STREETS FROM THE L.A. COUNTY ROAD DEPT., DISTRICT OFFICE NO. 4, AND PAY A FEE TO THE COUNTY ENGINEER, 450 S. HERMONT AVE., LOS ANGELES, TO COVER THE COST OF CONSTRUCTION INSPECTION AND RECORD PLANS.
- IF WORK IS TO BE DONE ON A STATE HIGHWAY, A PERMIT MUST BE OBTAINED FROM THE STATE OF CALIFORNIA, DIVISION OF HIGHWAYS, 138 SOUTH SPRING STREET, LOS ANGELES, CALIFORNIA.
- APPROVAL OF THIS PLAN BY THE COUNTY OF LOS ANGELES DOES NOT CONSTITUTE A REPRESENTATION AS TO THE ACCURACY OF THE LOCATION OF OR THE EXISTENCE OR NON-EXISTENCE OF ANY UNDERGROUND UTILITY PIPE, OR STRUCTURE WITHIN THE LIMITS OF THIS PROJECT. THIS NOTE APPLIES TO ALL PAGES.
- REFER TO SECTION 7-18.1 OF THE STANDARD SPECIFICATIONS, REGARDING SAFETY DEVICES.
- BEFORE THE ISSUANCE OF THE APPROVED SEWER CONSTRUCTION PERMIT, THE CONTRACTOR SHALL OBTAIN FROM THE COUNTY ENGINEER COPIES OF A PERMIT TO EXCAVATE IN COUNTY STREETS, COVERING THE LOS ANGELES COUNTY DISTRICT OFFICE, 450 S. HERMONT AVE., LOS ANGELES, CALIFORNIA, AND THE COUNTY OF LOS ANGELES COUNTY ENGINEER'S OFFICE, 15230 BURBANK BLVD., VAN NUYS, CALIFORNIA 91411 (213) 787-8550. THIS PERMIT SHALL BE OBTAINED WITHIN THE PERMITTED SAFETY AND CERTIFICATION INSPECTION REQUIREMENTS WITHIN THE PERMITTED TIME PERIOD. THE CONTRACTOR SHALL BE NOTIFIED 30 DAYS PRIOR TO CANCELLATION OF PERMIT.

**CONSTRUCTION NOTES:**

- WORK SHALL BE CONSTRUCTED ACCORDING TO THE STANDARD SPECIFICATIONS FOR PUBLIC WORKS CONSTRUCTION (1979 EDITION) WITH THE SUPPLEMENTARY AND COUNTY ENGINEER SPECIAL PROVISIONS FOR THE CONSTRUCTION OF SANITARY SEWERS DATED 8/22/76.
- THE CONTRACTOR SHALL NOTIFY THE D.W. DIVISION BY TELEPHONE, 738-2556, AT LEAST TWENTY-FOUR HOURS BEFORE STARTING ANY WORK UNDER THIS CONTRACT.
- HOUSE LATERALS TO BE CONSTRUCTED WITH DIVERSITY AT PROPERTY LINE & FEET BELOW CURB GRADE EXCEPT AS NOTED.
- WYE OR TE BRANCHES MAY BE USED FOR CONNECTIONS TO MAINLINE SEWERS EXCEPT AS NOTED.
- ALL STRUCTURES SHALL BE WITHIN BRICK MANHOLES PER S-3, OR PRECAST CONCRETE MANHOLES PER S-3A, EXCEPT AS NOTED.
- PROVIDE EASES ON THE PROPERTY LINE OR PROPERTY LINES PRODUCED AT RIGHT ANGLES TO THE SEWER LINE AT THE CENTER LINE OF EACH MANHOLE.
- MANHOLE TOPS IN UNIMPROVED RIGHTS OF WAY TO BE SIX INCHES ABOVE FINISHED GRADE.
- VERTIFIED CLAY PIPE JOINTS SHALL BE TYPE "B", "C", OR "D" PER STANDARD SPECIFICATIONS SECTION 308-2.
- IF A POWER POLE IS WITHIN THREE FEET OF THE SEWER, THE SEWER SHALL BE ENCASED, PER S-23, CASE II, TWO FEET ON EACH SIDE FROM THE POINT OF INTERFERENCE.
- IF DURING THE COURSE OF CONSTRUCTION IT IS DETERMINED THAT THERE IS LESS THAN FOUR FEET OF COVER OVER THE TOP OF A MAIN LINE OR HOUSE LATERAL V.C.P. SEWER WHICH IS NOT INDICATED ON THE PLANS, THE PIPE SHALL BE ENCASED PER S-23, CASE II UNLESS OTHERWISE APPROVED BY THE COUNTY ENGINEER.
- ALL JOINTS BETWEEN CAST IRON PIPE AND VERTIFIED CLAY PIPE SHALL BE MADE WITH A RUBBER SLEEVE JOINT, TYPE "C" OR "D", FIFTH EDITION IF NECESSARY PER STANDARD SPECIFICATIONS, SECTION 308-2.
- SEWERS TO BE TESTED FOR LEAKAGE PER SECTION 308 F-8 OF THE STANDARD SPECIFICATIONS AND SPECIAL PROVISIONS.
- REPLACE ALL TRENCHES WITHIN PAVED AREAS TO MEET L.A. COUNTY ROAD DEPT. OR CALIFORNIA STATE HIGHWAY REQUIREMENTS BY ACCORDANCE WITH PERMITS.
- FULL COMPLIANCE WITH SECTION 308-1.3.2 OF THE SPECIAL PROVISIONS WILL BE REQUIRED FOR BACKFILL IN STREETS. CERTIFICATION OF BACKFILL COMPACTION AND SAND EQUIVALENTS BY A QUALIFIED REGISTERED TESTING LABORATORY SHALL BE PROVIDED BY THE PERMITTEE PRIOR TO THE ISSUANCE OF A CERTIFICATE OF PARTIAL ACCEPTANCE.

TO BE CONSTRUCTED IN  
**SANITARY SEWER RIGHT OF WAY  
 S/O MANDAN STREET  
 PRIVATE CONTRACT NO. 9737**

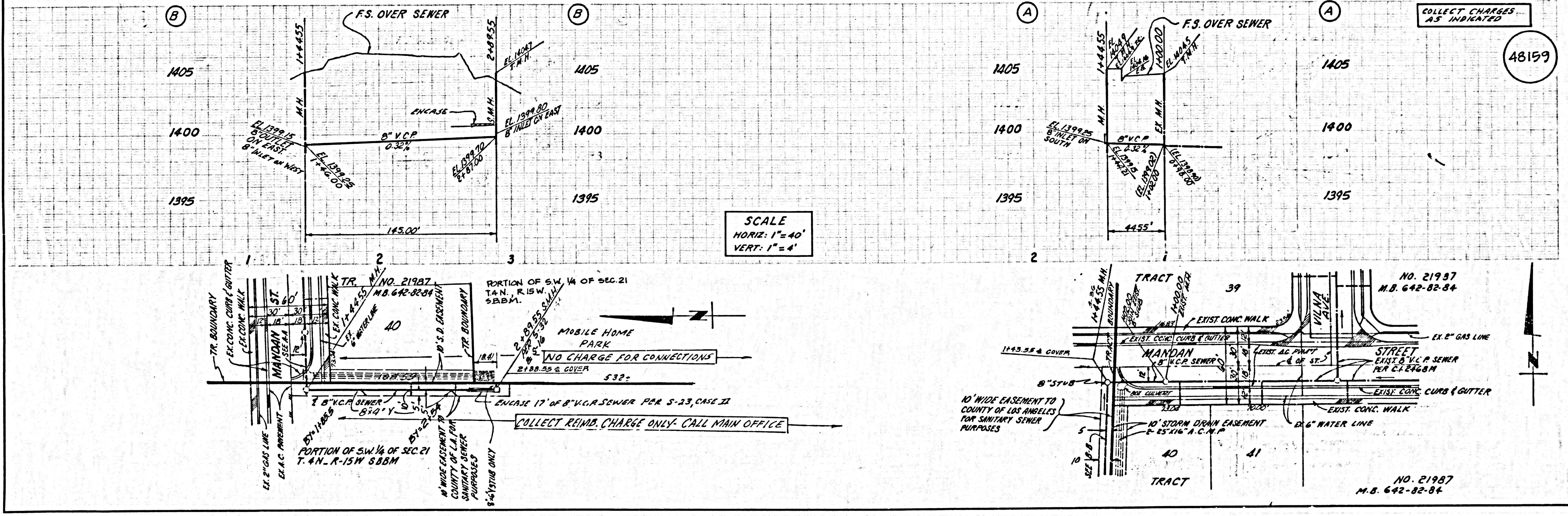
W.S. 62  
 1 SHEET, 2 PAGES  
 SCALE: HORIZ. 1" = 40' VERT. 1" = 4'  
 PREPARED IN THE OFFICES OF  
 SIKANO ENGINEERING ASSOCIATES  
 15230 BURBANK BLVD., VAN NUYS  
 CALIFORNIA 91411 (213) 787-8550  
 BY: Ronald R. Horn  
 REG. C. E. No. 16913

48158

THE FOLLOWING LATEST REVISED STANDARD PLANS ON FILE IN THE OFFICE OF THE COUNTY ENGINEER SHALL APPLY IN THE CONSTRUCTION OF THIS PROJECT:

SEWER	S-1
MINIMUM PERMISSIBLE REQUIREMENTS	S-2
BRICK MANHOLE	S-3
STANDARD MANHOLE STEP	S-3A
BRIDGING FOR SEWER PIPE	S-3B
CHASING AND ENCASING	S-3C
WYE OR TE SUPPORT	S-3D
ALLOWABLE TRENCH WIDTHS	S-3E
SOCKETED MANHOLE FRAME AND COVER	S-3F
NON-REINFORCED PRECAST CONCRETE MANHOLE	S-3G
SMALL-DIAMETER MANHOLE	S-3H
SMALL-DIAMETER CONCRETE MANHOLE	S-3I
SMALL-DIAMETER FRAME & COVER	S-3J

COUNTY OF LOS ANGELES, CALIFORNIA  
 STEPHEN J. ADKINS, COUNTY ENGINEER  
 APPROVED: Michael Murphy 3-26-80  
 CHECKED: Royce Davis 3/26/80  
 M.C. C.E. NO. 16883  
 SANTA CLARITA BLDG. DIST. 22



SCALE  
 HORIZ. 1" = 40'  
 VERT. 1" = 4'

48159