

TO BE CONSTRUCTED IN TRACT NO. 39750 PRIVATE CONTRACT NO. 9741 INDEX 2645153 W.S. 62 2 SHEETS, 4 PAGES

SCALE: VERT. 1"=8' HORIZ. 1"=40' PREPARED IN THE OFFICES OF McCUTCHEAN & ASSOCIATES, INC. 265 N. SAN GABRIEL BLVD., PASADENA, CALIF. BY: [Signature] REG. C. E. No. 14375

49176

- GENERAL NOTES: 1. ELEVATIONS ARE IN FEET ABOVE M.S.C. & S.A. SEA LEVEL DATUM OF 1929. 2. NO WORK SHALL BE DONE IN THESE PLANS WITHOUT THE APPROVAL OF THE COUNTY ENGINEER. 3. NO REPRESENTATIVE OF THE COUNTY ENGINEER WILL SURVEY OR LAY OUT ANY PORTION OF THE WORK. 4. GRADES TO WHICH THE IMPROVEMENT IS TO BE CONSTRUCTED ARE SHOWN ON PLANS AND PROFILES. GRADE POINTS FOR TOP OF CURB, CENTER LINE OF STREETS, OR CENTER LINE OF ALLEYS ARE SHOWN BY CIRCLES ON PROFILES. AT ALL POINTS BETWEEN SAID DESIGNATED POINTS THE GRADE SHALL BE ESTABLISHED SO AS TO CONFORM TO A STRAIGHT LINE BETWEEN SAID DESIGNATED POINTS. 5. THE PRIVATE ENGINEER SHALL FURNISH THE COUNTY ENGINEER WITH GRADE SHEETS AND STATIONING FOR ALL HOUSE LATERALS AND "12" OR "14" BRANCHES AND SHALL PROVIDE PLANS FOR THEM AT THEIR PROPER LOCATIONS WITH STATIONING PLAINLY MARKED. ALL HOUSE LATERALS SHALL BE CONSTRUCTED IN A STRAIGHT ALIGNMENT AT RIGHT ANGLES FROM THE MAIN LINE SEWER EXCEPT AS SHOWN ON THE PLANS. HOUSE LATERALS FROM CHIMNEYS SHALL NOT HAVE AN ANGLE OF LESS THAN 45° WITH THE MAIN LINE SEWER AND CHANGE IN ALIGNMENT SHALL BE REQUESTED IN WRITING BY THE PRIVATE ENGINEER. 6. THE PRIVATE ENGINEER SHALL PURCHASE THE HOUSE LATERAL DEPTH AT THE PER-FOOT LINE BELOW THE TOP OF CURB ELEVATION FOR EACH HOUSE LATERAL ON THE GRADE SHEET. 7. BEFORE WORK CAN BE STARTED, THE CONTRACTOR MUST OBTAIN A PERMIT TO EXCAVATE IN COUNTY STREETS FROM THE L.A. COUNTY ROAD DEPT., DISTRICT OFFICE NO. 7, AND PAY A FEE TO THE COUNTY ENGINEER, SEC. 8, WASHINGTON, D.C., L.A. COUNTY ROAD DEPT. TO COVER THE COST OF CONSTRUCTION INSPECTION AND RECORD PLANS. 8. IF WORK IS TO BE DONE ON A STATE HIGHWAY, A PERMIT MUST BE OBTAINED FROM THE STATE OF CALIFORNIA, DIVISION OF HIGHWAYS, 120 SOUTH SPRING STREET, LOS ANGELES, CALIFORNIA. 9. APPROVAL OF THIS PLAN BY THE COUNTY OF LOS ANGELES DOES NOT CONSTITUTE A REPRESENTATION AS TO THE ACCURACY OF THE LOCATION OF OR THE EXISTENCE OR NON-EXISTENCE OF ANY UNRECORDED UTILITY PIPE, OR STRUCTURE WITHIN THE LIMITS OF THIS PROJECT. THIS NOTE APPLIES TO ALL PAGES. 10. REFER TO SECTION 144.41 OF THE STANDARD SPECIFICATIONS REGARDING SAFETY OBJECTS. 11. PROTECT EXISTING UTILITIES AND STRUCTURES. THE CONTRACTOR SHALL OBTAIN A FILE WITH THE COUNTY ENGINEER'S OFFICE OF THE RECORDING SECTION, COUNTY ENGINEER, 265 N. SAN GABRIEL BLVD., PASADENA, CALIF. PRIOR TO THE COMMENCEMENT OF CONSTRUCTION. THE COUNTY ENGINEER SHALL BE ADVISED OF ANY CHANGES IN THE LOCATION OF UTILITIES OR STRUCTURES. THE CONTRACTOR SHALL BE RESPONSIBLE FOR THE PROTECTION OF ALL UTILITIES AND STRUCTURES. THE CONTRACTOR SHALL BE RESPONSIBLE FOR THE PROTECTION OF ALL UTILITIES AND STRUCTURES. 12. THE UNDERGROUND UTILITY CLAIMS WITHIN THE PERMIT AREA: A. SOUTHERN CALIFORNIA EDISON CO. 251-4010 B. SOUTHERN CALIFORNIA GAS CO. 251-8330 C. PUBLIC UTILITIES CO. 251-8330 D. SANTA CLARITA WATER CO. 251-2787

- CONSTRUCTION NOTES: 1. WORK SHALL BE CONSTRUCTED ACCORDING TO THE STANDARD SPECIFICATIONS FOR PUBLIC WORKS CONSTRUCTION 1978 EDITION WITH 1981 SUPPLEMENTS AND COUNTY ENGINEER'S SPECIAL PROVISIONS FOR THE CONSTRUCTION OF SANITARY SEWERS DATED SEPT. 21, 1978. 2. THE CONTRACTOR SHALL NOTIFY THE PUBLIC WORKS DIVISION BY TELEPHONE, 748-2868, AT LEAST SEVEN (7) HOURS BEFORE STARTING ANY WORK UNDER THIS CONTRACT. 3. HOUSE LATERALS TO BE CONSTRUCTED WITH BRIVETS AT PROPERTY LINE & FEET BELOW CURB GRADE EXCEPT AS NOTED. 4. WYE OR TE CONNECTIONS MAY BE USED FOR CONNECTIONS TO MAINLINE SEWERS EXCEPT AS NOTED. 5. ALL STRUCTURES SHALL BE EITHER BRICK MANHOLES PER 8-8 OR PRECAST CONCRETE MANHOLES PER 8-8.5, EXCEPT AS NOTED. 6. PROVIDE STAIRS ON THE PROPERTY LINE OR PROPERTY LINES PRODUCED AT RIGHT ANGLES TO THE SEWER LINE AT THE CENTER LINE OF EACH MANHOLE. 7. MANHOLE TOPS IN UNIMPROVED PORTS OF WAY TO BE SIX INCHES ABOVE FINISHED GRADE. 8. WITHIN CLAY PIPE JOINTS SHALL BE TYPE "B", "C", OR "D" PER STANDARD SPECIFICATIONS SECTION 306.2. 9. IF A POWER POLE IS WITHIN THREE FEET OF THE SEWER, THE SEWER SHALL BE ENCASED PER 8-5.2, CASE B, TWO FEET ON EACH SIDE FROM THE POINT OF INTERFERENCE. 10. IF DURING THE COURSE OF CONSTRUCTION IT IS DETERMINED THAT THERE IS LESS THAN FOUR FEET OF COVER OVER THE TOP OF A MAIN LINE OR HOUSE LATERAL V.C.P. SEWER WHICH IS NOT INDICATED ON THE PLANS, THE PIPE SHALL BE ENCASED PER 8-5.2, CASE B, UNLESS OTHERWISE APPROVED BY THE COUNTY ENGINEER. 11. ALL JOINTS BETWEEN CAST IRON PIPE AND WITHIN CLAY PIPE SHALL BE MADE WITH A RUBBER GASKET JOINT, TYPE "C" OR "D", WITHIN SUBURBS IF NECESSARY PER STANDARD SPECIFICATIONS, SECTION 306.2. 12. SEWERS TO BE TESTED FOR LEAKAGE PER SECTION 306.4.6 OF THE STANDARD SPECIFICATIONS AND SPECIAL PROVISIONS. 13. REPAIRS TO ALL BRIVETS WITHIN PAVED AREAS TO MEET L.A. COUNTY ROAD DEPT. OR CALIFORNIA STATE HIGHWAY REQUIREMENTS IN ACCORDANCE WITH PERMITS. 14. FULL COMPLIANCE WITH SECTION 306.1.8.B OF THE SPECIAL PROVISIONS WILL BE REQUIRED FOR BACKFILL IN STREET. CERTIFICATION OF SATELITE CONSTRUCTION AND SAID EQUIVALENTS BY A QUALIFIED, REGISTERED TESTING LABORATORY SHALL BE PROVIDED BY THE PERMITTEE PRIOR TO THE ISSUANCE OF A CERTIFICATE OF PARTIAL ACCEPTANCE.

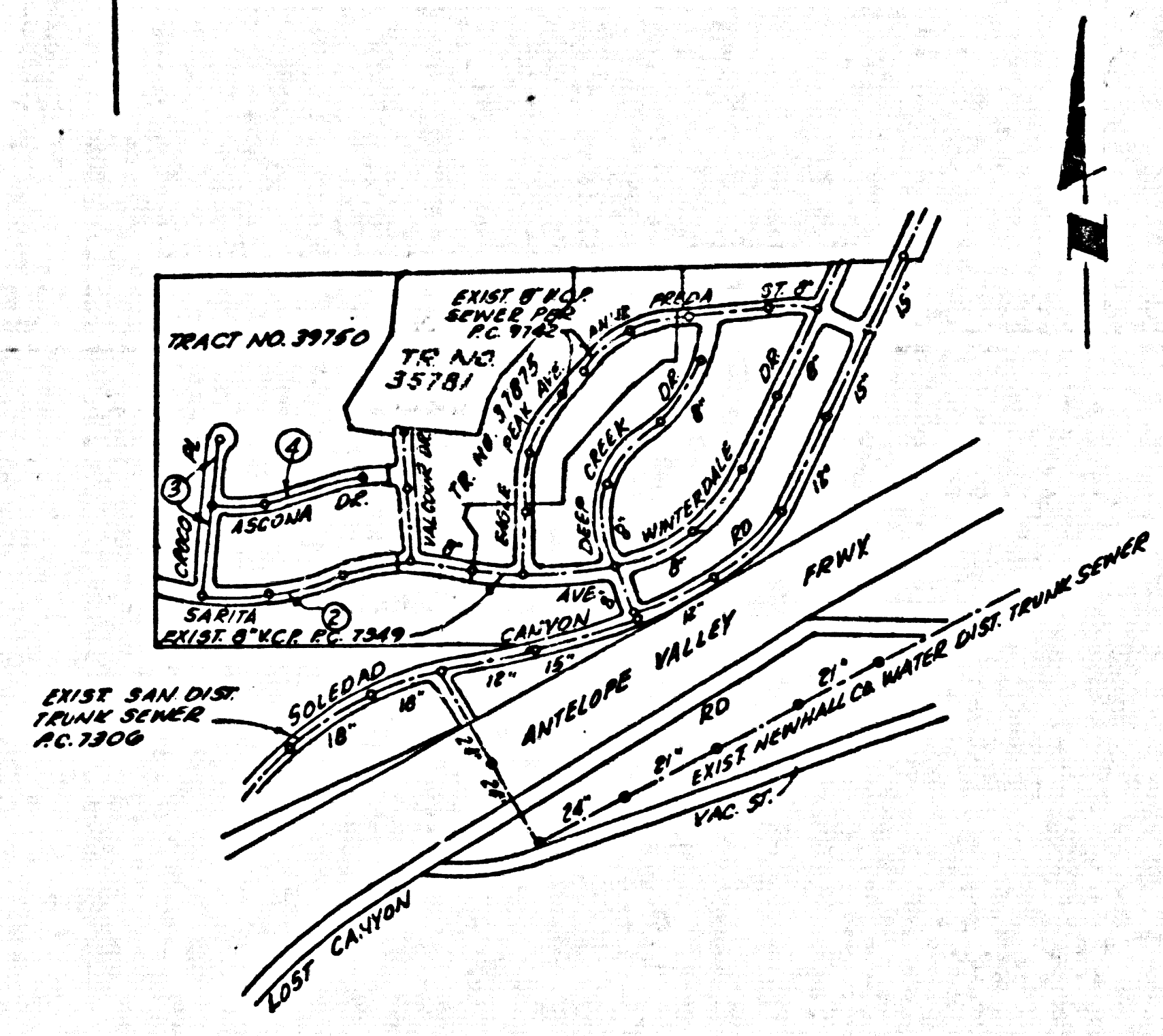
THE FOLLOWING LATEST REVISED STANDARD PLANS ON FILE IN THE OFFICE OF THE COUNTY ENGINEER SHALL APPLY IN THE CONSTRUCTION OF THIS PROJECT:

LOADING	8-7
MINIMUM PUBLIC SAFETY REQUIREMENTS	8-7
BRICK MANHOLES	8-7
STANDARD MANHOLE STEP	8-7
SEWERING FOR SEWER PIPE	8-7
CLEANING AND DEWATERING	8-7
WYE OR TE SUPPORT	8-7
ALLOYING TRENCH WITHE	8-7
LOCKING MANHOLE FRAME AND COVER	8-7
NON-REINFORCED PRECAST CONCRETE MANHOLES	8-7
RECTANGULAR SHALLOW MANHOLES	8-7
SHOULDER FOR HOUSE LATERALS	8-8

COUNTY OF LOS ANGELES, CALIFORNIA
STEPHEN J. KOONCE, COUNTY ENGINEER W.E. GARRISON, CHIEF ENGINEER
APPROVED: [Signature] 6/1/80 DATE [Signature] 6/1/80 DATE
CHECKED: [Signature] 6/1/80 DATE
REG. C. E. NO. 10652
SANTA CLARITA VALLEY BLDG. DIST. 8.2

DOUBLE SCALE

B.M. CL 4595 ELEV. 1501.716
LET IN CURB 4" C. OF B.C. OR NE COR.
OF SOLICITING CHIMNEY 22' 6" DEEP
CUTS ON 45° TO N. & APPROX. 6" W. OF
E. OF INTERSECTION.
NEWHALL QUAD. 19.73



REVISION No. 1 DATE 2-19-81
Re-alignment and raising of road and sewer grades on Croco Place and Ascano Drive affecting pages 3 and 4
Approved: [Signature]
Office of County Engr./R.E. No. 25559

NOTE: NUMBERS IN CIRCLES INDICATE PHOTO NUMBERS.

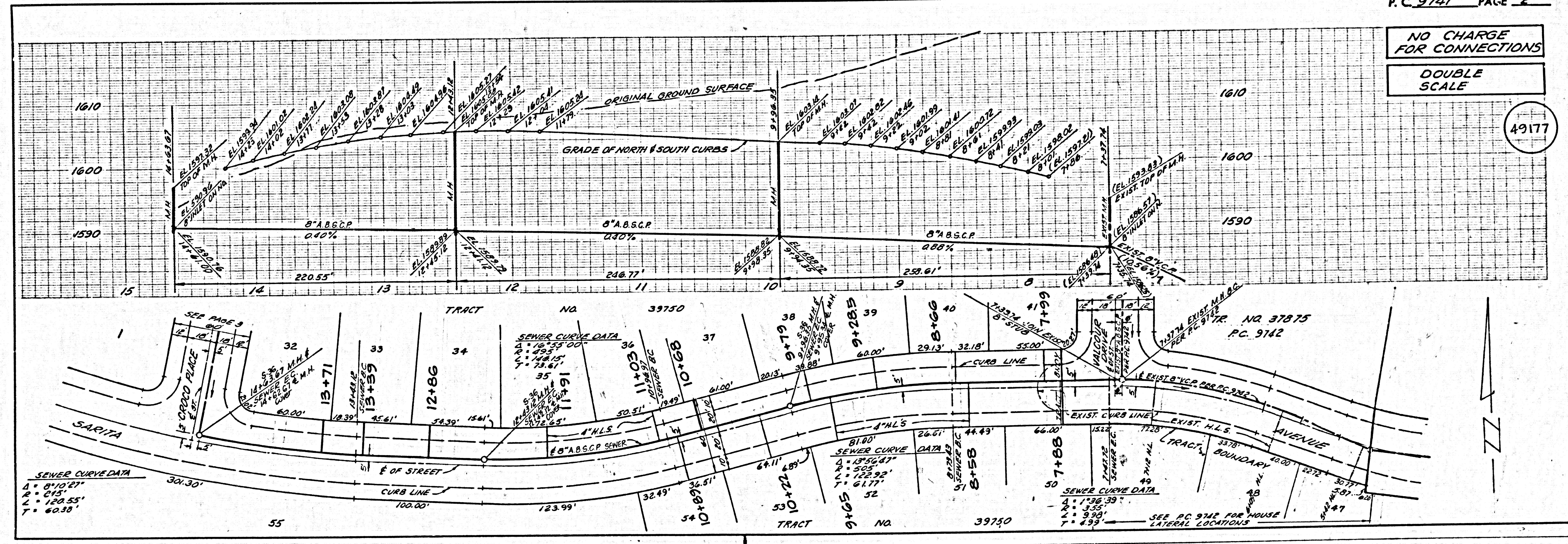
INDEX MAP
TRACT NO. 39750
SCALE: 1"=600'
P.C. 9741

NOTE: LOTS 47, 48 AND 49 OF TRACT NO. 39750 ARE SERVED BY P.C. 9742.

BEFORE BREAKING INTO OR CONSTRUCTION ON A COUNTY SANITATION DISTRICT SEWER AND PRIOR TO FINAL ACCEPTANCE OF THE PROJECT SANITATION DISTRICT INSPECTOR SHALL BE NOTIFIED BY PHONE 362-8945. SO THAT REQUIRED INSPECTION CAN BE MADE.
NO CONNECTION FOR THE DISPOSAL OF INDUSTRIAL WASTES SHALL BE MADE TO SEWERS SHOWN ON THESE DRAWINGS UNTIL A PERMIT FOR INDUSTRIAL WASTE WATER DISCHARGE HAS BEEN ISSUED BY THE SANITATION DISTRICTS FOR SAID CONNECTION.

NO CHARGE FOR CONNECTIONS
DOUBLE SCALE

49177



SA 15'

HB

HM

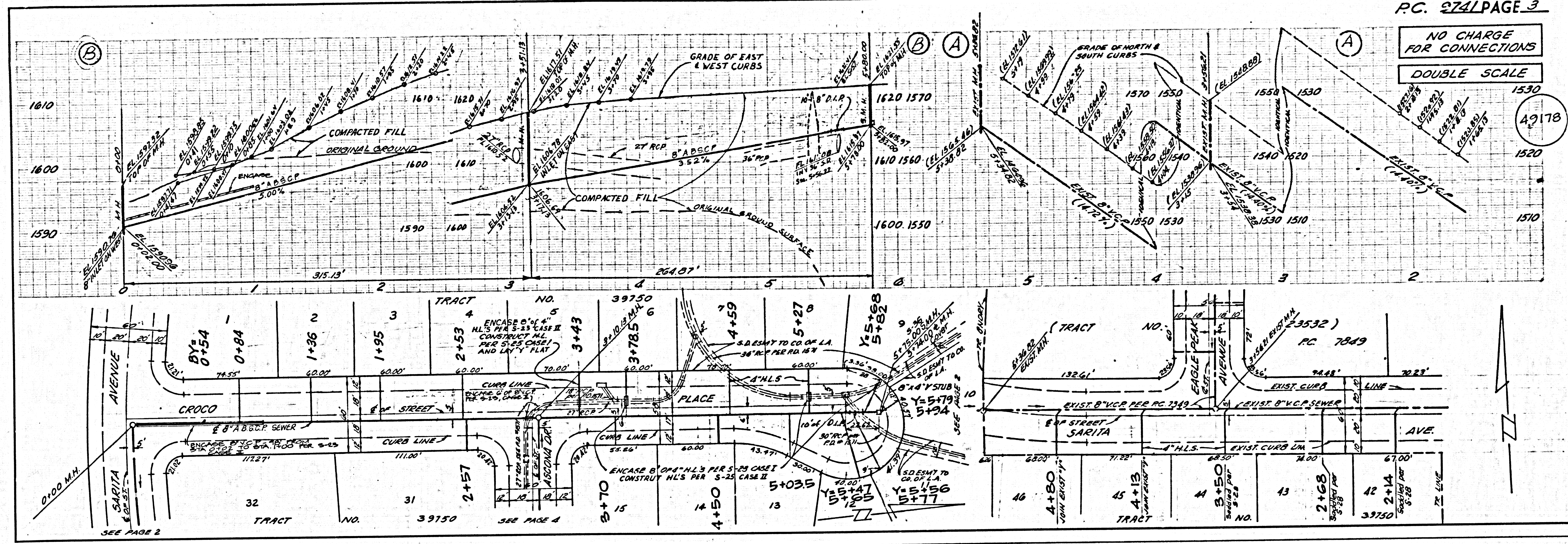
HW HB

SA 15'

NO CHARGE FOR CONNECTIONS

DOUBLE SCALE

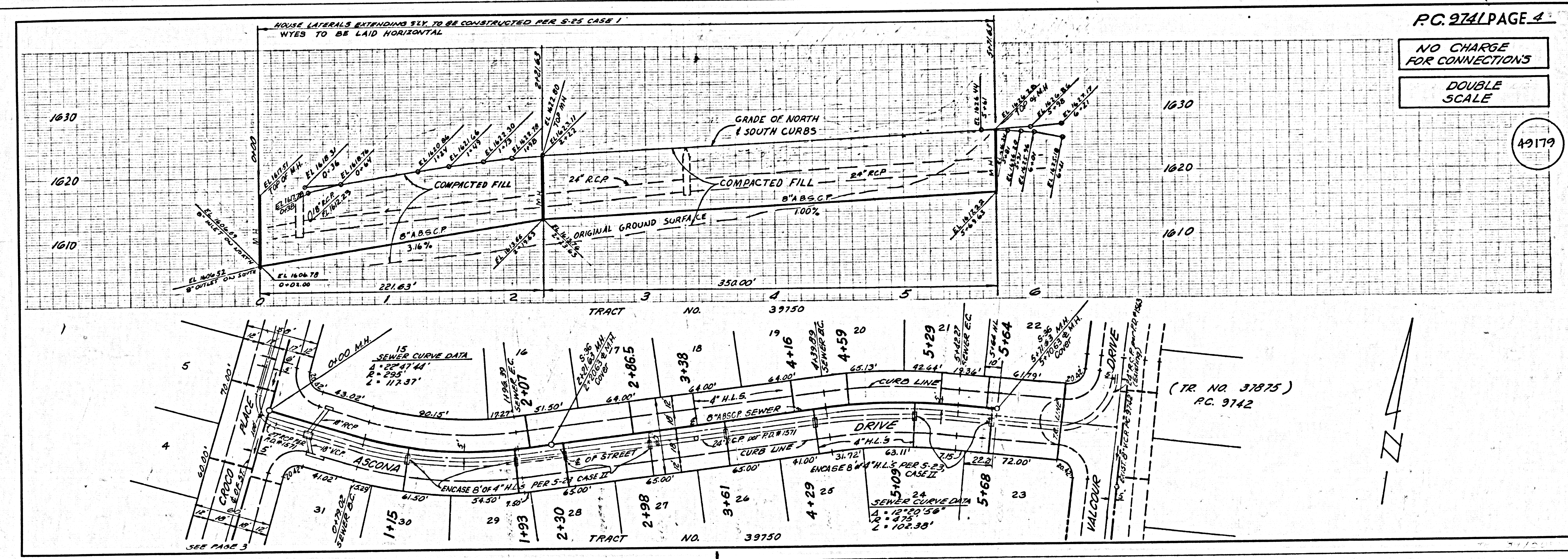
49178



NO CHARGE FOR CONNECTIONS

DOUBLE SCALE

49179



MB

HM

HM MB

SH 15'