

TO BE CONSTRUCTED IN
TRACT NO. 37875
PRIVATE CONTRACT NO. 9742

W.S. 62
2 SHEETS, 4 PAGES
SCALE: HORIZ. 1" = 40'
VERT. 1" = 4'
AUGUST, 1979
PREPARED IN THE OFFICES OF
MCCUTCHAN & ASSOCIATES, INC.
265 N. SAN GABRIEL BLVD., PASADENA, CALIF.
BY: *Frank E. Smith*
REG. C. E. NO. 14275

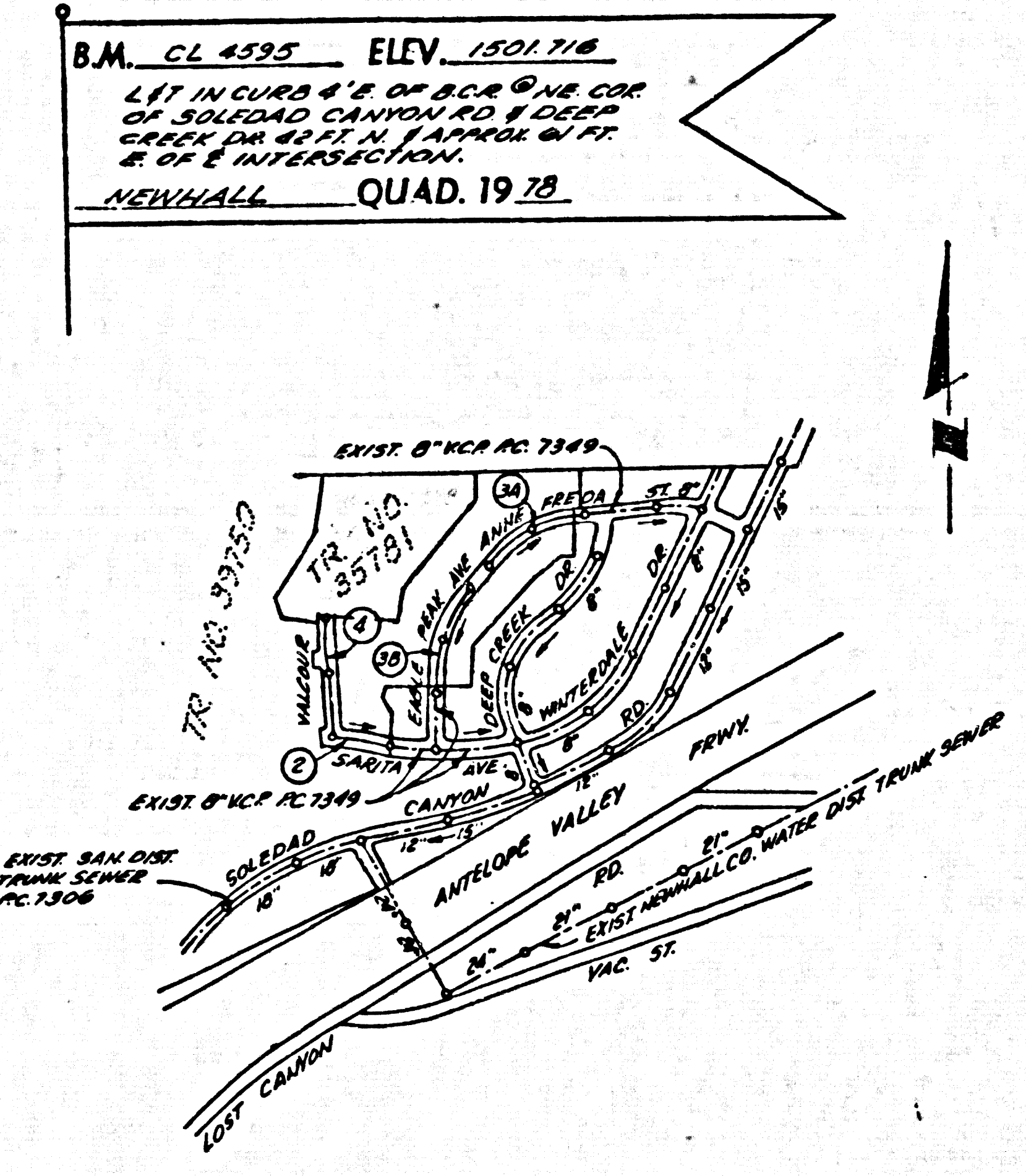
49186

THE FOLLOWING LATEST REVISED STANDARD PLANS ON FILE IN THE OFFICE OF THE COUNTY ENGINEER SHALL APPLY IN THE CONSTRUCTION OF THIS PROJECT.

MINIMUM PUBLIC SAFETY REQUIREMENTS	5-1
MINIMUM PUBLIC SAFETY REQUIREMENTS	5-2
MINIMUM PUBLIC SAFETY REQUIREMENTS	5-3
MINIMUM PUBLIC SAFETY REQUIREMENTS	5-4
MINIMUM PUBLIC SAFETY REQUIREMENTS	5-5
MINIMUM PUBLIC SAFETY REQUIREMENTS	5-6
MINIMUM PUBLIC SAFETY REQUIREMENTS	5-7
MINIMUM PUBLIC SAFETY REQUIREMENTS	5-8
MINIMUM PUBLIC SAFETY REQUIREMENTS	5-9
MINIMUM PUBLIC SAFETY REQUIREMENTS	5-10
MINIMUM PUBLIC SAFETY REQUIREMENTS	5-11
MINIMUM PUBLIC SAFETY REQUIREMENTS	5-12
MINIMUM PUBLIC SAFETY REQUIREMENTS	5-13
MINIMUM PUBLIC SAFETY REQUIREMENTS	5-14
MINIMUM PUBLIC SAFETY REQUIREMENTS	5-15
MINIMUM PUBLIC SAFETY REQUIREMENTS	5-16
MINIMUM PUBLIC SAFETY REQUIREMENTS	5-17
MINIMUM PUBLIC SAFETY REQUIREMENTS	5-18
MINIMUM PUBLIC SAFETY REQUIREMENTS	5-19
MINIMUM PUBLIC SAFETY REQUIREMENTS	5-20
MINIMUM PUBLIC SAFETY REQUIREMENTS	5-21
MINIMUM PUBLIC SAFETY REQUIREMENTS	5-22
MINIMUM PUBLIC SAFETY REQUIREMENTS	5-23
MINIMUM PUBLIC SAFETY REQUIREMENTS	5-24
MINIMUM PUBLIC SAFETY REQUIREMENTS	5-25
MINIMUM PUBLIC SAFETY REQUIREMENTS	5-26
MINIMUM PUBLIC SAFETY REQUIREMENTS	5-27
MINIMUM PUBLIC SAFETY REQUIREMENTS	5-28
MINIMUM PUBLIC SAFETY REQUIREMENTS	5-29
MINIMUM PUBLIC SAFETY REQUIREMENTS	5-30
MINIMUM PUBLIC SAFETY REQUIREMENTS	5-31
MINIMUM PUBLIC SAFETY REQUIREMENTS	5-32
MINIMUM PUBLIC SAFETY REQUIREMENTS	5-33
MINIMUM PUBLIC SAFETY REQUIREMENTS	5-34
MINIMUM PUBLIC SAFETY REQUIREMENTS	5-35
MINIMUM PUBLIC SAFETY REQUIREMENTS	5-36
MINIMUM PUBLIC SAFETY REQUIREMENTS	5-37
MINIMUM PUBLIC SAFETY REQUIREMENTS	5-38
MINIMUM PUBLIC SAFETY REQUIREMENTS	5-39
MINIMUM PUBLIC SAFETY REQUIREMENTS	5-40
MINIMUM PUBLIC SAFETY REQUIREMENTS	5-41
MINIMUM PUBLIC SAFETY REQUIREMENTS	5-42
MINIMUM PUBLIC SAFETY REQUIREMENTS	5-43
MINIMUM PUBLIC SAFETY REQUIREMENTS	5-44
MINIMUM PUBLIC SAFETY REQUIREMENTS	5-45
MINIMUM PUBLIC SAFETY REQUIREMENTS	5-46
MINIMUM PUBLIC SAFETY REQUIREMENTS	5-47
MINIMUM PUBLIC SAFETY REQUIREMENTS	5-48
MINIMUM PUBLIC SAFETY REQUIREMENTS	5-49
MINIMUM PUBLIC SAFETY REQUIREMENTS	5-50
MINIMUM PUBLIC SAFETY REQUIREMENTS	5-51
MINIMUM PUBLIC SAFETY REQUIREMENTS	5-52
MINIMUM PUBLIC SAFETY REQUIREMENTS	5-53
MINIMUM PUBLIC SAFETY REQUIREMENTS	5-54
MINIMUM PUBLIC SAFETY REQUIREMENTS	5-55
MINIMUM PUBLIC SAFETY REQUIREMENTS	5-56
MINIMUM PUBLIC SAFETY REQUIREMENTS	5-57
MINIMUM PUBLIC SAFETY REQUIREMENTS	5-58
MINIMUM PUBLIC SAFETY REQUIREMENTS	5-59
MINIMUM PUBLIC SAFETY REQUIREMENTS	5-60
MINIMUM PUBLIC SAFETY REQUIREMENTS	5-61
MINIMUM PUBLIC SAFETY REQUIREMENTS	5-62
MINIMUM PUBLIC SAFETY REQUIREMENTS	5-63
MINIMUM PUBLIC SAFETY REQUIREMENTS	5-64
MINIMUM PUBLIC SAFETY REQUIREMENTS	5-65
MINIMUM PUBLIC SAFETY REQUIREMENTS	5-66
MINIMUM PUBLIC SAFETY REQUIREMENTS	5-67
MINIMUM PUBLIC SAFETY REQUIREMENTS	5-68
MINIMUM PUBLIC SAFETY REQUIREMENTS	5-69
MINIMUM PUBLIC SAFETY REQUIREMENTS	5-70
MINIMUM PUBLIC SAFETY REQUIREMENTS	5-71
MINIMUM PUBLIC SAFETY REQUIREMENTS	5-72
MINIMUM PUBLIC SAFETY REQUIREMENTS	5-73
MINIMUM PUBLIC SAFETY REQUIREMENTS	5-74
MINIMUM PUBLIC SAFETY REQUIREMENTS	5-75
MINIMUM PUBLIC SAFETY REQUIREMENTS	5-76
MINIMUM PUBLIC SAFETY REQUIREMENTS	5-77
MINIMUM PUBLIC SAFETY REQUIREMENTS	5-78
MINIMUM PUBLIC SAFETY REQUIREMENTS	5-79
MINIMUM PUBLIC SAFETY REQUIREMENTS	5-80
MINIMUM PUBLIC SAFETY REQUIREMENTS	5-81
MINIMUM PUBLIC SAFETY REQUIREMENTS	5-82
MINIMUM PUBLIC SAFETY REQUIREMENTS	5-83
MINIMUM PUBLIC SAFETY REQUIREMENTS	5-84
MINIMUM PUBLIC SAFETY REQUIREMENTS	5-85
MINIMUM PUBLIC SAFETY REQUIREMENTS	5-86
MINIMUM PUBLIC SAFETY REQUIREMENTS	5-87
MINIMUM PUBLIC SAFETY REQUIREMENTS	5-88
MINIMUM PUBLIC SAFETY REQUIREMENTS	5-89
MINIMUM PUBLIC SAFETY REQUIREMENTS	5-90
MINIMUM PUBLIC SAFETY REQUIREMENTS	5-91
MINIMUM PUBLIC SAFETY REQUIREMENTS	5-92
MINIMUM PUBLIC SAFETY REQUIREMENTS	5-93
MINIMUM PUBLIC SAFETY REQUIREMENTS	5-94
MINIMUM PUBLIC SAFETY REQUIREMENTS	5-95
MINIMUM PUBLIC SAFETY REQUIREMENTS	5-96
MINIMUM PUBLIC SAFETY REQUIREMENTS	5-97
MINIMUM PUBLIC SAFETY REQUIREMENTS	5-98
MINIMUM PUBLIC SAFETY REQUIREMENTS	5-99
MINIMUM PUBLIC SAFETY REQUIREMENTS	5-100

- GENERAL NOTES:**
- ELEVATIONS ARE IN FEET ABOVE M.S.C. & G.S. SEA LEVEL DATUM OF 1929.
 - NO REVISIONS SHALL BE MADE IN THESE PLANS WITHOUT THE APPROVAL OF THE COUNTY ENGINEER.
 - NO REPRESENTATIVE OF THE COUNTY ENGINEER WILL BE PRESENT ON THE JOB AT ANY PORTION OF THE WORK.
 - GRADES TO WHICH THE IMPROVEMENT IS TO BE CONSTRUCTED ARE SHOWN ON PLANS AND PROFILES. GRADE POINTS FOR TOP OF CURBS, CENTER LINE OF STREETS, OR CENTER LINE OF ALLEYS AT ALL POINTS BETWEEN DESIGNATED POINTS THE GRADE SHALL BE ESTABLISHED SO AS TO CONFORM TO A STRAIGHT LINE DRAWN BETWEEN SAID DESIGNATED POINTS.
 - THE PRIVATE ENGINEER SHALL FURNISH THE COUNTY ENGINEER WITH GRADE SHEETS AND STATIONING FOR ALL HOUSE LATERALS AND "T" OR "Y" MANHOLES AND SHALL PROVIDE STAKES FOR THEM AT THEIR PROPER LOCATIONS WITH STATIONING PLAINLY MARKED. ALL HOUSE LATERALS SHALL BE CONSTRUCTED IN A STRAIGHT ALIGNMENT AT RIGHT ANGLES FROM THE MAIN LINE SEWER EXCEPT AS SHOWN ON THE PLANS. HOUSE LATERALS FROM CHIMNEYS SHALL NOT HAVE AN ANGLE OF LESS THAN 45° WITH THE MAIN LINE SEWER. ANY CHANGE IN ALIGNMENT SHALL BE REQUESTED BY WRITING BY THE PRIVATE ENGINEER.
 - THE PRIVATE ENGINEER SHALL FURNISH THE HOUSE LATERAL STAKES AT THE PROPERTY LINE BELOW THE TOP OF CURB ELEVATION FOR EACH HOUSE LATERAL ON THE GRADE SHEET.
 - BEFORE WORK CAN BE STARTED, THE CONTRACTOR MUST OBTAIN A PERMIT TO EXCAVATE IN COUNTY STREETS FROM THE L.A. COUNTY ROAD DEPT., DISTRICT OFFICE NO. 5, AND PAY A FEE TO THE COUNTY ENGINEER, 350 S. MERRIMAN AVE., L.A. FROM 400, TO COVER THE COST OF CONSTRUCTION INSPECTION AND RECORD PLANS.
 - IF WORK IS TO BE DONE IN A STATE HIGHWAY, A PERMIT MUST BE OBTAINED FROM THE STATE OF CALIFORNIA, DIVISION OF HIGHWAYS, 126 SOUTH SPRING STREET, LOS ANGELES, CALIFORNIA.
 - APPROVAL OF THIS PLAN BY THE COUNTY OF LOS ANGELES DOES NOT CONSTITUTE A REPRESENTATION AS TO THE ACCURACY OF THE LOCATION OF OR THE EXISTENCE OR NON-EXISTENCE OF ANY UNDERGROUND UTILITY PIPE, OR STRUCTURE WITHIN THE LIMITS OF THE PROJECT. THIS NOTE APPLIES TO ALL PAGES.
 - REFER TO SECTION 7.18.4.1 OF THE STANDARD SPECIFICATIONS INCLUDING LATEST ORDINANCES.
 - THE CONTRACTOR SHALL BE RESPONSIBLE FOR OBTAINING ALL NECESSARY PERMITS FROM THE LOCAL AGENCIES AND SHALL BE RESPONSIBLE FOR THE COST OF SUCH PERMITS. THE CONTRACTOR SHALL OBTAIN A PERMIT TO EXCAVATE IN COUNTY STREETS FROM THE L.A. COUNTY ROAD DEPT., DISTRICT OFFICE NO. 5, AND PAY A FEE TO THE COUNTY ENGINEER, 350 S. MERRIMAN AVE., L.A. FROM 400, TO COVER THE COST OF CONSTRUCTION INSPECTION AND RECORD PLANS. THE CONTRACTOR SHALL OBTAIN A PERMIT TO EXCAVATE IN STATE HIGHWAYS FROM THE STATE OF CALIFORNIA, DIVISION OF HIGHWAYS, 126 SOUTH SPRING STREET, LOS ANGELES, CALIFORNIA. THE CONTRACTOR SHALL OBTAIN A PERMIT TO EXCAVATE IN FEDERAL HIGHWAYS FROM THE FEDERAL BUREAU OF INVESTIGATION, 400 NORTH BRIDGES AVENUE, PASADENA, CALIFORNIA. THE CONTRACTOR SHALL OBTAIN A PERMIT TO EXCAVATE IN AIRPORTS FROM THE FEDERAL BUREAU OF INVESTIGATION, 400 NORTH BRIDGES AVENUE, PASADENA, CALIFORNIA. THE CONTRACTOR SHALL OBTAIN A PERMIT TO EXCAVATE IN RAILROADS FROM THE FEDERAL BUREAU OF INVESTIGATION, 400 NORTH BRIDGES AVENUE, PASADENA, CALIFORNIA. THE CONTRACTOR SHALL OBTAIN A PERMIT TO EXCAVATE IN UTILITIES FROM THE FEDERAL BUREAU OF INVESTIGATION, 400 NORTH BRIDGES AVENUE, PASADENA, CALIFORNIA. THE CONTRACTOR SHALL OBTAIN A PERMIT TO EXCAVATE IN TELEPHONE LINES FROM THE FEDERAL BUREAU OF INVESTIGATION, 400 NORTH BRIDGES AVENUE, PASADENA, CALIFORNIA. THE CONTRACTOR SHALL OBTAIN A PERMIT TO EXCAVATE IN GAS LINES FROM THE FEDERAL BUREAU OF INVESTIGATION, 400 NORTH BRIDGES AVENUE, PASADENA, CALIFORNIA. THE CONTRACTOR SHALL OBTAIN A PERMIT TO EXCAVATE IN WATER LINES FROM THE FEDERAL BUREAU OF INVESTIGATION, 400 NORTH BRIDGES AVENUE, PASADENA, CALIFORNIA. THE CONTRACTOR SHALL OBTAIN A PERMIT TO EXCAVATE IN ALL OTHER UTILITIES FROM THE FEDERAL BUREAU OF INVESTIGATION, 400 NORTH BRIDGES AVENUE, PASADENA, CALIFORNIA.
 - THE UNDERGROUND UTILITY COMPANIES WITHIN THE PROJECT ARE:
 - SOUTHERN CALIFORNIA EDISON CO. 257-4020
 - SOUTHERN CALIFORNIA GAS CO. 257-8330
 - PACIFIC TELEPHONE CO. 257-3111
 - SANTA CLARITA WATER DIST. 257-2121

DOUBLE SCALE



REVISION NO. 1 DATE: 10-21-80
 Re-alignment and lowering of road and sewer grades on Valcour Drive affecting page 4 only.
 Approved: *Ralph D. Smith* 11/21/80
 Office of County Engineer / R.E. No. 16193

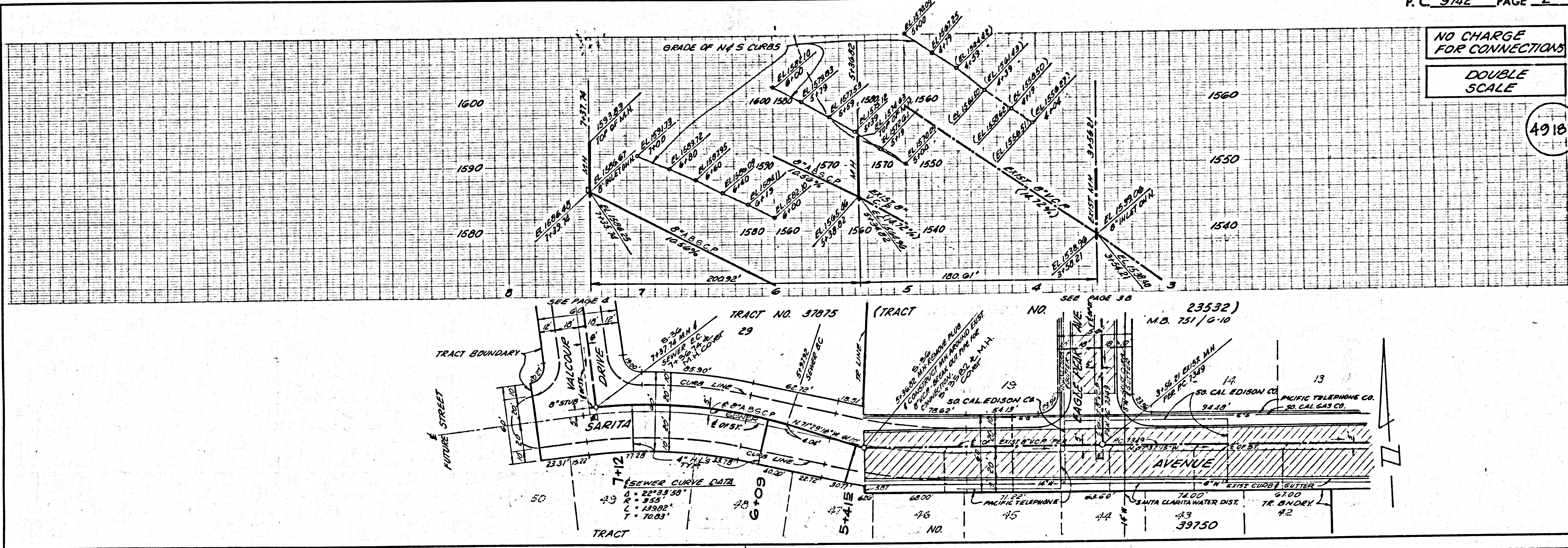
NOTE:
 NUMBERS IN CIRCLES INDICATE PAGE NUMBERS.

INDEX MAP
 TRACT NO. 37875
 SCALE: 1" = 600'
 P.C. 9742

BEFORE BREAKING INTO OR CONSTRUCTION ON A COUNTY SANITATION DISTRICT SEWER AND PRIOR TO FINAL ACCEPTANCE OF THE PROJECT SANITATION DISTRICT INSPECTOR SHALL BE NOTIFIED BY PHONE NO. 262-8600, SO THAT REQUIRED INSPECTION CAN BE MADE.

NO CONNECTION FOR THE DISPOSAL OF INDUSTRIAL WASTES SHALL BE MADE TO TRENCHES SHOWN ON THESE DRAWINGS UNLESS A PERMIT FOR INDUSTRIAL WASTE WATER DISCHARGE HAS BEEN ISSUED BY THE SANITATION DISTRICT FOR SAID CONNECTION.

- CONSTRUCTION NOTES:**
- WORK SHALL BE CONSTRUCTED ACCORDING TO THE STANDARD SPECIFICATIONS FOR PUBLIC WORKS CONSTRUCTION (1978 EDITION) WITH SUPPLEMENT AND COUNTY ENGINEER SPECIAL PROVISIONS FOR THE CONSTRUCTION OF SANITARY SEWERS DATED SEPTEMBER 1978. LINES SHALL BE PROTECTED ONLY IN THE PRESENCE OF THE COUNTY ENGINEER.
 - THE CONTRACTOR SHALL NOTIFY THE CITY ENGINEER BY TELEPHONE, 758-2128 AT LEAST TWENTY-FOUR HOURS BEFORE STARTING ANY WORK UNDER THIS CONTRACT.
 - HOUSE LATERALS TO BE CONSTRUCTED WITH INVERTS AT PROPERTY LINE & FEET BELOW CURB GRADE EXCEPT AS NOTED.
 - PIPE OR THE MANHOLES MAY BE USED FOR CONNECTIONS TO MAINLINE SEWERS EXCEPT AS NOTED.
 - ALL STRUCTURES SHALL BE EITHER BRICK MANHOLES PER S-2 OR PRECAST CONCRETE MANHOLES PER S-2A, EXCEPT AS NOTED.
 - PROVIDE STAKES ON THE PROPERTY LINE OR PROPERTY LINES PRODUCED AT RIGHT ANGLES TO THE SEWER LINE AT THE CENTER LINE OF EACH MANHOLE.
 - MANHOLES TOPS IN UNIMPROVED RIGHTS OF WAY 20 FEET OR MORE ABOVE FINISHED GRADE.
 - VERTICAL CURVE JOINTS SHALL BE TYPE "B", "C" OR "D" PER STANDARD SPECIFICATIONS SECTION 306-2.
 - IF A POWER POLE IS WITHIN THREE FEET OF THE SEWER, THE SEWER SHALL BE ENCASED, PER S-23, CASE II, TWO FEET ON EACH SIDE FROM THE POINT OF INTERFERENCE.
 - IF DURING THE COURSE OF CONSTRUCTION IT IS DETERMINED THAT THERE IS LESS THAN FOUR FEET OF COVER OVER THE TOP OF A MAIN LINE OR HOUSE LATERAL V.C. SEWER WHICH IS NOT INDICATED ON THE PLANS, THE PIPE SHALL BE ENCASED PER S-23, CASE III UNLESS OTHERWISE APPROVED BY THE COUNTY ENGINEER.
 - ALL JOINTS BETWEEN CAST IRON PIPE AND VITRIFIED CLAY PIPE SHALL BE MADE WITH A RUBBER SLEEVE JOINT, TYPE "C" OR "D", WITH MANNING IF NECESSARY PER STANDARD SPECIFICATIONS, SECTION 306-2.
 - SEWERS TO BE TESTED FOR LEAKAGE PER SECTION 306-1.6 OF THE STANDARD SPECIFICATIONS AND SPECIAL PROVISIONS.
 - RESURFACE ALL TRENCHES WITHIN PAVED AREAS TO MEET L.A. COUNTY ROAD DEPT. OR CALIFORNIA STATE HIGHWAY REQUIREMENTS IN ACCORDANCE WITH PERMITS.
 - FULL COMPLIANCE WITH SECTION 306-1.8.2 OF THE SPECIAL PROVISIONS WILL BE REQUIRED FOR BACKFILL IN STREETS. CERTIFICATION OF BACKFILL COMPACTION AND SAND EQUIVALENTS BY A QUALIFIED, REGISTERED TESTING LABORATORY SHALL BE PROVIDED BY THE PERMITTEE PRIOR TO THE RESUMPTION OF A CERTIFICATE OF PARTIAL ACCEPTANCE.



NO CHARGE FOR CONNECTIONS

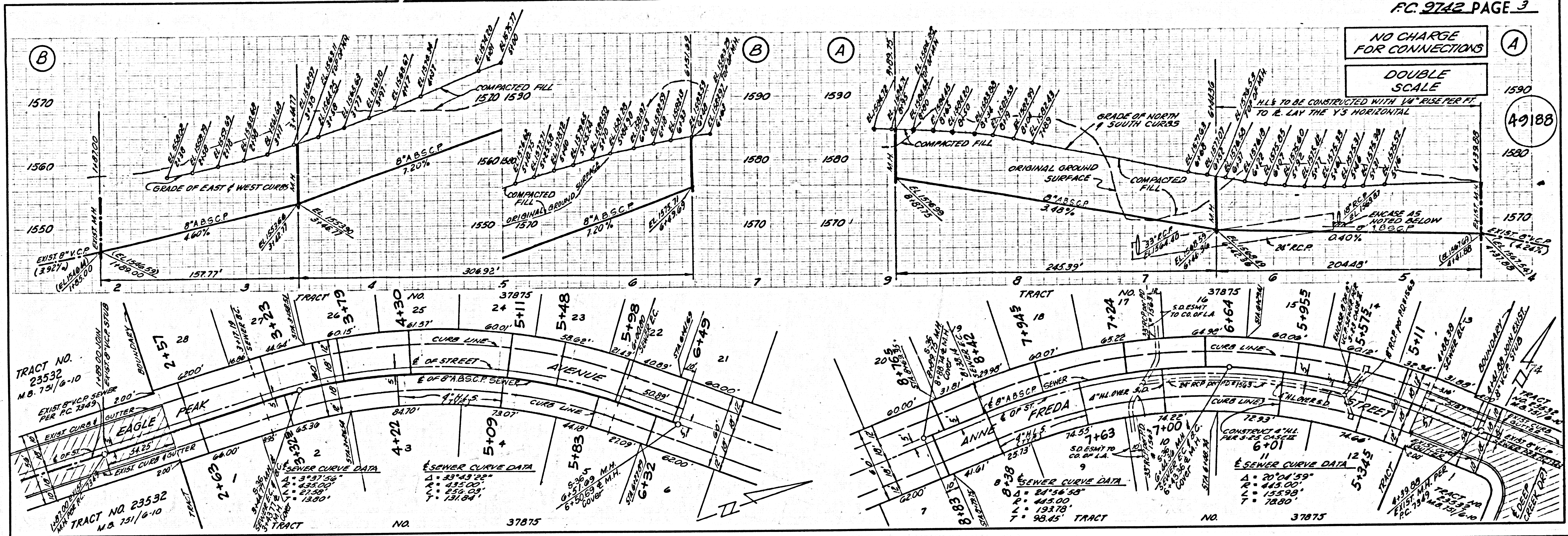
DOUBLE SCALE

49187

NO CHARGE FOR CONNECTIONS

DOUBLE SCALE

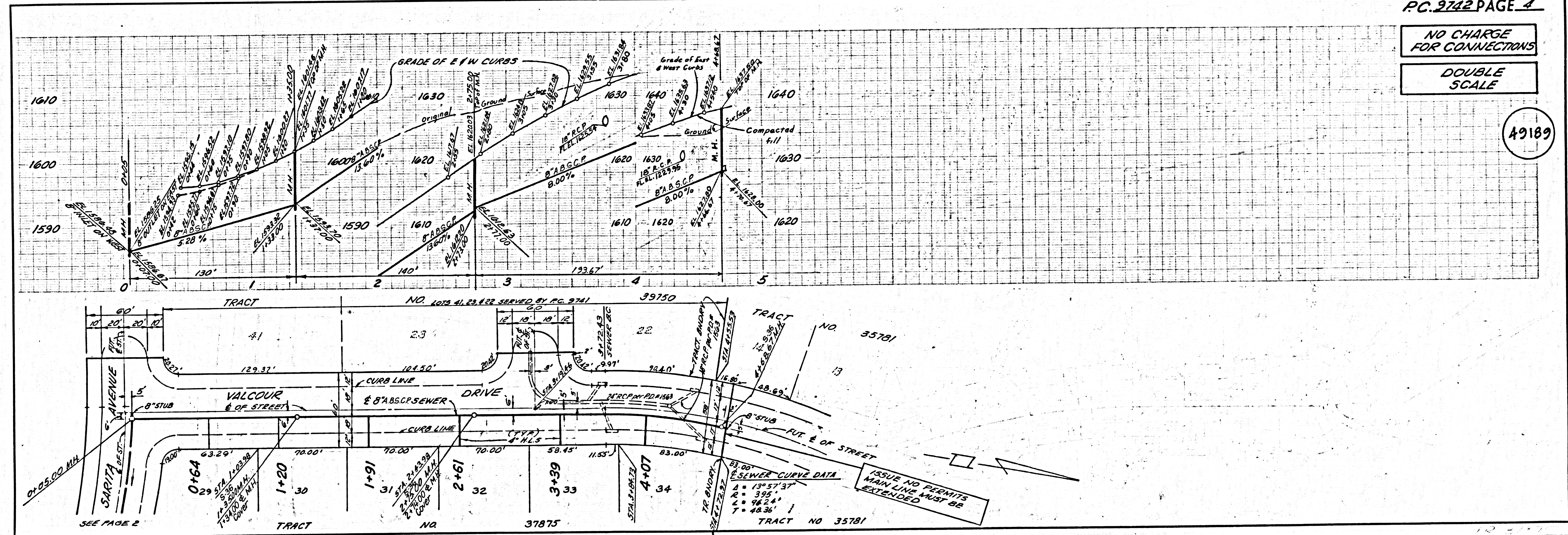
49188



NO CHARGE FOR CONNECTIONS

DOUBLE SCALE

49189



5
SAFE 09

HB HN HW HB SH 15'