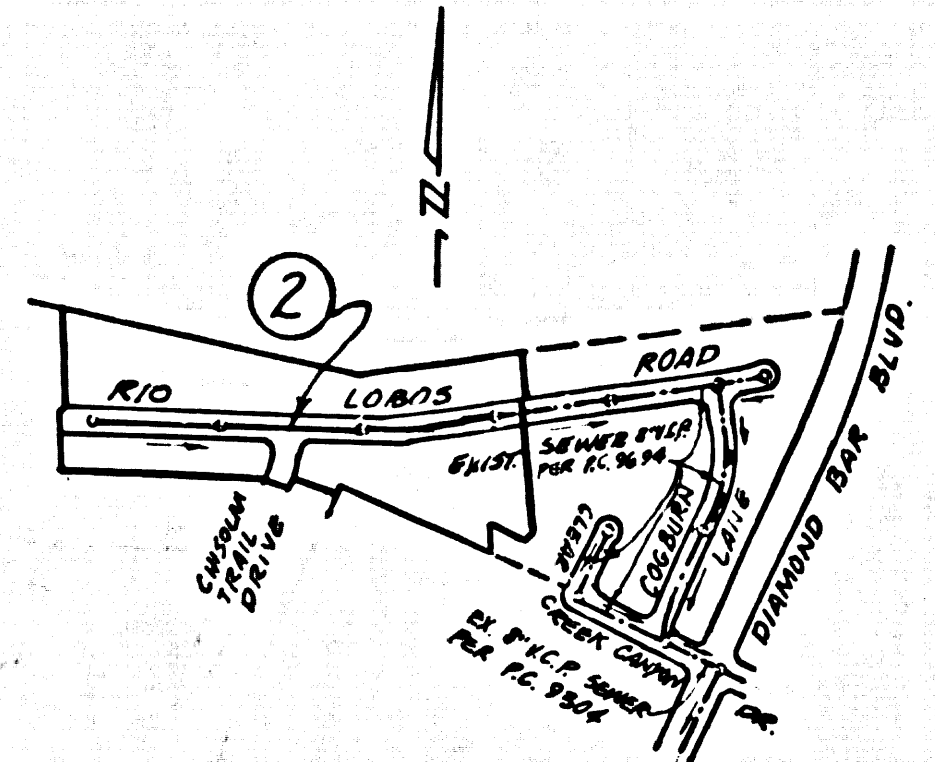


B.M. C.G. 3900 ELEV. 722.633
 R.D.M. Top in N. Edge C.B. 63 Ft.
 S. of 42 N. W. E. Int. Golden
 Springs Dr. of Grand Ave.
 O'Hanrahan QUAD. 1975 (ADL.)



Index Map
 Tract No 32457
 Scale 1" = 600'
 P.C. 9764

NOTE: NUMBER IN CIRCLE INDICATES PAGE NUMBER

REVISIONS	REVISIONS
△ CHANGED TRACT NUMBER	△ SHOWED N.L.'s TO LOTS 1, 2, 3, 6 AND 37 AS EXISTING PER P.C. 9694 PAGE 2
REVISED BY: <i>M.A. M...</i> R.E. No. 22504	REVISED BY: <i>M.A. M...</i> R.E. No. 22504
APPROVED: <i>Ralph Davis</i> DATE 9/15/50	APPROVED: <i>Sally G. ...</i> DATE 2-19-54

* NOTE: Lot 35 is served by main W.P. H.L. Constructed at lot 20 Tract No 37024 Issue Permit from P.C. 9694 page 4

BEFORE BREAKING GROUND ON CONSTRUCTION OF A CEMENT SANITATION DISTRICT LINES AND PRIOR TO FINAL ACCEPTANCE OF THE PROJECT, SANITATION DISTRICT INSPECTION SHALL BE NOTIFIED BY FORM 312-25'S SO THAT REQUIRED INSPECTION CAN BE MADE.

NO CONNECTION FOR THE DISPOSAL OF INDUSTRIAL WASTES SHALL BE MADE TO SEWERS FROM OR THROUGH BUILDINGS UNTIL A PERMIT FOR INDUSTRIAL WASTEWATER HAS BEEN ISSUED BY THE SANITATION DISTRICTS FOR SAID CONNECTION.

ISSUE NO PERMITS UNTIL P.C. 9694 IS ACCEPTED

- GENERAL NOTES: **DOUBLE SCALE**
- REVISIONS ARE IN PENCIL UNLESS OTHERWISE NOTED.
 - NO REVISIONS SHALL BE MADE IN THESE PLANS WITHOUT THE APPROVAL OF THE COUNTY ENGINEER.
 - NO REPRESENTATIVE OF THE COUNTY ENGINEER WILL SURVEY OR LAY OUT ANY PORTION OF THE WORK.
 - GRADES TO WHICH THIS IMPROVEMENT IS TO BE CONSTRUCTED ARE SHOWN ON PLANS AND PROFILES. GRADE POINTS FOR TOP OF CURBS, CENTER LINE OF STREETS, OR CENTER LINE OF ALLEYS ARE SHOWN BY CIRCLES ON PROFILES. AT ALL POINTS BETWEEN DESIGNATED POINTS THE GRADE SHALL BE ESTABLISHED SO AS TO CONFORM TO A STRAIGHT LINE DRAWN BETWEEN SAID DESIGNATED POINTS.
 - THE PRIVATE ENGINEER SHALL FURNISH THE COUNTY ENGINEER WITH GRADE SHEETS AND STATIONING FOR ALL HOUSE LATERALS AND "T" OR "Y" BRANCHES AND SHALL PROVIDE STAKES FOR THEM AT THEIR PROPER LOCATIONS WITH STATIONING PLAINLY MARKED. ALL HOUSE LATERALS SHALL BE CONSTRUCTED IN A STRAIGHT ALIGNMENT AT RIGHT ANGLES FROM THE MAIN LINE SEWER EXCEPT AS SHOWN ON THE PLANS. HOUSE LATERALS FROM CHIMNEYS SHALL NOT HAVE AN ANGLE OF LESS THAN 45° WITH THE MAIN LINE SEWER. ANY CHANGE IN ALIGNMENT SHALL BE REQUESTED IN WRITING BY THE PRIVATE ENGINEER.
 - THE PRIVATE ENGINEER SHALL FURNISH THE HOUSE LATERAL DRAIN AT THE PROPERTY LINE BELOW THE TOP OF CURB REVISION FOR EACH HOUSE LATERAL ON THE GRADE SHEET.
 - BEFORE WORK CAN BE STARTED, THE CONTRACTOR MUST OBTAIN A PERMIT TO EXCAVATE IN COUNTY STREETS FROM THE L.A. COUNTY ROAD DEPT., DISTRICT OFFICE NO. 7, AND PAY A FEE TO THE COUNTY ENGINEER, 210 S. SANTA ANA, SAN DIMAS REGIONAL OFFICE, TO COVER THE COST OF CONSTRUCTION INSPECTION AND RECORD PLANS.
 - IF WORK IS TO BE DONE IN A STATE HIGHWAY, A PERMIT MUST BE OBTAINED FROM THE STATE OF CALIFORNIA, DIVISION OF HIGHWAYS, 180 SOUTH SPRING STREET, LOS ANGELES, CALIFORNIA.
 - APPROVAL OF THIS PLAN BY THE COUNTY OF LOS ANGELES DOES NOT CONSTITUTE A REPRESENTATION AS TO THE ACCURACY OF THE LOCATION OR OF THE EXISTENCE OR NON-EXISTENCE OF ANY UNDERGROUND UTILITY PIPE, OR STRUCTURE WITHIN THE LIMITS OF THE PROJECT. THIS NOTE APPLIES TO ALL PAGES.
 - REFER TO SECTION 216.1.1 OF THE STANDARD SPECIFICATIONS, REGARDING SAFETY ORDERS.
 - PRIOR TO ISSUANCE OF THE REQUIRED SEWER CONSTRUCTION PERMIT, BY THE COUNTY ENGINEER, THE CONTRACTOR SHALL OBTAIN A PERMIT TO EXCAVATE FROM THE DIVISION OF CALIFORNIA DEPARTMENT OF INDUSTRIAL RELATIONS, DIVISION OF INDUSTRIAL SAFETY, AND SHALL FILE A CERTIFICATE OF WORKERS COMPENSATION WITH THE COUNTY ENGINEER.

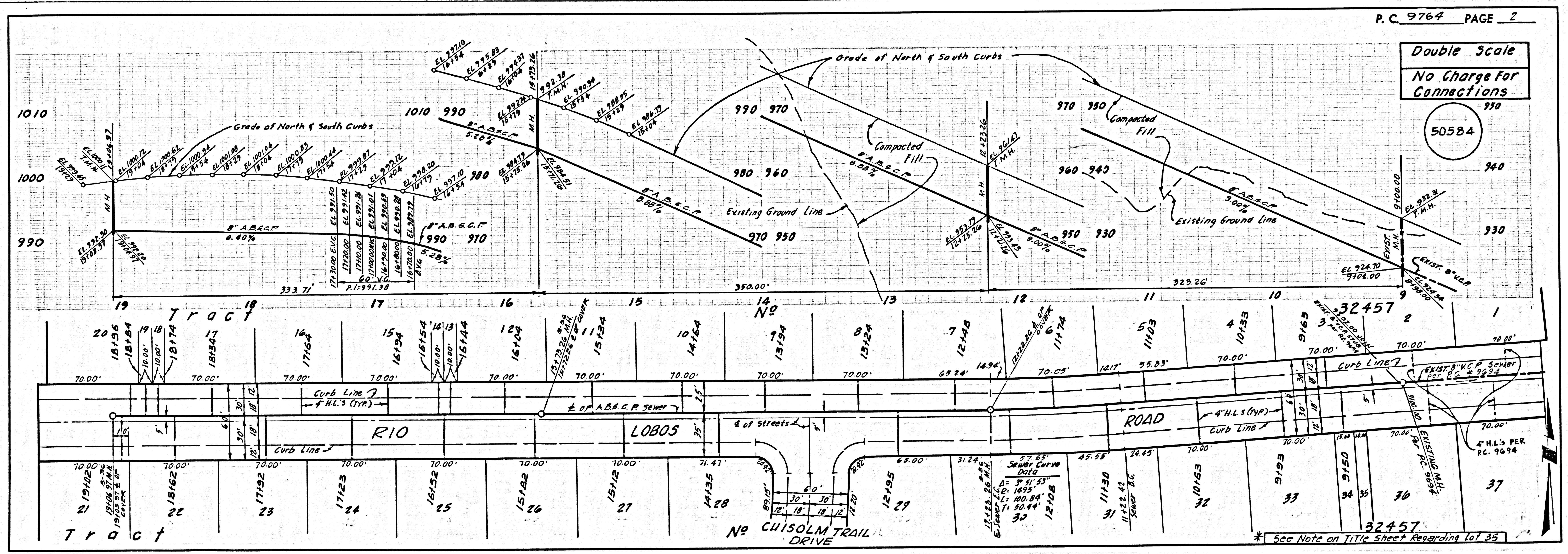
- CONSTRUCTION NOTES:
- WORK SHALL BE CONSTRUCTED ACCORDING TO THE STANDARD SPECIFICATIONS FOR PUBLIC WORKS CONSTRUCTION (1973 EDITION) WITH THE S.D.C. SUPPLEMENT AND COUNTY ENGINEER SPECIAL PROVISIONS FOR THE CONSTRUCTION OF SANITARY SEWERS DATED SEPTEMBER 21, 1972, AND SHALL BE PROSECUTED ONLY IN THE PRESENCE OF THE COUNTY ENGINEER.
 - THE CONTRACTOR SHALL NOTIFY THE APPROPRIATE AGENCIES (CITY, COUNTY, STATE, FEDERAL) AT LEAST FORTY-FOUR HOURS BEFORE STARTING ANY WORK UNDER THE CONTRACT.
 - HOUSE LATERALS TO BE CONSTRUCTED WITH INVERTS AT PROPERTY LINE 4 FEET BELOW CURB GRADE EXCEPT AS NOTED.
 - WYE OR TE BRANCHES MAY BE USED FOR CONNECTIONS TO MAINLINE SEWERS EXCEPT AS NOTED.
 - ALL STRUCTURES SHALL BE SEWER MANHOLES PER 2.5 OR PRECAST CONCRETE MANHOLES PER 2.3A, EXCEPT AS NOTED.
 - PROVIDE STAKES ON THE PROPERTY LINE OR PROPERTY LINES PRODUCED AT RIGHT ANGLES TO THE SEWER LINE AT THE CENTER LINE OF EACH MANHOLE.
 - MANHOLES FOR UNIMPROVED RIGHTS OF WAY TO BE SIX INCHES ABOVE FINISHED GRADE.
 - VERTICAL CLAY PIPE JOINTS SHALL BE TYPE "B" OR "C" PER STANDARD SPECIFICATIONS SECTION 200-2.
 - IF A POWER POLE IS WITHIN THREE FEET OF THE SEWER, THE SEWER SHALL BE ENCASED, PER 2.3, CASE II, TWO FEET ON EACH SIDE FROM THE POINT OF INTERFERENCE.
 - IF DURING THE COURSE OF CONSTRUCTION IT IS DETERMINED THAT THERE IS LESS THAN FOUR FEET OF COVER OVER THE TOP OF A MAIN LINE OR HOUSE LATERAL V.C.P. SEWER WHICH IS NOT INDICATED ON THE PLANS, THE PIPE SHALL BE ENCASED PER 2.3, CASE II UNLESS OTHERWISE APPROVED BY THE COUNTY ENGINEER.
 - ALL JOINTS BETWEEN CAST IRON PIPE AND VITRIFIED CLAY PIPE SHALL BE MADE WITH A RUBBER SLEEVE JOINT, TYPE "C" OR "D", WITH RUBBERING AS NECESSARY PER STANDARD SPECIFICATIONS, SECTION 200-2.
 - SEWERS TO BE TESTED FOR LEAKAGE PER SECTION 200-4.6 OF THE STANDARD SPECIFICATIONS AND SPECIAL PROVISIONS.
 - RESURFACE ALL TRENCHES WITHIN PAVED AREAS TO MEET L.A. COUNTY ROAD DEPT. OR CALIFORNIA STATE HIGHWAY REQUIREMENTS IN ACCORDANCE WITH PERMITS.
 - FULL COMPLIANCE WITH SECTION 200-2.8 OF THE SPECIAL PROVISIONS WILL BE REQUIRED FOR BACELLITE IN STREETS. CERTIFICATION OF BACELLITE CONACTION AND SAME EQUIVALENTS BY A QUALIFIED, REGISTERED TESTING LABORATORY SHALL BE PROVIDED BY THE PERMITTEE PRIOR TO THE ISSUANCE OF A CERTIFICATE OF PARTIAL ACCEPTANCE.
 - SPECIAL BACELLITE OR EQUIVALENTS:
 - (A) BACELLITE TRENCH AND RE-PLACE OTHER TRENCH REPAIRS SO AS TO ACQUIRE THE NATIONAL OR ANOTHER AGENCY AND 100% TESTS SHOWING THE BACELLITE MEETS ALL APPROVED PROPERTIES THAT ARE BY THE BUILDING AND SAFETY DIVISION.
 - (B) ALL BACELLITE AND TRENCH RE-PLACE SHALL BE CONDUCTED TO A MINIMUM OF 90% OF MAXIMUM DENSITY PER THE STANDARD METHOD OF TESTING AS SET FORTH IN THE BACELLITE CERTIFICATION OF EACH CONTRACTOR SHALL BE SUBMITTED TO THE ENVIRONMENTAL DEVELOPMENT DIVISION.

PROFILE, ALIGNMENT AND GRADE OF
SANITARY SEWERS PAGE 1
 TO BE CONSTRUCTED IN
 Tract No 32457
 PRIVATE CONTRACT NO. 9764
 W.S. 39-C.3
 1 SHEET, 2 PAGES
 SCALE: VERT. 1" = 8'
 HORIZ. 1" = 40' NOVEMBER, 1979
 PREPARED IN THE OFFICES OF
 L.A. CO. ENGINEERING
 17430 S. Prairie Ave. Torrance, Calif. 90504
 BY: *C. M. Lead*
 REG. C. E. No. 13167

THE FOLLOWING LATEST REVISED STANDARD PLANS ON FILE IN THE OFFICE OF THE COUNTY ENGINEER SHALL APPLY IN THE CONSTRUCTION OF THIS PROJECT.

SECTION 200-2.3	MINIMUM PUBLIC SAFETY REQUIREMENTS	2-1
SECTION 200-2.3	BRICK MANHOLE	2-2
SECTION 200-2.3	STANDARD MANHOLE STEP	2-3
SECTION 200-2.3	REINFORCING FOR SEWER PIPE	2-4
SECTION 200-2.3	CHASING AND IMBEDMENT	2-5
SECTION 200-2.3	WYE OR TE SUPPORT	2-6
SECTION 200-2.3	ALLOWABLE TRENCH WIDTHS	2-7
SECTION 200-2.3	LOCKING MANHOLE FRAME AND COVER	2-8
SECTION 200-2.3	NON-REINFORCED PRECAST CONCRETE MANHOLE	2-9

COUNTY OF LOS ANGELES, CALIFORNIA
 STEPHEN J. KOONCE, COUNTY ENGINEER WALTER E. GARRISON, CHIEF ENGINEER
 CO. AN DIST. NO. 11
 APPROVED: *John Miller* 8/27/80 APPROVED: *John M. Kelly* 9/14/80
 SAN DIMAS REGIONAL ENGINEER DISTRICT OFFICE ENGINEER
 CHECKED: *Ralph Davis* 8/14/80
 REG. C. E. NO. 16883
 SAN DIMAS BLDG. DIST. 10.00



B-2812

ALSO ON TRACT 32457