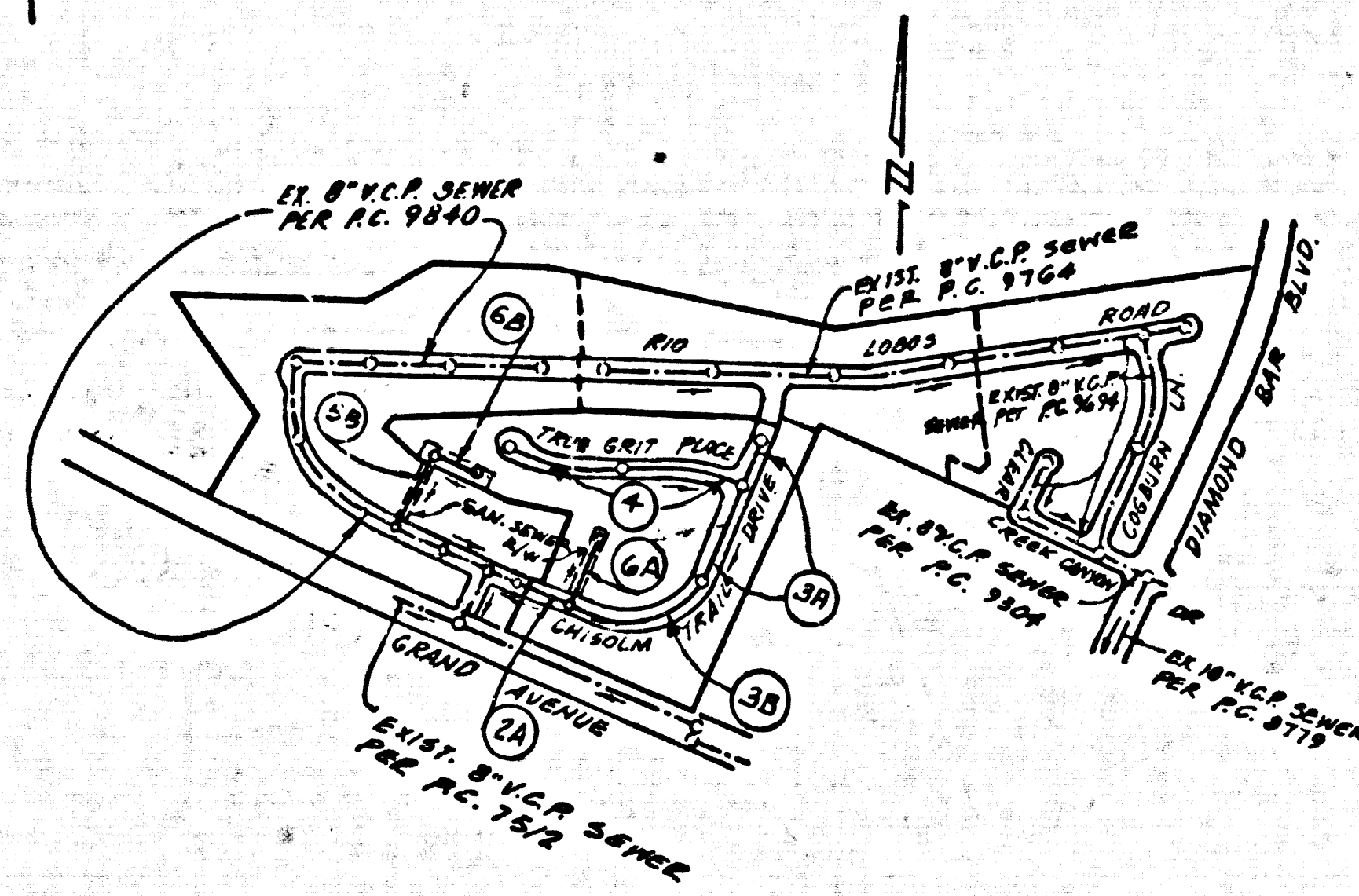


B.M. C.G. 3900 ELEV. 742.683  
 R.D.M. Peg in N. edge C.B. 83 Ft.  
 3.44 E.F. W. E Int. Golden  
 Springs Dr. f Grand Ave.  
 Offerbein QUAD. 1975 (ADU)



Index Map  
 Tract No. 37874  
 Scale 1"=600  
 P.C. 9765

NOTE: NUMBERS IN CIRCLES INDICATE PAGE NUMBERS

REVISION No. 2		REVISIONS No. 1	
PAGE 4	ELIMINATE BACKWATER VALVES & PAD ELEVATIONS FOR LOTS 36-38.	PAGE 1	REVISED INDEX MAP TO REFLECT CONSTRUCTION OF P.C. 9840
REVISED BY: M.A. M.L.S. REZGOS	DATE 8/10/83	PAGE 2A	REVISED SEWER FROM EASEMENT JOINING M.N. @ STA. 3+48.78 ADDED 11.5' TO LOTS 11-13. REFLECTED CONSTRUCTION PER P.C. 9840.
APPROVED: [Signature]	DATE 8/10/83	PAGE 2-B	ELIMINATED CONSTRUCTION.
		PAGE 3-A	CONST. 10" STUB FROM M.N. @ STA. 1+6.25. REVISED N.L. TO LOT 1.
		PAGE 4	CONST. 10" STUB FROM M.N. @ STA. 6+7.35. REVISED N.L. TO LOT 38.
		PAGE 5-A	ELIMINATED CONSTRUCTION.
		PAGE 5-B	REFLECTED CONSTRUCTION PER P.C. 9840
		PAGE 6-A	REVISED ALIGNMENT AND GRADE.
		PAGE 6-B	REFLECTED RECORDATION OF TRACT NO. 37874.
		REVISED BY: M.A. M.L.S. REZGOS	DATE 8/10/83
		APPROVED: [Signature]	DATE 8/10/83

NOTE:  
 ALLOW NO CONNECTIONS UNTIL SAN. SEWER R/W IS CLEARED.

NO CONNECTION FOR THE DISPOSAL OF INDUSTRIAL WASTES SHALL BE MADE TO SEWER SHOW OR UNDER ANY OTHER ACCEPTANCE OF THE PROJECT. SANITATION DISTRICT INSPECTOR SHALL BE NOTIFIED BY PHONE 7-2-2005 SO THAT REQUIRED INSPECTION CAN BE MADE.

NO CONNECTION FOR THE DISPOSAL OF INDUSTRIAL WASTES SHALL BE MADE TO SEWER SHOW OR UNDER ANY OTHER ACCEPTANCE OF THE PROJECT. SANITATION DISTRICT INSPECTOR SHALL BE NOTIFIED BY PHONE 7-2-2005 SO THAT REQUIRED INSPECTION CAN BE MADE.

GENERAL NOTES: DOUBLE SCALE

1. REVISIONS ARE IN FEET ABOVE M.S.C. & G.S. SEA LEVEL DATUM OF 1929.
2. NO REVISIONS SHALL BE MADE IN THESE PLANS WITHOUT THE APPROVAL OF THE COUNTY ENGINEER.
3. NO REPRESENTATIVE OF THE COUNTY ENGINEER WILL BE ON SITE AT ANY POINT OF THE WORK.
4. GRADES TO WHICH THIS IMPROVEMENT IS TO BE CONSTRUCTED ARE SHOWN ON PLANS AND PROFILES. GRADE POINTS FOR TOP OF CURBS, CENTER LINE OF STREETS, OR CENTER LINE OF ALLEYS ARE SHOWN BY CIRCLES ON PROFILES. AT ALL POINTS BETWEEN DESIGNATED POINTS THE GRADE SHALL BE ESTABLISHED SO AS TO CONFORM TO A STRAIGHT LINE DRAWN BETWEEN SAID DESIGNATED POINTS.
5. THE PRIVATE ENGINEER SHALL FURNISH THE COUNTY ENGINEER WITH GRADE SHEETS AND STATIONING FOR ALL HOUSE LATERALS AND "1" OR "1 1/2" MANHOLES AND SHALL PROVIDE STAKES FOR THEM AT THEIR PROPER LOCATIONS WITH STATIONING PLAINLY MARKED. ALL HOUSE LATERALS SHALL BE CONSTRUCTED IN A STRAIGHT ALIGNMENT AT RIGHT ANGLES FROM THE MAIN LINE SEWER EXCEPT AS SHOWN ON THE PLANS. HOUSE LATERALS FROM CHIMNEYS SHALL NOT HAVE AN ANGLE OF LESS THAN 45° WITH THE MAIN LINE SEWER. ANY CHANGE IN ALIGNMENT SHALL BE REQUESTED IN WRITING BY THE PRIVATE ENGINEER.
6. THE PRIVATE ENGINEER SHALL FURNISH THE HOUSE LATERAL SHEET AT THE PROPERTY LINE SHOWING THE TOP OF CURB ELEVATION FOR EACH HOUSE LATERAL ON THE GRADE SHEET.
7. BEFORE WORK CAN BE STARTED, THE CONTRACTOR MUST OBTAIN A PERMIT TO OCCUPY IN COUNTY STREETS FROM THE L.A. COUNTY ROAD DEPT., WITH OFFICE NO. 1-1-1-1-1 AND PAY A FEE TO THE COUNTY ENGINEER, P.O. BOX 39, SAN DIMAS REGIONAL OFFICE, TO COVER THE COST OF CONSTRUCTION INSPECTION AND RECORD PLANS.
8. IF WORK IS TO BE DONE ON A STATE HIGHWAY, A PERMIT MUST BE OBTAINED FROM THE STATE OF CALIFORNIA, DIVISION OF HIGHWAYS, 120 SOUTH BRIDGE STREET, LOS ANGELES, CALIFORNIA.
9. APPROVAL OF THIS PLAN BY THE COUNTY OF LOS ANGELES DOES NOT CONSTITUTE A REPRESENTATION AS TO THE ACCURACY OF THE LOCATION OF OR THE EXISTENCE OR NON-EXISTENCE OF ANY UNDERGROUND UTILITY PIPE, OR STRUCTURE WITHIN THE LIMITS OF THE PROJECT. THIS NOTE APPLIES TO ALL PAGES.
10. REFER TO SECTION 116.41 OF THE STANDARD SPECIFICATIONS, REGARDING SAFETY SIGNALS.
11. PRIOR TO RESTARTING OF THE RECONSTRUCTION WORK CONSTRUCTION PERMIT BY THE COUNTY ENGINEER, THE CONTRACTOR SHALL OBTAIN A PERMIT TO OCCUPY IN COUNTY STREETS FROM THE L.A. COUNTY ROAD DEPT., WITH OFFICE NO. 1-1-1-1-1 AND PAY A FEE TO THE COUNTY ENGINEER, P.O. BOX 39, SAN DIMAS REGIONAL OFFICE, TO COVER THE COST OF CONSTRUCTION INSPECTION AND RECORD PLANS.

CONSTRUCTION NOTES:

1. WORK SHALL BE CONSTRUCTED ACCORDING TO THE STANDARD SPECIFICATIONS FOR PUBLIC WORKS CONSTRUCTION (PART 116) WITH 1980 SUPPLEMENT) AND COUNTY ENGINEER SPECIAL PROVISIONS FOR THE CONSTRUCTION OF SANITARY SEWERS BATTERED SECTIONS AND LATERALS AND SHALL BE CONDUCTED ONLY IN THE PRESENCE OF THE COUNTY ENGINEER.
2. THE CONTRACTOR SHALL NOTIFY THE ENVIRONMENTAL DEVELOPMENT DIVISION, PHOENIX (80)738-0264, AT LEAST TWENTY-FOUR HOURS BEFORE STARTING ANY WORK UNDER THIS CONTRACT.
3. HOUSE LATERALS TO BE CONSTRUCTED WITH INVERTS AT PROPERTY LINE & MUST BE 18" DIA. UNLESS OTHERWISE NOTED.
4. TYPE OF THE MANHOLES TO BE USED FOR CONNECTIONS TO EXISTING SEWERS EXCEPT AS NOTED.
5. ALL STRUCTURES SHALL BE EITHER BRICK MANHOLES PER S-28 OR PRECAST CONCRETE MANHOLES PER S-28, EXCEPT AS NOTED.
6. PROVIDE STAKES ON THE PROPERTY LINE OR PROPERTY LINE PRODUCE AT RIGHT ANGLES TO THE SEWER LINE AT THE CENTER LINE OF EACH MANHOLE.
7. MANHOLES FOR UNIMPROVED RIGHTS OF WAY TO BE SEE SPECIES ABOVE FINISHED GRADE.
8. WITHIN CURB AND JOINTS SHALL BE TYPE "C" OR "D" PER STANDARD SPECIFICATIONS SECTION 380-2.
9. IF A POWER POLE IS WITHIN THREE FEET OF THE SEWER, THE SEWER SHALL BE ENCASED PER S-28, CASE 2, TWO FEET ON EACH SIDE FROM THE POINT OF INTERFERENCE.
10. IF DURING THE COURSE OF CONSTRUCTION IT IS DETERMINED THAT THERE IS LESS THAN FOUR FEET OF COVER OVER THE TOP OF A MAIN LINE OR HOUSE LATERAL V.C.P. SEWER WHICH IS NOT INDICATED ON THE PLANS, THE PIPE SHALL BE ENCASED PER S-28, CASE 2, UNLESS OTHERWISE APPROVED BY THE COUNTY ENGINEER.
11. ALL JOINTS BETWEEN CAST IRON PIPE SHALL BE MADE WITH A RUBBER SLEEVE JOINT, TYPE "C" OR "D".
12. REFER TO SECTION 116.41 OF THE STANDARD SPECIFICATIONS AND SPECIAL PROVISIONS.
13. RESURFACE ALL TRENCHES WITHIN PAVED AREAS TO MEET L.A. COUNTY ROAD DEPT. OR CALIFORNIA STATE HIGHWAY REQUIREMENTS IN ACCORDANCE WITH PERMITS.
14. FULL COMPLIANCE WITH SECTION 380-2.6 OF THE SPECIAL PROVISIONS WILL BE REQUIRED FOR BACKFILL IN STREETS. CERTIFICATION OF BACKFILL COMPACTION AND SAND EQUIVALENTS BY A QUALIFIED, REGISTERED TESTING LABORATORY SHALL BE PROVIDED BY THE PRIVATE ENGINEER PRIOR TO THE ISSUANCE OF A CERTIFICATE OF PRACTICAL ACCEPTANCE.
15. SPECIAL COMPACTING AND SAND EQUIVALENTS SHALL BE PROVIDED BY THE PRIVATE ENGINEER. THE CONTRACTOR SHALL BE RESPONSIBLE FOR THE PROVISION OF ALL MATERIALS AND LABOR REQUIRED FOR THE CONSTRUCTION OF THE SEWER AND LATERALS. ALL BACKFILL AND SAND EQUIVALENT SHALL BE COMPACTED TO A MINIMUM OF 90% IN ACCORDANCE WITH SECTION 380-2.6 OF THE STANDARD SPECIFICATIONS AND SPECIAL PROVISIONS. ALL BACKFILL AND SAND EQUIVALENT SHALL BE SUBMITTED TO THE ENVIRONMENTAL DEVELOPMENT DIVISION.

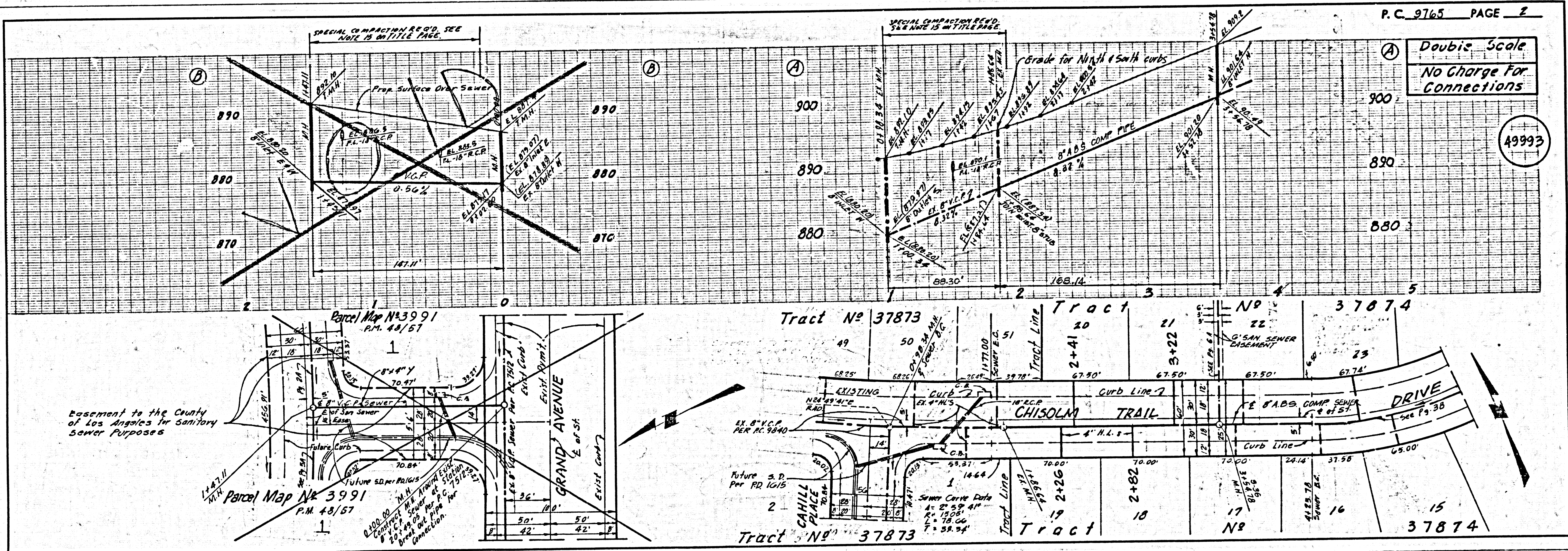
TO BE CONSTRUCTED IN  
 Tract No. 37874  
 PRIVATE CONTRACT NO. 9765

W.S. 39-C.3  
 3 SHEETS, 6 PAGES  
 SCALE: VERT. 1"=4', HORIZ. 1"=40'  
 DECEMBER, 1979  
 PREPARED IN THE OFFICES OF  
 LANGO ENGINEERING  
 17430 S. Prairie Ave. Torrance, Calif. 90504  
 BY: C. M. Lead  
 REG. C. E. No. 18167

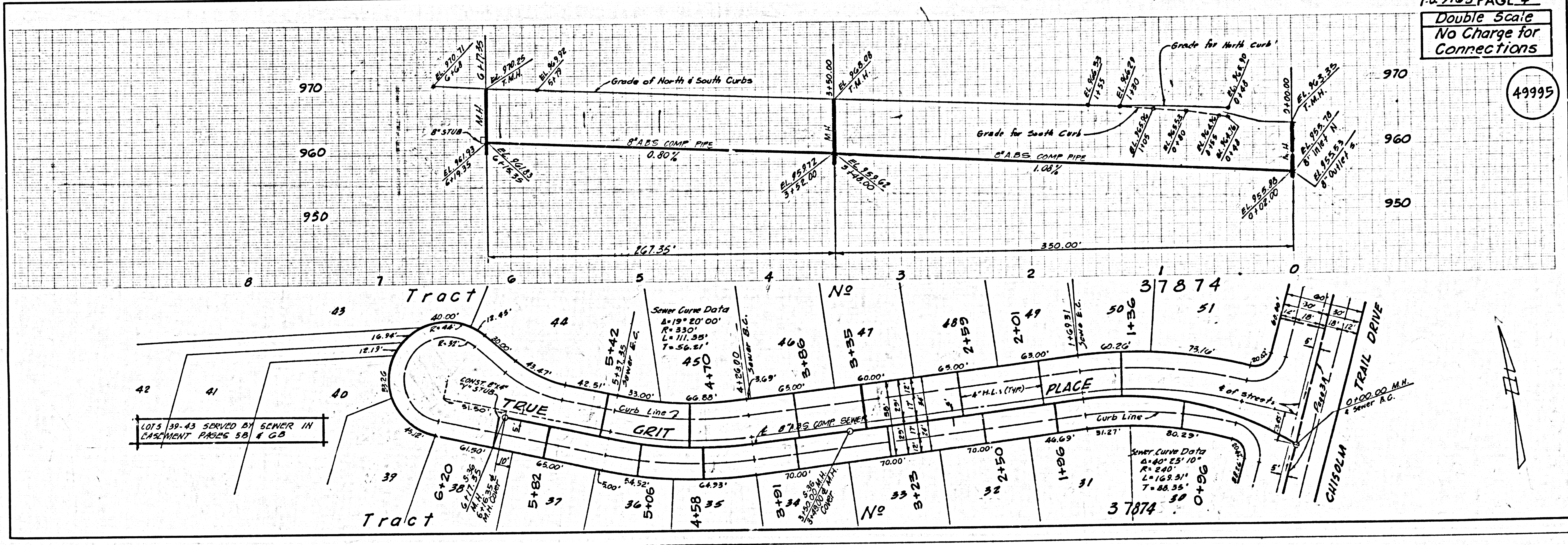
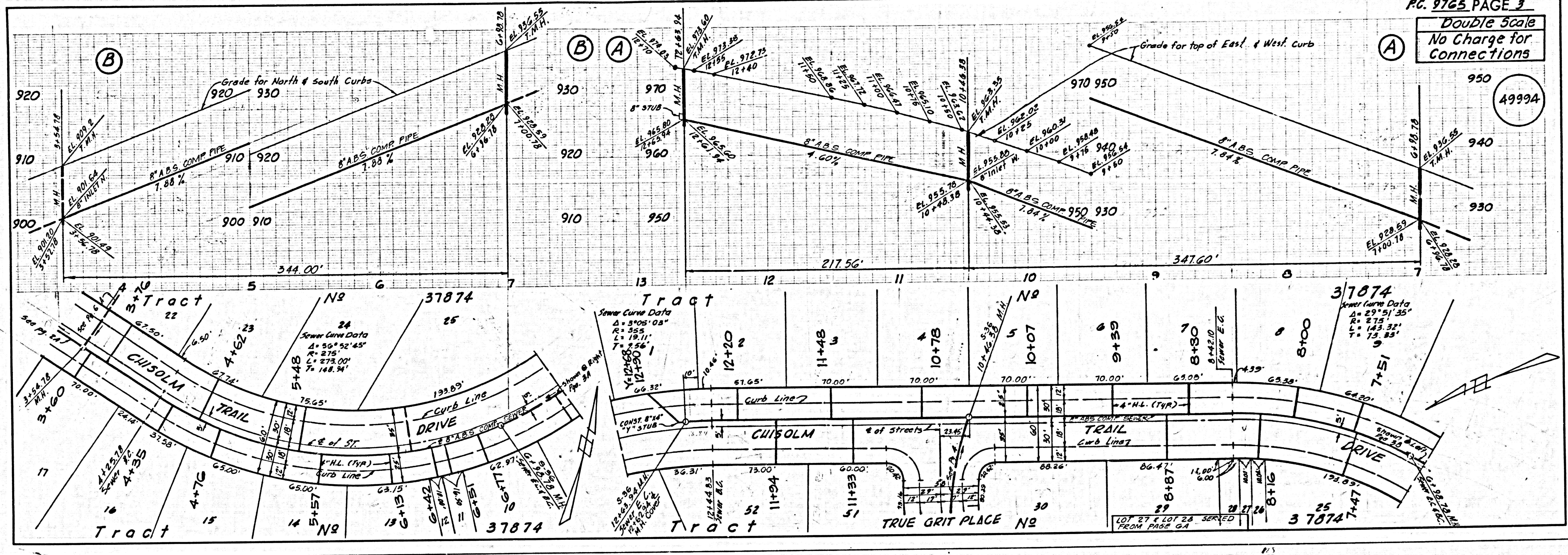
THE FOLLOWING LATEST REVISED STANDARD PLANS ON FILE IN THE OFFICE OF THE COUNTY ENGINEER SHALL APPLY IN THE CONSTRUCTION OF THIS PROJECT.

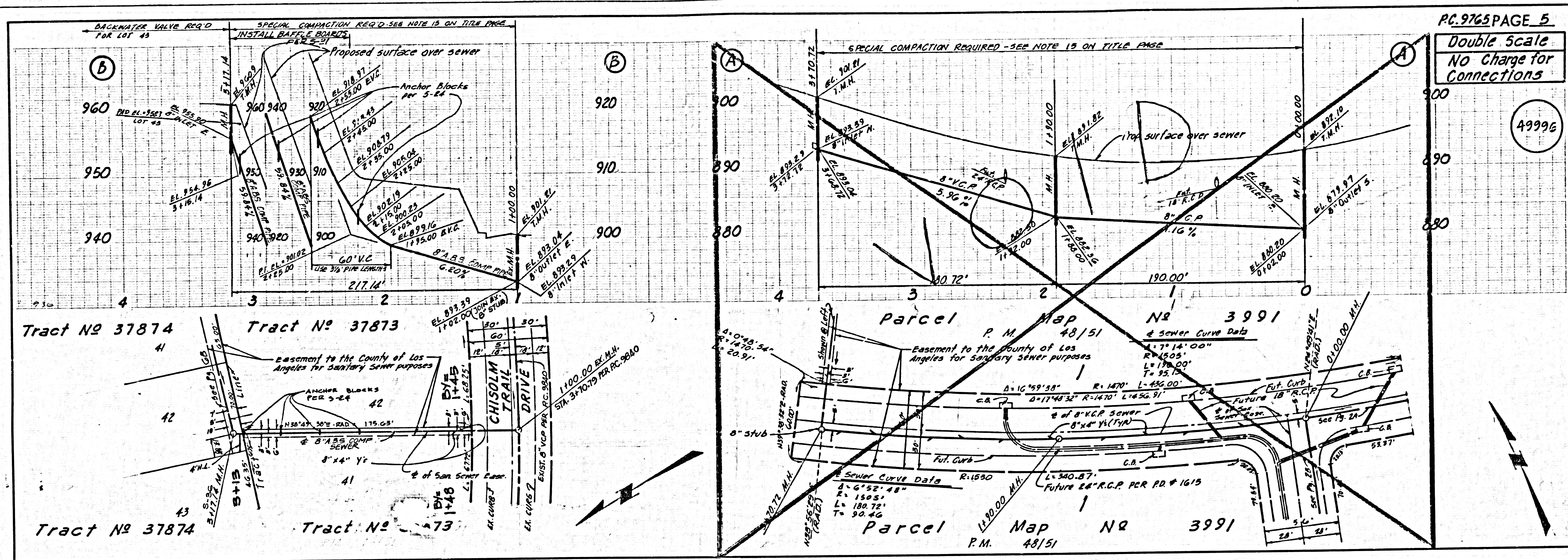
116.41	STANDARD SPECIFICATIONS FOR PUBLIC WORKS CONSTRUCTION (PART 116) WITH 1980 SUPPLEMENT	S-28
116.42	STANDARD SPECIFICATIONS FOR THE CONSTRUCTION OF SANITARY SEWERS BATTERED SECTIONS AND LATERALS	S-28
116.43	STANDARD SPECIFICATIONS FOR THE CONSTRUCTION OF SANITARY SEWERS BATTERED SECTIONS AND LATERALS	S-28
116.44	STANDARD SPECIFICATIONS FOR THE CONSTRUCTION OF SANITARY SEWERS BATTERED SECTIONS AND LATERALS	S-28
116.45	STANDARD SPECIFICATIONS FOR THE CONSTRUCTION OF SANITARY SEWERS BATTERED SECTIONS AND LATERALS	S-28
116.46	STANDARD SPECIFICATIONS FOR THE CONSTRUCTION OF SANITARY SEWERS BATTERED SECTIONS AND LATERALS	S-28
116.47	STANDARD SPECIFICATIONS FOR THE CONSTRUCTION OF SANITARY SEWERS BATTERED SECTIONS AND LATERALS	S-28
116.48	STANDARD SPECIFICATIONS FOR THE CONSTRUCTION OF SANITARY SEWERS BATTERED SECTIONS AND LATERALS	S-28
116.49	STANDARD SPECIFICATIONS FOR THE CONSTRUCTION OF SANITARY SEWERS BATTERED SECTIONS AND LATERALS	S-28
116.50	STANDARD SPECIFICATIONS FOR THE CONSTRUCTION OF SANITARY SEWERS BATTERED SECTIONS AND LATERALS	S-28
116.51	STANDARD SPECIFICATIONS FOR THE CONSTRUCTION OF SANITARY SEWERS BATTERED SECTIONS AND LATERALS	S-28
116.52	STANDARD SPECIFICATIONS FOR THE CONSTRUCTION OF SANITARY SEWERS BATTERED SECTIONS AND LATERALS	S-28
116.53	STANDARD SPECIFICATIONS FOR THE CONSTRUCTION OF SANITARY SEWERS BATTERED SECTIONS AND LATERALS	S-28
116.54	STANDARD SPECIFICATIONS FOR THE CONSTRUCTION OF SANITARY SEWERS BATTERED SECTIONS AND LATERALS	S-28
116.55	STANDARD SPECIFICATIONS FOR THE CONSTRUCTION OF SANITARY SEWERS BATTERED SECTIONS AND LATERALS	S-28
116.56	STANDARD SPECIFICATIONS FOR THE CONSTRUCTION OF SANITARY SEWERS BATTERED SECTIONS AND LATERALS	S-28
116.57	STANDARD SPECIFICATIONS FOR THE CONSTRUCTION OF SANITARY SEWERS BATTERED SECTIONS AND LATERALS	S-28
116.58	STANDARD SPECIFICATIONS FOR THE CONSTRUCTION OF SANITARY SEWERS BATTERED SECTIONS AND LATERALS	S-28
116.59	STANDARD SPECIFICATIONS FOR THE CONSTRUCTION OF SANITARY SEWERS BATTERED SECTIONS AND LATERALS	S-28
116.60	STANDARD SPECIFICATIONS FOR THE CONSTRUCTION OF SANITARY SEWERS BATTERED SECTIONS AND LATERALS	S-28

COUNTY OF LOS ANGELES, CALIFORNIA  
 STEPHEN J. ROAN, COUNTY ENGINEER  
 APPROVED: [Signature] DATE 8/10/83  
 CHECKED: [Signature] DATE 8/10/83  
 SAN DIMAS BLDG. DIST. 1002

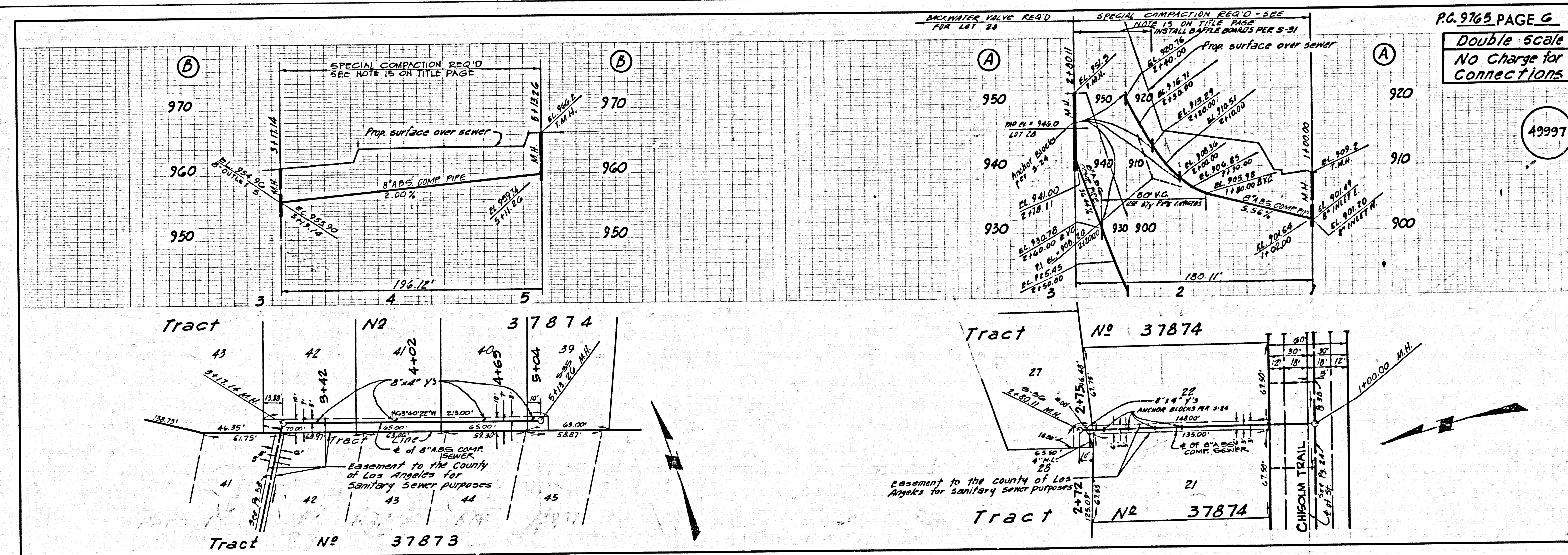


2025 479 2025 479 2025 479





16401 NO 31814 BC 2102



2813