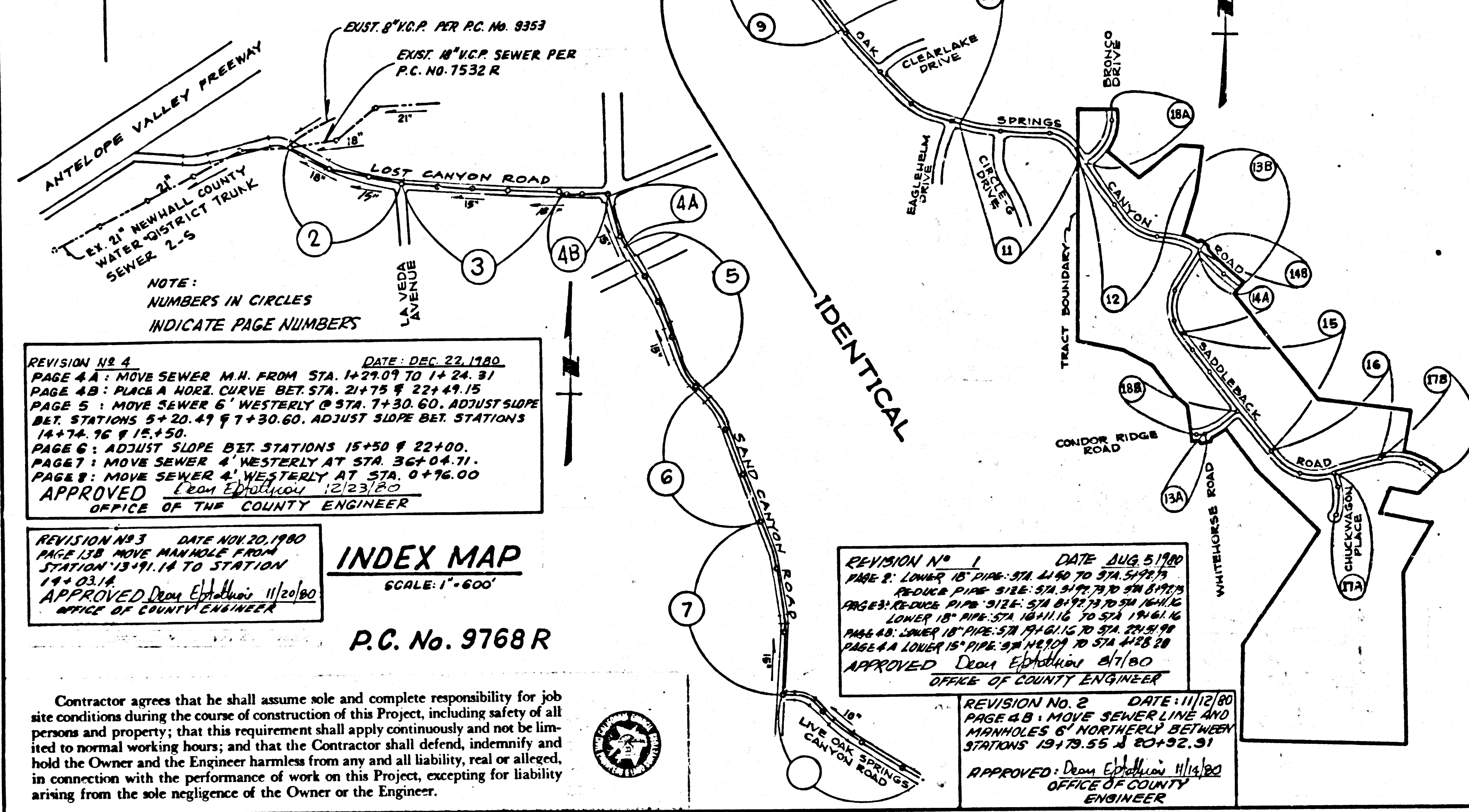


B.M. BL 1668 ELEV. 1583.373
 CS MON IN WELL 10 IN DN @ PI 2 FT E
 6/1 SAND CANYON RD + 61 MI LN LINE OAK
 SPRINGS CANYON RD 27 FT NE PP
 1185006 MKD (PI 74) USE B EDGE
 NEWHALL QUAD. 1972



INDEX MAP
 SCALE: 1" = 600'
 P.C. No. 9768 R

Contractor agrees that he shall assume sole and complete responsibility for job site conditions during the course of construction of this Project, including safety of all persons and property; that this requirement shall apply continuously and not be limited to normal working hours; and that the Contractor shall defend, indemnify and hold the Owner and the Engineer harmless from any and all liability, real or alleged, in connection with the performance of work on this Project, excepting for liability arising from the sole negligence of the Owner or the Engineer.

GENERAL NOTES:

- ELEVATIONS ARE IN FEET ABOVE U.S.C. & G.S. SEA LEVEL DATUM OF 1929.
- NO REVISIONS SHALL BE MADE IN THESE PLANS WITHOUT THE APPROVAL OF THE COUNTY ENGINEER.
- NO REPRESENTATIVE OF THE COUNTY ENGINEER WILL SURVEY OR LAY OUT ANY PORTION OF THE WORK.
- GRADES TO WHICH THIS IMPROVEMENT IS TO BE CONSTRUCTED ARE SHOWN ON PLANS AND PROFILES. GRADE POINTS FOR TOP OF CURBS, CENTER LINE OF STREETS, OR CENTER LINE OF ALLEYS ARE SHOWN BY CIRCLES ON PROFILES. AT ALL POINTS BETWEEN DESIGNATED POINTS THE GRADE SHALL BE ESTABLISHED SO AS TO CONFORM TO A STRAIGHT LINE DRAWN BETWEEN SAID DESIGNATED POINTS.
- THE PRIVATE ENGINEER SHALL FURNISH THE COUNTY ENGINEER WITH GRADE SHEETS AND STATIONING FOR ALL HOUSE LATERALS AND "T" OR "T" BRANCHES AND SHALL PROVIDE STAKE FOR THEM AT THEIR PROFILE LOCATIONS WITH STATIONING PLAINLY MARKED. ALL HOUSE LATERALS SHALL BE CONSTRUCTED IN A STRAIGHT ALIGNMENT AT RIGHT ANGLES FROM THE MAIN LINE SEWER EXCEPT AS SHOWN ON THE PLANS. HOUSE LATERALS FROM CHIMNEYS SHALL NOT HAVE AN ANGLE OF LESS THAN 45° WITH THE MAIN LINE SEWER. ANY CHANGE IN ALIGNMENT SHALL BE REQUESTED IN WRITING BY THE PRIVATE ENGINEER.
- THE PRIVATE ENGINEER SHALL FURNISH THE HOUSE LATERAL BENCH AT THE PROPERTY LINE BELOW THE TOP OF CURB GRADE FOR EACH HOUSE LATERAL ON THE GRADE SHEET.
- BEFORE WORK CAN BE STARTED, THE CONTRACTOR MUST OBTAIN A PERMIT TO EXCAVATE IN COUNTY STREETS FROM THE L.A. COUNTY ROAD DEPT. DISTRICT OFFICE NO. 8... AND PAY A FEE TO THE COUNTY ENGINEER, 550 SOUTH VERMONT AVE., ROOM 408, LOS ANGELES... TO COVER THE COST OF CONSTRUCTION INSPECTION AND RECORD PLANS.
- IF WORK IS TO BE DONE ON A STATE HIGHWAY, A PERMIT MUST BE OBTAINED FROM THE STATE OF CALIFORNIA, DIVISION OF HIGHWAYS, 130 SOUTH SPRING STREET, LOS ANGELES, CALIFORNIA.
- APPROVAL OF THIS PLAN BY THE COUNTY OF LOS ANGELES DOES NOT CONSTITUTE A REPRESENTATION AS TO THE ACCURACY OF THE LOCATION OR THE EXISTENCE OR NON-EXISTENCE OF ANY UNDERGROUND UTILITY PIPE, OR STRUCTURE WITHIN THE LIMITS OF THIS PROJECT. THIS NOTE APPLIES TO ALL PAGES.
- REFER TO SECTION 7-18.11 OF THE STANDARD SPECIFICATIONS, REGARDING SAFETY DEVICES.
- BEFORE THE ISSUANCE OF THE REQUIRED PERMIT FOR CONSTRUCTION PERMIT, THE CONTRACTOR SHALL OBTAIN AND FILE WITH THE COUNTY ENGINEER COPIES OF A PERMIT TO EXCAVATE IN COUNTY STREETS FROM THE LOS ANGELES COUNTY ROAD DEPARTMENT, A PERMIT FOR EXCAVATIONS AND TRENCHES FROM THE STATE OF CALIFORNIA, DIVISION OF INDUSTRIAL SAFETY AND A CERTIFICATE OF WORKERS COMPENSATION INSURANCE WITH THE DEPARTMENT OF COUNTY ENGINEER, 550 SOUTH VERMONT AVE. ROOM 408, LOS ANGELES, CALIFORNIA. 90023, NAMED AS THE CERTIFICATE HOLDER TO BE NOTIFIED 30 DAYS PRIOR TO CANCELLATION OF POLICY.

CONSTRUCTION NOTES:

- WORK SHALL BE CONSTRUCTED ACCORDING TO THE STANDARD SPECIFICATIONS FOR PUBLIC WORKS CONSTRUCTION (1973 EDITION) WITH THE SUPPLEMENTS AND COUNTY ENGINEER SPECIAL PROVISIONS FOR THE CONSTRUCTION OF SEWERAGE SYSTEMS DATED 5-27-79, 1976, AND SHALL BE INSPECTED ONLY IN THE PRESENCE OF THE COUNTY ENGINEER.
- THE CONTRACTOR SHALL NOTIFY THE ENGINEERING DEVELOPMENT DIVISION BY TELEPHONE (213) 221-2111, AT LEAST TWENTY FOUR HOURS BEFORE STARTING ANY WORK UNDER THIS CONTRACT.
- HOUSE LATERALS TO BE CONSTRUCTED WITHIN PROPERTY LINE 6 FEET BELOW CURB GRADE EXCEPT AS NOTED.
- WYS OR THE BRANCHES MAY BE USED FOR CONNECTIONS TO MAINLINE SEWERS EXCEPT AS NOTED.
- ALL STRUCTURES SHALL BE EITHER BRICK MANHOLES PER S-3 OR PRECAST CONCRETE MANHOLES PER S-3A, EXCEPT AS NOTED.
- PROVIDE STAKES ON THE PROPERTY LINE OR PROPERTY LINES PRODUCED AT RIGHT ANGLES TO THE SEWER LINE AT THE CENTER LINE OF EACH MANHOLE.
- MANHOLE TOPS IN UNIMPROVED RIGHTS OF WAY TO BE SIX INCHES ABOVE FINISHED GRADE.
- VERTICAL CURVE JOINTS SHALL BE "S", "C" OR "P" PER STANDARD SPECIFICATIONS SECTION 304-3.
- IF A POWER POLE IS WITHIN THREE FEET OF THE SEWER, THE SEWER SHALL BE ENCASED, PER S-23, CASE 2, TWO FEET ON EACH SIDE FROM THE POINT OF INTERFERENCE.
- IF DURING THE COURSE OF CONSTRUCTION IT IS DETERMINED THAT THERE IS LESS THAN FOUR FEET OF COVER OVER THE TOP OF A MAIN LINE OR HOUSE LATERAL V.C.P. SEWER WHICH IS NOT INDICATED ON THE PLANS, THE PIPE SHALL BE ENCASED PER S-23, CASE 2, UNLESS OTHERWISE APPROVED BY THE COUNTY ENGINEER.
- ALL JOINTS BETWEEN CASE IRON PIPE AND VITRIFIED CLAY PIPE SHALL BE MADE WITH A RUBBER SLAVE JOINT, TYPE "C" OR "D", (WITH RUBBERING) AS NECESSARY PER STANDARD SPECIFICATIONS AND SPECIAL PROVISIONS.
- SEWERS TO BE TRENCH FOR GRADE PER SECTION 304-1.9 OF THE STANDARD SPECIFICATIONS AND SPECIAL PROVISIONS. REINFORCE ALL TRENCHES WITHIN PAVED AREAS TO MEET L.A. COUNTY ROAD DEPT. OR CALIFORNIA STATE HIGHWAY REQUIREMENTS IN ACCORDANCE WITH PERMITS.
- FULL COMPLIANCE WITH SECTION 304-1.8 OF THE SPECIAL PROVISIONS WILL BE REQUIRED FOR BACKFILL IN STREETS. CERTIFICATION OF BACKFILL COMPOSITION AND SAND EQUIVALENT BY A QUALIFIED REGISTERED TESTING LABORATORY SHALL BE PROVIDED BY THE PRIVATEER FROM THE ISSUANCE OF A CERTIFICATE OF PARTIAL ACCEPTANCE.
- IN CASE OF 15" DIAMETER PIPES OR SMALLER, A.B.S. COMPOSITE PIPE MAY BE USED IN LIEU OF V.C.P. IF IT CONFORMS TO THE CONDITIONS OF USAGE SET FORTH IN PART IV OF THE SPECIAL PROVISIONS FOR THE CONSTRUCTION OF SANITARY SEWERS. CLEARANCES OF A COMPOSITE PIPE CANNOT BE USED TO COMPENSATE FOR VARIATIONS IN GRADE BETWEEN STATIONS. CLEARANCES OF 18" AND 24" BETWEEN STATIONS 11+00 & 12+00 ON PAGES 7 & 8 RESPECTIVELY.

PROFILE, ALIGNMENT AND GRADE OF
SANITARY SEWERS PAGE 1
 TO BE CONSTRUCTED IN
TRACT No. 37572
AND LOST CANYON ROAD AND OTHER R/W'S
PRIVATE CONTRACT NO. 9768 R

W.S. 62
 9 SHEETS, 18 PAGES
 49293

SCALE: VERT. 1" = 4'
 HORIZ. 1" = 40'
 NOVEMBER, 1979

PREPARED IN THE OFFICES OF
ENGINEERING SERVICE CORPORATION
 4676 ADMIRALTY WAY, SUITE 933 MARINA DEL REY, CA. 90291
 TEL 213/812-4040
 BY: [Signature]
 REG. C. E. No. 13095

THE FOLLOWING LATEST REVISED STANDARD PLANS ON FILE IN THE OFFICE OF THE COUNTY ENGINEER SHALL APPLY IN THE CONSTRUCTION OF THIS PROJECT:

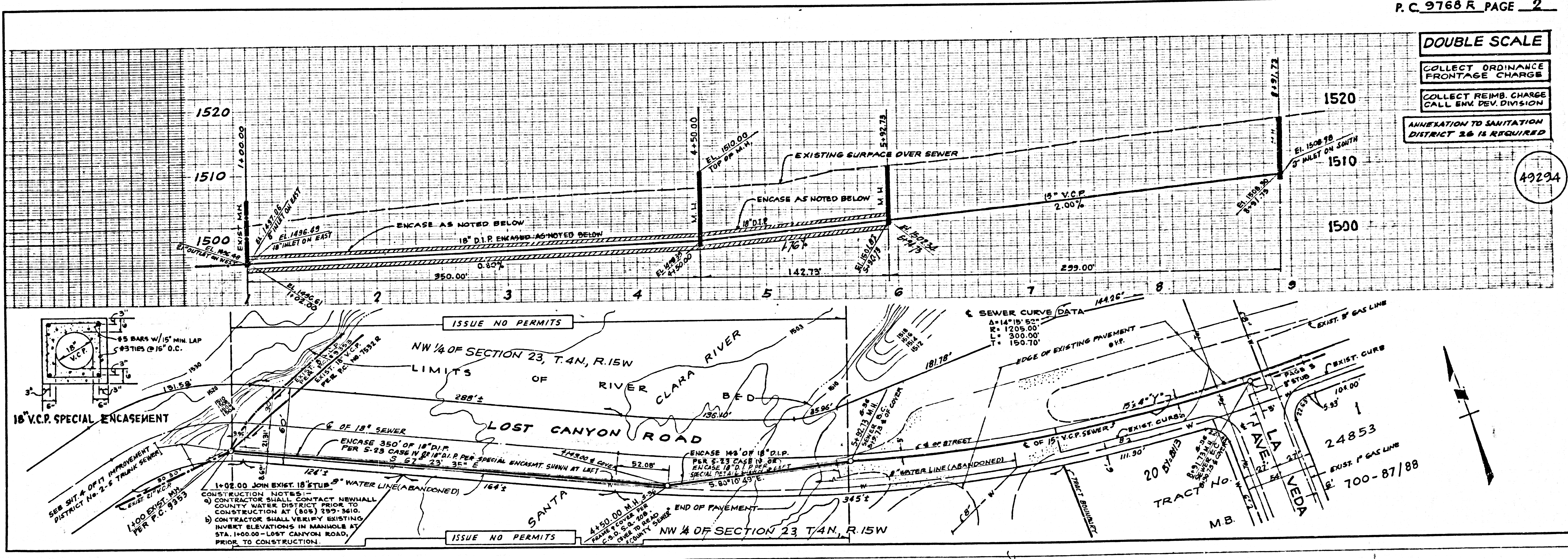
LEGEND	5-1
MINIMUM PUBLIC SAFETY REQUIREMENTS	5-2
BRICK MANHOLE	5-3
STANDARD MANHOLE WITH BRICKING FOR SEWER PIPE	5-4
CRADLING AND ENCASEMENT	5-5
WYS OR THE SUPPORT	5-6
ALLOWABLE TRENCH WIDTHS	5-7
LOADING MANHOLE FRAMES AND COVERS	5-8
STD. PRESSURE MAN. FRAME & COVER	S.A. 208
NON-REINFORCED PRECAST CONCRETE MANHOLES	S-3A

NO CONNECTION FOR THE DISPOSAL OF INDUSTRIAL WASTES SHALL BE MADE TO SEWERS, EITHER ON THESE OR OTHER UNITS. A PERMIT FOR INDUSTRIAL WASTE WATER DISCHARGE HAS BEEN ISSUED BY THE SANITATION DISTRICTS FOR SAID CONNECTION.

COUNTY OF LOS ANGELES, CALIFORNIA
 STEPHEN J. MOONEY, COUNTY ENGINEER
 APPROVED: [Signature] 6-12-80
 CHECKED: [Signature] 6/12/80
 REG. C.E. NO. 16783

WALTER E. GARRISON, CHIEF ENGINEER
 CO. ENGINEER NO. 26
 APPROVED: [Signature] 6/12/80
 NEWHALL COUNTY WATER DISTRICT
 APPROVED: [Signature] 6/12/80
 REG. C.E. NO. 16783

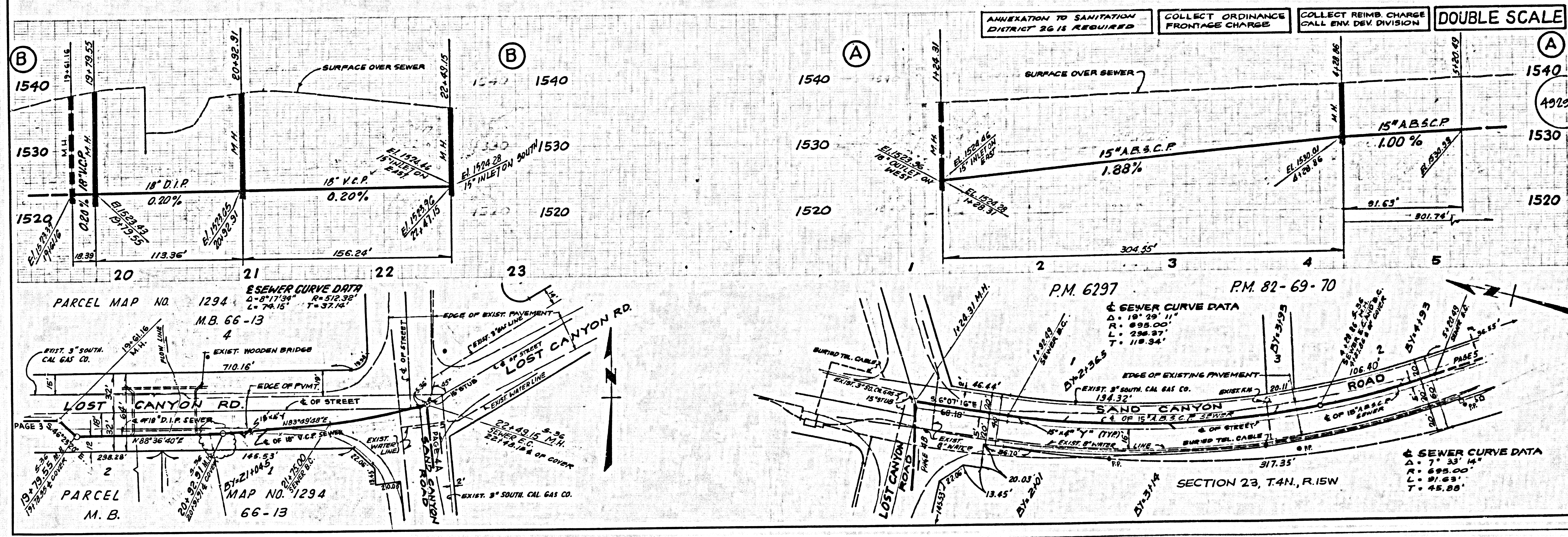
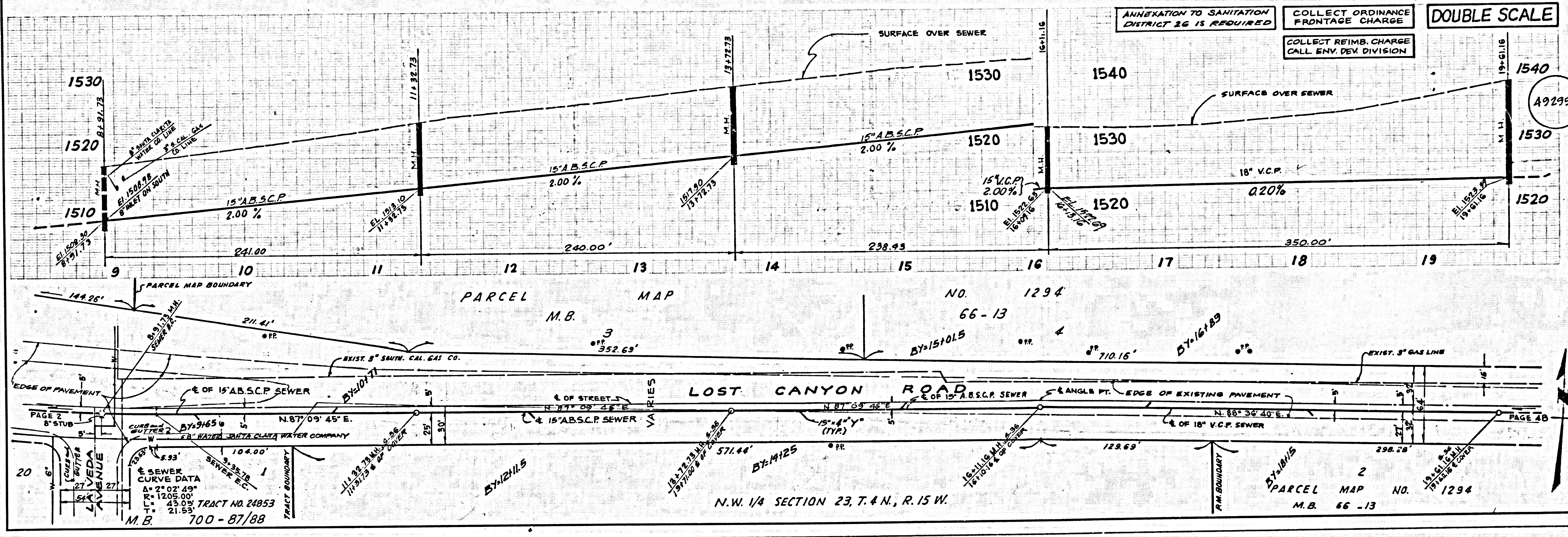
SANTA CLARITA VALLEY BLDG. DIST. 8-2

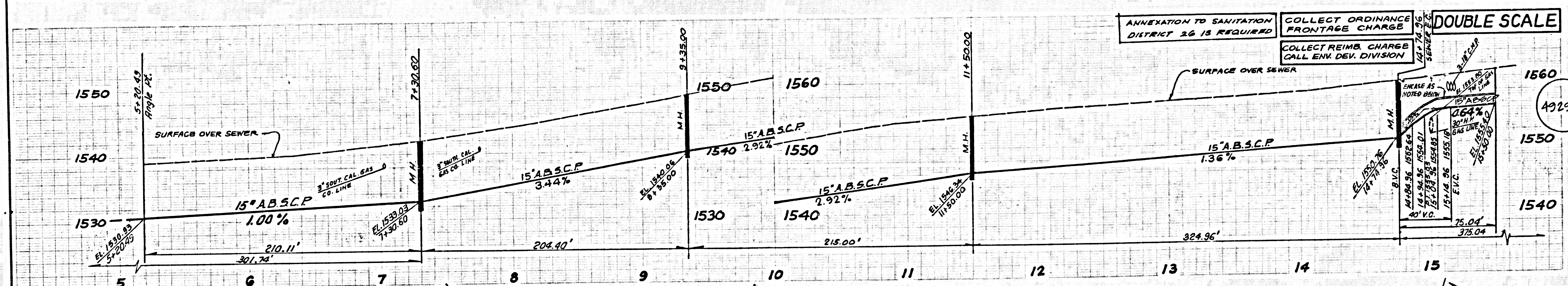


P.C. 9768 R PAGE 2

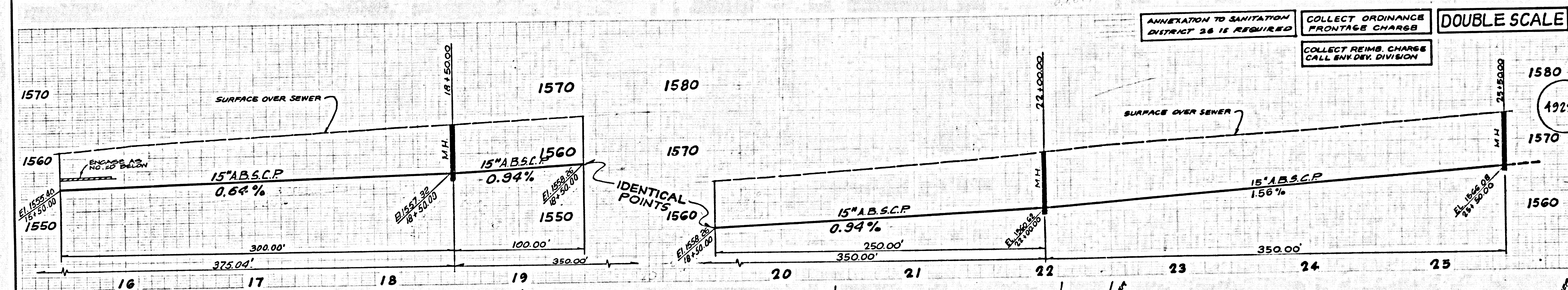
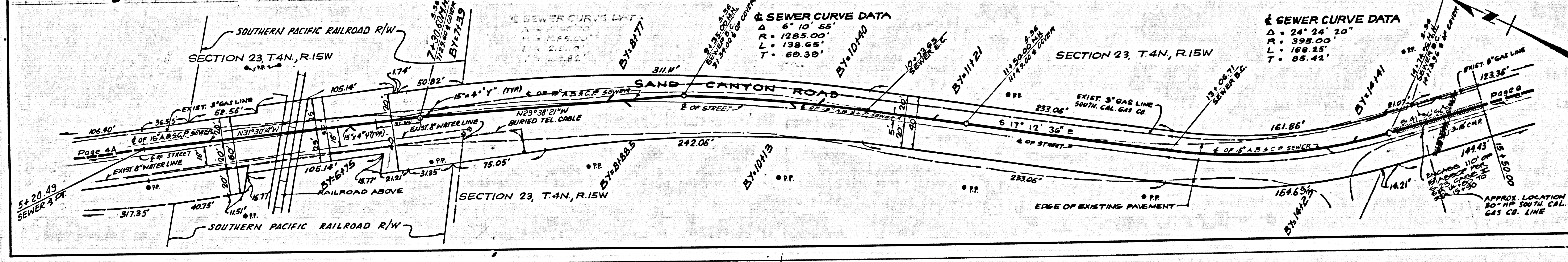
DOUBLE SCALE
 COLLECT ORDINANCE FRONTAGE CHARGE
 COLLECT REIMB. CHARGE CALL ENV. DEV. DIVISION
 ANNEXATION TO SANITATION DISTRICT 2 & IS REQUIRED

49294

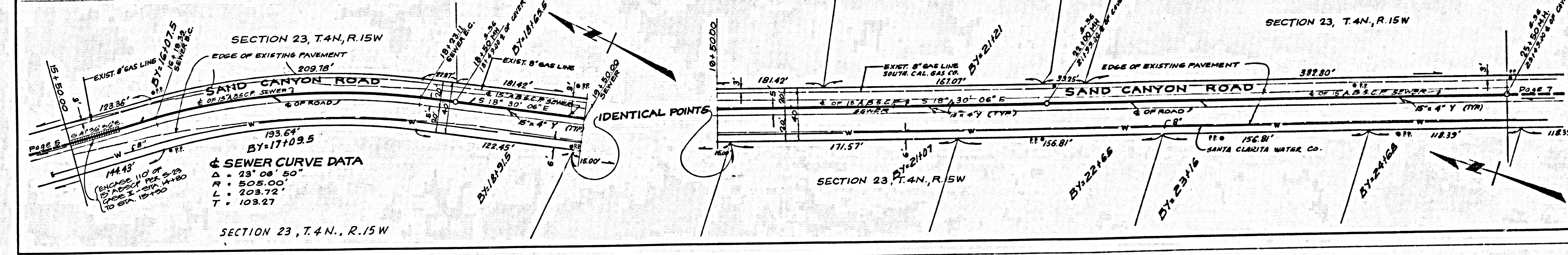


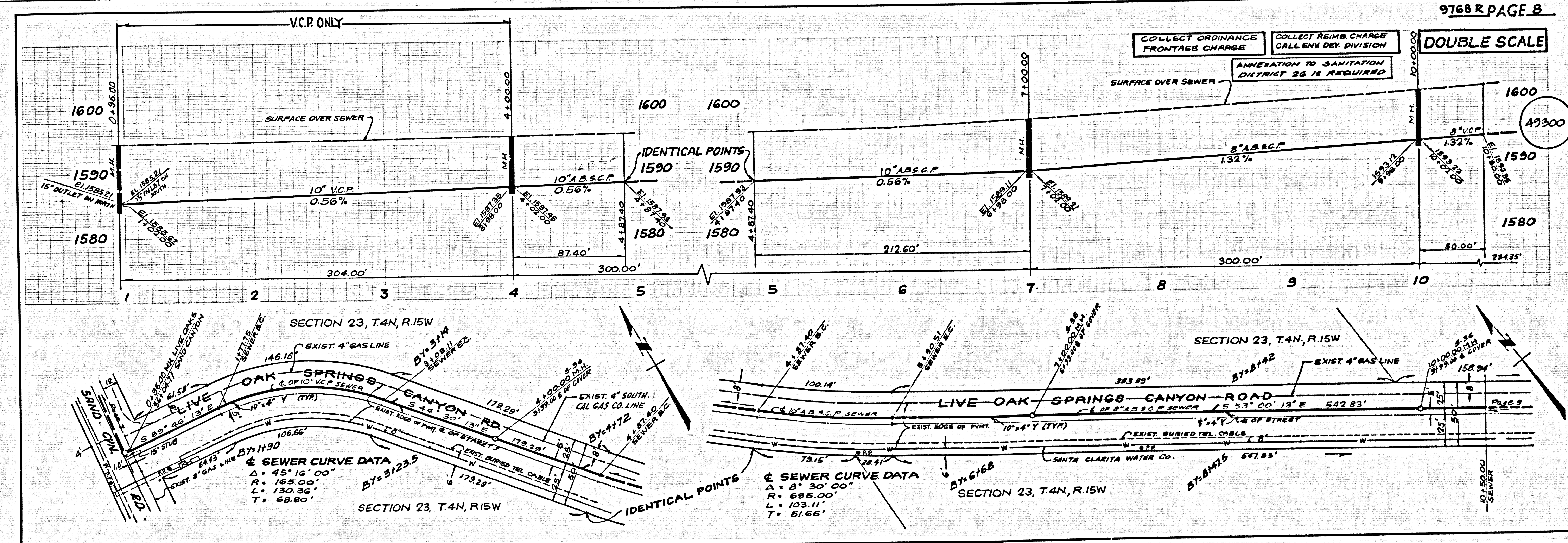
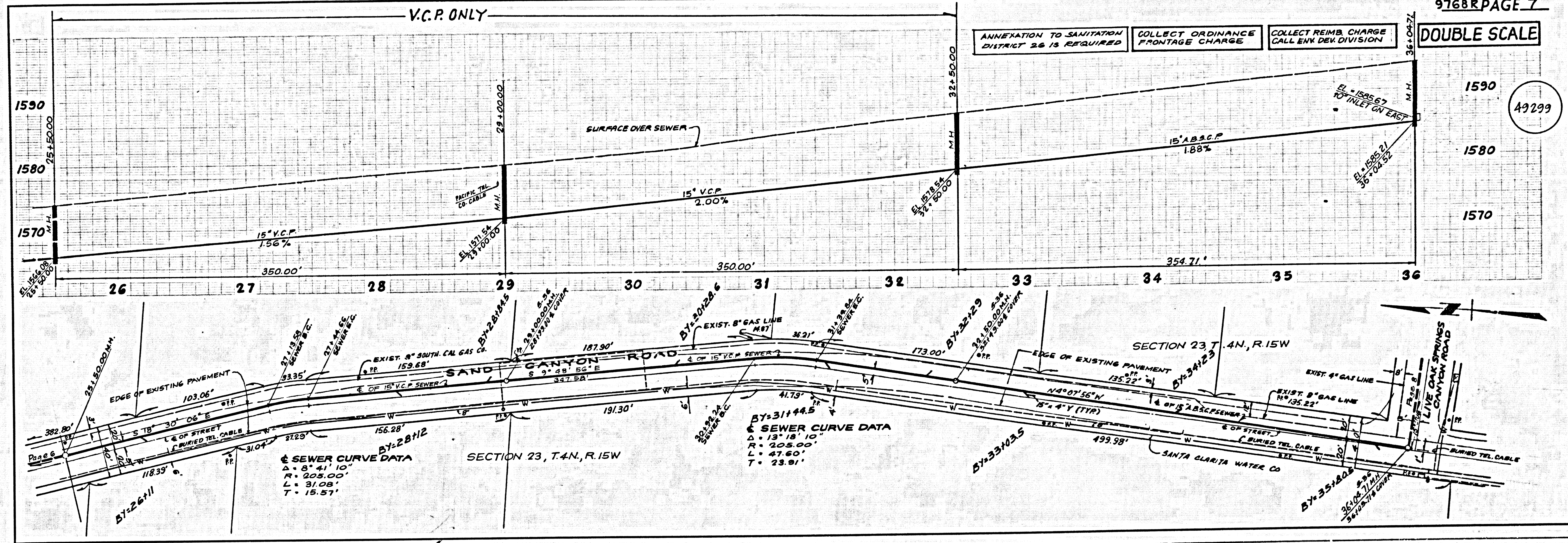


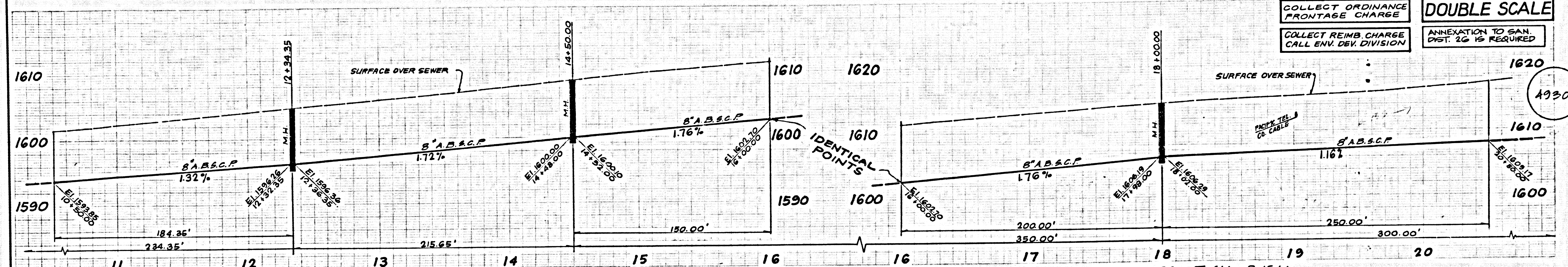
ANNEXATION TO SANITATION DISTRICT 26 IS REQUIRED
 COLLECT ORDINANCE FRONTAGE CHARGE
 COLLECT REIMB. CHARGE CALL ENV. DEV. DIVISION



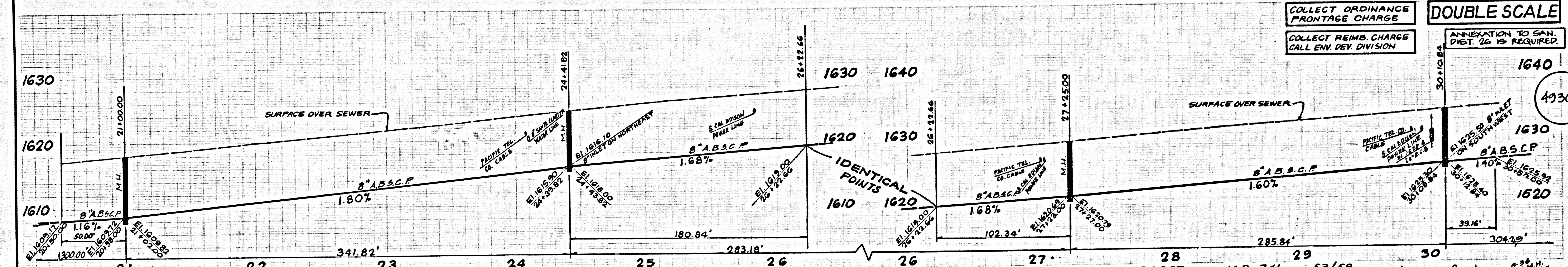
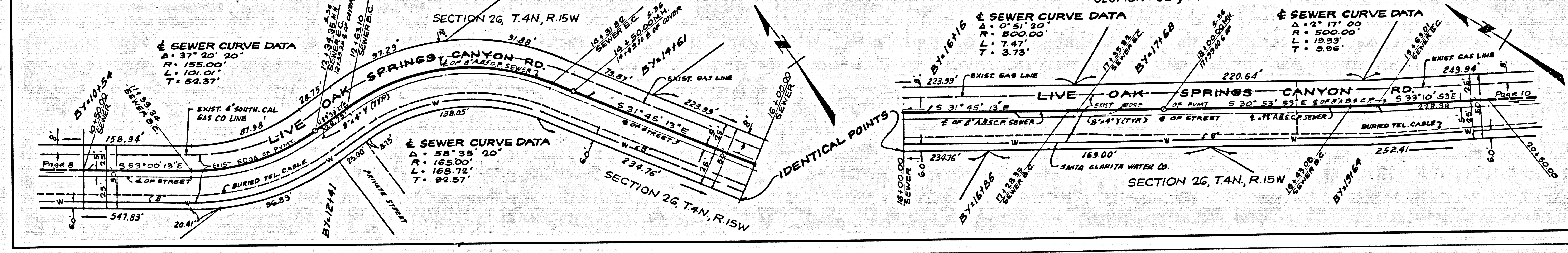
ANNEXATION TO SANITATION DISTRICT 26 IS REQUIRED
 COLLECT ORDINANCE FRONTAGE CHARGE
 COLLECT REIMB. CHARGE CALL ENV. DEV. DIVISION



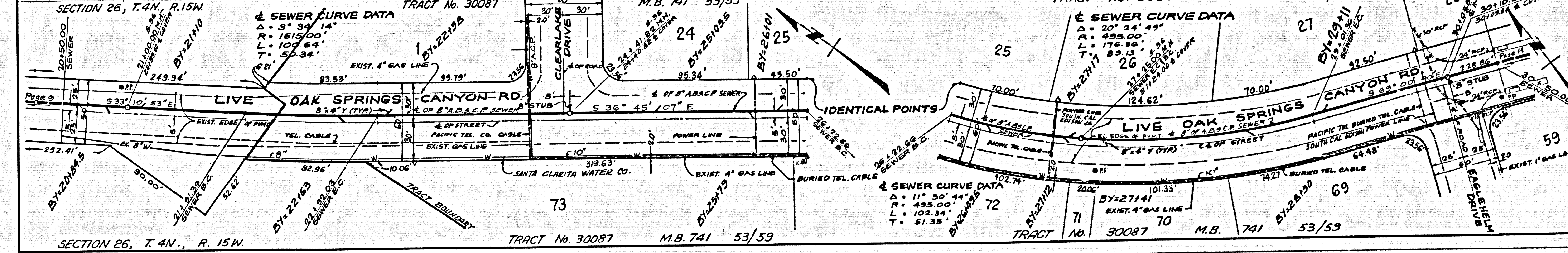




COLLECT ORDINANCE FRONTAGE CHARGE
 COLLECT REIMB. CHARGE CALL ENV. DEV. DIVISION
DOUBLE SCALE
 ANNEXATION TO SAN. DIST. 26 IS REQUIRED



COLLECT ORDINANCE FRONTAGE CHARGE
 COLLECT REIMB. CHARGE CALL ENV. DEV. DIVISION
DOUBLE SCALE
 ANNEXATION TO SAN. DIST. 26 IS REQUIRED



DOUBLE SCALE

COLLECT ORDINANCE FRONTAGE CHARGE

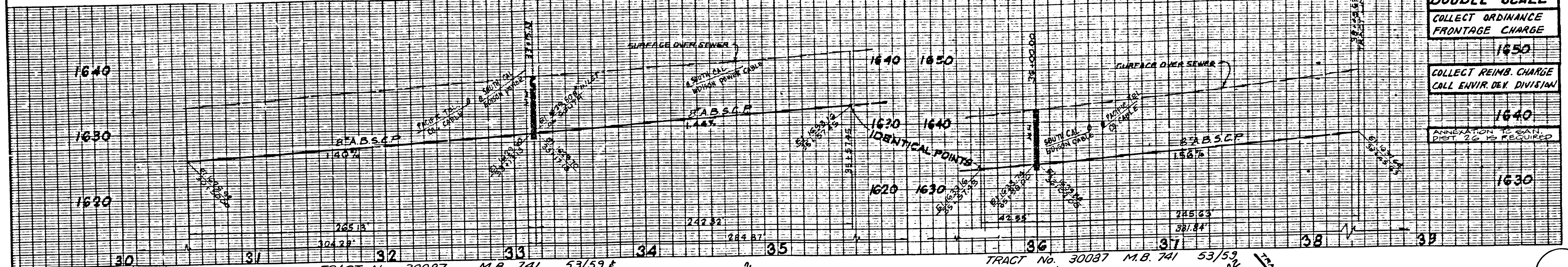
1450

COLLECT REIMB. CHARGE CALL ENVIR. DEV. DIVISION

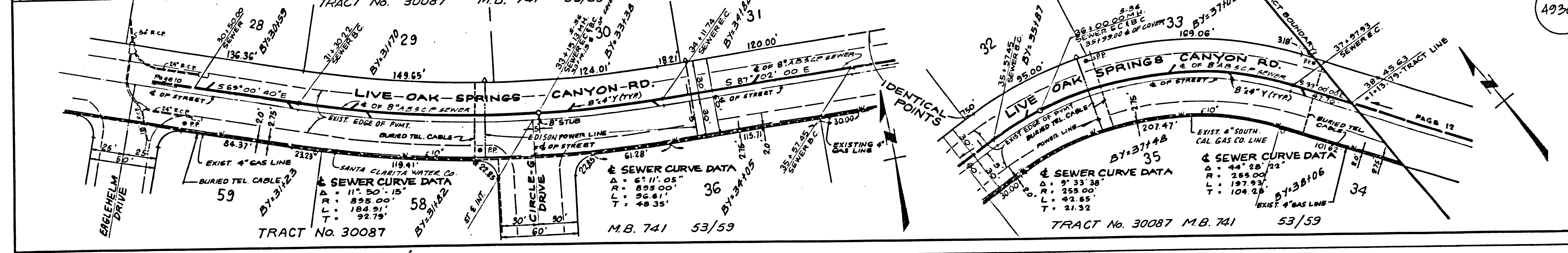
1640

ANNEXATION TO SANIT. DIST. 26 IS REQUIRED

1630

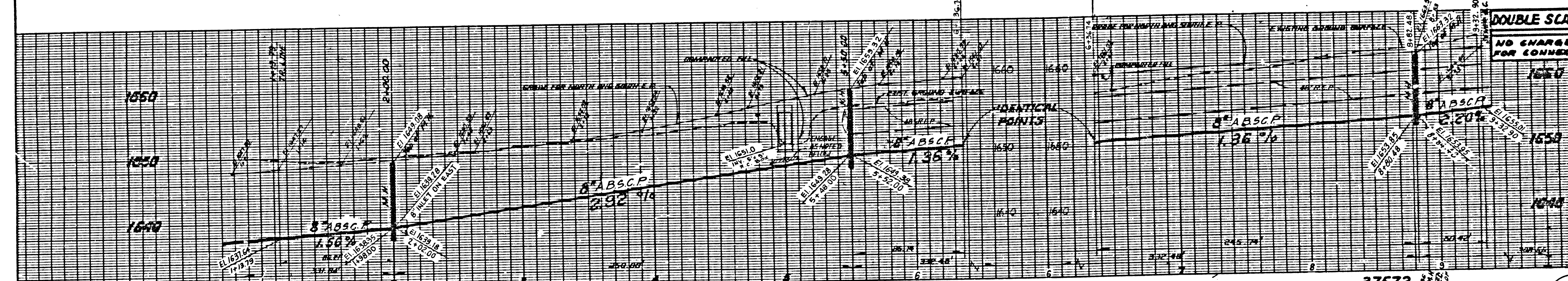


49303

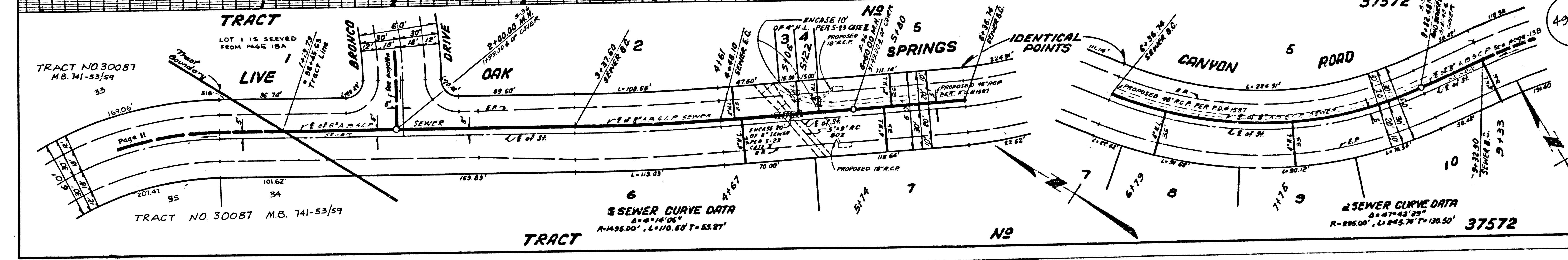


DOUBLE SCALE

NO CHARGE FOR CONNECTION

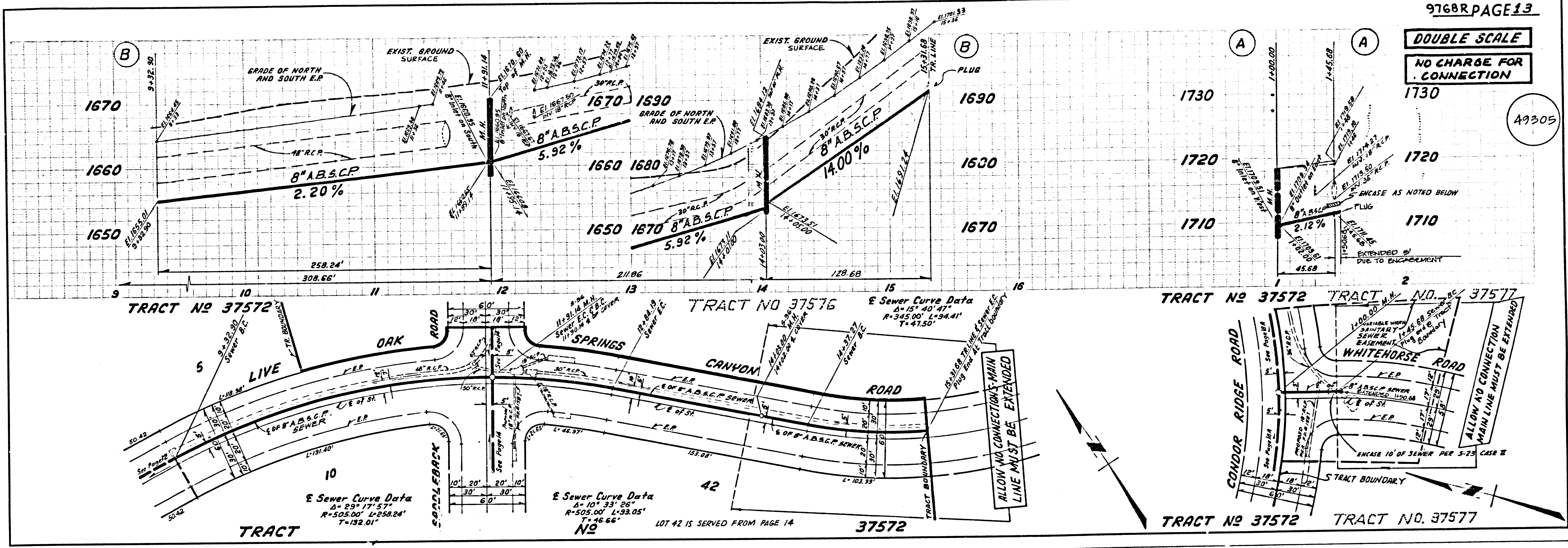


49304



DOUBLE SCALE
NO CHARGE FOR CONNECTION

A9305



DOUBLE SCALE
NO CHARGE FOR CONNECTION

A9306

