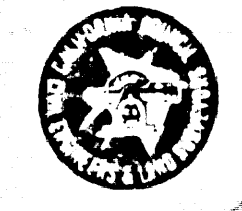


B.M. C.G. 3908 ELEV. 543.398
 1. FT. IN C.B. R.F.T. N. B.C.R. 65 FT.
 N. 8 30 FT. E. 4 INT. FULLERTON
 ROAD & SENTENO STREET
 OTTERBEIN QUAD. 1975

PRIVATE ENGINEER'S NOTICE TO CONTRACTORS:
 THE EXISTENCE AND APPROXIMATE LOCATIONS OF EXISTING UNDERGROUND UTILITIES OR STRUCTURES SHOWN ON THESE PLANS WERE DETERMINED BY A SEARCH OF AVAILABLE PUBLIC RECORDS. TO THE BEST OF OUR KNOWLEDGE THERE ARE NO EXISTING UNDERGROUND UTILITIES OR STRUCTURES EXCEPT AS SHOWN ON THESE PLANS. THE CONTRACTOR IS REQUIRED TO TAKE DUE PRECAUTIONARY MEASURES TO PROTECT THE EXISTING UNDERGROUND UTILITIES AND STRUCTURES SHOWN HEREON AND ANY OTHER EXISTING UNDERGROUND UTILITIES OR STRUCTURES NOT OF RECORD OR NOT SHOWN ON THESE PLANS.
 Robert R. Flannery 1-7-1980
 ROBERT R. FLANNERY R.C.E. NO. 11849 DATE

Contractor agrees that he shall assume sole and complete responsibility for job site conditions during the course of construction of this Project, including safety of all persons and property; that this requirement shall apply continuously and not be limited to normal working hours; and that the Contractor shall defend, indemnify and hold the Owner and the Engineer harmless from any and all liability, real or alleged, in connection with the performance of work on this Project, excepting for liability arising from the sole negligence of the Owner or the Engineer.

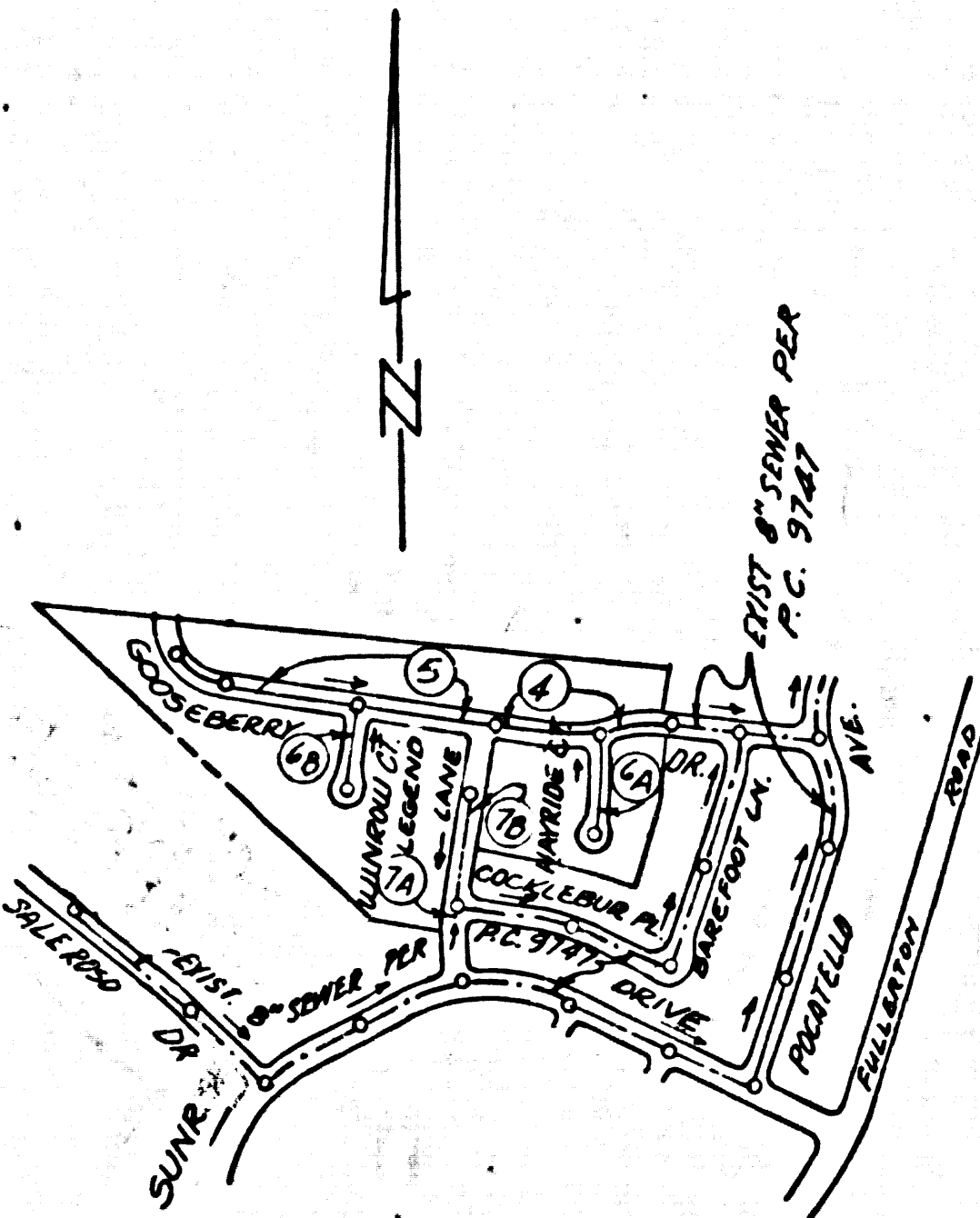


- 17. A.B.S. SOLID WALL PIPE MUST BE USED FOR HOSE AND HOUSE LATERAL CONNECTIONS TO A.B.S. COMPANY'S FURNISHED SEWER PIPE.
- 18. A.B.S. COMPPOSITE PIPE SHALL BE INSTALLED IN ACCORDANCE WITH THE TABLE IN SECTION 83 OF PART 12 OF THE SPECIAL SPECIFICATIONS.
- 19. PIPE DEFLECTION FITTINGS ARE REQUIRED FOR BRANCHES OF CONDUIT LESS THAN 200 FEET WHEN USING 8" A. S. C. P.

REVISION NO. 1 MARCH 24, 1983
 OMIT PAGES 2A, 2B, 3A AND 3B DUE TO TRACT PHASING. REVISED INDEX MAP ACCORDINGLY.
 Ralph David Deist 16883 4/19/83
 APPROVED BY R.C.E. NO. DATE

NO CONNECTION FOR THE DISPOSAL OF INDUSTRIAL WASTES SHALL BE MADE TO SEWERS SHOWN ON THESE DRAWINGS UNTIL A PERMIT FOR INDUSTRIAL WASTEWATER DISCHARGE HAS BEEN ISSUED BY THE SANITATION DISTRICTS FOR SAID CONNECTION.
 BEFORE BREAKING INTO OR CONSTRUCTION ON A COUNTY SANITATION DISTRICT SEWER AND PRIOR TO FINAL ACCEPTANCE OF THE PROJECT, SANITATION DISTRICT INSPECTOR SHALL BE NOTIFIED BY PHONE - 962-8605, 638-1161 SO THAT REQUIRED INSPECTION CAN BE MADE.

ISSUE NO PERMITS UNTIL P.C. 9747 IS ACCEPTED



INDEX MAP
 Scale 1"=600'
 P.C. 9770

NOTE: NUMBERS IN CIRCLES INDICATE PAGE NUMBERS

DOUBLE SCALE GENERAL NOTES:

1. ELEVATIONS ARE IN FEET ABOVE U.S.C. & G.S. SEA LEVEL UNLESS OTHERWISE NOTED.
2. NO REVISIONS SHALL BE MADE IN THESE PLANS WITHOUT THE APPROVAL OF THE COUNTY ENGINEER.
3. NO REPRESENTATIVE OF THE COUNTY ENGINEER WILL SURVEY OR LAY OUT ANY PORTION OF THE WORK.
4. GRADES TO WHICH THIS IMPROVEMENT IS TO BE CONSTRUCTED ARE SHOWN ON PLANS AND PROFILES. GRADE POINTS FOR TOP OF CURB, CENTER LINE OF STREETS, OR CENTER LINE OF ALLEYS ARE SHOWN BY CIRCLES ON PROFILES. AT ALL POINTS BETWEEN DESIGNATED POINTS THE GRADE SHALL BE ESTABLISHED SO AS TO CONFORM TO A STRAIGHT LINE DRAWN BETWEEN SAID DESIGNATED POINTS.
5. THE PRIVATE ENGINEER SHALL FURNISH THE COUNTY ENGINEER WITH GRADE SHEETS AND STATIONING FOR ALL HOUSE LATERALS AND "T" OR "Y" BRANCHES AND SHALL PROVIDE STAKES FOR THEM AT THEIR PROPER LOCATIONS WITH STATIONING PLAINLY MARKED. ALL HOUSE LATERALS SHALL BE CONSTRUCTED IN A STRAIGHT ALIGNMENT AT RIGHT ANGLES FROM THE MAIN LINE SEWER EXCEPT AS SHOWN ON THE PLANS. HOUSE LATERALS FROM CHIMNEYS SHALL NOT HAVE AN ANGLE OF LESS THAN 45° WITH THE MAIN LINE SEWER. ANY CHANGE IN ALIGNMENT SHALL BE REQUESTED IN WRITING BY THE PRIVATE ENGINEER.
6. THE PRIVATE ENGINEER SHALL FURNISH THE HOUSE LATERAL DEPTH AT THE PROPERTY LINE BELOW THE TOP OF CURB ELEVATION FOR EACH HOUSE LATERAL ON THE GRADE SHEET.
7. BEFORE WORK CAN BE STARTED, THE CONTRACTOR MUST OBTAIN A PERMIT TO EXCAVATE IN COUNTY STREETS FROM THE L.A. COUNTY ROAD DEPT., DISTRICT OFFICE NO. 3, AND PAY A FEE TO THE COUNTY ENGINEER, 801 E. BONITA AVE., SAN ANTONIO REGIONAL OFFICE, TO COVER THE COST OF CONSTRUCTION INSPECTION AND RECORD PLANS.
8. IF WORK IS TO BE DONE IN A STATE HIGHWAY, A PERMIT MUST BE OBTAINED FROM THE STATE OF CALIFORNIA, DIVISION OF HIGHWAYS, 130 SOUTH SPRING STREET, LOS ANGELES, CALIFORNIA.
9. APPROVAL OF THIS PLAN BY THE COUNTY OF LOS ANGELES DOES NOT CONSTITUTE A REPRESENTATION AS TO THE ACCURACY OF THE LOCATION OF OR THE EXISTENCE OR NON-EXISTENCE OF ANY UNDERGROUND UTILITY PIPE, OR STRUCTURE WITHIN THE LIMITS OF THIS PROJECT. THIS NOTE APPLIES TO ALL PAGES.
10. REFER TO SECTION 7.10.1.1 OF THE STANDARD SPECIFICATIONS, REGARDING SAFETY ORDERS.
11. PRIOR TO THE RESUMPTION OF THE REQUIRED SEWER CONSTRUCTION PERMIT BY THE COUNTY ENGINEER, THE CONTRACTOR SHALL OBTAIN A PERMIT TO EXCAVATE FROM THE STATE OF CALIFORNIA, DEPARTMENT OF INDUSTRIAL RELATIONS, BUREAU OF INDUSTRIAL SAFETY, AND SHALL FILE A CERTIFICATE OF WORKERS COMPENSATION INSURANCE WITH THE COUNTY ENGINEER.
12. (C-75) INDICATES H. L. NOT TO BE BUILT UPSTREAM FROM THIS STATIONING.

CONSTRUCTION NOTES:

1. WORK SHALL BE CONSTRUCTED ACCORDING TO THE STANDARD SPECIFICATIONS FOR PUBLIC WORKS CONSTRUCTION (1979 EDITION WITH 1980 SUPPLEMENT) AND COUNTY ENGINEER SPECIAL PROVISIONS FOR THE CONSTRUCTION OF SANITARY SEWERS DATED SEPTEMBER 24, 1978 AND SHALL BE PROSECUTED ONLY IN THE PRESENCE OF THE COUNTY ENGINEER.
2. THE CONTRACTOR SHALL NOTIFY THE ENVIRONMENTAL DEPARTMENT BY TELEPHONE 893-228-2576 AT LEAST TWENTY-FOUR HOURS BEFORE STARTING ANY WORK UNDER THIS CONTRACT.
3. HOUSE LATERALS TO BE CONSTRUCTED WITH INVERTS AT PROPERTY LINE 6 FEET BELOW CURB GRADE EXCEPT AS NOTED.
4. WYE OR TEE BRANCHES MAY BE USED FOR CONNECTIONS TO MAINLINE SEWER EXCEPT AS NOTED.
5. ALL STRUCTURES SHALL BE EITHER BRICK MANHOLES PER 5.36 OR PRECAST CONCRETE MANHOLES PER 5.36, EXCEPT AS NOTED.
6. PROVIDE STAKES ON THE PROPERTY LINE OR PROPERTY LINE PRODUCED AT RIGHT ANGLES TO THE SEWER LINE AT THE CENTER LINE OF EACH MANHOLE.
7. MANHOLE TOPS IN UNIMPROVED AREAS OF WAY TO BE SIX INCHES ABOVE FINISHED GRADE.
8. VITRIFIED CLAY PIPE JOINTS SHALL BE TYPE "D", "E" OR "F" PER STANDARD SPECIFICATIONS SECTION 300-8.
9. IF A POWER POLE IS WITHIN THREE FEET OF THE SEWER, THE SEWER SHALL BE ENCASED, PER 5.33, CASE II, TWO FEET ON EACH SIDE FROM THE POINT OF INTERFERENCE.
10. IF DURING THE COURSE OF CONSTRUCTION IT IS DETERMINED THAT THERE IS LESS THAN FOUR FEET OF COVER OVER THE TOP OF A MAIN LINE OR HOUSE LATERAL V.C.P. SEWER WHICH IS NOT INDICATED ON THE PLANS, THE PIPE SHALL BE ENCASED PER 5.33, CASE II UNLESS OTHERWISE NOTED BY THE COUNTY ENGINEER.
11. ALL JOINTS BETWEEN CAST IRON PIPE AND VITRIFIED CLAY PIPE SHALL BE MADE WITH A RUBBER SLEEVE JOINT, TYPE "C" OR "D", WITH BUSHING AS NECESSARY PER STANDARD SPECIFICATIONS SECTION 300-8 WITH APPROVED FITTINGS.
12. SEWERS TO BE LINED FOR LEAKAGE PER SECTION 300-4.6 OF THE STANDARD SPECIFICATIONS AND SPECIAL PROVISIONS.
13. RESURFACE ALL TRENCHES WITHIN PAVED AREAS TO MEET L.A. COUNTY ROAD DEPT. OR CALIFORNIA STATE HIGHWAY REQUIREMENTS IN ACCORDANCE WITH PERMITS.
14. FULL COMPLIANCE WITH SECTION 306-1.3.5 OF THE SPECIAL PROVISIONS WILL BE REQUIRED FOR BACKFILL IN STREETS. CERTIFICATION OF BACKFILL COMPACTION AND SAND EQUIVALENTS BY A QUALIFIED, REGISTERED TESTING LABORATORY SHALL BE PROVIDED BY THE PERMITTEE PRIOR TO THE ISSUANCE OF A CERTIFICATE OF PARTIAL ACCEPTANCE.
15. FULL COMPLIANCE WITH PART III OF THE SPECIAL PROVISIONS IS REQUIRED FOR THE INSTALLATION OF A.B.S. COMPOSITE PIPE.
16. MANHOLE WASTEWATER STOP GUARDS AND CLEANERS ARE REQUIRED FOR THE CONSTRUCTION OF A.B.S. COMPOSITE PIPE TO FINISHABLE STRUCTURES.

PROFILE, ALIGNMENT AND GRADE OF
SANITARY SEWERS PAGE 1
 TO BE CONSTRUCTED IN
TRACT NO. 37850

PRIVATE CONTRACT NO. 9770

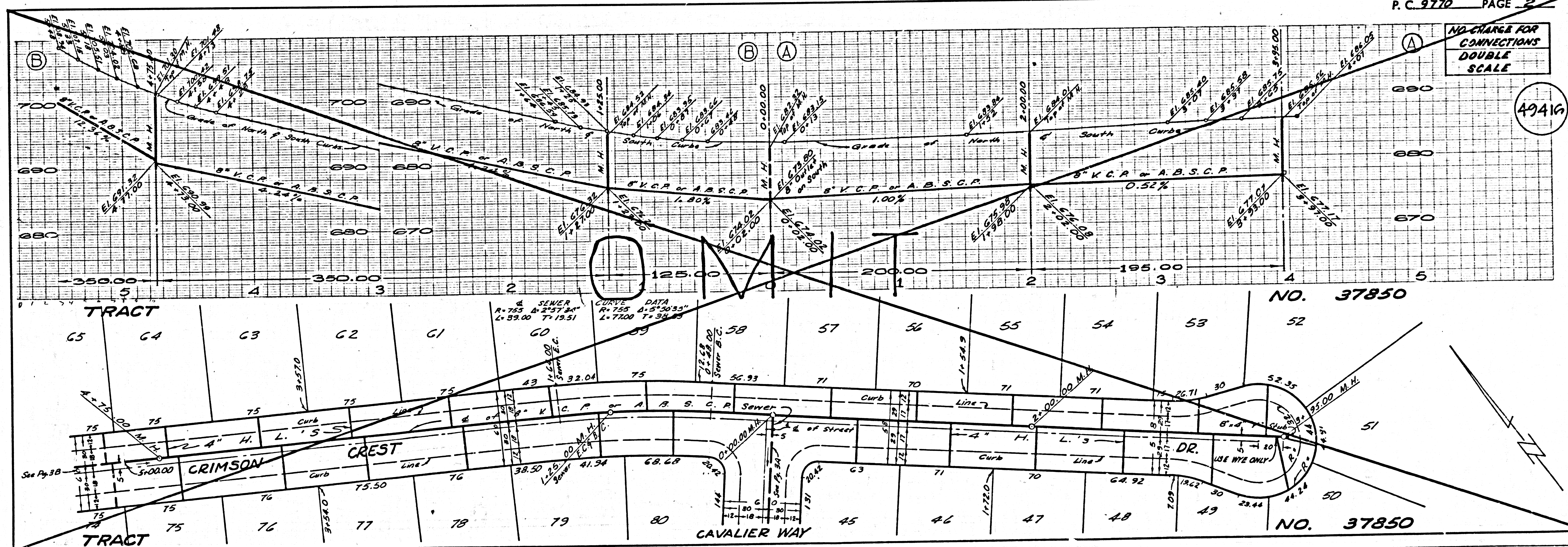
W.S. 38 C-5
 4 SHEETS, 7 PAGES
 SCALE: VERT. 1"=8'
 HORIZ. 1"=80'
 OCT., 1979
 PREPARED IN THE OFFICES OF
KEMMERER ENGINEERING CO. INC.
 6705 SO. PAINTER AVE. WHITTIER CA. 90608 (213) 698-0791
 BY: Robert R. Flannery
 REG. C. E. NO. 11849

49415

THE FOLLOWING LATEST REVISED STANDARD PLANS ON FILE IN THE OFFICE OF THE COUNTY ENGINEER SHALL APPLY IN THE CONSTRUCTION OF THIS PROJECT.

SECTION	DESCRIPTION
5-1	MINIMUM PUBLIC SAFETY REQUIREMENTS
5-2	BRICK MANHOLE
5-3	STANDARD MANHOLE STEP
5-31	BOXING FOR SEWER PIPE
5-32	CRADLING AND ENCASEMENT
5-33	WYE OR TEE SUPPORT
5-34	ALLOWABLE TRENCH WIDTHS
5-35	LOCKING MANHOLE FRAMES AND COVERS
5-36	NON-REINFORCED PRECAST CONCRETE MANHOLE
5-37	BEDDING REQUIREMENTS FOR PLASTIC PIPE

COUNTY OF LOS ANGELES, CALIFORNIA
 STEPHEN J. KOONCE, COUNTY ENGINEER WALTER E. GARRISON, CHIEF ENGINEER
 APPROVED: Samuel H. Miller 10/1/80 APPROVED: Ralph D. Deist 10/6/80
 SAN ANTONIO REGIONAL ENGINEER (DATE) SAN ANTONIO REGIONAL ENGINEER (DATE)
 CHECKED: Ralph David Deist 10/6/80
 NO. C.E. NO. 16883
 L.A. PUENTE BLDG. DIST. 2.02



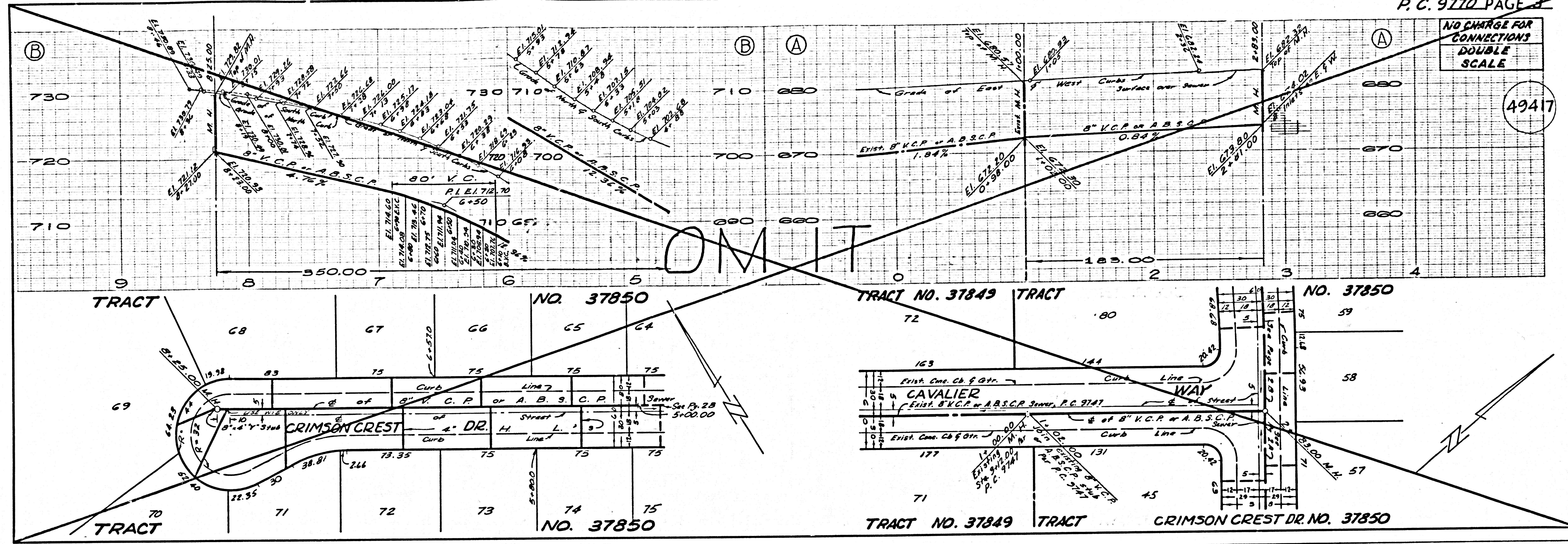
P.C. 9770 PAGE 2

NO CHANGE FOR CONNECTIONS
 DOUBLE SCALE

49416

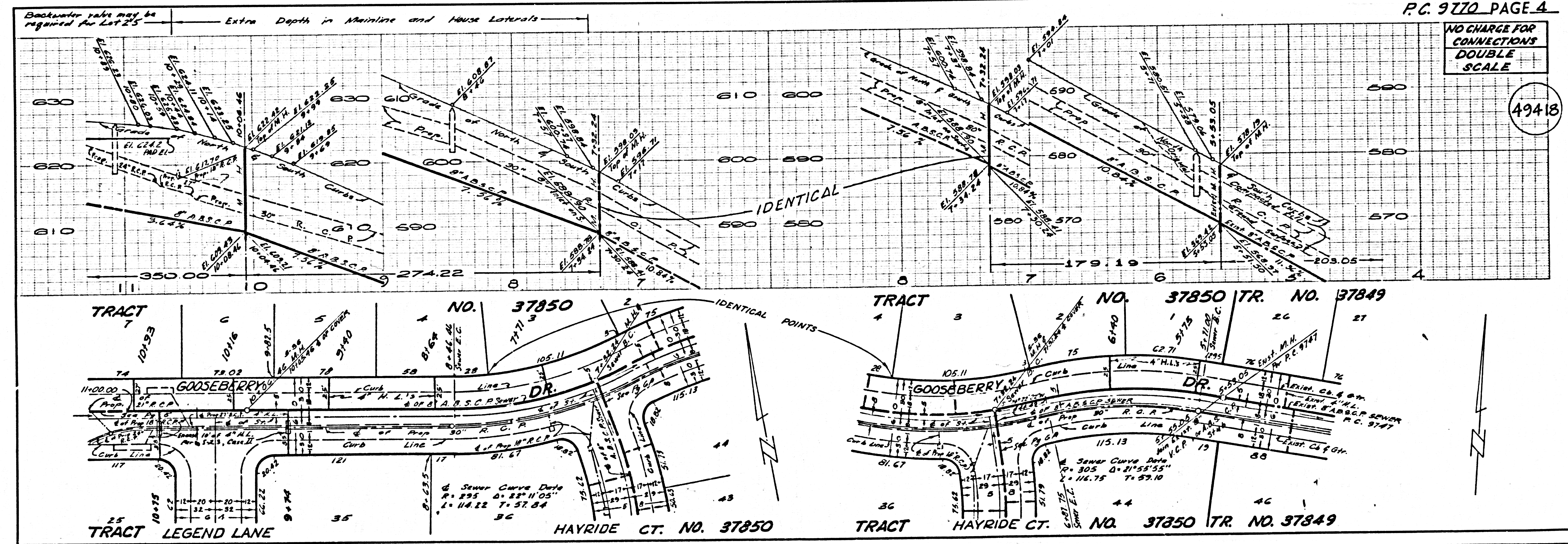
NO CHARGE FOR CONNECTIONS DOUBLE SCALE

49417



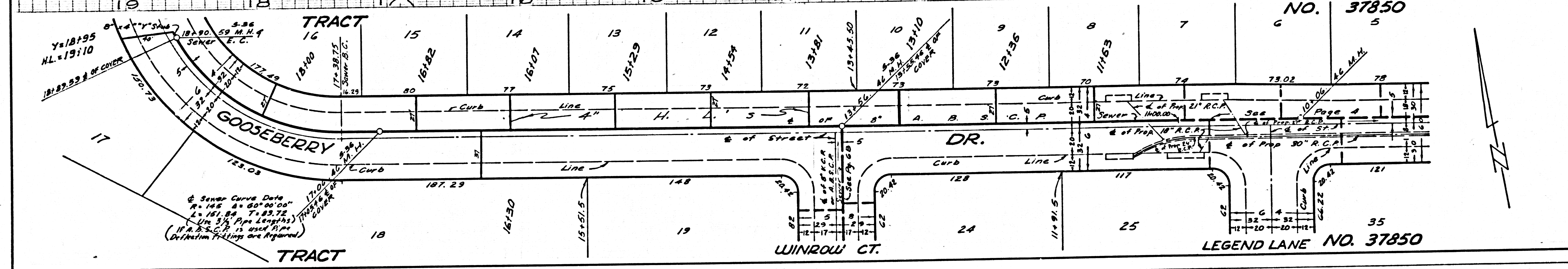
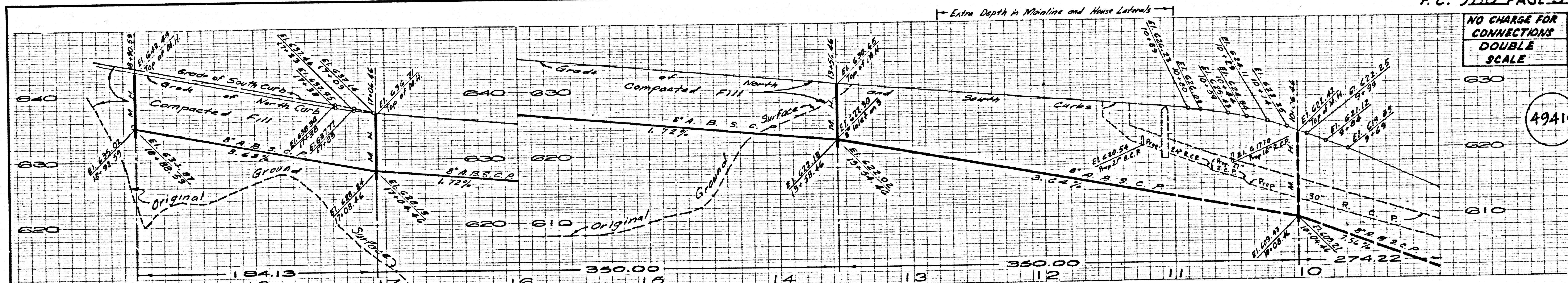
NO CHARGE FOR CONNECTIONS DOUBLE SCALE

49418



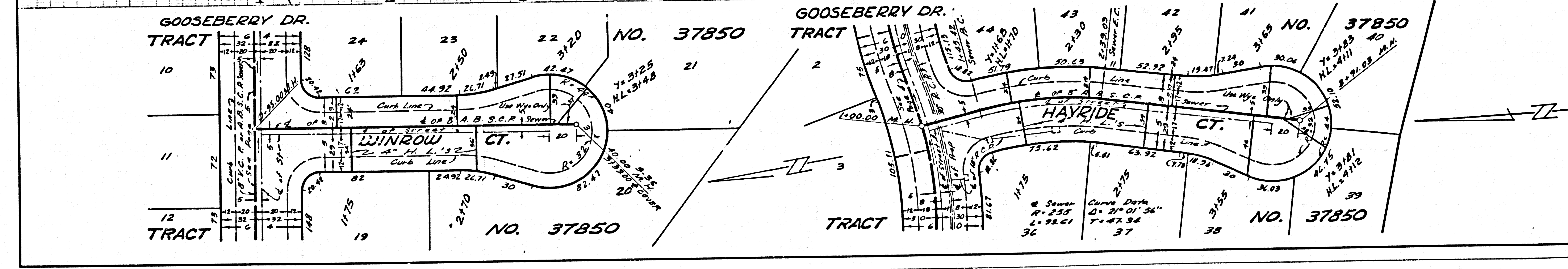
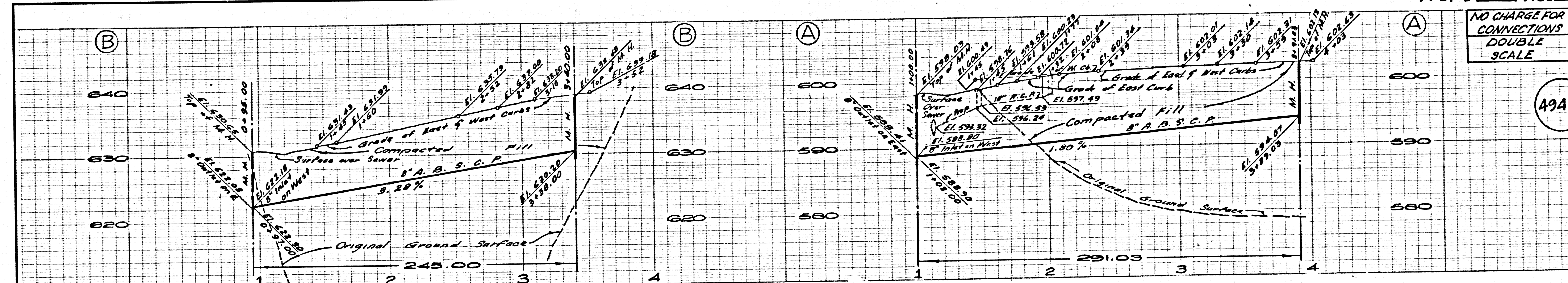
NO CHARGE FOR CONNECTIONS DOUBLE SCALE

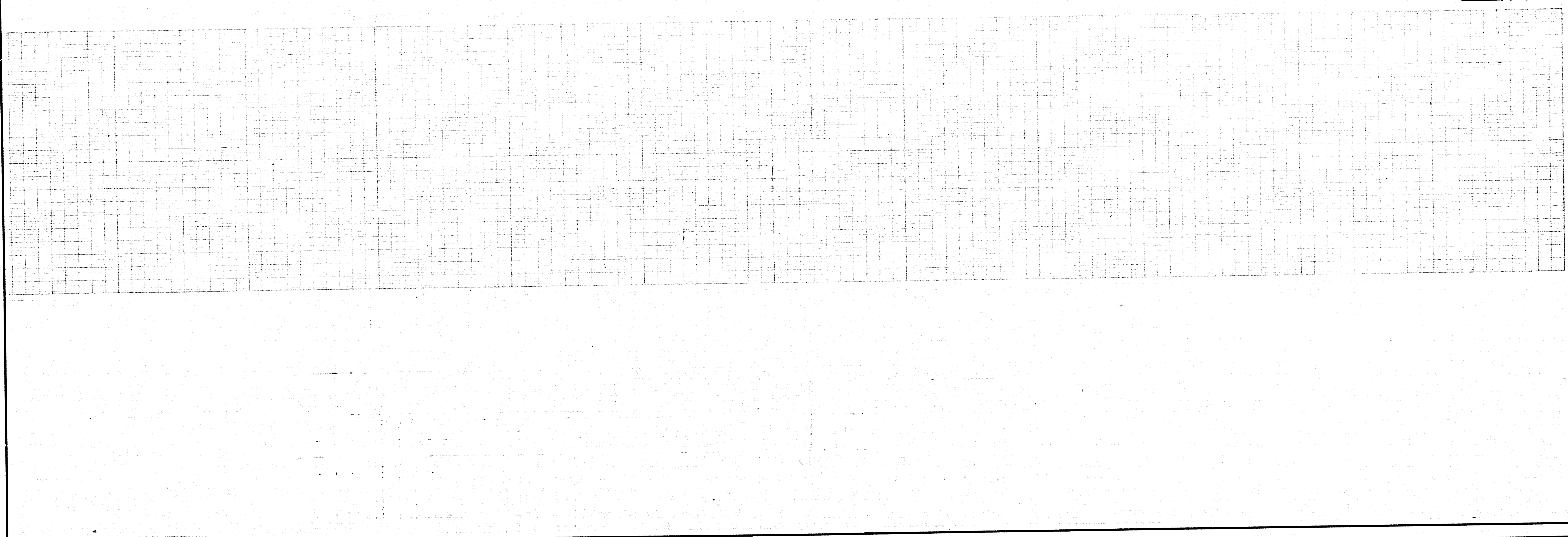
49419



NO CHARGE FOR CONNECTIONS DOUBLE SCALE

49420





NO CHARGE FOR CONNECTIONS
DOUBLE SCALE

49421

