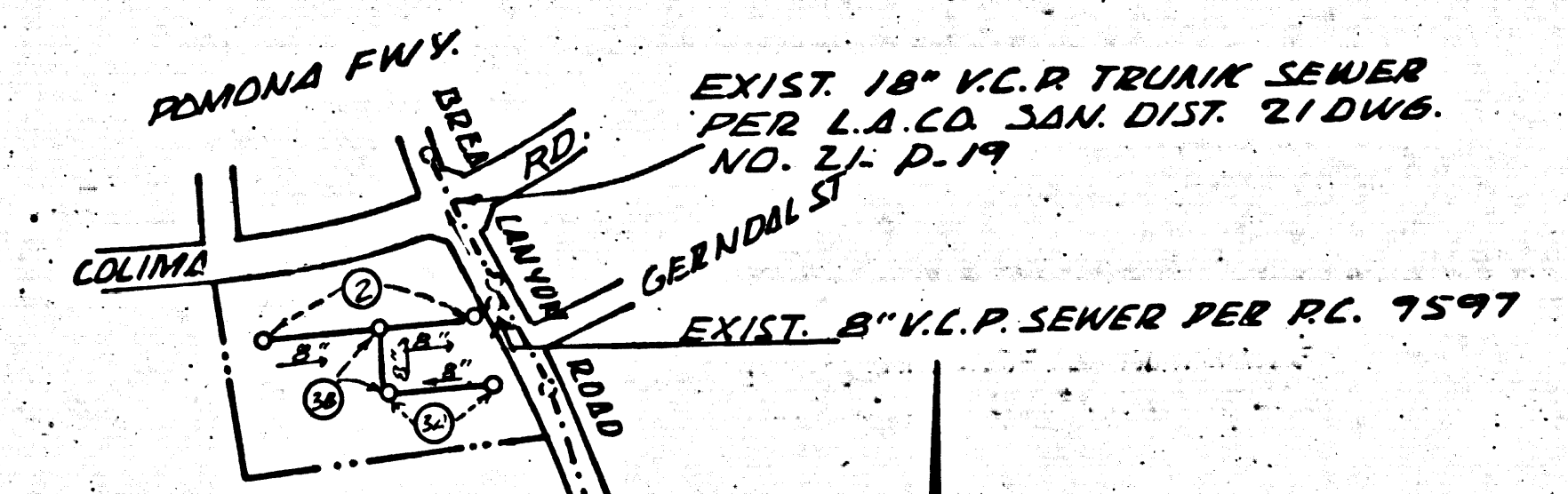


TO BE CONSTRUCTED IN
DIAMOND CREEK VILLAGE CENTER
 PRIVATE CONTRACT NO. 9772

W.S. 39-B,3
 2 SHEETS, 3 PAGES (48140)
 SCALE: VERT. 1"=4' HORIZ. 1"=40'
 JANUARY, 1980
 PREPARED IN THE OFFICES OF
TAIT & ASSOCIATES
 900 OROVILLO LANE, ATORBITON, CA 92801
 (714) 870-1253 (213)-860-6595
 BY: *Bruce E. Blank*
 REG. C.E. No. 26492

B.M. CG 3803 ELEV. 580.268
 R.O.B.M. TAG IN C.B. SAFT N/BCR
 4.42 FT. N. & 125 FT. N/CL INT
 OLD BREA CYN. RD. & COLIMA RD.
 OTTERBEIN QUAD. 1972



INDEX MAP
"DIAMOND CREEK VILLAGE CENTER"
 SCALE 1"=400'
 PC 9772
 NOTE: NUMBERS IN CIRCLES INDICATE
 PAGE NUMBERS

CONSTRUCTION NOTES CONT'D.
 ACCEPTABLE CERTIFICATION OF SUCH CONSTRUCTION SHALL BE SUBMITTED TO THE
 ENVIRONMENTAL DEVELOPMENT DIVISION

15.

GENERAL NOTES:

1. EXCAVATIONS ARE TO BE MADE IN ACCORDANCE WITH THE STANDARD SPECIFICATIONS FOR PUBLIC WORKS CONSTRUCTION (1979 EDITION) AND COUNTY ENGINEER SPECIAL PROVISIONS FOR THE CONSTRUCTION OF SANITARY SEWERS DATED SEPTEMBER 1976.
2. NO REPRESENTATIVE OF THE COUNTY ENGINEER WILL SURVEY OR LAY OUT ANY PORTION OF THE WORK.
3. GRADES TO WHICH THIS IMPROVEMENT IS TO BE CONSTRUCTED ARE SHOWN ON PLANS AND PROFILES. GRADE POINTS FOR TOP OF CURBS, CENTER LINE OF STREETS OR CENTER LINE OF ALLEYS ARE SHOWN BY CIRCLES ON PROFILES. AT ALL POINTS BETWEEN DESIGNATED POINTS THE GRADE SHALL BE ESTABLISHED SO AS TO CONFORM TO A STRAIGHT LINE DRAWN BETWEEN SAID DESIGNATED POINTS.
4. THE PRIVATE ENGINEER SHALL FURNISH THE COUNTY ENGINEER WITH GRADE SHEETS AND STATIONING FOR ALL HOUSE LATERALS AND "T" OR "Y" BRANCHES AND SHALL PROVIDE STAKES FOR THEM AT THEIR PROPER LOCATIONS WITH STATIONING PLAINLY MARKED. ALL HOUSE LATERALS SHALL BE CONSTRUCTED IN A STRAIGHT ALIGNMENT AT RIGHT ANGLES FROM THE MAIN LINE SEWER EXCEPT AS SHOWN ON THE PLANS. HOUSE LATERALS FROM GARAGES SHALL NOT HAVE AN ANGLE OF DEPARTURE LESS THAN 45° WITH THE MAIN LINE SEWER. ANY CHANGE IN ALIGNMENT SHALL BE INDICATED BY THE PRIVATE ENGINEER.
5. THE PRIVATE ENGINEER SHALL FURNISH THE HOUSE LATERAL DEPTH AT THE PROPERTY LINE BELOW THE TOP OF CURB ELEVATION FOR EACH HOUSE LATERAL ON THE GRADE SHEET.
6. BEFORE WORK CAN BE STARTED, THE CONTRACTOR MUST OBTAIN A PERMIT TO EXCAVATE IN COUNTY STREETS FROM THE L.A. COUNTY ROAD DEPT., DISTRICT OFFICE NO. 1, AND PAY A FEE TO THE COUNTY ENGINEER, EDI #, 8001 TA AVE., SAN DIMAS REGIONAL OFFICE, TO COVER THE COST OF CONSTRUCTION INSPECTION AND RECORD PLANS.
7. IF WORK IS TO BE DONE IN A STATE HIGHWAY, A PERMIT MUST BE OBTAINED FROM THE STATE OF CALIFORNIA, DIVISION OF HIGHWAYS, 130 SOUTH SPRING STREET, LOS ANGELES, CALIFORNIA.
8. APPROVAL OF THIS PLAN BY THE COUNTY OF LOS ANGELES DOES NOT CONSTITUTE A REPRESENTATION AS TO THE ACCURACY OF THE LOCATION OR THE EXISTENCE OR NON-EXISTENCE OF ANY UNDESIGNATED UTILITY PIPE, OR STRUCTURE WITHIN THE LIMITS OF THIS PROJECT. THIS NOTE APPLIES TO ALL PAGES.
9. REFER TO SECTION 7-16.4.1 OF THE STANDARD SPECIFICATIONS, REGARDING SAFETY DEVICES.
10. PRIOR TO THE ISSUANCE OF THE REQUIRED SEWER CONSTRUCTION PERMIT BY THE COUNTY ENGINEER, THE CONTRACTOR SHALL OBTAIN A PERMIT TO EXCAVATE FROM THE STATE OF CALIFORNIA, DEPARTMENT OF INDUSTRIAL RELATIONS DIVISION OF INDUSTRIAL SAFETY, AND SHALL OBTAIN A CERTIFICATE OF WORKERS' COMPENSATION INSURANCE WITH THE COUNTY ENGINEER.

CONSTRUCTION NOTES:

1. WORK SHALL BE CONSTRUCTED ACCORDING TO THE STANDARD SPECIFICATIONS FOR PUBLIC WORKS CONSTRUCTION (1979 EDITION) AND COUNTY ENGINEER SPECIAL PROVISIONS FOR THE CONSTRUCTION OF SANITARY SEWERS DATED SEPTEMBER 1976.
2. THE CONTRACTOR SHALL NOTIFY THE ENVIRONMENTAL DEVELOPMENT DIVISION BY MAIL (917) 870-1254 AT LEAST TWENTY-FOUR HOURS BEFORE STARTING ANY WORK UNDER THIS CONTRACT.
3. HOUSE LATERALS TO BE CONSTRUCTED WITH INVERTS AT PROPERTY LINE 4 FEET BELOW CURB GRADE EXCEPT AS NOTED.
4. WYE OR TEE BRANCHES MAY BE USED FOR CONNECTIONS TO MAINLINE SEWERS EXCEPT AS NOTED.
5. ALL STRUCTURES SHALL BE EITHER BRICK MANHOLES PER 5-3 OR PRECAST CONCRETE MANHOLES PER 5-36, EXCEPT AS NOTED.
6. PROVIDE STAKES ON THE PROPERTY LINE OR PROPERTY LINES PRODUCED AT RIGHT ANGLES TO THE SEWER LINE AT THE CENTER LINE OF EACH MANHOLE.
7. MANHOLE TOPS IN UNIMPROVED RIGHTS OF WAY TO BE SIX INCHES ABOVE FINISHED GRADE.
8. VITRIFIED CLAY PIPE JOINTS SHALL BE TYPE "D", "P", OR "Q" PER STANDARD SPECIFICATIONS SECTION 208-2.
9. IF A POWER POLE IS WITHIN THREE FEET OF THE SEWER, THE SEWER SHALL BE ENCASED, PER 5-23, CASE II, TWO FEET ON EACH SIDE FROM THE POINT OF INTERFERENCE.
10. IF DURING THE COURSE OF CONSTRUCTION IT IS DETERMINED THAT THERE IS LESS THAN FOUR FEET OF COVER OVER THE TOP OF A MAIN LINE OR HOUSE LATERAL V.C.P. SEWER WHICH IS NOT INDICATED ON THE PLANS, THE PIPE SHALL BE ENCASED PER 5-23, CASE II UNLESS OTHERWISE APPROVED BY THE COUNTY ENGINEER.
11. ALL JOINS BETWEEN CAST IRON PIPE AND VITRIFIED CLAY PIPE SHALL BE MADE WITH A RUBBER SLEEVE JOINT, TYPE "C" OR "D", (WITH BUSHING IF NECESSARY) PER STANDARD SPECIFICATIONS, SECTION 208-2.
12. SEWERS TO BE TESTED FOR LEAKAGE PER SECTION 208-1.8 OF THE STANDARD SPECIFICATIONS AND SPECIAL PROVISIONS.
13. PROVIDE ALL TRENCHES WITHIN PAVED AREAS TO MEET L.A. COUNTY ROAD DEPT. OR CALIFORNIA STATE HIGHWAY REQUIREMENTS IN ACCORDANCE WITH PERMITS.
14. FULL COMPLIANCE WITH SECTION 206-1.8 OF THE SPECIAL PROVISIONS WILL BE REQUIRED FOR BACKFILL IN STREETS. CERTIFICATION OF BACKFILL COMPACTION AND SAND EQUIVALENTS BY A QUALIFIED, REGISTERED TESTING LABORATORY SHALL BE PROVIDED BY THE PERMITTEE PRIOR TO THE RESUMPTION OF A CERTIFICATE OF PARTIAL ACCEPTANCE.
15. SPECIAL BACKFILL IN DESIGNATED AREAS:
 (A) BACKFILL TRENCH & REPLACE OTHER BATHS REMOVED SO AS TO ACHIEVE THE NATURAL OR FINISHED GRADES & SLOPES SHOWN ON THE GRADING PLAN APPROVED FOR THIS TRACT MAP BY THE BUILDING & SAFETY DIVISION.
 (B) ALL BACKFILL & SANDY MATERIAL SHALL BE COMPACTED TO A MIN. OF 90% OF MAX. DENSITY PER ASTM 318 METHOD OF TESTING D-698-57T AS MODIFIED.

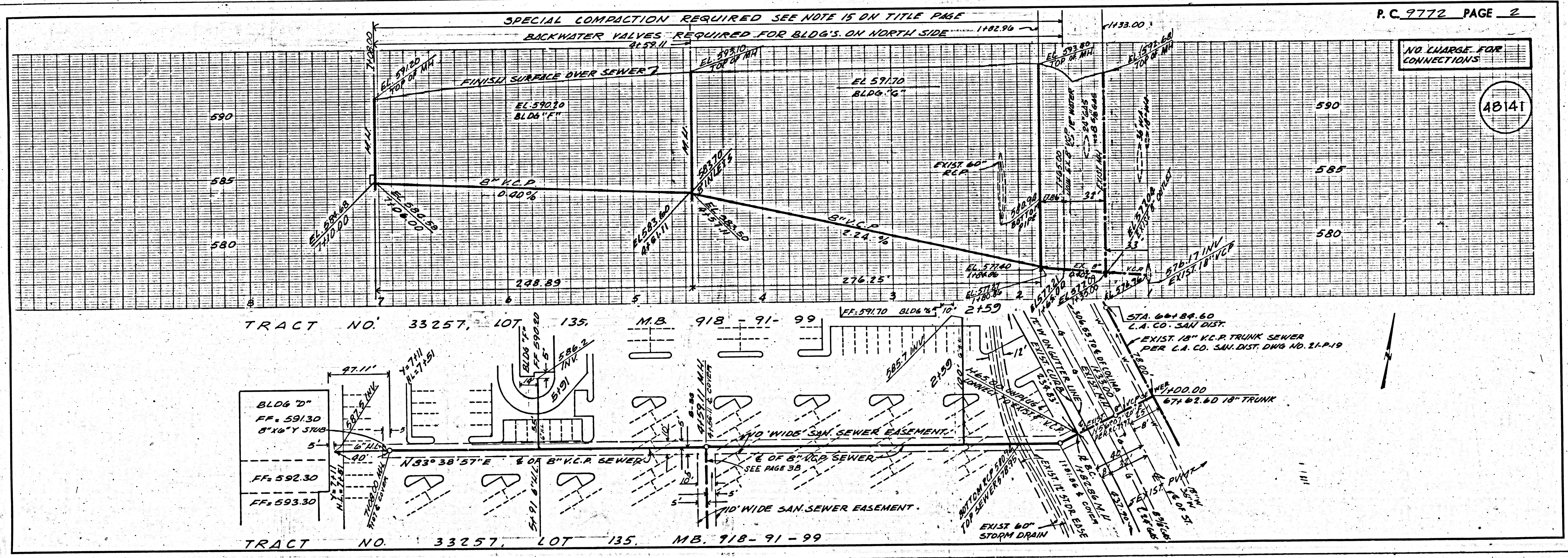
THE FOLLOWING LATEST REVISED STANDARD PLANS ON FILE IN THE OFFICE OF THE COUNTY ENGINEER SHALL APPLY IN THE CONSTRUCTION OF THIS PROJECT:

| LEGEND | NO. |
|---|------|
| MINIMUM PUBLIC SAFETY REQUIREMENTS | 5-1 |
| BRICK MANHOLE | 5-3 |
| STANDARD MANHOLE STEP | 5-37 |
| ENCASING FOR SEWER PIPE | 5-31 |
| ENCASING AND ENCASUREMENT | 5-28 |
| WYE OR TEE SUPPORT | 5-26 |
| ALLOWABLE TRENCH WIDTHS | 5-20 |
| LOCKING MANHOLE PLUG AND COVER | 5-38 |
| NON-REINFORCED PRECAST CONCRETE MANHOLE | 5-36 |

COUNTY OF LOS ANGELES, CALIFORNIA
 STEPHEN J. ROSS, COUNTY ENGINEER WALTER E. GARRISON, CHIEF ENGINEER
 APPROVED *John H. Miller 4/10/80* APPROVED *Walter E. Garrison 4/10/80*
 SAN DIMAS REGIONAL ENGINEER (S) DISTRICT OFFICE ENGINEER
 CHECKED *Ralph David Stewart 4/10/80*
 REG. C.E. NO. 16883 (S) DISTRICT OFFICE ENGINEER
 LA PUENTE BLDG. DIST. 2.02

NO CONNECTION FOR THE DISPOSAL OF INDUSTRIAL WASTES SHALL BE MADE TO SEWERS SHOWN ON THESE DRAWINGS UNLESS A PERMIT FOR INDUSTRIAL WASTE WATER DISCHARGE HAS BEEN ISSUED BY THE SANITATION DISTRICTS FOR SAID CONNECTION.
 BEFORE BREAKING INTO OR CONSTRUCTION ON A COUNTY SANITATION DISTRICT SEWER AND PRIOR TO FINAL ACCEPTANCE OF THE PROJECT SANITATION DISTRICT INSPECTOR SHALL BE NOTIFIED BY PHONE 362-8945, SO THAT REQUIRED INSPECTION CAN BE MADE.

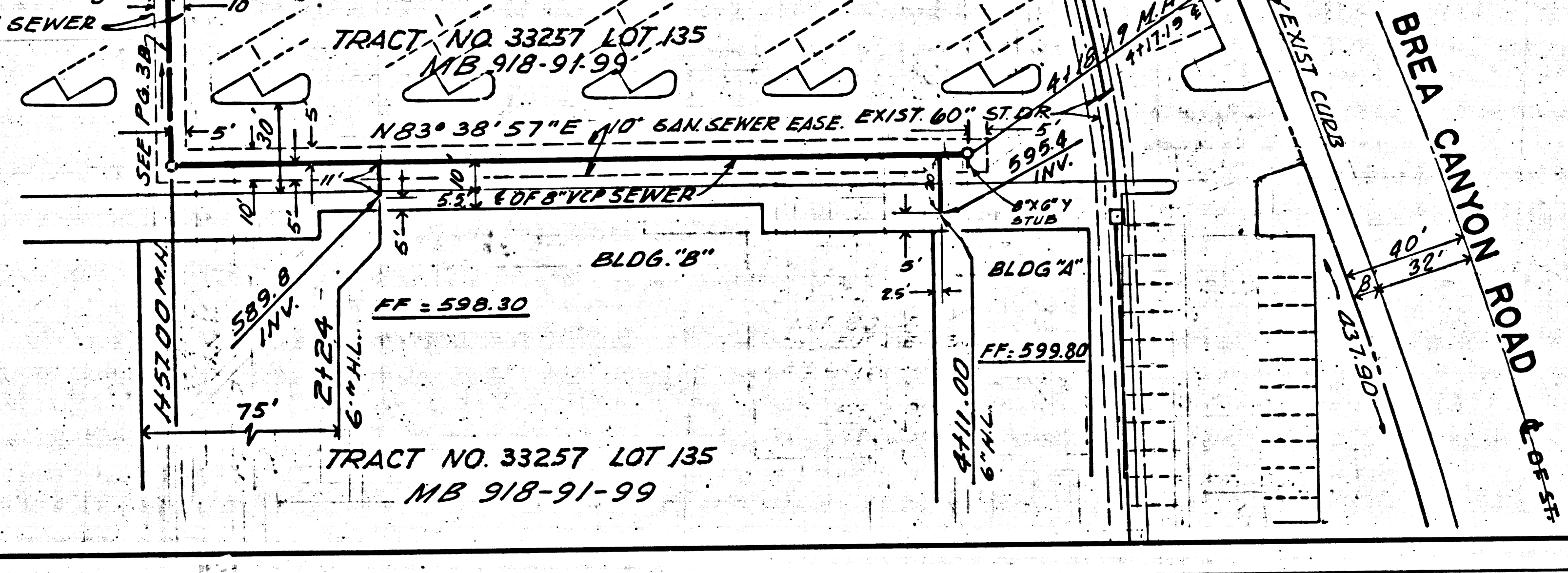
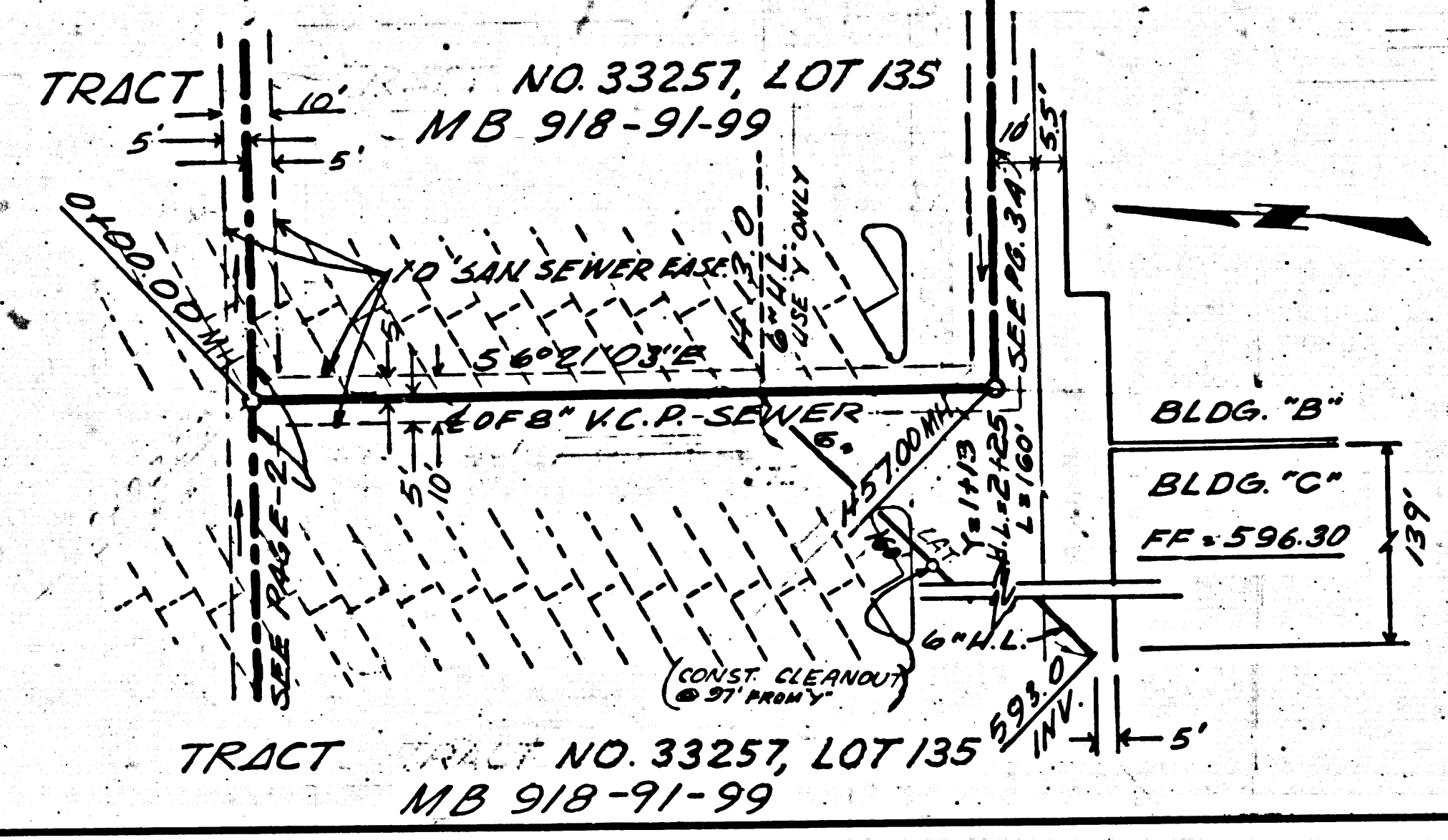
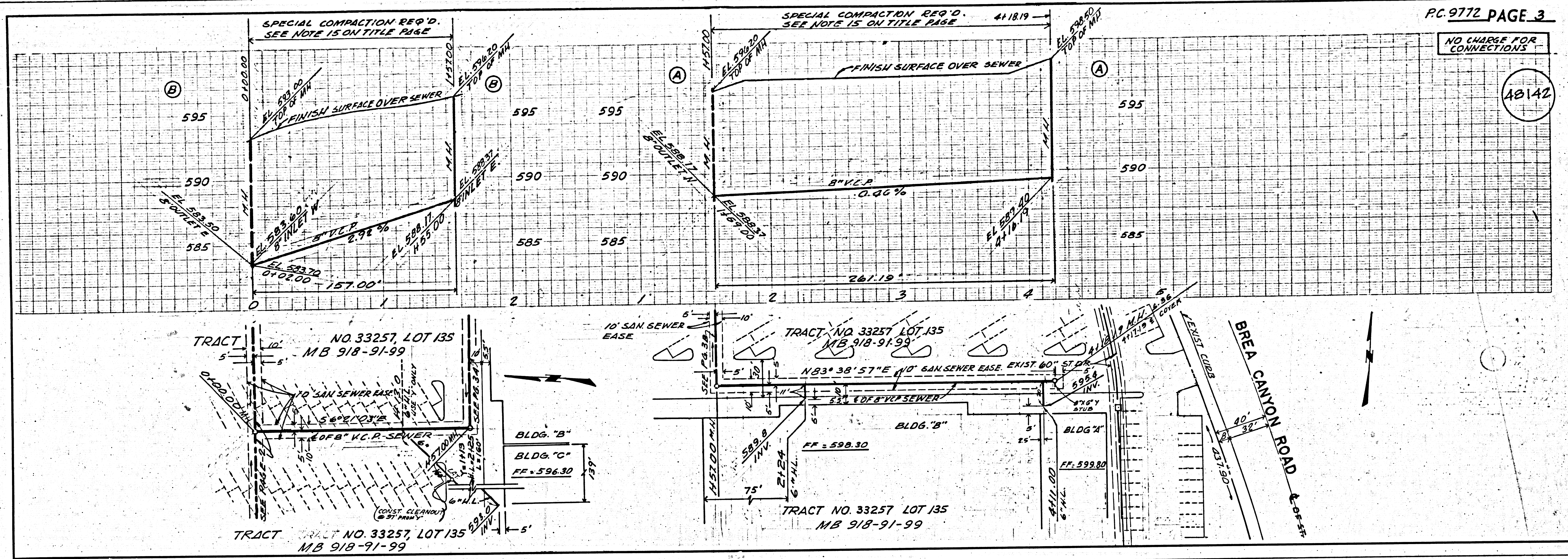
ISSUE NO PERMITS UNTIL
 P.C. 9597 IS ACCEPTED



DIAMOND CREEK VILLAGE CENTER
 PRIVATE CONTRACT NO. 9772

NO CHARGE FOR CONNECTIONS

18142



BTP-34
DINWOOD CREEK AIRPORT DEVELOP