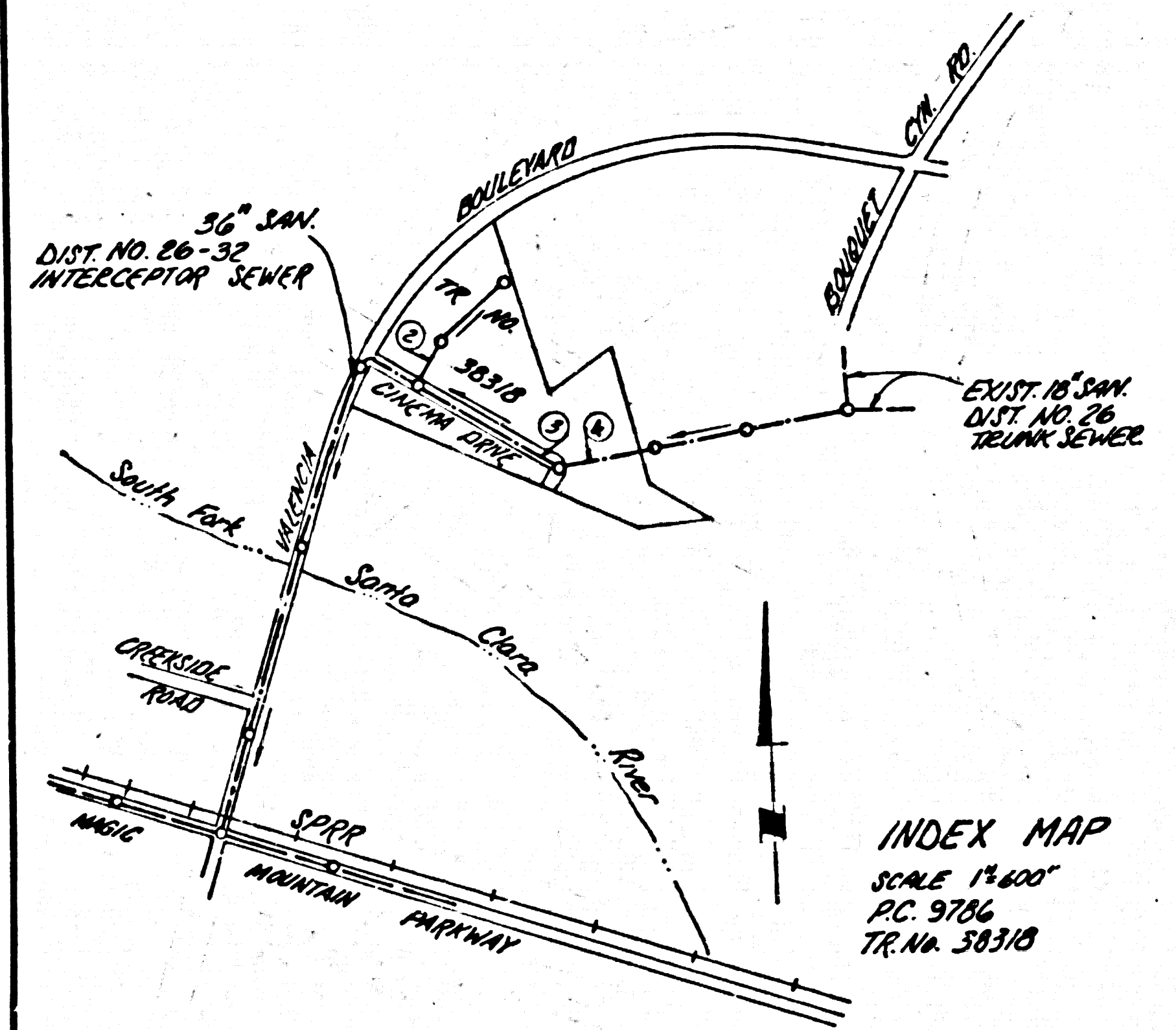


B.M. CL 2895 ELEV. 1130.370
 208M Top W. CB Valencia Blvd 6'S.E.C.E.
 @ 34' Car Magic Mountain Parkway
 and Valencia Blvd. 97' E. S. 1' 40" N. 94' 1/2" W.
 NEWHALL QUAD. 19 78



Revision No. 1 Date: 9-15-80
 Encased house laterals and deleted
 house lateral at station 27+30.
 APPROVED *Ralph D. Smith* 9/15/80
 Office of the County Engineer (Date)

BEFORE BREAKING INTO OR CONSTRUCTION ON A COUNTY
 SANITATION DISTRICT SEWER AND PRIOR TO FINAL ACCEPTANCE
 OF THE PROJECT SANITATION DISTRICT INSPECTOR SHALL BE
 NOTIFIED BY PHONE 962-8405 SO THAT INSPECTION
 CAN BE MADE.
 NO CONNECTION FOR THE DISPOSAL OF INDUSTRIAL WASTES
 SHALL BE MADE TO SEWERS SHOWN ON THESE DRAWINGS UNLESS
 A PERMIT FOR INDUSTRIAL WASTE WATER DISCHARGE HAS BEEN
 ISSUED BY THE SANITATION DISTRICTS FOR SAID CONNECTION

- GENERAL NOTES:**
- ELEVATIONS ARE IN FEET ABOVE U.S.C. & G.S. MEAN LEVEL DATUM OF 1929.
 - NO REVISIONS SHALL BE MADE IN THESE PLANS WITHOUT THE APPROVAL OF THE COUNTY ENGINEER.
 - NO REPRESENTATIVE OF THE COUNTY ENGINEER WILL SURVEY OR LAY OUT ANY PORTION OF THE WORK.
 - GRADES TO WHICH THIS IMPROVEMENT IS TO BE CONSTRUCTED ARE SHOWN ON PLANS AND PROFILES GRADE POINTS FOR TOP OF CURBS, CENTER LINE OF STREETS, OR CENTER LINE OF ALLEYS ARE SHOWN BY CIRCLES OR SQUARES. ALL POINTS BETWEEN DESIGNATED POINTS THE GRADE SHALL BE ESTABLISHED TO AS TO CONFORM TO A STRAIGHT LINE DRAWN BETWEEN SAID DESIGNATED POINTS.
 - THE PRIVATE ENGINEER SHALL FURNISH THE COUNTY ENGINEER WITH GRADE SHEETS AND STATIONINGS FOR ALL HOUSE LATERALS AND 10" OR 12" BRANCHES AND SHALL PROVIDE STAKE FOR THEM AT THEIR PROPER LOCATIONS WITH STATIONING PLAINLY MARKED. ALL HOUSE LATERALS SHALL BE CONSTRUCTED AT RIGHT ANGLES FROM THE MAIN LINE SEWER EXCEPT AS SHOWN ON THE PLANS. HOUSE LATERALS FROM CHIMNEYS SHALL NOT HAVE AN ANGLE OF LESS THAN 45° WITH THE MAIN LINE SEWER. ANY CHANGE IN ALIGNMENT SHALL BE REQUESTED BY WRITING BY THE PRIVATE ENGINEER.
 - THE PRIVATE ENGINEER SHALL FURNISH THE HOUSE LATERAL DEPTH AT THE PROPERTY LINE BELOW THE TOP OF CURB ELEVATION FOR EACH HOUSE LATERAL ON THE GRAD SHEET.
 - BEFORE WORK CAN BE STARTED, THE CONTRACTOR MUST OBTAIN A PERMIT TO EXCAVATE IN COUNTY STREETS FROM THE L.A. COUNTY ROAD DEPT., DISTRICT OFFICE NO. 5, AND PAY A FEE TO THE COUNTY ENGINEER. PERMITS MUST BE OBTAINED FROM THE STATE OF CALIFORNIA, DIVISION OF HIGHWAYS, 120 SOUTH SPRING STREET, LOS ANGELES, CALIFORNIA.
 - APPROVAL OF THIS PLAN BY THE COUNTY OF LOS ANGELES DOES NOT CONSTITUTE A REPRESENTATION AS TO THE ACCURACY OF THE LOCATION OF OR THE EXISTENCE OR NON-EXISTENCE OF ANY UNDERGROUND UTILITY PIPE, OR STRUCTURE WITHIN THE LIMITS OF THIS PROJECT. THIS NOTE APPLIES TO ALL PAGES.
 - REFER TO SECTION 7-18.4.3 OF THE STANDARD SPECIFICATIONS, REGARDING SAFTY ORDERS.
 - BEFORE THE ISSUANCE OF A BACCELLET CONSTRUCTION PERMIT, THE CONTRACTOR SHALL OBTAIN AND FEE WITH THE COUNTY ENGINEER, CONDUCT A PERMIT TO EXCAVATE IN COUNTY STREETS FROM THE LOS ANGELES COUNTY ROAD DEPARTMENT, A PERMIT FOR EXCAVATION AND TRENCHING, FROM THE STATE OF CALIFORNIA, DIVISION OF INDUSTRIAL SAFETY AND A CERTIFICATE OF NECESSARY CONSTRUCTION MEASUREMENTS WITH THE DEPARTMENT COUNTY ENGINEER, FOR EXCAVATION AND TRENCHING, COUNTY ROAD DEPT. 1200, 1200 SOUTH SPRING ST., LOS ANGELES, CALIFORNIA. THESE PERMITS SHALL BE OBTAINED PRIOR TO CANCELLATION OF PERMIT.

- CONSTRUCTION NOTES:**
- WORK SHALL BE CONSTRUCTED ACCORDING TO THE STANDARD SPECIFICATIONS FOR PUBLIC WORKS CONSTRUCTION 1979 EDITION WITH SUPPLEMENTS AND COUNTY ENGINEER SPECIAL PROVISIONS FOR THE CONSTRUCTION OF SANITARY SEWERS DATED 1-27-80 AND SHALL BE PROSECUTED ONLY IN THE PRESENCE OF THE COUNTY ENGINEER.
 - THE CONTRACTOR SHALL NOTIFY THE ENVIRONMENTAL DEPARTMENT THROUGH BY TELEPHONE, 700-8700, AT LEAST TWENTY-FOUR HOURS BEFORE STARTING ANY WORK UNDER THE CONTRACT.
 - HOUSE LATERALS TO BE CONSTRUCTED WITH INVERTS AT PROPERTY LINE 4 FEET BELOW CURB GRADE EXCEPT AS NOTED.
 - WYE OR TEE BRANCHES MAY BE USED FOR CONNECTIONS TO MAINLINE SEWERS EXCEPT AS NOTED.
 - ALL STRUCTURES SHALL BE EITHER BRICK MANHOLE PER 8-3 OR PRECAST CONCRETE MANHOLES PER 8-3.4, EXCEPT AS NOTED.
 - PROVIDE STAKES ON THE PROPERTY LINE OR PROPERTY LINES PRODUCED AT RIGHT ANGLES TO THE SEWER LINE AT THE CENTER LINE OF EACH MANHOLE.
 - MANHOLE TOPS IN UNIMPROVED RIGHTS OF WAY TO BE SIX INCHES ABOVE FINISHED GRADE.
 - VITRIFIED CLAY PIPE JOINTS SHALL BE TYPE "B", "C", OR "D" PER STANDARD SPECIFICATIONS SECTION 300-2.
 - IF A POWER POLE IS WITHIN THREE FEET OF THE SEWER, THE SEWER SHALL BE ENCASED PER 8-3.2, CASE II, TWO FEET ON EACH SIDE FROM THE POINT OF INTERFERENCE.
 - DURING THE COURSE OF CONSTRUCTION IT IS DETERMINED THAT THERE IS LESS THAN FOUR FEET OF COVER OVER THE TOP OF A MAIN LINE OR HOUSE LATERAL V.C.P. SEWER WHICH IS NOT INDICATED ON THE PLANS, THE PIPE SHALL BE ENCASED PER 8-3.2, CASE II UNLESS OTHERWISE APPROVED BY THE COUNTY ENGINEER.
 - ALL JOINTS BETWEEN CAST IRON PIPE AND VITRIFIED CLAY PIPE SHALL BE MADE WITH A RUBBER SLEEVE JOINT, TYPE "C" OR "D", WITH BUSHING IF NECESSARY PER STANDARD SPECIFICATIONS, SECTION 300-2.
 - SEWERS TO BE TRENCH FOR BACCELLET PER SECTION 300-1.6 OF THE STANDARD SPECIFICATIONS AND SPECIAL PROVISIONS.
 - REINFORCE ALL TRENCHES WITHIN PAVED AREAS TO MEET L.A. COUNTY ROAD DEPT. OR CALIFORNIA STATE HIGHWAY REQUIREMENTS IN ACCORDANCE WITH PERMITS.
 - FULL COMPLIANCE WITH SECTION 300-1.6 OF THE SPECIAL PROVISIONS WILL BE REQUIRED FOR BACCELLET IN STREETS. CERTIFICATION OF BACCELLET CONSTRUCTION AND BACCELLET COMPLIANCE BY A QUALIFIED, REGISTERED TESTING LABORATORY SHALL BE PROVIDED BY THE PERMITTEE PRIOR TO THE ISSUANCE OF A CERTIFICATE OF PARTIAL ACCEPTANCE.
 - VERIFY BACKFILL IN EXCAVATION CONSTRUCTION (REINFORCE TRENCH AND PROTECT STREET CURBS) SO AS TO ACHIEVE THE INTENDING ANCHORAGE AND STRENGTH GIVEN IN THE GRADING PLAN APPROVED FOR THIS DEVELOPMENT BY THE BUILDING & SAFETY DIVISION. (B) ALL BACKFILL AND SOFTS APPROVED SHALL BE COMPACTED TO A MINIMUM OF 90% MINIMUM DENSITY PER ASTM STANDARD METHOD OF TEST D-1557-77 AS NOTED. ACCEPTABLE CERTIFICATION OF SUCH CONNECTION SHALL BE SUBMITTED TO THE COUNTY ENGINEER FOR REVIEW.

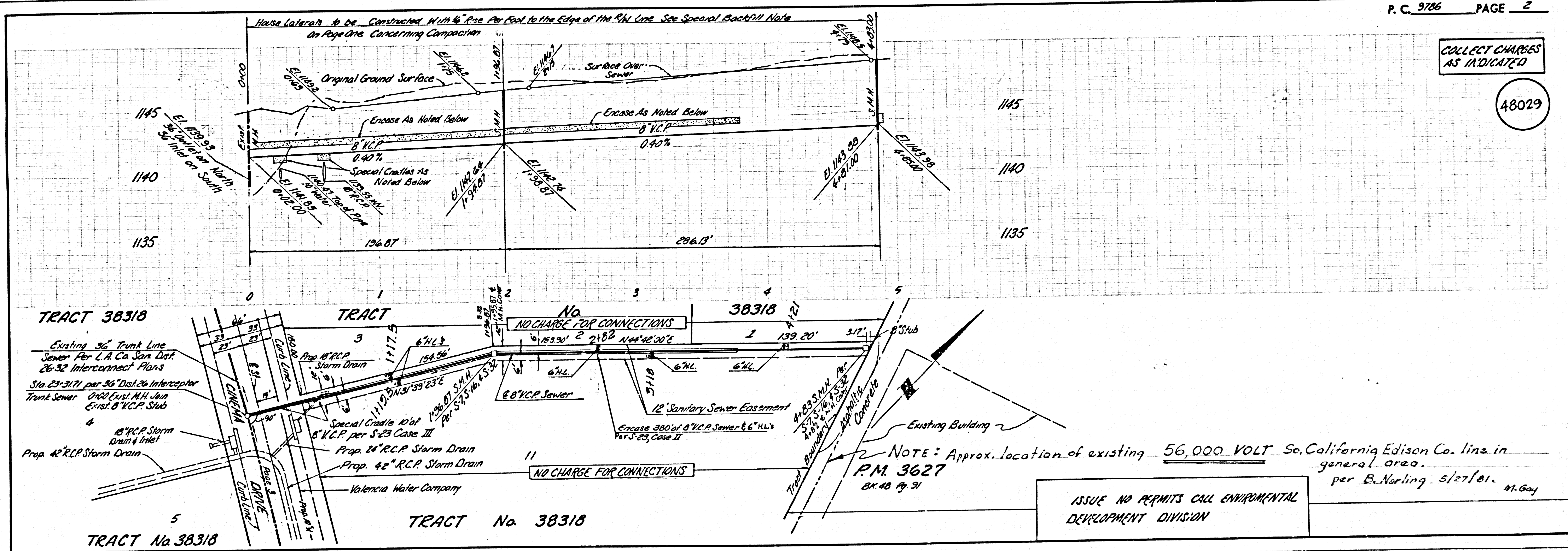
TRACT No. 38318
 PRIVATE CONTRACT NO. 9786

W.S. 62
 4 SHEETS, 4 PAGES
 SCALE: VERT. 1"=4'
 HORIZ. 1"=40'
 Dec. 4, 1979
 PREPARED IN THE OFFICES OF MALCOLM INC.
 1429 Thousand Oaks Blvd
 Thousand Oaks, Ca. 91360
 BY: *Donald W. Werts*
 REG. C. E. No. 47344

THE FOLLOWING LATEST REVISED STANDARD PLANS ON FILE IN THE OFFICE OF THE COUNTY ENGINEER SHALL APPLY IN THE CONSTRUCTION OF THIS PROJECT.

LEGEND	8-1
MINIMUM PUBLIC SAFETY REQUIREMENTS	8-2
BRICK MANHOLE	8-3
STANDARD MANHOLE SET	8-4
GRADING FOR SEWER PIPES	8-5
CRADLING AND BRACEMENT	8-6
WYE OR TEE SUPPORT	8-7
ALLOWABLE MINOR WRETHES	8-8
LOCKING MANHOLE FRAME AND COVER	8-9
NON-REINFORCED PRECAST CONCRETE MANHOLE	8-10
RECTANGULAR SMALL MANHOLE	8-11
RECTANGULAR MANHOLE FRAME AND COVER	8-12
PRECAST SMALL MANHOLE	8-13

COUNTY OF LOS ANGELES, CALIFORNIA
 STEPHEN J. KARNICE, COUNTY ENGINEER
 APPROVED *Michael H. Haggerty* 6/11/80
 CHECKED *Ralph D. Smith* 6/11/80
 REG. C.E. NO. 16883
 SANTA CLARITA VALLEY BLDG. DIST. 82



COLLECT CHARGES AS INDICATED

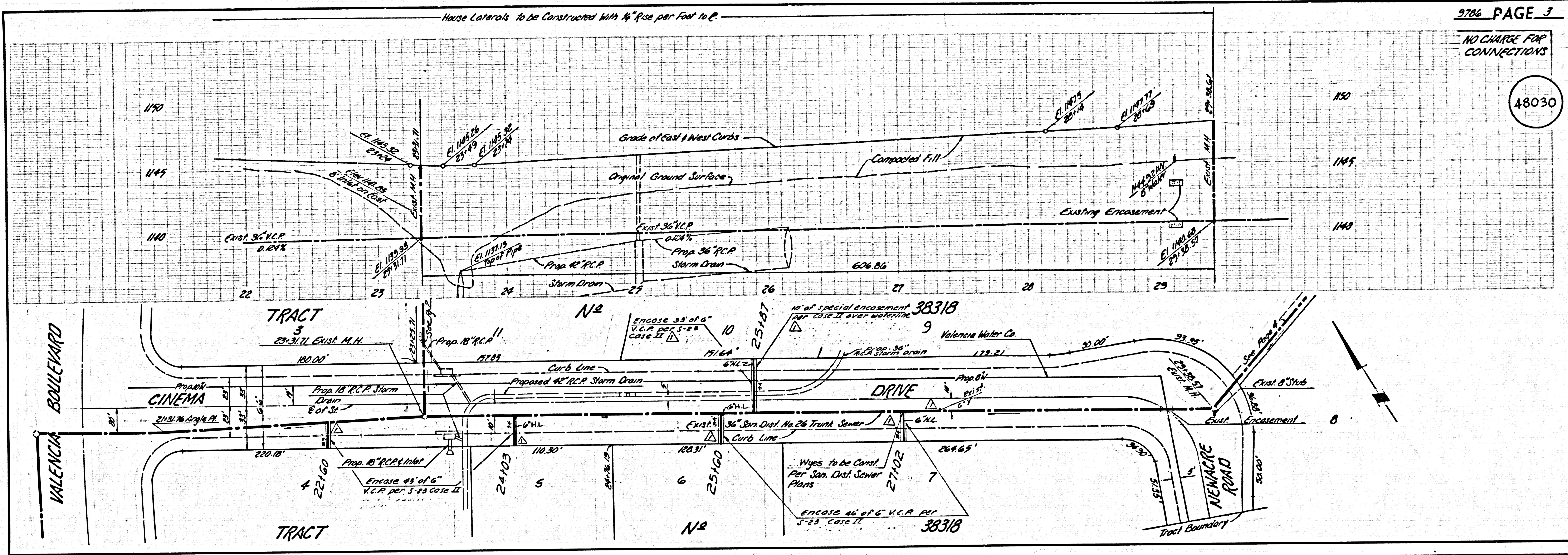
48029

NOTE: Approx. location of existing 56,000 VOLT So. California Edison Co. line in general area.
 per B. Norling 5/27/81. M. Gay

ISSUE NO PERMITS CALL ENVIRONMENTAL DEVELOPMENT DIVISION

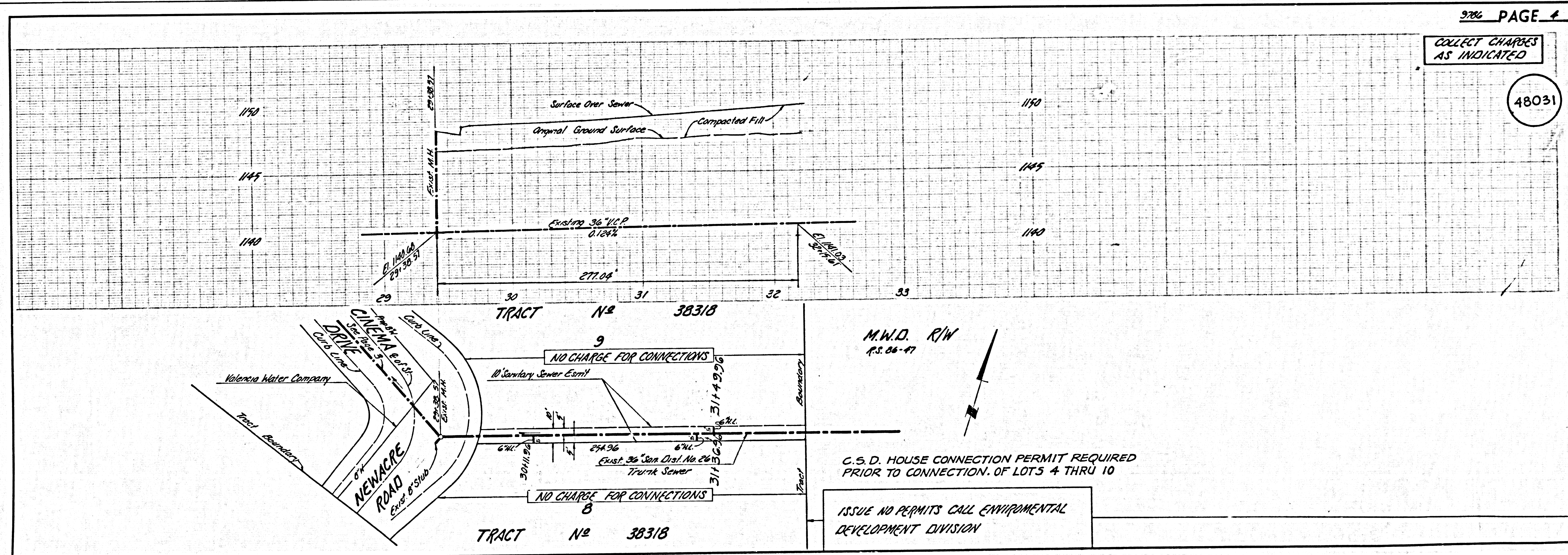
NO CHARGE FOR CONNECTIONS

48030



COLLECT CHARGES AS INDICATED

48031



M.W.D. R/W
A.S. 06-97

NO CHARGE FOR CONNECTIONS

NO CHARGE FOR CONNECTIONS

C.S.D. HOUSE CONNECTION PERMIT REQUIRED PRIOR TO CONNECTION OF LOTS 4 THRU 10

ISSUE NO PERMITS CALL ENVIRONMENTAL DEVELOPMENT DIVISION