

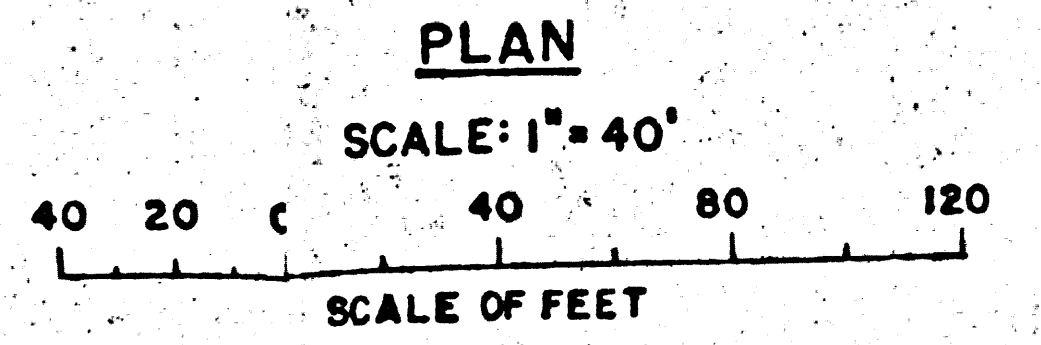
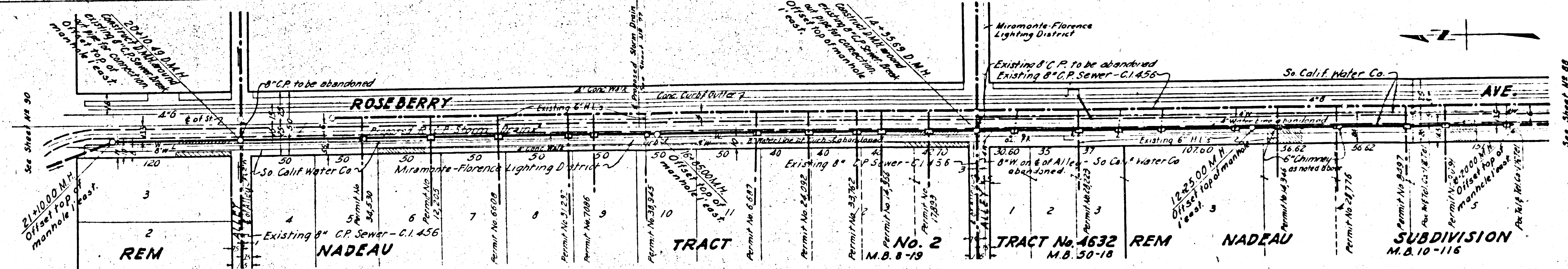
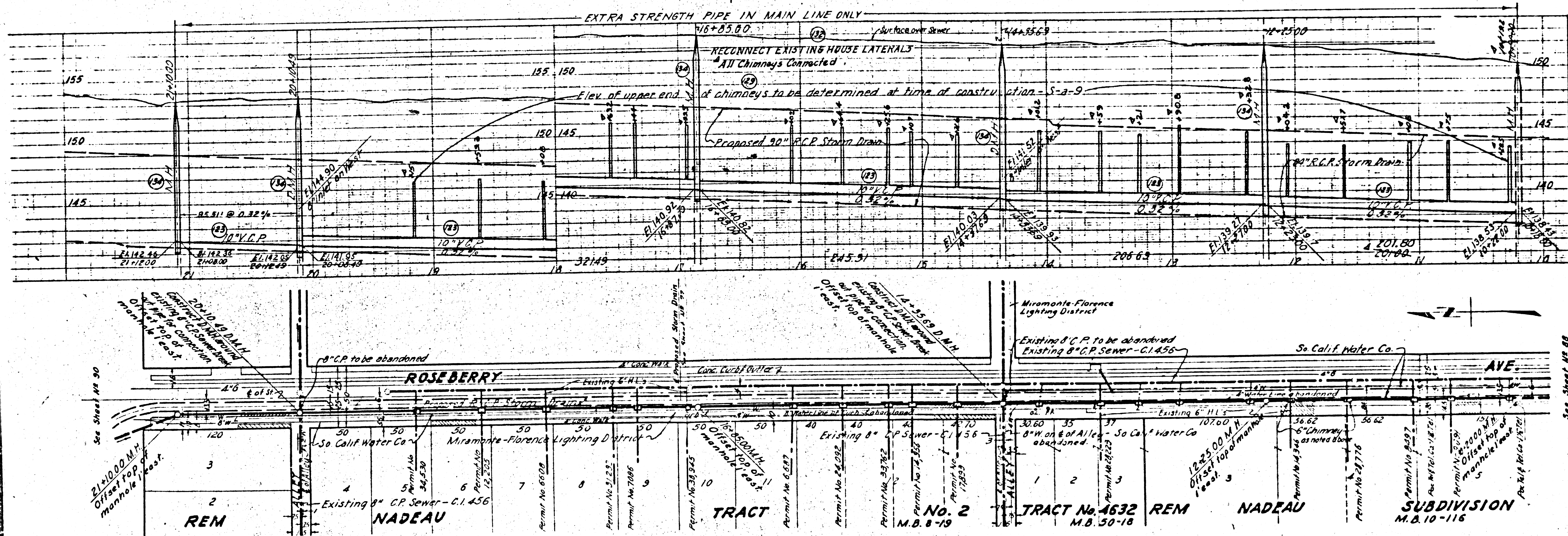
PROFILE

HORI. SCALE: 1" = 40'
VERT. SCALE: 1" = 4'

B.M. E.L. 196 El. 152.374 F.B. 1789 pg. 56
Roseberry Ave. 110' N of Alley 630' S of E. Florence Ave.
Bt. Spk. W. Co. front line @ 7401

B.M. E.L. 195 El. 151.062 F.B. 1789 pg. 57
Roseberry Ave. 1000' S of E. Florence Ave.
Bt. Spk. W. Co. front Litchfield Glass Co. Plant @ 7507

47391



REF. P.C. # 9788 COUNTY STORM DRAIN BOND ISSUE P.C. 1788

PREPARED BY WILLIAM J. FOX COUNTY ENGINEER & SURVEYOR RECOMMENDED BY <i>[Signature]</i> CHECKED BY <i>[Signature]</i> DATE 3/27/1953	REVISIONS MARK DATE DESCRIPTION Δ 11-15-56 Revised to "As Shown"		LOS ANGELES COUNTY FLOOD CONTROL DISTRICT PROJECT NO. 1 EAST COMPTON CREEK NO. 1 LINE C SANITARY SEWER RECONSTRUCTION STA. 10+20.00 TO STA. 21+10.00 PLAN AND PROFILE APPROVED BY <i>[Signature]</i> SCALE DATE NO. 181-1-01.89 AS SHOWN APR. 1954 SHEET 89 OF 93
	MADE BY <i>[Signature]</i> DRAWN BY <i>[Signature]</i> CHECKED BY <i>[Signature]</i> DATE 3/27/1953	DESIGNED BY <i>[Signature]</i> CHECKED BY <i>[Signature]</i> DATE 3/27/1953	