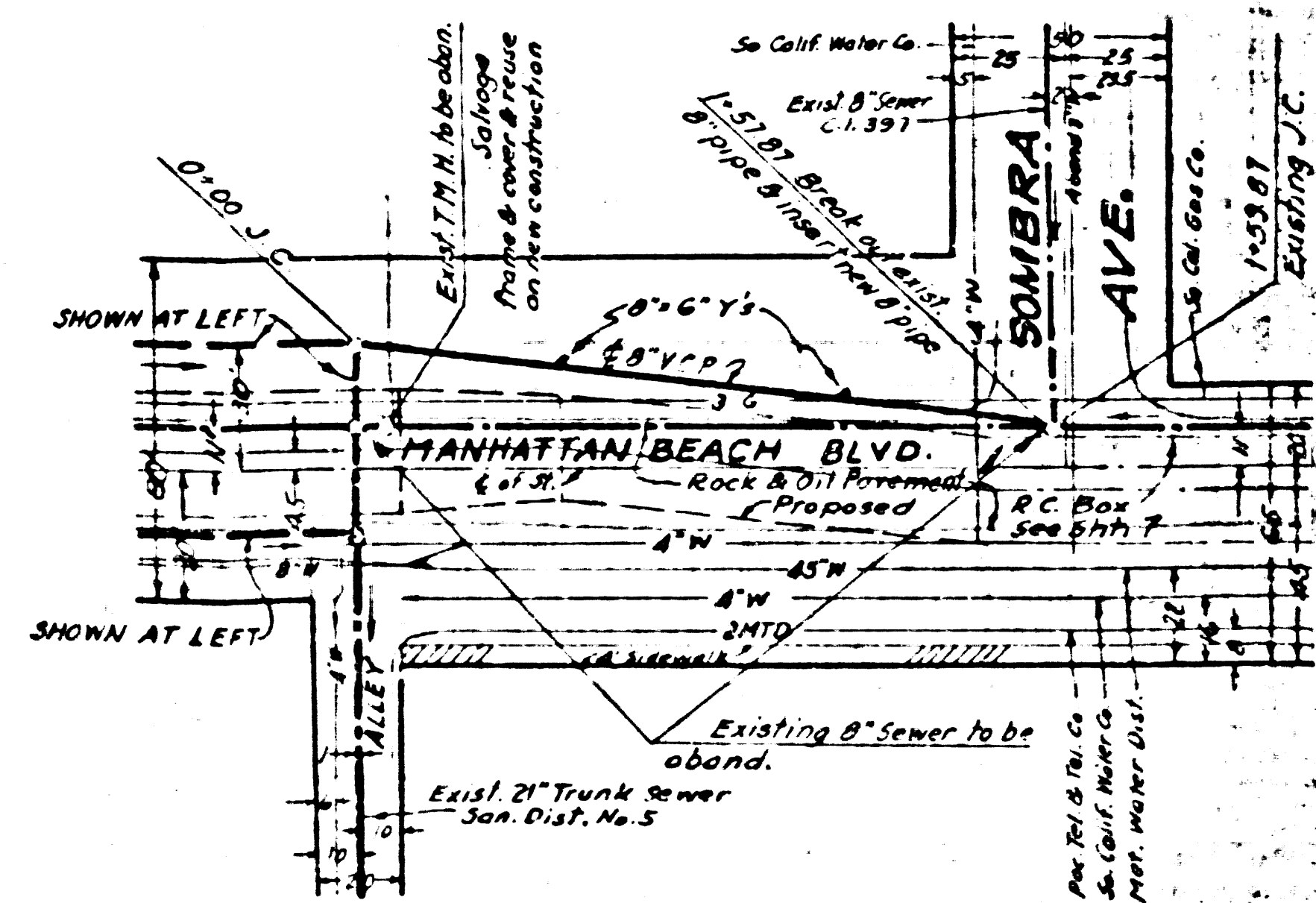
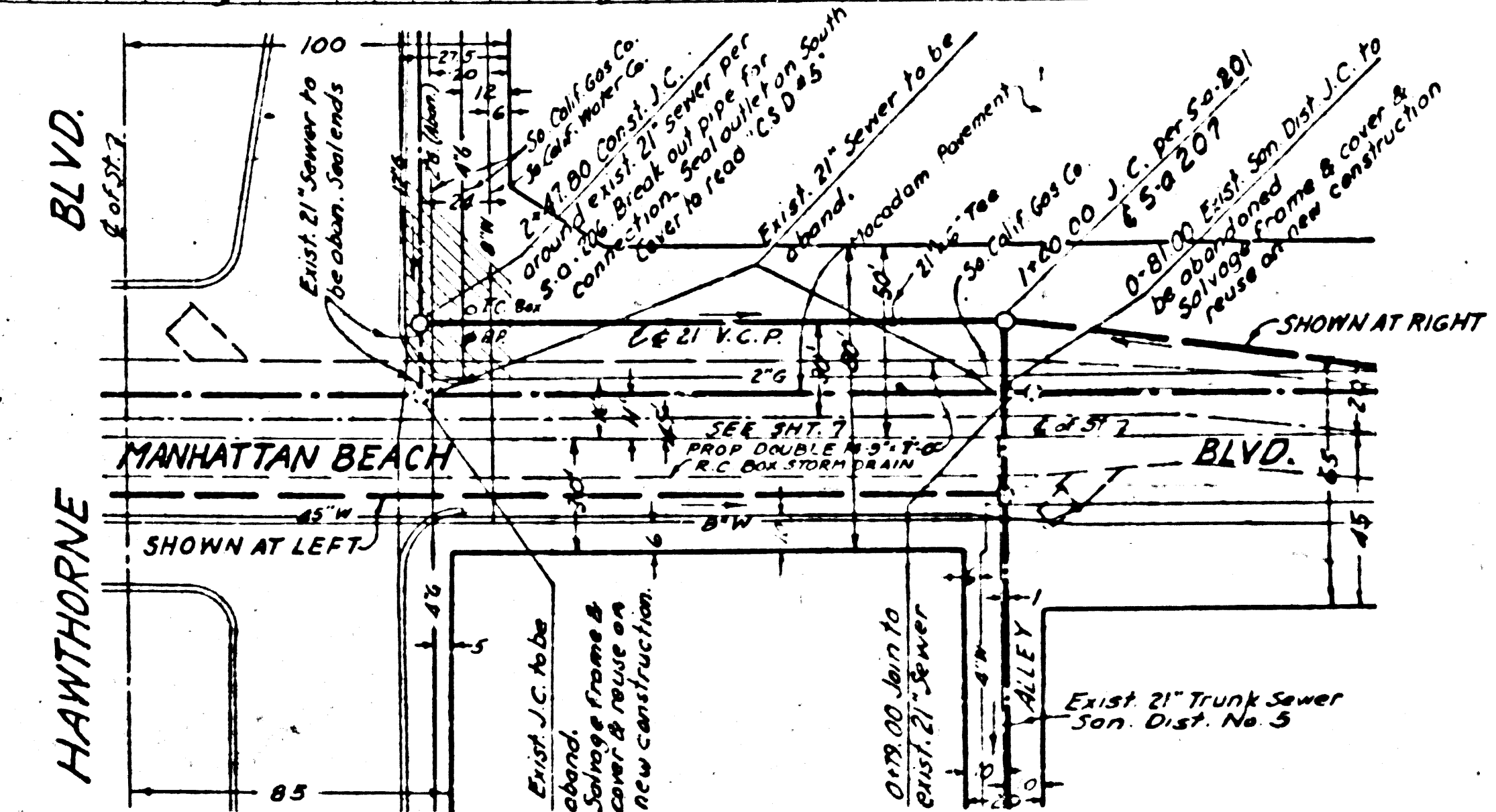
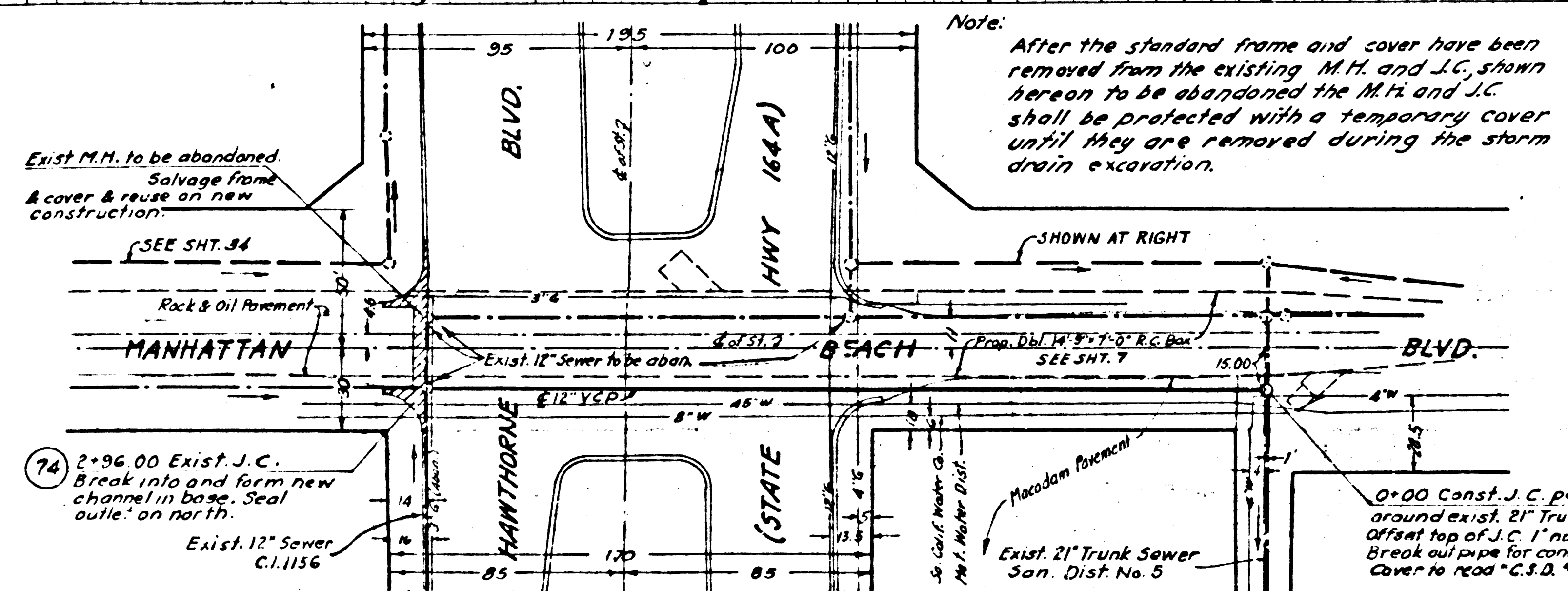
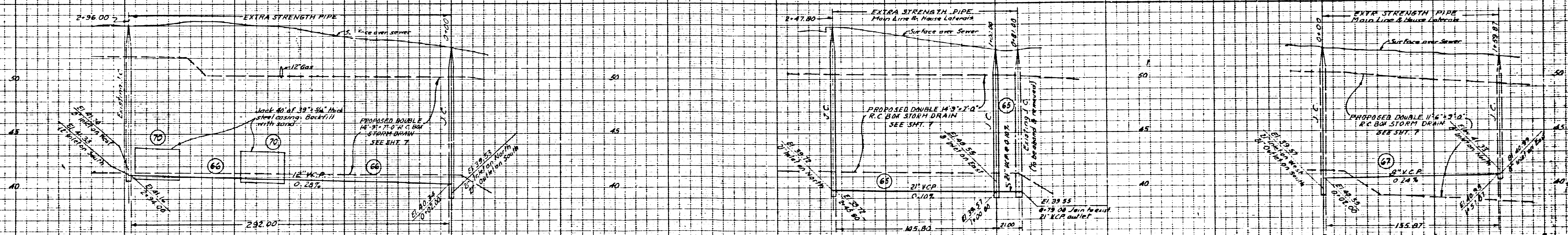


47993



Note: After the standard frame and cover have been removed from the existing M.H. and J.C. shown hereon to be abandoned the M.H. and J.C. shall be protected with a temporary cover until they are removed during the storm drain excavation.

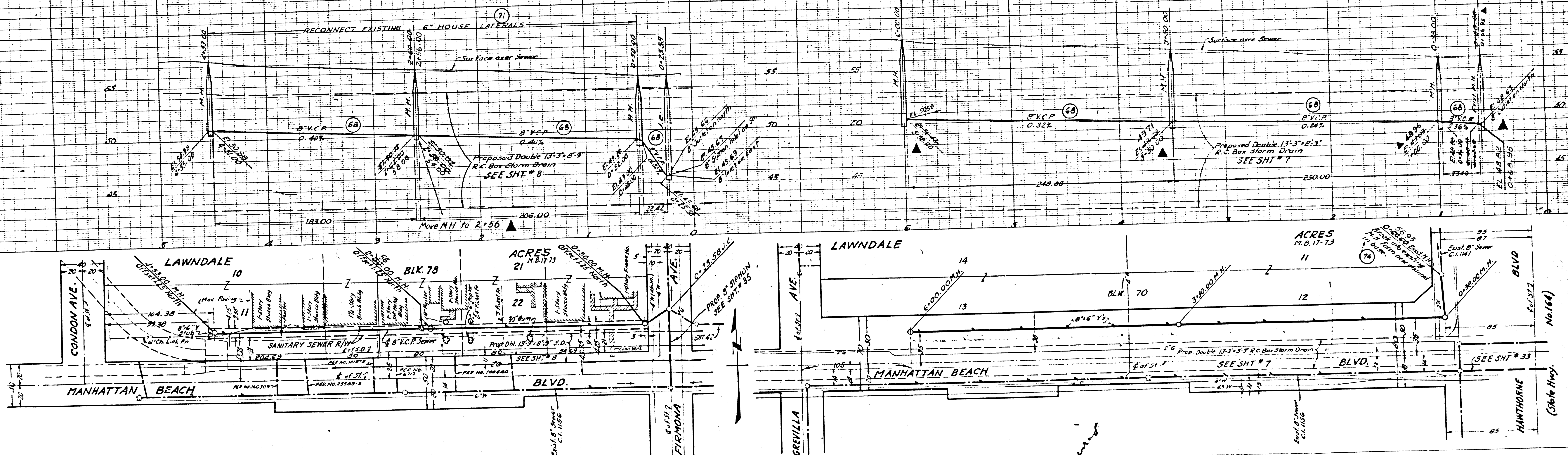
10' 00" Const. J.C. per S.A. 201 & 207 around exist. 21" Trunk Sewer. Offset top of J.C. 1' north. Break out pipe for connection Cover No. 100 "C.S.D. #3"

*Journal
no print required*

PREPARED BY JOHN A. LAMBIE COUNTY ENGINEER		COUNTY STORM DRAIN BOND ISSUE	
RECOMMENDED BY <i>[Signature]</i>		LOS ANGELES COUNTY FLOOD CONTROL DISTRICT PROJECT NO. 12 MANHATTAN BEACH BLVD LINE A SANITARY SEWER RECONSTRUCTION PLAN AND PROFILE	
CHECKED BY <i>[Signature]</i>	DATE 12/12/57	APPROVED BY <i>[Signature]</i>	DATE 12/12/57
DRAWN BY J.A. WOOD	CHECKED BY J.A. WOOD	SCALE 1" = 10'	SHEET NO. 33 OF 48

DETJGFM
2057.536
STAINLESS

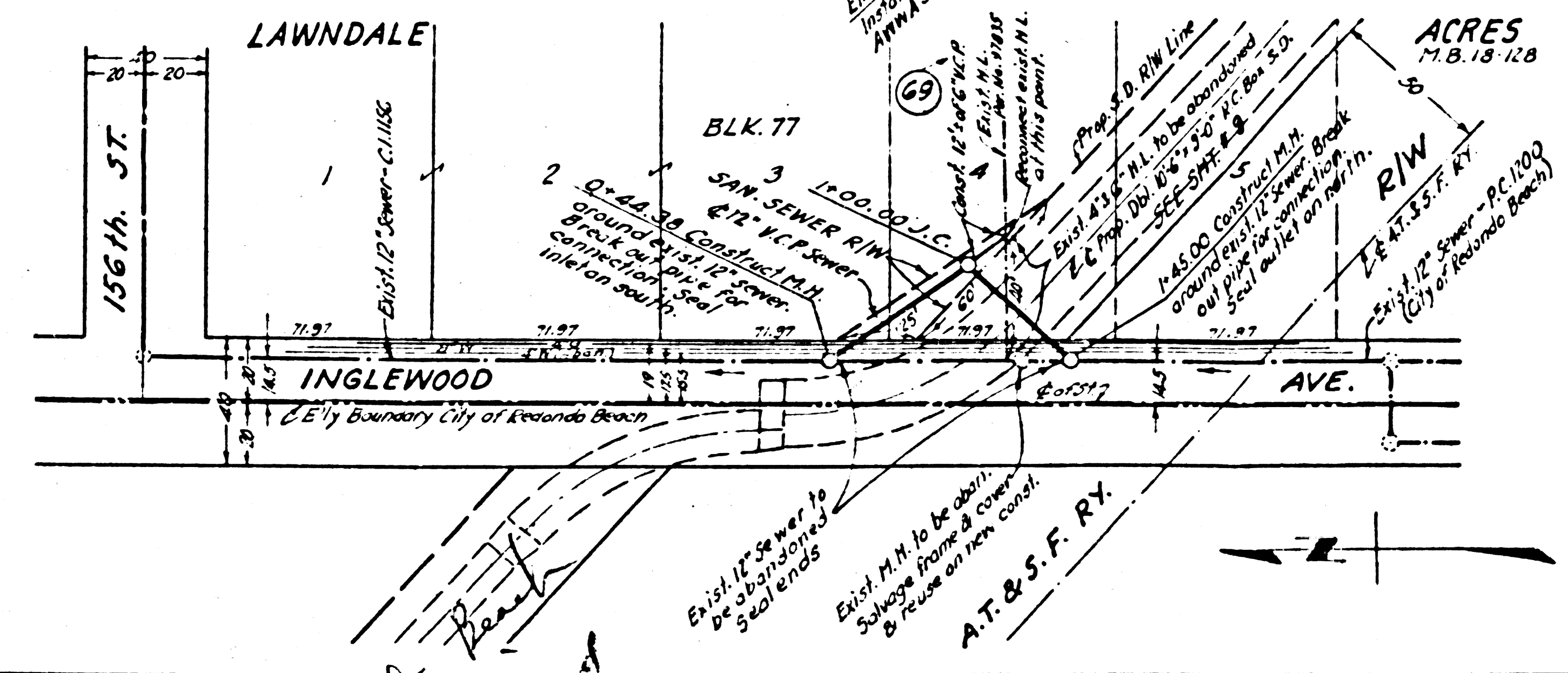
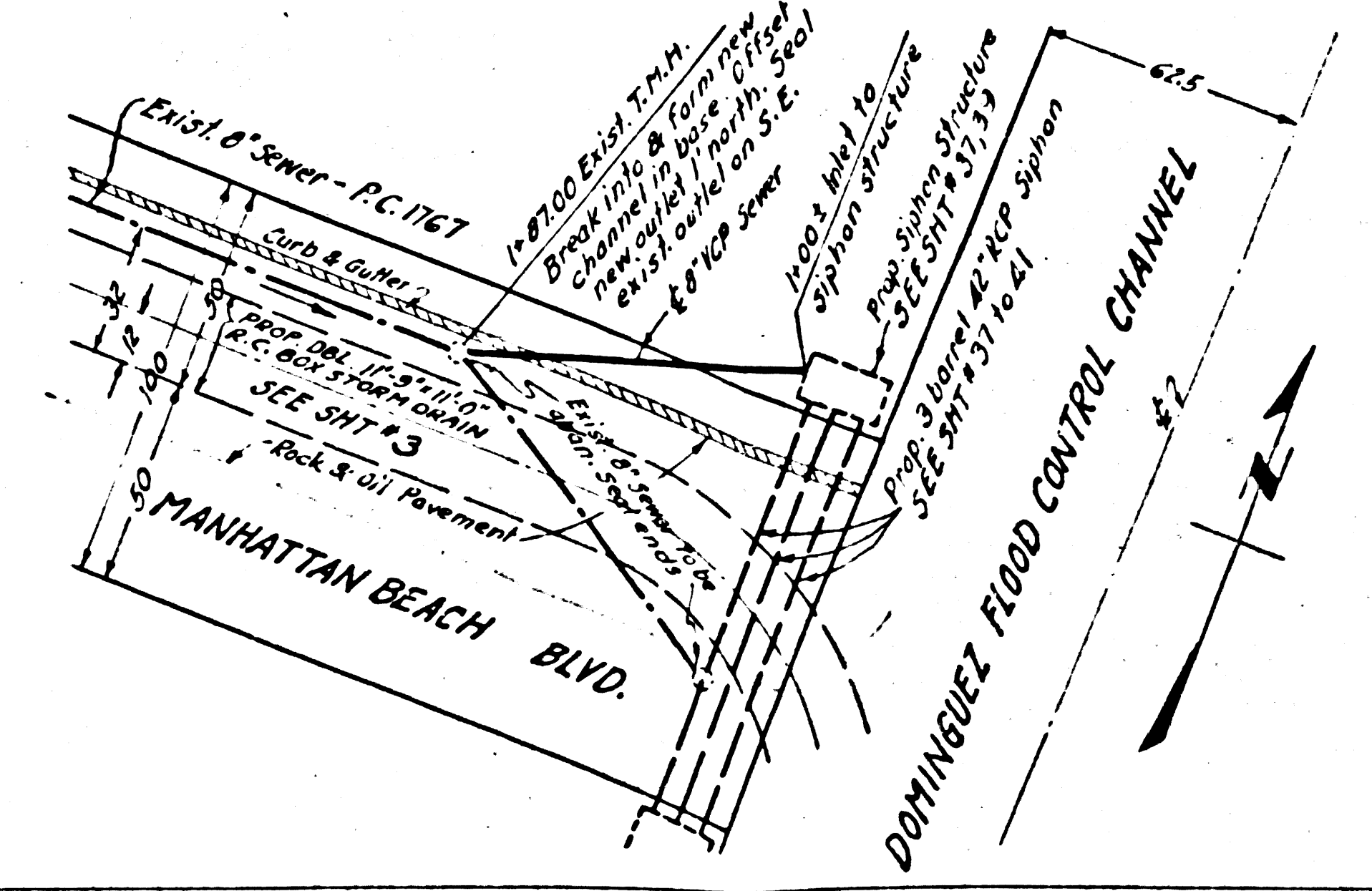
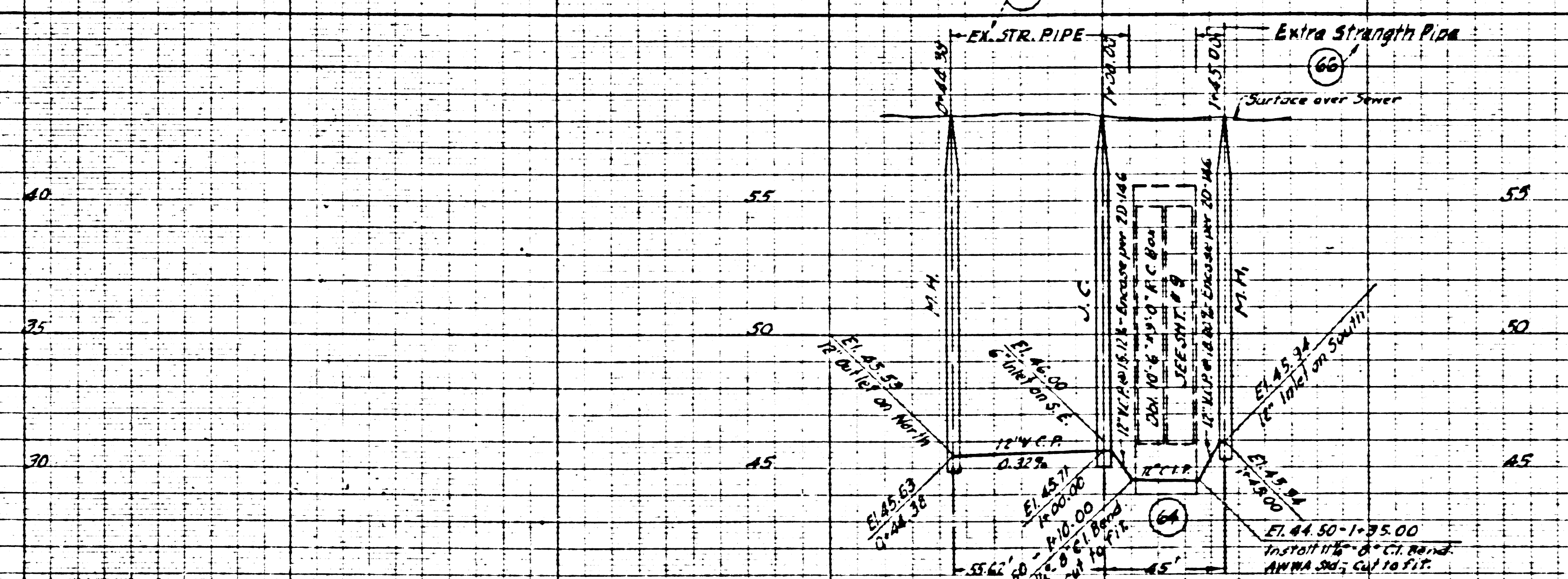
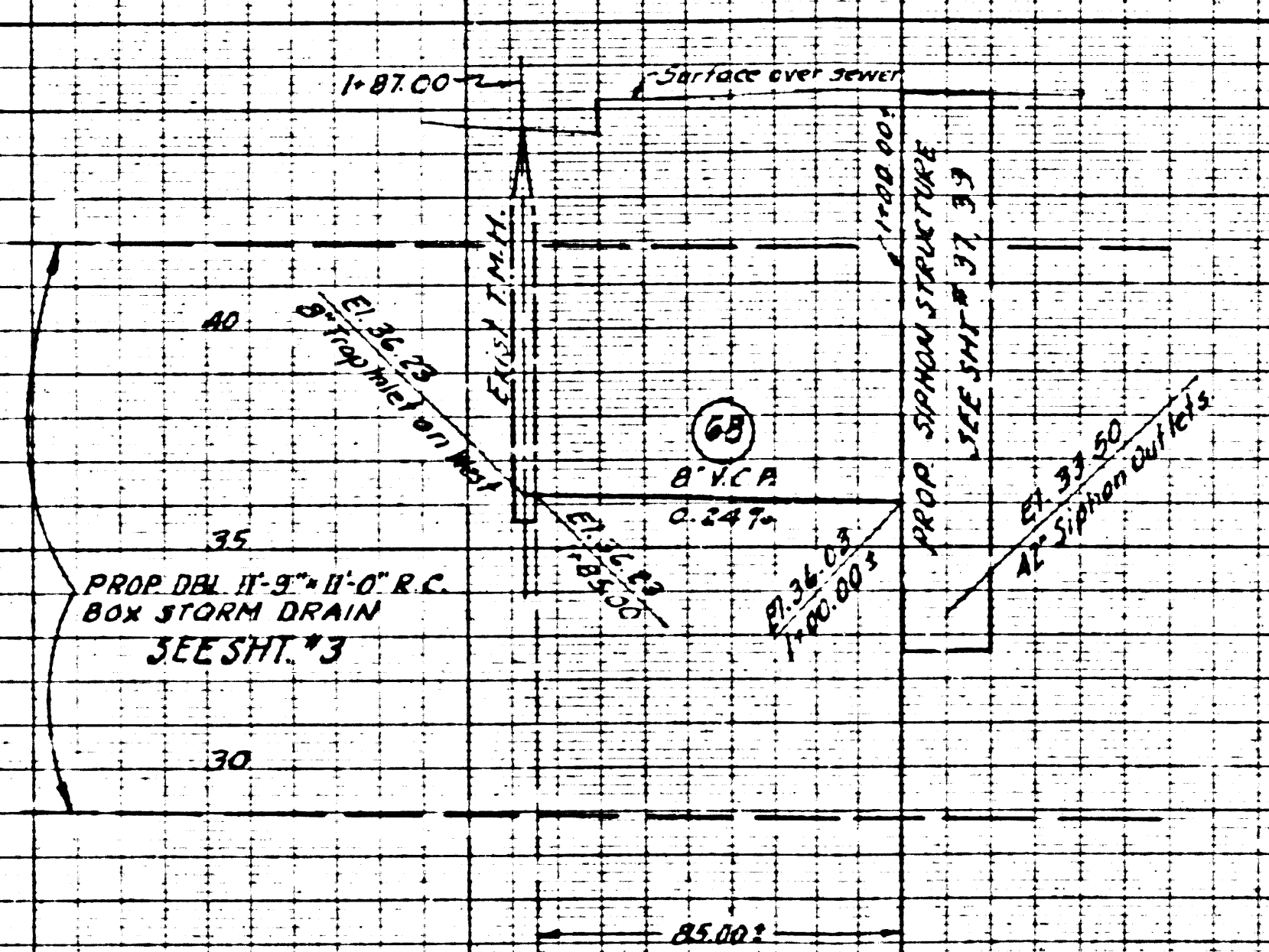
47394



Lawndale 70. Phil Rogers

REF. P.C. # 9790		COUNTY STORM DRAIN BOND ISSUE		LOS ANGELES COUNTY FLOOD CONTROL DISTRICT	
PREPARED BY JOHN A. LAMBIE COUNTY ENGINEER	REVISIONS MARK DATE DESCRIPTION ▲ 4-5-60 ASBUILT	PROJECT NO. 12 MANHATTAN BEACH BLVD LINE A SANITARY SEWER RECONSTRUCTION PLAN AND PROFILE			
RECOMMENDED BY <i>[Signature]</i> SANITATION ENGINEER	APPROVED BY <i>[Signature]</i> CHIEF ENGINEER	DATE NO. 181-12-D1-34			
DRAWN BY E.A. WOOD CHECKED BY E.A. WOOD	DESIGNED BY E.A. WOOD RECOMMENDED BY E.F. BRUMER	DATE MARCH 1957	SCALE VERT. 1"=4' HORIZ. 1"=40'	SHEET 34 OF 48	

47390



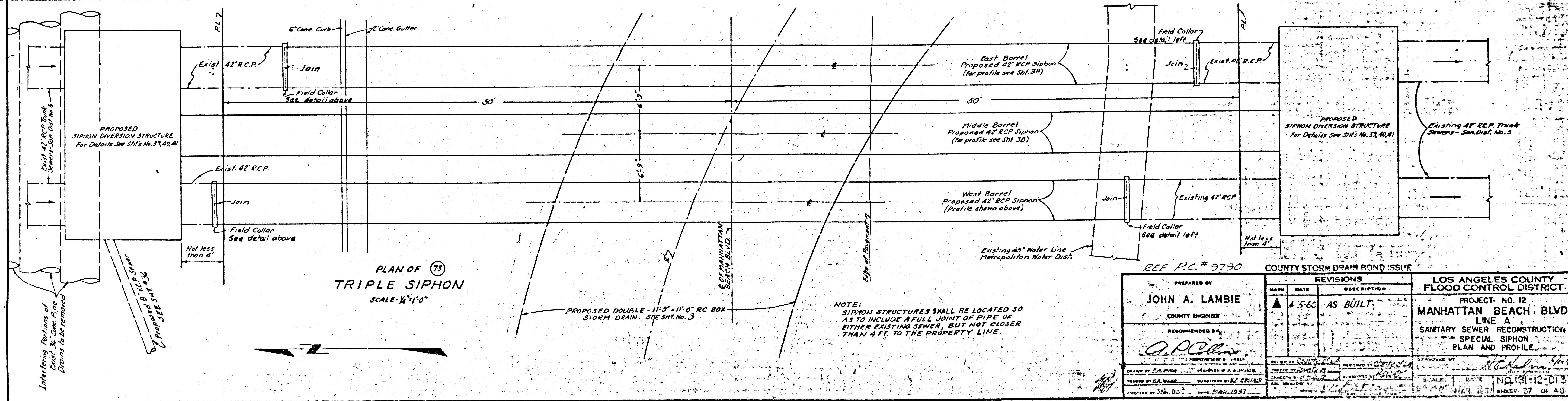
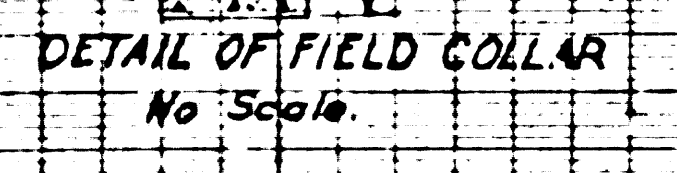
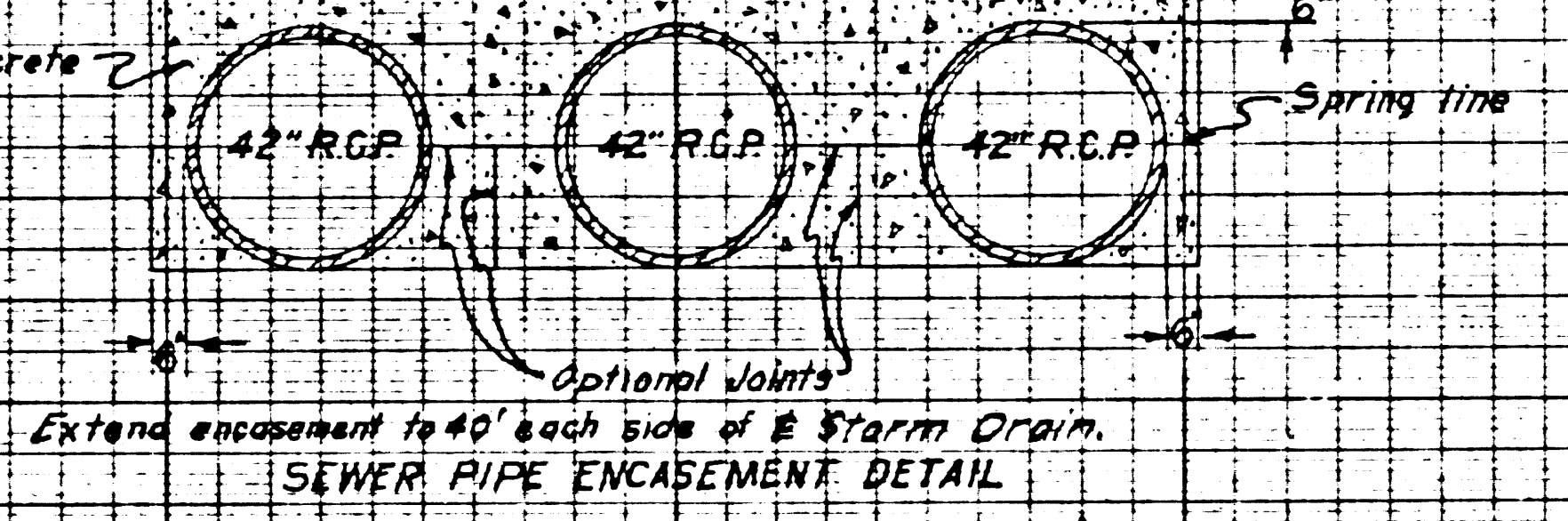
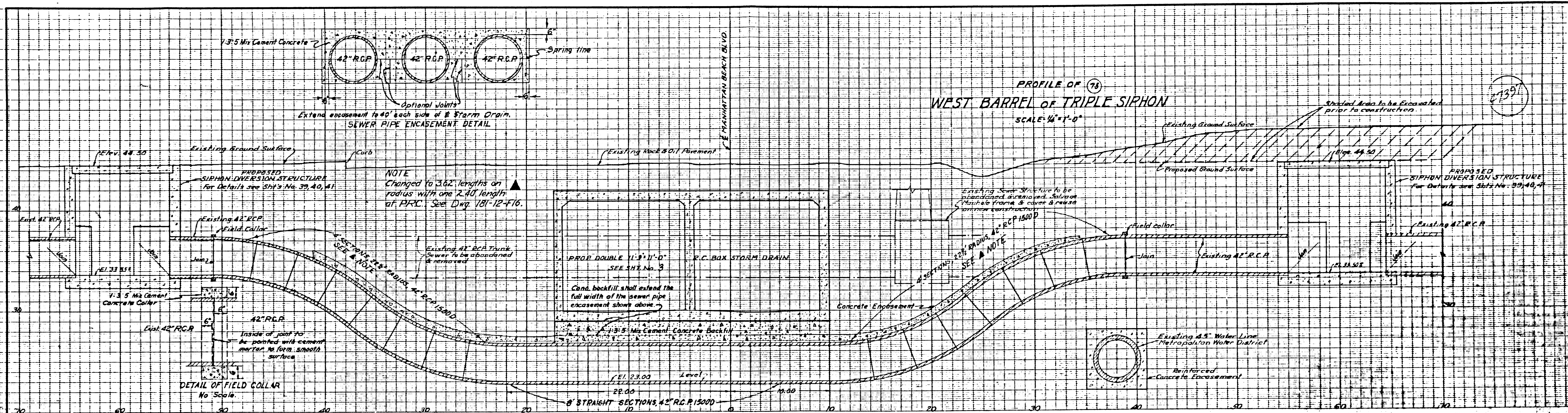
City of Redondo Beach
No Print Required

REF. P.C. # 9790 COUNTY STORM DRAIN BOND ISSUE

PREPARED BY JOHN A. LAMBIE COUNTY ENGINEER RECOMMENDED BY <i>A. P. Keller</i> SANITATION ENGINEER	<table border="1"> <thead> <tr> <th colspan="3">REVISIONS</th> </tr> <tr> <th>MARK</th> <th>DATE</th> <th>DESCRIPTION</th> </tr> </thead> <tbody> <tr> <td> </td> <td> </td> <td> </td> </tr> <tr> <td> </td> <td> </td> <td> </td> </tr> </tbody> </table>	REVISIONS			MARK	DATE	DESCRIPTION							LOS ANGELES COUNTY FLOOD CONTROL DISTRICT PROJECT NO. 12 MANHATTAN BEACH BLVD LINE A SANITARY SEWER RECONSTRUCTION PLAN AND PROFILE APPROVED BY <i>H. Nelson</i> CHIEF ENGINEER
REVISIONS														
MARK	DATE	DESCRIPTION												
DRAWN BY F. A. M. C. C. TRACED BY F. A. M. C. C. CHECKED BY F. T. DUBNER	DESIGNED BY F. A. M. C. C. SUBMITTED BY F. T. DUBNER DATE MAR. 1957	DRAWN BY <i>W. J. H. H.</i> TRACED BY <i>W. J. H. H.</i> CHECKED BY <i>W. J. H. H.</i> DATE MAR. 1957												
SCALE HORIZ. 1" = 40' VERT. 1" = 4'		DATE MAR. 1957 SHEET 36 OF 48												

DIETZEN
207-5553
2-1-57

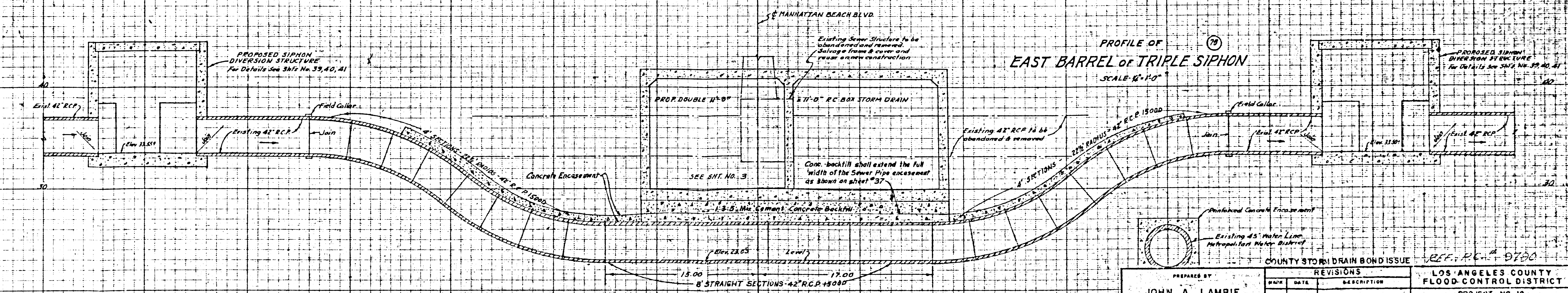
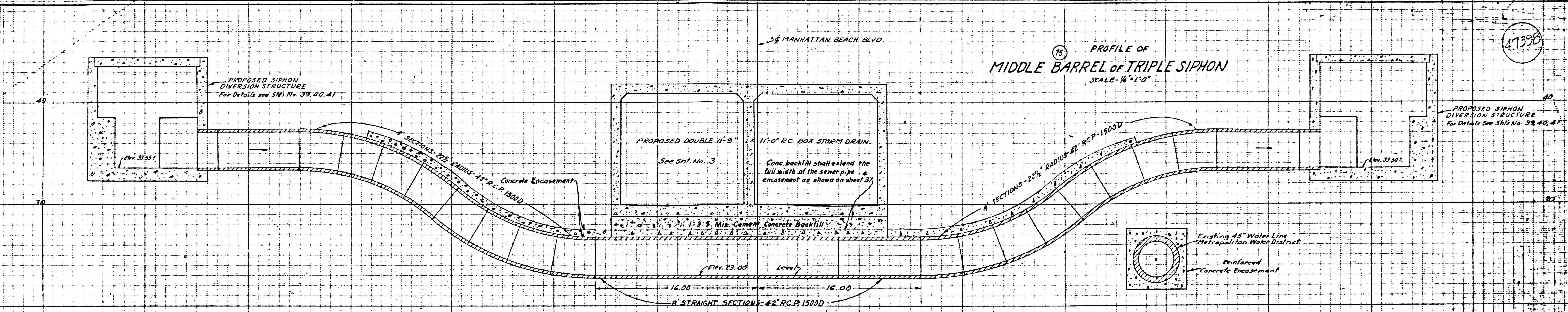
PROFILE OF ⁽⁷⁵⁾
WEST BARREL OF TRIPLE SIPHON
SCALE: 1/4" = 1'-0"

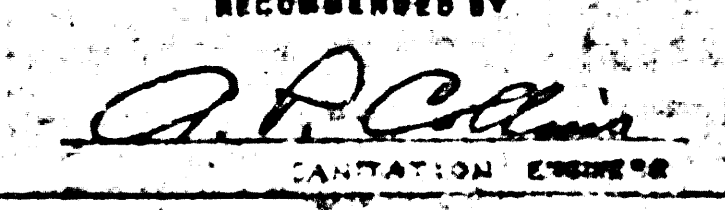


PLAN OF ⁽⁷⁵⁾
TRIPLE SIPHON
SCALE: 1/4" = 1'-0"

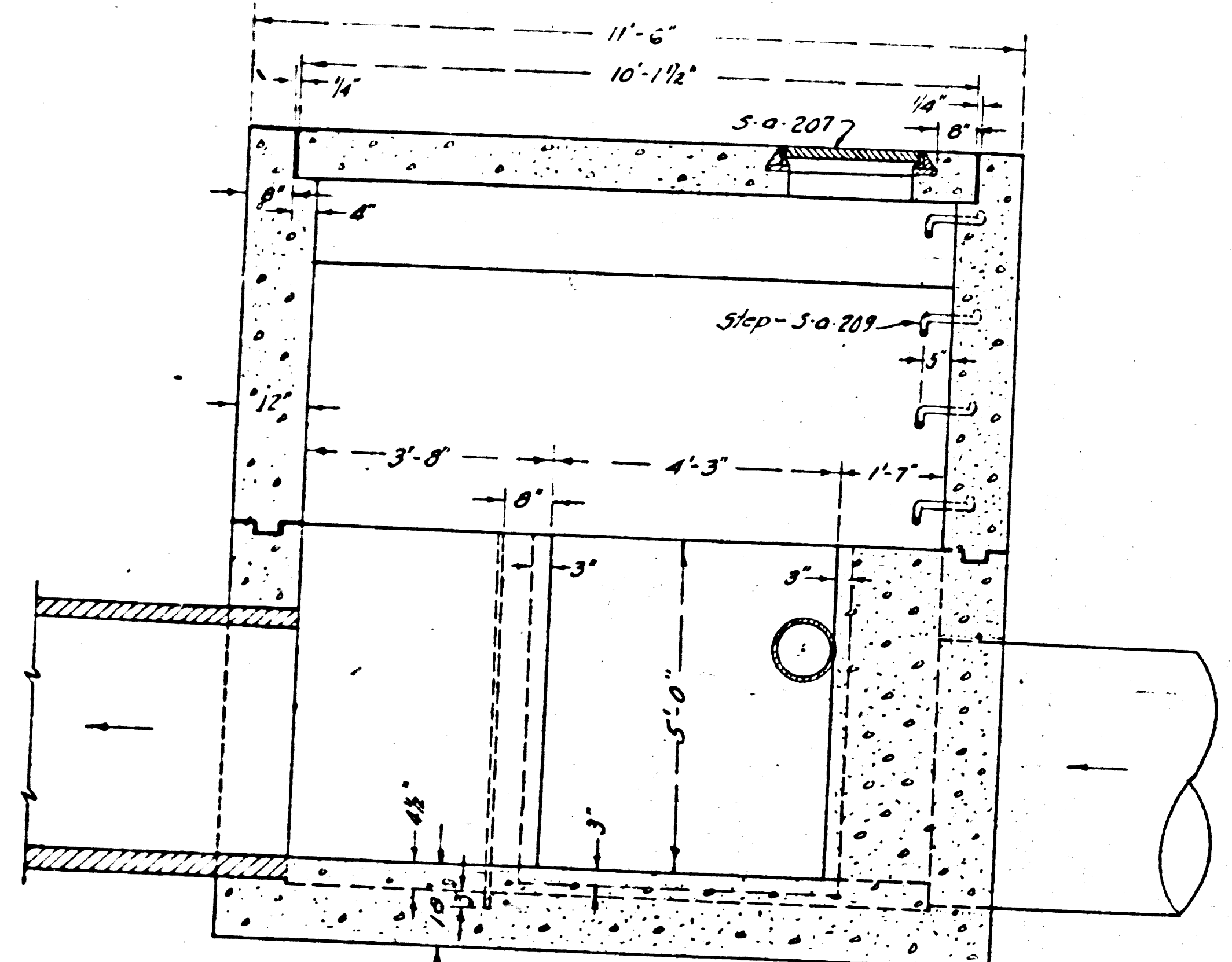
NOTE:
SIPHON STRUCTURES SHALL BE LOCATED 30 AS TO INCLUDE A FULL JOINT OF PIPE OF EITHER EXISTING SEWER, BUT NOT CLOSER THAN 4 FT. TO THE PROPERTY LINE.

PREPARED BY JOHN A. LAMBIE COUNTY ENGINEER RECOMMENDED BY <i>A.P.C.</i>		REVISIONS MARK DATE DESCRIPTION ▲ 4-5-60 AS BUILT		LOS ANGELES COUNTY FLOOD CONTROL DISTRICT PROJECT NO. 12 MANHATTAN BEACH BLVD LINE A SANITARY SEWER RECONSTRUCTION SPECIAL SIPHON PLAN AND PROFILE
CHECKED BY J.A.H. DATE 2/14/1967		COUNTY STORM DRAIN BOND ISSUE REF. P.C. # 9790		



PREPARED BY		REVISIONS		COUNTY STORM DRAIN BOND ISSUE	LOS ANGELES COUNTY FLOOD CONTROL DISTRICT
NAME	DATE	NO.	DESCRIPTION		
JOHN A. LAMBIE				REF. P.C. 9700	PROJECT NO. 12 - MANHATTAN BEACH BLVD LINE A SANITARY SEWER RECONSTRUCTION SPECIAL SIPHON PROFILE
COUNTY ENGINEER					
RECOMMENDED BY					
 COUNTY ENGINEER					
DRAWN BY E.S. GORR CHECKED BY P.A. PISANO TRACED BY F.D. & G.P. OFFICE BY S.H. D.				SCALE: 1" = 10' DATE: NOV 12 1957 SHEET 28 OF 43	

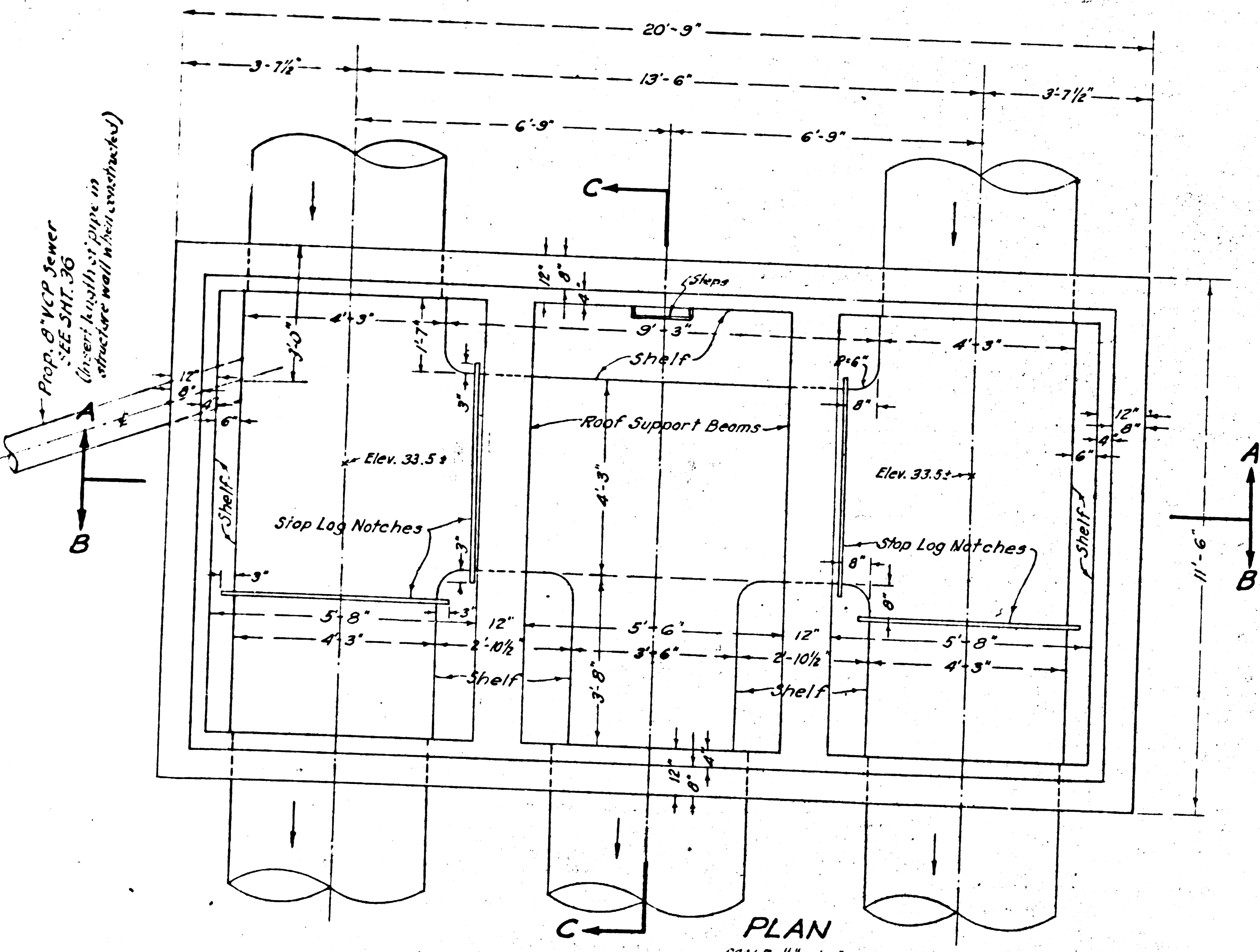
47399



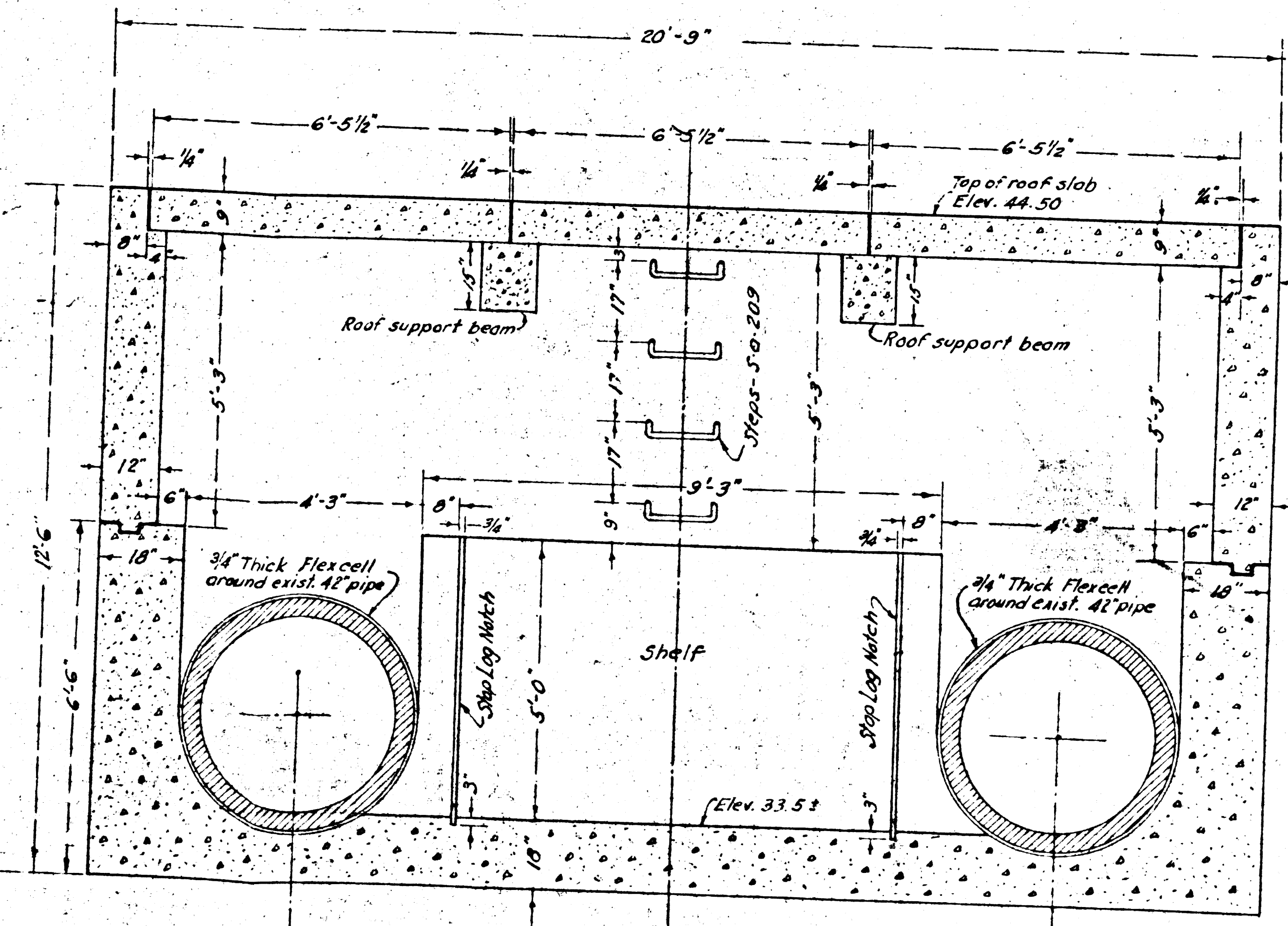
SECTION C-C
SCALE 1/2"=1'-0"

PLAN & SECTIONS SHOWING GENERAL DIMENSIONS
OF UPSTREAM
TRIPLE SIPHON DIVERSION STRUCTURE
MANHATTAN BEACH BLVD. & DOMINGUEZ CHANNEL
(DOWNSTREAM STRUCTURE SIMILAR BUT REVERSED)

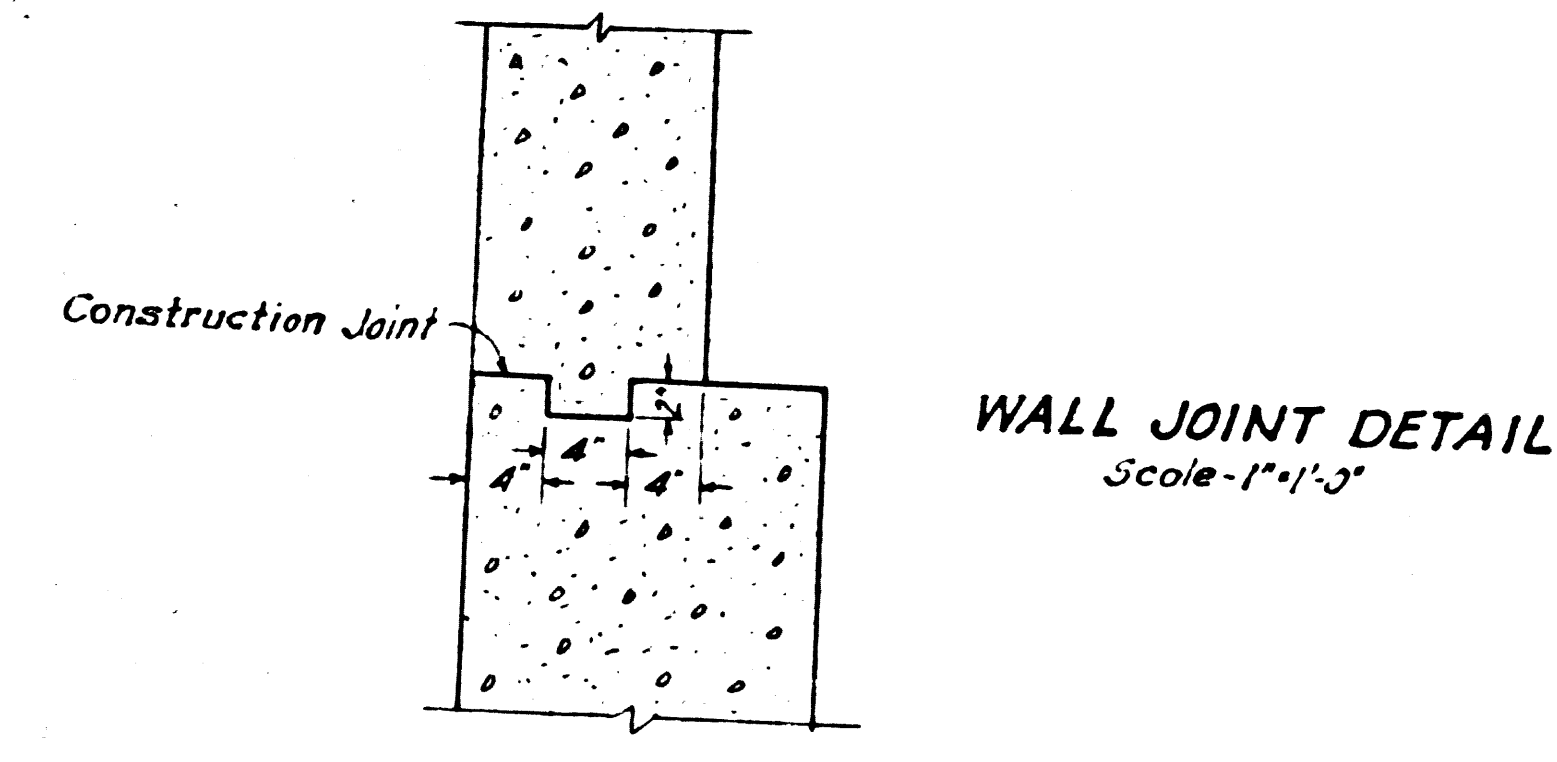
- NOTES:
1. For location drawing see Sht. No. 37
 2. For reinforcing steel details see Sht. No. 40, 41
 3. For reinforcing steel schedule see Sht. No. 41
 4. For structural details see Sht. No. 40, 41
 5. For siphon plans & profiles see Sht. No. 37, 38
 6. For construction notes & instructions see Sht. No. 40, 41
 7. Quantities shown are for one structure only.



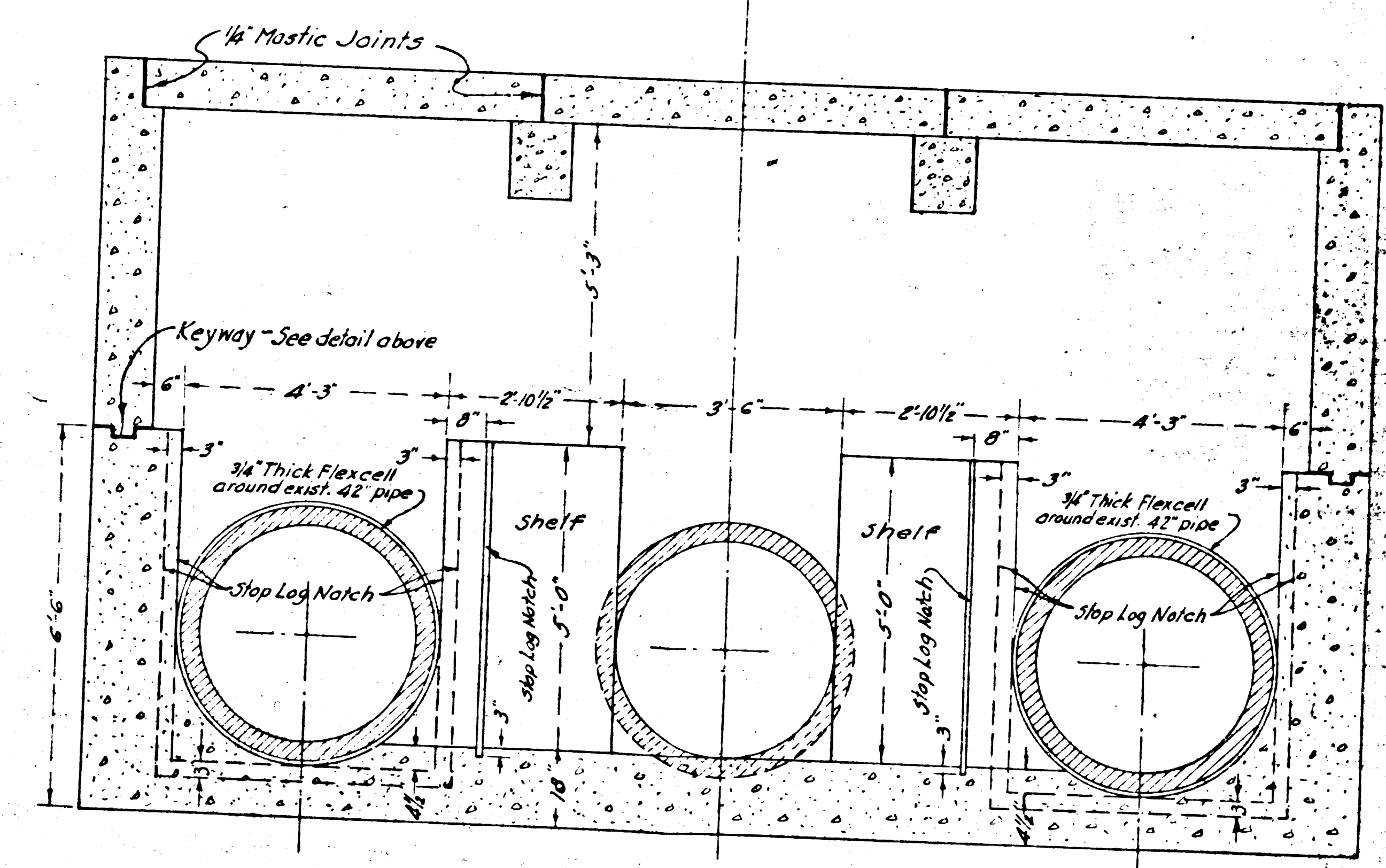
PLAN
SCALE 1/2"=1'-0"



SECTION A-A
SCALE 1/2"=1'-0"



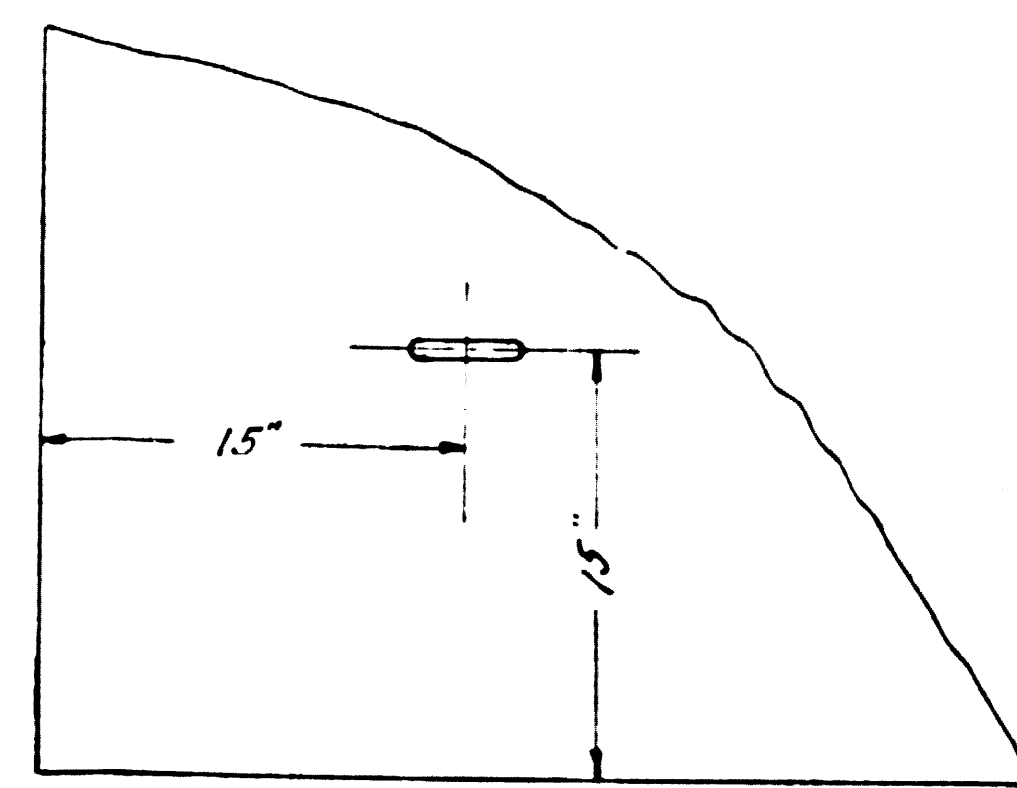
WALL JOINT DETAIL
Scale 1"=1'-3"



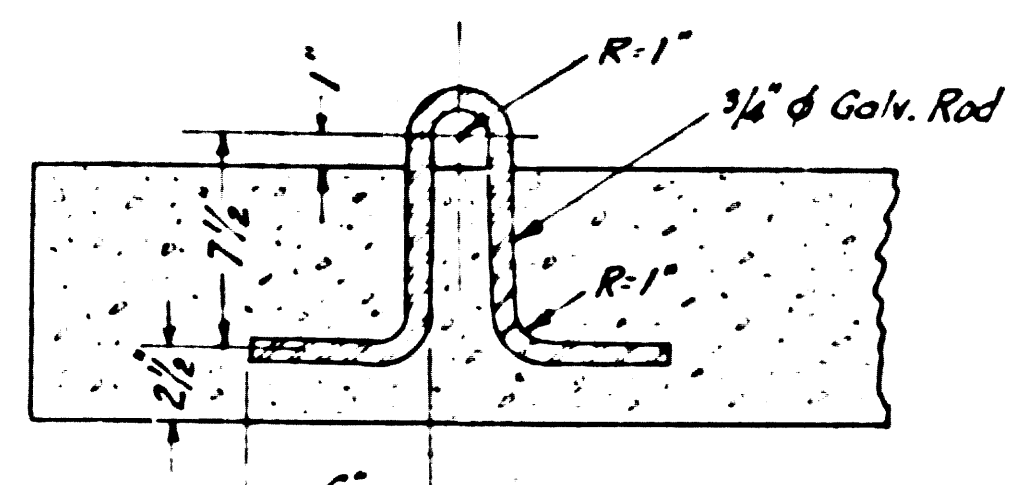
SECTION B-B
SCALE 1/2"=1'-0"

255 P.C. # 9790 COUNTY STORM DRAIN BOND ISSUE

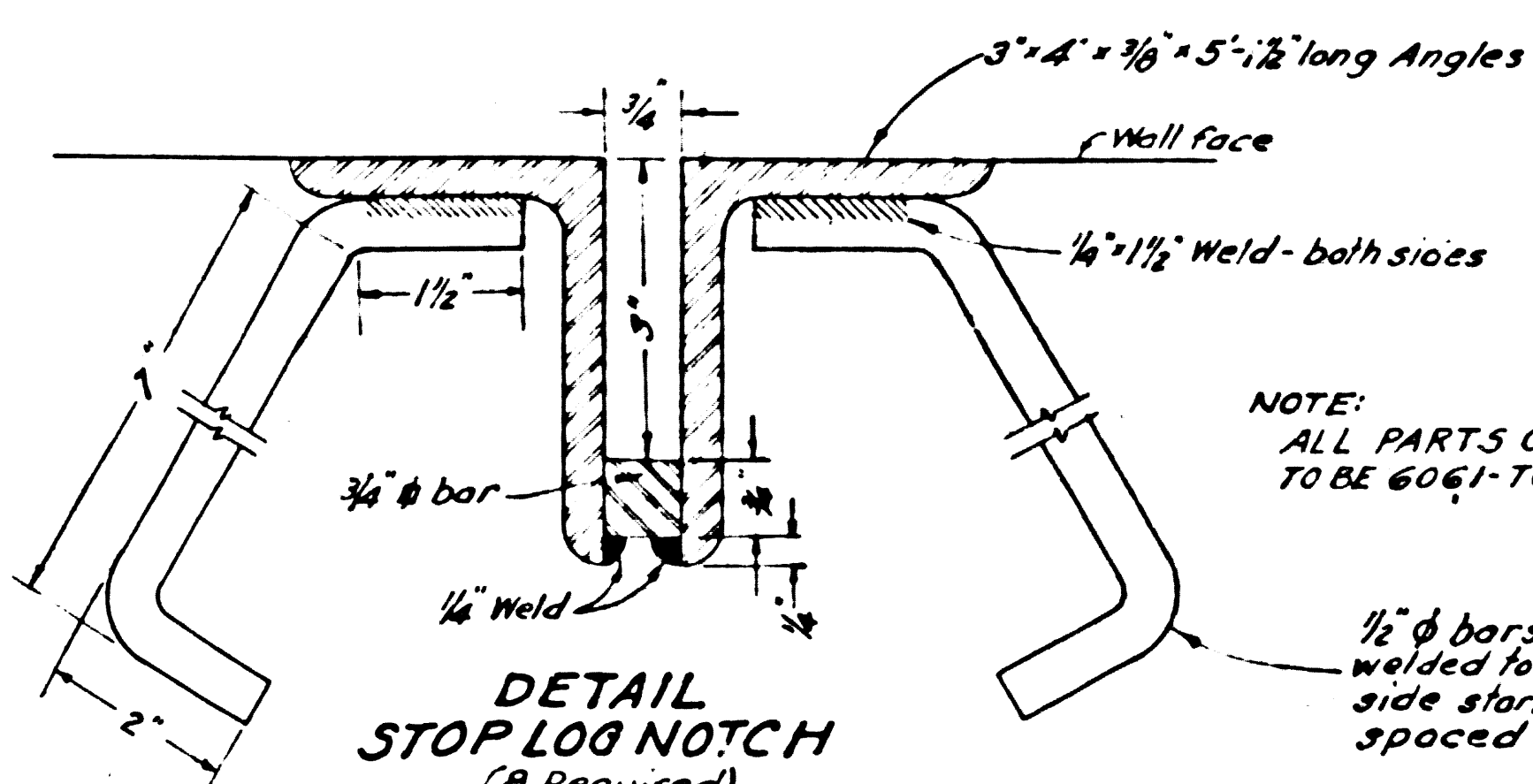
PREPARED BY JOHN A. LAMBIE COUNTY ENGINEER RECOMMENDED BY <i>A.P. Collins</i> DESIGNED BY DRAWN BY CHECKED BY DATE	REVISIONS <table border="1"> <tr> <th>MARK</th> <th>DATE</th> <th>DESCRIPTION</th> </tr> <tr> <td> </td> <td> </td> <td> </td> </tr> </table>	MARK	DATE	DESCRIPTION				LOS ANGELES COUNTY FLOOD CONTROL DISTRICT PROJECT NO. 12 MANHATTAN BEACH BLVD LINE A SANITARY SEWER RECONSTRUCTION SPECIAL SIPHON DIVERSION STRUCTURE GENERAL DETAILS APPROVED BY <i>W. Edgar</i> 6/11/63 SCALE DATE [NO. 18] 12-01-59 AS NOTED MAR 1961 SHEET 39 OF 45
MARK	DATE	DESCRIPTION						



NOTE:
Lifting rings positioned as shown
in corners of each top cover.
Place parallel to long side.

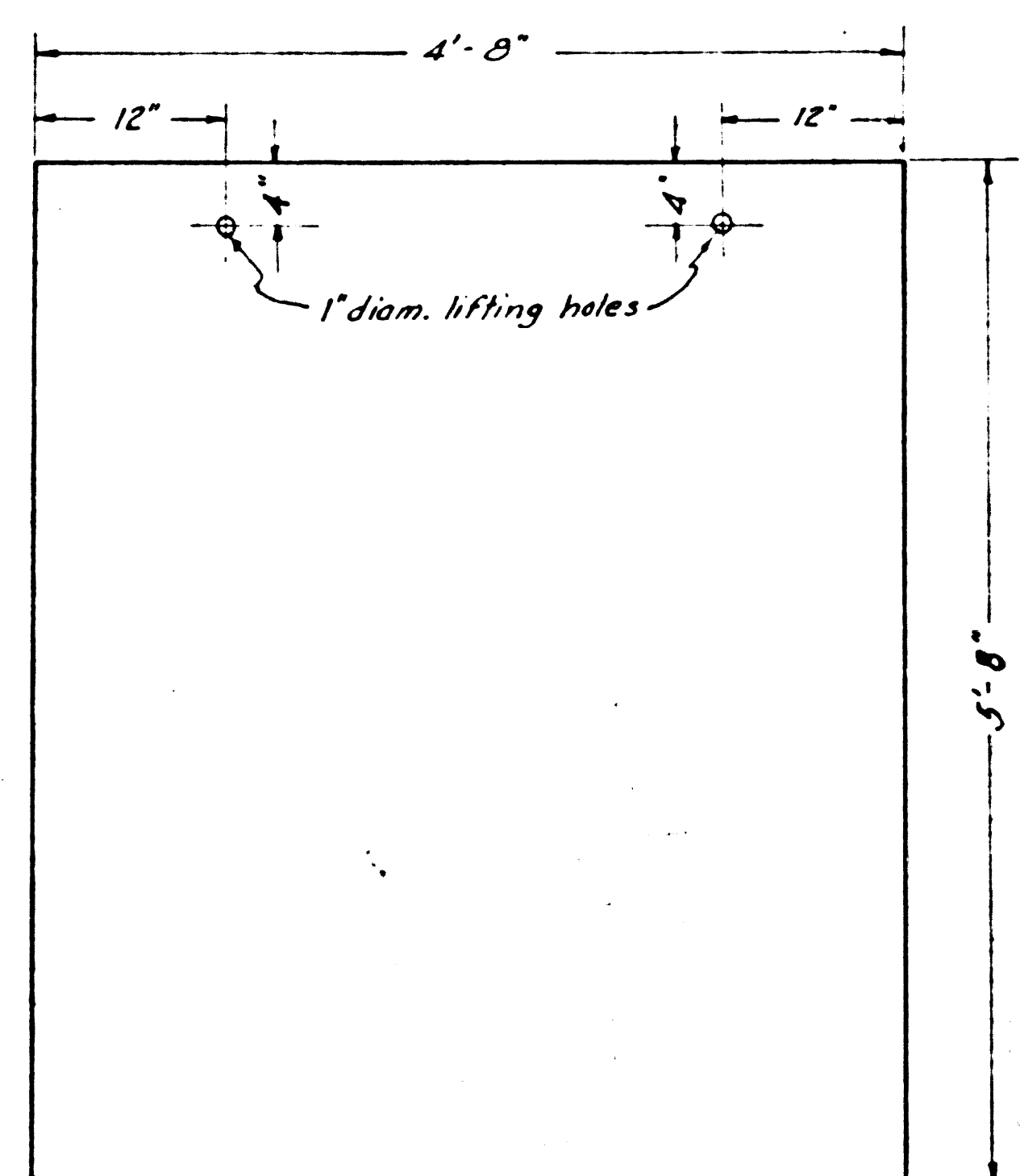


DETAIL OF LIFTING RING
(12 Required)
Scale-1/2"=1'-0"

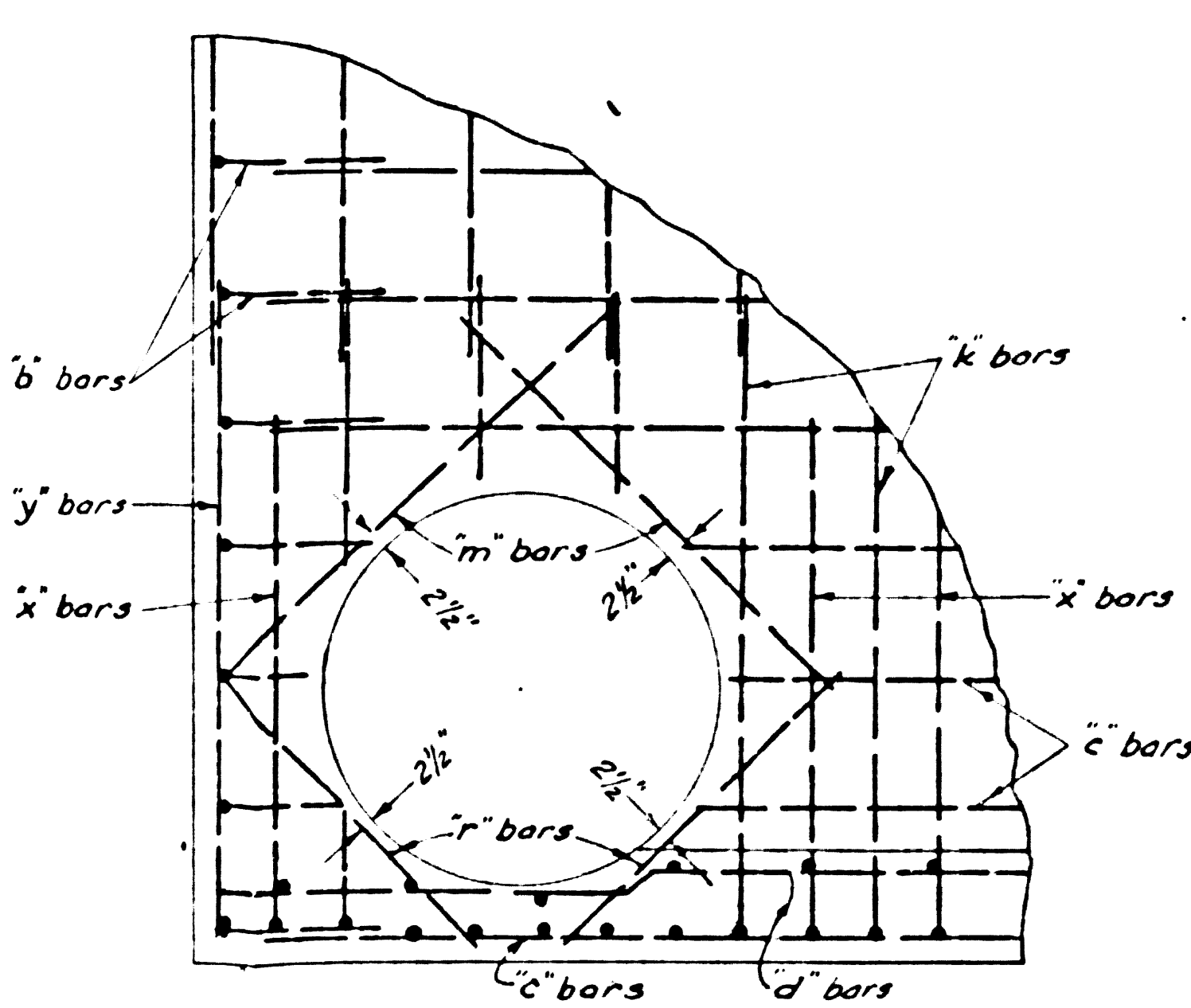


NOTE:
ALL PARTS OF STOP LOG NOTCH
TO BE 6061-T6 ALUMINUM

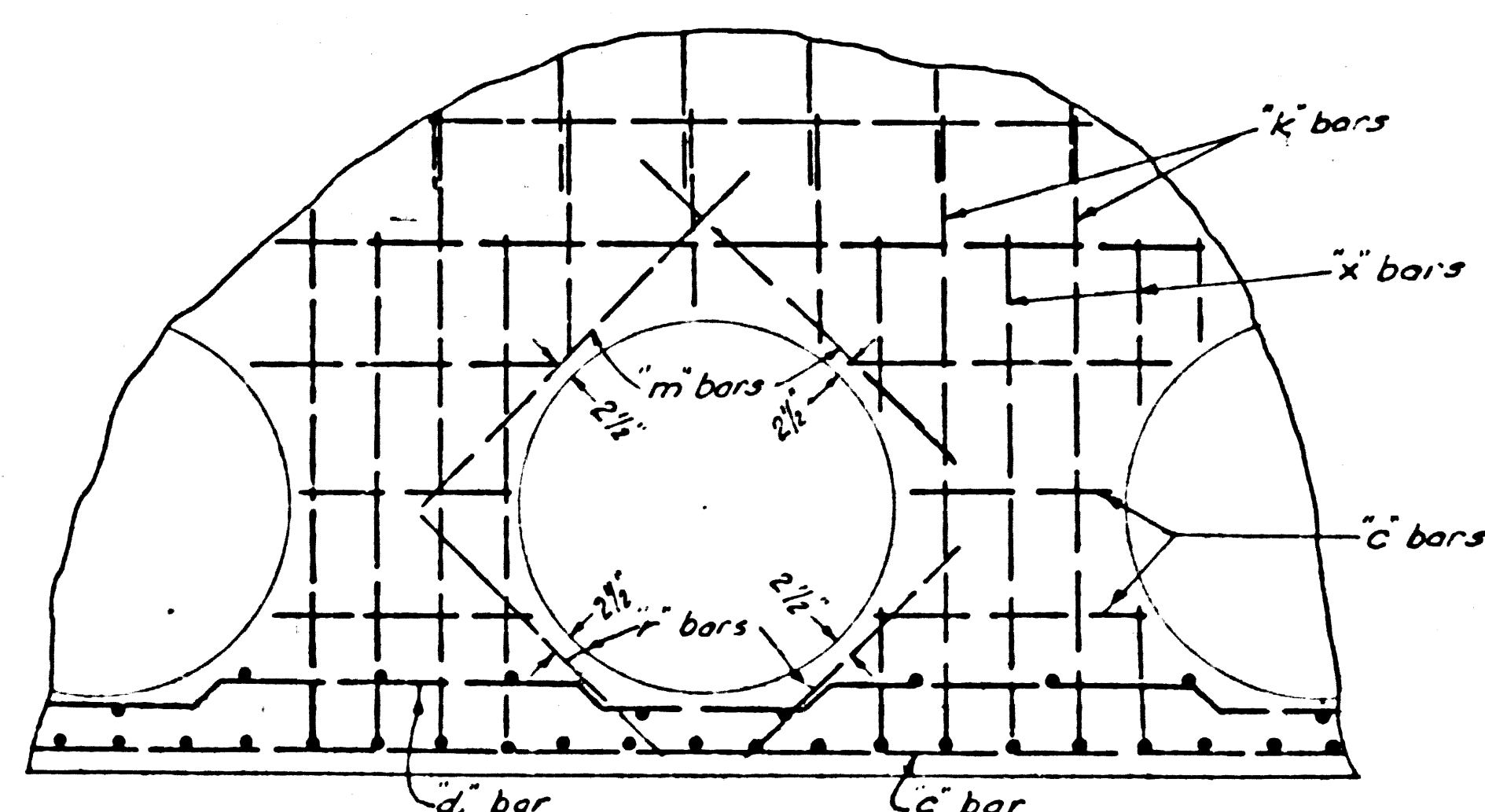
DETAIL
STOP LOG NOTCH
(8 Required)
Scale-1/2"=1'-0"



DETAIL OF STOP LOG
(1/2" thick, Alclad 7075-T6 Aluminum plate-2 required)
Scale-1"=1'-0"



TYPICAL DETAIL SHOWING REINFORCING
AROUND EXISTING 42" RC PIPES. SAME
FOR ALL FOUR OPENINGS. BARS 'f' & 'm'
PLACED ON OUTSIDE OF WALL ONLY.
SCALE-1/2"=1'-0"



DETAIL SHOWING REINFORCING AROUND
NEW 42" RC PIPE. BARS 'm' & 'n' PLACED
ON OUTSIDE OF WALL ONLY
SCALE-1/2"=1'-0"

STEEL SCHEDULE

BAR	SIZE	QUANTITY	SHAPE	NOTES
a	#5	27	11'-2"	
a	#6	6		
b	#5	20	11'-2"	①
c	#5	20	11'-2"	①
d	#5	8	4'-6" x 20'-5"	
d	#5	1	4'-6" x 20'-5"	
e	#5	40	4'-6"	
f	#4	24	7'-3"	
g	#4	18	10'-8"	
h	#5	16	6'-8"	
j	#5	40	7'-3"	①
k	#4	24	7'-3"	
m	#6	10	5'-0"	
n	#6	10	4'-0"	
s	#8	39	3'-3 1/2"	①
t	#5	12	3'-6"	
w	#8	33	4'-1 1/4"	①
x	#5	26	5'-0"	①
y	#5	4	7'-2"	
z	#5	16	20'-5"	①

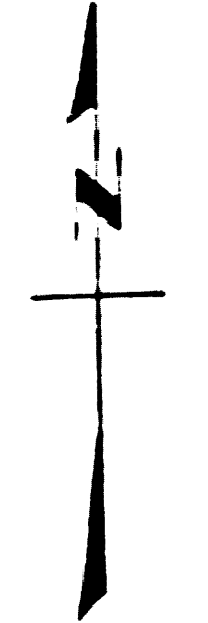
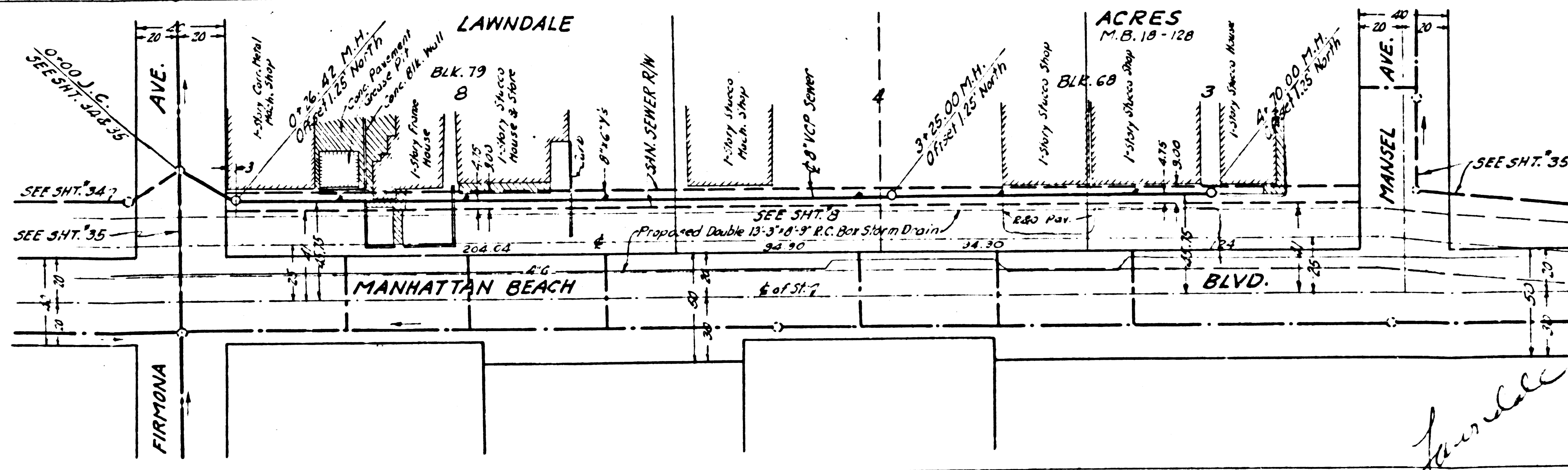
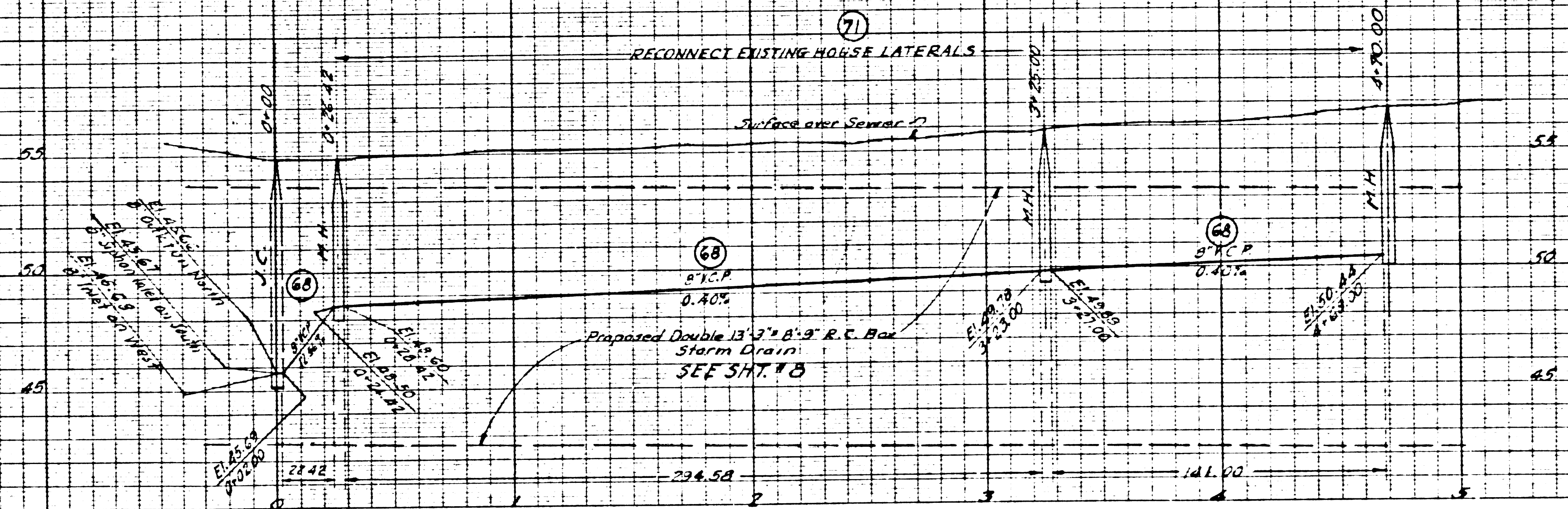
NOTES:
1. Bars indicated thus ① to be cut 2" short of openings
2. Minimum radius of bent bars, 3 diams.
3. Minimum lap of spliced bars, 20 diams.

47401

REF. P.C. #9790 COUNTY STORM DRAIN BOND ISSUE

PREPARED BY JOHN A. LAMBIE COUNTY ENGINEER	REVISIONS	LOS ANGELES COUNTY FLOOD CONTROL DISTRICT
RECOMMENDED BY <i>[Signature]</i> SANITATION ENGINEER	MARK DATE DESCRIPTION	PROJECT NO. 12 MANHATTAN BEACH BLVD LINE A SANITARY SEWER RECONSTRUCTION SPECIAL SPHON DIVERSION STRUCTURE STRUCTURAL DETAILS
DRAWN BY: E.A. RIMM CHECKED BY: J.M. JIST	DESIGNED BY: E.A. RIMM DATE: MAR. 1967	APPROVED BY: <i>[Signature]</i> SCALE: AS NOTED DATE: NO. 181-12-D1.41 SHEET 41 OF 45

47400



H.K. 2158

Lawndale
No. Kent Highway

REF. P.C. # 9790

COUNTY STORM DRAIN BOND ISSUE

PREPARED BY JOHN A. LAMBIE COUNTY ENGINEER	REVISIONS MARK DATE DESCRIPTION		LOS ANGELES COUNTY FLOOD CONTROL DISTRICT PROJECT NO. 12 MANHATTAN BEACH BLVD. LINE A SANITARY SEWER RECONSTRUCTION PLAN AND PROFILE
	RECOMMENDED BY <i>[Signature]</i> SANITATION ENGINEER	DRAWN BY DESIGNED BY CHECKED BY	
DRAWN BY E.A. WOOD CHECKED BY E.A. WOOD SUBMITTED BY E.A. WOOD DATE MAY 1957	DESIGNED BY E.A. WOOD CHECKED BY E.A. WOOD SUBMITTED BY E.A. WOOD DATE MAY 1957	SCALE VERT. 1" = 4' HORIZ. 1" = 40' DATE MAY 1957 SHEET 42 OF 48	

DIETZGEN
2007.5.16
SCALELESS

DIETZGEN
2007.5.16
SCALELESS