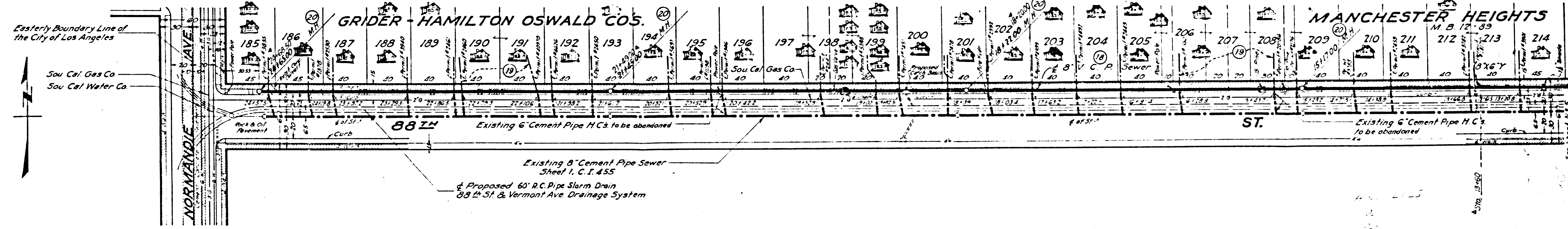
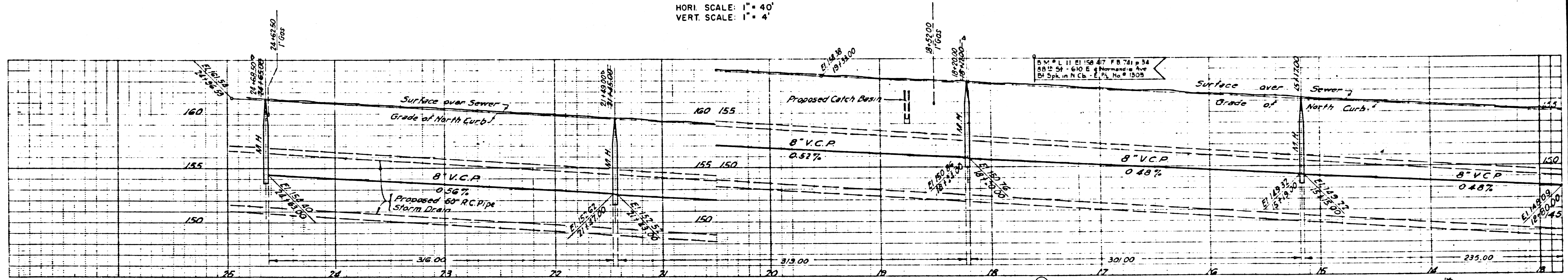


47410

PROFILE
 HORI SCALE: 1" = 40'
 VERT SCALE: 1" = 4'



PLAN
 SCALE: 1" = 40'
 SCALE OF FEET

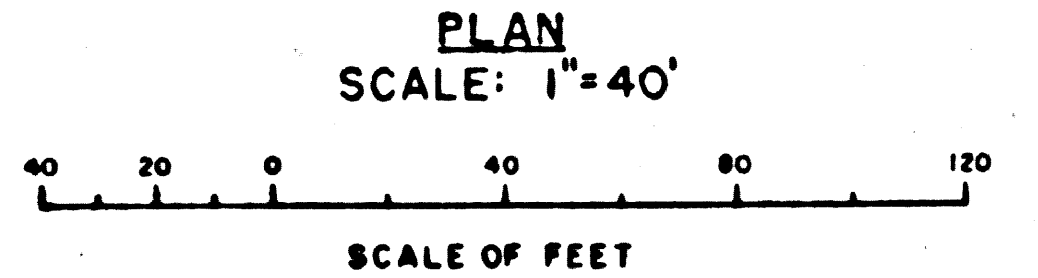
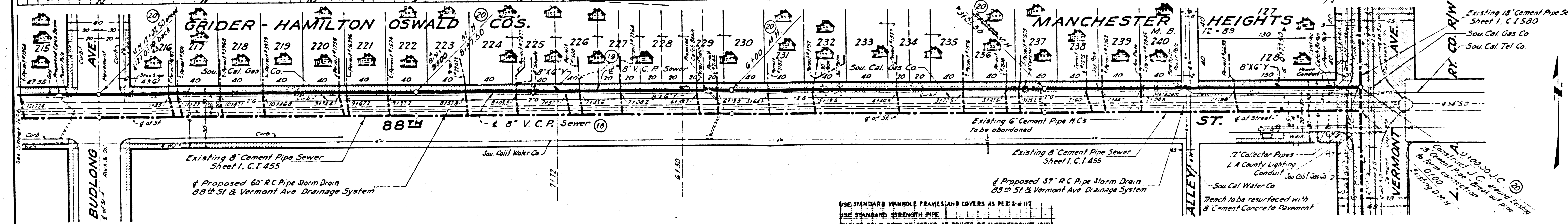
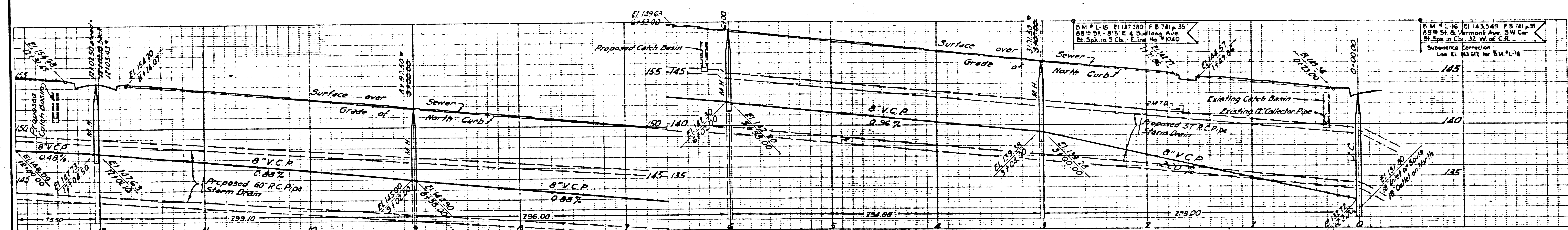
REF. P.C. # 9793

COUNTY STORM DRAIN BOND ISSUE

PREPARED BY WILLIAM J. FOX COUNTY ENGINEER & SURVEYOR		REVISIONS MARK DATE DESCRIPTION 4/6/56 "As Built" Revisions		LOS ANGELES COUNTY FLOOD CONTROL DISTRICT	
RECOMMENDED BY <i>J. Hartley</i> Construction & Storm Drain Engineer		DESIGNED BY L.A. COUNTY <i>W. J. Fox</i>		PROJECT NO. 28 88TH & VERMONT SANITARY SEWER RECONSTRUCTION STA. 12+80 TO STA. 24+65 PLAN AND PROFILE	
DRAWN BY Hance CHECKED BY Brunty		DESIGNED BY Hance SUBMITTED BY G. H. Greer DATE March, 1953		APPROVED BY <i>W. J. Fox</i> COUNTY ENGINEER	
SCALE AS SHOWN		DATE JUL. 1953		NO. 181-28-D1.E SHEET 6 OF 6	

27-17

PROFILE
 HORI. SCALE: 1" = 40'
 VERT. SCALE: 1" = 4'



FOR LEGEND
 SEE PLAN NO. S-P-64

NOTE: GRADES TO WHICH THIS IMPROVEMENT IS TO BE CONSTRUCTED ARE SHOWN ON PLANS AND PROFILES. GRADE POINTS FOR TOP OF CURB, CENTER LINE OF STREET OR CENTER LINE OF ALLEY ARE SHOWN BY CIRCLES ON PROFILES. AT ALL POINTS BETWEEN DESIGNATED POINTS THE GRADE SHALL BE ESTABLISHED SO AS TO CONFORM TO A STRAIGHT LINE DRAWN BETWEEN SAID DESIGNATED POINTS. ELEVATIONS ARE IN FEET ABOVE U. S. C. & G. S. DATUM OR MEAN SEA LEVEL, OF 1929. UNIT PRICES FOR ADDITIONAL WORK WHICH MAY BE REQUIRED BUT WHICH CANNOT BE ASCERTAINED IN ADVANCE, ARE SPECIFIED IN THE PROFILES. THIS DRAWING AND THE DATA HEREON ARE HEREBY MADE A PART OF THE SPECIFICATIONS.

USE STANDARD HANDBOLE FRAMES AND COVERS AS PER 4-117
 USE STANDARD STRENGTH PIPE
 ENCASE FOUR FEET OF SEWER AT POINTS OF INTERFERENCE WITH POLES AS PER S-8-B
 RE SURFACE TRENCH WITHIN PAVED AREA AS NOTED ON STORM DRAIN PLANS.
 RECONNECT EXISTING HOUSE SERVICES
 CLOSE ALL ABANDONED SEWER PIPE OPENINGS WITH 8" X 12" HAND-CEMENT PORTLAND
 ALL STRUCTURES SHALL BE CONSTRUCTED AS PER 2-114
 TAGS AS SPECIFIED IN SECTION 50 OF THE SPECIFICATIONS SHALL BE OMITTED.

USE CEMENT MORTAR FOR ALL VITRIFIED CLAY PIPE JOINTS.
 STOPPERS TO BE INSTALLED WITH JOINT COMPOUND BY MANUFACTURER AT HIS PLANT. SEE SEC 59, 50 OF SPECIFICATIONS
 CONCRETE PAVEMENT TO BE CUT WITH CONCRETE SAW NOT LESS THAN 2 INCHES IN DEPTH. SEE SEC 66 OF SPECIFICATIONS
 USE FORMULA NO. 1-D AS SHOWN IN SEC. 51 OF SPECIFICATIONS FOR LEAKAGE TEST

REF. P.C. # 9793

COUNTY STORM DRAIN BOND ISSUE

PREPARED BY WILLIAM J. FOX COUNTY ENGINEER & SURVEYOR		REVISIONS MARK DATE DESCRIPTION 4 9-16-36 As Built Revisions		LOS ANGELES COUNTY FLOOD CONTROL DISTRICT PROJECT NO. 28 88TH & VERMONT SANITARY SEWER RECONSTRUCTION STA. 0+00 TO STA. 12+80 PLAN AND PROFILE
RECOMMENDED BY <i>[Signature]</i> CONTRACTOR & STORM DRAIN ENGINEER		CHECKED BY: J.A. COUNTY DESIGNED BY: L.A. COUNTY APPROVED BY: <i>[Signature]</i>		
DRAWN BY: Hance CHECKED BY: Bruntly DATE: March, 1933		SCALE: AS SHOWN DATE: JUL. 1933 SHEET 5 OF 6		NO. 181-28-DI. 5