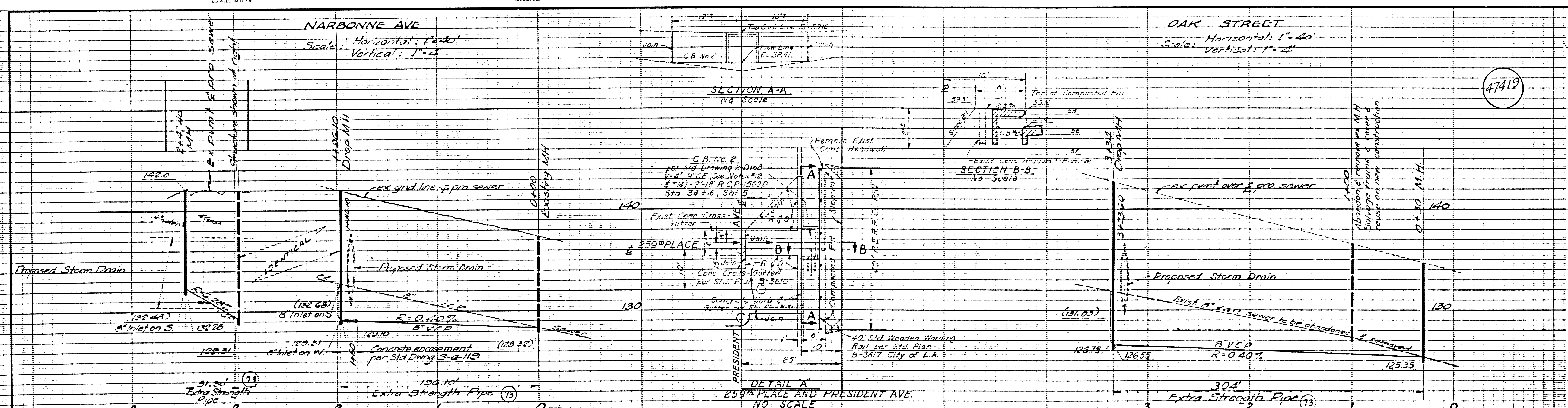
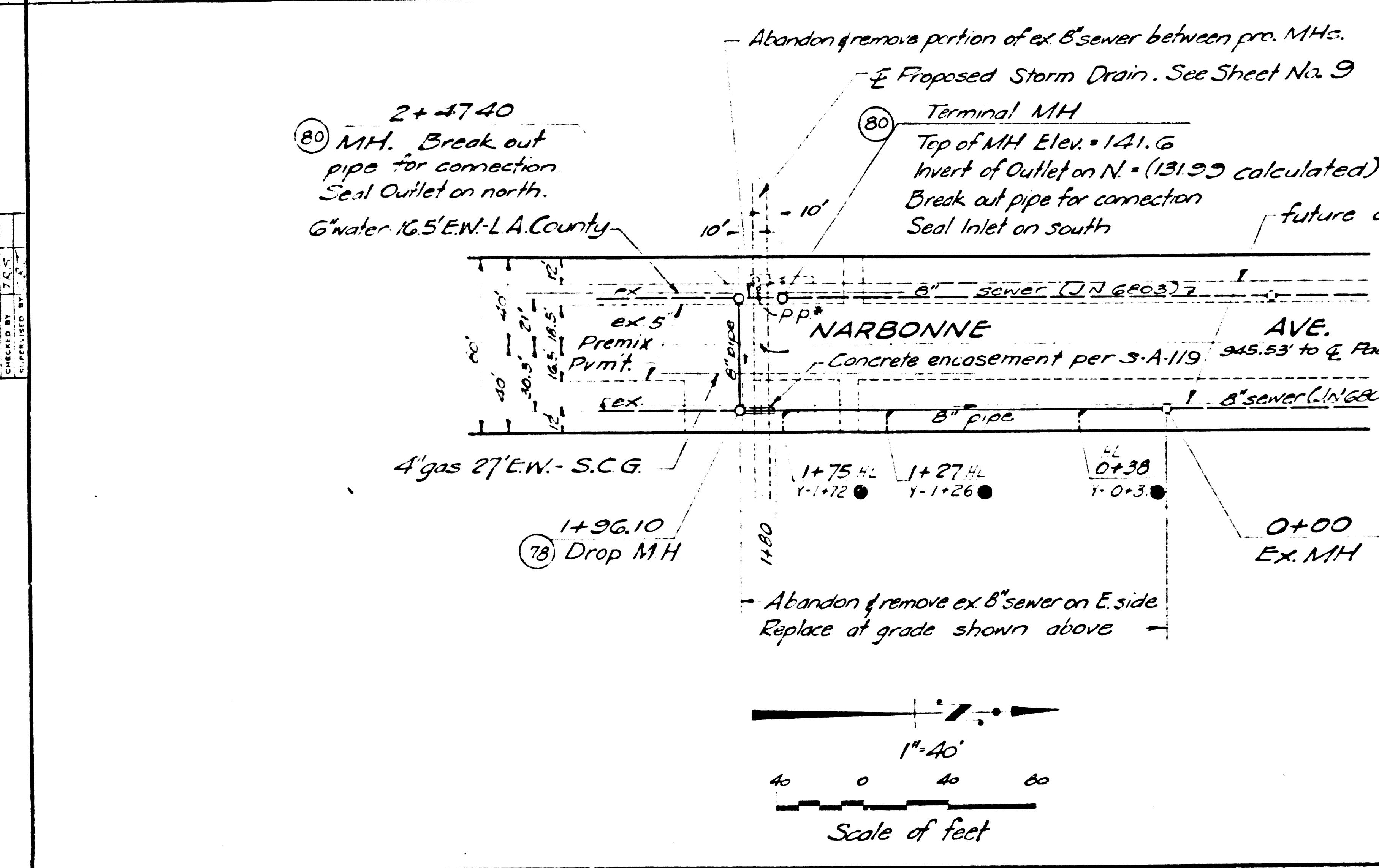


ETRIAL, DELSLEM CO
L.A. COUNTY
SEWER DISTRICT

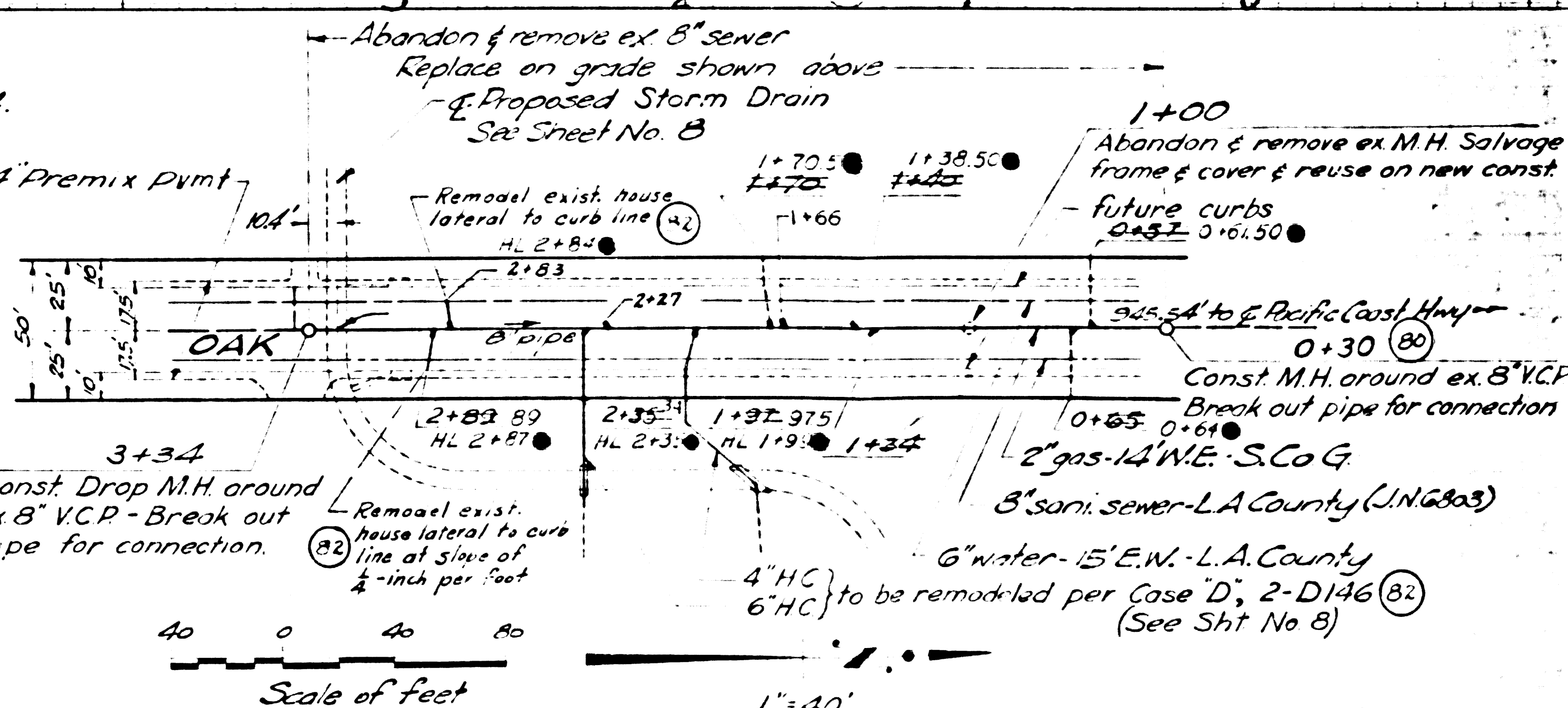
ETRIAL, DELSLEM CO
L.A. COUNTY
SEWER DISTRICT



47419



- NOTES:
1. For legend, see Std sewer Plan S-a-64
 2. Use cement mortar for all vitrified clay pipe joints.
 3. All manholes shall be Brick Sewer Structures per plan No S-a-104.
 4. Use Standard Manhole frame & Cover per plan No S-a-117.
 5. Unless otherwise shown, reconnect exist. house laterals to new sewer ex 4' Premix Pymt per 2-D146, Case F. Seal ends of abandoned portions with 6" of concrete.
 6. To compute allowable leakage refer to written specification.
 7. Resurface trenches within paved area of Narbonne Ave with 6" Premix Pavement.
 8. Resurface trenches within paved area of Oak St. with 5" Premix Pavement.



BENCH MARKS: DATUM: U.S.G.S. 1952 Precise Lead & Nail Abt. 25' W. of E of Narbonne Ave 0.7' S of N Edge of Conc. Drwy. to House No. 25935 Elev. 139.71 Ref. F.B. 25211-36
Spk. Top of W. End of Conc. Headwall (West End) Abt. 45' E of E of Oak St. 3/5 of Lot at House No. 25928 Elev. 140.64 Ref. F.B. 25211-30

APPROVED: [Signature]
COUNTY OF LOS ANGELES
JOHN A LAMBE
COUNTY ENGINEER

CITY OF LOS ANGELES
BUREAU OF ENGINEERING
SUBMITTED: July 8, 1957
BY: [Signature]
APPROVED: March 5, 1958
BY: [Signature]

REVISIONS			LOS ANGELES COUNTY FLOOD CONTROL DISTRICT
NO.	DATE	DESCRIPTION	
1	10-8-59	As Built	PROJECT NO 77 PACIFIC COAST HWY AND WESTERN AVE STORM DRAIN SANITARY SEWER RECONSTRUCTION PLAN AND PROFILE
APPROVED BY: [Signature] 6/1/58 DATE: 6/1/58			
SCALE: AS SHOWN			NOV 57
SHEET 19 OF 20			NO. 181-77-DI.19