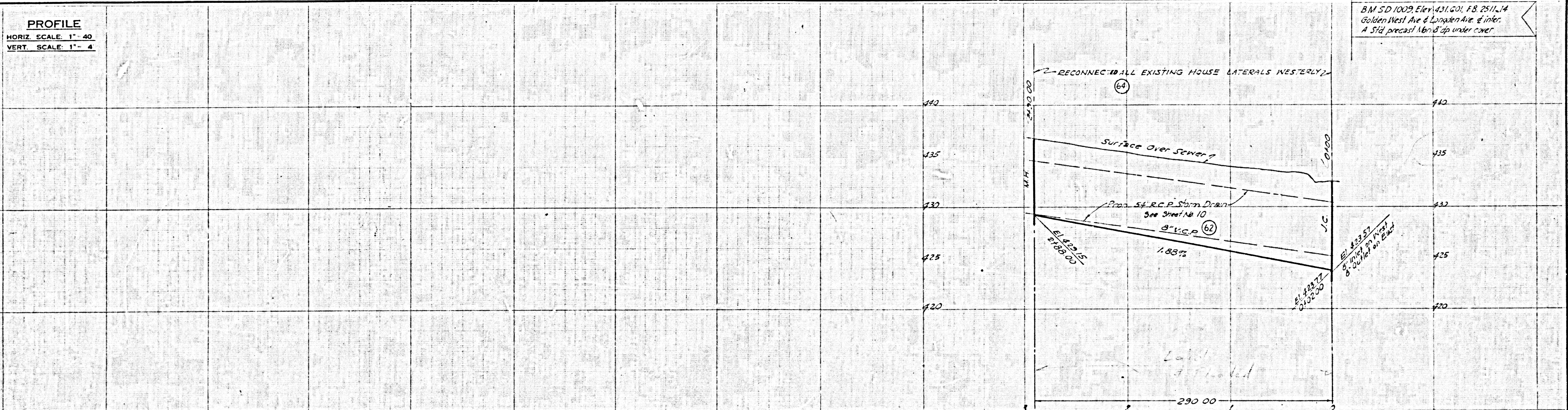


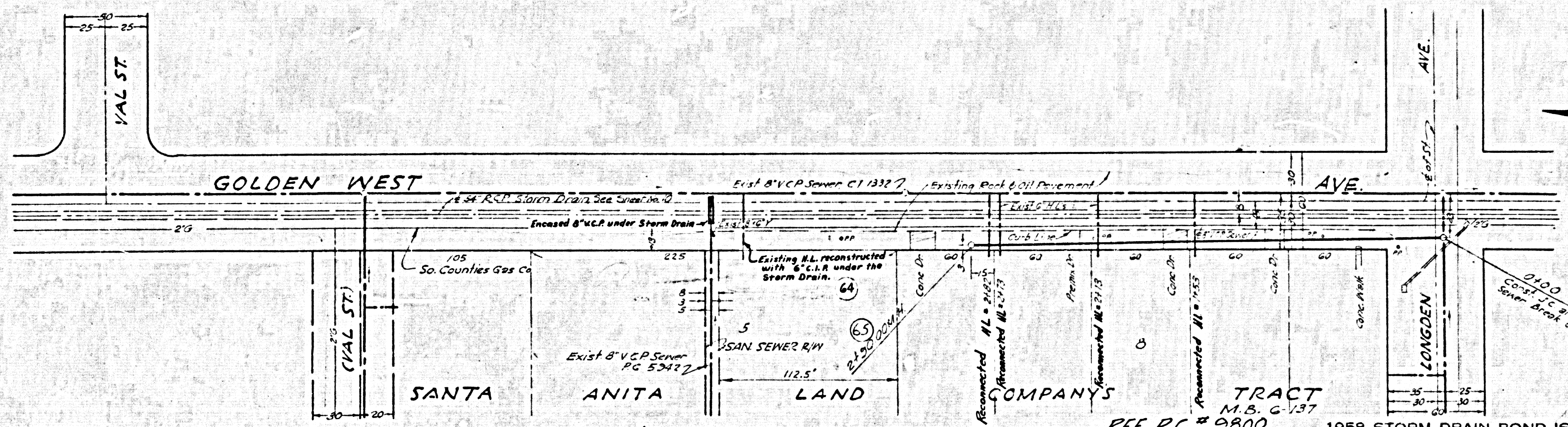
PROFILE
 HORIZ. SCALE: 1" = 40'
 VERT. SCALE: 1" = 4'

B.M. SD 1009, Elev. 431.601, F.B. 2511.14
 Golden West Ave & Longden Ave. Inter.
 A 5' dia. precast Manhole under cover.



GENERAL NOTES
 To Apply to Sheets 10 and 11

1. For Legend see Standard Plan S-a 64.
2. Use Cement mortar for all Vitrified Clay Pipe joints.
3. All structures shall be brick sewer structures as per Standard Plan S-a 104.
4. Use Standard Manhole frame and cover as per Standard Plan S-a 117.
5. 12" dia. 7' dia. sewers shall be sealed with brick cement mortar.
6. Use Formula #1 Sec. 5.4 of Standard Specifications to compute allowable leakage.
7. Reinforce trenches within the paved area of streets as noted on the Storm Drain Plans.
8. All vitrified Clay Pipes shall be extra strength.



PLAN
 SCALE 1" = 40'

PREPARED BY JOHN A. LAMBIE COUNTY ENGINEER		REVISIONS MARK DATE DESCRIPTION		LOS ANGELES COUNTY FLOOD CONTROL DISTRICT PROJECT NO. 525 EAST TEMPLE CITY
RECOMMENDED BY <i>Richard E. Kline</i> ASSISTANT SANITATION ENGINEER		DRAWN BY: <i>UNO</i> DESIGNED BY: <i>UNO</i> CHECKED BY: <i>UNO</i> SUBMITTED BY: <i>UNO</i> REVISIONS BY: <i>UNO</i> DATE: <i>NOV 1961</i>		
REF. P.C. # 9800		1958 STORM DRAIN BOND ISSUE		SANITARY SEWER RECONSTRUCTION PLAN AND PROFILE APPROVED BY: <i>M.E. Schick</i> 11-15-61 CIVIL ENGINEER
SCALE: 1" = 40' DATE: DEC. 62		SHEET 17 OF 20		NO. 276-525-D317

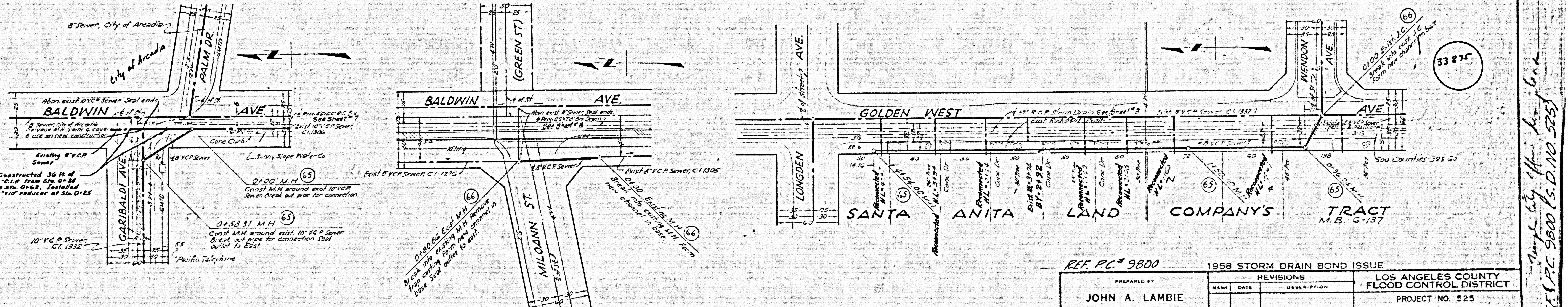
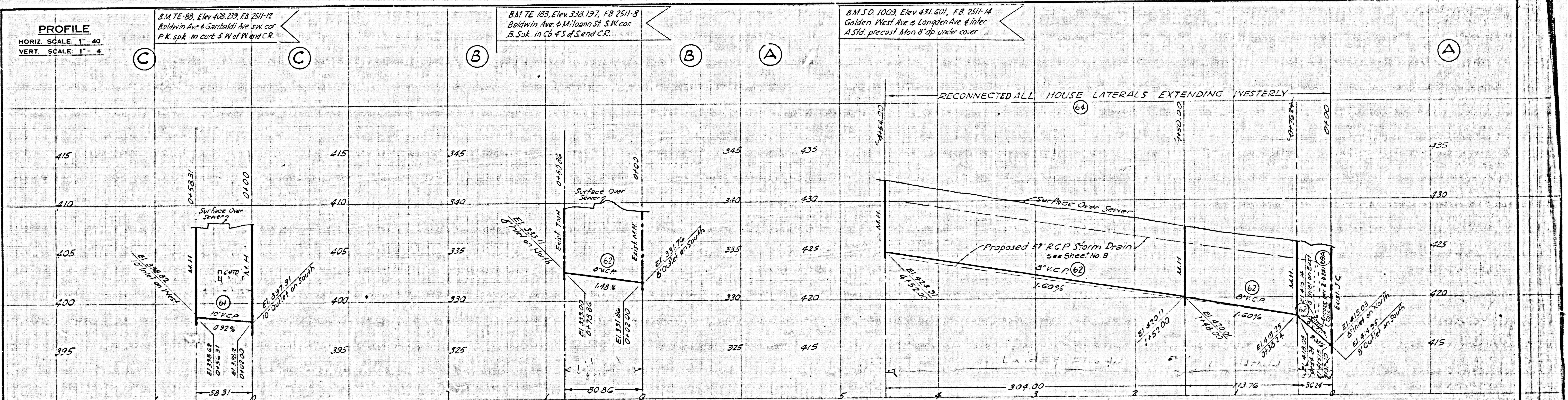
33974

PROFILE
 HORIZ. SCALE: 1" = 40'
 VERT. SCALE: 1" = 4'

B.M. TE 88, Elev 408.239, FB 2511-12
 Baldwin Ave & Garibaldi Ave SW cor
 P.K. spk. in cut 5' W of W end CR.

B.M. TE 183, Elev 338.797, FB 2511-8
 Baldwin Ave & Miloann St. SW cor
 B.Sk. in C&A'S of S end CR.

B.M. S.D. 1003, Elev 431.901, FB 2511-14
 Golden West Ave & Longden Ave & inter.
 A 5' dia. precast Man 8' dia. under cover



PLAN
 SCALE: 1" = 40'

REF. P.C. 9800 1958 STORM DRAIN BOND ISSUE

PREPARED BY JOHN A. LAMBIE COUNTY ENGINEER RECOMMENDED BY <i>[Signature]</i> ASSISTANT SANITATION ENGINEER	REVISIONS MARK DATE DESCRIPTION		LOS ANGELES COUNTY FLOOD CONTROL DISTRICT PROJECT NO. 525 EAST TEMPLE CITY SANITARY SEWER RECONSTRUCTION PLAN AND PROFILE
	DRAWN BY CHECKED BY DATE	DESIGNED BY SUBMITTED BY DATE	

Simple City Office for G.R.K.
 REF. P.C. 9800 (S.D. NO. 525)