

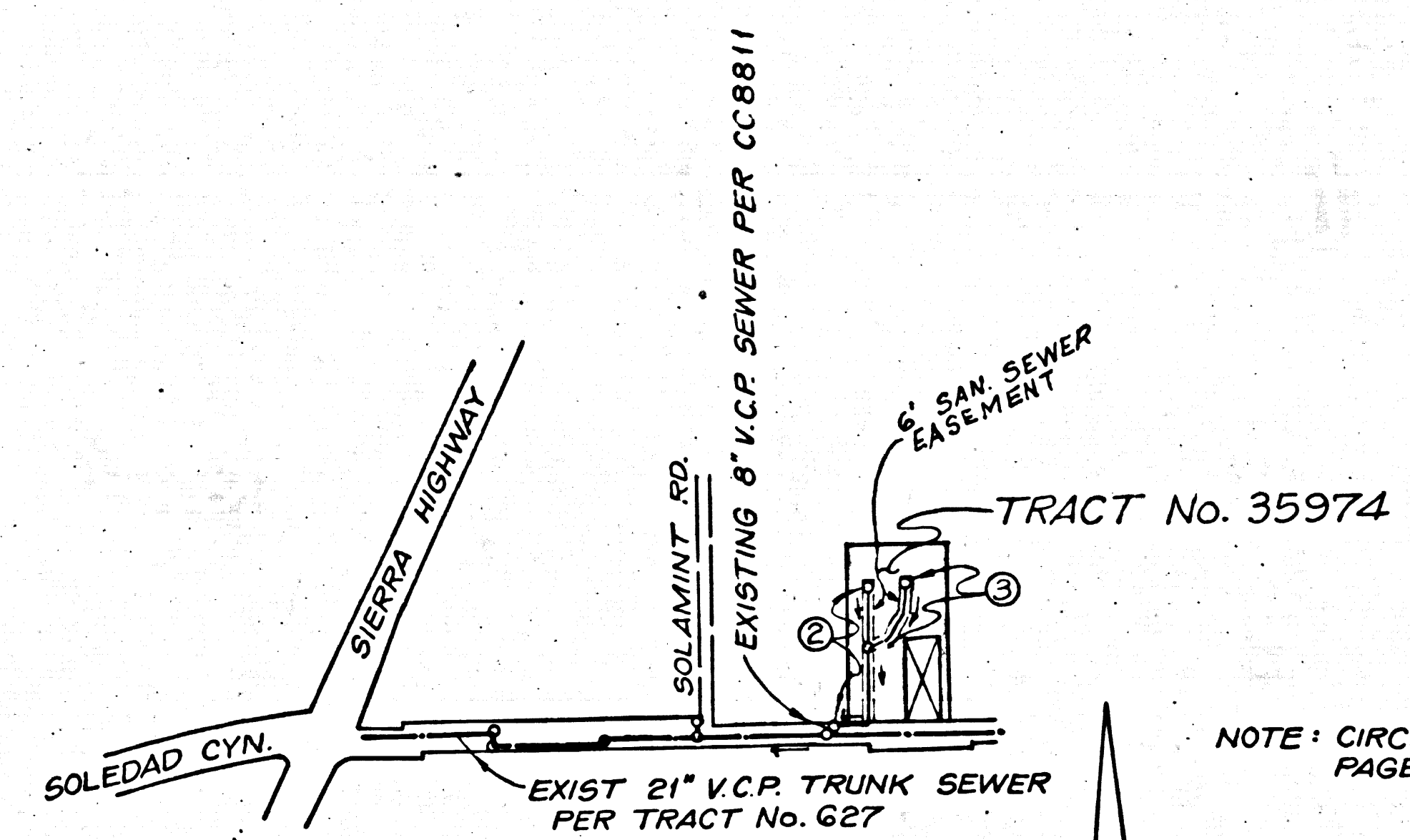
B.M. "D-26" R.D.L.D. ELEV. 1441.47 (ADJ.)  
 2615-192  
 L & T SLY END GAS ISLAND OF L.A.  
 CO. FIRE STATION 107 & 60' NLY  
 SOLEDAD CANYON ROAD  
 NEWHALL QUAD. 19 72

REVISION NO. 1 DATE 8/1/81  
 Revised Location of M.H. of Station 1443.92 & Sewer  
 Alignment from Sta. 1400 to Sta. 3+129.94 on Page 3  
 APPROVED Ralph Davis August 9/15/81 16 993  
 Office of County Engineer / R.E. NO.

TRACT No. 35974  
 PRIVATE CONTRACT NO. 9809

W.S. G2  
 2 SHEETS, 3 PAGES  
 SCALE: VERT. 1" = 4'  
 HORIZ. 1" = 40'  
 JANUARY, 1980  
 PREPARED IN THE OFFICES OF  
 MILLER ENGINEERING CO.  
 5939 KESTER AVE.  
 VAN NUYS, CA. 91411  
 BY *Charles K. Miller*  
 REG. C. E. NO. 19416

4966A



INDEX MAP  
 SCALE: 1" = 600'  
 TRACT No. 35974  
 P.C. 9809

NOTE: CIRCLED NUMBERS INDICATE PAGE NUMBERS.

BEFORE BREAKING INTO OR CONSTRUCTION OF A COUNTY SANITATION DISTRICT SEWER AND PRIOR TO FINAL ACCEPTANCE OF THE PROJECT, SANITATION DISTRICT INSPECTOR SHALL BE NOTIFIED BY PHONE SO THAT REQUIRED INSPECTION CAN BE MADE.

NO CONNECTION FROM THE REMOVAL OF INDUSTRIAL WASTES SHALL BE MADE TO EXISTING SEWER OR TRUNK SEWERS UNLESS A PERMIT FOR INDUSTRIAL WASTEWATER REUSE HAS BEEN ISSUED BY THE SANITATION DISTRICTS FOR SAID CONNECTION.

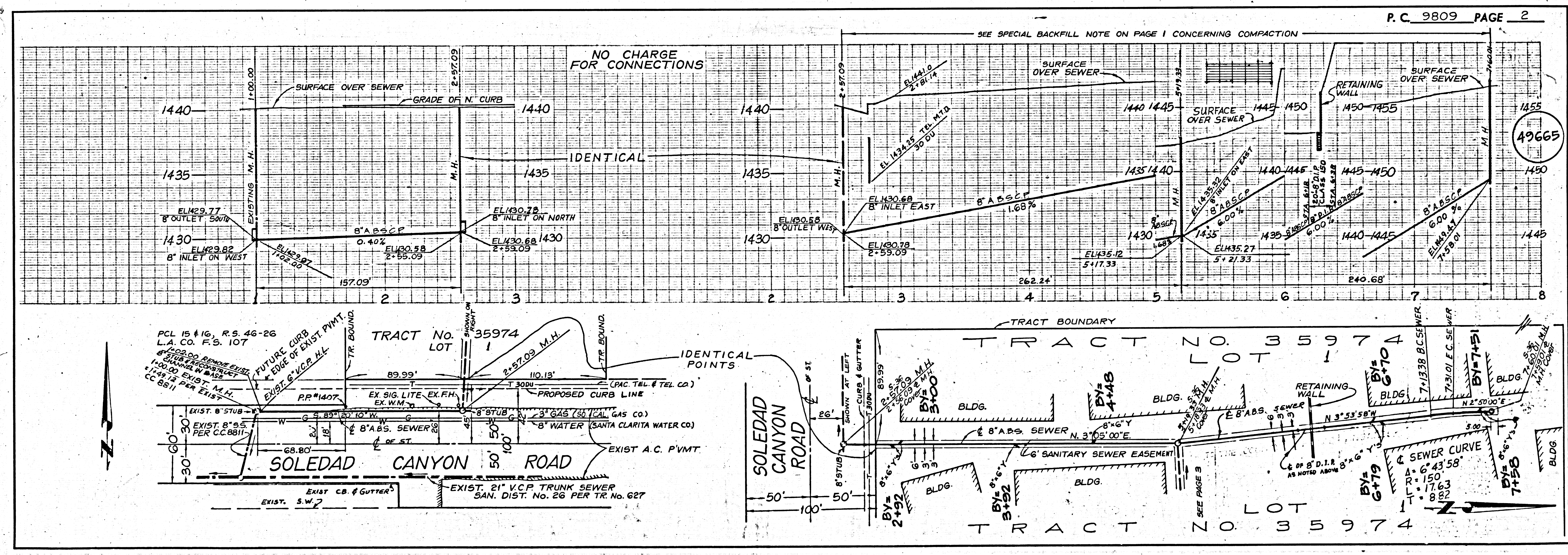
- GENERAL NOTES:**
1. ELEVATIONS ARE IN FEET ABOVE U.S.C. & G.S. SEA LEVEL DATUM OF 1929.
  2. NO REVISIONS SHALL BE MADE IN THESE PLANS WITHOUT THE APPROVAL OF THE COUNTY ENGINEER.
  3. NO REPRESENTATIVE OF THE COUNTY ENGINEER WILL SURVEY OR SET L&T. THE POSITION OF THE WORK.
  4. CHANGES TO WHICH THE IMPROVEMENT IS TO BE CONSTRUCTED ARE SHOWN ON PLANS AND PROFILE GRADE SHEETS FOR THE WORK.
  5. CURVE CENTER LINE OF STREETS OR CENTER LINE OF ALLEYS ARE SHOWN BY DASHED LINES. AT ALL POINTS BETWEEN DESIGNATED POINTS THE GRADE SHALL BE ESTABLISHED SO AS TO CONFORM TO A STRAIGHT LINE DRAWN BETWEEN SAID DESIGNATED POINTS.
  6. THE PRIVATE ENGINEER SHALL FURNISH THE COUNTY ENGINEER WITH GRADE SHEETS AND STATIONING FOR ALL HOUSE LATERALS AND "T" OR "Y" BRANCHES AND SHALL PROVIDE STAKES FOR THEM AT THEIR PROPER LOCATIONS WITH STATIONING PLAINLY MARKED. ALL HOUSE LATERALS SHALL BE CONSTRUCTED IN A STRAIGHT ALIGNMENT AT RIGHT ANGLES FROM THE MAIN LINE SEWER EXCEPT AS SHOWN ON THE PLANS. HOUSE LATERALS FROM CHIMNEYS SHALL NOT HAVE AN ANGLE OF LESS THAN 45° WITH THE MAIN LINE SEWER. ANY CHANGE IN ALIGNMENT SHALL BE REQUESTED IN WRITING BY THE PRIVATE ENGINEER.
  7. THE PRIVATE ENGINEER SHALL FURNISH THE HOUSE LATERAL DEPTH AT THE PROPERTY LINE BELOW THE TOP OF CURB ELEVATION FOR EACH HOUSE LATERAL ON THE GRADE SHEET.
  8. BEFORE WORK CAN BE STARTED, THE CONTRACTOR MUST OBTAIN A PERMIT TO EXCAVATE IN COUNTY STREETS FROM THE L.A. COUNTY ROAD DEPT., DISTRICT OFFICE NO. 5, AND PAY A FEE TO THE COUNTY ENGINEER, 500 S. VERMONT AVE., L.A. 90020, TO COVER THE COST OF CONSTRUCTION INSPECTION AND RECORD PLANS.
  9. IF WORK IS TO BE DONE IN A STATE HIGHWAY, A PERMIT MUST BE OBTAINED FROM THE STATE OF CALIFORNIA, DIVISION OF HIGHWAYS, 130 SOUTH SPRING STREET, LOS ANGELES, CALIFORNIA.
  10. APPROVAL OF THIS PLAN BY THE COUNTY OF LOS ANGELES DOES NOT CONSTITUTE A REPRESENTATION AS TO THE ACCURACY OF THE LOCATION OF OR THE EXISTENCE OR NON-EXISTENCE OF ANY UNDERGROUND UTILITY PIPE, OR STRUCTURE WITHIN THE LIMITS OF THIS PROJECT. THIS NOTE APPLIES TO ALL PAGES.
  11. REFER TO SECTION PAR. 1 OF THE STANDARD SPECIFICATIONS, ENDOUSING SAFETY ORDERS.
  12. PRIOR TO THE ISSUANCE OF THE REQUIRED SEWER CONSTRUCTION PERMIT, THE CONTRACTOR SHALL OBTAIN AND FILE WITH THE COUNTY ENGINEER COPIES OF A PERMIT TO EXCAVATE IN COUNTY STREETS FROM THE LOS ANGELES COUNTY ROAD DEPARTMENT, A PERMIT FOR EXCAVATIONS AND TRENCHES FROM THE STATE OF CALIFORNIA, DIVISION OF INDUSTRIAL SAFETY, AND A CERTIFICATE OF WORKERS' COMPENSATION INSURANCE WITH THE DEPARTMENT OF COUNTY ENGINEER, 500 S. VERMONT AVE., R.M. 406, L.A., CA. 90020, NAMED AS THE CERTIFICATE HOLDER TO BE NOTIFIED 30 DAYS PRIOR TO CANCELLATION OF POLICY.

- CONSTRUCTION NOTES:**
1. WORK SHALL BE CONSTRUCTED ACCORDING TO THE STANDARD SPECIFICATIONS FOR PUBLIC WORKS CONSTRUCTION (1979 EDITION) WITH THE SUPPLEMENTS AND COUNTY ENGINEER SPECIAL PROVISIONS FOR THE CONSTRUCTION OF SANITARY SEWERS DATED SEPT. 21, 1978, AND SHALL BE EXECUTED ONLY IN THE PRESENCE OF THE COUNTY ENGINEER.
  2. THE CONTRACTOR SHALL NOTIFY THE SAN. DIST. DIVISION BY TELEPHONE, (213) 758-2156 AT LEAST TWENTY-FOUR HOURS BEFORE STARTING ANY WORK UNDER THIS CONTRACT.
  3. HOUSE LATERALS TO BE CONSTRUCTED WITH INVERTS AT PROPERTY LINE 6 FEET BELOW CURB GRADE EXCEPT AS NOTED.
  4. WYE OR TEE BRANCHES MAY BE USED FOR CONNECTIONS TO MAINLINE SEWERS EXCEPT AS NOTED.
  5. ALL STRUCTURES SHALL BE EITHER BRICK MANHOLES PER 8-3 OR PRECAST CONCRETE MANHOLES PER 8-3, EXCEPT AS NOTED.
  6. PROVIDE STAKES ON THE PROPERTY LINE OR 4' FEET LINES PRODUCED AT RIGHT ANGLES TO THE SEWER LINE AT THE CENTER LINE OF EACH MANHOLE.
  7. MANHOLE TOPS IN UNIMPROVED RIGHTS OF WAY TO BE SIX INCHES ABOVE FINISHED GRADE.
  8. VITRIFIED CLAY PIPE JOINTS SHALL BE TYPE "B", OR "C" PER STANDARD SPECIFICATIONS SECTION 208-2.
  9. IF A POWER POLE IS WITHIN THREE FEET OF THE SEWER, THE SEWER SHALL BE ENCASED, PER 8-3, CASE II, TWO FEET ON EACH SIDE FROM THE POINT OF INTERFERENCE.
  10. IF DURING THE COURSE OF CONSTRUCTION IT IS DETERMINED THAT THERE IS LESS THAN FOUR FEET OF COVER OVER THE TOP OF A MAIN LINE OR HOUSE LATERAL V.C.P. SEWER WHICH IS NOT PROTECTED ON THE PLANS, THE PIPE SHALL BE ENCASED PER 8-3, CASE II UNLESS OTHERWISE APPROVED BY THE COUNTY ENGINEER.
  11. ALL JOINTS BETWEEN CAST IRON PIPE AND VITRIFIED CLAY PIPE SHALL BE MADE WITH A RUBBER SLEEVE JOINT, TYPE "C" OR "D", WITH BUSHING IF NECESSARY PER STANDARD SPECIFICATIONS, SECTION 208-2.
  12. SEWERS TO BE TESTED FOR LEAKAGE PER SECTION 208-4 OF THE STANDARD SPECIFICATIONS AND SPECIAL PROVISIONS.
  13. RESURFACE ALL TRENCHES WITHIN PAVED AREAS TO MEET L.A. COUNTY ROAD DEPT. OR CALIFORNIA STATE HIGHWAY REQUIREMENTS IN ACCORDANCE WITH PERMITS.
  14. FULL COMPLIANCE WITH SECTION 208-3.05 OF THE SPECIAL PROVISIONS WILL BE REQUIRED FOR BACKFILL IN STREETS. CERTIFICATION OF BACKFILL COMPACTION AND SAND EQUIVALENTS BY A QUALIFIED, REGISTERED TESTING LABORATORY SHALL BE PROVIDED BY THE PERMITTEE PRIOR TO THE ISSUANCE OF A CERTIFICATE OF PARTIAL ACCEPTANCE.
  15. SPECIAL BACKFILL IN EMBEDED CONSTRUCTION (A) BACKFILL TRENCH AND REPLACE OTHER EARTH SO AS TO ACHIEVE THE NATURAL FINISHED GRADES AND SLOPES SHOWN ON THE GRADING PLAN APPROVED FOR THIS DEVELOPMENT BY THE BUILDING & SAFETY DIVISION. (B) ALL BACKFILL AND EARTH REPLACED SHALL BE COMPACTED TO A MINIMUM OF 90% AND A MAXIMUM DENSITY PER A.S.T.M. STD. METHOD OF TEST D958-57 T AS MODIFIED ACCEPTABLE CERTIFICATION OF SUCH COMPACTION SHALL BE SUBMITTED TO THE ENVIRONMENTAL DEVELOPMENT DIVISION.

THE FOLLOWING LATEST REVISED STANDARD PLANS ON FILE IN THE OFFICE OF THE COUNTY ENGINEER SHALL APPLY IN THE CONSTRUCTION OF THIS PROJECT:

LEGEND	
MINIMUM PUBLIC SAFETY REQUIREMENTS	8-1
BRICK MANHOLE	8-3
STANDARD MANHOLE SET	8-7
REQUIRING FOR SEWER PIPE	8-31
CRACKING AND ENCASEMENT	8-33
WYE OR TEE SUPPORT	8-36
ALLOWABLE TRENCH WIDTH	8-39
LOCKED 2' MANHOLE FRAME AND COVER	8-38
NON-REINFORCED PRECAST CONCRETE MANHOLE	8-38

COUNTY OF LOS ANGELES, CALIFORNIA  
 STEPHEN J. KOONCE COUNTY ENGINEER W.E. GARRISON, CHIEF ENGINEER  
 APPROVED *Conell Smith* 7/23/80 APPROVED *Ralph Davis* 7/23/80  
 CHECKED *Ralph Davis* 7/23/80  
 REG. C.E. NO. 16223  
 SANTA CLARITA BLDG. DIST. 82





NO CHARGE FOR CONNECTION

49666

