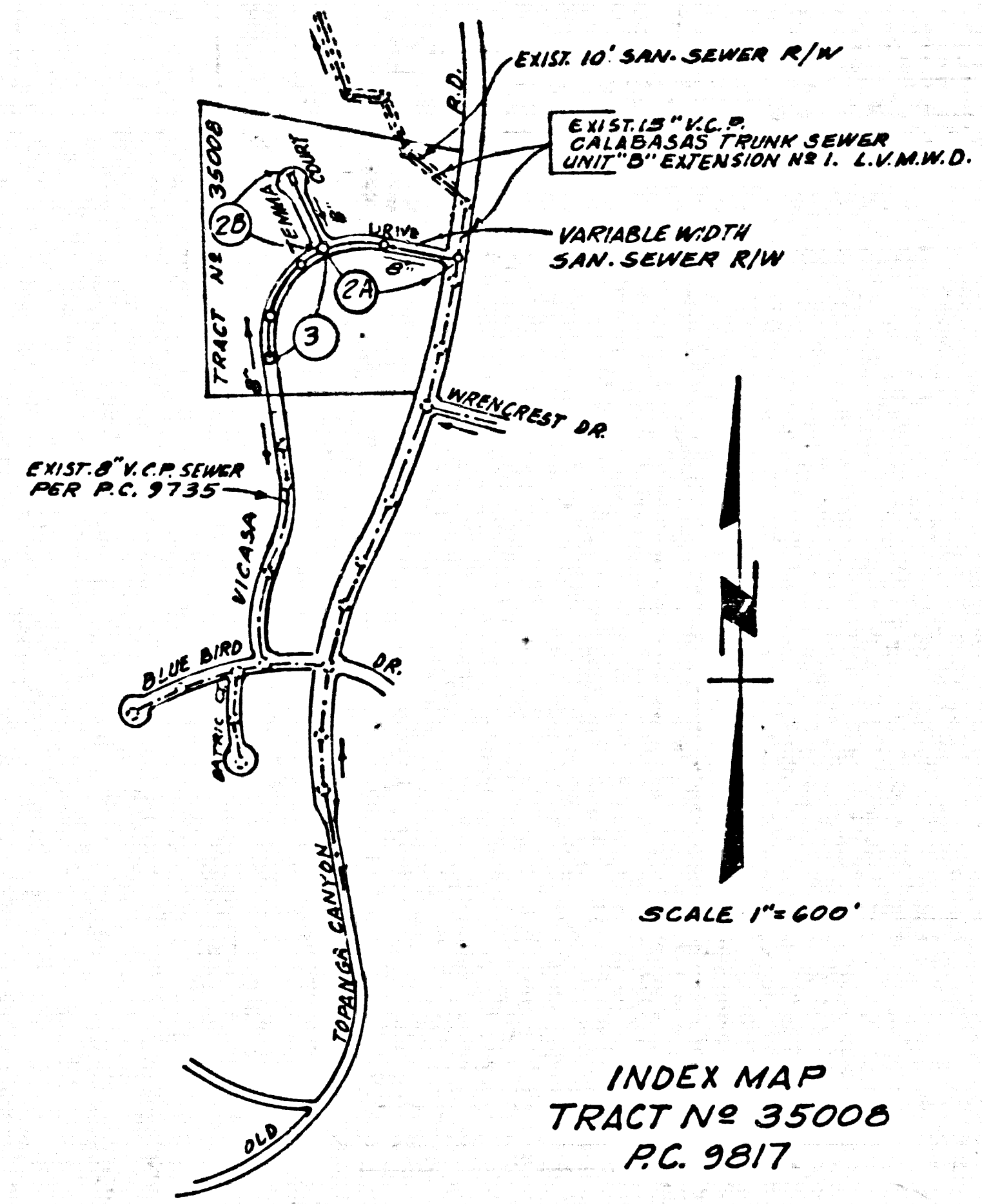


B.M. BY 2031 ELEV. 990.940  
 R.O.B.M. TAG IN CURB 3 FT. N. OF C.R.  
 43 3.532 FT. E. CL. INT. OLD TOPANGA  
 CANYON RD. & WINDCREST DR.  
 MALIBU QUAD. 19 22



**PRIVATE ENGINEERS NOTICE TO CONTRACTORS**

The existence and location of any underground utility pipes or structures shown on these plans are obtained by search of the available records. To the best of our knowledge there are no existing utilities except as shown on these plans. The contractor is required to take due precautionary measures to protect the utility lines shown and any other lines not of record or not shown on these plans.

Registered Engineer R.C.E. 19233  
 REVISION NO. 1 DATE 9/12/80

- ELIMINATED DUTY-FULL TURN EASEMENT IN PAGE 2A BETWEEN STA. 1400.00 & 6183.87 AND REPLACED IT WITH 60' TALL TURN VERTICAL CURVE BY CONSTRUCTING A 14' M. AROUND THE EXIST. TURN IN OLD TOPANGA CANYON RD.
- ELIMINATED M.M. AT STA. 0100 PAGE 2B AND REVERSED FLOW TO VICASA DR BETWEEN STA. 0100 & 1452.93.
- REPLACED PAGE 2C WITH PAGE 2C BETWEEN STA. 0100 & 1452.93 AND RAISED CURB GRADES PLUS PAD ELEV. FOR LOTS 3 & 4 APPROX. 2' AND SEWER GRADES APPROX. 1.5'.
- REPLACED PAGE 3A WITH PAGE 3A BETWEEN STA. 0100 & 1452.93. REPLACED PAGE 3B WITH PAGE 3B BETWEEN STA. 0100 & 1452.93 AND ADDED NEW STA. 6100 WITH V.C. BETWEEN STA. 5100.00 & 6100.00.
- CHANGED STREET NAME FROM MARIUS COURT TO TENMA COURT.

CONSTRUCTION NOTES CONT'D.  
 16. FULL COMPLIANCE WITH PART IX OF THE SPECIAL PROVISIONS IS REQUIRED FOR THE INSTALLATION OF A. B. S. COMPOSITE PIPE.  
 17. MANHOLE WATER STOP Gaskets & CLAMPS ARE REQUIRED FOR THE CONNECTION OF A. B. S. COMPOSITE PIPE TO MANHOLE STRUCTURES.  
 18. A. B. S. SOLID WALL PIPE MUST BE USED FOR WYE & HOUSE LATERAL CONNECTIONS TO A. B. S. COMPOSITE MAINLINE SEWER PIPE.  
 19. A. B. S. COMPOSITE PIPE SHALL BE BEDDED IN CONFORMANCE WITH THE TABLE IN SECTION B-3.1 OF PART IX OF THE SPECIAL PROVISIONS.  
 20. (1910) INDICATES INVERT ELEVATION OF H.L. AT PROPERTY LINE.

**GENERAL NOTES: DOUBLE SCALE**

- ELEVATIONS ARE IN FEET UNLESS OTHERWISE NOTED.
- NO REVISIONS SHALL BE MADE IN THESE PLANS WITHOUT THE APPROVAL OF THE COUNTY ENGINEER.
- NO REPRESENTATIVE OF THE COUNTY ENGINEER WILL SURVEY OR LAY OUT ANY PORTION OF THE WORK.
- GRADES TO WHICH THIS IMPROVEMENT IS TO BE CONSTRUCTED ARE SHOWN ON PLANS AND CURVES. GRADE POINTS FOR TOP OF CURBS, CENTER LINE OF DRIVE, OR CENTER LINE OF ALLEYS ARE SHOWN BY CIRCLES ON PROFILES AT ALL POINTS BETWEEN BEING. HATCH POINTS THE GRADE SHALL BE ESTABLISHED SO AS TO CONFORM TO A STRAIGHT LINE DRAWN BETWEEN SAID DESIGNATED POINTS.
- THE PRIVATE ENGINEER SHALL FURNISH THE COUNTY ENGINEER WITH GRADE SHEETS AND STATIONING FOR ALL HOUSE LATERALS AND 12" OR 18" BRANCHES AND SHALL PROVIDE STAKES FOR THEM AT THEIR PROPER LOCATIONS WITH STATIONING PLAINLY MARKED. ALL HOUSE LATERALS SHALL BE CONSTRUCTED IN A STRAIGHT ALIGNMENT AT RIGHT ANGLES FROM THE MAIN LINE SEWER EXCEPT AS SHOWN ON THE PLANS. HOUSE LATERALS FROM CHIMNEYS SHALL NOT HAVE AN ANGLE OF LESS THAN 45° WITH THE MAIN LINE SEWER. ANY CHANGE IN ALIGNMENT SHALL BE REQUESTED BY WRITING BY THE PRIVATE ENGINEER.
- THE PRIVATE ENGINEER SHALL FURNISH THE HOUSE LATERAL DEPTH AT THE PROPERTY LINE BELOW THE TOP OF CURB ELEVATION FOR EACH HOUSE LATERAL ON THE GRADE SHEET.
- BEFORE WORK CAN BE STARTED, THE CONTRACTOR MUST OBTAIN A PERMIT TO EXCAVATE IN COUNTY STREETS FROM THE L.A. COUNTY ROAD DEPT., DISTRICT OFFICE NO. 6, AND PAY A FEE TO THE COUNTY ENGINEER, 800 S. VINE ST., LOS ANGELES, CALIF. 90012.
- IF WORK IS TO BE DONE IN A STATE HIGHWAY, A PERMIT MUST BE OBTAINED FROM THE STATE OF CALIFORNIA, DIVISION OF HIGHWAY, 120 SOUTH SPRING STREET, LOS ANGELES, CALIFORNIA.
- APPROVAL OF THIS PLAN BY THE COUNTY OF LOS ANGELES DOES NOT CONSTITUTE A REPRESENTATION AS TO THE ACCURACY OF THE LOCATION OF OR THE EXISTENCE OR NON-EXISTENCE OF ANY UNDERGROUND UTILITY PIPE, OR STRUCTURE WITHIN THE LIMITS OF THIS PROJECT. THIS NOTE APPLIES TO ALL PAGES.
- REFER TO SECTION 114-61 OF THE STANDARD SPECIFICATIONS, REGARDING SAFETY CONES.
- BEFORE TO THE ISSUANCE OF THE REQUIRED SEWER CONSTRUCTION PERMIT, THE CONTRACTOR SHALL OBTAIN AND FILE WITH THE COUNTY ENGINEER COPIES OF A PERMIT TO EXCAVATE IN COUNTY STREETS FROM THE LOS ANGELES COUNTY ROAD DEPARTMENT, A PERMIT FOR EXCAVATIONS AND TRENCHES FROM THE STATE OF CALIFORNIA, DIVISION OF INDUSTRIAL SAFETY AND A CERTIFICATE OF WORKERS' COMPENSATION INSURANCE WITH THE DEPARTMENT OF COUNTY ENGINEER, 350 S. WINDMILL AVE., LOS ANGELES, CALIFORNIA 90020, ROOM 500, NAMED AS THE CONTRACTOR HEREIN TO BE NOTIFIED 30 DAYS PRIOR TO CANCELLATION OF POLICY.

**CONSTRUCTION NOTES:**

- WORK SHALL BE CONSTRUCTED ACCORDING TO THE STANDARD SPECIFICATIONS FOR PUBLIC WORKS CONSTRUCTION (1978 EDITION) AND COUNTY ENGINEER SPECIAL PROVISIONS FOR THE CONSTRUCTION OF SANITARY SEWERS DATED 4/27/80, 5/17/80 AND SHALL BE PROSECUTED ONLY IN THE PRESENCE OF THE COUNTY ENGINEER.
- THE CONTRACTOR SHALL NOTIFY THE ENVIRONMENTAL DEVELOPMENT DIVISION PER CITY 738-2186, AT LEAST TWENTY-FOUR HOURS BEFORE STARTING ANY WORK UNDER THE CONTRACT.
- HOUSE LATERALS TO BE CONSTRUCTED WITH INVERTS AT PROPERTY LINE 6 FEET BELOW CURB GRADE EXCEPT AS NOTED.
- WYE OR BRANCHES MAY BE USED FOR CONNECTIONS TO MAINLINE SEWERS EXCEPT AS NOTED.
- ALL STRUCTURES SHALL BE 18" R.C.P. OR PRECAST CONCRETE MANHOLES PER A.B.S.P.
- PROFILES SHOWN ON THE PROPERTY LINE OR PROPERTY LINES PRODUCED AT RIGHT ANGLES TO THE SEWER LINE AT THE CENTER LINE OF EACH MANHOLE.
- MANHOLE TOPS IN UNIMPROVED RIGHTS OF WAY TO BE 6" ABOVE FINISHED GRADE.
- VITRIFIED CLAY PIPE JOINTS SHALL BE TYPE "W", "P", OR "T" PER STANDARD SPECIFICATIONS SECTION 206-2.
- IF A POWER POLE IS WITHIN THREE FEET OF THE SEWER, THE SEWER SHALL BE ENCASED PER 5-23, CASE II, TWO FEET ON EACH SIDE FROM THE POINT OF INTERFERENCE.
- IF DURING THE COURSE OF CONSTRUCTION IT IS DETERMINED THAT THERE IS LESS THAN FOUR FEET OF COVER OVER THE TOP OF A MAIN LINE OR HOUSE LATERAL V.C.P. SEWER WHICH IS NOT INDICATED ON THE PLANS, THE PIPE SHALL BE ENCASED PER 5-23, CASE II UNLESS OTHERWISE APPROVED BY THE COUNTY ENGINEER.
- ALL JOINTS BETWEEN CAST IRON PIPE AND VITRIFIED CLAY PIPE SHALL BE MADE WITH A RUBBER GASKET JOINT, TYPE "C" OR "W".
- WITH RESPECT TO THE NECESSARY AND NECESSARY TO BE MAINTAINED IN THE SEWER LINE, APPROVED BY THE COUNTY ENGINEER.
- THE CONTRACTOR SHALL BE RESPONSIBLE FOR THE PROTECTION OF ALL EXISTING UTILITIES AND SPECIAL PROVISIONS.
- REINFORCE ALL TRENCHES WITHIN PAVED AREAS TO MEET L.A. COUNTY ROAD DEPT. OR CALIFORNIA STATE HIGHWAY REQUIREMENTS IN ACCORDANCE WITH PERMITS.
- FULL COMPLIANCE WITH SECTION 206-1.1, 206-1.2, 206-1.3, 206-1.4, 206-1.5, 206-1.6, 206-1.7, 206-1.8, 206-1.9, 206-1.10, 206-1.11, 206-1.12, 206-1.13, 206-1.14, 206-1.15, 206-1.16, 206-1.17, 206-1.18, 206-1.19, 206-1.20, 206-1.21, 206-1.22, 206-1.23, 206-1.24, 206-1.25, 206-1.26, 206-1.27, 206-1.28, 206-1.29, 206-1.30, 206-1.31, 206-1.32, 206-1.33, 206-1.34, 206-1.35, 206-1.36, 206-1.37, 206-1.38, 206-1.39, 206-1.40, 206-1.41, 206-1.42, 206-1.43, 206-1.44, 206-1.45, 206-1.46, 206-1.47, 206-1.48, 206-1.49, 206-1.50, 206-1.51, 206-1.52, 206-1.53, 206-1.54, 206-1.55, 206-1.56, 206-1.57, 206-1.58, 206-1.59, 206-1.60, 206-1.61, 206-1.62, 206-1.63, 206-1.64, 206-1.65, 206-1.66, 206-1.67, 206-1.68, 206-1.69, 206-1.70, 206-1.71, 206-1.72, 206-1.73, 206-1.74, 206-1.75, 206-1.76, 206-1.77, 206-1.78, 206-1.79, 206-1.80, 206-1.81, 206-1.82, 206-1.83, 206-1.84, 206-1.85, 206-1.86, 206-1.87, 206-1.88, 206-1.89, 206-1.90, 206-1.91, 206-1.92, 206-1.93, 206-1.94, 206-1.95, 206-1.96, 206-1.97, 206-1.98, 206-1.99, 206-2.00.

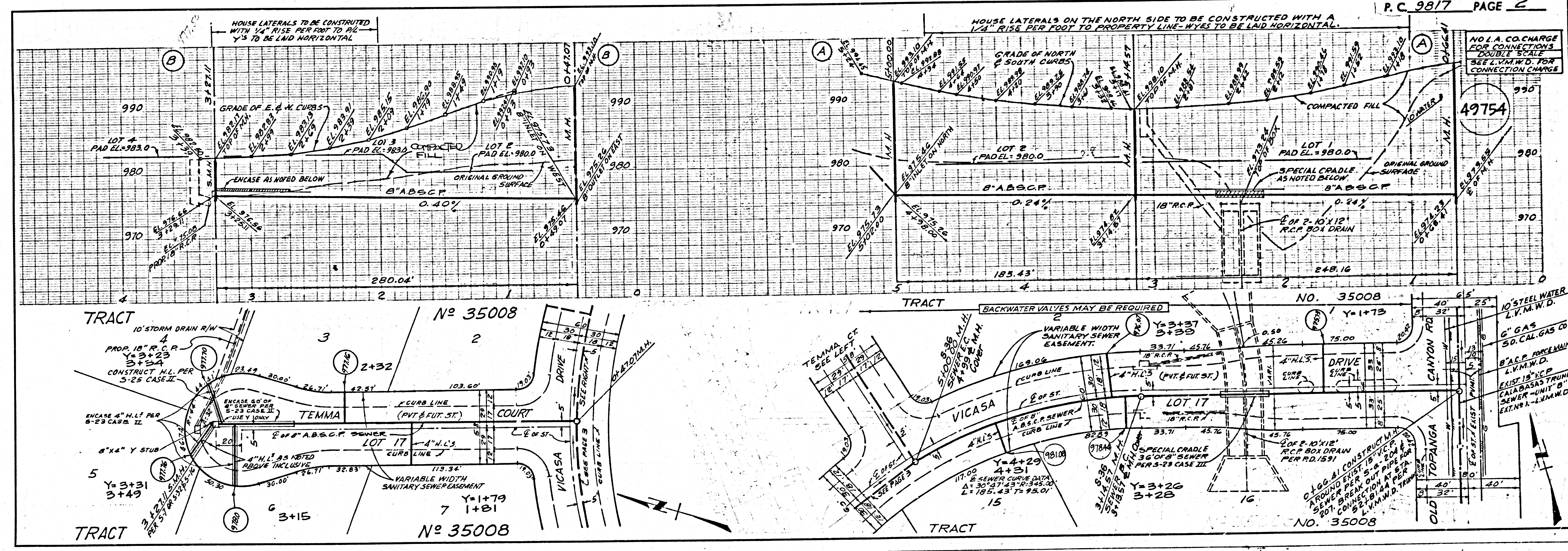
TO BE CONSTRUCTED IN  
**TRACT NO. 35008**  
 PRIVATE CONTRACT NO. 9817

W.S. 60-L-4  
 2 SHEETS, 3 PAGES (49753)  
 SCALE: VERT. 1" = 4' NOVEMBER, 1979  
 HORIZ. 1" = 40'  
 PREPARED IN THE OFFICES OF  
 LIND & HULLING, INC.  
 206 S. HUNTINGTON DR.  
 SAN MARINO, CA. 91766  
 BY: J.H.L. REGISTERED ENGINEER R.C.E. NO. 19233

THE FOLLOWING LATEST REVISED STANDARD PLANS ON FILE IN THE OFFICE OF THE COUNTY ENGINEER SHALL APPLY IN THE CONSTRUCTION OF THIS PROJECT:

LEAD-40	5-1
MINIMUM PUBLIC SAFETY REQUIREMENTS	5-2
BACK MANHOLE	5-3
STANDARD MANHOLE STEP	5-4
RECORDING FOR SEWER PIPE	5-5
WARNING AND ENCASUREMENT	5-6
W/C ON THE SUPPORT	5-7
ALUMINUM TRENCH W/STAKE	5-8
LOCKING MANHOLE FRAME AND COVER	5-9
NON-REINFORCED PRECAST CONCRETE MANHOLE	5-10
RECTANGULAR SHALLOW MANHOLE	5-11
RECTANGULAR MANHOLE FRAME & COVER	5-12
GROUND FOR A.B.S. PVC SEWER PIPE	5-13
SPECIAL HOUSE LATERALS	5-14
PRECAST CONCRETE SHALLOW MANHOLE	5-15

COUNTY OF LOS ANGELES, CALIFORNIA  
 STEPHEN J. KOONCE COUNTY ENGINEER LAS VIRGENES MUNICIPAL WATER DIVISION  
 APPROVED: [Signature] DATE 8/15/80  
 CHECKED: [Signature] DATE 8/15/80  
 REG. C.E. NO. 16193  
 CALABASAS BIDG. DIST. 9.1



1182 29 80023:01M T12ART

