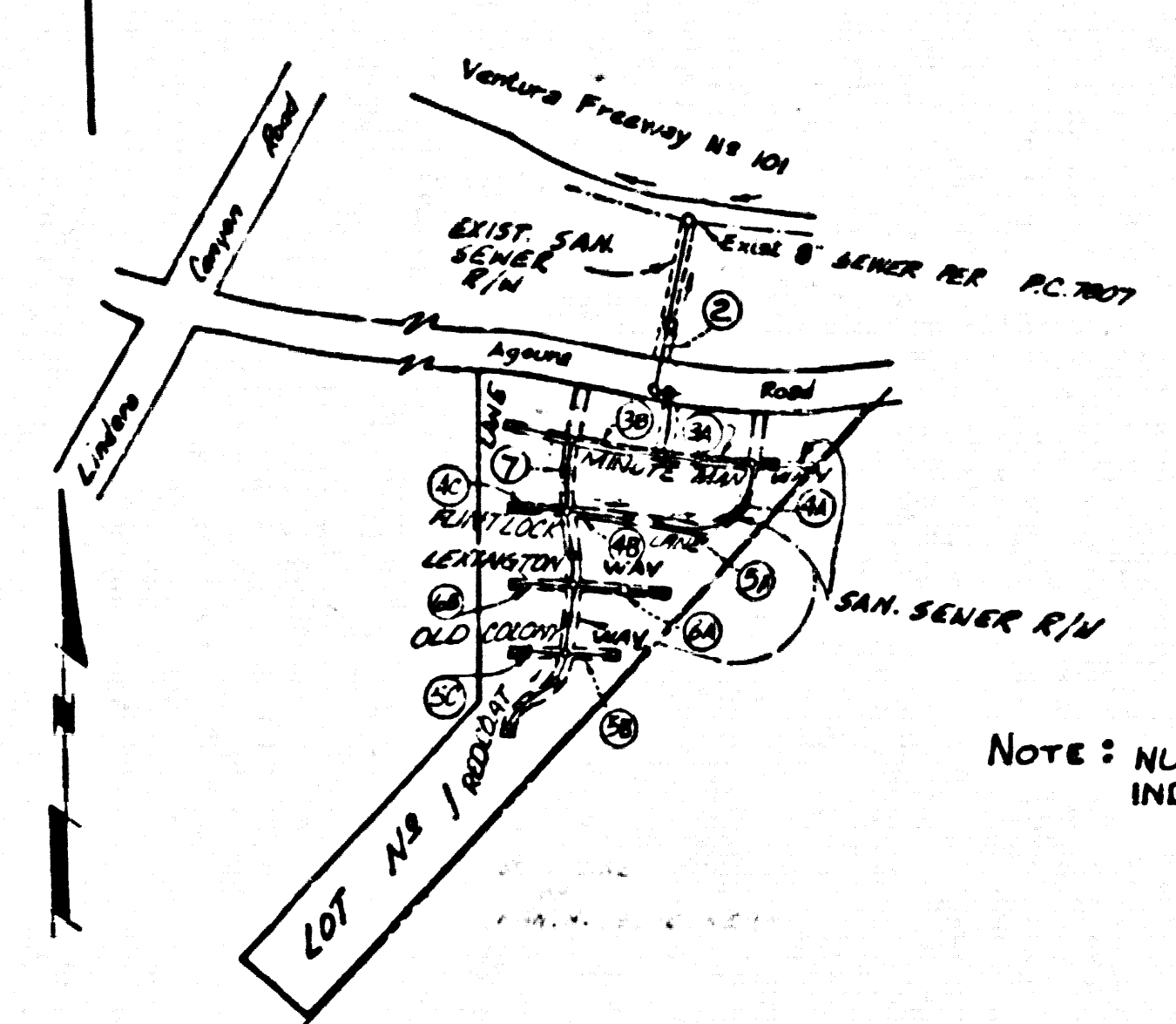


B.M. BY 7555 ELEV. 920.271
 RDBM TAG NW COR BRIDGE #1607
 OVER FLOOD CONTROL CHANNEL 55'
 NORTH 100' EAST OF INT AGOURA RD.
 & LINDERO CANYON ROAD
 MALIBU QUAD. 19 BQ.



INDEX MAP
 SCALE: 1"=600'
 PC. 9819
 TRACT 35034

NOTE: NUMBERS IN CIRCLES
 INDICATE PAGE NUMBERS

DOUBLE SCALE

REVISION NO. 1 DATE 2/18/80
 REVISION: LOWER MAIN LINE SEWER
 ON SHEET 2 FROM STATION 1082.00
 TO STATION 5171.45 INCLUDING
 CRADLE & NOTES.
 APPROVED: *Paula E. H. [Signature]* 25559
 OFFICE OF COUNTY ENGINEER / R.E. NO.

REVISION NO. 2 DATE 5/1/81
 REVISION: Realignment of Main Line Sewer &
 Use of 10" V.C.P. Pipe 2' Use A.B.S. From M.H.
 at Sta. 6+26 South to Tract Except Page 7 South
 of Sta. 5+79.80; Add Wye to M.H. at Sta. 4+79.96
 Page 5A; Note Concerning Laterals for Units
 55, 56, 57 & 58 on Page 6A; Realignment of
 Storm Drain on Redwood Lane North of Lexington
 Way to East on Lexington Way; All Wye to M.H. at Sta.
 6+57.2 Page 7;
 APPROVED: *Walter D. [Signature]* 5/4/81 16883
 OFFICE OF COUNTY ENGINEER / R.E. NO.

15. SPECIAL BACKFILL IN EASEMENT CONSTRUCTION

- A. BACKFILL TRENCH AND REPLACE OTHER EXISTING SOILS TO
 ACHIEVE THE NATURAL OR FINISHED GRADES AND SLOPES
 SHOWN ON THE GRADING PLAN APPROVED FOR THIS
 DEVELOPMENT BY THE BUILDING AND SAFETY DIVISION.
- B. ALL BACKFILL AND EARTH RELACED SHALL BE COMPACTED
 TO A MINIMUM OF 90% OF MAXIMUM DENSITY PER
 A.S.T.M. STANDARD METHOD OF TEST D698-57T AS
 MODIFIED. ACCEPTABLE CERTIFICATION OF SUCH
 COMPACTION SHALL BE SUBMITTED TO THE
 ENVIRONMENTAL DEVELOPMENT DIVISION.

- GENERAL NOTES:
1. ELEVATIONS ARE IN FEET ABOVE U.S.C. & G.S. SEA LEVEL DATUM OF 1929.
 2. NO BYPASSING SHALL BE MADE IN THESE PLANS WITHOUT THE APPROVAL OF THE COUNTY ENGINEER.
 3. NO REPRESENTATIVE OF THE COUNTY ENGINEER WILL SURVEY OR LAY OUT ANY PORTION OF THE WORK.
 4. GRADES TO WHICH THIS IMPROVEMENT IS TO BE CONSTRUCTED ARE SHOWN ON PLANS AND PROFILES. GRADE POINTS FOR TOP OF CURB, CENTER LINE OF ALLEYS, OR CENTER LINE OF ALLEYS ARE SHOWN BY CIRCLES ON PROFILES. AT ALL POINTS BETWEEN DESIGNATED POINTS THE GRADE SHALL BE ESTABLISHED SO AS TO CONFORM TO A STRAIGHT LINE DRAWN BETWEEN SAID DESIGNATED POINTS.
 5. THE PRIVATE ENGINEER SHALL FURNISH THE COUNTY ENGINEER WITH GRADE SHEETS AND STATIONING FOR ALL HOUSE LATERALS AND 12" OR 16" BRANCHES AND SHALL PROVIDE EASES FOR THEM AT THEIR PROPER LOCATIONS WITH STATIONING PLAINLY MARKED. ALL HOUSE LATERALS SHALL BE CONSTRUCTED IN A STRAIGHT ALIGNMENT AT RIGHT ANGLES FROM THE MAIN LINE SEWER EXCEPT AS SHOWN ON THE PLANS. HOUSE LATERALS FROM CHIMNEYS SHALL NOT HAVE AN ANGLE OF LESS THAN 45° WITH THE MAIN LINE SEWER. ANY CHANGE IN ALIGNMENT SHALL BE COVERED IN WRITING BY THE PRIVATE ENGINEER.
 6. THE PRIVATE ENGINEER SHALL FURNISH THE COUNTY ENGINEER WITH THE HOUSE LATERAL DEPTH AT THE PROPERTY LINE BELOW THE TOP OF CURB ELEVATION FOR EACH HOUSE LATERAL ON THE GRADE SHEET.
 7. BEFORE WORK CAN BE STARTED, THE CONTRACTOR MUST OBTAIN A PERMIT TO EXCAVATE IN COUNTY STREETS FROM THE L.A. COUNTY ROAD DEPT., DISTRICT OFFICE NO. 5, AND PAY A FEE TO THE COUNTY ENGINEER, 850 S. VERMONT AVE., RM 800, 629 SHERBORN, TO COVER THE COST OF CONSTRUCTION INSPECTION AND RECORD PLANS.
 8. IF WORK IS TO BE DONE IN A STATE HIGHWAY, A PERMIT MUST BE OBTAINED FROM THE STATE OF CALIFORNIA, DIVISION OF HIGHWAYS, 126 SOUTH SPRING STREET, LOS ANGELES, CALIFORNIA.
 9. APPROVAL OF THIS PLAN BY THE COUNTY OF LOS ANGELES DOES NOT CONSTITUTE A REPRESENTATION AS TO THE ACCURACY OF THE LOCATION OF OR THE EXISTENCE OR NON-EXISTENCE OF ANY UNDERGROUND UTILITY PIPE OR STRUCTURE WITHIN THE LIMITS OF THIS PROJECT. THIS NOTE APPLIES TO ALL PAGES.
 10. REFER TO SECTION 7-10.6.1 OF THE STANDARD SPECIFICATIONS, ENGINEERING SAFETY DIVISION.
 11. PRIOR TO THE START OF THE REQUIRED SEWER CONSTRUCTION PERMIT THE CONTRACTOR SHALL OBTAIN AND FILE WITH THE COUNTY ENGINEER'S OFFICE A COPY OF THE STANDARD SPECIFICATIONS AND THE LOCAL ORDINANCES OF THE COUNTY OF LOS ANGELES WHICH RELATE TO SEWER CONSTRUCTION. THE CONTRACTOR SHALL BE RESPONSIBLE FOR OBTAINING AND PAYING FOR THE NECESSARY INSURANCE AND LIABILITY COVERAGE OF ADEQUATE COMPENSATION INSURANCE WITH THE COUNTY ENGINEER'S OFFICE. THE CONTRACTOR SHALL BE NOTIFIED 30 DAYS PRIOR TO CANCELLATION OF POLICY.

- CONSTRUCTION NOTES:
1. WORK SHALL BE CONSTRUCTED ACCORDING TO THE STANDARD SPECIFICATIONS FOR PUBLIC WORKS CONSTRUCTION 1979 EDITION WITH THE SUPPLEMENT AND COUNTY ENGINEER'S SPECIAL PROVISIONS FOR THE CONSTRUCTION OF SANITARY SEWER SYSTEMS - 1979, 1978, 1976, AND SHALL BE PROSECUTED ONLY IN THE PRESENCE OF THE COUNTY ENGINEER.
 2. THE CONTRACTOR SHALL NOTIFY THE ENVIRONMENTAL DEVELOPMENT DIVISION (EDD) AT LEAST TWENTY-FOUR HOURS BEFORE STARTING ANY WORK UNDER THIS CONTRACT.
 3. HOUSE LATERALS TO BE CONSTRUCTED WITH INVERTS AT PROJECT LINE & FRESH BLOW CURB GRADE EXCEPT AS NOTED.
 4. WYE ON THE BRANCHES MAY BE USED FOR CONNECTIONS TO MAINLINE SEWERS EXCEPT AS NOTED.
 5. ALL STRUCTURES SHALL BE EITHER BRICK MANHOLES PER 5-3 OR PRECAST CONCRETE MANHOLES PER 5-26, EXCEPT AS NOTED.
 6. PROVIDE STAIRS ON THE PROPERTY LINE OR PROPERTY LINES PRODUCED AT RIGHT ANGLES TO THE SEWER LINE AT THE CENTER LINE OF EACH MANHOLE.
 7. MANHOLE TOPS IN UNIMPROVED RIGHTS OF WAY TO BE 18" MIN. ABOVE FINISHED GRADE.
 8. VITRIFIED CLAY PIPE JOINTS SHALL BE TYPE "B", OR "C" PER STANDARD SPECIFICATIONS SECTION 200-2.
 9. IF A POWER POLE IS WITHIN THREE FEET OF THE SEWER, THE SEWER SHALL BE ENCASED, PER 5-25, CASE B, TWO FEET ON EACH SIDE FROM THE POINT OF INTERFERENCE.
 10. IF DURING THE COURSE OF CONSTRUCTION IT IS DETERMINED THAT THERE IS LESS THAN FOUR FEET OF COVER OVER THE TOP OF A MAIN LINE OR HOUSE LATERAL V.C.P. SEWER WHICH IS NOT INDICATED ON THE PLANS, THE PIPE SHALL BE ENCASED PER 5-25, CASE B UNLESS OTHERWISE APPROVED BY THE COUNTY ENGINEER.
 11. ALL JOINTS BETWEEN CAST IRON PIPE AND VITRIFIED CLAY PIPE SHALL BE MADE WITH A RUBBER SLEEVE JOINT, TYPE "C" OR "D", WITH SEALING IF NECESSARY PER STANDARD SPECIFICATIONS, SECTION 200-3.
 12. SEWERS TO BE TESTED FOR LEAKAGE PER SECTION 200-4 OF THE STANDARD SPECIFICATIONS AND SPECIAL PROVISIONS.
 13. REPAIRS ALL TRENCHES WITHIN FIVE FEET OF A QUALIFIED, REGISTERED TESTING LABORATORY SHALL BE PROVIDED BY THE PERMITTEE PRIOR TO THE RESUMPTION OF A CERTIFICATE OF PARTIAL ACCEPTANCE.
 14. FULL COMPLIANCE WITH SECTION 200-4.5 OF THE SPECIAL PROVISIONS WILL BE REQUIRED FOR BACKFILL IN STREETS. CERTIFICATION OF BACKFILL COMPACTION AND SOIL REQUIREMENTS OF A QUALIFIED, REGISTERED TESTING LABORATORY SHALL BE PROVIDED BY THE PERMITTEE PRIOR TO THE RESUMPTION OF A CERTIFICATE OF PARTIAL ACCEPTANCE.

PROFILE, ALIGNMENT AND GRADE OF
SANITARY SEWERS PAGE 1

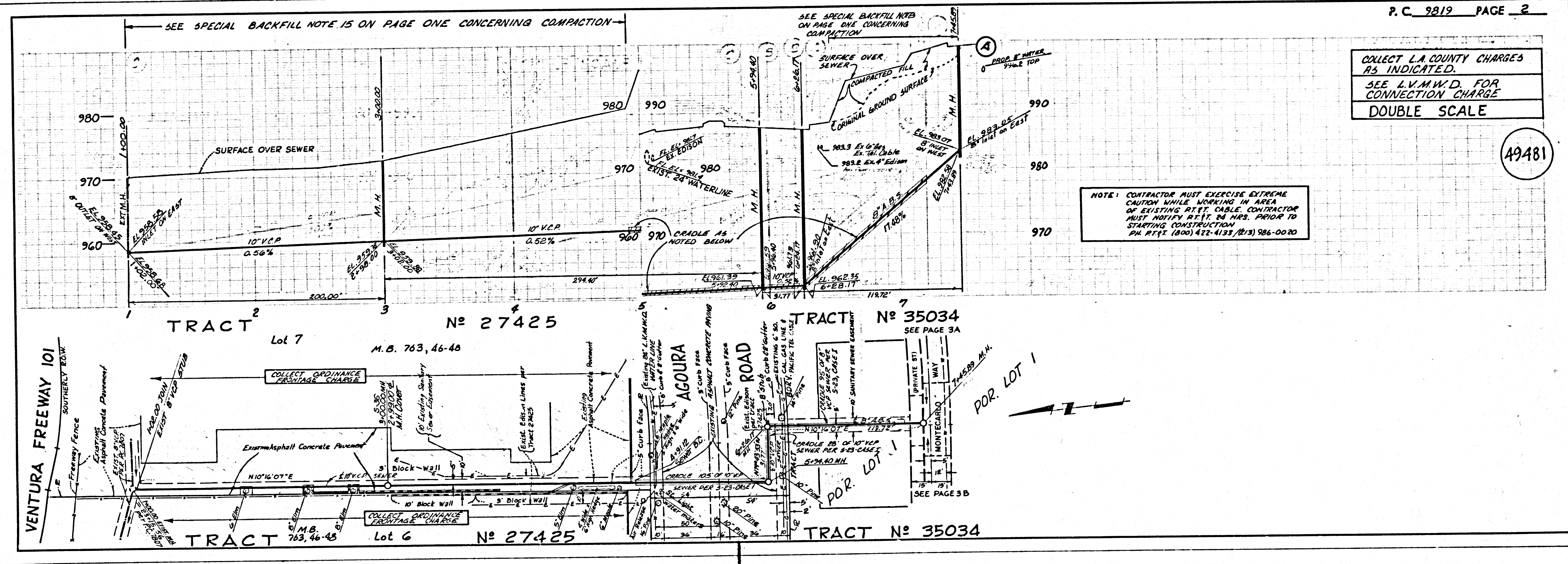
TO BE CONSTRUCTED IN
 TRACT No 35034
 PRIVATE CONTRACT NO. 9819

W.S. 93-D-2
 4 SHEETS, 7 PAGES (49480)
 SCALE: VERT. 1"=4' HORIZ. 1"=40'
 JANUARY, 1980
 PREPARED IN THE OFFICES OF
 C.C.P.R. INC.
 2900 TOWNSCAPE ROAD #209
 WEST LAKE VILLAGE, CA. 91361
 BY: *[Signature]*
 REG. C.E. No. 14891

THE FOLLOWING LATEST REVISED STANDARD PLANS ON FILE IN THE OFFICE OF THE COUNTY ENGINEER SHALL APPLY IN THE CONSTRUCTION OF THIS PROJECT:

SEWER	5-1
MINIMUM PUBLIC SAFETY REQUIREMENTS	5-2
BRICK MANHOLE	5-3
STANDARD MANHOLE STOP	5-7
BRICKING FOR SEWER PIPE	5-8
CHIMNEY AND ENCASING	5-9
WYE ON THE SUPPORT	5-10
ALLOWABLE TRENCH WIDTHS	5-11
SUCCESSIVE MANHOLE PIPES AND COVERS	5-12
NON-ENCASED PRECAST CONCRETE MANHOLE	5-13

COUNTY OF LOS ANGELES, CALIFORNIA
 STEPHEN J. KOONCE, COUNTY ENGINEER LAS VIRGENES MUNICIPAL WATER DISTRICT
 APPROVED: *[Signature]* DATE 12/18/80
 APPROVED: *[Signature]* DATE 12/18/80
 GENERAL MANAGER & CHIEF ENGINEER
 CHECKED: *[Signature]* DATE 12/18/80
 REG. C.E. NO. 16773
 CALABASAS RDG. DIST. 2/1

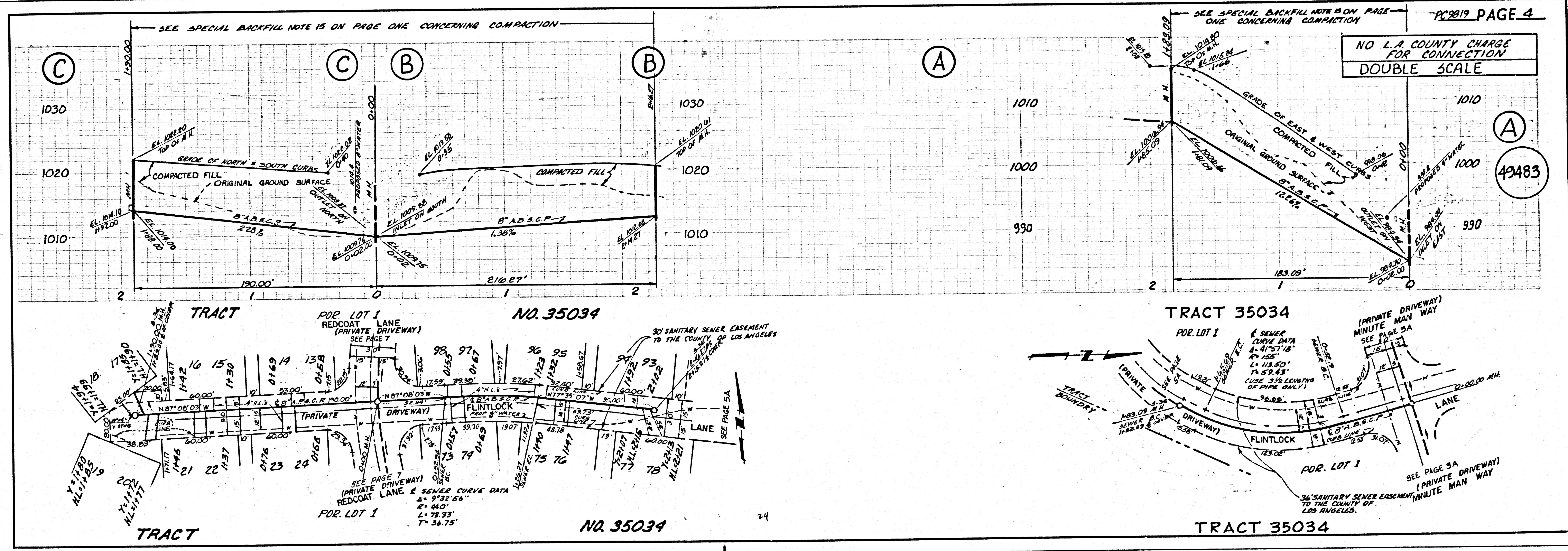
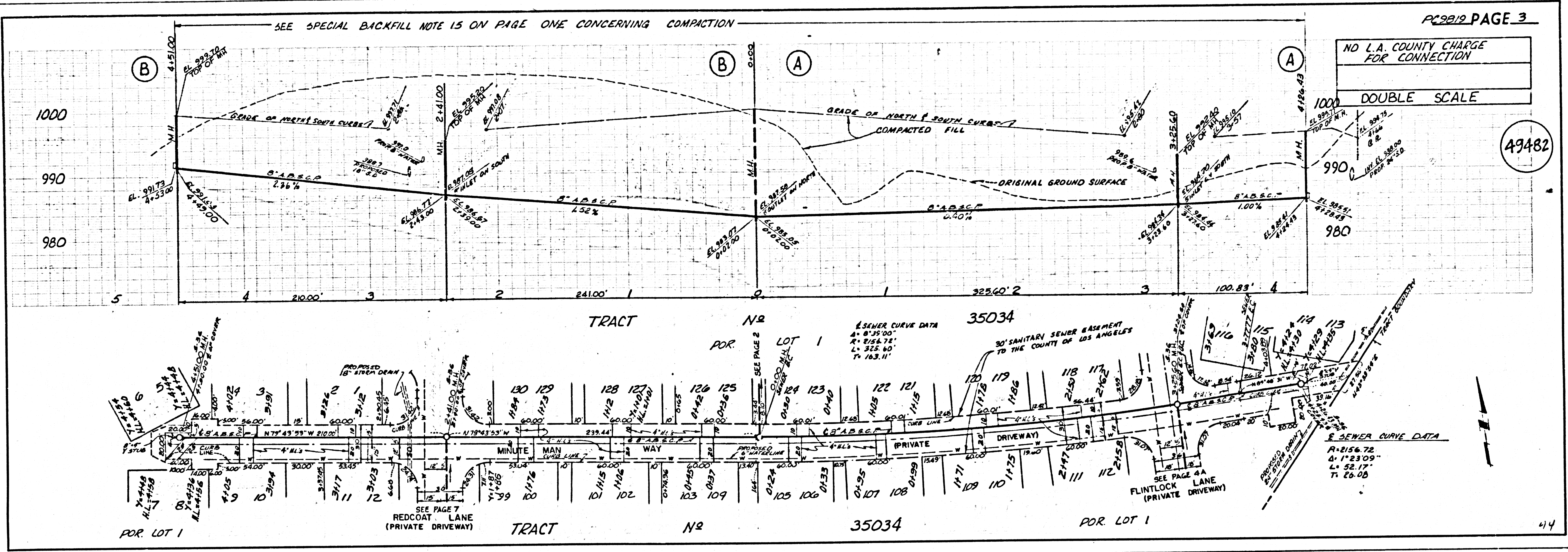


COLLECT L.A. COUNTY CHARGES
 AS INDICATED.
 SEE L.V.M.W.D. FOR
 CONNECTION CHARGE
 DOUBLE SCALE

NOTE: CONTRACTOR MUST EXERCISE EXTREME
 CAUTION WHILE WORKING IN AREA
 OF EXISTING AT&T CABLE. CONTRACTOR
 MUST NOTIFY AT&T 24 HRS. PRIOR TO
 STARTING CONSTRUCTION
 PH. RT. 1 (800) 422-4133 / (213) 986-0020

P. C. 9819 PAGE 2

SH 16"



S 2182 29 2502E ON T 2384T

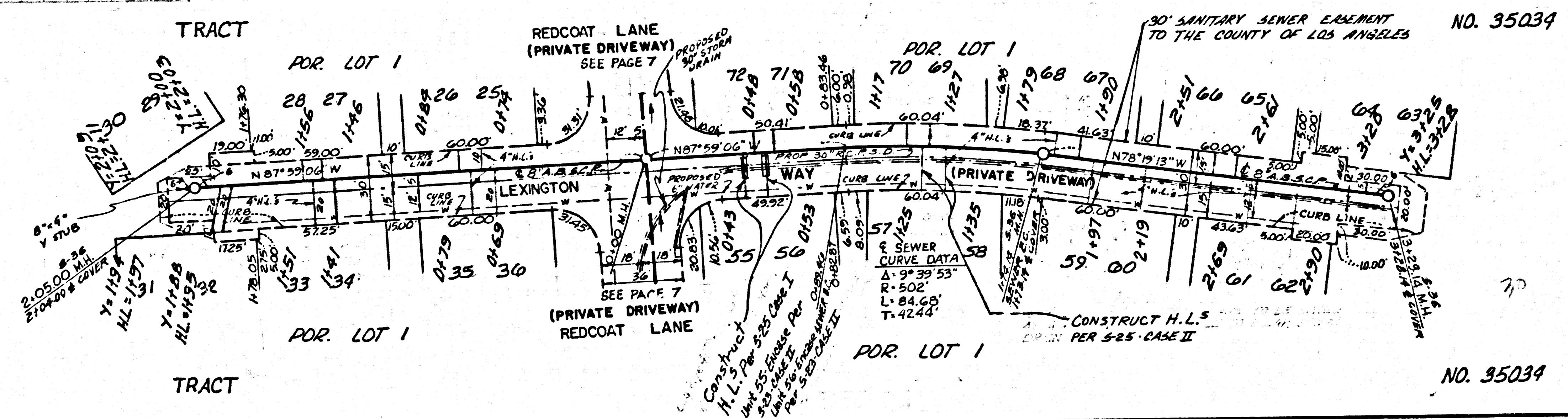
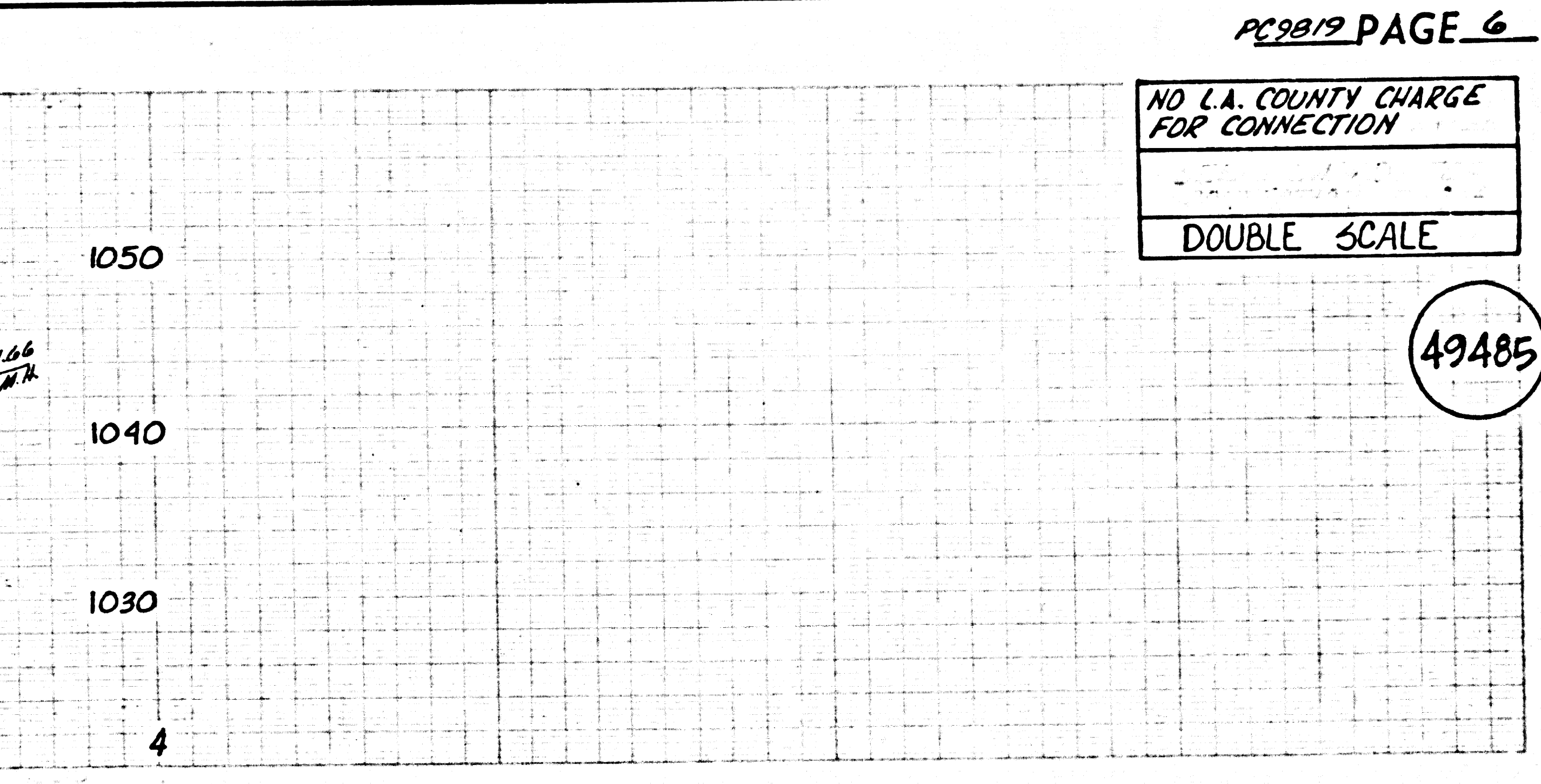
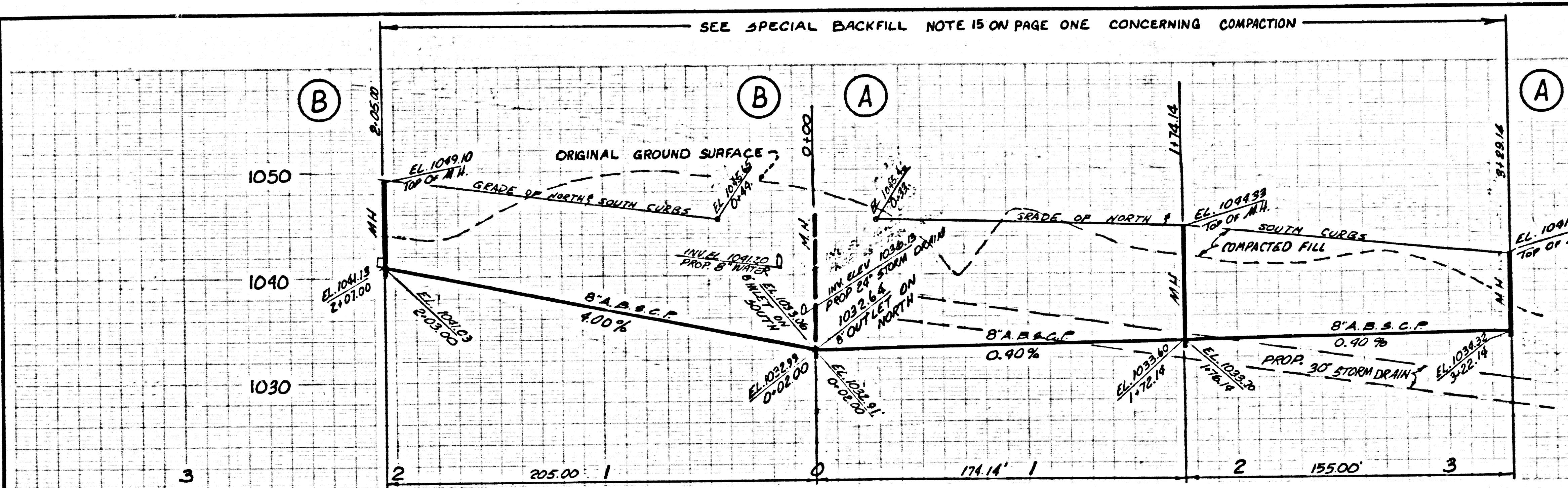
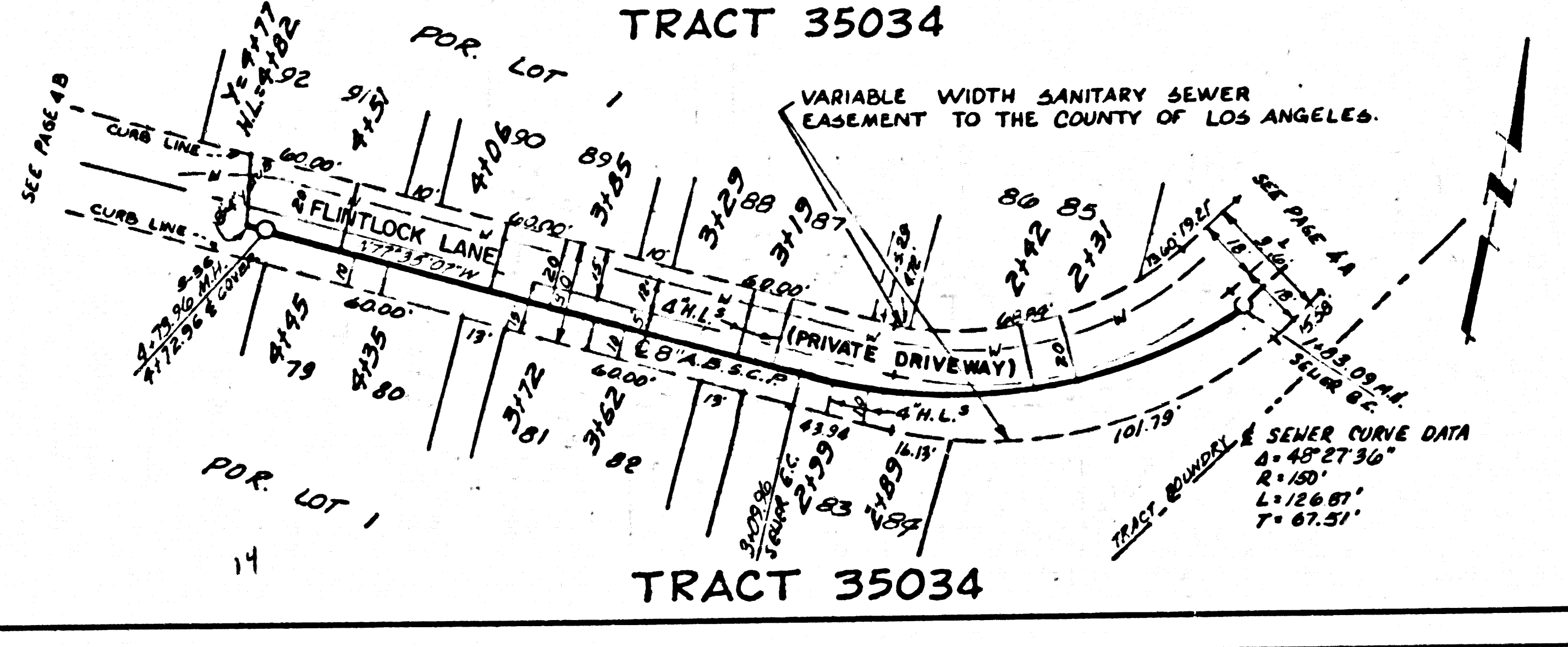
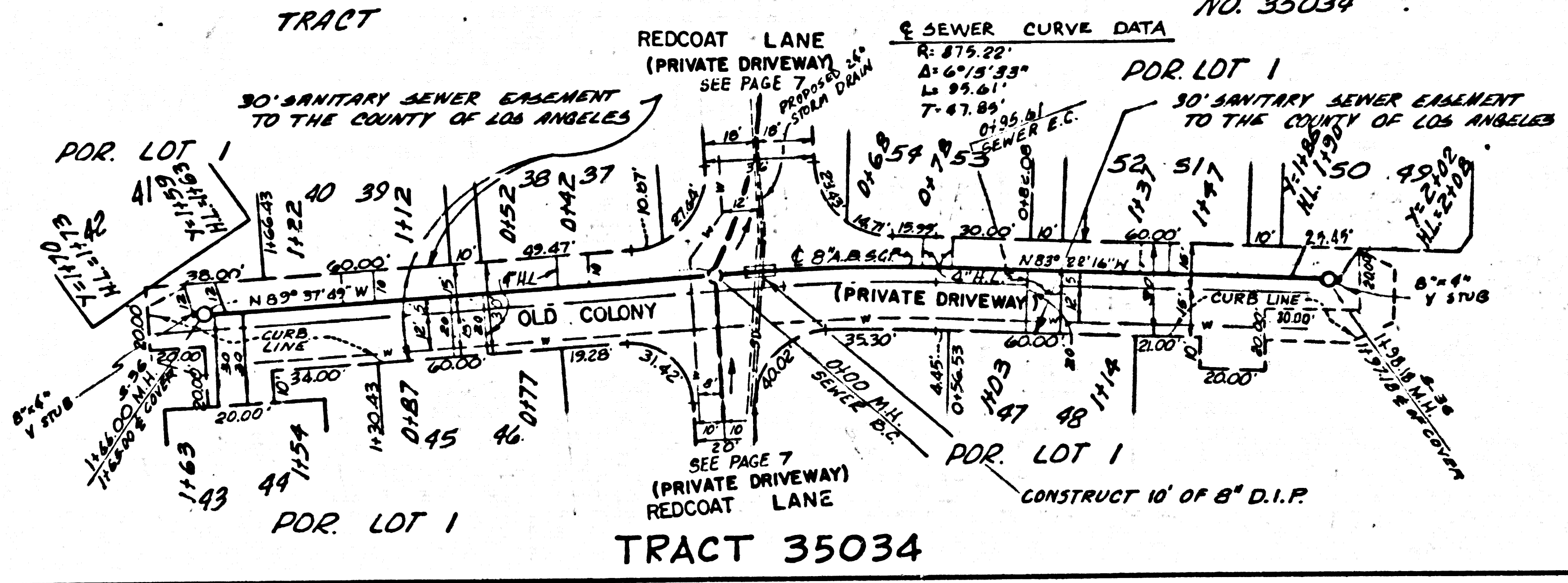
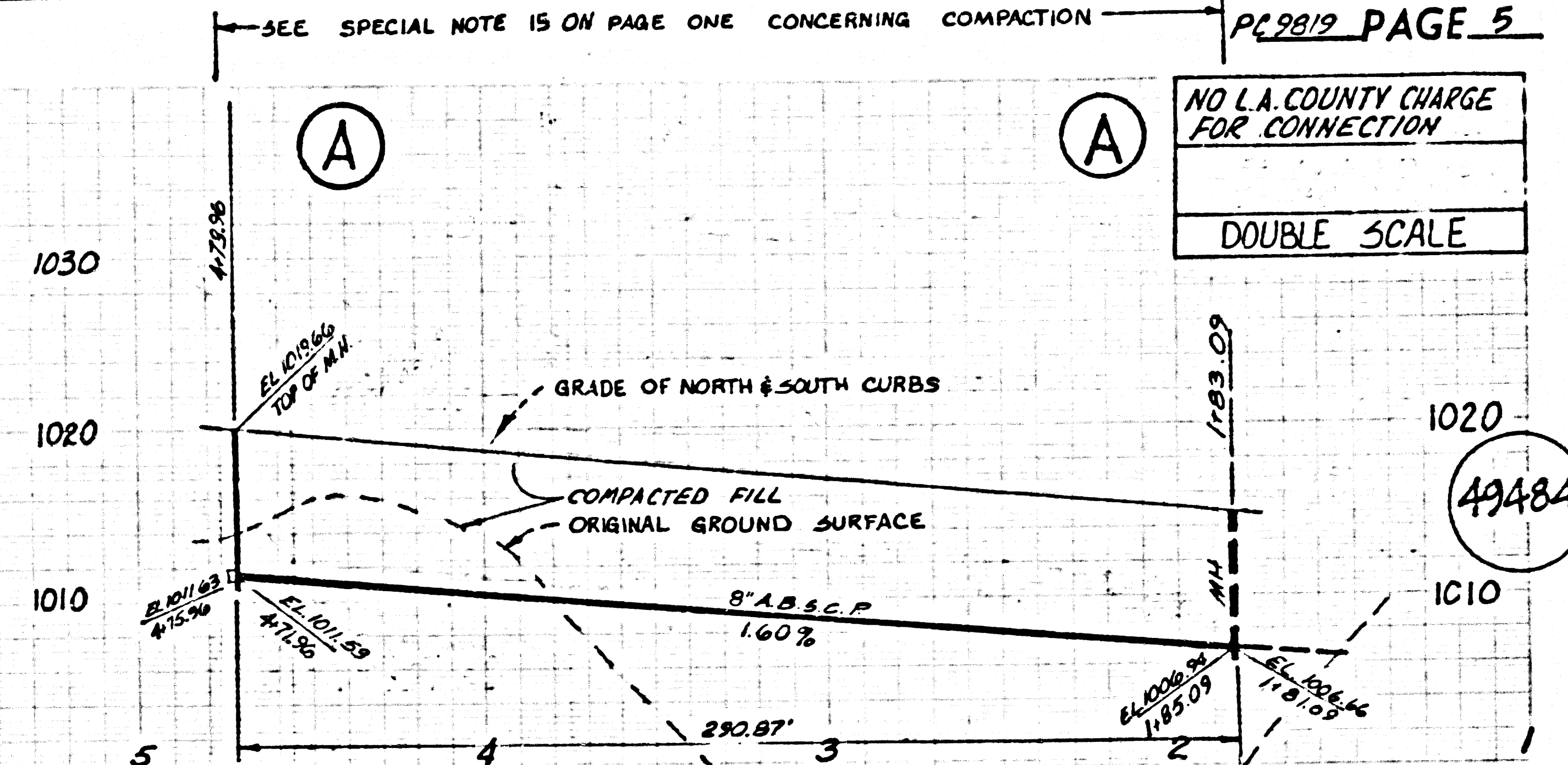
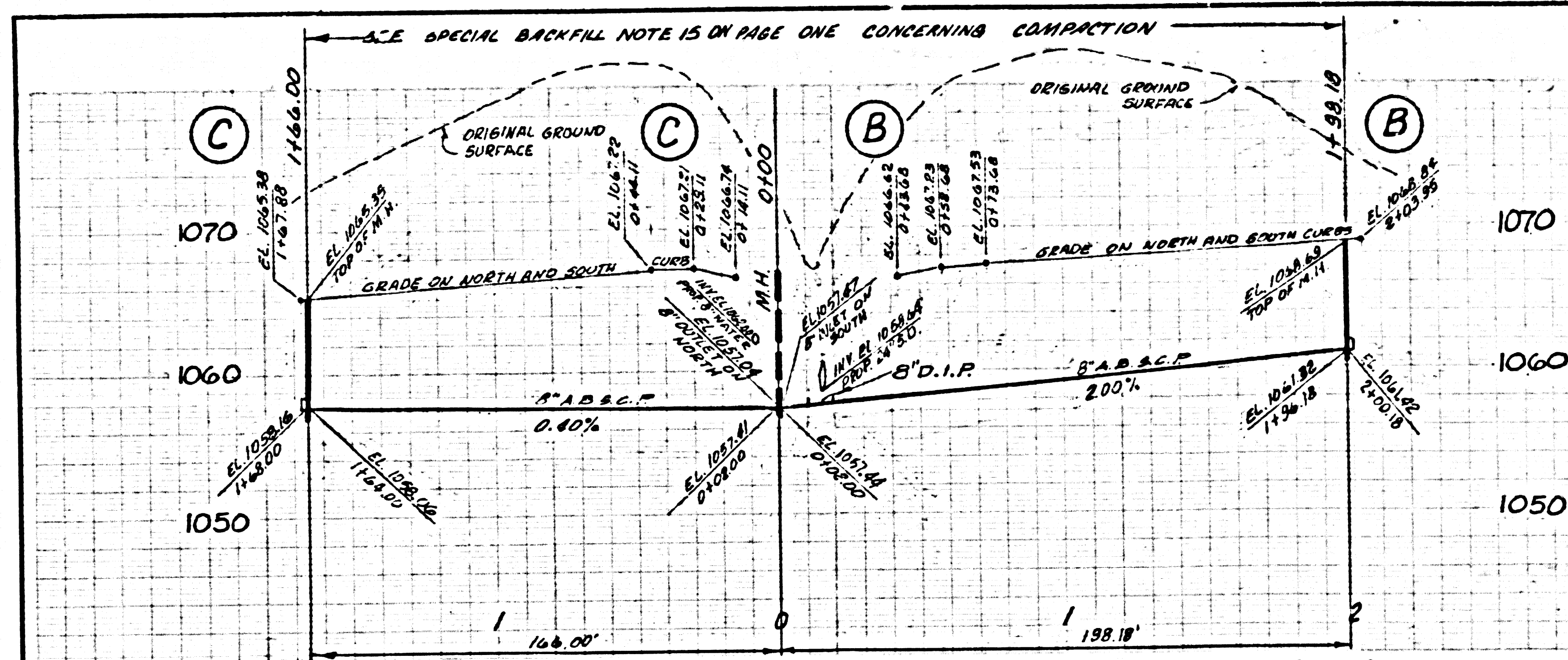
TS 2

HB

HM

HM HB

SH 18"



E 1182 29 ACROSS ON TRACT

SH

HE

HM

HW HB

SH 11"

