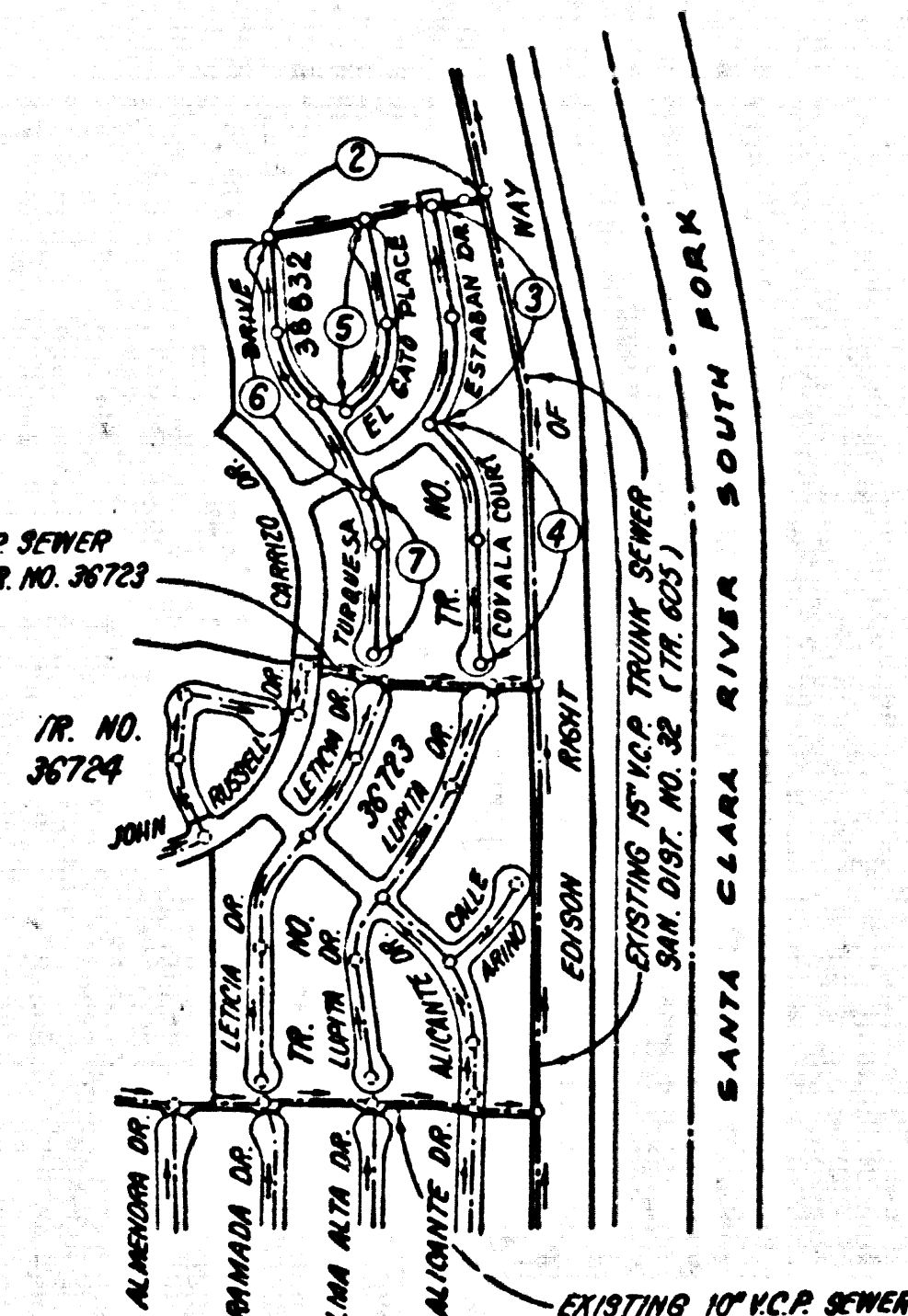


B.M. 4236 ELEV. 1211.232  
 RD. BM TAG N CB AVENIDA NAVARRE  
 77E + 30 N/O INT MCBEAN PKWY  
 @ NE COR  
 NEWHALL QUAD. 1972



INDEX MAP  
 SCALE: 1" = 620'  
 P.C. 9820  
 TRACT NO. 38832

NOTE: NUMBERS IN CIRCLES  
 INDICATE PAGE NUMBERS

- GENERAL NOTES:**
- ELEVATIONS ARE IN FEET ABOVE U.S.C. & G.S. SEA LEVEL DATUM OF 1929.
  - NO REVISIONS SHALL BE MADE IN THESE PLANS WITHOUT THE APPROVAL OF THE COUNTY ENGINEER.
  - NO REPRESENTATIVE OF THE COUNTY ENGINEER WILL SURVEY OR LAY OUT ANY PORTION OF THE WORK.
  - GRADES TO WHICH THIS IMPROVEMENT IS TO BE CONSTRUCTED ARE SHOWN ON PLANS AND PROFILES. GRADE POINTS FOR TOP OF CURBS, CENTER LINE OF STREETS, OR CENTER LINE OF ALLEYS ARE SHOWN AT CIRCLES ON PROFILES AT ALL POINTS BETWEEN DESIGNATED POINTS THE GRADE SHALL BE ESTABLISHED SO AS TO CONFORM TO A STRAIGHT LINE DRAWN BETWEEN SAID DESIGNATED POINTS.
  - THE PRIVATE ENGINEER SHALL FURNISH THE COUNTY ENGINEER WITH GRAB SHEETS AND STATIONING FOR ALL HOUSE LATERALS AND "T" OR "Y" BRANCHES AND SHALL PROVIDE STAKES FOR THEM AT THEIR PROPER LOCATIONS WITH STATIONING PLAINLY MARKED. ALL HOUSE LATERALS SHALL BE CONSTRUCTED IN A STRAIGHT ALIGNMENT AT RIGHT ANGLES FROM THE MAIN LINE SEWER EXCEPT AS SHOWN ON THE PLANS. HOUSE LATERALS FROM CHIMNEYS SHALL NOT HAVE AN ANGLE OF LESS THAN 45° WITH THE MAIN LINE SEWER. ANY CHANGE IN ALIGNMENT SHALL BE REQUESTED IN WRITING BY THE PRIVATE ENGINEER.
  - THE PRIVATE ENGINEER SHALL FURNISH THE HOUSE LATERAL DEPTH AT THE PROPERTY LINE BELOW THE TOP OF CURB ELEVATION FOR EACH HOUSE LATERAL ON THE GRADE SHEET.
  - BEFORE WORK CAN BE STARTED, THE CONTRACTOR MUST OBTAIN A PERMIT TO EXCAVATE IN COUNTY STREETS FROM THE L.A. COUNTY ROAD DEPT. DISTRICT OFFICE NO. 7 AND PAY A FEE TO THE COUNTY ENGINEER, 520 S. NEWHALL AVE., LOS ANGELES 50000, TO COVER THE COST OF CONSTRUCTION INSPECTION AND RECORD PLANS.
  - IF WORK IS TO BE DONE IN A STATE HIGHWAY, A PERMIT MUST BE OBTAINED FROM THE STATE OF CALIFORNIA, DIVISION OF HIGHWAYS, 120 SOUTH SPRING STREET, LOS ANGELES, CALIFORNIA.
  - APPROVAL OF THIS PLAN BY THE COUNTY OF LOS ANGELES DOES NOT CONSTITUTE A REPRESENTATION AS TO THE ACCURACY OF THE LOCATION OF OR THE EXISTENCE OR NON-EXISTENCE OF ANY UNDERGROUND UTILITY PIPE, OR STRUCTURE WITHIN THE LIMITS OF THIS PROJECT. THIS NOTE APPLIES TO ALL PAGES.
  - REFER TO SECTION TABLES OF THE STANDARD SPECIFICATIONS, REGARDING SAFETY ORDERS.
  - BEFORE THE ISSUANCE OF THE REQUIRED SEWER CONSTRUCTION PERMIT, THE CONTRACTOR SHALL OBTAIN AND FILE WITH THE COUNTY ENGINEER COPIES OF A PERMIT TO EXCAVATE IN COUNTY STREETS FROM THE LOS ANGELES COUNTY ROAD DEPARTMENT, A PERMIT FOR EXCAVATIONS AND TRENCHES FROM THE STATE OF CALIFORNIA, DIVISION OF INDUSTRIAL SAFETY AND A CERTIFICATE OF WORKER'S COMPENSATION INSURANCE WITH THE DEPARTMENT OF COUNTY ENGINEER, 530 SOUTH VERMONT, RM 406 LOS ANGELES, CALIFORNIA 90020, NAMED AS THE CERTIFICATE HOLDER TO BE NOTIFIED 30 DAYS PRIOR TO CANCELLATION OF POLICY.

- CONSTRUCTION NOTES:**
- WORK SHALL BE CONSTRUCTED ACCORDING TO THE STANDARD SPECIFICATIONS FOR PUBLIC WORKS CONSTRUCTION 1979 EDITION WITH 1982 SUPPLEMENTS AND COUNTY ENGINEER SPECIAL PROVISIONS FOR THE CONSTRUCTION OF SANITARY SEWERS DATED 1982.12.1876 AND SHALL BE PROSECUTED ONLY IN THE PRESENCE OF THE COUNTY ENGINEER.
  - THE CONTRACTOR SHALL NOTIFY THE CIVIL DEPT. DIVISION BY TELEPHONE, 738-2156, AT LEAST TWENTY-FOUR HOURS BEFORE STARTING ANY WORK UNDER THIS CONTRACT.
  - HOUSE LATERALS TO BE CONSTRUCTED WITH INVERTS AT PROPERTY LINE 4 FEET BELOW CURB GRADE EXCEPT AS NOTED.
  - WYE OR THE BRANCHES MAY BE USED FOR CONNECTIONS TO MAINLINE SEWERS EXCEPT AS NOTED.
  - ALL STRUCTURES SHALL BE EITHER BRICK MANHOLES PER 5-3.6 OR PRECAST CONCRETE MANHOLES PER 5-3.6 EXCEPT AS NOTED.
  - PROTECT STAKES ON THE PROPERTY LINE OR PROPERTY LINES PRODUCED AT RIGHT ANGLES TO THE SEWER LINE AT THE CENTER LINE OF EACH MANHOLE.
  - MANHOLE TOPS IN UNIMPROVED RIGHTS OF WAY TO BE 18 INCHES ABOVE FINISHED GRADE.
  - WITHIN CURB LINE RIGHTS SHALL BE 18" OR "12" PER STANDARD SPECIFICATIONS SECTION 306-2.
  - IF A POWER POLE IS WITHIN THREE FEET OF THE SEWER, THE SEWER SHALL BE ENCASED, PER 5-23, CASE II, TWO FEET ON EACH SIDE FROM THE POINT OF INTERFERENCE.
  - IF DURING THE COURSE OF CONSTRUCTION IT IS DETERMINED THAT THERE IS LESS THAN FOUR FEET OF COVER OVER THE TOP OF A MAIN LINE OR HOUSE LATERAL V.C.P. SEWER WHICH IS NOT INDICATED ON THE PLANS, THE PIPE SHALL BE ENCASED PER 5-23, CASE II UNLESS OTHERWISE APPROVED BY THE COUNTY ENGINEER.
  - ALL JOINTS BETWEEN CAST IRON PIPE AND VITRIFIED CLAY PIPE SHALL BE MADE WITH A RUBBER SLIP JOINT, TYPE "C" OR "D", WITH BUSHING IF NECESSARY PER STANDARD SPECIFICATIONS, SECTION 306-3.
  - SEWERS TO BE TESTED FOR LEAKAGE PER SECTION 306-23.7 OF THE STANDARD SPECIFICATIONS AND SPECIAL PROVISIONS.
  - REPAIRS TO ALL TRENCHES WITHIN PAVED AREAS TO MEET L.A. COUNTY ROAD DEPT. OR CALIFORNIA STATE HIGHWAY REQUIREMENTS IN ACCORDANCE WITH PERMITS.
  - FULL COMPLIANCE WITH SECTION 306-2.4 OF THE SPECIAL PROVISIONS WILL BE REQUIRED FOR BACKFILL IN STREETS. CERTIFICATION OF BACKFILL COMPACTION AND SAND CONTAINMENTS BY A QUALIFIED, REGISTERED TESTING LABORATORY SHALL BE PROVIDED BY THE PERMITTEE PRIOR TO THE RESUMPTION OF A CERTIFICATE OF PARTIAL ACCEPTANCE.
  - SPECIAL BACKFILL IN EASEMENT CONSTRUCTION: (A) BACKFILL TRENCH AND REPLACE OTHER EXISTING SO AS TO ACHIEVE THE NATURAL OR FINISHED GRADES AND SURFES SHOWN ON THE DRAWING IN AN APPROVED MANNER FOR THIS REQUIREMENT OF THE BUILDING & SAFETY DIVISION. (B) ALL BACKFILL AND SAND CONTAINMENTS SHALL BE COMPACTED TO A MINIMUM OF 95% OF MAXIMUM DRY WEIGHT ACCORDING TO ASTM METHOD D 1557 AS MODIFIED. ACCEPTABLE CERTIFICATION OF SUCH COMPACTION SHALL BE SUBMITTED TO THE ENVIRONMENTAL DEVELOPMENT DIVISION.

TO BE CONSTRUCTED IN  
**TRACT NO. 38832**

**PRIVATE CONTRACT NO. 9820**

261 S 121  
 W.S. 62

4 SHEETS, 7 PAGES

SCALE: VERT. 1" = 4' NOVEMBER 29, 1979

PREPARED IN THE OFFICES OF  
**BIKAND ENGINEERING ASSOCIATES**  
 15230 BURBANK BLVD.  
 VAN NUYS, CALIF. 91411 (213) 787-8550

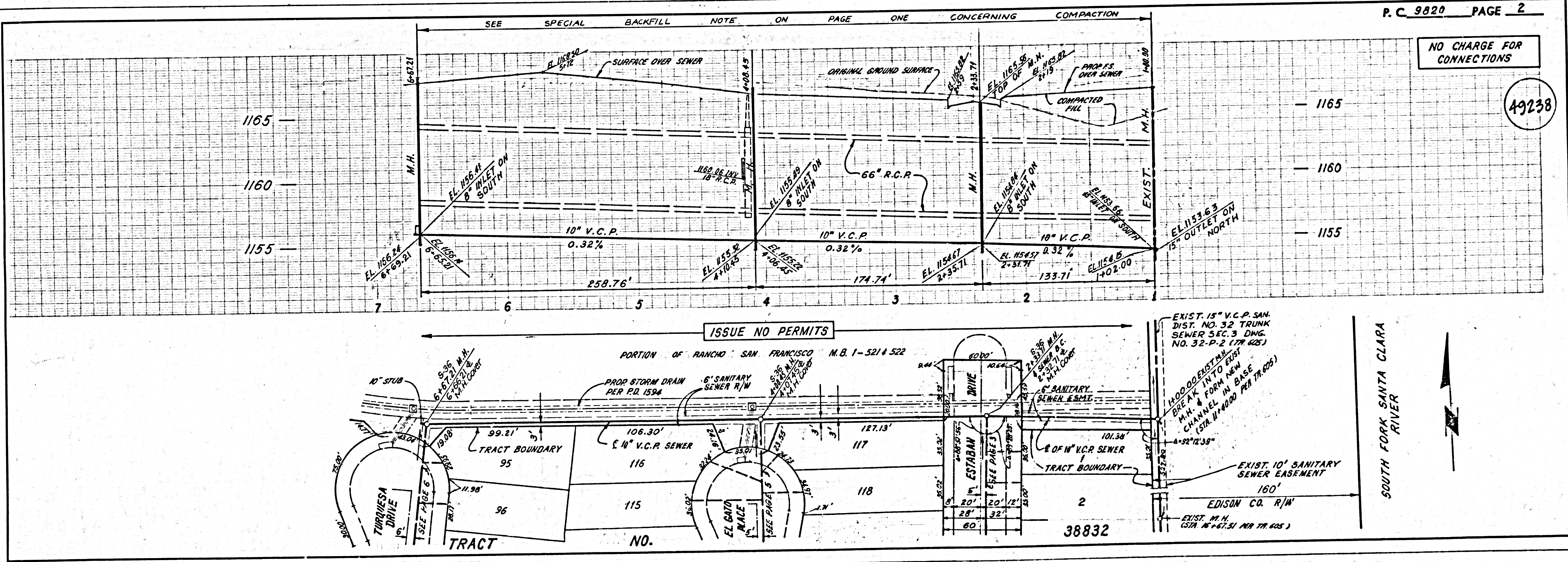
BY: N. V. K. K. K.  
 REG. C. E. NO. 21833

49237

THE FOLLOWING LATEST REVISED STANDARD PLANS ON FILE IN THE OFFICE OF THE COUNTY ENGINEER SHALL APPLY IN THE CONSTRUCTION OF THIS PROJECT:

STANDARD	5-3
MINIMUM PUBLIC SAFETY REQUIREMENTS	5-3
BRICK MANHOLE	5-3
STANDARD MANHOLE STEP	5-3
BRICKING FOR SEWER PIPE	5-3
CALLING AND ENCASING	5-3
WYS ON THE SUPPORT	5-3
ALLOWABLE TRENCH WIDTHS	5-3
LOCKING MANHOLE FRAME AND COVER	5-3
NON-BRICKWORK PRECAST CONCRETE MANHOLE	5-3

COUNTY OF LOS ANGELES, CALIFORNIA  
 STEPHEN J. ROONEY, COUNTY ENGINEER  
 WALTER E. GARRISON, CHIEF ENGINEER  
 CO. SAN DIST. NO. 32  
 APPROVED Martin L. Murphy 11/18/80  
 APPROVED Steven J. Galt 11/17/80  
 CHECKED Ralph D. Smith 11/6/80  
 REG. C. E. NO. 16983  
 SANTA CLARITA M.D.G. DIST. 82

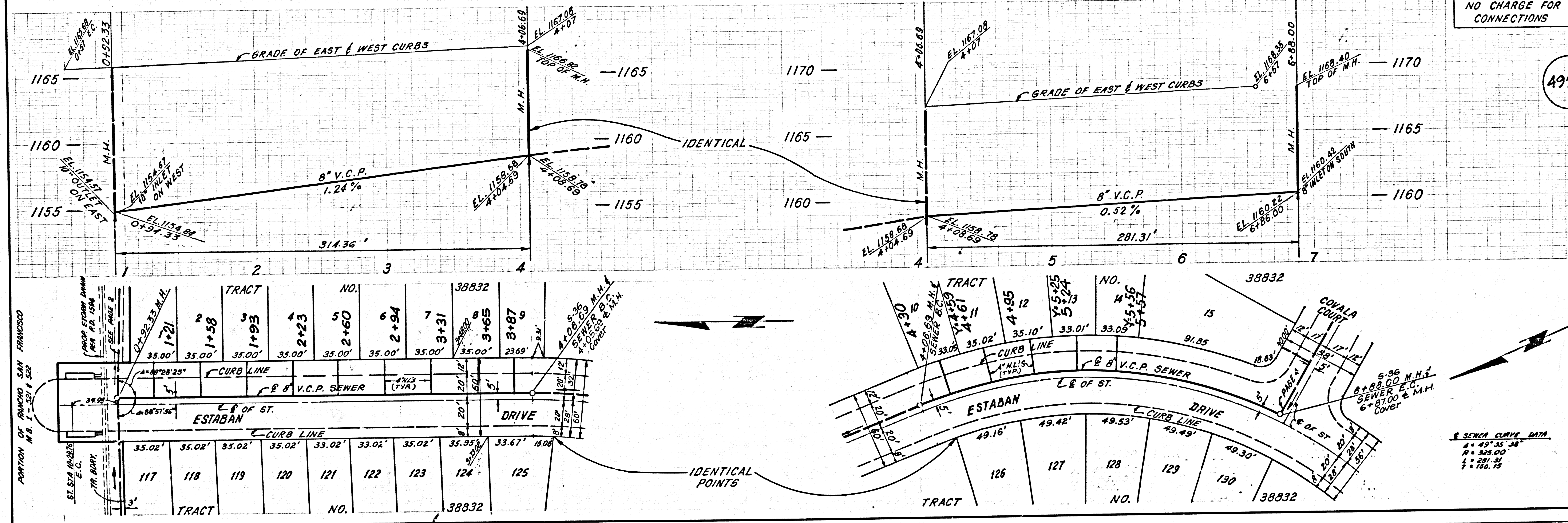


NO CHARGE FOR CONNECTIONS

49238

NO CHARGE FOR CONNECTIONS

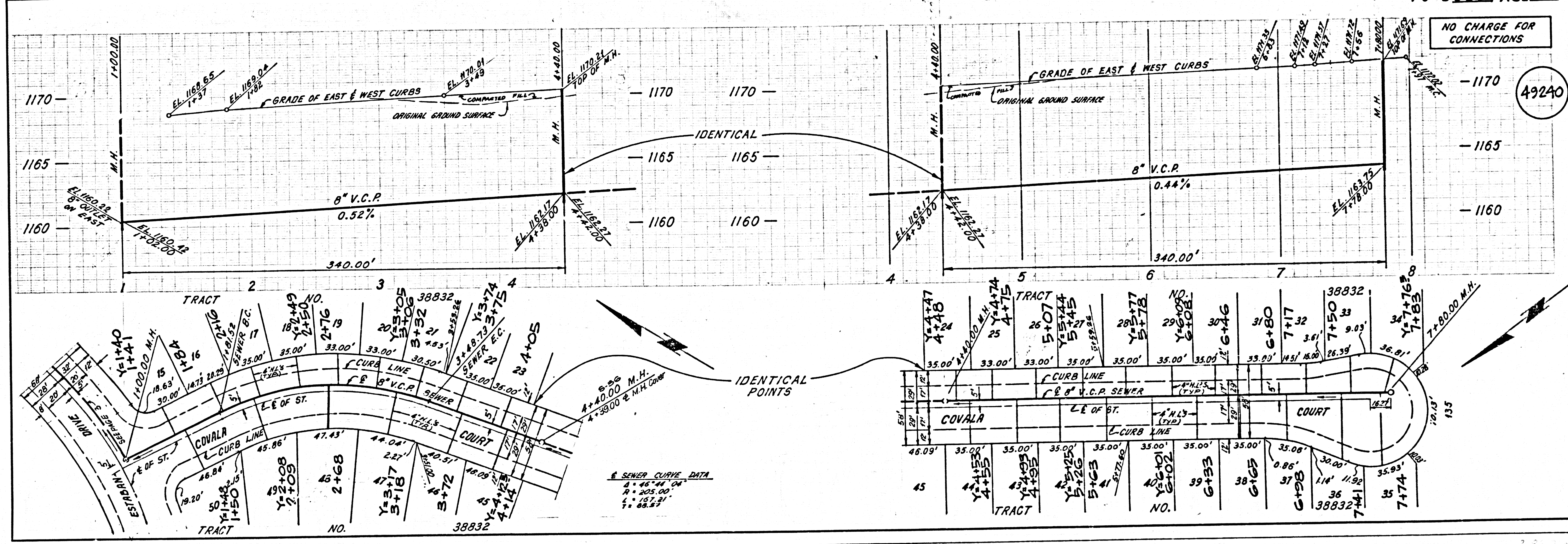
49239



TRACT NO.	NO.	NO.	NO.	NO.	NO.	NO.	NO.	NO.	NO.
117	118	119	120	121	122	123	124	125	
									38832

NO CHARGE FOR CONNECTIONS

49240



TRACT NO.	NO.	NO.	NO.	NO.	NO.	NO.	NO.	NO.	NO.
117	118	119	120	121	122	123	124	125	
									38832

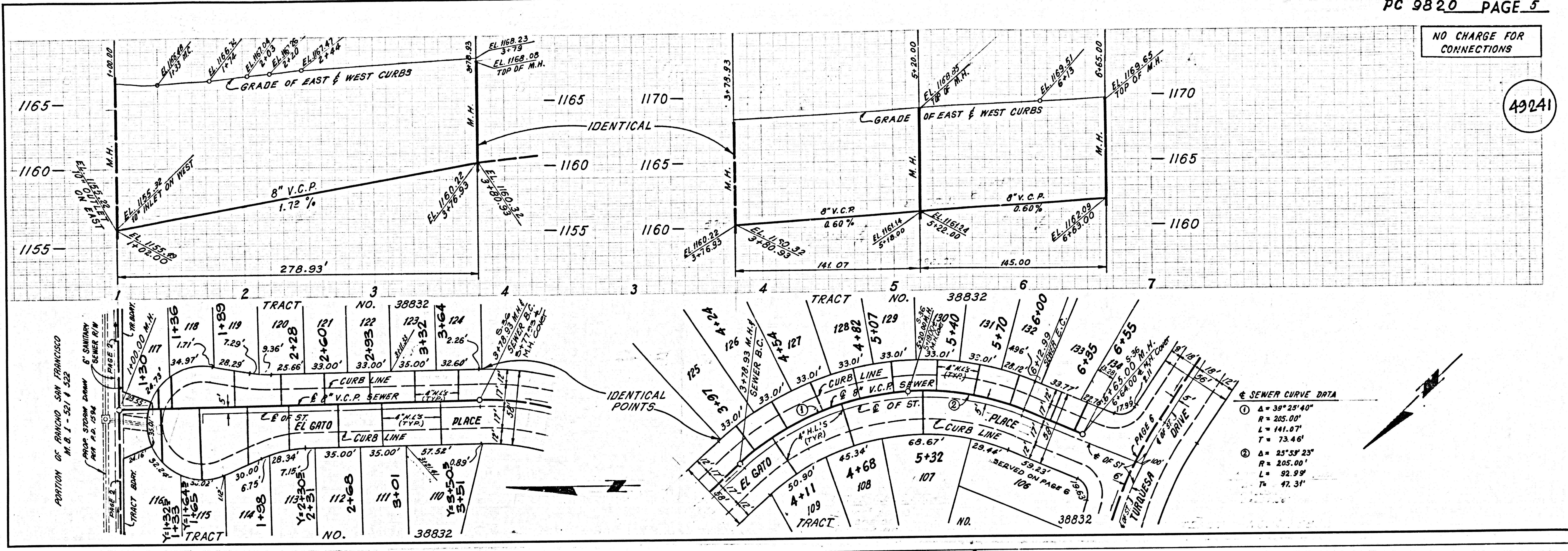
5

0586 DC

58883 ON TRACT

NO CHARGE FOR CONNECTIONS

49241

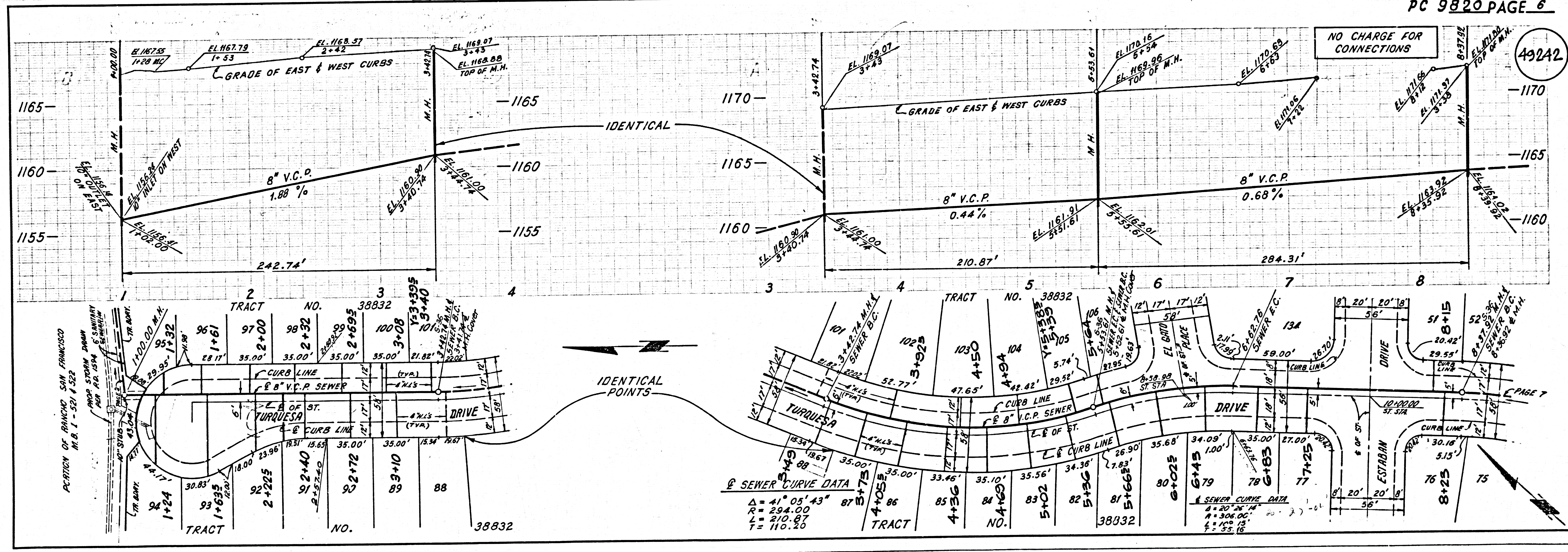


SEWER CURVE DATA

①	Δ = 39° 25' 40"
	R = 205.00'
	L = 141.07'
	T = 73.46'
②	Δ = 25° 59' 23"
	R = 205.00'
	L = 92.99'
	T = 47.31'

NO CHARGE FOR CONNECTIONS

49242



SEWER CURVE DATA

①	Δ = 41° 05' 43"
	R = 204.00'
	L = 210.87'
	T = 110.20'
②	Δ = 20° 25' 14"
	R = 306.00'
	L = 178.52'
	T = 88.52'

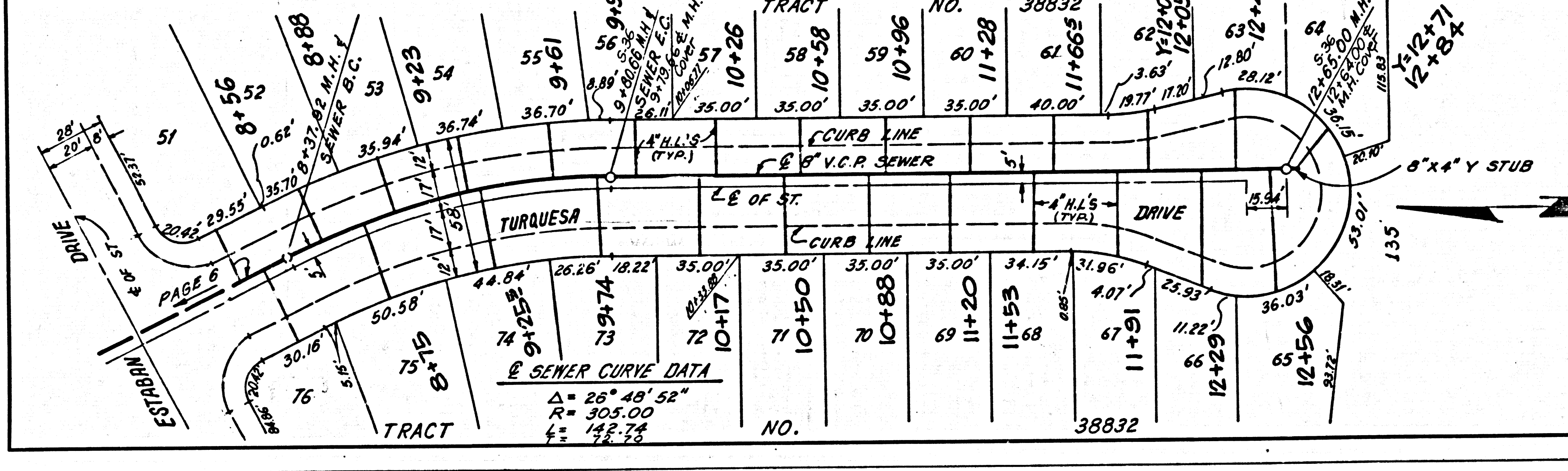
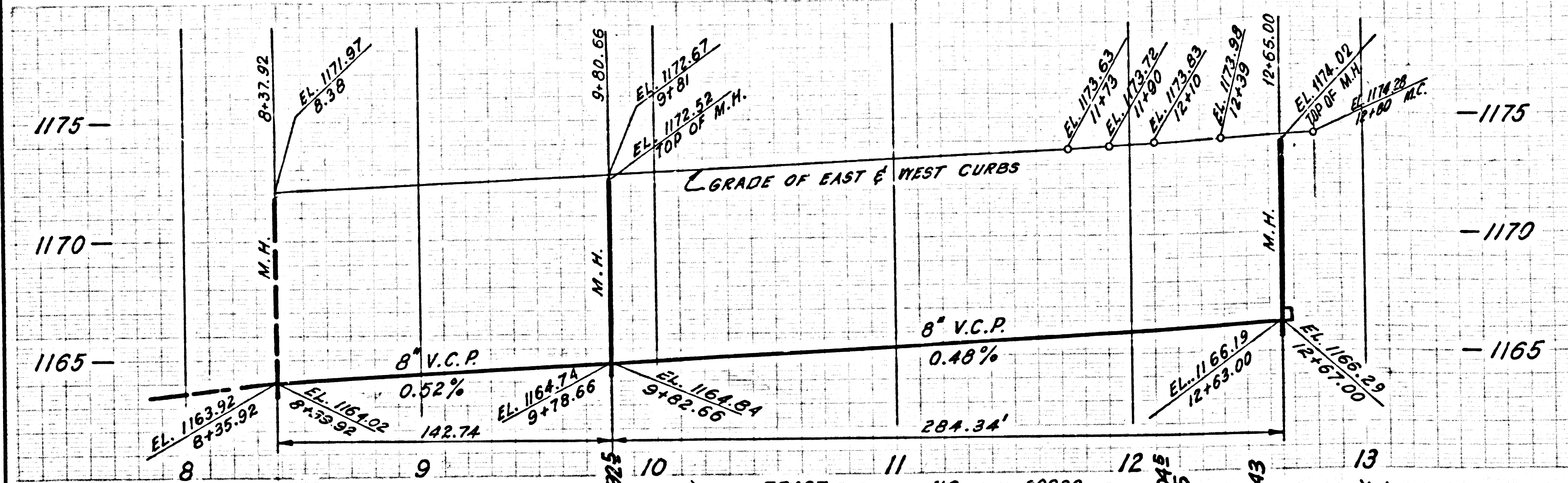
3

0580 BC 0850

5885 ON TRACT

NO CHARGE FOR CONNECTIONS

49243

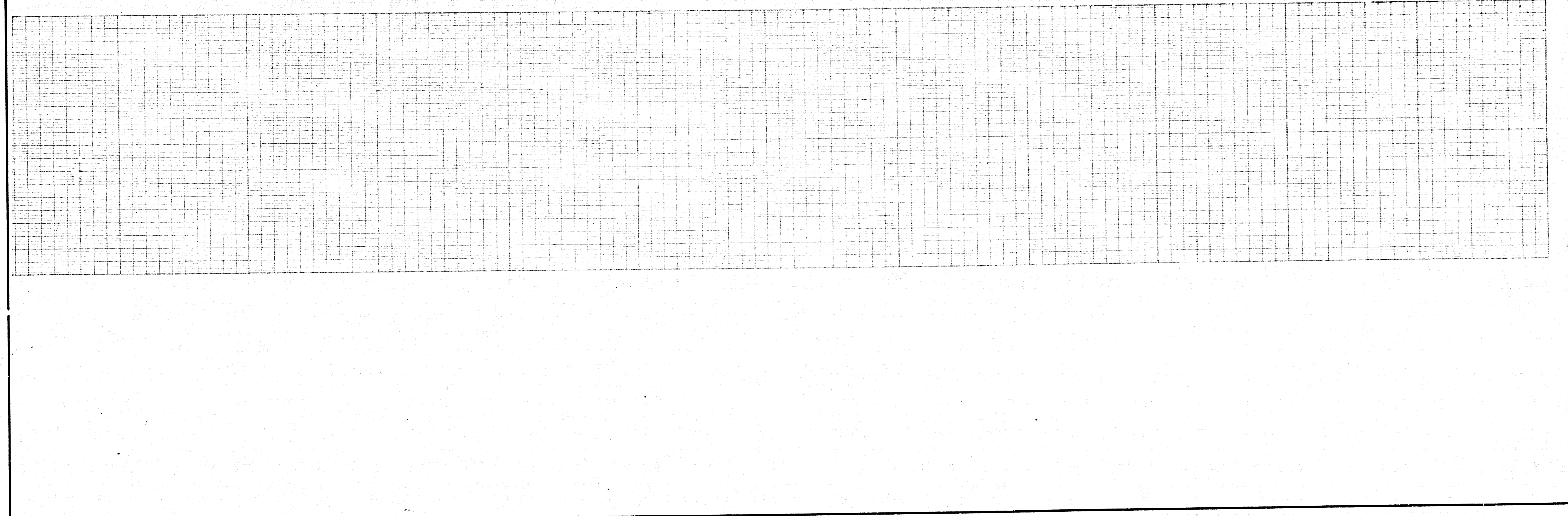


L.A. COUNTY SEWER SHEET NO. 2 SOUTHERN CALIFORNIA BLUEPRINT CO. 2025 679

4

0580 29

5686 ON 12A91



L.A. COUNTY SEWER SHEET NO. 2 SOUTHERN CALIFORNIA BLUEPRINT CO. 2025 679

28832