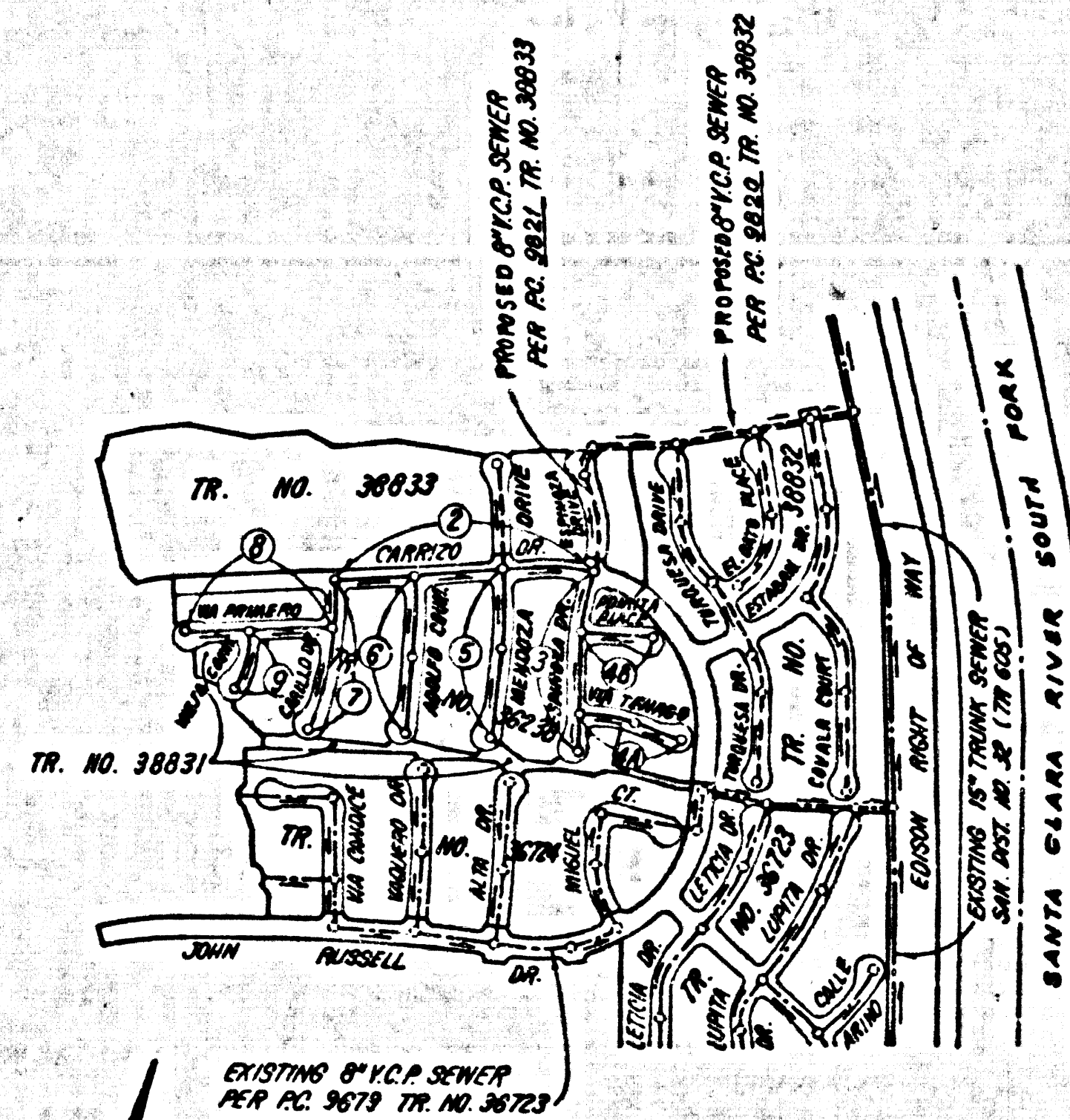


B.M. BL 4236 ELEV. 1211.232
 RD. 8M TAG N CB AVENIDA NAVARRE
 73 E + 30 W/O INT. McBEAN PKWY
 @ W.C. COR
 NEWHALL QUAD. 19 72



INDEX MAP
 SCALE: 1"=500'
 P.C. 9822
 TRACT NO'S 38831 & 36238

NOTE: NUMBERS IN CIRCLES INDICATE PAGE NUMBERS

REVISION:
 1. REFILED TRACT NO. 36238 OVER PORTION OF TRACT NO. 38831 & 38833.
 2. ADDED H.L.'S FOR LOTS 4, 5, 11, 12, 16, 17, 19, 24, 25, 31, 36, 37, 43, 47, 53, 54, 62, 67, 68, 73, 74, 79, 80, 85, 86 & 88 IN TRACT NO. 36238.
 3. ADDED H.L.'S FOR LOTS 1, 2, 4 & 8 IN FUTURE TRACT NO. 36235.

APPROVED: *[Signature]* DATE: 4/14/83
 R.C.E. NO. _____
 OFFICE OF THE COUNTY ENGINEER

REVISION:
 PAGE 7 (I) REVISED LOT FRONTS FOR LOTS 17-20, & 21-23.
 (2) DELETED PROP. SEWER LATERALS FOR LOTS 13, 24, 25, & ADDED PROP. SEWER LATERALS FOR LOTS 26 & 27.

APPROVED: *[Signature]* DATE: 4/11/83
 R.C.E. NO. 14883
 OFFICE OF THE COUNTY ENGINEER

NOTE: NO PERMITS WITH OUTLETS
 R.C. 9820 & R.C. 9821 ARE ACCEPTED.

NO CONNECTION FOR THE DISPOSAL OF INDUSTRIAL WASTES SHALL BE MADE TO SEWERS SHOWN ON THESE DRAWINGS UNTIL A PERMIT FOR INDUSTRIAL WASTEWATER DISCHARGE HAS BEEN ISSUED BY THE SANITATION DISTRICTS FOR SAID CONNECTION.

BEFORE BREAKING INTO OR CONSTRUCTION ON A COUNTY SANITATION DISTRICT SEWER AND PRIOR TO FINAL ACCEPTANCE OF THE PROJECT, SANITATION DISTRICT INSPECTOR SHALL BE NOTIFIED BY PHONE - 962-8405 458-1126 SO THAT REQUIRED INSPECTION CAN BE MADE.

GENERAL NOTES:

1. ELEVATIONS ARE IN FEET ABOVE M.S.L. & U.S. SEA LEVEL DATUM OF 1929.
2. NO REVISIONS SHALL BE MADE IN THESE PLANS WITHOUT THE APPROVAL OF THE COUNTY ENGINEER.
3. NO REPRESENTATIVE OF THE COUNTY ENGINEER WILL SURVEY OR LAY OUT ANY PORTION OF THE WORK.
4. GRADES TO WHICH THE IMPROVEMENTS ARE TO BE CONSTRUCTED ARE SHOWN ON PLANS AND PROFILES. GRADE POINTS FOR TOP OF CURBS, CENTER LINE OF STREETS, OR CENTER LINE OF ALLEYS ARE SHOWN IN CIRCLES ON PROFILES. AT ALL POINTS BETWEEN DESIGNATED POINTS THE GRADE SHALL BE ESTABLISHED SO AS TO CONFORM TO A STRAIGHT LINE DRAWN BETWEEN SAID DESIGNATED POINTS.
5. THE PRIVATE ENGINEER SHALL FURNISH THE COUNTY ENGINEER WITH GRADE SHEETS AND STATIONING FOR ALL HOUSE LATERALS AND "T" OR "Y" BRANCHES AND SHALL PROVIDE STAKES FOR THEM AT THEIR PROPER LOCATIONS WITH STATIONING PLAINLY MARKED. ALL HOUSE LATERALS SHALL BE CONSTRUCTED IN A STRAIGHT ALIGNMENT AT RIGHT ANGLES FROM THE MAIN LINE SEWER EXCEPT AS SHOWN ON THE PLANS. HOUSE LATERALS SHALL HAVE AN ANGLE OF LESS THAN 45° WITH THE MAIN LINE SEWER. ANY CHANGE IN ALIGNMENT SHALL BE REQUESTED IN WRITING BY THE PRIVATE ENGINEER.
6. THE PRIVATE ENGINEER SHALL FURNISH THE HOUSE LATERAL SEWER AT THE PROPERTY LINE BELOW THE TOP OF CURB ELEVATION FOR EACH HOUSE LATERAL ON THE GRADE SHEET.
7. BEFORE WORK CAN BE STARTED, THE CONTRACTOR MUST OBTAIN A PERMIT TO EXCAVATE IN COUNTY STREETS FROM THE L.A. COUNTY ROAD DEPT., DISTRICT OFFICE NO. 5, 407 WEST 4TH ST., LOS ANGELES, CALIF. 90012. THE PERMIT SHALL COVER THE COST OF CONSTRUCTION INSPECTION AND RECORD PLANS.
8. IF WORK IS TO BE DONE IN A STATE HIGHWAY, A PERMIT MUST BE OBTAINED FROM THE STATE OF CALIFORNIA, DIVISION OF HIGHWAYS, 120 SOUTH SPRING STREET, LOS ANGELES, CALIFORNIA.
9. APPROVAL OF THIS PLAN BY THE COUNTY OF LOS ANGELES DOES NOT CONSTITUTE A REPRESENTATION AS TO THE ACCURACY OF THE LOCATION OF OR THE EXISTENCE OR NON-EXISTENCE OF ANY UNDERGROUND UTILITY PIPE, OR STRUCTURE WITHIN THE LIMITS OF THIS PROJECT. THIS NOTE APPLIES TO ALL PAGES.
10. REFER TO SECTION 384.01 OF THE STANDARD SPECIFICATIONS, REGARDING SAFETY ORDS.
11. PRIOR TO THE ISSUANCE OF THE REQUIRED SEWER CONSTRUCTION PERMIT, THE CONTRACTOR SHALL OBTAIN AND FILE WITH THE COUNTY ENGINEER COPIES OF A PERMIT TO EXCAVATE IN COUNTY STREETS FROM THE LOS ANGELES COUNTY ROAD DEPARTMENT, A PERMIT FOR EXCAVATIONS AND TRENCHES FROM THE STATE OF CALIFORNIA, DIVISION OF INDUSTRIAL SAFETY AND A CERTIFICATE OF WORKER'S COMPENSATION INSURANCE WITH THE DEPARTMENT OF COUNTY ENGINEER, 500 SOUTH VERMONT, RM 445 LOS ANGELES, CALIFORNIA 90033. WORKERS SHALL BE NOTIFIED 30 DAYS PRIOR TO CANCELLATION OF POLICY.

CONSTRUCTION NOTES:

1. WORK SHALL BE CONSTRUCTED ACCORDING TO THE STANDARD SPECIFICATIONS FOR PUBLIC HOUSE CONSTRUCTION (THE SEWER) WITH 1982 SUPPLEMENT AND COUNTY ENGINEER SPECIAL PROVISIONS FOR THE CONSTRUCTION OF SANITARY SEWERS DATED SEPT. 24, 1976 AND SHALL BE PROSECUTED ONLY IN THE PRESENCE OF THE COUNTY ENGINEER.
2. THE CONTRACTOR SHALL NOTIFY THE P.W. DIVISION OF TRENCHING, 728-B N. 1ST ST., LOS ANGELES, CALIF. 90012, AT LEAST TWENTY-FOUR HOURS BEFORE STARTING ANY WORK UNDER THIS CONTRACT.
3. HOUSE LATERALS SHALL BE CONSTRUCTED WITH SEWER AT PROPERTY LINE & FEET BELOW CURB GRADE EXCEPT AS NOTED.
4. WYE OR TEE BRANCHES MAY BE USED FOR CONNECTIONS TO MAINLINE SEWERS EXCEPT AS NOTED.
5. ALL STRUCTURES SHALL BE EITHER BRICK MANHOLES PER 5-3 OR PRECAST CONCRETE MANHOLES PER 5-26, EXCEPT AS NOTED.
6. HOUSING STAKES ON THE PROPERTY LINE OR PROPERTY LINE PRODUCE AT RIGHT ANGLES TO THE SEWER LINE AT THE CENTER LINE OF EACH MANHOLE.
7. MANHOLE TOPS IN UNIMPROVED PORTS OF WAY TO BE SIX INCHES ABOVE FINISHED GRADE.
8. VITRIFIED CLAY PIPE JOINTS SHALL BE TYPE "B", "C" OR "D" PER STANDARD SPECIFICATIONS SECTION 384-3.
9. IF A POWER POLE IS WITHIN THREE FEET OF THE SEWER, THE SEWER SHALL BE ENCASED, PER 5-25, CASE B, TWO FEET ON EACH SIDE FROM THE POINT OF INTERFERENCE.
10. IF DURING THE COURSE OF CONSTRUCTION IT IS DETERMINED THAT THERE IS LESS THAN FOUR FEET OF COVER OVER THE TOP OF A MAIN LINE OR HOUSE LATERAL V.C.P. SEWER WHICH IS NOT INDICATED ON THE PLANS, THE PIPE SHALL BE ENCASED PER 5-25, CASE B UNLESS OTHERWISE AS NOTED BY THE COUNTY ENGINEER.
11. ALL JOINTS BETWEEN CAST IRON PIPE AND VITRIFIED CLAY PIPE SHALL BE MADE WITH A RUBBER SLEEVE JOINT, TYPE "C" OR "D", WITH RUBBER IF NECESSARY PER STANDARD SPECIFICATIONS, SECTION 384-3.
12. SEWERS TO BE TESTED FOR LEAKAGE PER SECTION 384.2.3 OF THE STANDARD SPECIFICATIONS AND SPECIAL PROVISIONS.
13. APPROVAL ALL TRENCHES WITHIN RAMP AREAS TO MEET L.A. COUNTY ROAD DEPT. OR CALIFORNIA STATE HIGHWAY REQUIREMENTS IN ACCORDANCE WITH PERMITS.
14. FULL COMPLIANCE WITH SECTION 384.1.3 OF THE SPECIAL PROVISIONS WILL BE REQUIRED FOR BACKFILL IN STREETS. CERTIFICATION OF ADEQUATE COMPACTION AND SAND EQUIVALENTS BY A QUALIFIED REGISTERED TESTING LABORATORY SHALL BE PROVIDED BY THE PERMITTEE PRIOR TO THE ISSUANCE OF A CERTIFICATE OF PARTIAL ACCEPTANCE.

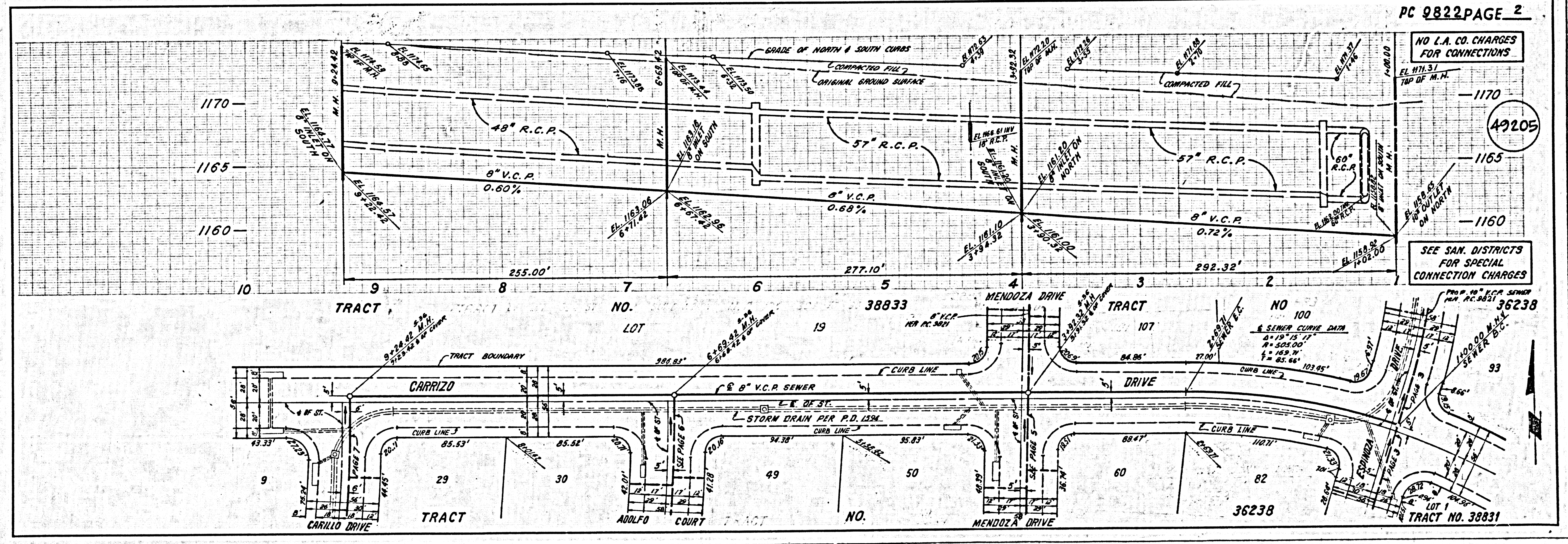
PROFILE, ALIGNMENT AND GRADE OF
SANITARY SEWERS PAGE 1
 TO BE CONSTRUCTED IN
TRACT NO'S 38831 & 36238

PRIVATE CONTRACT NO. 9822
 258 S 121
 W.S. 62
 5 SHEETS, 9 PAGES
 SCALE: VERT. 1"=4'
 HORIZ. 1"=40'
 JANUARY 3, 1980
 PREPARED IN THE OFFICES OF
 SHAW ENGINEERING ASSOCIATES
 15230 WILSHIRE BLVD., VAN NUYS,
 CALIFORNIA 91411 (818) 781-8530
 BY: *[Signature]*
 REG. C. E. No. 21893

THE FOLLOWING LATEST REVISED STANDARD PLANS ON FILE IN THE OFFICE OF THE COUNTY ENGINEER SHALL APPLY IN THE CONSTRUCTION OF THIS PROJECT:

STANDARD SPECIFICATIONS	5-1
AMERICAN PUBLIC SAFETY MEASUREMENTS	5-2
BRICK MANHOLES	5-3
STANDARD MANHOLE DEPT	5-4
REVISIONS FOR SEWER PIPE	5-5
CLIPPING AND DISCARDMENT	5-6
WYE OR TEE SUPPORT	5-7
ALSO AVAILABLE THROUGH THE OFFICE OF THE COUNTY ENGINEER	5-8
LOADING MANHOLE FRAME AND COVER	5-9
NON-REINFORCED PRECAST CONCRETE MANHOLES	5-10

COUNTY OF LOS ANGELES, CALIFORNIA
 STEPHEN J. RONCE, COUNTY ENGINEER
 WALTER E. GARRISON, CHIEF ENGINEER
 CO. SAN DIST. NO. 32
 APPROVED: *[Signature]* DATE: 11/17/80
 APPROVED: *[Signature]* DATE: 11/17/80
 CHECKED: *[Signature]* DATE: 11/16/80
 REG. C.E. NO. 16953
 SANTA CLARITA RDG. DIST. 82



PC 9822 PAGE 2

NO L.A. CO. CHARGES FOR CONNECTIONS

SEE SAN. DISTRICTS FOR SPECIAL CONNECTION CHARGES

49205

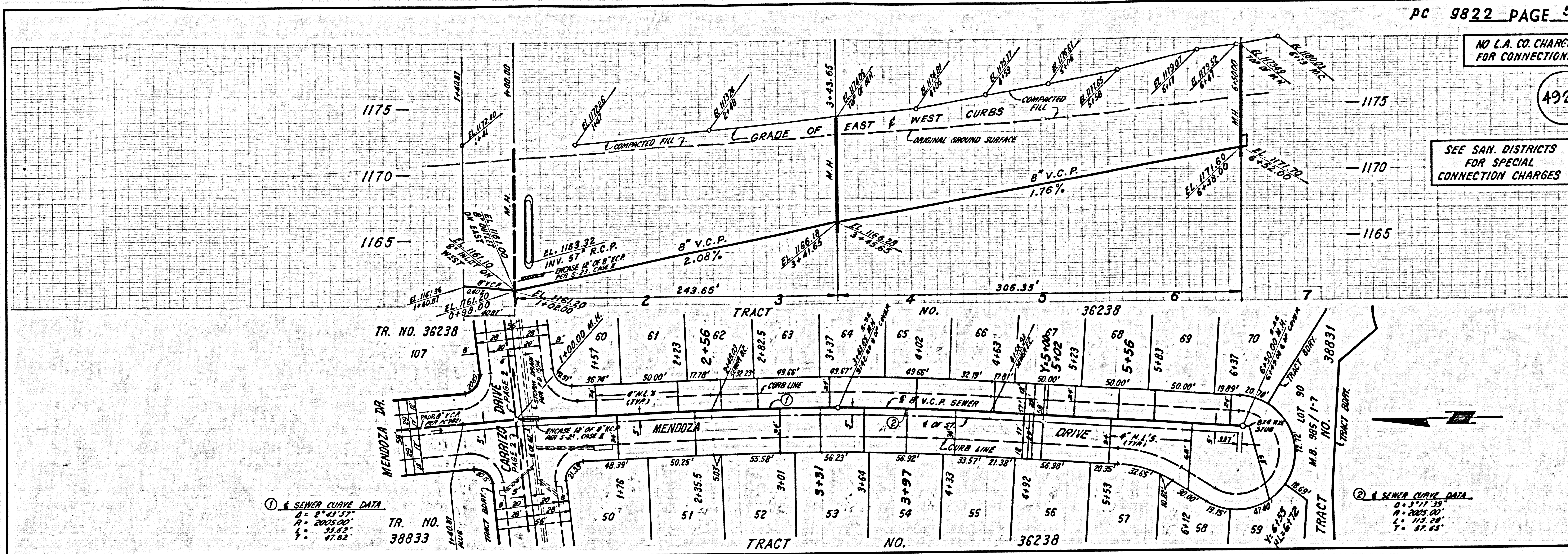
NO 100
 6" SEWER CURVE DATA
 Δ = 19° 15' 17"
 P = 555.00'
 L = 163.7'
 E = 85.66'

TRACT NO. 38831

NO L.A. CO. CHARGES FOR CONNECTIONS

49208

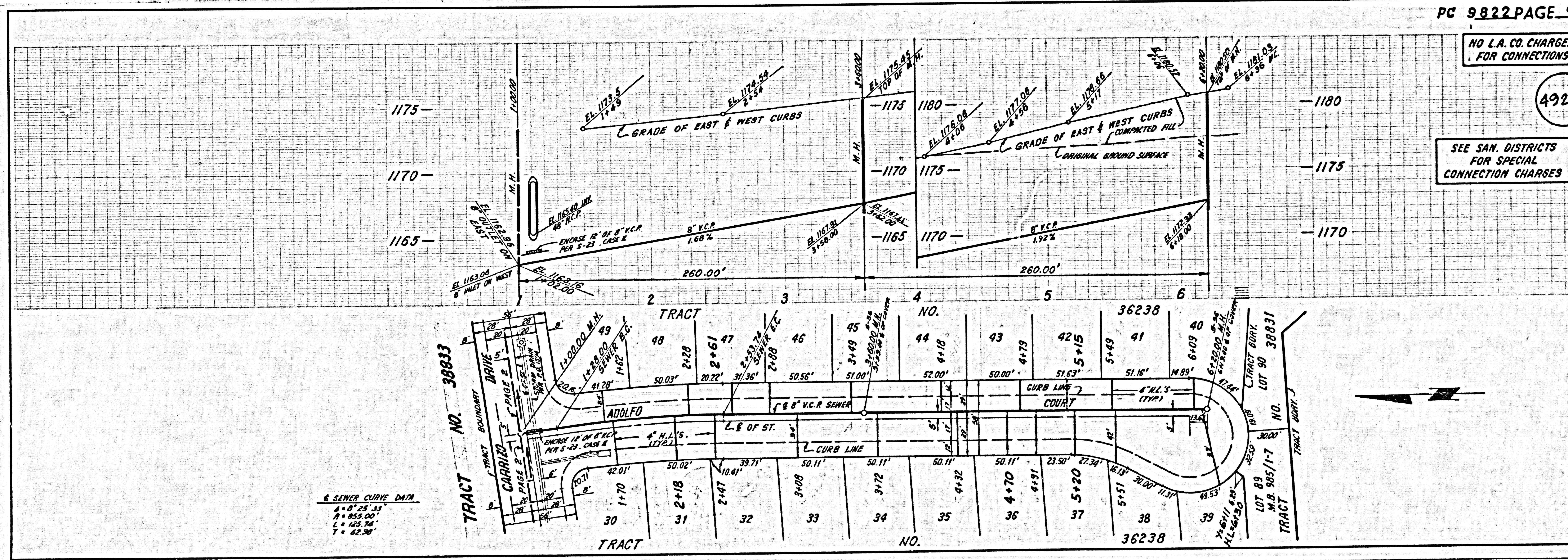
SEE SAN. DISTRICTS FOR SPECIAL CONNECTION CHARGES



NO L.A. CO. CHARGES FOR CONNECTIONS

49209

SEE SAN. DISTRICTS FOR SPECIAL CONNECTION CHARGES



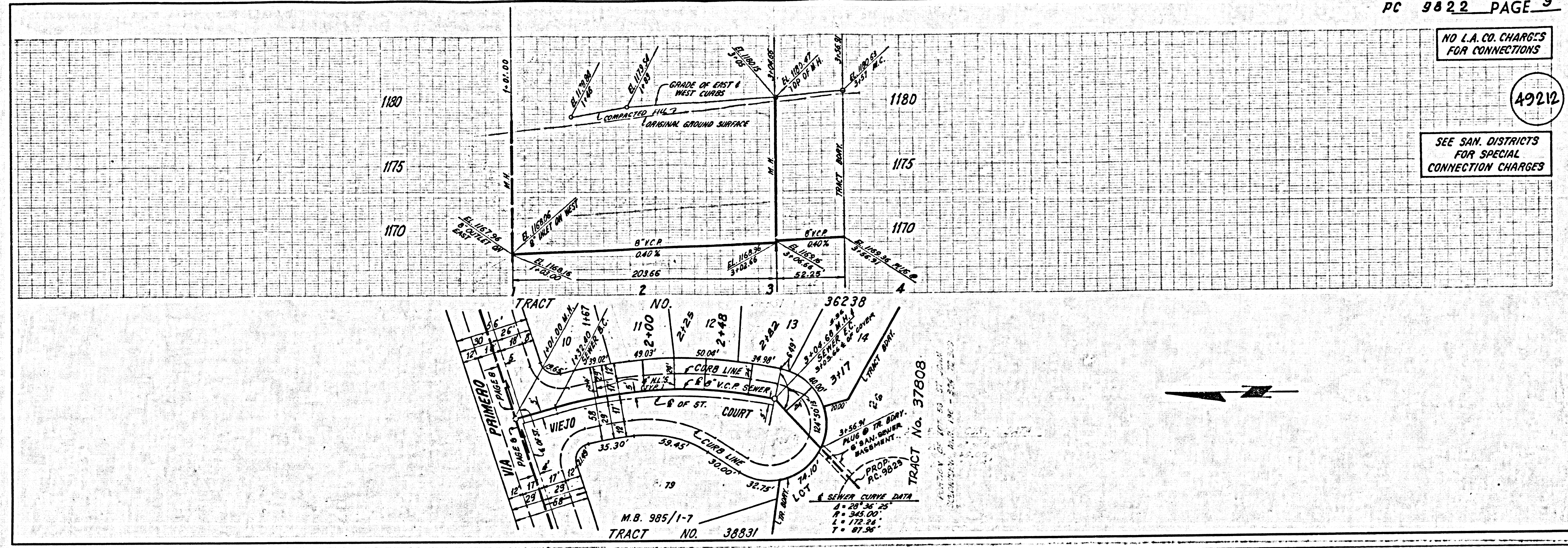
38831
1988 ON TRACT
8538

38831

NO L.A. CO. CHARGES FOR CONNECTIONS

49212

SEE SAN. DISTRICTS FOR SPECIAL CONNECTION CHARGES



1988 ON TRACT 38831