

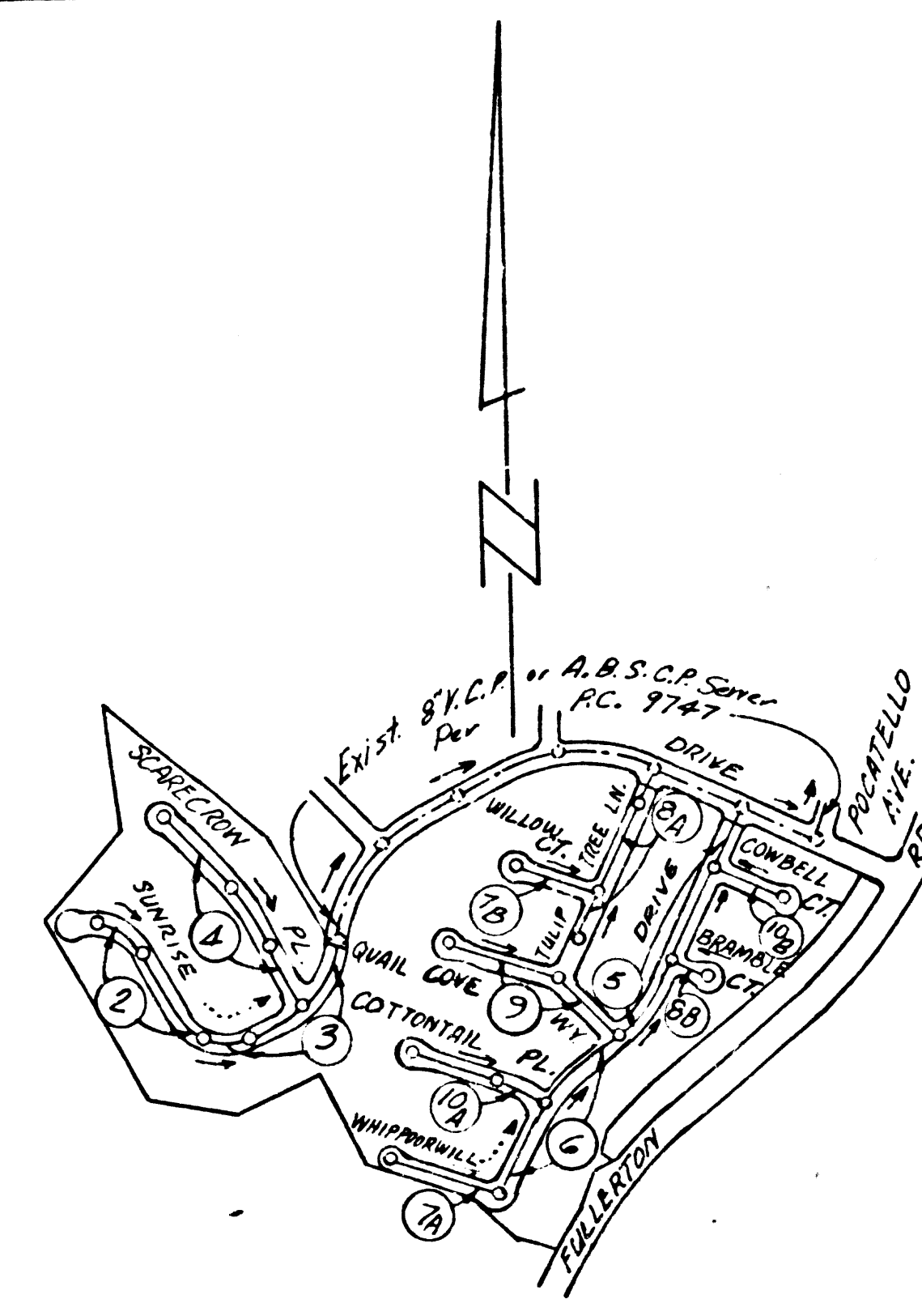
TO BE CONSTRUCTED IN

TRACT NO. 36860 PRIVATE CONTRACT NO. 9826

W.S. 38-C, 5 5 SHEETS, 10 PAGES 49818 SCALE: VERT. 1"=4' HORIZ. 1"=40' JANUARY, 1980 PREPARED IN THE OFFICES OF KEMMERER ENGINEERING CO. INC. 6705 So. PAINTER AVE., WHITTIER CA. 90608 (213) 698-0791 BY Robert R. Flores REG. C. E. No. 11349

B.M. C.G. 3802 ELEV. 549.398 L.G.T. IN C.B. 10 FT. N. B.C.R. 65 FT. N. & 30 FT. E. & INT. FULLERTON ROAD & SENTENO STREET OTTERBEIN QUAD. 1975

REVISION NO. 1 JAN. 29, 1981 PAGE 1 - NOTE: LOTS 81 THROUGH 89 INCLUSIVE, SERVED BY P.C. 9747 PAGES 75 & 8A CHANGED TO NOTE: LOTS 80 & 89 INCLUSIVE... PAGE 2 - LOT 98 CHANGED TO LOT 97, LOTS 95 & 100 COMBINED TO FORM LOT 96, LOTS 101 TO 111 INCLUSIVE... PAGE 3 - LOTS 91 TO 99 INCLUSIVE, CHANGED TO LOTS 90 TO 98 RESPECTIVELY... PAGE 4 - LOTS 92, 93 & 94 CHANGED TO LOTS 91, 92 & 93... DIMENSIONS OF LOTS 112 TO 119 CHANGED AND NEW LOT CREATED... PAGE 5 - LOTS 120 TO 128 INCLUSIVE, CHANGED TO LOTS 119 TO 128 RESPECTIVELY... PAGE 6 - LOTS 129 TO 138 INCLUSIVE, CHANGED TO LOTS 128 TO 137 RESPECTIVELY... PAGE 7 - LOTS 139 TO 148 INCLUSIVE, CHANGED TO LOTS 138 TO 147 RESPECTIVELY... PAGE 8 - LOTS 149 TO 158 INCLUSIVE, CHANGED TO LOTS 148 TO 157 RESPECTIVELY... PAGE 9 - LOTS 159 TO 168 INCLUSIVE, CHANGED TO LOTS 158 TO 167 RESPECTIVELY... PAGE 10 - LOTS 169 TO 178 INCLUSIVE, CHANGED TO LOTS 168 TO 177 RESPECTIVELY... APPROVED: Ralph David Davis 1/29/81 2/5/81 OFFICE OF THE LOS ANGELES COUNTY ENGINEER R.C.E. NO. DATE



Contractor agrees that he shall assume sole and complete responsibility for job site conditions during the course of construction of this Project, including safety of all persons and property; that this requirement shall apply continuously and not be limited to normal working hours; and that the Contractor shall defend, indemnify and hold the Owner and the Engineer harmless from any and all liability, real or alleged, in connection with the performance of work on this Project, excepting for liability arising from the sole negligence of the Owner or the Engineer.

PRIVATE ENGINEERS NOTICE TO CONTRACTORS THE EXISTENCE AND APPROXIMATE LOCATIONS OF UNDERGROUND UTILITIES OR STRUCTURES SHOWN ON THESE PLANS WERE DETERMINED BY A SEARCH OF AVAILABLE PUBLIC RECORDS TO THE BEST OF OUR KNOWLEDGE THERE ARE NO EXISTING UNDERGROUND UTILITIES OR STRUCTURES EXCEPT AS SHOWN ON THESE PLANS. THE CONTRACTOR IS REQUIRED TO TAKE THE PROCAUTIONARY MEASURES TO PROTECT THE UTILITIES OR STRUCTURES SHOWN AND ANY OTHER UTILITIES OR STRUCTURES NOT OF RECORD OR NOT SHOWN ON THESE PLANS. Robert R. Flores R.C.E. No. 11349

NOTE: Lots 80 thru 89 inclusive, served by P.C. 9747 pages 75 & 8A ISSUE NO PERMITS UNTIL P.C. 9747 IS ACCEPTED

REVISION NO. 2 MARCH 19, 1985 - ALL PAGES DUE TO THE ADDITION OF A NEW TRACT UNDER THE PRESENT TRACT, THE TRACT NUMBER WAS REVISED FROM TRACT 32131 TO TRACT NO. 36860 APPROVED: Ralph David Davis 3/19/85 R.C.E. No. 11349 DATE

GENERAL NOTES: DOUBLE SCALE

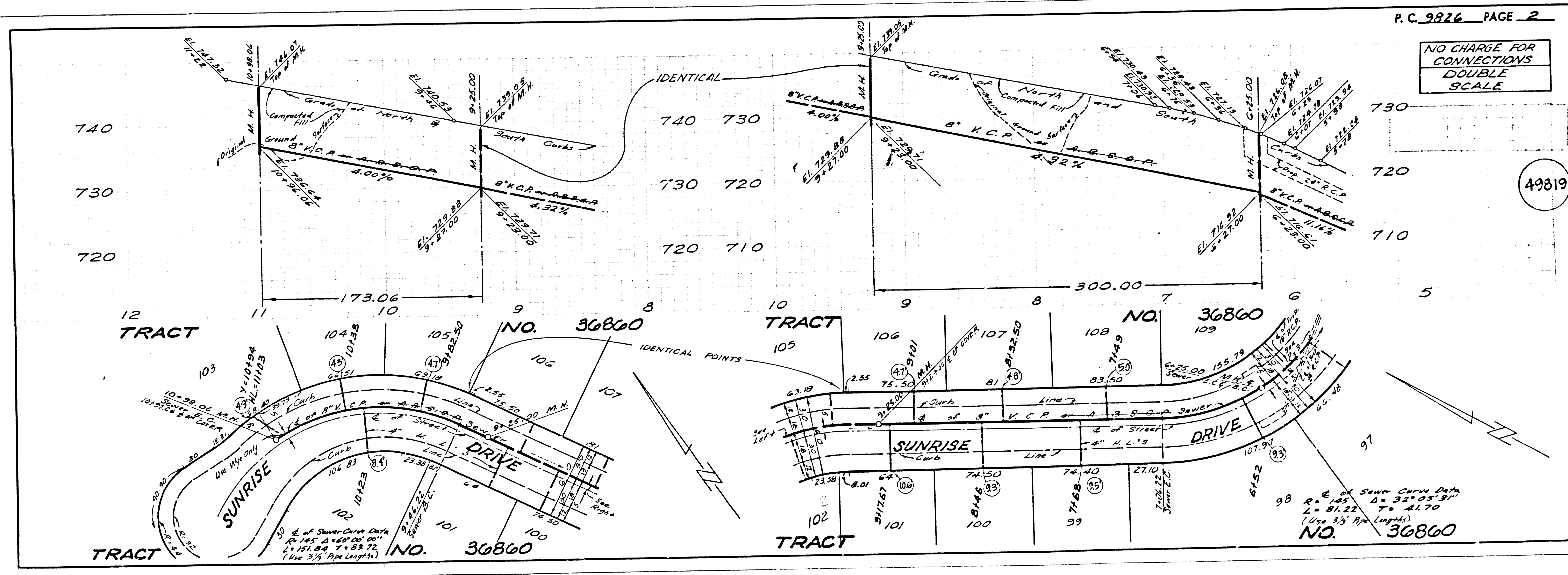
- 1. ELEVATIONS ARE IN FEET ABOVE U.S.C. & G.S. SEA LEVEL DATUM OF 1929.
2. NO REVISIONS SHALL BE MADE IN THESE PLANS WITHOUT THE APPROVAL OF THE COUNTY ENGINEER.
3. NO REPRESENTATIVE OF THE COUNTY ENGINEER WILL SURVEY OR LAY OUT ANY PORTION OF THE WORK.
4. GRADES TO WHICH THIS IMPROVEMENT IS TO BE CONSTRUCTED ARE SHOWN ON PLANS AND PROFILES. GRADE POINTS FOR TOP OF CURBS, CENTER LINE OF STREETS, OR CENTER LINE OF ALLEYS ARE SHOWN BY CIRCLES ON PROFILES. AT ALL POINTS BETWEEN DESIGNATED POINTS THE GRADE SHALL BE ESTABLISHED SO AS TO CONFORM TO A STRAIGHT LINE DRAWN BETWEEN SAID DESIGNATED POINTS.
5. THE PRIVATE ENGINEER SHALL FURNISH THE COUNTY ENGINEER WITH GRADE SHEETS AND STATIONING FOR ALL HOUSE LATERALS AND "T" OR "Y" BRANCHES AND SHALL PROVIDE STAKES FOR THEM AT THEIR PROPER LOCATIONS WITH STATIONING PLAINLY MARKED. ALL HOUSE LATERALS SHALL BE CONSTRUCTED IN A STRAIGHT ALIGNMENT AT RIGHT ANGLES FROM THE MAIN LINE SEWER EXCEPT AS SHOWN ON THE PLANS. HOUSE LATERALS FROM CHIMNEYS SHALL NOT HAVE AN ANGLE OF LESS THAN 45° WITH THE MAIN LINE SEWER. ANY CHANGE IN ALIGNMENT SHALL BE REQUESTED IN WRITING BY THE PRIVATE ENGINEER.
6. THE PRIVATE ENGINEER SHALL FURNISH THE HOUSE LATERAL DEPTH AT THE PROPERTY LINE BELOW THE TOP OF CURB ELEVATION FOR EACH HOUSE LATERAL ON THE GRADE SHEET.
7. BEFORE WORK CAN BE STARTED, THE CONTRACTOR MUST OBTAIN A PERMIT TO EXCAVATE IN COUNTY STREETS FROM THE L.A. COUNTY ROAD DEPT., DISTRICT OFFICE NO. 1, AND PAY A FEE TO THE COUNTY ENGINEER, 201 E. BONITA AVE., SAN DIMAS REGIONAL OFFICE TO COVER THE COST OF CONSTRUCTION INSPECTION AND RECORD PLANS.
8. IF WORK IS TO BE DONE IN A STATE HIGHWAY, A PERMIT MUST BE OBTAINED FROM THE STATE OF CALIFORNIA, DIVISION OF HIGHWAYS, 130 SOUTH STRENGTH STREET, LOS ANGELES, CALIFORNIA.
9. APPROVAL OF THIS PLAN BY THE COUNTY OF LOS ANGELES DOES NOT CONSTITUTE A REPRESENTATION AS TO THE ACCURACY OF THE LOCATION OF OR THE EXISTENCE OR NON-EXISTENCE OF ANY UNDERGROUND UTILITY PIPE, OR STRUCTURE WITHIN THE LIMITS OF THIS PROJECT. THIS NOTE APPLIES TO ALL PAGES.
10. REFER TO SECTION 710-4.1 OF THE STANDARD SPECIFICATIONS, REGARDING SAFETY ORDERS.
11. PERMITS FOR THE ISSUANCE OF THE REQUIRED DOUBLE CONSTRUCTION PERMITS BY THE COUNTY ENGINEER, THE CONTRACTOR SHALL OBTAIN A PERMIT TO RECOVER FROM THE STATE AND CALIFORNIA DEPARTMENT OF INDUSTRIAL RELATIONS, DIVISION OF INDUSTRIAL SAFETY, AND SHALL FILE A CERTIFICATE OF WORKERS COMPENSATION INSURANCE WITH THE COUNTY ENGINEER.

CONSTRUCTION NOTES:

- 1. WORK SHALL BE CONSTRUCTED ACCORDING TO THE STANDARD SPECIFICATIONS FOR PUBLIC WORKS CONSTRUCTION (1979 EDITION) AND COUNTY ENGINEER SPECIAL PROVISIONS FOR THE CONSTRUCTION OF SANITARY SEWERS DATED SEPTEMBER 21, 1984 AND SHALL BE PROSECUTED ONLY IN THE PRESENCE OF THE COUNTY ENGINEER.
2. THE CONTRACTOR SHALL NOTIFY THE ENVIRONMENTAL DEVELOPMENT DIV. PERMITS 212-128-2126, AT LEAST TWENTY-FOUR HOURS BEFORE STARTING ANY WORK UNDER THIS CONTRACT.
3. HOUSE LATERALS TO BE CONSTRUCTED WITH INVERTS AT PROPERTY LINE 4 FEET BELOW CURB GRADE EXCEPT AS NOTED.
4. IF THE CONTRACTOR MAY BE USED FOR CONNECTIONS TO MAINLINE SEWERS EXCEPT AS NOTED, IF V.C.P. IS USED, 18" PIPE BRANCHES ONLY MAY BE USED FOR CONNECTIONS TO MAINLINE SEWERS, 18" IN 12' & 24" IN 24' SPANS.
5. ALL TRENCHES SHALL BE SET BACK MANHOLE TO 5' FROM THE PROPERTY LINE UNLESS OTHERWISE NOTED.
6. PROVIDE STAKES ON THE PROPERTY LINE OR PROPERTY LINES PRODUCED AT RIGHT ANGLES TO THE SEWER LINE AT THE CENTER LINE OF EACH MANHOLE.
7. MANHOLES FOR UNIMPROVED RIGHTS OF WAY TO BE SIX INCHES ABOVE FINISHED GRADE.
8. INTERFERED CLAY PIPE JOINTS SHALL BE TYPE "D", "F", OR "G" PER STANDARD SPECIFICATIONS SECTION 208-2.
9. IF A POWER POLE IS WITHIN THREE FEET OF THE SEWER, THE SEWER SHALL BE ENCASED, PER 5.23, CASE II, TWO FEET ON EACH SIDE FROM THE POINT OF INTERFERENCE.
10. IF DURING THE COURSE OF CONSTRUCTION IT IS DETERMINED THAT THERE IS LESS THAN FOUR FEET OF COVER OVER THE TOP OF A MAIN LINE OR HOUSE LATERAL V.C.P. PIPE WHICH IS NOT INDICATED ON THE PLANS, THE PIPE SHALL BE ENCASED PER 5.23, CASE II UNLESS OTHERWISE APPROVED BY THE COUNTY ENGINEER.
11. ALL JOINTS BETWEEN CAST IRON PIPE AND VITRIFIED CLAY PIPE SHALL BE MADE WITH A RUBBER SLEEVE JOINT, TYPE "C" OR "D".
12. WITH EXCEPT AS NOTED, ALL TRENCHES SHALL BE CONSTRUCTED IN ACCORDANCE WITH APPROVED FITTINGS.
13. TRENCHES SHALL BE TESTED FOR LEAKAGE PER SECTION 208-7 OF THE STANDARD SPECIFICATIONS AND SPECIAL PROVISIONS.
14. RESURFACE ALL TRENCHES WITHIN PAVED AREAS TO MEET L.A. COUNTY ROAD DEPT. OR CALIFORNIA STATE HIGHWAY REQUIREMENTS IN ACCORDANCE WITH PERMITS.
15. FULL COMPLIANCE WITH SECTION 304-1.8 OF THE SPECIAL PROVISIONS WILL BE REQUIRED FOR BACKFILL IN STREETS. CERTIFICATION OF BACKFILL COMPACTION AND SAND TIGHTENING BY A QUALIFIED, REGISTERED TESTING LABORATORY SHALL BE PROVIDED BY THE CONTRACTOR PRIOR TO THE ISSUANCE OF A CERTIFICATE OF PARTIAL ACCEPTANCE.
16. FULL COMPLIANCE WITH PART 11 OF THE SPECIAL PROVISIONS IS REQUIRED FOR THE INSTALLATION OF A.B.S. COMPOSITE PIPE.
17. MANHOLE WATERS STOP GASKETS AND CLAMPS ARE REQUIRED FOR THE CONNECTION OF A.B.S. COMPOSITE PIPE TO MANHOLE STRUCTURES.
18. A.B.S. SOLID WALL PIPE MUST BE USED FOR VIEWS AND HOUSE LATERAL CONNECTIONS TO A.B.S. COMPOSITE MAINLINE SEWER PIPE.

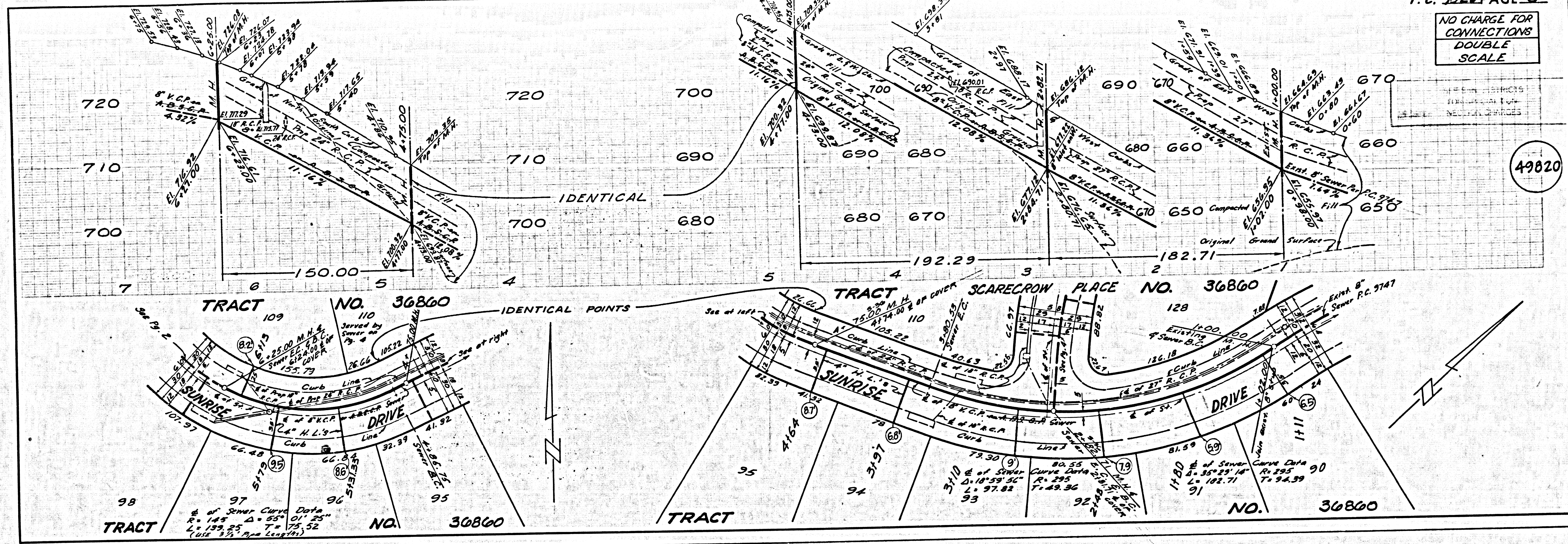
LEGEND
MINIMUM PUBLIC SAFETY REQUIREMENTS . . . . . \$1
BRICK MANHOLE . . . . . \$2
STANDARD MANHOLE STEP . . . . . \$10
BEDDING FOR SEWER PIPE . . . . . \$20
CRADLING AND ENCASMENT . . . . . \$20
WYE OR T SUPPORT . . . . . \$30
ALLOWABLE TRENCH WIDTHS . . . . . \$70
LOCKING MANHOLE FRAME AND COVER . . . . . \$30
NON-REINFORCED PRECAST CONCRETE MANHOLE . . . . . \$30
BEDDING REQUIREMENT FOR PLASTIC PIPE . . . . . \$-31A

COUNTY OF LOS ANGELES, CALIFORNIA
STEPHEN J. KOONCE, COUNTY ENGINEER WALTER E. GARRISON, CHIEF ENGINEER
APPROVED: [Signature] 5/15/80 APPROVED: [Signature] 5/14/80
SAN DIMAS REGIONAL ENGINEER IDATED OFFICE ENGINEER
CHECKED: Ralph David Davis 5/15/80
REG. C.E. NO. 11349
LA PUENTE - BLDG. DIST. 2-00



NO CHARGE FOR CONNECTIONS DOUBLE SCALE

49820



5882.29

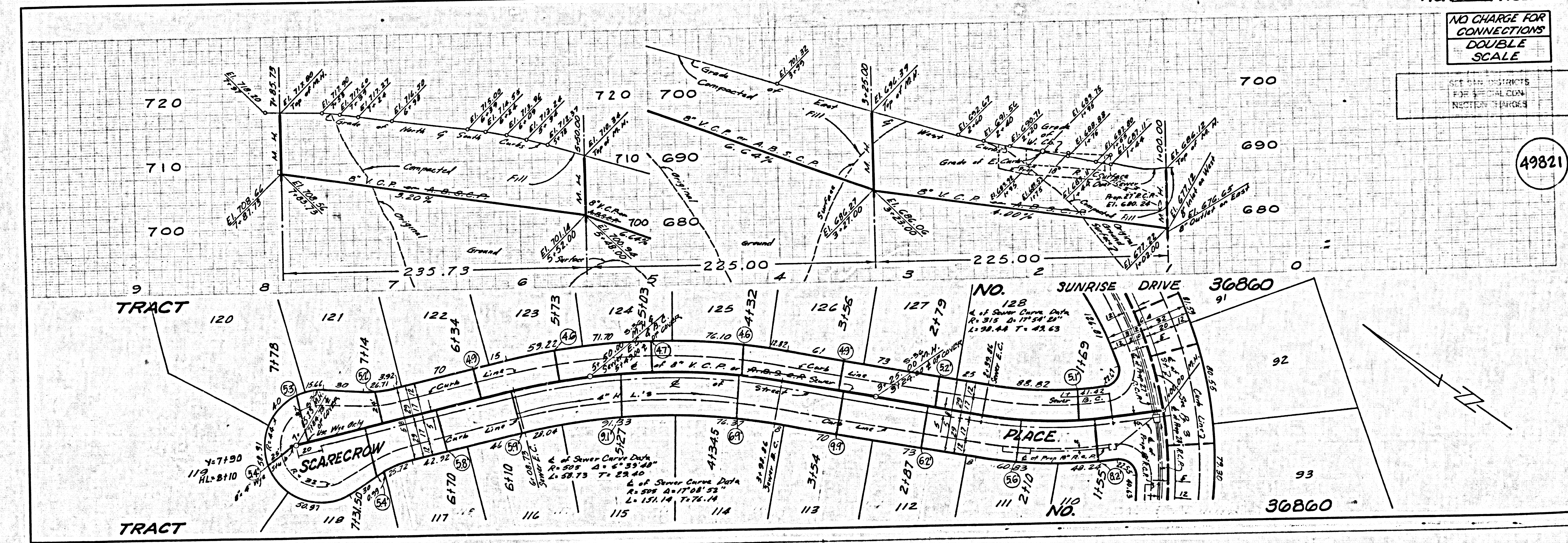
0882E

0N

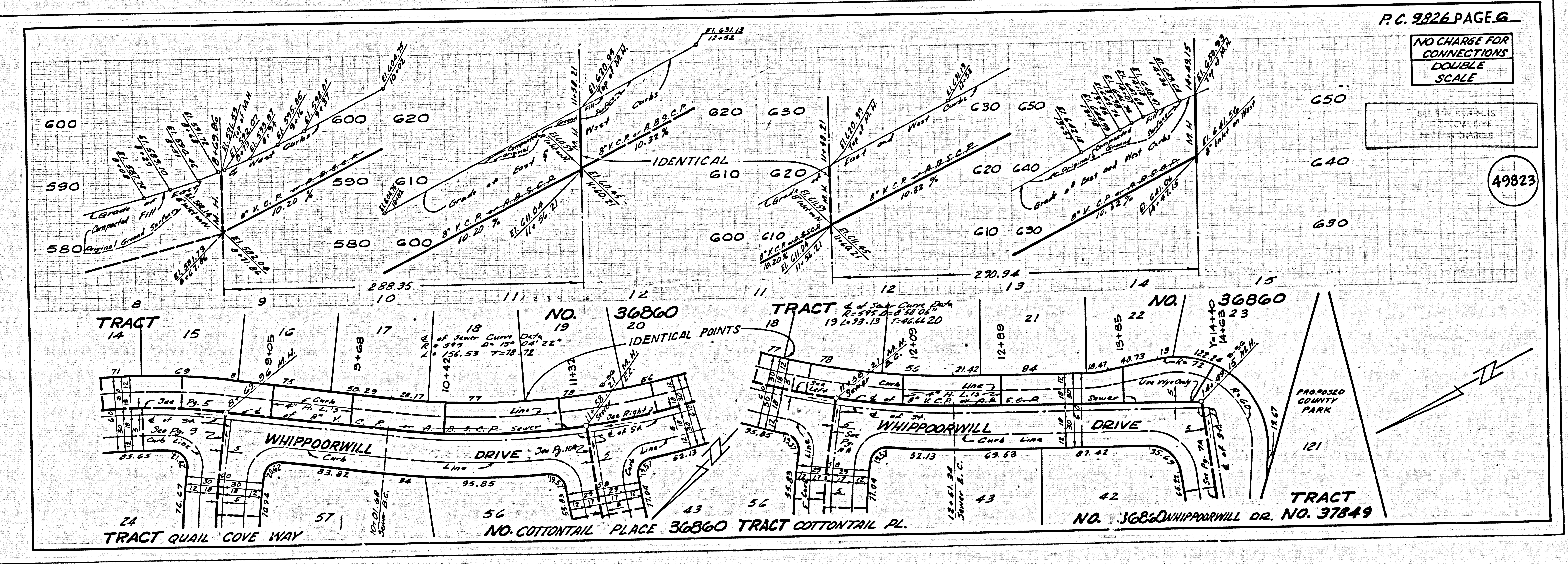
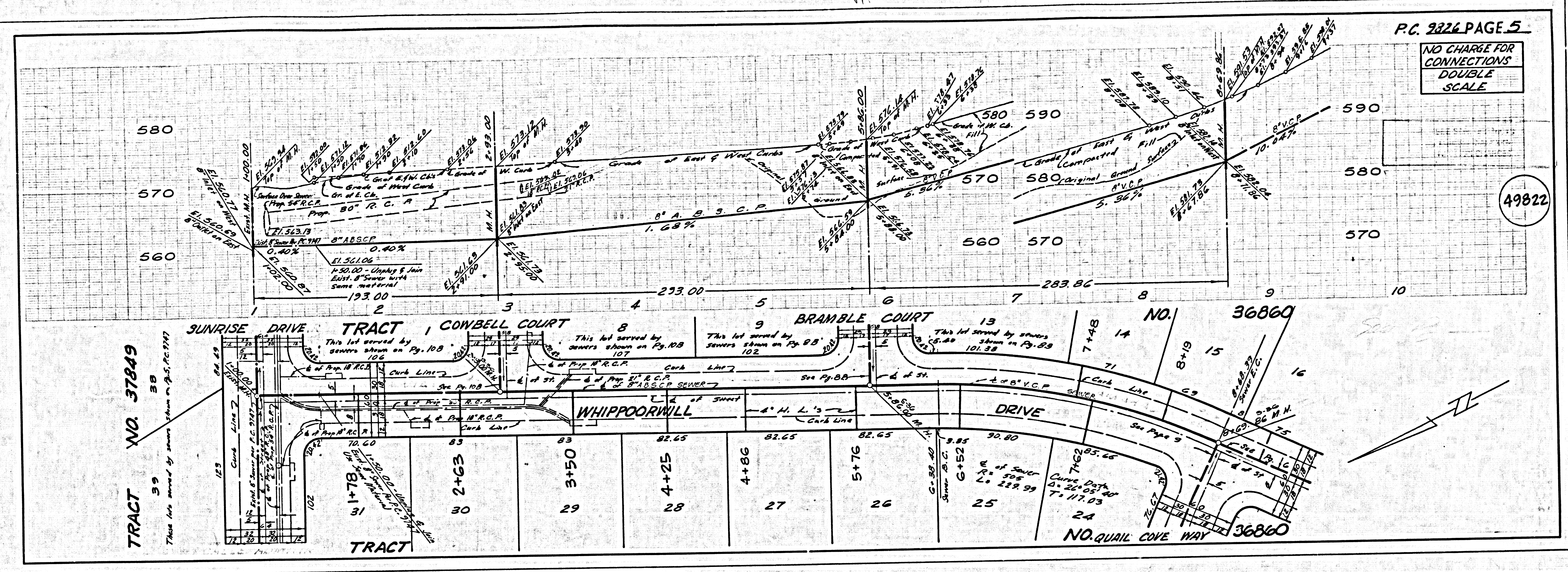
TRACT

NO CHARGE FOR CONNECTIONS DOUBLE SCALE

49821



PA 100-2493

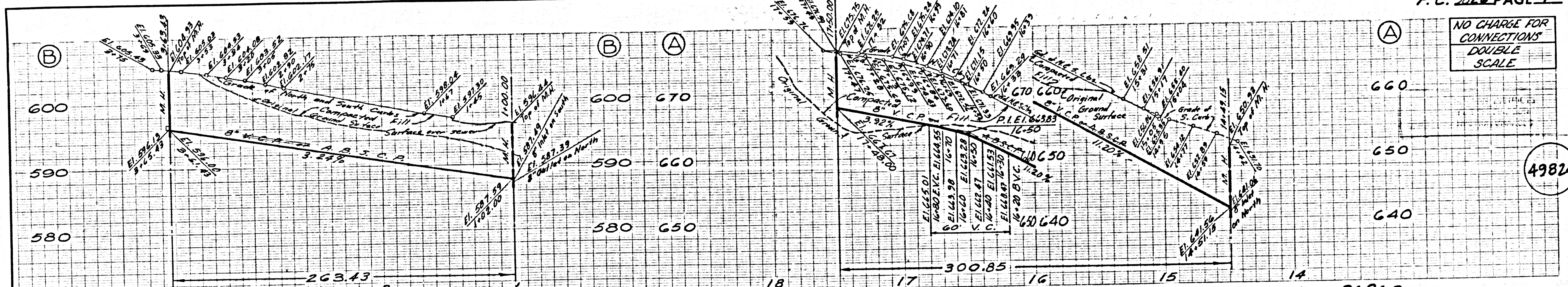


5582 SA

0283E

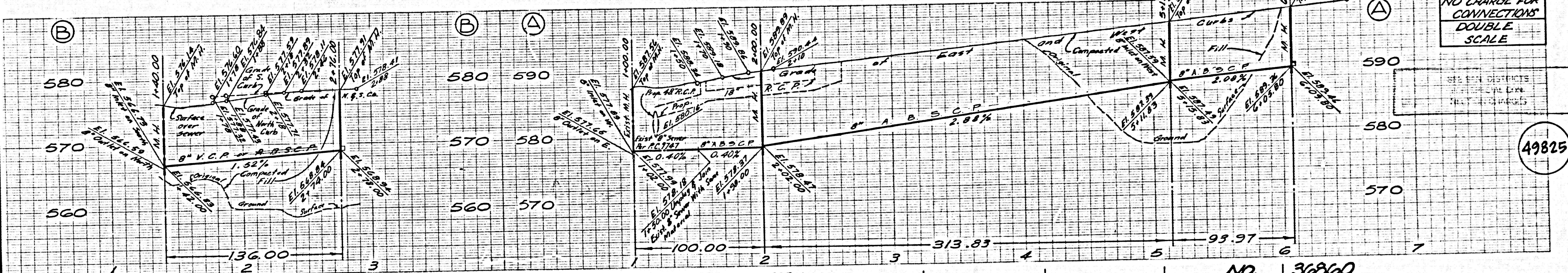
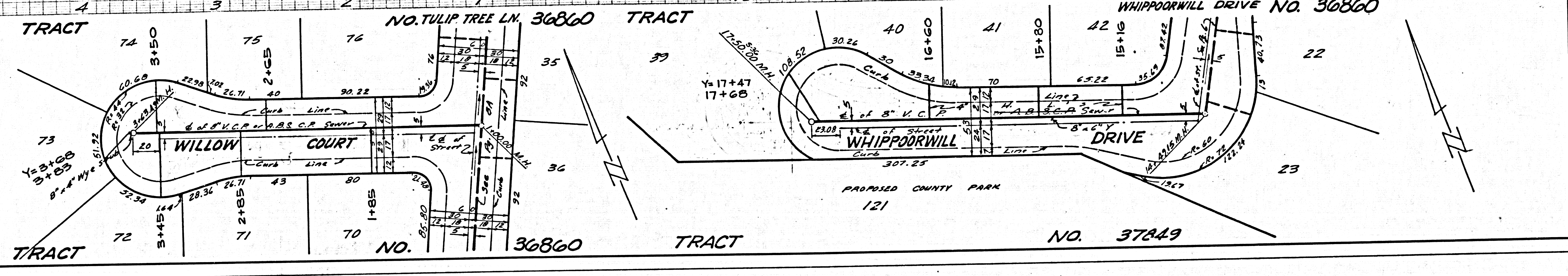
0N

13841



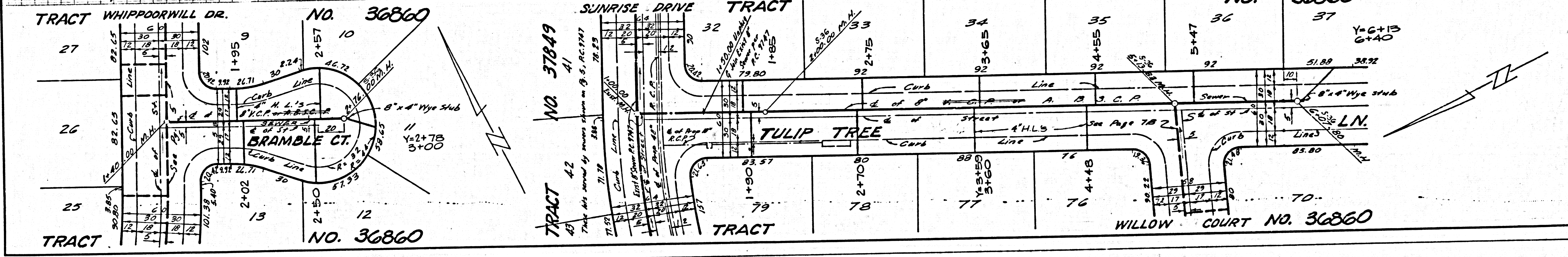
NO CHARGE FOR CONNECTIONS DOUBLE SCALE

49824

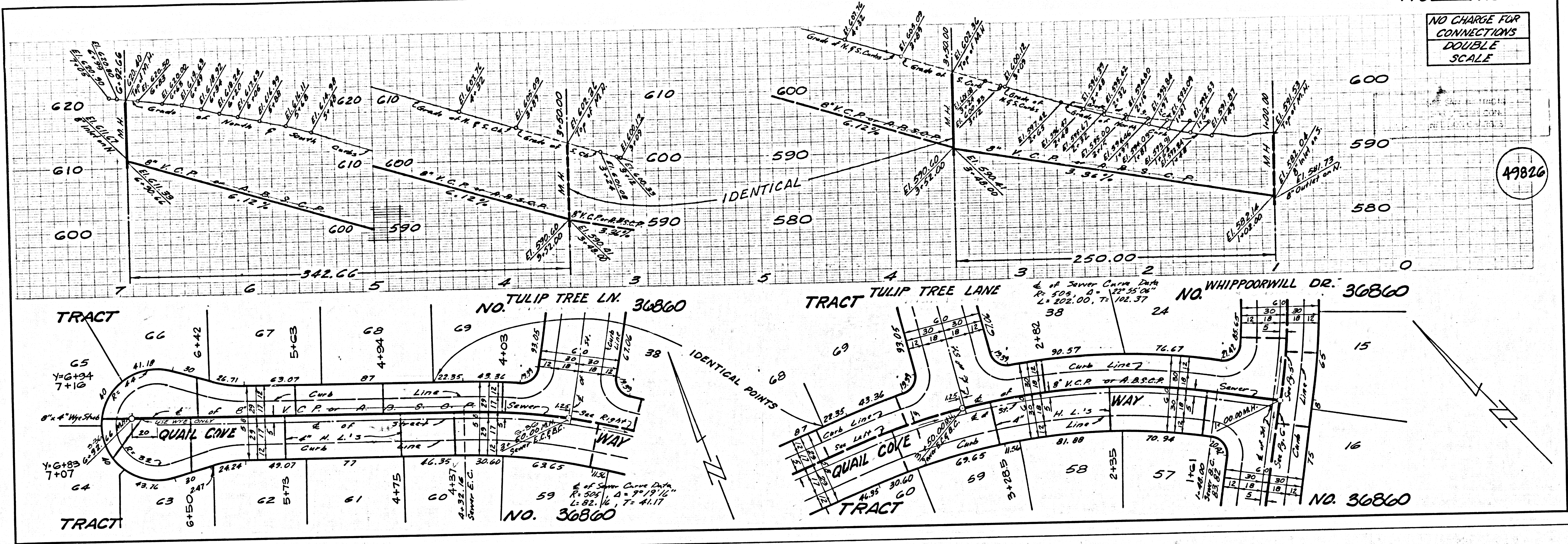


NO CHARGE FOR CONNECTIONS DOUBLE SCALE

49825



NO CHARGE FOR CONNECTIONS  
DOUBLE SCALE



NO CHARGE FOR CONNECTIONS  
DOUBLE SCALE

