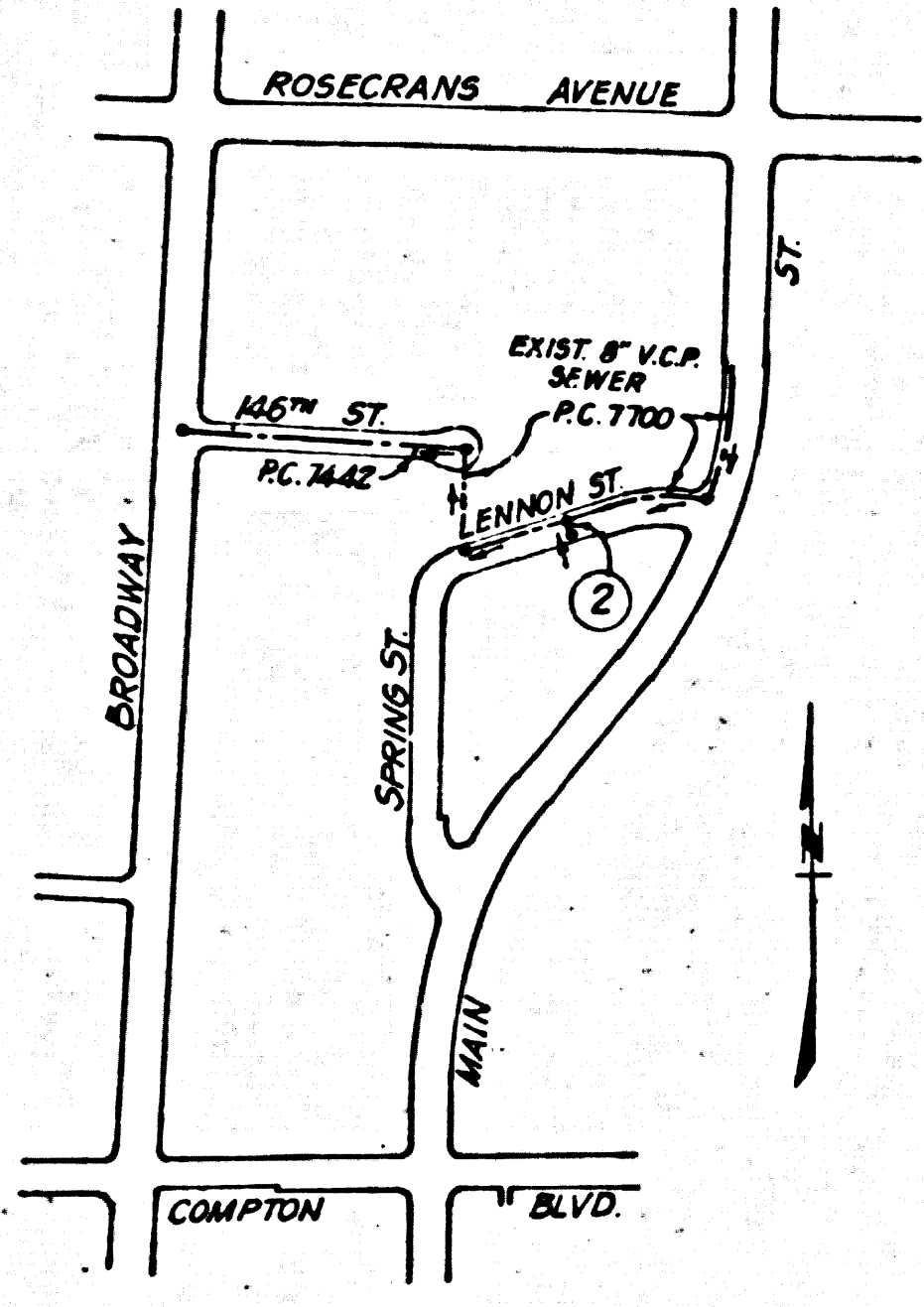


B.M. CY 3982 — ELEV. 70.644  
 1 1/4 E. EDGE CONC. WK @ NE COR. BLDG. N° 15105  
 BROADWAY @ SW COR. COMPTON BLVD & BROAD-  
 WAY 40' S & 88' W @ INT (1' 5/8 BK OF WK 6 IN DN)  
 GARDENA QUAD. 1975



INDEX MAP  
 SCALE: 1" = 600'  
 P.C. 9829

NO CONNECTION FOR THE DISPOSAL OF INDUSTRIAL WASTES  
 SHALL BE MADE TO SEWER LINES OR THESE WASTES SHALL  
 A PERMIT FOR INDUSTRIAL WASTEWATER DISCHARGE HAS BEEN  
 ISSUED BY THE SANITATION DISTRICTS FOR SAID CONNECTION.

BEFORE BREAKING UP ON CONSTRUCTION OF A COUNTY  
 SANITATION DISTRICT SEWER AND PRIOR TO FINAL  
 ACCEPTANCE OF THE PROJECT, SANITATION DISTRICT  
 INSPECTOR SHALL BE NOTIFIED BY PERMITS  
 SO THAT REQUIRED INSPECTION CAN BE MADE.

**NOTICE TO CONTRACTOR:**  
 THE EXISTENCE AND LOCATION OF ANY UNDERGROUND  
 UTILITY PIPES OR STRUCTURES SHOWN ON THESE PLANS  
 ARE OBTAINED BY A SEARCH OF THE AVAILABLE RECORDS.  
 TO THE BEST OF MY KNOWLEDGE THERE ARE NO EXISTING  
 UTILITIES EXCEPT AS SHOWN ON THESE PLANS.  
 THE CONTRACTOR IS REQUIRED TO TAKE DUE  
 PRECAUTIONARY MEASURES TO PROTECT THE UTILITY  
 LINES SHOWN AND ANY OTHER LINES NOT OF RECORD  
 OR NOT SHOWN ON THESE PLANS.

*Jerome R. Luber*  
 JEROME R. LUBER R.C.E. 24871

**GENERAL NOTES:**

- ELEVATIONS ARE IN FEET ABOVE U.S.C. & G.S. SEA LEVEL DATUM OF 1929.
- NO REVISIONS SHALL BE MADE IN THESE PLANS WITHOUT THE APPROVAL OF THE COUNTY ENGINEER.
- NO REPRESENTATIVE OF THE COUNTY ENGINEER WILL SURVEY OR LAY OUT ANY PORTION OF THE WORK.
- GRADES TO WHICH THIS IMPROVEMENT IS TO BE CONSTRUCTED ARE SHOWN ON PLANS AND PROFILES. GRADE POINTS FOR TOP OF CURBS, CENTER LINE OF STREETS, OR CENTER LINE OF ALLEYS ARE SHOWN BY CIRCLES ON PROFILES. AT ALL POINTS BETWEEN DESIGNATED POINTS THE GRADE SHALL BE ESTABLISHED AS TO CONFORM TO A STRAIGHT LINE EXCEPT BETWEEN SAID DESIGNATED POINTS.
- THE PRIVATE ENGINEER SHALL FURNISH THE COUNTY ENGINEER WITH GRADE SHEETS AND STATIONING FOR ALL HOUSE LATERALS AND "T" OR "Y" BRANCHES AND SHALL FURNISH GRADES FOR THEM AT THEIR PROPER LOCATIONS WITH STATIONING PLAINLY MARKED. ALL HOUSE LATERALS SHALL BE CONSTRUCTED IN A STRAIGHT ALIGNMENT AT RIGHT ANGLES FROM THE MAIN LINE SEWER EXCEPT AS SHOWN ON THE PLANS. HOUSE LATERALS FROM CHIMNEYS SHALL NOT HAVE AN ANGLE OF LESS THAN 45° WITH THE MAIN LINE SEWER. ANY CHANGE IN ALIGNMENT SHALL BE REQUESTED BY WRITING BY THE PRIVATE ENGINEER.
- THE PRIVATE ENGINEER SHALL FURNISH THE HOUSE LATERAL DEPTH AT THE PROPERTY LINE BELOW THE TOP OF CURB ELEVATION FOR EACH HOUSE LATERAL ON THE GRADE SHEET.
- BEFORE WORK CAN BE STARTED, THE CONTRACTOR MUST OBTAIN A PERMIT TO EXCAVATE IN COUNTY STREETS FROM THE L.A. COUNTY ROAD DEPT., DISTRICT OFFICE NO. 3, AND PAY A FEE TO THE COUNTY ENGINEER, 550 S. VERMONT AVE., LOS ANGELES, TO COVER THE COST OF CONSTRUCTION INSPECTION AND RECORD PLANS.
- IF WORK IS TO BE DONE IN A STATE HIGHWAY, A PERMIT MUST BE OBTAINED FROM THE STATE OF CALIFORNIA, DIVISION OF HIGHWAYS, 120 SOUTH SPRING STREET, LOS ANGELES, CALIFORNIA.
- APPROVAL OF THIS PLAN BY THE COUNTY OF LOS ANGELES DOES NOT CONSTITUTE A REPRESENTATION AS TO THE ACCURACY OF THE LOCATION OF OR THE EXISTENCE OR NON-EXISTENCE OF ANY UNDERGROUND UTILITY LINE, OR STRUCTURE WITHIN THE LIMITS OF THIS PROJECT. THIS NOTE APPLIES TO ALL PAGES.
- REFER TO SECTION 7-18.4.3 OF THE STANDARD SPECIFICATIONS, REGARDING SAFETY ORDERS.
- PRIOR TO THE ISSUANCE OF THE REQUIRED SEWER CONSTRUCTION PERMIT, THE CONTRACTOR SHALL OBTAIN AND FILE WITH THE COUNTY ENGINEER COPIES OF A PERMIT TO EXCAVATE IN COUNTY STREETS FROM THE LOS ANGELES COUNTY ROAD DEPARTMENT, A PERMIT FOR EXCAVATIONS AND TRENCHES FROM THE STATE OF CALIFORNIA, DIVISION OF INDUSTRIAL SAFETY AND A CERTIFICATE OF WORKERS COMPENSATION INSURANCE WITH THE DEPARTMENT OF COUNTY ENGINEER, 550 S. VERMONT AVE., LOS ANGELES, CALIFORNIA 90020, NAMED AS THE CERTIFICATE HOLDER TO BE NOTIFIED 30 DAYS PRIOR TO CANCELLATION OF POLICY.

**CONSTRUCTION NOTES:**

- WORK SHALL BE CONSTRUCTED ACCORDING TO THE STANDARD SPECIFICATIONS FOR PUBLIC WORKS CONSTRUCTION (1978 EDITION) WITH SUPPLEMENTARY AND COUNTY ENGINEER SPECIAL PROVISIONS FOR THE CONSTRUCTION OF SANITARY SEWERS DATED SEPTEMBER 1978 AND SHALL BE PROSECUTED ONLY IN THE PRESENCE OF THE COUNTY ENGINEER.
- THE CONTRACTOR SHALL NOTIFY THE BUREAU OF PUBLIC WORKS BY TELEPHONE, 756-7108, AT LEAST TWENTY-FOUR HOURS BEFORE STARTING ANY WORK UNDER THIS CONTRACT.
- HOUSE LATERALS TO BE CONSTRUCTED WITH INVERTS AT PROPERTY LINE 4 FEET BELOW CURB GRADE EXCEPT AS NOTED.
- WYE OR TE BRANCHES MAY BE USED FOR CONNECTIONS TO MAINLINE SEWERS EXCEPT AS NOTED.
- ALL STRUCTURES SHALL BE EITHER BRICK MANHOLES PER 8-2 OR PRECAST CONCRETE MANHOLES PER 8-2, EXCEPT AS NOTED.
- PROVIDE STALLS ON THE PROPERTY LINE OR PROPERTY LINES PRODUCED AT RIGHT ANGLES TO THE SEWER LINE AT THE CENTER LINE OF EACH MANHOLE.
- MANHOLES TOPS IN UNIMPROVED RIGHTS OF WAY TO BE 24 INCHES ABOVE FINISHED GRADE.
- VITRIFIED CLAY PIPE JOINTS SHALL BE TYPE "B", "P", OR "R" PER STANDARD SPECIFICATIONS SECTION 808-2.
- IF A POWER POLE IS WITHIN THREE FEET OF THE SEWER, THE SEWER SHALL BE ENCASED, PER 8-2L, CASE II, TWO FEET ON EACH SIDE FROM THE POINT OF INTERFERENCE.
- IF DURING THE COURSE OF CONSTRUCTION IT IS DETERMINED THAT THERE IS LESS THAN FOUR FEET OF COVER OVER THE TOP OF A MAIN LINE OR HOUSE LATERAL V.C.P. SEWER WHICH IS NOT INDICATED ON THE PLANS, THE PIPE SHALL BE ENCASED PER 8-2L, CASE II UNLESS OTHERWISE APPROVED BY THE COUNTY ENGINEER.
- ALL JOINTS BETWEEN CLAY PIPE AND VITRIFIED CLAY PIPE SHALL BE MADE WITH A RUBBER SLEEVE JOINT, TYPE "C" OR "D", WITH BURNING IF NECESSARY PER STANDARD SPECIFICATIONS, SECTION 808-4.
- SEWERS TO BE INSTALLED FOR SEWERAGE PER SECTION 808-1.4 OF THE STANDARD SPECIFICATIONS AND SPECIAL PROVISIONS.
- REINFORCE ALL TRENCHES WITHIN PAVED AREAS TO MEET L.A. COUNTY ROAD DEPT. OR CALIFORNIA STATE HIGHWAY REQUIREMENTS IN ACCORDANCE WITH PERMITS.
- FULL COMPLIANCE WITH SECTION 808-1.8.B OF THE SPECIAL PROVISIONS WILL BE REQUIRED FOR BACKFILL IN STREETS. CERTIFICATION OF BACKFILL COMPACTION AND SAND EQUIVALENTS BY A QUALIFIED, REGISTERED TESTING LABORATORY SHALL BE PROVIDED BY THE PERMITTEE PRIOR TO THE ISSUANCE OF A CERTIFICATE OF PARTIAL ACCEPTANCE.

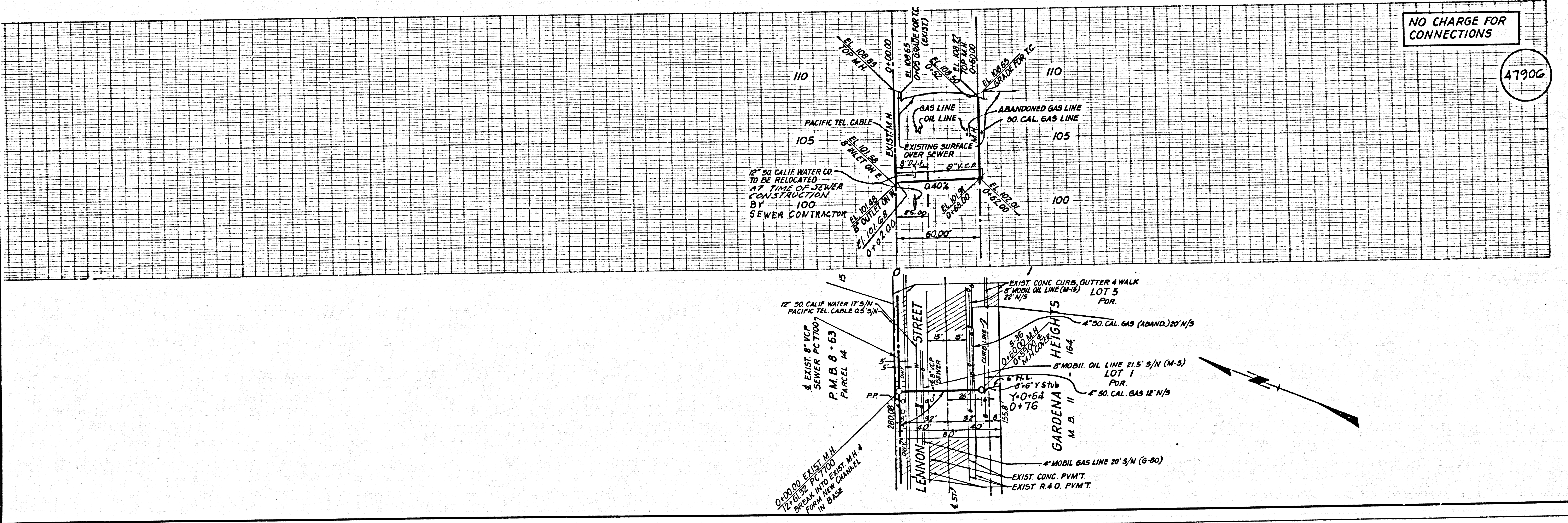
PROFILE, ALIGNMENT AND GRADE OF  
**SANITARY SEWERS** PAGE 1  
 TO BE CONSTRUCTED IN  
**LENNON STREET**  
 PRIVATE CONTRACT NO. 9829

W.S. 26  
 1 SHEET, 2 PAGES  
 SCALE: VERT. 1" = 4'  
 HORIZ. 1" = 40'  
 PREPARED IN THE OFFICES OF  
**KUGLER SURVEYING & MAPPING**  
 227 W. CARSON STREET, CARSON, CA 90745  
 BY: *James R. Taylor*  
 REG. C. E. No. 24871

THE FOLLOWING LATEST REVISED STANDARD PLANS ON FILE IN THE OFFICE OF THE COUNTY ENGINEER SHALL APPLY IN THE CONSTRUCTION OF THIS PROJECT.

LEGEND	5-3
MINIMUM PUBLIC SAFETY REQUIREMENTS	5-3
STANDARD MANHOLE TOP	5-37
REINFORCING FOR SEWER PIPE	5-37
CRACKING AND ENCASEMENT	5-38
WYE OR TE SUPPORT	5-38
ALLOWABLE TRENCH WIDTHS	5-38
LOCKING MANHOLE FRAME AND COVER	5-38
NON-REINFORCED PRECAST CONCRETE MANHOLE	5-38

COUNTY OF LOS ANGELES, CALIFORNIA  
 STEPHEN J. KOONCE, COUNTY ENGINEER WALTER E. GARRISON, CHIEF ENGINEER  
 APPROVED *Martin L. Murphy* 6-13-80 APPROVED *Franklin* 7/1/80  
 DATE DATE OFFICE ENGINEER  
 CHECKED *Ralph David Hunt* 6/11/80  
 DATE  
 REG. C.E. NO. 16473  
 LENNOX BLDG. DIST. 7



NO CHARGE FOR CONNECTIONS

47906