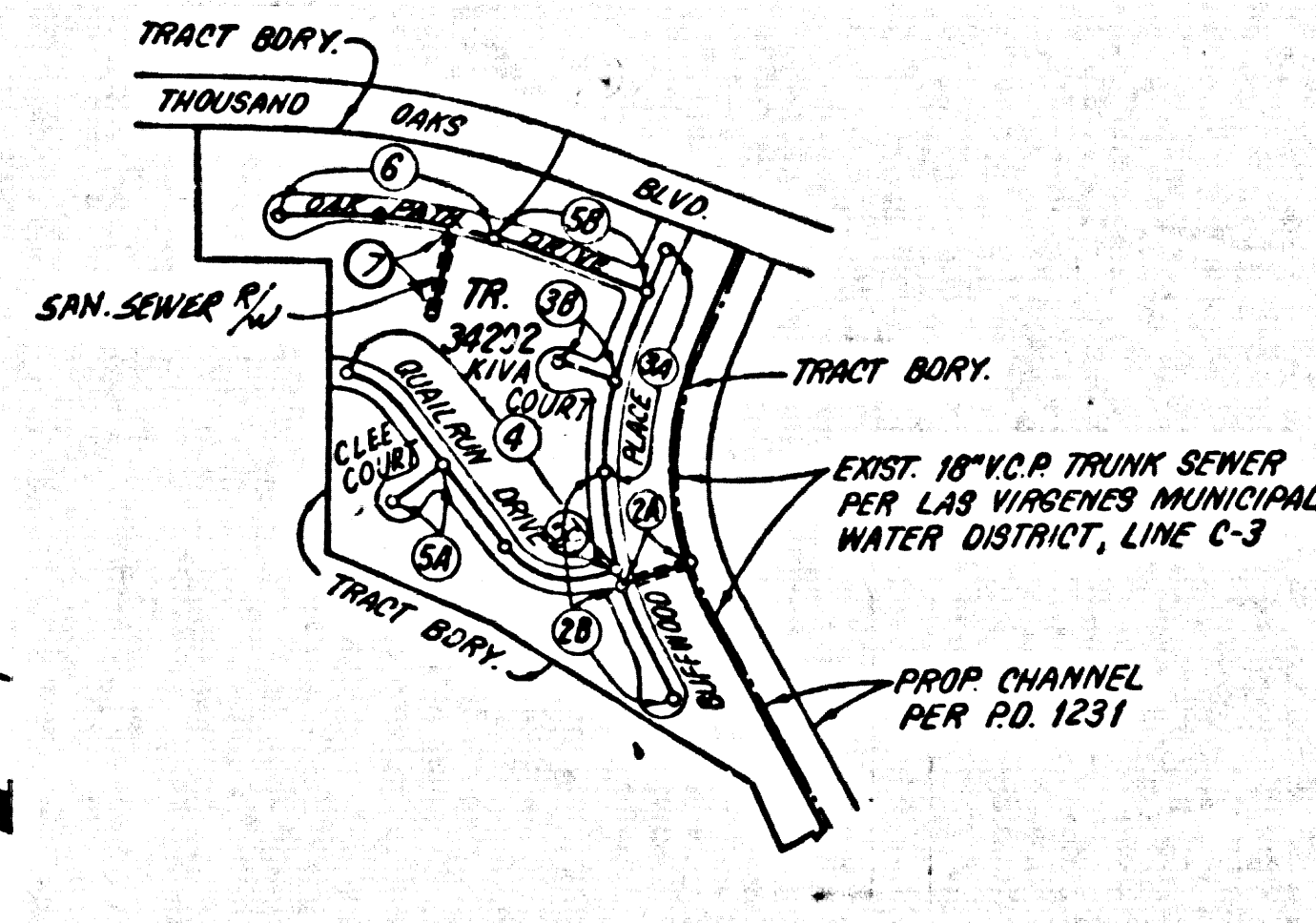


B.M. BY 9006 ELEV. 882.375
 R.O.B. TAG IN S. CO. 2 FT. E/O B.C.R.
 AT S.E. COR. KANAN RD. & THOUSAND
 OAKS BLVD. 40 FT. S. & 75 FT. E/O & INT.
 MALIBU QUAD. 19 72



INDEX MAP
 SCALE: 1"=600'
 P.C. 9831
 TR. NO. 34292

NOTE:
 NUMBERS IN CIRCLES INDICATE PAGE NUMBER

CONSTRUCTION NOTES CONT'D.

16. FULL COMPLIANCE WITH PART 33 OF THE SPECIAL PROVISIONS IS REQUIRED FOR THE INSTALLATION OF A.B.S. CONDUIT PIPE.
17. MANHOLE WATERSHED SHALL BE DETERMINED AND MARKED FOR THE COLLECTION OF A.B.S. CONDUIT PIPE IN MANHOLE APPROVALS.
18. A.B.S. SOLID WALL PIPE MUST BE USED FOR WYE & BRANCH CONNECTIONS TO A.B.S. CONDUIT MANHOLE JUNCTIONS.
19. A.B.S. CONDUIT PIPE SHALL BE INSTALLED IN CONFORMANCE WITH THE TABLE IN SECTION 8-2.1 OF PART 33 OF THE SPECIAL PROVISIONS.
20. 3" DRAINAGE COLLECTION CONDUITS SHOULD BE USED TO ACCOMMODATE RADII OF CURVATURE LESS THAN 250'.

GENERAL NOTES: DOUBLE SCALE

1. REVISIONS ARE IN PINK AND U.S.C. & G.S. SEA LEVEL DATUM OF 1929.
2. NO REVISIONS SHALL BE MADE IN THESE PLANS WITHOUT THE APPROVAL OF THE COUNTY ENGINEER.
3. NO REPRESENTATIVE OF THE COUNTY ENGINEER WILL SURVEY OR LAY OUT ANY PORTION OF THE WORK.
4. GRADES TO WHICH THIS IMPROVEMENT IS TO BE CONSTRUCTED ARE SHOWN ON PLANS AND PROFILES. GRADE POINTS FOR TOP OF CURB, CENTER LINE OF STREETS, OR CENTER LINE OF ALLEYS ARE SHOWN BY CIRCLES ON PROFILES. AT ALL POINTS BETWEEN DESIGNATED POINTS THE GRADE SHALL BE ESTABLISHED SO AS TO CONFORM TO A STRAIGHT LINE DRAWN BETWEEN SAID DESIGNATED POINTS.
5. THE PRIVATE ENGINEER SHALL FURNISH THE COUNTY ENGINEER WITH GRADE SHEETS AND STATIONING FOR ALL HOUSE LATERALS AND "T" OR "Y" BRANCHES AND SHALL PROVIDE STAKES FOR THEM AT THEIR PROPER LOCATIONS WITH STATIONING PLAINLY MARKED. ALL HOUSE LATERALS SHALL BE CONSTRUCTED IN A STRAIGHT ALIGNMENT AT RIGHT ANGLES FROM THE MAIN LINE SEWER EXCEPT AND SHOWN ON THE PLANS. HOUSE LATERALS FROM CHIMNEYS SHALL NOT HAVE AN ANGLE OF LESS THAN 45° WITH THE MAIN LINE SEWER. ANY CHANGE IN ALIGNMENT SHALL BE REQUESTED IN WRITING BY THE PRIVATE ENGINEER.
6. THE PRIVATE ENGINEER SHALL FURNISH THE HOUSE LATERAL DEPTH AT THE PROPERTY LINE BELOW THE TOP OF CURB ELEVATION FOR EACH HOUSE LATERAL ON THE GRADE SHEET.
7. BEFORE WORK CAN BE STARTED, THE CONTRACTOR MUST OBTAIN A PERMIT TO EXCAVATE IN COUNTY STREETS FROM THE L.A. COUNTY ROAD DEPT., DESIGNATED BY THE ROAD DEPT. AND PAY A FEE TO THE COUNTY ENGINEER, 550 S. VERMONT AVE., Rm. 602 REGIONAL OFFICE TO COVER THE COST OF ADMINISTRATION INSPECTION AND RECORD PLANS.
8. IF WORK IS TO BE DONE IN A STATE HIGHWAY, A PERMIT MUST BE OBTAINED FROM THE STATE OF CALIFORNIA, DIVISION OF HIGHWAYS, 120 SOUTH SPRING STREET, LOS ANGELES, CALIFORNIA. CALIFORNIA DOES NOT CONSTITUTE A REAFFIRMATION AS TO THE ACCURACY OF THE LOCATION OF OR THE EXISTENCE OR NON-EXISTENCE OF ANY UNDERGROUND UTILITY PIPE, OR STRUCTURE WITHIN THE LIMITS OF THIS PROJECT. THIS NOTE APPLIES TO ALL PAGES.
9. REFER TO SECTION 8-2.1 OF THE STANDARD SPECIFICATIONS REGARDING SAFETY CLOSURES.
10. BEFORE THE ISSUANCE OF THE REG. WBS SEWER CONSTRUCTION PERMIT, THE CONTRACTOR SHALL OBTAIN AND FILE WITH THE COUNTY ENGINEER COPIES OF A PERMIT TO EXCAVATE IN COUNTY STREETS FROM THE LOS ANGELES COUNTY ROAD DEPARTMENT, A PERMIT FOR EXCAVATIONS AND TRENCHES FROM THE STATE OF CALIFORNIA, DIVISION OF INDUSTRIAL SAFETY AND A CERTIFICATE OF WORKER'S COMPENSATION INSURANCE WITH THE DEPARTMENT OF COUNTY ENGINEER, 550 SOUTH VERMONT, RM 602, LOS ANGELES, CALIFORNIA 90020, NAMED AS THE CERTIFICATED HOLDER TO BE NOTIFIED 30 DAYS PRIOR TO CANCELLATION OF POLICY.

CONSTRUCTION NOTES:

1. WORK SHALL BE CONSTRUCTED ACCORDING TO THE STANDARD SPECIFICATIONS FOR PUBLIC WORKS CONSTRUCTION (1978 EDITION) AND COUNTY ENGINEER SPECIAL PROVISIONS FOR THE CONSTRUCTION OF SANITARY SEWERS DATED METZ. 11.18.78 AND SHALL BE PROSECUTED ONLY IN THE PRESENCE OF THE COUNTY ENGINEER.
2. THE CONTRACTOR SHALL NOTIFY THE ENVIRONMENTAL AGENCY (SECTION 4151) 728-4784, AT LEAST TWENTY FOUR HOURS BEFORE STARTING ANY WORK UNDER THIS CONTRACT.
3. HOUSE LATERALS TO BE CONSTRUCTED WITH INVERTS AT PROPERTY LINE & 2 FEET BELOW CURB GRADE EXCEPT AS NOTED.
4. WYE OR TEE BRANCHES MAY BE USED FOR CONNECTIONS TO MAINLINE SEWERS EXCEPT AS NOTED.
5. ALL STRUCTURES SHALL BE "TYPED" IN ACCORDANCE WITH THE STANDARD SPECIFICATIONS PER 5.3, EXCEPT AS NOTED.
6. PROVIDE STAKES ON THE PROPERTY LINE OR PROPERTY LINE PRODUCE AT RIGHT ANGLES TO THE SEWER LINE AT THE CENTER LINE OF EACH MANHOLE.
7. MANHOLE TOPS IN UNIMPAVED PORTIONS OF WAY TO BE SIX INCHES ABOVE FINISHED GRADE.
8. VITRIFIED CLAY PIPE JOINTS SHALL BE TYPE "B", ON 10" AND 12" STANDARD SPECIFICATIONS SECTION 308-2.
9. IF A POWER POLE IS WITHIN THREE FEET OF THE SEWER, THE SEWER SHALL BE ENCASED PER 5.23, CASE II, TWO FEET ON EACH SIDE FROM THE POINT OF INTERFERENCE.
10. IF DURING THE COURSE OF CONSTRUCTION IT IS DETERMINED THAT THERE IS LESS THAN FOUR FEET OF COVER OVER THE TOP OF A MAIN LINE OR HOUSE LATERAL V.C.P. PIPE WHICH IS NOT INDICATED ON THE PLANS, THE PIPE SHALL BE ENCASED PER 5.23, CASE II UNLESS OTHERWISE APPROVED BY THE COUNTY ENGINEER.
11. ALL JOINTS BETWEEN CAST IRON PIPE AND VITRIFIED CLAY PIPE SHALL BE MADE WITH A RUBBER SLEEVE JOINT, TYPE "C" OR "D", WITH ALLOWANCE IF NECESSARY PER STANDARD SPECIFICATIONS, SECTION 308-2.
12. ALL STRUCTURES SHALL BE "TYPED" IN ACCORDANCE WITH THE STANDARD SPECIFICATIONS AND SPECIAL PROVISIONS.
13. REINFORCE ALL TRENCHES WITHIN PAVED AREAS TO MEET L.A. COUNTY ROAD DEPT. OR CALIFORNIA STATE HIGHWAY REQUIREMENTS IN ACCORDANCE WITH PERMITS.
14. FULL COMPLIANCE WITH SECTION 306-1.8 OF THE SPECIAL PROVISIONS WILL BE REQUIRED FOR BACELLITE IN STREETS. CERTIFICATION OF BACELLITE CONCRETE AND SAND EQUIVALENTS BY A QUALIFIED, REGISTERED TESTING LABORATORY SHALL BE PROVIDED BY THE PERMITTEE PRIOR TO THE ISSUANCE OF A CERTIFICATE OF PARTIAL ACCEPTANCE.
15. SPECIAL BACKFILL IN EXISTING CONSTRUCTION:
 a. BACKFILL TRENCH AND REPLACE OTHER EARTH SO AS TO ACHIEVE THE NATURAL OR FINISHED GRADE AND SLOPE AS SHOWN ON THE GRADING PLAN APPROVED FOR THIS DEVELOPMENT BY THE BUILDING AND SAFETY DIVISION.
 b. ALL BACKFILL AND EXISTING REPLACED SHALL BE CONSTRUCTED TO A MINIMUM OF 90% MAXIMUM DENSITY PER A S.T.M. STANDARD METHOD OF TEST D58-57 AS MODIFIED. ACCEPTABLE CERTIFICATION OF SUCH COMPACTION SHALL BE SUBMITTED TO THE ENVIRONMENTAL AGENCY PRIOR TO CONSTRUCTION.

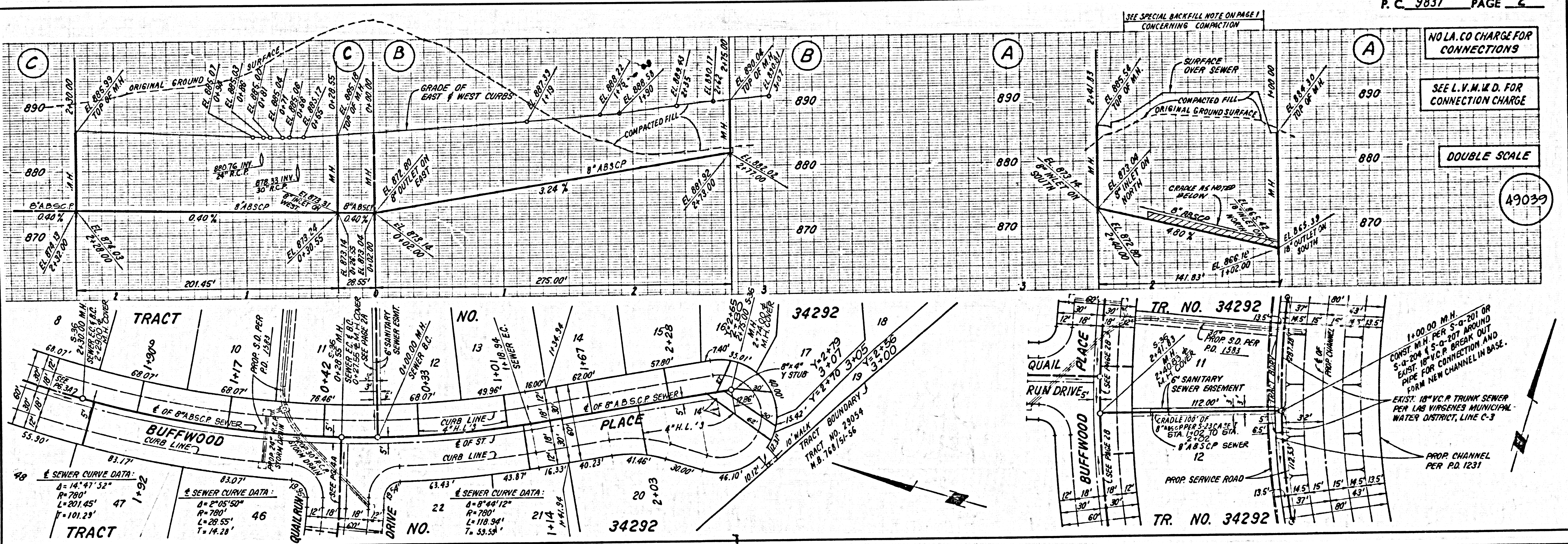
PROFILE, ALIGNMENT AND GRADE OF
SANITARY SEWERS PAGE 1
 TO BE CONSTRUCTED IN
TRACT NO. 34292
PRIVATE CONTRACT NO. 9831

W.S. 90
 4 SHEETS, 7 PAGES
 SCALE: VERT. 1"=4'
 HORIZ. 1"=40'
 JULY, 1979
 PREPARED IN THE OFFICES OF
 SIKAND ENGINEERING ASSOCIATES
 15230 BURBANK BLVD., VAN NUYS
 CALIFORNIA 91411 (213) 787-8550
 BY: Navin C. 12-1-79
 REG. C. E. No. 21873

THE FOLLOWING LATEST REVISED STANDARD PLANS ON FILE IN THE OFFICE OF THE COUNTY ENGINEER SHALL APPLY IN THE CONSTRUCTION OF THIS PROJECT.

LEGEND	5-1
MINIMUM PUBLIC SAFETY REQUIREMENTS	5-2
MANHOLE	5-3
STANDARD MANHOLE STEP	5-17
BEDDING FOR SEWER PIPE	5-20
CRACKING AND UNCRACKING	5-20
WYS OF THE SUPPORT	5-20
ALLOWABLE TRENCH WIDTHS	5-20
LOCKING MANHOLE FRAME AND COVER	5-20
NON-REINFORCED PRECAST CONCRETE MANHOLE	5-20
SPECIAL HOUSE LATERALS	5-20

COUNTY OF LOS ANGELES, CALIFORNIA
 STEPHEN J. KOONCE, COUNTY ENGINEER
 APPROVED: Martin L. Mayberry 7-11-79
 CHECKED: Dean E. Heltzer 7-10-82
 DATE: 7/17/80
 DATE: N.W. STOKES - GENERAL MANAGER



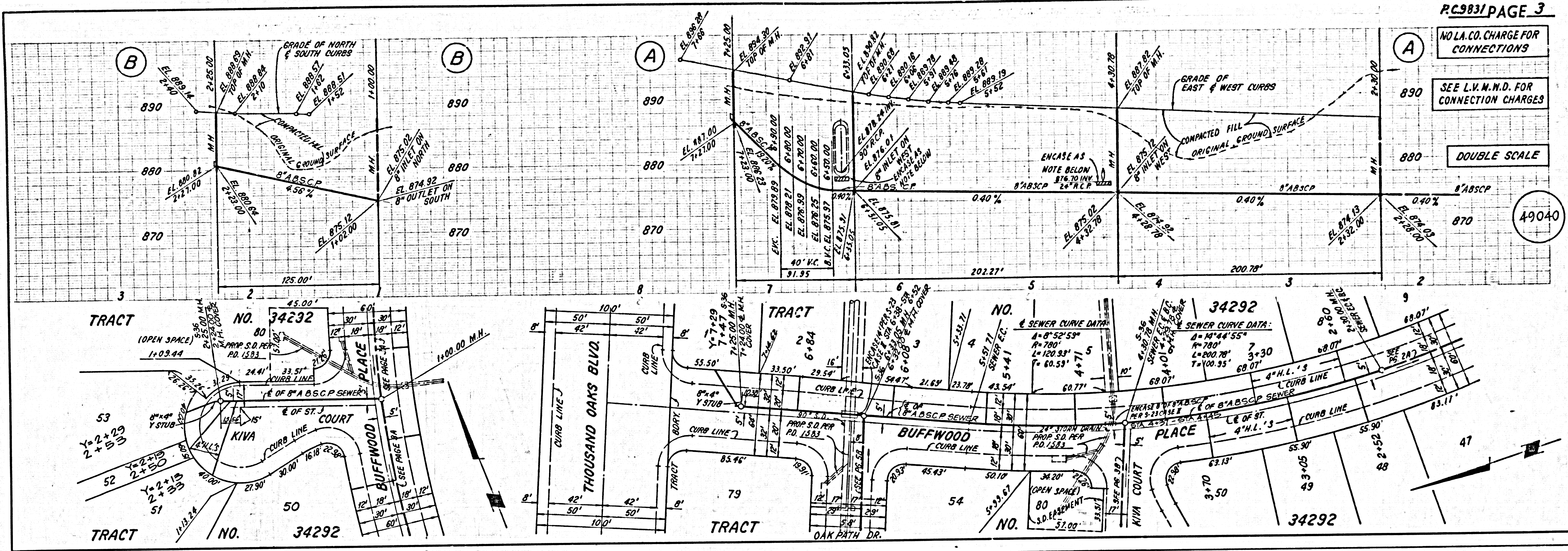
P.C. 9831 PAGE 2

NO L.A. CO CHARGE FOR CONNECTIONS

SEE L.V.M.W.D. FOR CONNECTION CHARGE

DOUBLE SCALE

49039



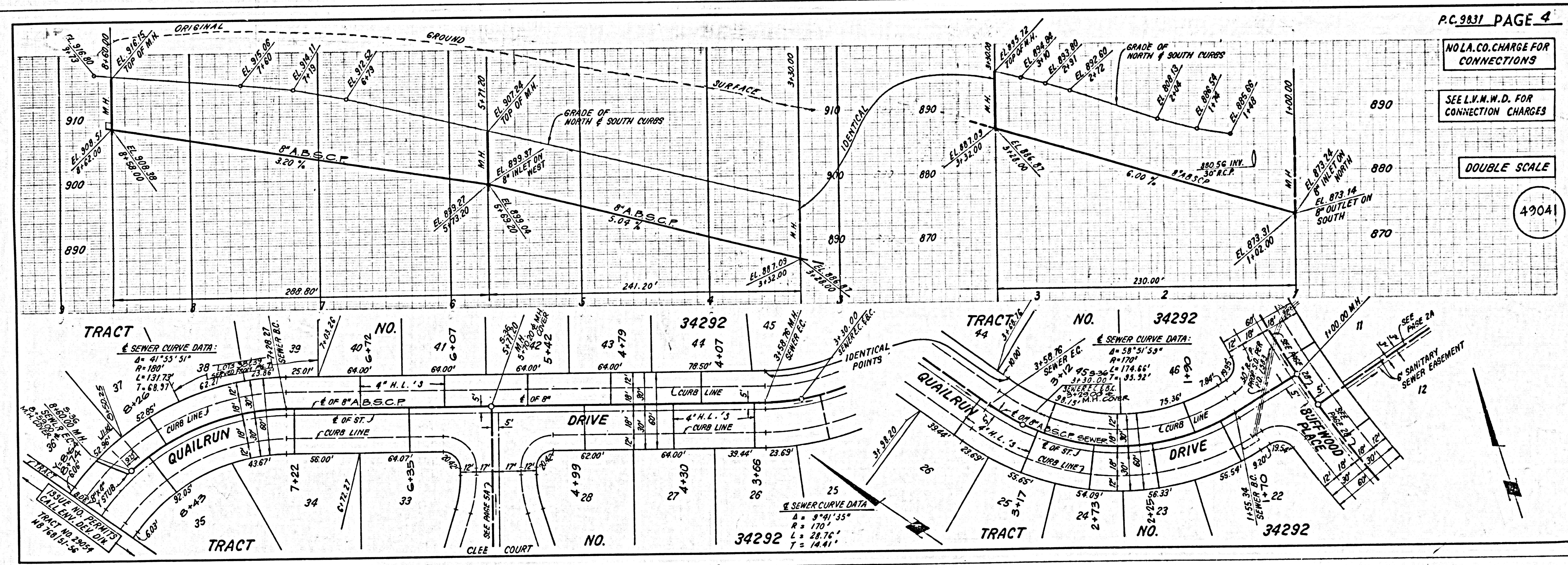
PC 9831 PAGE 3

NO LA. CO. CHARGE FOR CONNECTIONS

SEE L.V.M.W.D. FOR CONNECTION CHARGES

DOUBLE SCALE

49040



PC 9831 PAGE 4

NO LA. CO. CHARGE FOR CONNECTIONS

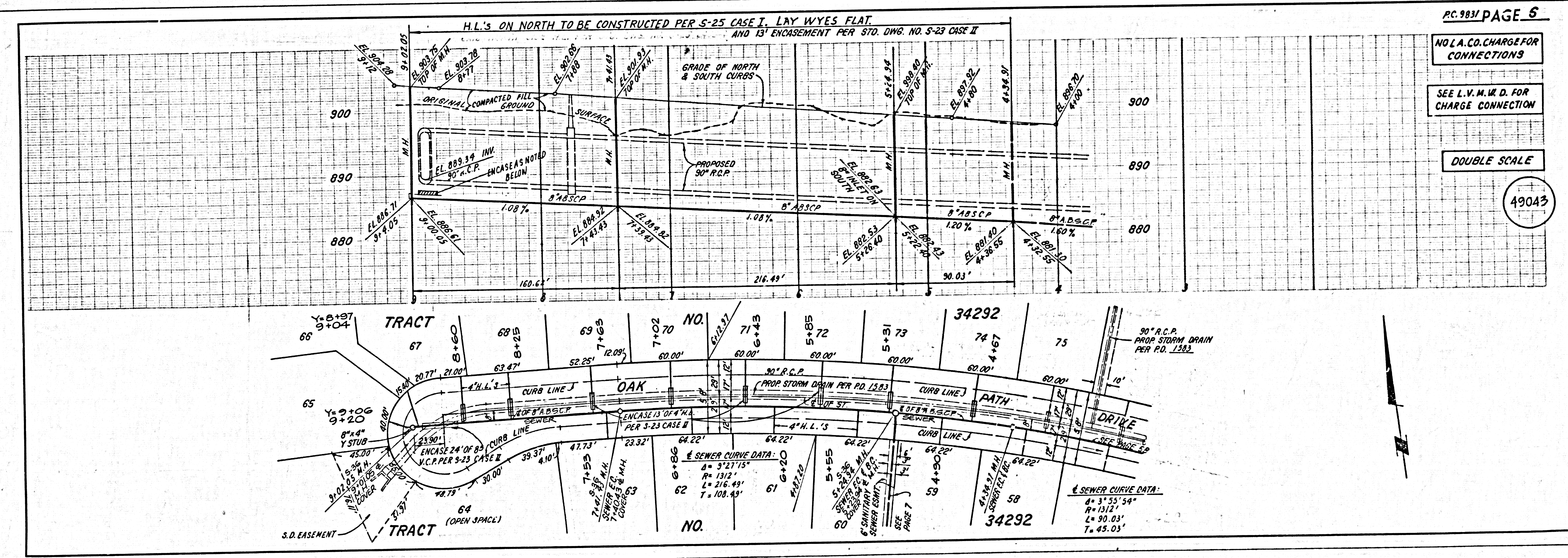
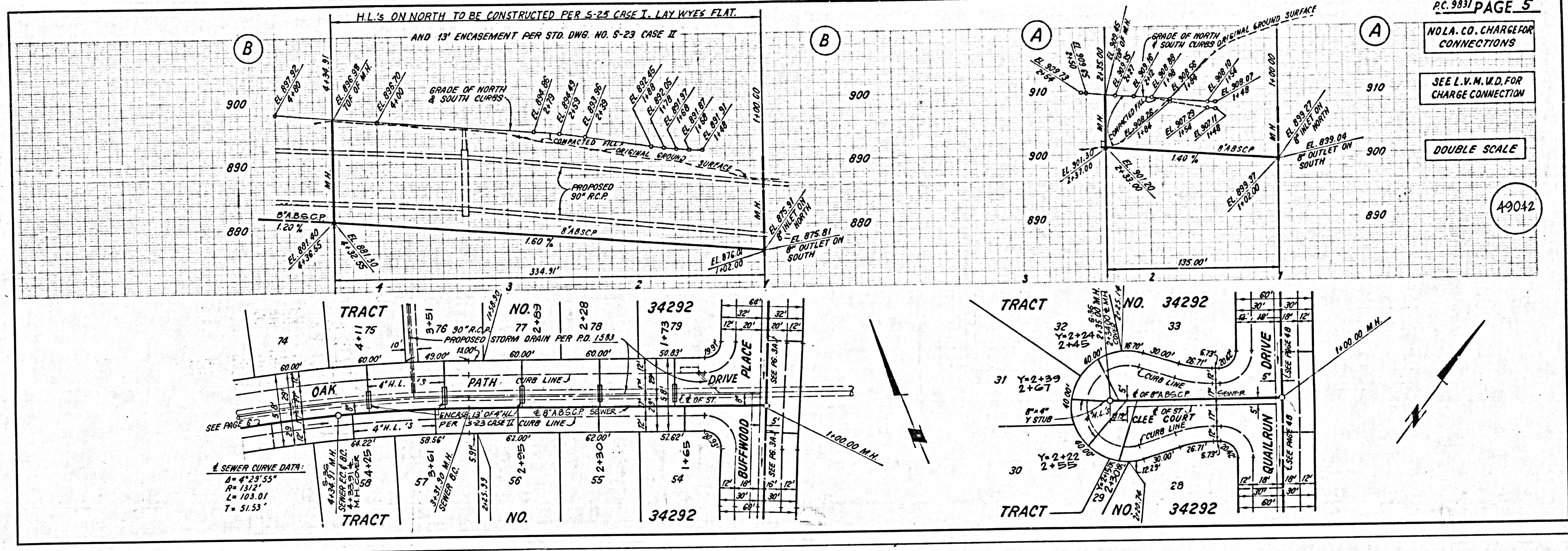
SEE L.V.M.W.D. FOR CONNECTION CHARGES

DOUBLE SCALE

49041

1880 29

BC 2831



P.C. 9831 PAGE 5
 NO L.A. CO. CHARGE FOR CONNECTIONS
 SEE L.V.M.U.D. FOR CHARGE CONNECTION
 DOUBLE SCALE

P.C. 9831 PAGE 5
 NO L.A. CO. CHARGE FOR CONNECTIONS
 SEE L.V.M.U.D. FOR CHARGE CONNECTION
 DOUBLE SCALE

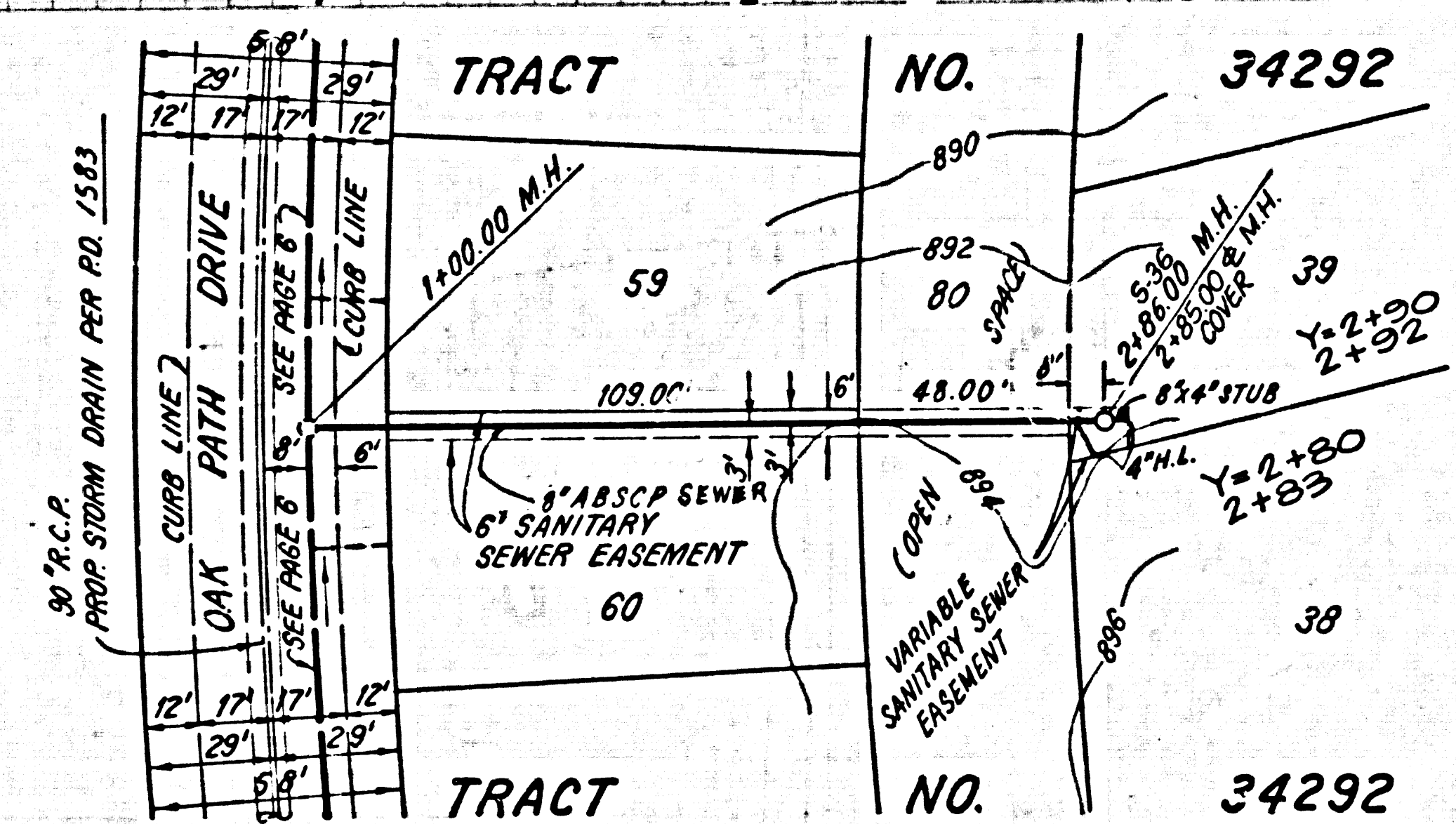
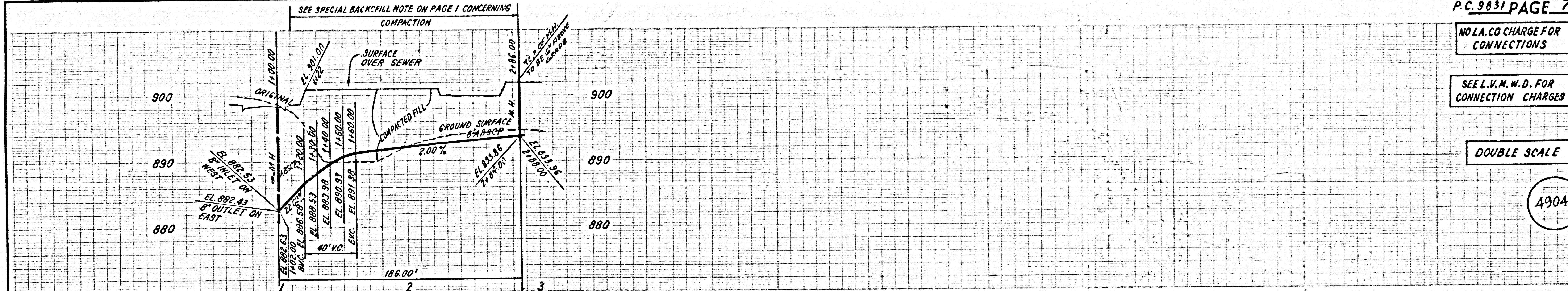
BC 2821 (3)

NO L.A. CO CHARGE FOR CONNECTIONS

SEE L.V.M.W.D. FOR CONNECTION CHARGES

DOUBLE SCALE

4904A



4
1C89 39