

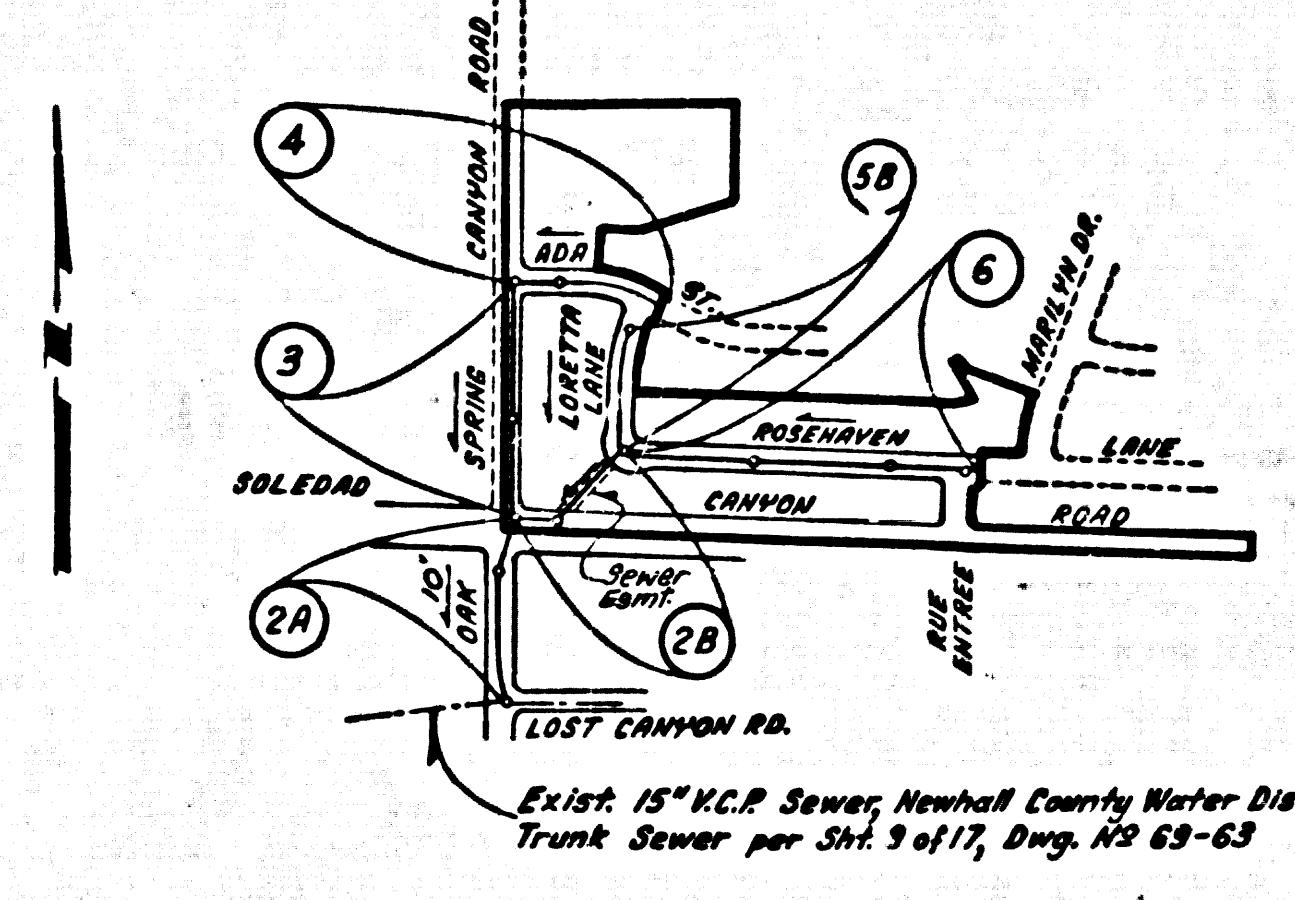
B.M. **BL 2943** ELEV. **1580.940**
 RDBM THE 3FT 5 INCH CORNER SAND
 CANYON RD + SOLEDAD CANYON RD 51 FT
 5+40 FT W C/L INT.
NEWHALL QUAD. 19 72

DOUBLE SCALE

CONSTRUCTION NOTES (cont.):

- 16. PIPE BRANCHED ONLY MAY BE USED FOR CONNECTIONS TO MAIN LINE SEWER IF A.B.C.R. IS USED.
- 17. ALL JOINTS BETWEEN CAST IRON PIPE AND A.B.C.R. SHALL BE MADE WITH APPROVED FITTINGS.
- 18. FULL COMPLIANCE WITH PART IV OF THE SPECIAL PROVISIONS IS REQUIRED FOR THE INSTALLATION OF A.B.C. COMPOSITE PIPE AND A.B.C. SOLID WALL HOUSE LATERALS.
- 19. MANHOLE WATER STOP BASKETS AND CLAMPS ARE REQUIRED FOR THE CONNECTION OF A.B.C. COMPOSITE PIPE TO MANHOLE STRUCTURES.
- 20. A.B.C. SOLID WALL PIPE MUST BE USED FOR PIPE AND HOUSE LATERAL CONNECTIONS TO A.B.C. COMPOSITE MANHOLE SEWER PIPE.
- 21. 3 INCH DIA. DEFLECTION EQUIPMENT SHOULD BE USED TO ACCOMPLISH BENDS OF CURVATURE LESS THAN 90°.
- 22. A.B.C. COMPOSITE PIPE SHALL BE SEWED IN CONFORMANCE WITH THE TABLE IN SECTION 2-1.1 OF PART IV OF SPECIAL PROVISIONS.
- 23. SPECIAL BACKFILL IN ERECTION CONSTRUCTION (A) BACKFILL TRENCH AND REPLACE OTHER EARTH SO AS TO MAINTAIN THE NATURAL UNFINISHED GRADES AND SLOPES SHOWN ON THE GRADING PLAN APPROVED FOR THIS DEVELOPMENT BY THE BUILDING & SAFETY DIVISION. (B) ALL BACKFILL AND EARTH REPLACES SHALL BE COMPACTED TO A MINIMUM OF 90% OF MAXIMUM DENSITY PER A.S.T.M. STD. METHOD OF TEST D698-57T AS MODIFIED. ACCEPTABLE CERTIFICATION OF SUCH COMPACTION SHALL BE SUBMITTED TO THE ENVIRONMENTAL DEVELOPMENT DIVISION.

NOTE: NUMBERS IN CIRCLES INDICATE PAGE NUMBERS.



INDEX MAP
 Scale: 1" = 600'
P.C. NO 9834
TRACT NO 38373

ON PAGE 4 ISSUE NO HOUSE CONNECTION PERMITS FOR LOTS 13, 14 & 15 OF TRACT 38374 UNTIL TRACT IS RECORDED OR UPPER MANHOLE IS CONSTRUCTED.

NO CONNECTION FOR THE DISPOSAL OF INDUSTRIAL WASTES SHALL BE MADE TO SEWERS SHOWN ON THESE DRAWINGS UNTIL A PERMIT FOR INDUSTRIAL WASTEWATER DISCHARGE HAS BEEN ISSUED BY THE SANITATION DISTRICTS FOR SAID CONNECTION.
 BEFORE BREAKING INTO OR CONSTRUCTION ON A COUNTY SANITATION DISTRICT SEWER AND PRIOR TO FINAL ACCEPTANCE OF THE PROJECT, SANITATION DISTRICT INSPECTOR SHALL BE NOTIFIED BY PHONE - 947-8605, 638-1161 SO THAT REQUIRED INSPECTION CAN BE MADE.

GENERAL NOTES:

- 1. ELEVATIONS ARE IN FEET ABOVE U.S.C. & G.S. SEA LEVEL DATUM OF 1929.
- 2. NO REVISIONS SHALL BE MADE IN THESE PLANS WITHOUT THE APPROVAL OF THE COUNTY ENGINEER.
- 3. NO REPRESENTATIVE OF THE COUNTY ENGINEER WILL SURVEY OR LAY OUT ANY PORTION OF THE WORK.
- 4. GRADES TO WHICH THIS IMPROVEMENT IS TO BE CONSTRUCTED ARE SHOWN ON PLANS AND PROFILE GRADE POINTS FOR TOP OF CURBS, CENTER LINE OF STREETS, OR CENTER LINE OF ALLEYS ARE SHOWN BY CIRCLES ON PROFILES AT ALL POINTS BETWEEN DESIGNATED POINTS THE GRADE SHALL BE ESTABLISHED TO AS TO CONFORM TO A STRAIGHT LINE DRAWN BETWEEN SAID DESIGNATED POINTS.
- 5. THE PRIVATE ENGINEER SHALL FURNISH THE COUNTY ENGINEER WITH GRADE SHEETS AND STATIONING FOR ALL HOUSE LATERALS AND "T" OR "Y" BRANCHES AND SHALL PROVIDE STAKES FOR THEM AT THEIR PROPER LOCATIONS WITH STATIONING PLAINLY MARKED. ALL HOUSE LATERALS SHALL BE CONSTRUCTED IN A STRAIGHT ALIGNMENT AT RIGHT ANGLES FROM THE MAIN LINE SEWER EXCEPT AS SHOWN ON THE PLANS. HOUSE LATERALS FROM CHIMNEYS SHALL NOT BE AT AN ANGLE OF LESS THAN 45° WITH THE MAIN LINE SEWER. ANY CHANGE IN ALIGNMENT SHALL BE REQUESTED IN WRITING BY THE PRIVATE ENGINEER.
- 6. THE PRIVATE ENGINEER SHALL FURNISH THE HOUSE LATERAL DEPTH AT THE PROPERTY LINE BELOW THE TOP OF CURB ELEVATION FOR EACH HOUSE LATERAL ON THE GRADE SHEET.
- 7. BEFORE WORK CAN BE STARTED, THE CONTRACTOR MUST OBTAIN A PERMIT TO EXCAVATE IN COUNTY STREETS FROM THE L.A. COUNTY ROAD DEPT., DISTRICT OFFICE NO. 4 AND PAY A FEE TO THE COUNTY ENGINEER, 800 S. VERMONT, ROOM 406 LOS ANGELES, TO COVER THE COST OF CONSTRUCTION INSPECTION AND RECORD PLANS.
- 8. IF WORK IS TO BE DONE IN A STATE HIGHWAY, A PERMIT MUST BE OBTAINED FROM THE STATE OF CALIFORNIA, DIVISION OF HIGHWAYS, 126 SOUTH BRIDGE STREET, LOS ANGELES, CALIFORNIA.
- 9. APPROVAL OF THIS PLAN BY THE COUNTY OF LOS ANGELES DOES NOT CONSTITUTE A REPRESENTATION AS TO THE ACCURACY OF THE LOCATION OR THE EXISTENCE OR NON-EXISTENCE OF ANY UNDERGROUND UTILITY PIPE, OR STRUCTURE WITHIN THE LIMITS OF THIS PROJECT. THIS NOTE APPLIES TO ALL PAGES.
- 10. REFER TO SECTION 2-0.4.3 OF THE STANDARD SPECIFICATIONS, REGARDING SAFETY ORDERS.

CONSTRUCTION NOTES:

- 1. WORK SHALL BE CONSTRUCTED ACCORDING TO THE STANDARD SPECIFICATIONS FOR PUBLIC WORKS CONSTRUCTION (1972 EDITION) WITH 1980 SUPPLEMENTS AND COUNTY ENGINEER SPECIAL PROVISIONS FOR THE CONSTRUCTION OF SANITARY SEWERS BATED APRIL 25, 1978 AND SHALL BE PROSECUTED ONLY IN THE PRESENCE OF THE COUNTY ENGINEER.
- 2. THE CONTRACTOR SHALL NOTIFY THE ENVIRONMENTAL DEVELOPMENT DIVISION BY TELEPHONE (213) 789-9261 AT LEAST TWENTY-FOUR HOURS BEFORE STARTING ANY WORK UNDER THIS CONTRACT.
- 3. HOUSE LATERALS TO BE CONSTRUCTED WITH INVERTS AT PROPERTY LINE & PER BELOW CURB GRADE EXCEPT AS NOTED.
- 4. WITH THE BRANCHES MAY BE USED FOR CONNECTIONS TO MANHOLE SEWER EXCEPT AS NOTED.
- 5. ALL STRUCTURES SHALL BE BUILT WITH MANHOLE PER 5.2 OR PERCAST CONCRETE MANHOLES PER 5.24, EXCEPT AS NOTED.
- 6. PROVIDE STAKES ON THE PROPERTY LINE OR PROPERTY LINES PRODUCED AT RIGHT ANGLES TO THE SEWER LINE AT THE CENTER LINE OF EACH MANHOLE.
- 7. MANHOLE TOPS IN UNIMPROVED PORTS OF WAY TO BE 22 INCHES ABOVE FINISHED GRADE.
- 8. WITHIN CLAY PIPE JOINTS SHALL BE TYPE "C", "D" OR "E" PER STANDARD SPECIFICATIONS SECTION 306-2.
- 9. IF A POWER POLE IS WITHIN THREE FEET OF THE SEWER, THE SEWER SHALL BE ENCASED, PER 5.23, CASE B, TWO FEET ON EACH SIDE FROM THE POINT OF INTERFERENCE.
- 10. IF DURING THE COURSE OF CONSTRUCTION IT IS DETERMINED THAT THERE IS LESS THAN FOUR FEET OF COVER OVER THE TOP OF A MAIN LINE OR HOUSE LATERAL, PER 5.1.1.1 OF THE STANDARD SPECIFICATIONS, SECTION 306-2, THE PIPE SHALL BE ENCASED PER 5.25, CASE B UNLESS OTHERWISE APPROVED BY THE COUNTY ENGINEER.
- 11. ALL JOINTS BETWEEN CAST IRON PIPE AND VITRIFIED CLAY PIPE SHALL BE MADE WITH A RUBBER SLAVE JOINT, TYPE "C" OR "D", WITH GASKETS IF NECESSARY, PER STANDARD SPECIFICATIONS, SECTION 306-2.
- 12. SEWERS TO BE TESTED FOR LEAKAGE PER SECTION 306-1.6 OF THE STANDARD SPECIFICATIONS AND SPECIAL PROVISIONS.
- 13. REPAIRS ALL TRENCHES WITHIN PAVED AREAS TO MEET L.A. COUNTY ROAD DEPT. OR CALIFORNIA STATE HIGHWAY REQUIREMENTS IN ACCORDANCE WITH PERMITS.
- 14. FULL COMPLIANCE WITH SECTION 306-1.6 OF THE SPECIAL PROVISIONS WILL BE REQUIRED FOR BACKFILL IN STREETS. CERTIFICATION OF BACKFILL COMPACTION AND SAND EQUIVALENTS BY A QUALIFIED REGISTERED TESTING LABORATORY SHALL BE PROVIDED BY THE PERMITTEE PRIOR TO THE ISSUANCE OF A CERTIFICATE OF PARTIAL ACCEPTANCE.

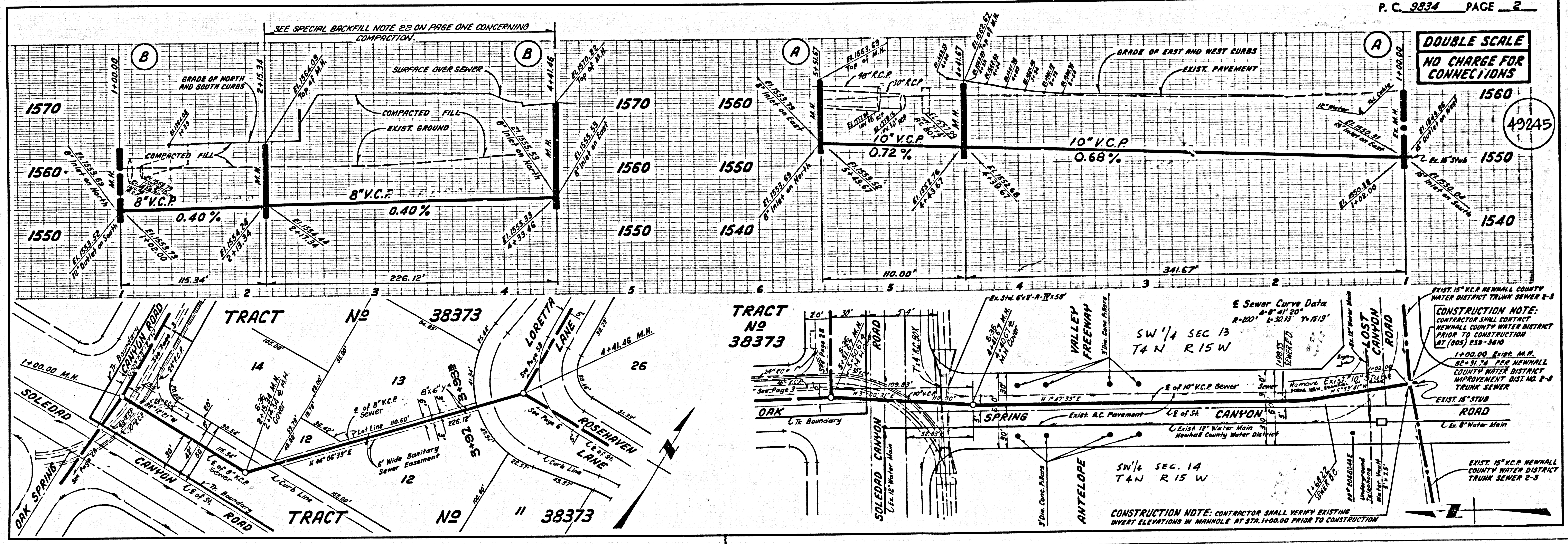
TO BE CONSTRUCTED IN
TRACT NO 38373
PRIVATE CONTRACT NO. 9834

W.S. 62
 3 SHEETS, 6 PAGES
 SCALE: VERT. 1" = 4' HORIZ. 1" = 40'
 PREPARED IN THE OFFICES OF
ENGINEERING SERVICE CORPORATION
 4676 ADMIRALTY WAY, SUITE 333 - MARINA DEL REY, CALIF. 90291
 BY: *[Signature]*
 REG. C.E. No. 21649

THE FOLLOWING LATEST REVISED STANDARD PLANS ON FILE IN THE OFFICE OF THE COUNTY ENGINEER SHALL APPLY IN THE CONSTRUCTION OF THIS PROJECT:

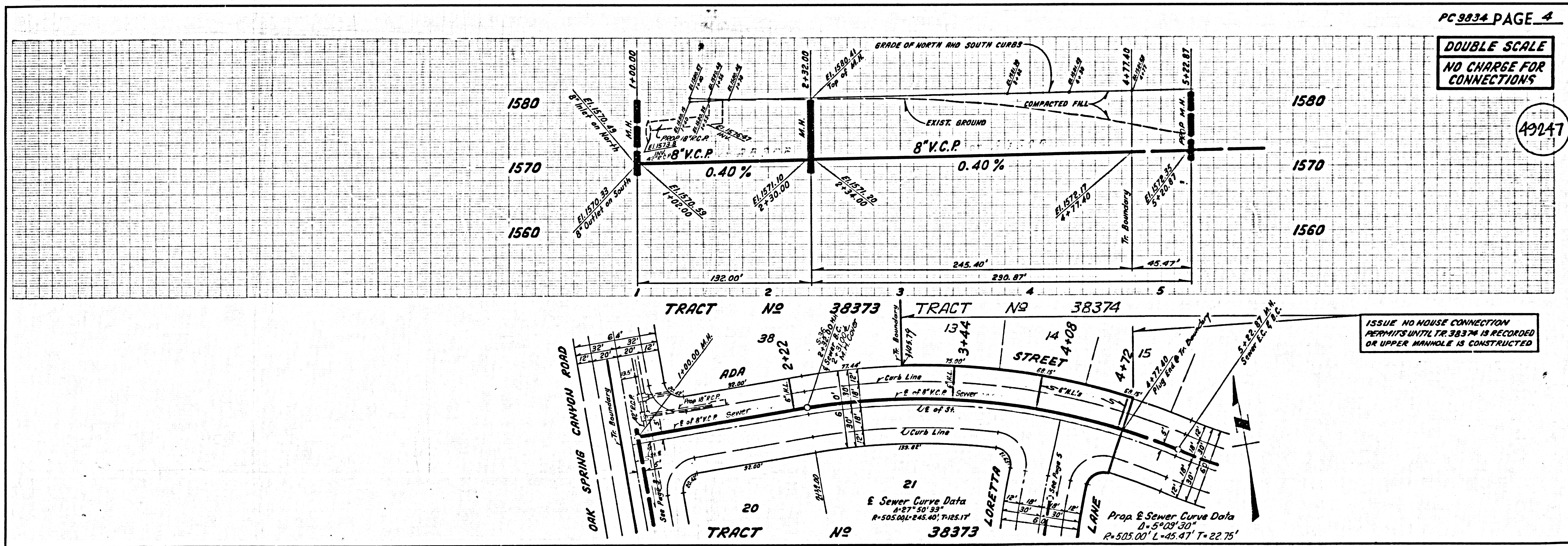
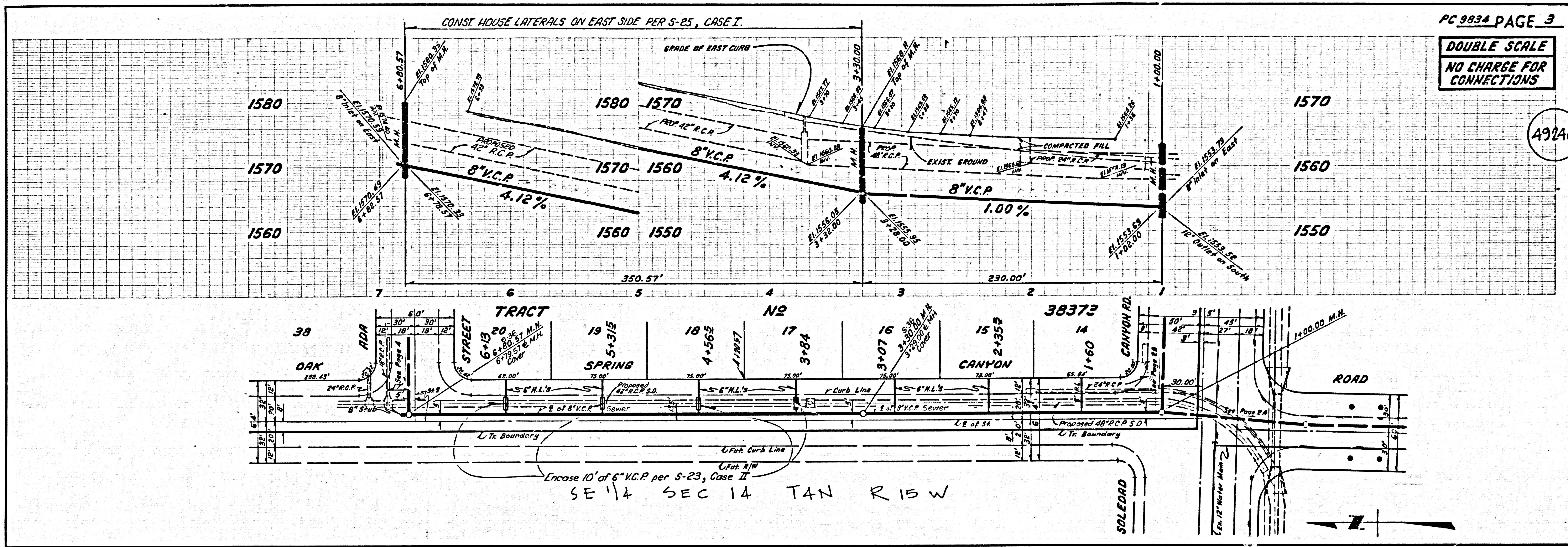
10000	MINIMUM PUBLIC SAFETY REQUIREMENTS	5-1
10001	FORCE MAINS	5-2
10002	STANDARD MANHOLE STD.	5-7
10003	SEWINGS FOR SEWER PIPE	5-9
10004	CRADLING AND ENCASEMENT	5-10
10005	PIPE ON THE SURFACE	5-11
10006	ALLOWABLE TRENCH WIDTHS	5-12
10007	LOCKING MANHOLE FRAME AND COVER	5-13
10008	NON-APPROVED PERCAST CONCRETE MANHOLE	5-14

COUNTY OF LOS ANGELES, CALIFORNIA
STEPHEN J. ROONEY, COUNTY ENGINEER **WALTER E. GARRISON, CHIEF ENGINEER**
 APPROVED *[Signature]* 2/4/81 DATE *[Signature]* 2/4/81
 CHECKED *[Signature]* 2/16/81 DATE *[Signature]* 2/5/81
 REG. C.E. NO. 16883
 Santa Clarita Valley BLDG. DIST. 88



DOUBLE SCALE
NO CHARGE FOR CONNECTIONS

CONSTRUCTION NOTE: CONTRACTOR SHALL VERIFY EXISTING INVERT ELEVATIONS IN MANHOLE AT STA. 1+00.00 PRIOR TO CONSTRUCTION

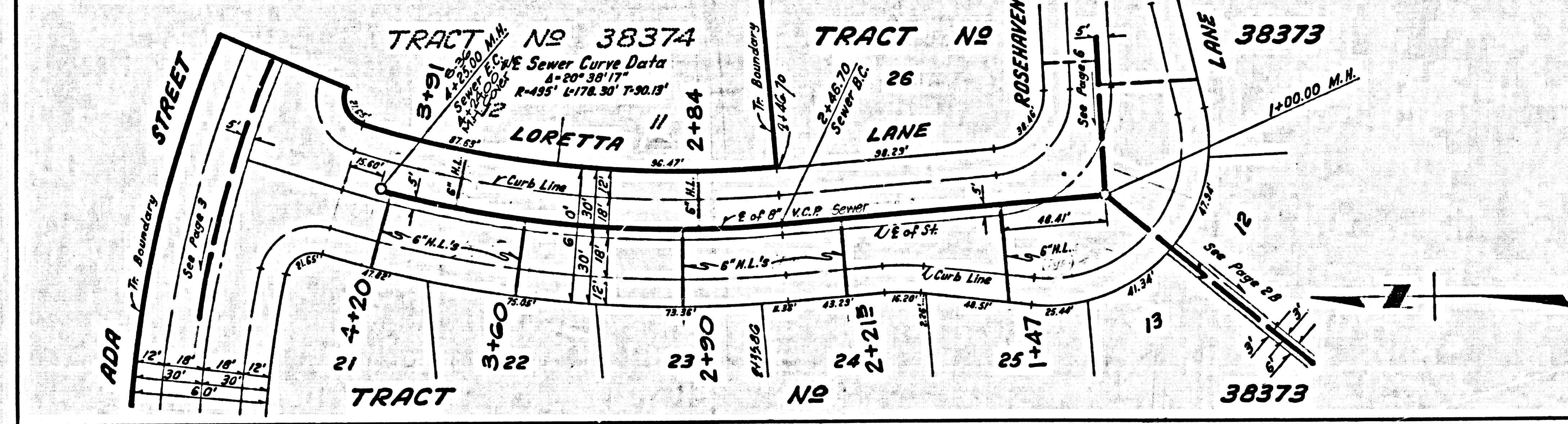
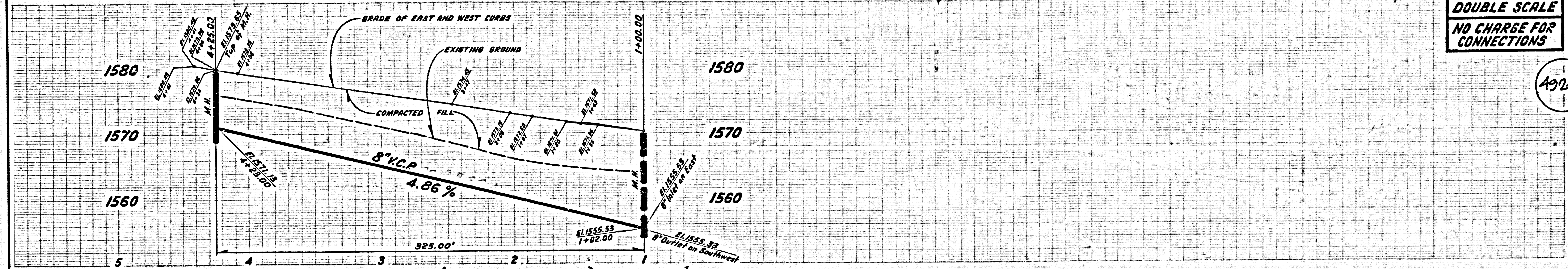


S 4888 09 27888 MTCRART

54 15'

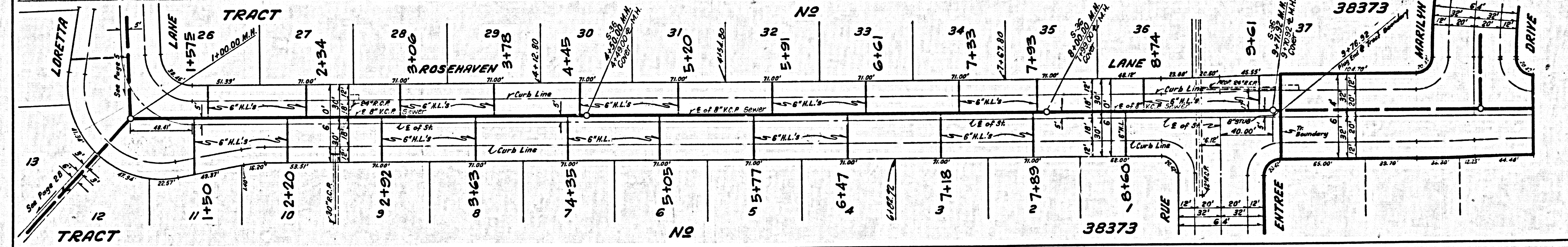
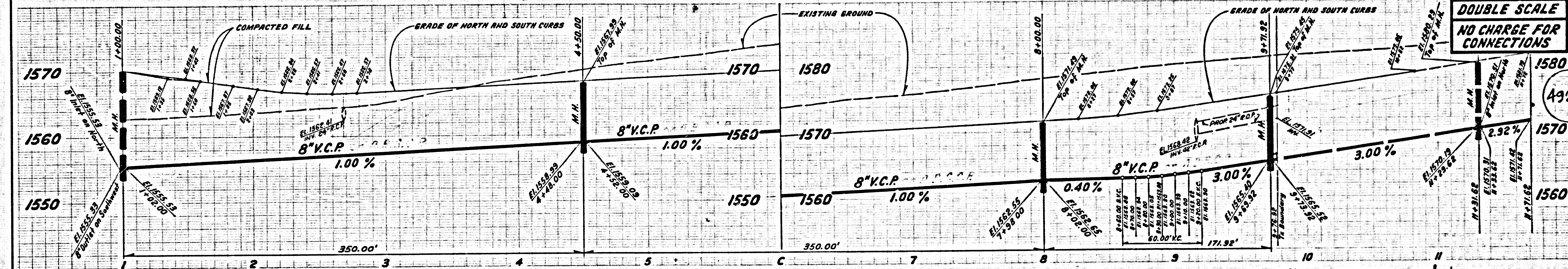
DOUBLE SCALE
NO CHARGE FOR
CONNECTIONS

49248



DOUBLE SCALE
NO CHARGE FOR
CONNECTIONS

49249



3
A 882 79
E 788 ON TRACT

Handwritten notes and markings at the bottom of the page, including 'HB', 'HN', 'HW', 'HB', and 'SH 11'.