

B.M. BL 2943 ELEV. 1580.940
 RDBM T&B 3 FT S BCR @ SW COR SAND
 CANYON RD + SOLEDAD CANYON RD 81 FT
 5+40 FT W C/L INT.
 NEWHALL QUAD. 1972

DOUBLE SCALE

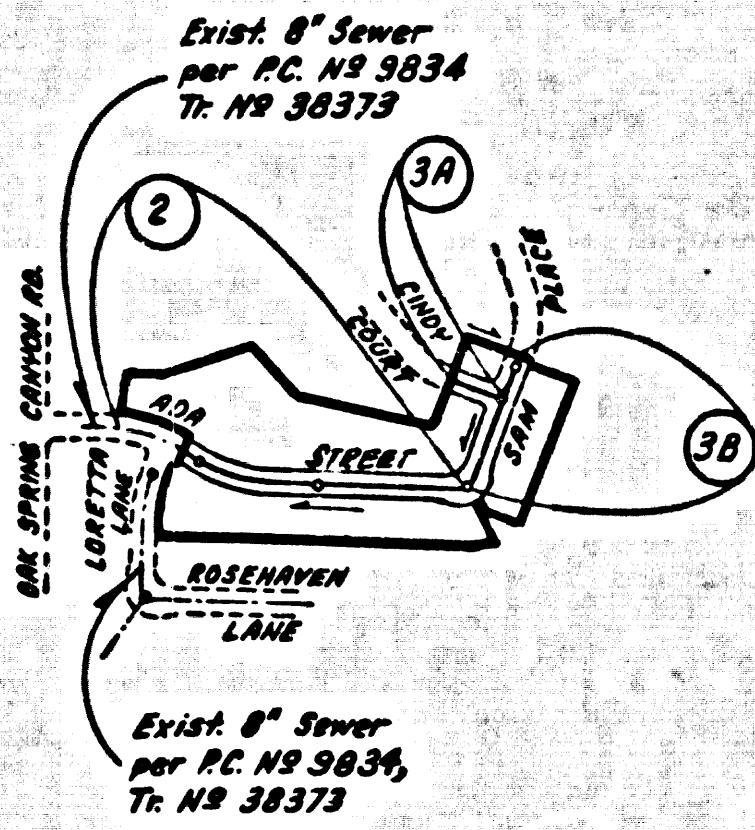
CONSTRUCTION NOTES (CONT.):

16. PIPE BRANCHES ONLY MAY BE USED FOR CONNECTIONS TO MAIN LINE SEWER IF A.S.E.C.P. IS USED.
17. ALL JOINTS BETWEEN CAST IRON PIPE AND A.S.E.C.P. SHALL BE MADE WITH APPROVED FITTINGS.
18. FULL COMPLIANCE WITH PART IX OF THE SPECIAL PROVISIONS IS REQUIRED FOR THE INSTALLATION OF A.S.E. COMPOSITE PIPE AND A.S.E. SOLID WALL HOUSE LATERALS.
19. MANHOLE WIPERS STOP BRACKETS AND CLAMPS ARE REQUIRED FOR THE CONNECTION OF A.S.E. COMPOSITE PIPE TO MANHOLE STRUCTURES.
20. A.S.E. SOLID WALL PIPE MUST BE USED FOR WYE AND HOUSE LATERAL CONNECTIONS TO A.S.E. COMPOSITE MAINLINE SEWER PIPE.
21. 8" SEWER MANHOLE COVERS SHOULD BE USED TO ACCOMPLISH RADIIUS OF CURVATURE LESS THAN 20 FT.
22. A.S.E. COMPOSITE PIPE SHALL BE BEDDED IN CONFORMANCE WITH THE TABLE IN SECTION B-2.1 OF PART IX OF SPECIAL PROVISIONS.

NOTE:
 NUMBERS IN CIRCLES
 INDICATE PAGE NUMBERS.

NO CONNECTION FOR THE DISPOSAL OF INDUSTRIAL WASTES SHALL BE MADE TO SEWERS SHOWN ON THESE DRAWINGS UNTIL A PERMIT FOR INDUSTRIAL WASTEWATER DISCHARGE HAS BEEN ISSUED BY THE SANITATION DISTRICTS FOR SAID CONNECTION.

BEFORE BREAKING INTO OR CONSTRUCTION ON A COUNTY SANITATION DISTRICT SEWER AND PRIOR TO FINAL ACCEPTANCE OF THE PROJECT, SANITATION DISTRICT INSPECTOR SHALL BE NOTIFIED BY PHONE - 352-3655, AND SO THAT REQUIRED INSPECTION CAN BE MADE.



INDEX MAP
 Scale: 1"=600'
 P.C. NO 9835
 TRACT NO 38374

ISSUE NO HOUSE
 LATERAL PERMITS
 UNTIL P.C. 9834 -
 TRACT NO. 38373,
 IS ACCEPTED

LOTS 11 & 12 ARE SERVED BY P.C. 9834

LOT 1 IS RESERVED AS A PRIVATE PARK
 SITE, NO HOUSE CONNECTION IS REQUIRED

GENERAL NOTES:

1. ELEVATIONS ARE IN FEET ABOVE U.S.C. & G.S. SEA LEVEL DATUM OF 1929.
2. NO REVISIONS SHALL BE MADE IN THESE PLANS WITHOUT THE APPROVAL OF THE COUNTY ENGINEER.
3. NO REPRESENTATIVE OF THE COUNTY ENGINEER WILL SURVEY OR SET OUT ANY PORTION OF THIS PROJECT.
4. GRADES TO WHICH THIS IMPROVEMENT IS TO BE CONSTRUCTED ARE SHOWN ON PLANS AND PROFILES. GRADE POINTS FOR TOP OF CURBS, CENTER LINE OF STREETS, OR CENTER LINE OF ALLEYS ARE SHOWN BY CIRCLES ON PROFILES AT ALL POINTS BETWEEN DESIGNATED POINTS. THE GRADE SHALL BE ESTABLISHED SO AS TO CONFORM TO A STRAIGHT LINE BETWEEN SAID DESIGNATED POINTS.
5. THE PRIVATE ENGINEER SHALL FURNISH THE COUNTY ENGINEER WITH GRADE SHEETS AND STATIONING, FOR ALL HOUSE LATERALS AND "T" OR "Y" BRANCHES AND SHALL PROVIDE STAKES FOR THEM AT THEIR PROPER LOCATIONS WITH STATIONING PLAINLY MARKED. ALL HOUSE LATERALS SHALL BE CONSTRUCTED IN A STRAIGHT ALIGNMENT AT RIGHT ANGLES FROM THE MAIN LINE SEWER EXCEPT AS SHOWN ON THE PLANS. HOUSE LATERALS FROM CHIMNEYS SHALL NOT HAVE AN ANGLE OF LESS THAN 45° WITH THE MAIN LINE SEWER. ANY CHANGE IN ALIGNMENT SHALL BE REQUESTED IN WRITING BY THE PRIVATE ENGINEER.
6. THE PRIVATE ENGINEER SHALL FURNISH THE HOUSE LATERAL DATUM AT THE PROPERTY LINE BELOW THE TOP OF CURB ELEVATION FOR EACH HOUSE LATERAL ON THE GRADE SHEET.
7. BEFORE WORK CAN BE STARTED, THE CONTRACTOR MUST OBTAIN A PERMIT TO EXCAVATE IN COUNTY STREETS FROM THE L.A. COUNTY ROAD DEPT., DISTRICT OFFICE NO. 8 AND PAY A FEE TO THE COUNTY ENGINEER, 550 S. VERBAVANT, ROOM 408 LOS ANGELES, TO COVER THE COST OF CONSTRUCTION INSPECTION AND RECORD PLANS.
8. IF WORK IS TO BE DONE IN A STATE HIGHWAY, A PERMIT MUST BE OBTAINED FROM THE STATE OF CALIFORNIA, DIVISION OF HIGHWAYS, 120 SOUTH SPRING STREET, LOS ANGELES, CALIFORNIA.
9. APPROVAL OF THIS PLAN BY THE COUNTY OF LOS ANGELES DOES NOT CONSTITUTE A REPRESENTATION AS TO THE ACCURACY OF THE LOCATION OF OR THE EXISTENCE OR NON-EXISTENCE OF ANY UNDERGROUND UTILITY PIPE, OR STRUCTURE WITHIN THE LIMITS OF THIS PROJECT. THIS NOTE APPLIES TO ALL GRADES.
10. REFER TO SECTION 7-10.4.3 OF THE STANDARD SPECIFICATIONS, REGARDING SAFETY SIGNS.
11. PRIOR TO THE ISSUANCE OF THE REQUIRED SEWER CONSTRUCTION PERMITS, THE CONTRACTOR SHALL OBTAIN AND WITH THE COUNTY ENGINEER CONSIDER AS A PERMIT TO EXCAVATE IN COUNTY STREETS FROM THE LOS ANGELES COUNTY PUBLIC DEPARTMENT, 4 PERMITS FOR EXCAVATION AND TRENCHES FROM THE STATE OF CALIFORNIA, DIVISION OF INDUSTRIAL SAFETY AND CERTIFICATES OF INSURER'S COMPENSATION INSURANCE WITH THE DEPARTMENT OF COUNTY ENGINEER, 500 SOUTH BROADWAY, ROOM 408, LOS ANGELES, CALIFORNIA. BEFORE, HANDED AS THE CERTIFICATE HOLDERS TO BE NOTIFIED 30 DAYS PRIOR TO CANCELLATION OF POLICY.

CONSTRUCTION NOTES:

1. WORK SHALL BE CONSTRUCTED ACCORDING TO THE STANDARD SPECIFICATIONS FOR PUBLIC WORKS CONSTRUCTION (1979 EDITION) WITH 1980 SUPPLEMENTS AND COUNTY ENGINEER SPECIAL PROVISIONS FOR THE CONSTRUCTION OF SANITARY SEWERS DATED SEPTEMBER 1979 AND SHALL BE INDICATED ONLY IN THE PRESENCE OF THE COUNTY ENGINEER.
2. THE CONTRACTOR SHALL NOTIFY THE ENVIRONMENTAL DEVELOPMENT DIVISION BY TELEPHONE (213) 786-5006 BY LEAST TWENTY-FOUR HOURS BEFORE STARTING ANY WORK UNDER THIS CONTRACT.
3. HOUSE LATERALS TO BE CONSTRUCTED WITH 8" V.C.P. SHALL BE 1" BELOW CURB GRADE EXCEPT AS NOTED.
4. WYE OR TE BRACKETS MAY BE USED FOR CONNECTIONS TO MAINLINE SEWERS EXCEPT AS NOTED.
5. ALL STRUCTURES SHALL BE 8" THICK MANHOLE PER 3-3 OR PRECAST CONCRETE MANHOLE PER 3-36, EXCEPT AS NOTED.
6. PROVIDE STAKES ON THE PROPERTY LINE OR PROPERTY LINES PRODUCED AT RIGHT ANGLES TO THE SEWER LINE AT THE CENTER LINE OF EACH MANHOLE.
7. MANHOLE TOPS IN UNIMPROVED PORTIONS OF WAY TO BE SIX INCHES ABOVE FINISHED GRADE.
8. WITNESS CLAY PIPE JOINTS SHALL BE TYPE "D" OR "F" PER STANDARD SPECIFICATIONS SECTION 388-2.
9. IF A POWER POLE IS WITHIN THREE FEET OF 1-8 SEWER, THE SEWER SHALL BE ENCASED, PER 3-35, CASE B, TWO FEET ON EACH SIDE FROM THE POINT OF INTERFERENCE.
10. IF DURING THE COURSE OF CONSTRUCTION IT IS DETERMINED THAT THERE IS LESS THAN FOUR FEET OF COVER OVER THE TOP OF A MAIN LINE OR HOUSE LATERAL V.C.P. MANHOLE, THE PIPE SHALL BE ENCASED PER 3-35, CASE B, UNLESS OTHERWISE APPROVED BY THE COUNTY ENGINEER.
11. ALL JOINTS BETWEEN CAST IRON PIPE AND WITNESS CLAY PIPE SHALL BE MADE WITH A RUBBER SLEEVE JOINT, TYPE "C" OR "F", WITH SUBMERSION IF NECESSARY PER STANDARD SPECIFICATIONS, SECTION 388-2.
12. SEWERS TO BE TESTED FOR LEAKAGE PER SECTION 388-1.6 OF THE STANDARD SPECIFICATIONS AND SPECIAL PROVISIONS.
13. SURFACE ALL TRENCHES WITHIN PAVED AREAS TO MEET L.A. COUNTY ROAD DEPT. OR CALIFORNIA STATE HIGHWAY IMPROVEMENTS IN ACCORDANCE WITH PERMITS.
14. FULL COMPLIANCE WITH SECTION 388-1.6 OF THE SPECIAL PROVISIONS WILL BE REQUIRED FOR BACKFILL IN STREETS. CERTIFICATION OF BACKFILL COMPACTION AND SAND EQUIVALENTS BY A QUALIFIED REGISTERED TESTING LABORATORY SHALL BE PROVIDED BY THE PERMITTEE PRIOR TO THE ISSUANCE OF A CERTIFICATE OF PARTIAL ACCEPTANCE.

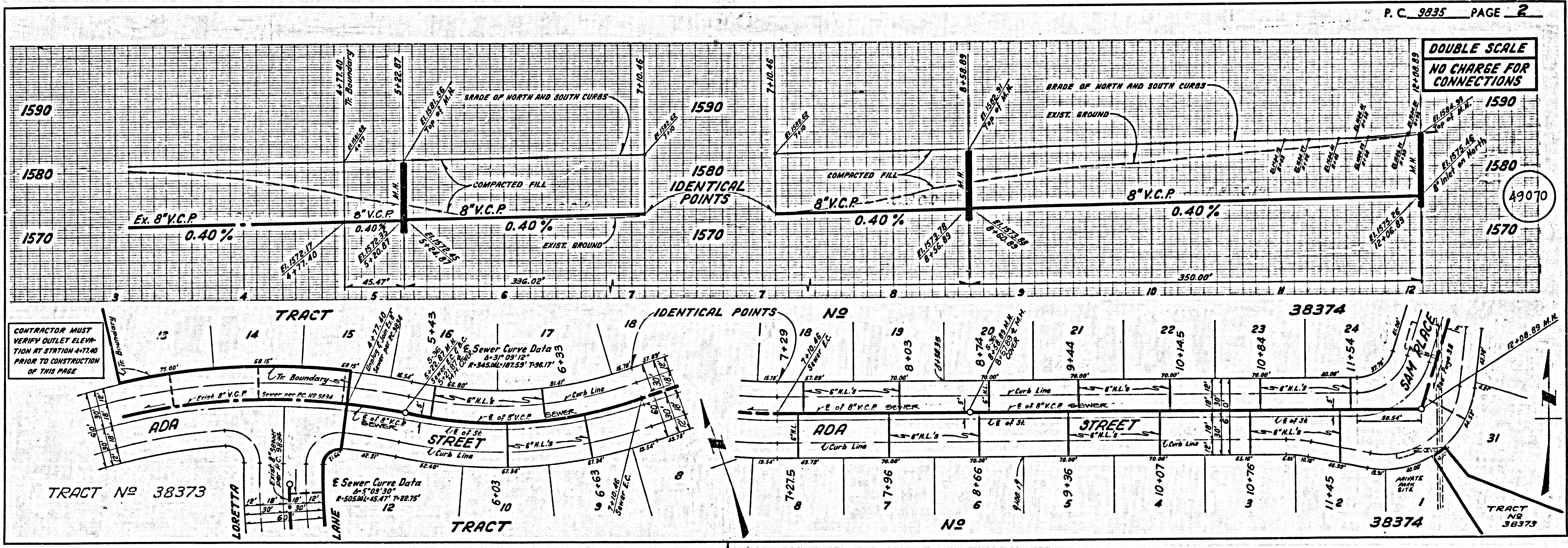
TO BE CONSTRUCTED IN
TRACT NO 38374
 PRIVATE CONTRACT NO. 9835

W.S. 62
 2 SHEETS, 3 PAGES
 SCALE: VERT. 1"=4' HORIZ. 1"=40'
 MARCH 5, 1980
 PREPARED IN THE OFFICES OF
ENGINEERING SERVICE CORPORATION
 4676 ADJUTANT WAY, SUITE 333 - MARINA DEL REY, CA 90291
 BY: *Lois P. ...*
 REG. C.E. No. 21649

THE FOLLOWING LATEST REVISED STANDARD PLANS ON FILE IN THE OFFICE OF THE COUNTY ENGINEER SHALL APPLY IN THE CONSTRUCTION OF THIS PROJECT.

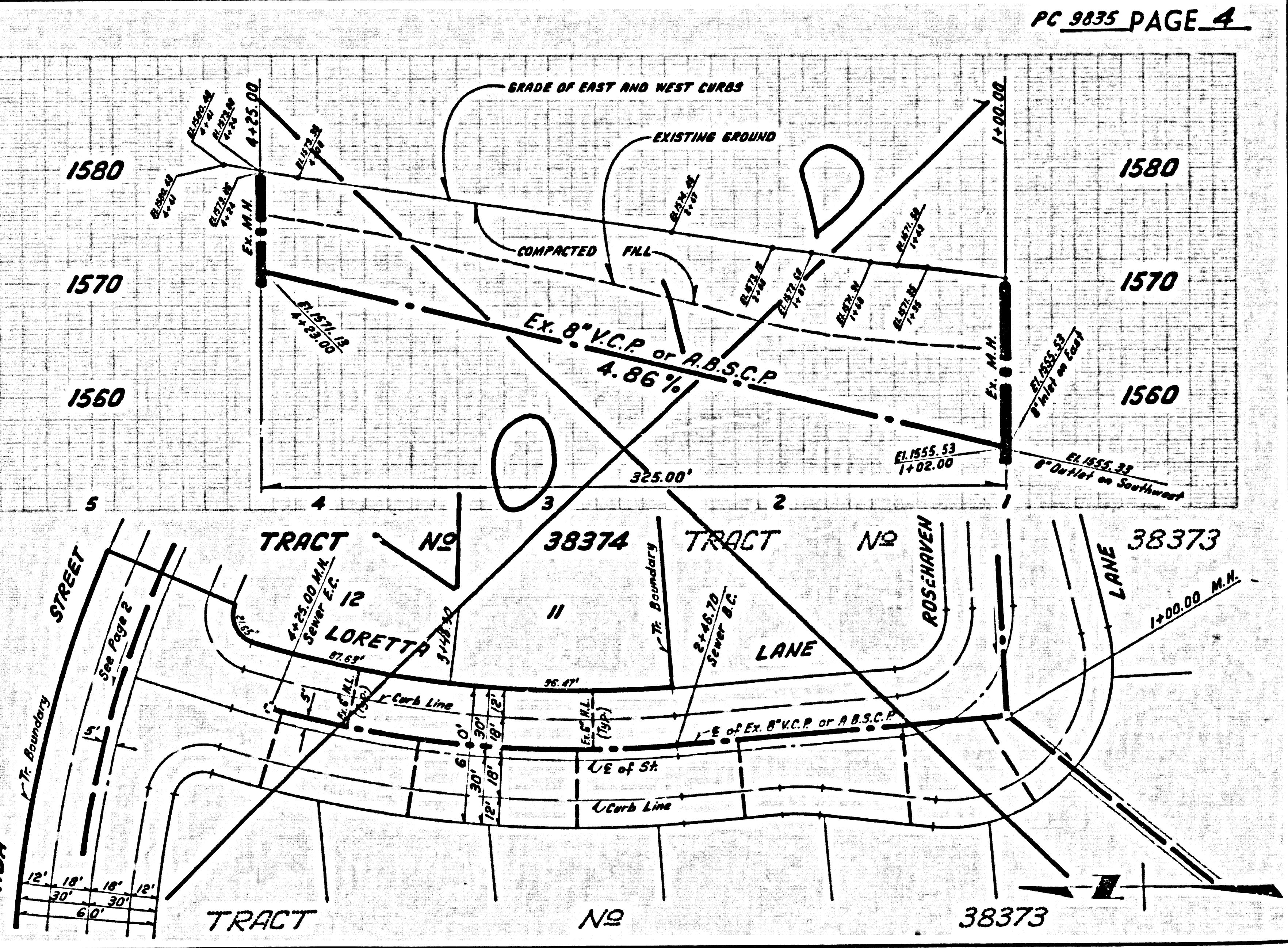
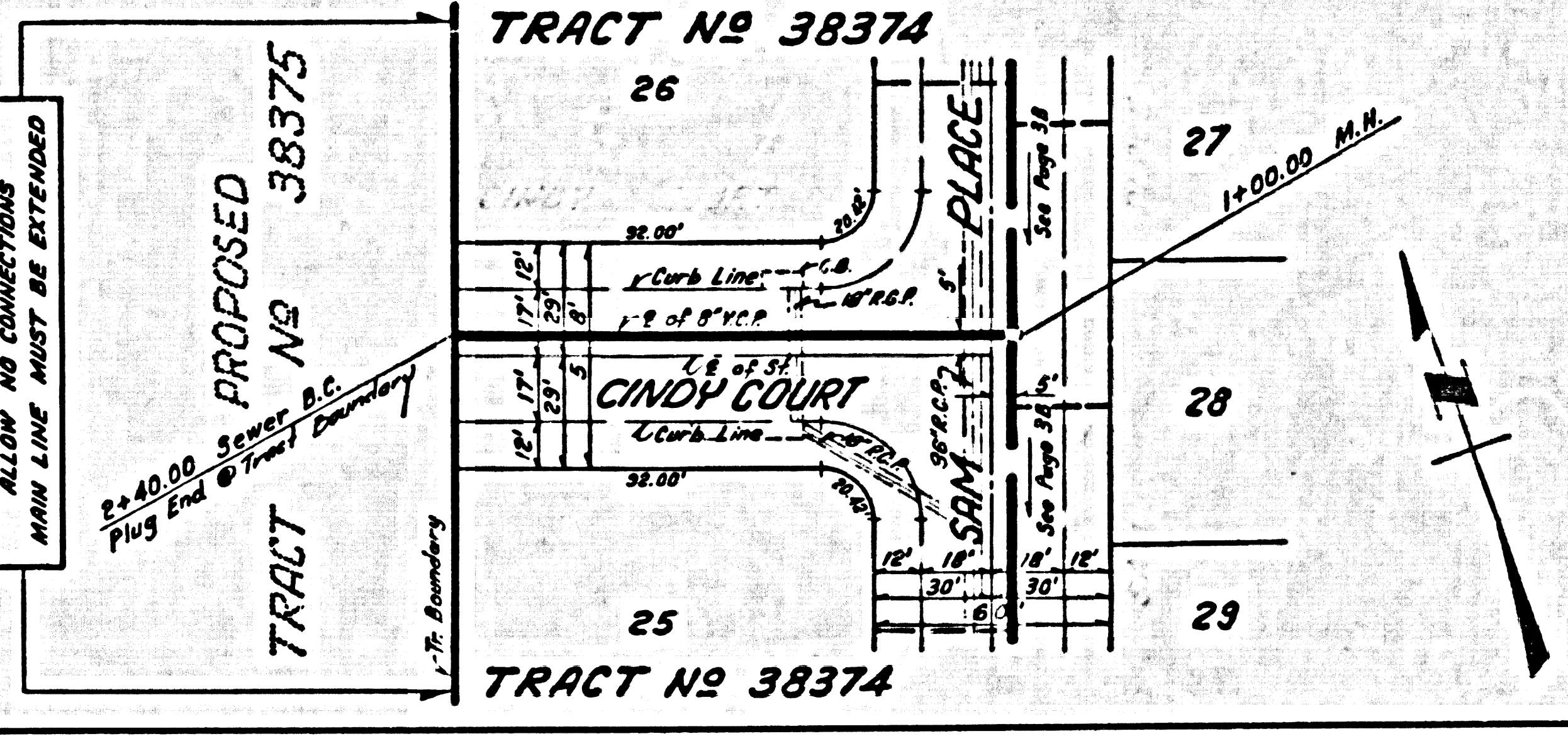
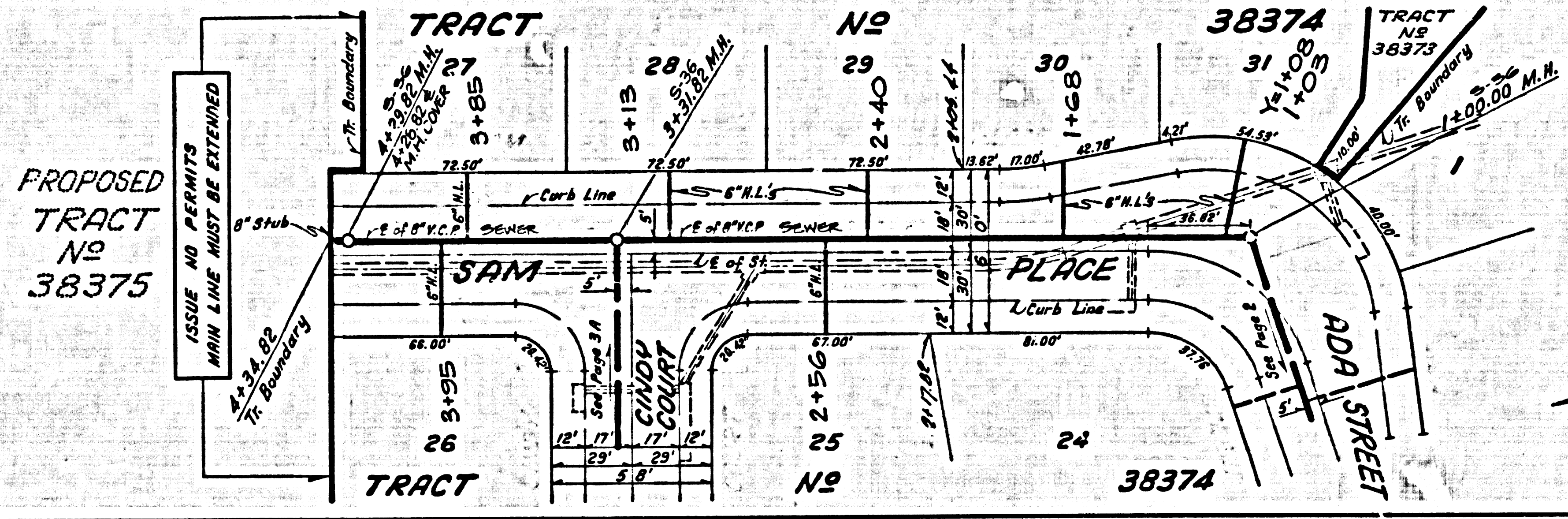
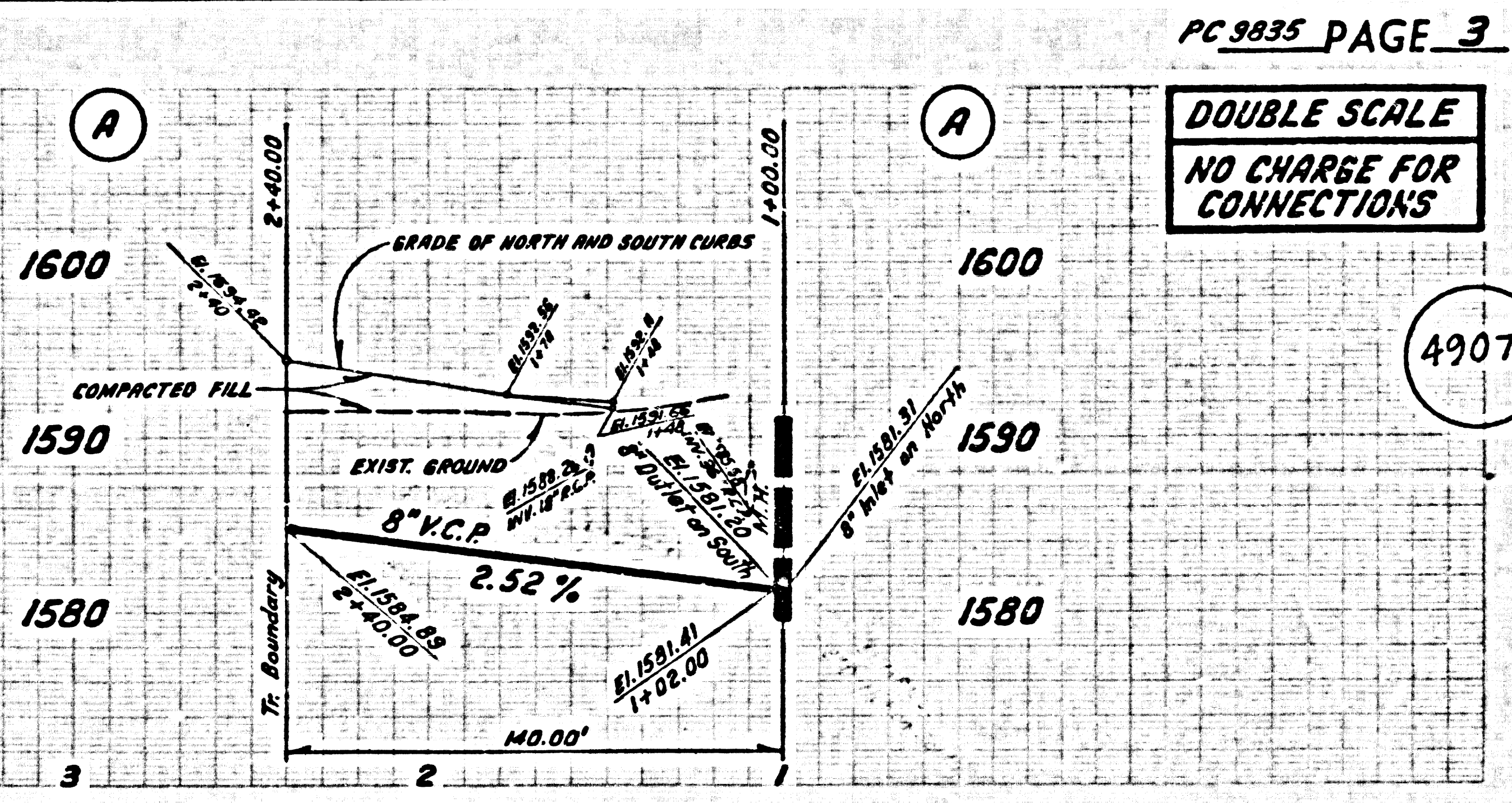
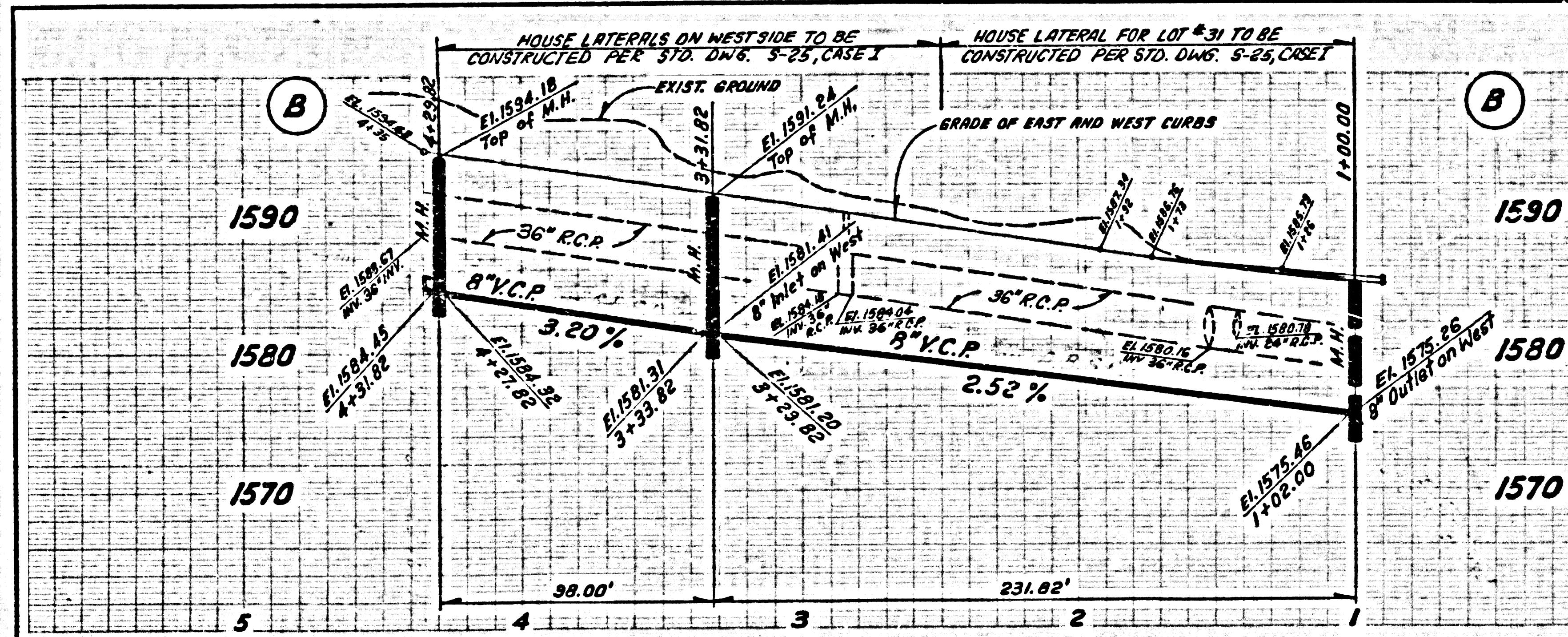
LEADS	5-1
MINIMUM BURIED SAFETY DIMENSIONS	5-2
STANDARD MANHOLE SET	5-3
BRIDGING FOR SEWER PIPE	5-4
CHASING AND ENCASING	5-5
WYE OR TE SUPPORT	5-6
ALLOWED TRENCH WIDTHS	5-7
LOCATING MANHOLE FRAMES AND COVERS	5-8
NON-REINFORCED PRECAST CONCRETE MANHOLE	5-9

COUNTY OF LOS ANGELES, CALIFORNIA
 STEPHEN J. KOONCE, COUNTY ENGINEER
 WALTER E. BARRISON, CHIEF ENGINEER
 APPROVED: *Met L. Murphy* 2-8-81
 CHECKED: *Dean E. ...* 2-18-81
 SANTA CLARITA VALLEY BLDG. DIST. B.B.



L.A. COUNTY SEWER SHEET NO. 1 SOUTHERN CALIFORNIA BLUEPRINT CO. 2036 479

1 2582 29 4586 ON 97



DOUBLE SCALE
NO CHARGE FOR
CONNECTIONS

49071

S 2882 2A 47882 of 11.91

SH

MB

BM

MB

SH