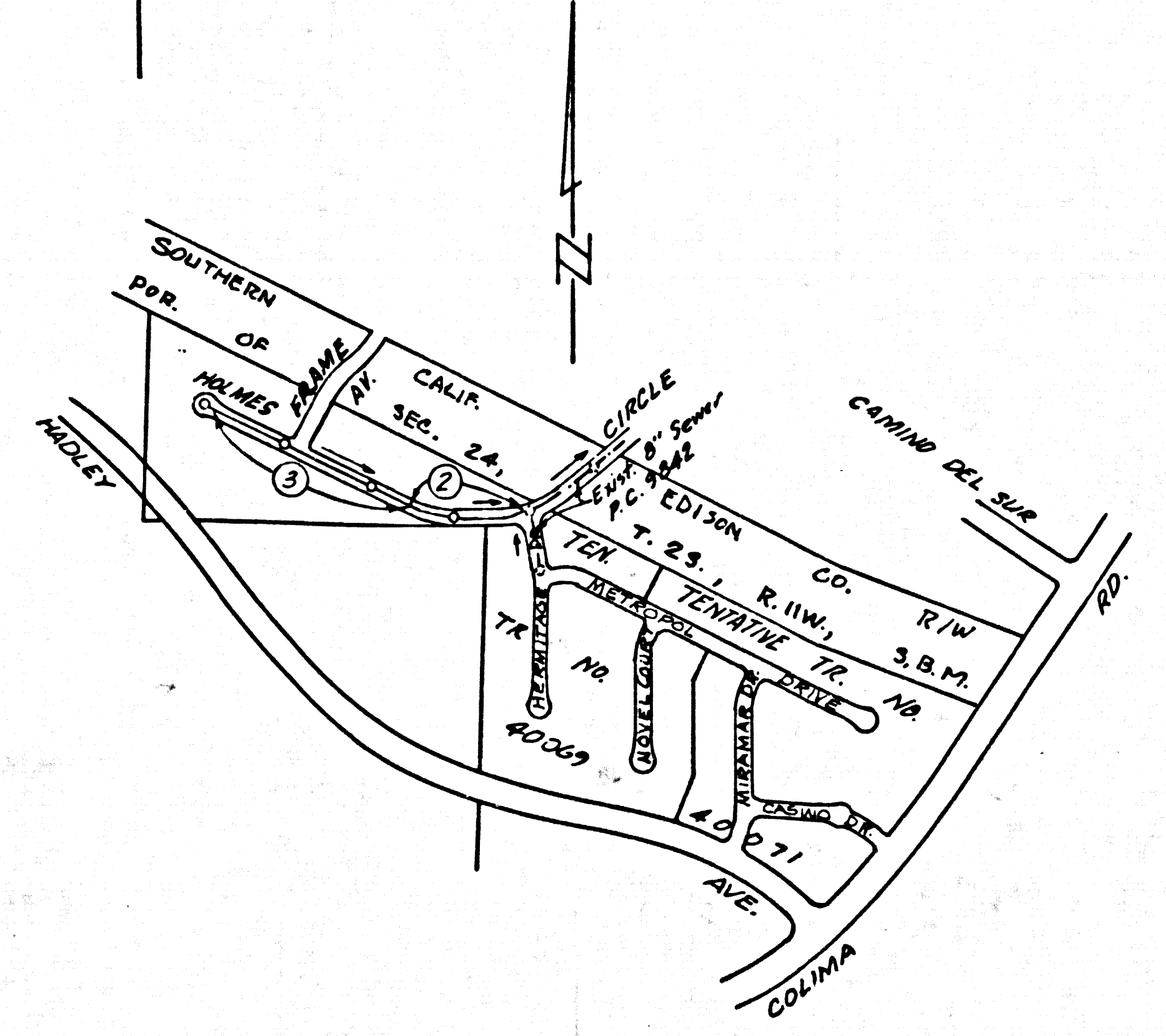


B.M. G 3182 ELEV. 708.788  
 R.D.B.M. TAG IN C.B. 42' W'LY &  
 COLIMA ROAD 1130' S'LY FROM  
 AVOCADO HILL WAY  
 (PRIVATE ROAD FOR AVOCADO GROVE TRACT)  
 WHITTIER QUAD. 1972.



INDEX MAP  
 SCALE: 1"=600'  
 P.C. 9843

Note: Numbers in Circles Indicate Page Numbers

**CONSTRUCTION NOTES CONTINUED:**  
 11. A 4.5" SOLID WALL PIPE MUST BE USED FOR HOSES AND HOUSE LATERAL CONNECTIONS TO A 6" S. COMPOSITE MAINLINE SEWER PIPE.  
 12. A 6" S. COMPOSITE PIPE SHALL BE INSTALLED IN ACCORDANCE WITH THE TABLE IN SECTION 203 PART 2E OF THE STANDARD SPECIFICATIONS.  
 13. PIPE DEFLECTION FITTINGS ARE REQUIRED FOR RADIUS OF CURVATURE LESS THAN 280' WHEN USING A.B.S.C.P.

Contractor agrees that he shall assume sole and complete responsibility for job site conditions during the course of construction of this Project, including safety of all persons and property; that this requirement shall apply continuously and not be limited to normal working hours; and that the Contractor shall defend, indemnify and hold the Owner and the Engineer harmless from any and all liability, real or alleged, in connection with the performance of work on this Project, excepting for liability arising from the sole negligence of the Owner or the Engineer.



**PRIVATE ENGINEERS NOTICE TO CONTRACTORS**  
 THE EXISTENCE AND APPROXIMATE LOCATIONS OF UNDERGROUND UTILITIES OR STRUCTURES SHOWN ON THESE PLANS WERE DETERMINED BY A SEARCH OF AVAILABLE PUBLIC RECORDS. TO THE BEST OF OUR KNOWLEDGE THERE ARE NO EXISTING UNDERGROUND UTILITIES OR STRUCTURES EXCEPT AS SHOWN ON THESE PLANS. THE CONTRACTOR IS REQUIRED TO TAKE DUE PRECAUTIONARY MEASURES TO PROTECT THE UTILITIES OR STRUCTURES SHOWN AND ANY OTHER UTILITIES OR STRUCTURES NOT OF RECORD OR NOT SHOWN ON THESE PLANS.

Robert R. Flores  
 ROBERT R. FLORES R.C.E. NO. 11349

ISSUE NO PERMITS UNTIL P.C. 9842 IS ACCEPTED

**GENERAL NOTES: DOUBLE SCALE**

- ELEVATIONS ARE IN FEET ABOVE U.S.C. & G.S. SEA LEVEL DATUM OF 1929.
- NO INTERFERENCES SHALL BE MADE IN THESE PLANS WITHOUT THE APPROVAL OF THE COUNTY ENGINEER.
- NO REPRESENTATIVE OF THE COUNTY ENGINEER WILL SURVEY OR LAY OUT ANY PORTION OF THE WORK.
- GRADES TO WHICH THIS IMPROVEMENT IS TO BE CONSTRUCTED ARE SHOWN ON PLANS AND PROFILES. GRADE POINTS FOR TOP OF CURB, CENTER LINE OF STREETS, OR CENTER LINE OF ALLEYS ARE SHOWN BY CIRCLES ON PROFILES AT ALL POINTS BETWEEN BENCHMARK POINTS THE GRADE SHALL BE ESTABLISHED SO AS TO CONFORM TO A STRAIGHT LINE DRAWN BETWEEN SAID DESIGNATED POINTS.
- THE PRIVATE ENGINEER SHALL FURNISH THE COUNTY ENGINEER WITH GRADE SHEETS AND STATIONING FOR ALL HOUSE LATERALS AND "T" OR "Y" BRANCHES AND SHALL PROVIDE STAKES FOR THEM AT THEIR PROPER LOCATIONS WITH STATIONING PLAINLY MARKED. ALL HOUSE LATERALS SHALL BE CONSTRUCTED IN A STRAIGHT ALIGNMENT AT RIGHT ANGLES FROM THE MAIN LINE SEWER EXCEPT AS SHOWN ON THE PLANS. HOUSE LATERALS FROM CHIMNEYS SHALL NOT HAVE AN ANGLE OF LESS THAN 45° WITH THE MAIN LINE SEWER. ANY CHANGE IN ALIGNMENT SHALL BE REQUESTED IN WRITING BY THE PRIVATE ENGINEER.
- THE PRIVATE ENGINEER SHALL FURNISH THE HOUSE LATERAL DEPTH AT THE PROPERTY LINE BELOW THE TOP OF CURB ELEVATION FOR EACH HOUSE LATERAL ON THE GRADE SHEET.
- BEFORE WORK CAN BE STARTED, THE CONTRACTOR MUST OBTAIN A PERMIT TO EXCAVATE IN COUNTY STREETS FROM THE L.A. COUNTY ROAD DEPT., DISTRICT OFFICE NO. 1, AND PAY A FEE TO THE COUNTY ENGINEER, 200 E. SHARPE AVE., 3RD FLOOR REGIONAL OFFICE, TO COVER THE COST OF CONSTRUCTION INSPECTION AND RECORD PLANS.
- IF WORK IS TO BE DONE IN A STATE HIGHWAY, A PERMIT MUST BE OBTAINED FROM THE STATE OF CALIFORNIA, DIVISION OF HIGHWAYS, 138 SOUTH SPRING STREET, LOS ANGELES, CALIFORNIA.
- APPROVAL OF THIS PLAN BY THE COUNTY OF LOS ANGELES DOES NOT CONSTITUTE A REPRESENTATION AS TO THE ACCURACY OF THE LOCATION OR OF THE EXISTENCE OR NON-EXISTENCE OF ANY UNDERGROUND UTILITY PIPE, OR STRUCTURE WITHIN THE LIMITS OF THIS PROJECT. THIS NOTE APPLIES TO ALL PAGES.
- REFER TO SECTION 7-18.4.1 OF THE STANDARD SPECIFICATIONS, REGARDING SAFETY ORDERS.
- BEFORE THE ISSUANCE OF THE REQUIRED SIGNATURE CERTIFICATION PERMIT BY THE COUNTY ENGINEER, THE CONTRACTOR SHALL OBTAIN A PERMIT TO EXCAVATE FROM THE STATE OF CALIFORNIA, DEPARTMENT OF INDUSTRIAL RELATIONS, DIVISION OF INDUSTRIAL SAFETY, AND SHALL FILE A CERTIFICATE OF WORKERS COMPENSATION INSURANCE WITH THE COUNTY ENGINEER. HANDED AS CERTIFICATE HOLDER TO BE NOTIFIED 30 DAYS PRIOR TO CANCELLATION OF POLICY.

**CONSTRUCTION NOTES:**

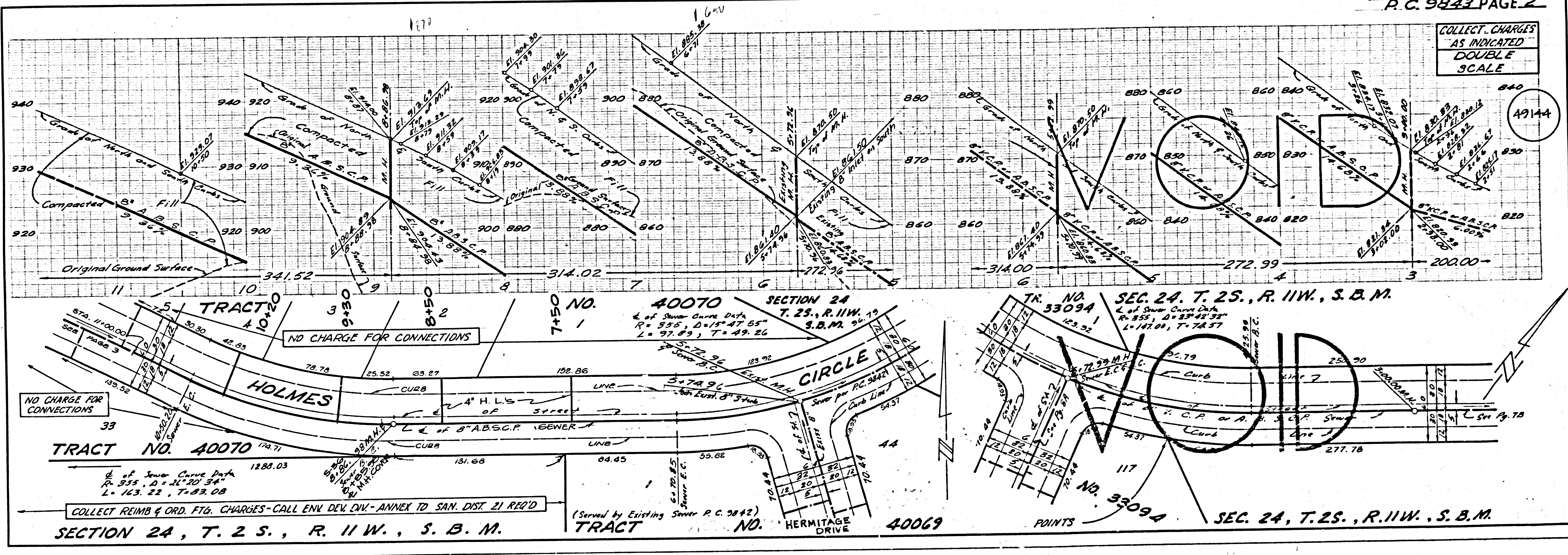
- WORK SHALL BE CONSTRUCTED ACCORDING TO THE STANDARD SPECIFICATIONS FOR PUBLIC WORKS CONSTRUCTION (1979 EDITION WITH 1980 SUPPLEMENTS) AND COUNTY ENGINEER SPECIAL PROVISIONS FOR THE CONSTRUCTION OF SANITARY SEWERS BATED WITH SECT. 203-2.1-2.2 AND SHALL BE PROCEEDED ONLY IN THE PRESENCE OF THE COUNTY ENGINEER.
- THE CONTRACTOR SHALL NOTIFY THE ENVIRONMENTAL ENHANCEMENT DIVISION (EED) 710 2ND ST., AT LEAST TWENTY (20) HOURS BEFORE STARTING ANY WORK UNDER THIS CONTRACT.
- HOUSE LATERALS TO BE CONSTRUCTED WITH INVERTS AT PROPERTY LINE & FEET BELOW CURB GRADE EXCEPT AS NOTED.
- WYE OR T BRANCHES MAY BE USED FOR CONNECTIONS TO MAINLINE SEWERS EXCEPT AS NOTED. IF A 6" S. C.P. IS USED ALL STRUCTURES SHALL BE FITTED WITH MANHOLES PER 2" S. OF PRECAST CONCRETE MANHOLES PER 2" S.C. EXCEPT AS NOTED.
- PROVIDE STAKES ON THE PROPERTY LINE OR PROPERTY LINES PRODUCED AT RIGHT ANGLES TO THE SEWER LINE AT THE CENTER LINE OF EACH MANHOLE.
- MANHOLE TOPS IN UNIMPROVED RIGHTS OF WAY TO BE SIX INCHES ABOVE FINISHED GRADE.
- VERTICAL CLAY PIPE JOINTS SHALL BE TYPE "B" OR "C" PER STANDARD SPECIFICATIONS SECTION 200-5.
- IF A POWER POLE IS WITHIN THREE FEET OF THE SEWER, THE SEWER SHALL BE ENCASED, PER 2-23, CASE II, TWO FEET ON EACH SIDE FROM THE POINT OF INTERFERENCE.
- IF DURING THE COURSE OF CONSTRUCTION IT IS DETERMINED THAT THERE IS LESS THAN FOUR FEET OF COVER OVER THE TOP OF A MAIN LINE OR HOUSE LATERAL V.C.P. WITH WHICH IS NOT INDICATED ON THE PLANS, THE PIPE SHALL BE ENCASED PER 2-23, CASE III UNLESS OTHERWISE APPROVED BY THE COUNTY ENGINEER.
- ALL JOINTS BETWEEN CAST IRON PIPE AND VITRIFIED CLAY PIPE SHALL BE MADE WITH A RUBBER SLEEVE JOINT, TYPE "C" OR "D", WITH GASKETS AS NECESSARY PER STANDARD SPECIFICATIONS SECTION 200-1. JOINTS WITH APPROVED FITTINGS SHALL BE TESTED FOR LEAKAGE PER SECTION 200-1.9 OF THE STANDARD SPECIFICATIONS. HIGHWAY REQUIREMENTS IN ACCORDANCE WITH PERMITS.
- INSURANCE ALL TRENCHES WITHIN PAVED AREAS TO MEET L.A. COUNTY ROAD DEPT. OR CALIFORNIA STATE HIGHWAY REQUIREMENTS IN ACCORDANCE WITH PERMITS.
- FULL COMPLIANCE WITH SECTION 200-1.5 OF THE SPECIAL PROVISIONS WILL BE REQUIRED FOR BACKFILL IN STREETS. CERTIFICATION OF BACKFILL COMPACTION AND SAND EQUIVALENTS BY A QUALIFIED, REGISTERED TESTING LABORATORY SHALL BE PROVIDED BY THE PERMITTEE PRIOR TO THE ISSUANCE OF A CERTIFICATE OF PARTIAL ACCEPTANCE.
- FULL COMPLIANCE WITH PART 2E OF THE SPECIAL PROVISIONS IS REQUIRED FOR THE INSTALLATION OF A 6" S. COMPOSITE PIPE.
- MINIMUM INVERTS, STOP BENCHES AND CLEAN-OUTS ARE REQUIRED FOR THE CONNECTION OF A 6" S. COMPOSITE PIPE TO AVAILABLE STRUCTURES.

PROFILE, ALIGNMENT AND GRADE OF  
**SANITARY SEWERS** PAGE 1  
 TO BE CONSTRUCTED IN  
**TRACT NO. 40070**  
**PRIVATE CONTRACT NO. 9843**  
 W.S. 37-E, 5  
 2 SHEETS, 2 PAGES  
 SCALE: VERT. 1"=4'  
 HORIZ. 1"=40'  
 APRIL, 1980  
 PREPARED IN THE OFFICES OF  
**KEMMERER ENGINEERING CO. INC.**  
 6705 SO. PAINTER AVE., WHITTIER CA. 90608 (213) 698-0791  
 BY: Robert R. Flores  
 REG. C. E. No. 11349

THE FOLLOWING LATEST REVERSED STANDARD PLANS ON FILE IN THE OFFICE OF THE COUNTY ENGINEER SHALL APPLY IN THE CONSTRUCTION OF THIS PROJECT.

LEGEND	2-1
MINIMUM PUBLIC SAFETY REQUIREMENTS	2-2
BRICK MANHOLE	2-3
STANDARD MANHOLE FITTING	2-4
WORKING FOR SEWER PIPE	2-5
CRACKING AND REPAIRS	2-6
WYE OR T SUPPORT	2-7
ALLOWABLE TRENCH WIDTHS	2-8
LOCKING MANHOLE FRAMES AND COVERS	2-9
NON-APPROVED PRECAST CONCRETE MANHOLES	2-10
BEDDING REQUIREMENTS FOR PLASTIC PIPE	2-11

COUNTY OF LOS ANGELES, CALIFORNIA  
 STEPHEN J. KIRK, COUNTY ENGINEER  
 WALTER E. GARRISON, CHIEF ENGINEER  
 APPROVED Jerry H. Miller 11/18/80  
 SANITARY REGIONAL ENGINEER  
 CHECKED Robert R. Flores 11/18/80  
 DATE  
 REG. C. E. NO. 11349  
 L.A. PLUENTE BLDG. DIST. 2.00



COLLECT. CHARGES  
 AS INDICATED  
**DOUBLE SCALE**

TRACT NO. 40070 SECTION 24 T. 2 S., R. 11 W., S.B.M.  
 NO CHARGE FOR CONNECTIONS  
 CURB  
 4" H.L.S. OF STREET  
 5" 74.96' S.B.M.  
 CIRCLE  
 TRACT NO. 40069  
 HERMITAGE DRIVE  
 SEC. 24, T. 2 S., R. 11 W., S. B. M.  
 SEC. 24, T. 2 S., R. 11 W., S. B. M.  
 TRACT NO. 33094  
 SEC. 24, T. 2 S., R. 11 W., S. B. M.  
 TRACT NO. 33094  
 SEC. 24, T. 2 S., R. 11 W., S. B. M.

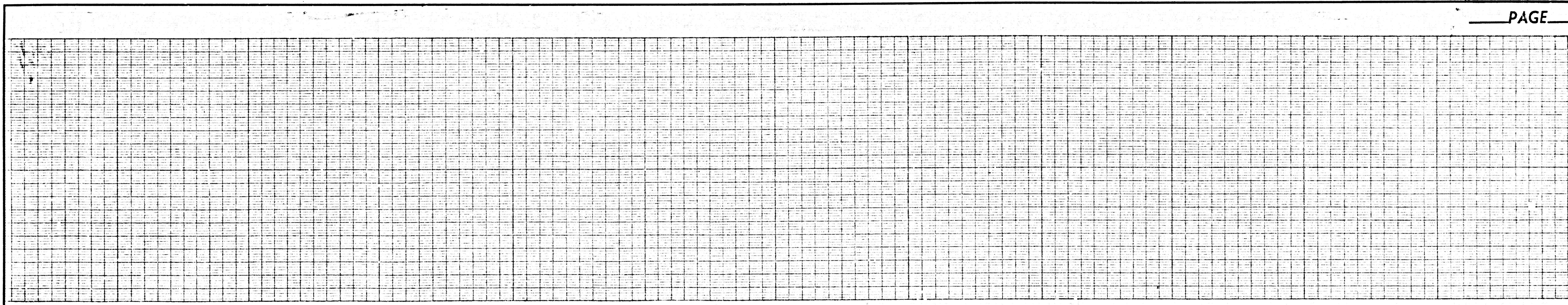
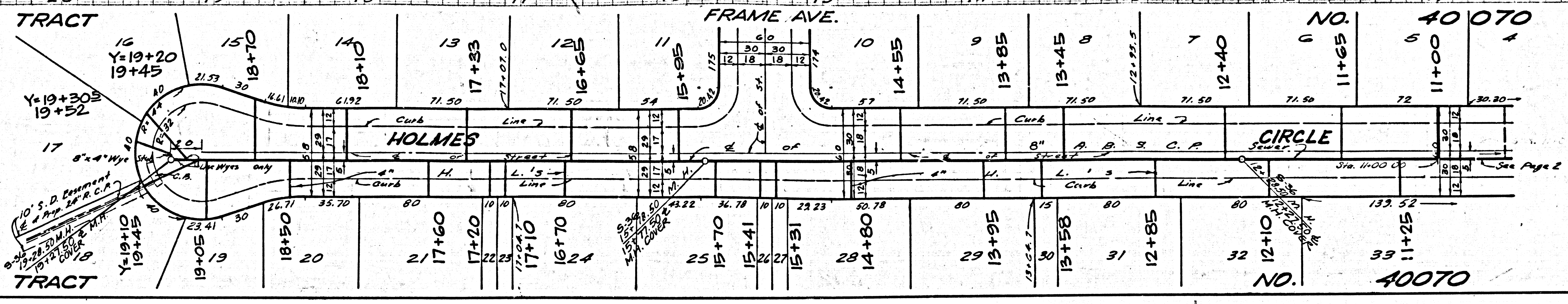
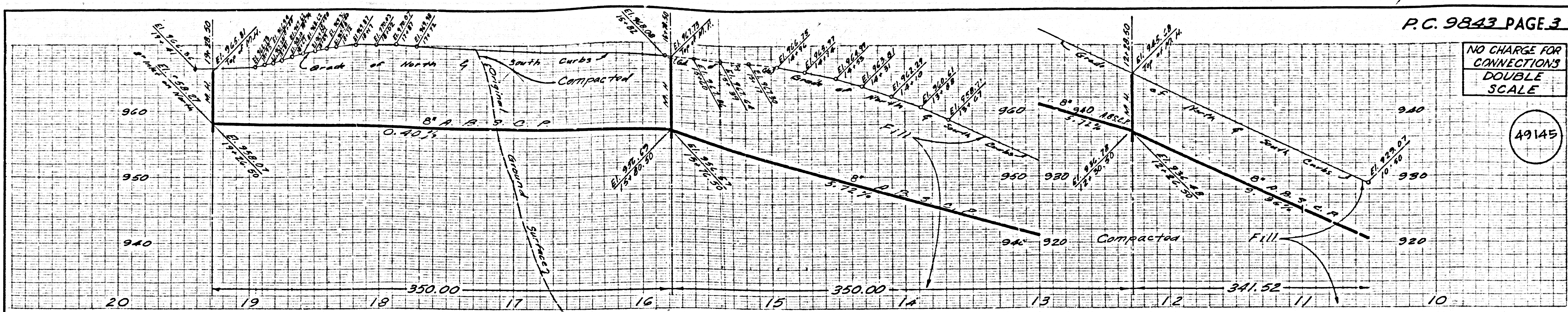
49143

49144

07004 ON TRACT

NO CHARGE FOR CONNECTIONS DOUBLE SCALE

49145



Case 24

0504 ON TRACT