

TRACT NO. 40071
PRIVATE CONTRACT NO. 9844

W.S. 37-E5
 2 SHEETS, 3 PAGES
 APRIL, 1980
 PREPARED IN THE OFFICES OF
KEMMERER ENGINEERING CO., INC.
 6703 S. PAINTER AVE. WHITTIER CA. 90608 (213) 698-0791
 BY: *Robert R. Flores*
 REG. C.E. No. 11349

49060

CONSTRUCTION NOTES CONTINUED:

16. FULL COMPLIANCE WITH PART 20 OF THE SPECIAL PROVISIONS IS REQUIRED FOR THE INSTALLATION OF A.B.S.C.P. CONCRETE PIPE.
17. MANHOLE WATER STOP GASKETS AND GASKETS ARE REQUIRED FOR THE CONNECTION AT A.B.S.C.P. MANHOLE TO MANHOLE STRUCTURES.
18. A.B.S.C.P. SOLID WALL PIPE MUST BE USED FOR MAIN AND BRANCH LATERAL CONNECTIONS TO A.B.S.C.P. MANHOLE STRUCTURES.
19. A.B.S.C.P. MANHOLE STRUCTURES SHALL BE BUILT IN CONFORMANCE WITH THE TABLE IN SECTION B.3 OF PART 20 OF THE SPECIAL PROVISIONS.
20. PIPE CONNECTION FITTINGS ARE REQUIRED FOR ALL JOINTS OF CURVED LINES LESS THAN 90° UNLESS SHOWN A.B.S.C.P.

PRIOR TO EXCAVATING BETWEEN STA. 1+00.00 AND STA. 1+30.00 ON PAGE 2 CALL 1-800-422-4133 TO HAVE GENERAL TELEPHONE CO. CABLE LOCATED.

Contractor agrees that he shall assume sole and complete responsibility for job site conditions during the course of construction of this Project, including safety of all persons and property; that this responsibility shall apply continuously and not be limited to normal working hours; and that the Contractor shall defend, indemnify and hold the Owner and the Engineer harmless from any and all liability, real or alleged, in connection with the performance of work on this Project, excepting for liability arising from the sole negligence of the Owner or the Engineer.

PRIVATE ENGINEERS NOTICE TO CONTRACTORS
 THE EXISTENCE AND APPROXIMATE LOCATIONS OF UNDERGROUND UTILITIES OR STRUCTURES SHOWN ON THESE PLANS WERE DETERMINED BY A SEARCH OF AVAILABLE PUBLIC RECORDS TO THE BEST OF OUR KNOWLEDGE THERE ARE NO EXISTING UNDERGROUND UTILITIES OR STRUCTURES EXCEPT AS SHOWN ON THESE PLANS. THE CONTRACTOR IS REQUIRED TO TAKE DUE PRECAUTIONARY MEASURES TO PROTECT THE UTILITIES OR STRUCTURES SHOWN AND ANY OTHER UTILITIES OR STRUCTURES NOT OF RECORD OR NOT SHOWN ON THESE PLANS.

Robert R. Flores
 ROBERT R. FLORES R.C.E. NO. 11349

NOTE: THE LOTS LISTED BELOW ARE SERVED BY P.C. 9842

LOTS	PAGES	LOTS	PAGES
6	18	7A	40
7	18	7B	39
8 THRU 11	39	6	

ISSUE NO PERMITS UNTIL P.C. 9842 IS ACCEPTED

GENERAL NOTES: DOUBLE SCALE

1. ELEVATIONS ARE IN FEET ABOVE U.S.C. & G.S. SEA LEVEL DATUM OF 1929.
2. NO REVISIONS SHALL BE MADE IN THESE PLANS WITHOUT THE APPROVAL OF THE COUNTY ENGINEER.
3. NO REPRESENTATIVE OF THE COUNTY ENGINEER WILL BE ON SITE AT ANY POINT OF THE WORK.
4. GRADES TO WHICH THIS IMPROVEMENT IS TO BE CONSTRUCTED ARE SHOWN ON PLANS AND PROFILES. GRADE POINTS FOR TOP OF CURBS, CENTER LINE OF STREETS, OR CENTER LINE OF ALLEYS ARE SHOWN BY CIRCLES ON PROFILES. AT ALL POINTS BETWEEN DESIGNATED GRADE POINTS THE GRADE SHALL BE ESTABLISHED SO AS TO CONFORM TO A STRAIGHT LINE BETWEEN SAID DESIGNATED POINTS.
5. THE PRIVATE ENGINEER SHALL FURNISH THE COUNTY ENGINEER WITH GRADE SHEETS AND STATIONING FOR ALL HOUSE LATERALS AND "T" OR "Y" BRANCHES AND SHALL PROVIDE STAKES FOR THEM AT THE PROPER LOCATIONS WITH STATIONING PLAINLY MARKED. ALL HOUSE LATERALS SHALL BE CONSTRUCTED IN A STRAIGHT ALIGNMENT AT RIGHT ANGLES FROM THE MAIN LINE SEWER EXCEPT AS SHOWN ON THE PLANS. HOUSE LATERALS FROM CHIMNEYS SHALL NOT HAVE AN ANGLE OF LESS THAN 45° WITH THE MAIN LINE SEWER. ANY CHANGE IN ALIGNMENT SHALL BE INDICATED IN WRITING BY THE PRIVATE ENGINEER.
6. THE PRIVATE ENGINEER SHALL FURNISH THE HOUSE LATERAL DEPTH AT THE PROPERTY LINE BELOW THE TOP OF CURB ELEVATION FOR EACH HOUSE LATERAL ON THE GRADE SHEET.
7. BEFORE WORK CAN BE STARTED, THE CONTRACTOR MUST OBTAIN A PERMIT TO EXCAVATE IN COUNTY STREETS FROM THE L.A. COUNTY ROAD DEPT., DISTRICT OFFICE NO. 1, AND PAY A FEE TO THE COUNTY ENGINEER, 801 E. BONITA AVE., SAN DIMAS REGIONAL OFFICE, TO COVER THE COST OF CONSTRUCTION INSPECTION AND RECORD PLANS.
8. IF WORK IS TO BE DONE IN A STATE HIGHWAY, A PERMIT MUST BE OBTAINED FROM THE STATE OF CALIFORNIA, DIVISION OF HIGHWAYS, 126 SOUTH BRIDGE STREET, LOS ANGELES, CALIFORNIA.
9. APPROVAL OF THIS PLAN BY THE COUNTY OF LOS ANGELES DOES NOT CONSTITUTE A REPRESENTATION AS TO THE ACCURACY OF THE LOCATION OF OR THE EXISTENCE OR NON-EXISTENCE OF ANY UNDERGROUND UTILITY PIPE, OR STRUCTURE WITHIN THE LIMITS OF THE PROJECT. THIS NOTE APPLIES TO ALL PAGES.
10. REFER TO SECTION 9.1.1.1 OF THE STANDARD SPECIFICATIONS, REGARDING SAFETY ORDERS.
11. PRIOR TO THE ISSUANCE OF THE REQUIRED SEWER CONSTRUCTION PERMIT BY THE COUNTY ENGINEER THE CONTRACTOR SHALL OBTAIN A PERMIT TO EXCAVATE FROM THE COUNTY ENGINEER, THE COUNTY ENGINEER, DIVISION OF INDUSTRIAL SAFETY AND INDUSTRIAL RELATIONS, DIVISION OF INDUSTRIAL SAFETY, AND SHALL FILE A CERTIFICATE OF WORKERS' COMPENSATION INSURANCE WITH THE COUNTY ENGINEER. THE CERTIFICATE IS REQUIRED TO BE NOTIFIED 30 DAYS PRIOR TO CANCELLATION OF POLICY.

CONSTRUCTION NOTES:

1. WORK SHALL BE CONSTRUCTED ACCORDING TO THE STANDARD SPECIFICATIONS FOR PUBLIC WORKS CONSTRUCTION (1978 EDITION WITH 1980 SUPPLEMENT) AND COUNTY ENGINEER SPECIAL PROVISIONS FOR THE CONSTRUCTION OF SANITARY SEWERS DATED SEPTEMBER, 1978. REVISIONS SHALL BE INDICATED ONLY IN THE PRESENCE OF THE COUNTY ENGINEER.
2. THE CONTRACTOR SHALL NOTIFY THE ENVIRONMENTAL DEVELOPMENT DIVISION, PHONE 213-738-2295, AT LEAST TWENTY-FOUR HOURS BEFORE STARTING ANY WORK UNDER THIS CONTRACT.
3. HOUSE LATERALS TO BE CONSTRUCTED WITH INVERTS AT PROPERTY LINE & FEET BELOW CURB GRADE EXCEPT AS NOTED.
4. ALL JOINTS BETWEEN CAST IRON PIPE AND VITREOUS CLAY PIPE SHALL BE MADE WITH A RUBBER SLEEVE JOINT, TYPE "C" OR "D".
5. ALL STRUCTURES SHALL BE BUILT TO THE STANDARD SPECIFICATIONS AND SPECIAL PROVISIONS.
6. PROVIDE STAKES ON THE PROPERTY LINE OR PROJECT LINE PRODUCED AT RIGHT ANGLES TO THE SEWER LINE AT THE CENTER LINE OF EACH MANHOLE.
7. MANHOLE TOPS IN UNIMPROVED AREAS OF WAYS TO BE SIX INCHES ABOVE FINISHED GRADE.
8. VITREOUS CLAY PIPE JOINTS SHALL BE TYPE "D" OR "E" PER STANDARD SPECIFICATIONS SECTION 206-2.
9. IF A POWER POLE IS WITHIN THREE FEET OF THE SEWER, THE SEWER SHALL BE ENCASED, PER S-25, CASE II, TWO FEET ON EACH SIDE FROM THE POINT OF INTERFERENCE.
10. IF DURING THE COURSE OF CONSTRUCTION IT IS DETERMINED THAT THERE IS LESS THAN FOUR FEET OF COVER OVER THE TOP OF A MAIN LINE OF HOUSE LATERAL V.C.P. SEWER WHICH IS NOT INDICATED ON THE PLANS, THE PIPE SHALL BE ENCASED PER S-25, CASE II UNLESS OTHERWISE APPROVED BY THE COUNTY ENGINEER.
11. ALL JOINTS BETWEEN CAST IRON PIPE AND VITREOUS CLAY PIPE SHALL BE MADE WITH A RUBBER SLEEVE JOINT, TYPE "C" OR "D".
12. ALL JOINTS BETWEEN VITREOUS CLAY PIPE AND VITREOUS CLAY PIPE SHALL BE MADE WITH A RUBBER SLEEVE JOINT, TYPE "C" OR "D".
13. REPAIRS TO ALL TRENCHES WITHIN PAVED AREAS TO MEET L.A. COUNTY ROAD DEPT. OR CALIFORNIA STATE HIGHWAY REQUIREMENTS IN ACCORDANCE WITH PERMITS.
14. FULL COMPLIANCE WITH SECTION 206.1.1 OF THE SPECIAL PROVISIONS WILL BE REQUIRED FOR RACEPIT IN STREETS. CERTIFICATION OF RACEPIT COMPLETION AND SAND EQUIVALENTS BY A QUALIFIED, REGISTERED TESTING LABORATORY SHALL BE PROVIDED BY THE PERMITTEE PRIOR TO THE ISSUANCE OF A CERTIFICATE OF PARTIAL OCCUPANCE.
15. SPECIAL BRACKETS OR DESIGNATED AREAS: A. BRACKETS FOR THE PROTECTION OF EXISTING UTILITIES SHALL BE PROVIDED BY THE BUILDING AND SAFETY DIVISION. B. BRACKETS FOR THE PROTECTION OF EXISTING UTILITIES SHALL BE PROVIDED BY THE BUILDING AND SAFETY DIVISION. C. BRACKETS FOR THE PROTECTION OF EXISTING UTILITIES SHALL BE PROVIDED BY THE BUILDING AND SAFETY DIVISION. D. BRACKETS FOR THE PROTECTION OF EXISTING UTILITIES SHALL BE PROVIDED BY THE BUILDING AND SAFETY DIVISION.

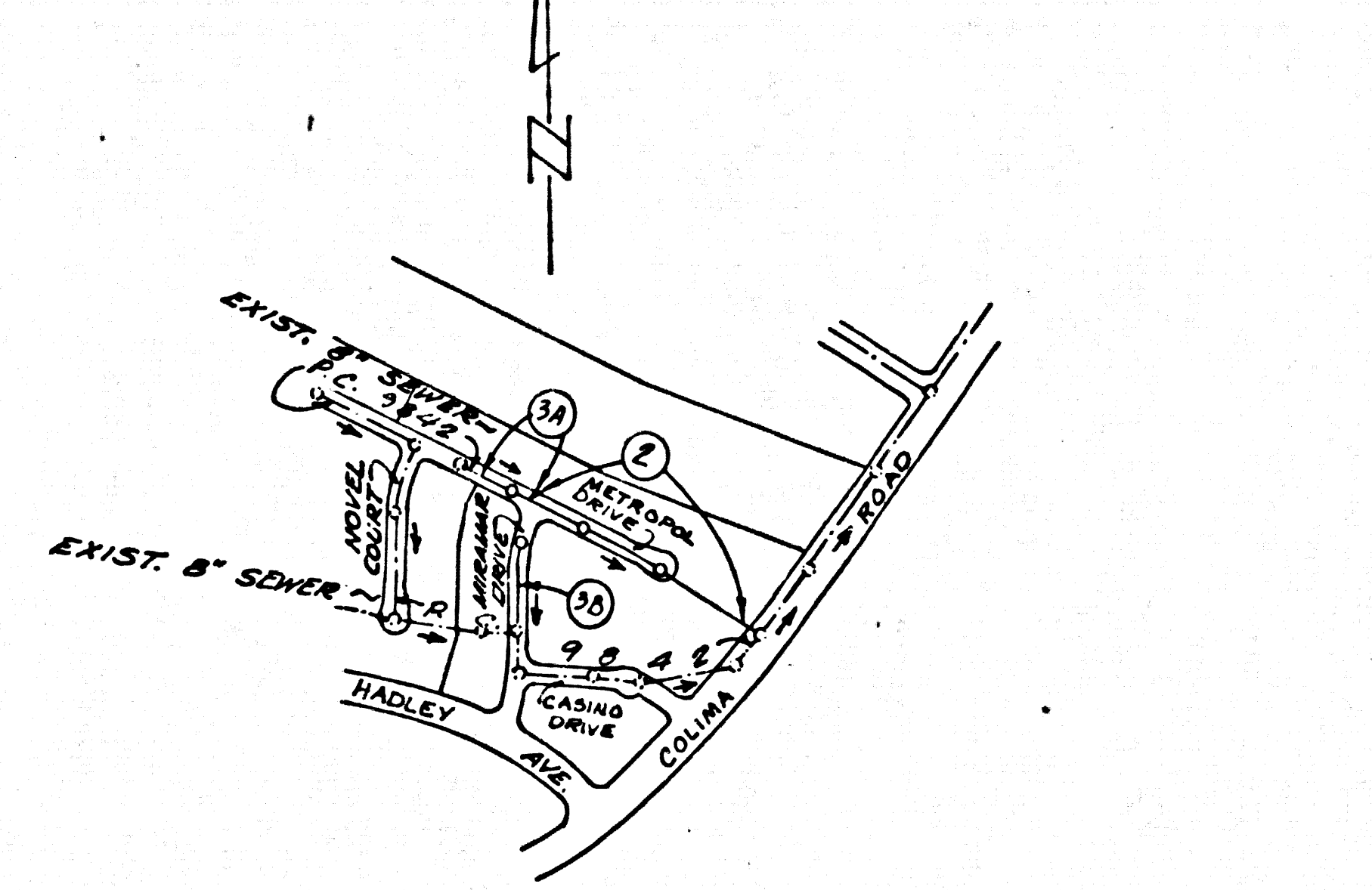
THE FOLLOWING LATEST REVISED STANDARD PLANS ON FILE IN THE OFFICE OF THE COUNTY ENGINEER SHALL APPLY IN THE CONSTRUCTION OF THIS PROJECT:

LEGEND	1-1
MINIMUM PUBLIC SAFETY REQUIREMENTS	1-2
BRICK MANHOLE	1-3
STANDARD MANHOLE STEP	1-4
WOODING FOR SEWER PIPE	1-5
CLADDING AND BRICKWORK	1-6
WYS ON THE SUPPORT	1-7
ALLOWABLE TRENCH WIDTHS	1-8
SECOND MANHOLE FRAME AND COVER	1-9
HOUSINGWORKED PRECAST CONCRETE MANHOLES	1-10
BELOWING REINFORCEMENTS FOR PLASTIC PIPE	1-11
ANCHOR BLOCKS	1-12
COURTNEY PIPE & BELL	1-13
ENGLISH PROTECTION	1-14

COUNTY OF LOS ANGELES, CALIFORNIA
 STEPHEN J. KOENIG, COUNTY ENGINEER
 WALTER E. GARRISON, CHIEF ENGINEER
 APPROVED: *John H. Miller* 11/16/80
 JOHN H. MILLER, COUNTY ENGINEER
 APPROVED: *Frank R. Davis* 1/6/81
 FRANK R. DAVIS, COUNTY ENGINEER
 CHECKED: *Robert R. Flores* 1/16/80
 REG. C.E. NO. 11349
 16883
 LA PUENTE BLDG. DIST. 200.

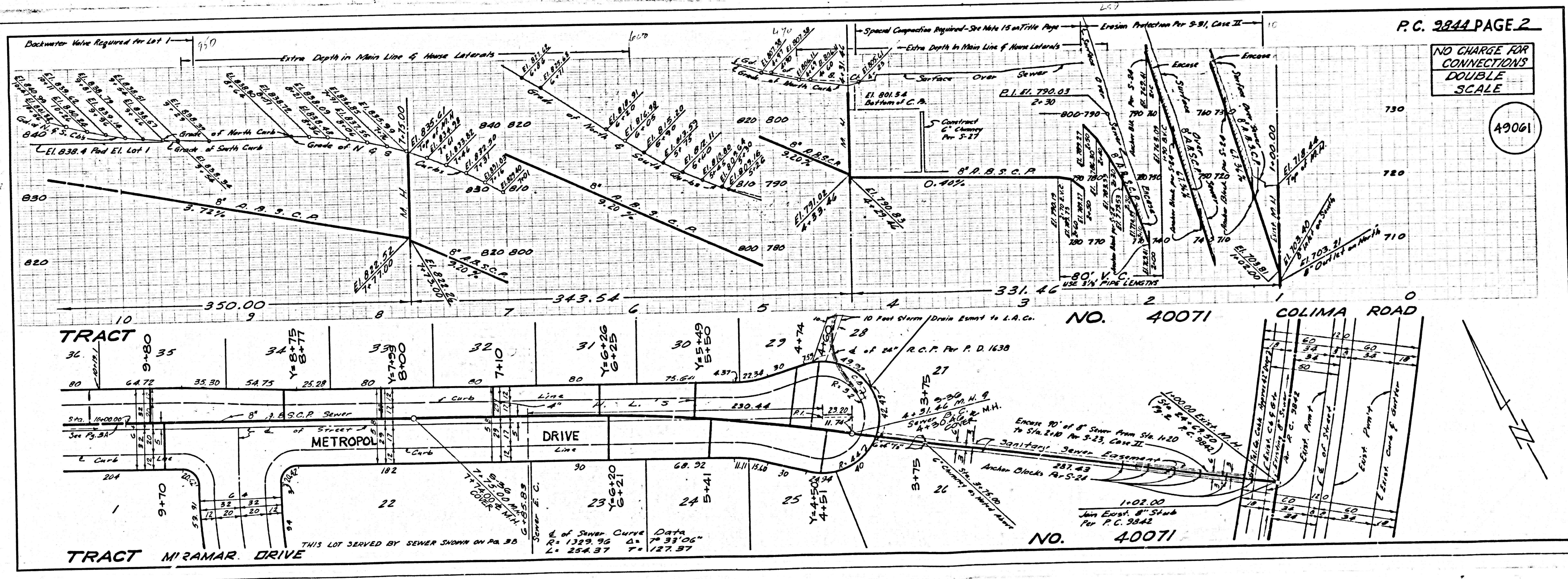
B.M. C.G. 3122 ELEV. 708.742
 R.O.B.M. TAG IN C.B. 42 WAY & COLIMA ROAD 1530 317 FROM ARCADADO HILL WY (PVT. ROAD FOR ARCADADO GROVE TRACT) WHITTIER QUAD. 1925

NO CONNECTION FOR THE DISPOSAL OF INDUSTRIAL WASTES SHALL BE MADE TO SEWERS SHOWN ON THESE DRAWINGS UNTIL A PERMIT FOR INDUSTRIAL WASTEWATER DISCHARGE HAS BEEN ISSUED BY THE SANITATION DISTRICTS FOR SAID CONNECTION.



INDEX MAP
 SCALE 1"=600'
 P.C. 9844

Note: Numbers in Circles Indicate Page Numbers



P.C. 9844 PAGE 2

NO CHARGE FOR CONNECTIONS
 DOUBLE SCALE

49061

17004 ON TRACT

NO CHARGE FOR CONNECTIONS DOUBLE SCALE

49062

