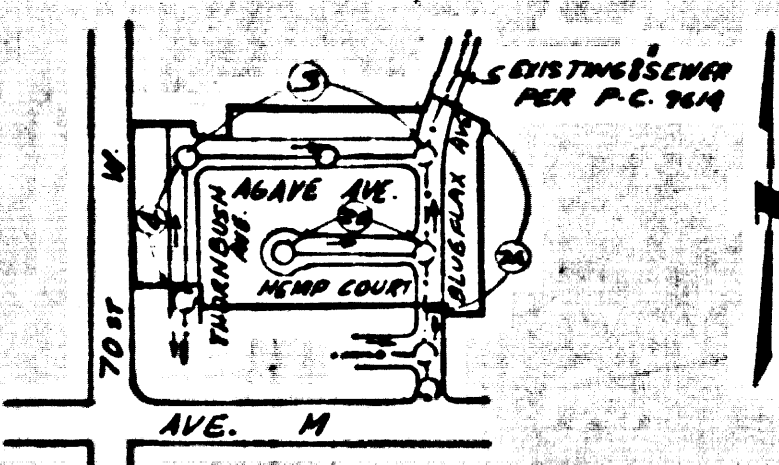


B.M. 905 ELEV. 2610.028
 C.S.B.M. MON. 5" UP 76' N/O 44' W/O
 E. INT. AVE. N 70' W 5' N/O 140' P/O
 NO. 11362E MKD B.M. 104-17. 1958
 LANCASTER QUAD. 1973

NOTE: NUMBERS IN CIRCLES
 INDICATE PAGE NUMBERS.



INDEX MAP
 SCALE: 1"=600'
 TRACT NO. 32942
 P.C. 9848

NO CONNECTION FOR THE DISPOSAL OF INDUSTRIAL WASTEWATER SHALL BE MADE TO SEWER MAINS OR TO SEWER DRAINAGE SYSTEMS UNTIL A PERMIT FROM INDUSTRIAL WASTEWATER CHARGE HAS BEEN ISSUED BY THE SANITATION DISTRICT.
 BEFORE BREAKING INTO EXISTING SANITARY OR SEWER MAINS, THE CONTRACTOR SHALL OBTAIN A PERMIT FROM THE SANITATION DISTRICT. THE CONTRACTOR SHALL BE RESPONSIBLE FOR THE PROTECTION OF ALL UTILITIES AND STRUCTURES UNDER THE GROUND. THE CONTRACTOR SHALL BE RESPONSIBLE FOR THE PROTECTION OF ALL UTILITIES AND STRUCTURES UNDER THE GROUND. THE CONTRACTOR SHALL BE RESPONSIBLE FOR THE PROTECTION OF ALL UTILITIES AND STRUCTURES UNDER THE GROUND.

DO NOT ISSUE HOUSE CONNECTION PERMITS UNTIL OUTLET SEWER P.C. 9614 IS ACCEPTED

GENERAL NOTES:

1. REVISIONS ARE IN PENCIL AND SHALL BE MADE IN THREE PLANS WITHOUT THE APPROVAL OF THE COUNTY ENGINEER.
2. NO REVISIONS SHALL BE MADE IN THREE PLANS WITHOUT THE APPROVAL OF THE COUNTY ENGINEER.
3. NO REPRESENTATIVE OF THE COUNTY ENGINEER WILL SURVEY OR LAY OUT ANY PORTION OF THE WORK.
4. GRADES TO WHICH THIS IMPROVEMENT IS TO BE CONSTRUCTED ARE SHOWN ON PLANS AND PROFILE. GRADE POINTS FOR TOP OF CURBS, CENTER LINE OF STREETS, OR CENTER LINE OF ALLEYS ARE SHOWN BY CIRCLES OR TRIANGLES. AT ALL POINTS BETWEEN INTERMEDIATE POINTS THE GRADE SHALL BE ESTABLISHED TO A STRAIGHT LINE BETWEEN SAID INTERMEDIATE POINTS.
5. THE PRIVATE ENGINEER SHALL FURNISH THE COUNTY ENGINEER WITH GRADE SHEETS AND STATIONING FOR ALL HOUSE LATERALS AND 4" OR 6" BRANCHES AND SHALL PROVIDE STAKE FOR THEM AT THEIR PROPER LOCATIONS WITH STATIONING PLAINLY MARKED. ALL HOUSE LATERALS SHALL BE CONSTRUCTED IN A STRAIGHT ALIGNMENT AT RIGHT ANGLES FROM THE MAIN LINE SEWER EXCEPT AS SHOWN. ON THE PLANE, HOUSE LATERALS FROM CHIMNEYS SHALL NOT HAVE AN ANGLE OF LESS THAN 20° WITH THE MAIN LINE SEWER. ANY CHANGE IN ALIGNMENT SHALL BE REQUESTED IN WRITING BY THE PRIVATE ENGINEER.
6. THE PRIVATE ENGINEER SHALL FURNISH THE HOUSE LATERAL PERMITS AT THE PROPERTY LINE BELOW THE TOP OF CURB ELEVATION FOR EACH HOUSE LATERAL ON THE GRADE SHEET.
7. BEFORE WORK CAN BE STARTED, THE CONTRACTOR MUST OBTAIN A PERMIT TO EXCAVATE IN COUNTY STREETS FROM THE L.A. COUNTY ROAD DEPT., DISTRICT OFFICE NO. 8, AND PAY A FEE TO THE COUNTY ENGINEER, 350 S. VERMONT AVE., RM. 508, L.A. 8, CALIF., TO COVER THE COST OF CONSTRUCTION INSPECTION AND RECORD PLANS.
8. IF WORK IS TO BE DONE IN A STATE HIGHWAY, A PERMIT MUST BE OBTAINED FROM THE STATE OF CALIFORNIA, DIVISION OF HIGHWAYS, 130 SOUTH SPRING STREET, LOS ANGELES, CALIFORNIA.
9. APPROVAL OF THIS PLAN BY THE COUNTY OF LOS ANGELES DOES NOT CONSTITUTE A REPRESENTATION AS TO THE ACCURACY OF THE LOCATION OF OR THE EXISTENCE OR NON-EXISTENCE OF ANY UNDERGROUND UTILITY PIPE, OR STRUCTURE WITHIN THE LIMITS OF THE PROJECT. THIS NOTE APPLIES TO ALL PAGES.
10. REFER TO SECTION 7 (ALL) OF THE STANDARD SPECIFICATIONS, REGARDING SANITARY DRAINAGE.
11. PRIOR TO THE ISSUANCE OF THE STANDARD SPECIFICATIONS FOR PUBLIC WORKS CONSTRUCTION (1973 EDITION) AND FILE WITH THE COUNTY ENGINEER COPIES OF A PERMIT TO EXCAVATE IN COUNTY STREETS FROM THE LOS ANGELES COUNTY ROAD DEPARTMENT, A PERMIT FOR EXCAVATIONS AND TRENCHES FROM THE DEPT. OF CALIFORNIA DIVISION OF INDUSTRIAL SAFETY AND A CERTIFICATE OF INDUSTRIAL COMPLIANCE FROM THE COUNTY ENGINEER, 350 S. VERMONT AVE., LOS ANGELES, CALIFORNIA 90013, MARKED AS THE CERTIFICATE NUMBER TO BE OBTAINED 30 DAYS PRIOR TO CANCELLATION OF PERMIT.

CONSTRUCTION NOTES:

1. WORK SHALL BE CONSTRUCTED ACCORDING TO THE STANDARD SPECIFICATIONS FOR PUBLIC WORKS CONSTRUCTION (1973 EDITION) WITH 1970 SUPPLEMENTS AND COUNTY ENGINEER SPECIAL PROVISIONS FOR THE CONSTRUCTION OF SANITARY SEWERS DATED SEPT. 21, 1975.
2. THE CONTRACTOR SHALL NOTIFY THE ENVIRONMENTAL DEVELOPMENT DEPARTMENT BY TELEPHONE (213) 473-1167 AT LEAST TWENTY-FOUR HOURS BEFORE ANY WORK UNDER THIS CONTRACT.
3. HOUSE LATERALS TO BE CONSTRUCTED WITH INVERTS AT PROPERTY LINE & PER SHALL SHOW 2" DIA. GRADE EXCEPT AS NOTED.
4. ALL STRUCTURES SHALL BE BUILT WITH BRICK MASONRY PER S.B. OR PER CALIFORNIA STATE HIGHWAY REQUIREMENTS IN ACCORDANCE WITH PERMITS.
5. PROVIDE GRADES ON THE PROPERTY LINE OR PROPERTY LINE PROFILES AT RIGHT ANGLES TO THE SEWER LINE AT THE CENTER LINE OF EACH MANHOLE.
6. MANHOLE TOPS IN UNIMPROVED PORTS OF WAY TO BE SIX INCHES ABOVE FINISHED GRADE.
7. WITHIN CLAY PIPE JOINTS SHALL BE TYPE "D". OR "F" PER STANDARD SPECIFICATIONS SECTION 818.2.
8. IF A POWER POLE IS WITHIN THREE FEET OF THE SEWER, THE SEWER SHALL BE ENCASED PER S.B. CASE 32 TWO FEET ON EACH SIDE FROM THE POINT OF INTERFERENCE.
9. IF DURING THE COURSE OF CONSTRUCTION IT IS DETERMINED THAT THERE IS LESS THAN FOUR FEET OF COVER OVER THE TOP OF A MAIN LINE OR HOUSE LATERAL V.C.P. SEWER WHICH IS NOT INDICATED ON THE PLANS, THE PIPE SHALL BE ENCASED PER S.B. CASE 32 UNLESS OTHERWISE APPROVED BY THE COUNTY ENGINEER.
10. ALL JOINTS BETWEEN CAST IRON PIPE AND WITHIN CLAY PIPE SHALL BE MADE WITH A RUBBER GASKET JOINT, TYPE "C" OR "D", FIFTH BARRING IF NECESSARY FOR STANCHIONS, SECTION 818.4.
11. REFER TO SECTION 7 (ALL) OF THE STANDARD SPECIFICATIONS FOR PUBLIC WORKS CONSTRUCTION (1973 EDITION) AND FILE WITH THE COUNTY ENGINEER COPIES OF A PERMIT TO EXCAVATE IN COUNTY STREETS FROM THE LOS ANGELES COUNTY ROAD DEPARTMENT, A PERMIT FOR EXCAVATIONS AND TRENCHES FROM THE DEPT. OF CALIFORNIA DIVISION OF INDUSTRIAL SAFETY AND A CERTIFICATE OF INDUSTRIAL COMPLIANCE FROM THE COUNTY ENGINEER, 350 S. VERMONT AVE., LOS ANGELES, CALIFORNIA 90013, MARKED AS THE CERTIFICATE NUMBER TO BE OBTAINED 30 DAYS PRIOR TO CANCELLATION OF PERMIT.
12. RESURFACE ALL TRENCHES WITHIN PAVED AREAS TO MEET L.A. COUNTY ROAD DEPT. OR CALIFORNIA STATE HIGHWAY REQUIREMENTS IN ACCORDANCE WITH PERMITS.
13. FULL COMPLIANCE WITH SECTION 818.1.3 OF THE STANDARD SPECIFICATIONS SHALL BE REQUIRED FOR EACH FEET IN STREET CERTIFICATION OF EACH CONNECTION AND LAND ADJACENTS OF A CHANGING, REGISTERED TESTING LABORATORY SHALL BE PROVIDED BY THE PERMITTEE PRIOR TO THE ISSUANCE OF A CERTIFICATE OF PARTIAL ACCEPTANCE.

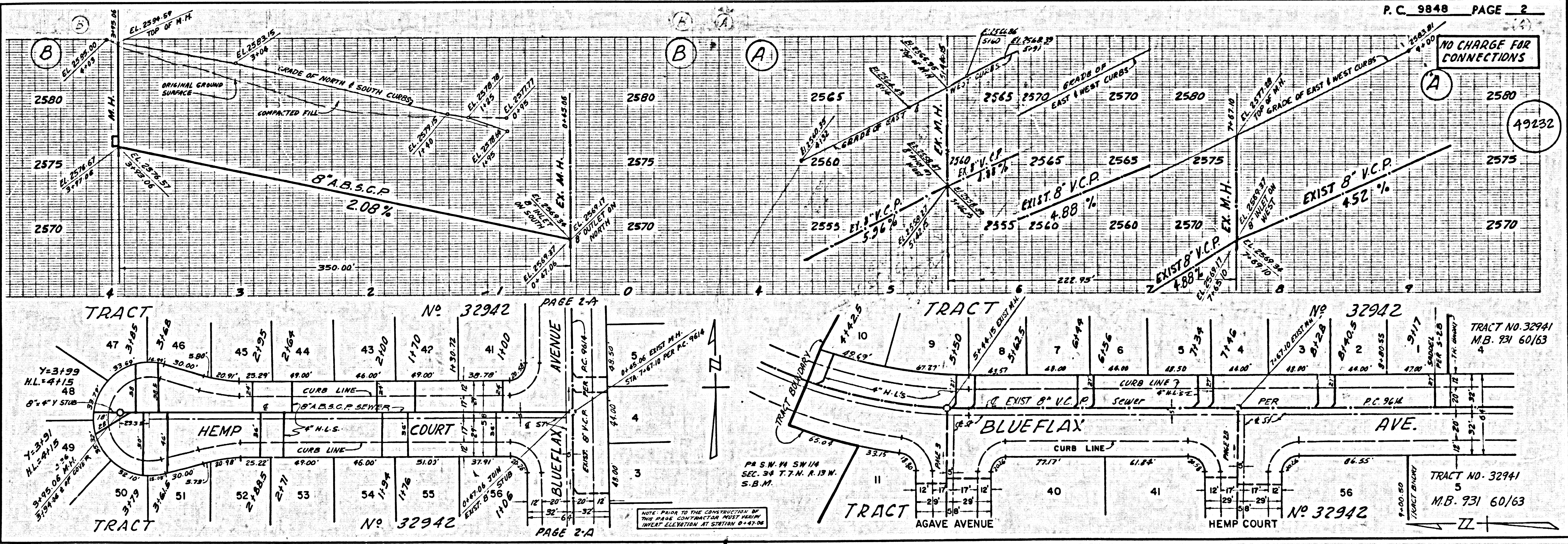
TO BE CONSTRUCTED IN
 TRACT NO. 32942
 PRIVATE CONTRACT NO. 9848

W.S. 71
 2 SHEETS, 4 PAGES
 SCALE: HORIZ. 1"=40' VERT. 1"=4'
 DECEMBER 1978
 PREPARED IN THE OFFICES OF
 SCHORR ENGINEERS
 13609 VICTORY BLVD. VAN NUYS
 BY: *Kevin Schorr*
 REG. C.E. No. 12955

THE FOLLOWING LATEST REVISED STANDARD PLANS ON FILE IN THE OFFICE OF THE COUNTY ENGINEER SHALL APPLY IN THE CONSTRUCTION OF THIS PROJECT:

SEWER	8-1
MINIMUM PUBLIC SAFETY REQUIREMENTS	8-2
ANCE MANHOLE	8-3
STANDARD MANHOLE STEP	8-7
SEWER FOR SEWER PIPE	8-8
CHANGING AND DISCHARGING	8-9
WYE OR THE SUPPORT	8-10
ALLOWABLE TRENCH WIDTHS	8-11
EXCAVATION MANHOLE PLANS AND COVER	8-12
NON-APPROVED PERMITS CONCRETE MANHOLE	8-13
SADDLES FOR HOUSE LATERALS	8-14

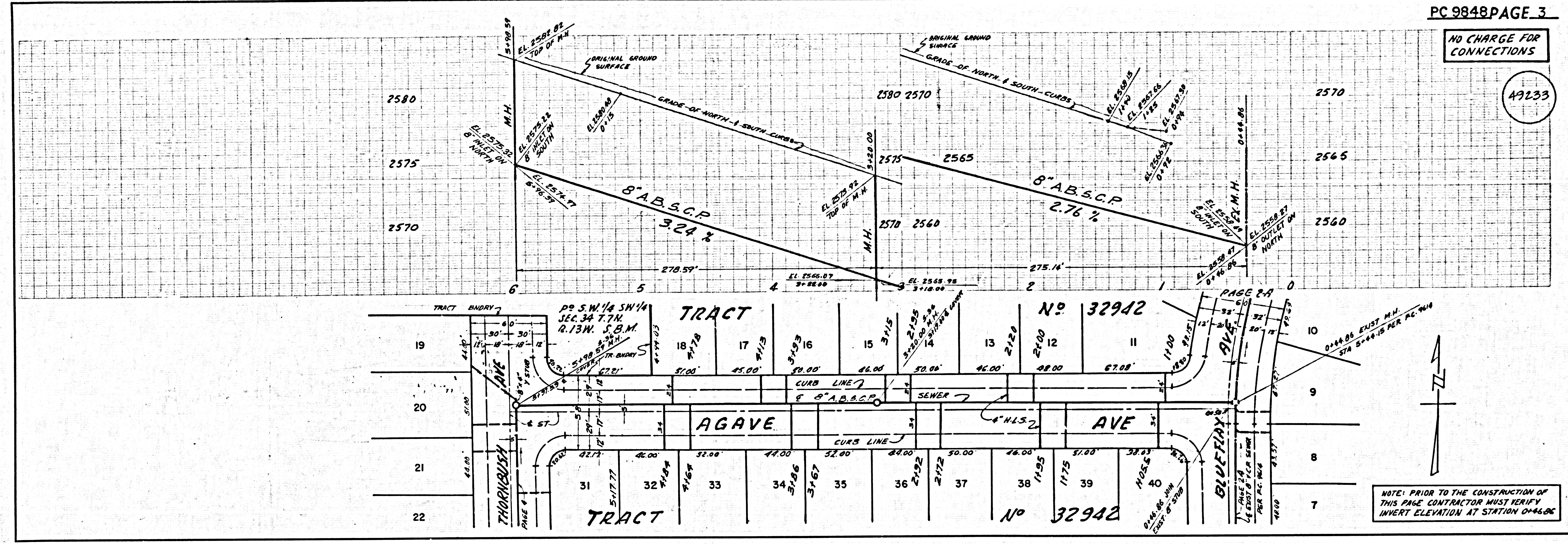
COUNTY OF LOS ANGELES, CALIFORNIA
 STEPHEN J. KOONCE COUNTY ENGINEER WALTER E. GARRISON CHIEF ENGINEER
 CO. SAN DIST. NO. 18
 APPROVED *Carol DeBrock* 11/13/80 APPROVED *Kevin Schorr* 11/13/80
 DATE DATE FOR OFFICE ENGINEER
 CHECKED *Dean E. Johnson* 11/13/80
 DATE
 REG. C.E. NO. 25557
 LANCASTER BDG. DIST. 8



8480 29

NO CHARGE FOR CONNECTIONS

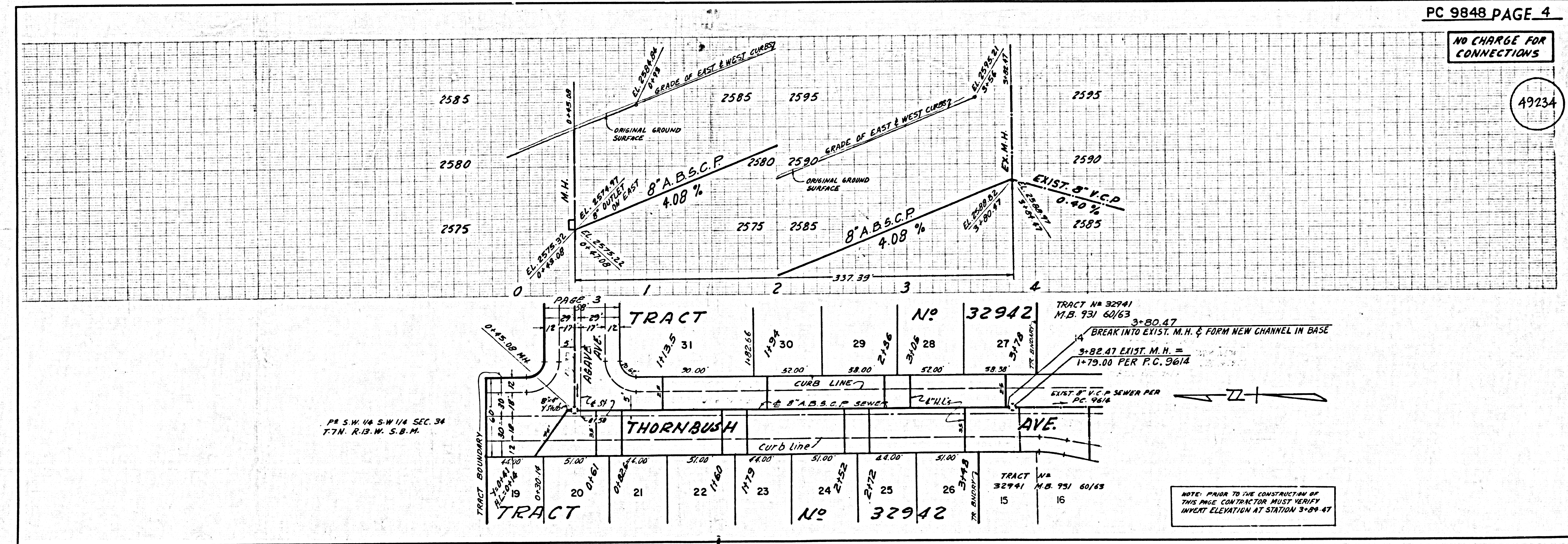
49233



NOTE: PRIOR TO THE CONSTRUCTION OF THIS PAGE CONTRACTOR MUST VERIFY INVERT ELEVATION AT STATION 0+46.06

NO CHARGE FOR CONNECTIONS

49234



NOTE: PRIOR TO THE CONSTRUCTION OF THIS PAGE CONTRACTOR MUST VERIFY INVERT ELEVATION AT STATION 3+99.47

5
8482 39