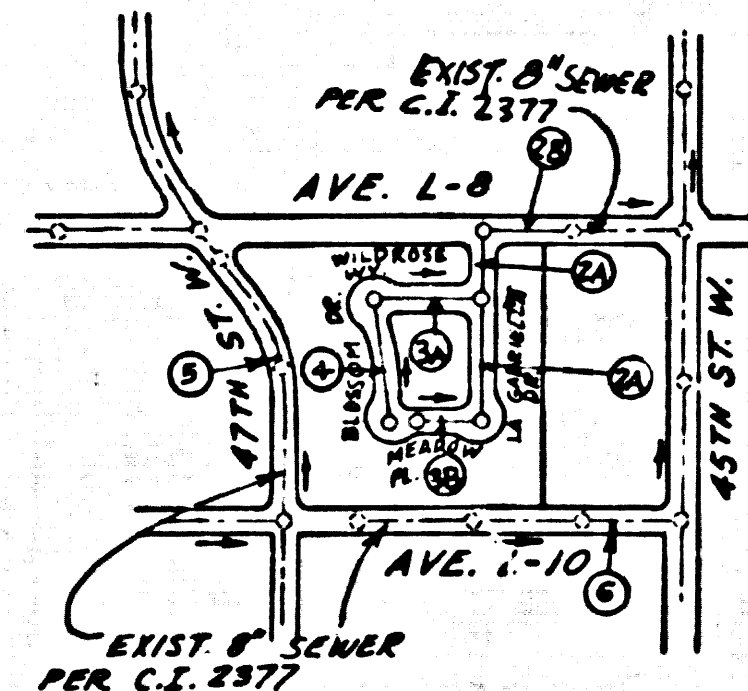


B.M. CL 177 ELEV. 2461.796
 1/4 E COR CONC SLAB
 100 FT W & 66 FT S CL INT
 50TH ST W & AVE L-B
 LANCASTER QUAD. 1972



NOTE:
 NUMBERS IN CIRCLES INDICATE
 PAGE NUMBERS.



INDEX MAP
 Scale 1"=600'
 P.C. 9849
 TR. NO. 36713

NO CONNECTION FOR THE DISPOSAL OF INDUSTRIAL WASTES
 SHALL BE MADE TO SEWERS SHOWN ON THESE DRAWINGS UNTIL
 A PERMIT FOR INDUSTRIAL WASTEWATER DISCHARGE HAS BEEN
 ISSUED BY THE SANITATION DISTRICTS FOR SAID CONNECTION.
 BEFORE BREAKING INTO OR CONSTRUCTION ON A COUNTY
 SANITATION DISTRICT SEWER AND PRIOR TO FINAL
 ACCEPTANCE OF THE PROJECT, SANITATION DISTRICT
 INSPECTOR SHALL BE NOTIFIED BY PHONE - 962-8464, 605-941-5027
 962-8464 SO THAT REQUIRED INSPECTION CAN BE MADE.

GENERAL NOTES:

1. REVISIONS ARE IN RED INK. S.C. & S.E. SEA LEVEL DATUM OF 1929.
2. NO REVISIONS SHALL BE MADE IN THESE PLANS WITHOUT THE APPROVAL OF THE COUNTY ENGINEER.
3. NO REPRESENTATIVE OF THE COUNTY ENGINEER WILL SURVEY OR LAY OUT ANY PORTION OF THE WORK.
4. GRADES TO WHICH THIS IMPROVEMENT IS TO BE CONSTRUCTED ARE SHOWN ON PLANS AND PROFILE GRADE -DIMS FOR TOP OF CURBS, CENTER LINE OF STREETS, OR CENTER LINE OF ALLEYS ARE SHOWN BY CIRCLES ON PROFILES. AT ALL POINTS BETWEEN DESIGNATED POINTS THE GRADE SHALL BE ESTABLISHED SO AS TO CONFORM TO A STRAIGHT LINE DRAWN BETWEEN SAID DESIGNATED POINTS.
5. THE PRIVATE ENGINEER SHALL FURNISH THE COUNTY ENGINEER WITH GRADE SHEETS AND STATIONING FOR ALL HOUSE LATERALS AND "T" OR "Y" BRANCHES AND SHALL PROVIDE PROPER TREAT AT THEIR PROPER LOCATIONS WITH STATIONING PLAINLY MARKED. ALL HOUSE LATERALS SHALL BE CONSTRUCTED IN A STRAIGHT ALIGNMENT AT RIGHT ANGLES FROM THE MAIN LINE SEWER EXCEPT AS SHOWN ON THE PLANS. HOUSE LATERALS FROM CHIMNEYS SHALL NOT HAVE AN ANGLE OF LESS THAN 45° WITH THE MAIN LINE SEWER. ANY CHANGE IN ALIGNMENT SHALL BE REQUESTED BY WRITING BY THE PRIVATE ENGINEER.
6. THE PRIVATE ENGINEER SHALL FURNISH THE HOUSE LATERAL DEPTH AT THE PROPERTY LINE BELOW THE TOP OF CURB ELEVATION FOR EACH HOUSE LATERAL ON THE GRADE SHEET.
7. BEFORE WORK CAN BE STARTED, THE CONTRACTOR MUST OBTAIN A PERMIT TO EXCAVATE IN COUNTY STREETS FROM THE L.A. COUNTY ROAD DEPT., DISTRICT OFFICE NO. 5, AND PAY A FEE TO THE COUNTY ENGINEER, 550 S. VERMONT AVE., LOS ANGELES, CALIF. 90020, TO COVER THE COST OF CONSTRUCTION INSPECTION AND RECORD PLANS.
8. IF WORK IS TO BE DONE IN A STATE HIGHWAY, A PERMIT MUST BE OBTAINED FROM THE STATE OF CALIFORNIA, DIVISION OF HIGHWAYS, 138 SOUTH SPRING STREET, LOS ANGELES, CALIFORNIA.
9. APPROVAL OF THIS PLAN BY THE COUNTY OF LOS ANGELES DOES NOT CONSTITUTE A REPRESENTATION AS TO THE ACCURACY OF THE LOCATION OF OR THE EXISTENCE OR NON-EXISTENCE OF ANY UNDERGROUND UTILITY PIPE, OR STRUCTURE WITHIN THE LIMITS OF THIS PROJECT. THIS NOTE APPLIES TO ALL PAGES.
10. REFER TO SECTION 7-14.1 OF THE STANDARD SPECIFICATIONS, REGARDING SAFETY CONES.
11. PRIOR TO THE ISSUANCE OF THE REQUIRED SEWER CONSTRUCTION PERMIT, THE CONTRACTOR SHALL OBTAIN AND FILE WITH THE COUNTY ENGINEER COPIES OF A PERMIT TO EXCAVATE IN COUNTY STREETS FROM THE LOS ANGELES COUNTY ROAD DEPARTMENT, A PERMIT FOR EXCAVATIONS AND TRENCHES FROM THE STATE OF CALIFORNIA, DIVISION OF INDUSTRIAL SAFETY AND A CERTIFICATE OF WORKMAN'S COMPENSATION INSURANCE WITH THE DEPARTMENT OF COUNTY ENGINEER, 550 SOUTH VERMONT AVE., LOS ANGELES, CA. 90020, ROOM 406, NAMED AS THE CERTIFICATE HOLDER, TO BE NOTIFIED 30 DAYS PRIOR TO CANCELLATION OF THE POLICY.

CONSTRUCTION NOTES:

1. WORK SHALL BE CONSTRUCTED ACCORDING TO THE STANDARD SPECIFICATIONS FOR PUBLIC WORKS CONSTRUCTION 1979 EDITION WITH 1980 SUPPLEMENTS AND COUNTY ENGINEER SPECIAL PROVISIONS FOR THE CONSTRUCTION OF SANITARY SEWERS DATED SEPT. 21, 1976 AND SHALL BE PROSECUTED ONLY IN THE PRESENCE OF THE COUNTY ENGINEER.
2. THE CONTRACTOR SHALL NOTIFY THE DIVISION OF TELEPHONE (DIT) 738-8756, AT LEAST TWENTY-FOUR HOURS BEFORE STARTING ANY WORK UNDER THIS CONTRACT.
3. HOUSE LATERALS TO BE CONSTRUCTED WITH BRICKS AT PROPERTY LINE & FEET BELOW CURB GRADE EXCEPT AS NOTED.
4. WYE OR TEE BRANCHES MAY BE USED FOR CONNECTIONS TO MAINLINE SEWERS EXCEPT AS NOTED.
5. ALL STRUCTURES SHALL BE BUILT BRICK MANHOLES PER 5-3 OR PRECAST CONCRETE MANHOLES PER 5-24, EXCEPT AS NOTED.
6. PROFILE STAGES ON THE PROPERTY LINE OR PROPERTY LINE PRODUCE AT RIGHT ANGLES TO THE SEWER LINE AT THE CENTER LINE OF EACH MANHOLE.
7. MANHOLE TOPS IN UNIMPROVED RIGHTS OF WAY TO BE SIX INCHES ABOVE FINISHED GRADE.
8. VITRIFIED CLAY PIPE JOINTS SHALL BE TYPE "B", OR "D" PER STANDARD SPECIFICATIONS SECTION 200-2.
9. IF A POWER POLE IS WITHIN THREE FEET OF THE SEWER, THE SEWER SHALL BE ENCASED, PER 5-25, CASE II, TWO FEET ON EACH SIDE FROM THE POINT OF INTERFERENCE.
10. IF DURING THE COURSE OF CONSTRUCTION IT IS DETERMINED THAT THERE IS LESS THAN FOUR FEET OF COVER OVER THE TOP OF A MAIN LINE OR HOUSE LATERAL V.C.P. SEWER WHICH IS NOT INDICATED ON THE PLANS, THE PIPE SHALL BE ENCASED PER 5-25, CASE II UNLESS OTHERWISE ADVISED BY THE COUNTY ENGINEER.
11. ALL JOINTS BETWEEN CAST IRON PIPE AND VITRIFIED CLAY PIPE SHALL BE MADE WITH A RUBBER SLEEVE JOINT, TYPE "C" OR "D", FIFTEEN MINIMUM IF NECESSARY PER STANDARD SPECIFICATIONS, SECTION 200-2.
12. SEWERS TO BE TESTED FOR LEAKAGE PER SECTION 200-4 OF THE STANDARD SPECIFICATIONS AND SPECIAL PROVISIONS.
13. INSURE ALL TRENCHES WITHIN PAVED AREAS TO MEET L.A. COUNTY ROAD DEPT. OR CALIFORNIA STATE HIGHWAY REQUIREMENTS IN ACCORDANCE WITH PERMITS.
14. FULL COMPLIANCE WITH SECTION 200-1.02 OF THE SPECIAL PROVISIONS WILL BE REQUIRED FOR RACEWAYS IN STREETS. CERTIFICATION OF SUCCESSFUL COMPLETION AND SAID EQUIVALENTS BY A QUALIFIED, REGISTERED TESTING LABORATORY SHALL BE PROVIDED BY THE PERMITTEE PRIOR TO THE ISSUANCE OF A CERTIFICATE OF PARTIAL ACCEPTANCE.

PROFILE, ALIGNMENT AND GRADE OF
SANITARY SEWERS PAGE 1
 TO BE CONSTRUCTED IN
 TRACT NO. 36713

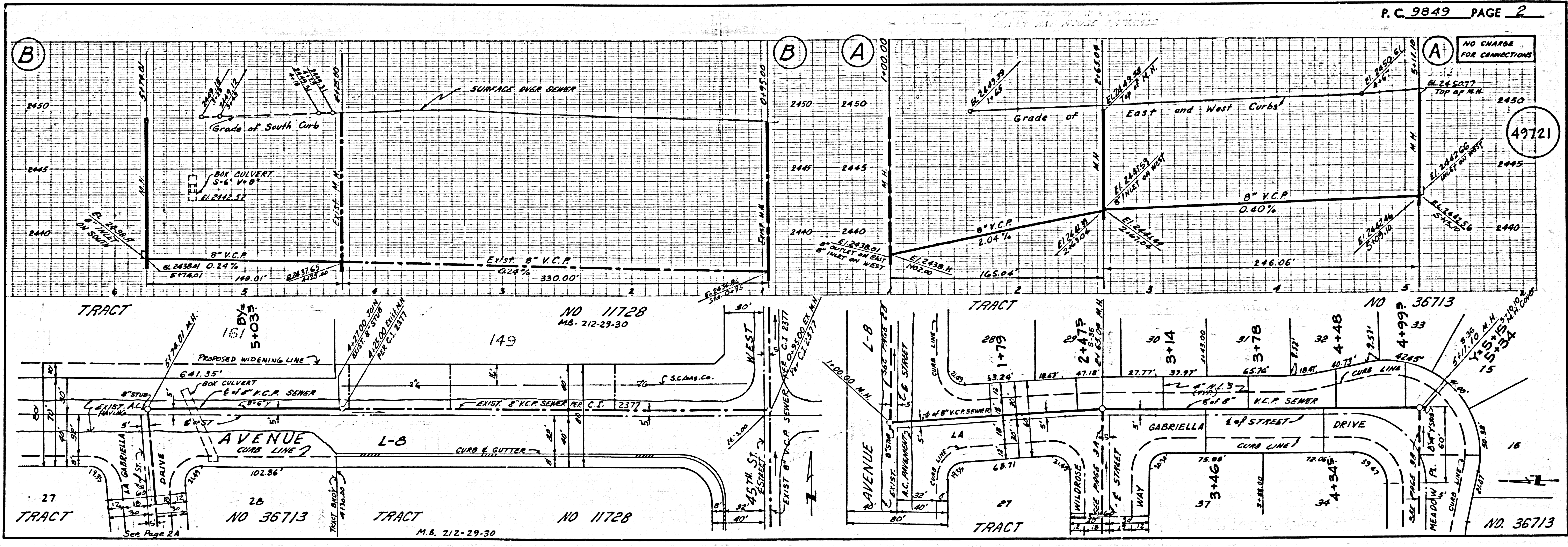
PRIVATE CONTRACT NO. 9849

W.S. 71
 3 SHEETS, 6 PAGES (49720)
 SCALE: HORIZ. 1"=40' JULY, 1980
 PREPARED IN THE OFFICES OF
ANTELOPE VALLEY ENGINEERING, INC.
 129 WEST PONDERA ST., LANCASTER, CA. 93534
 BY: *Clayton J. Lee* REG. C. E. No. C19289
 TEL. (805) 948-0805

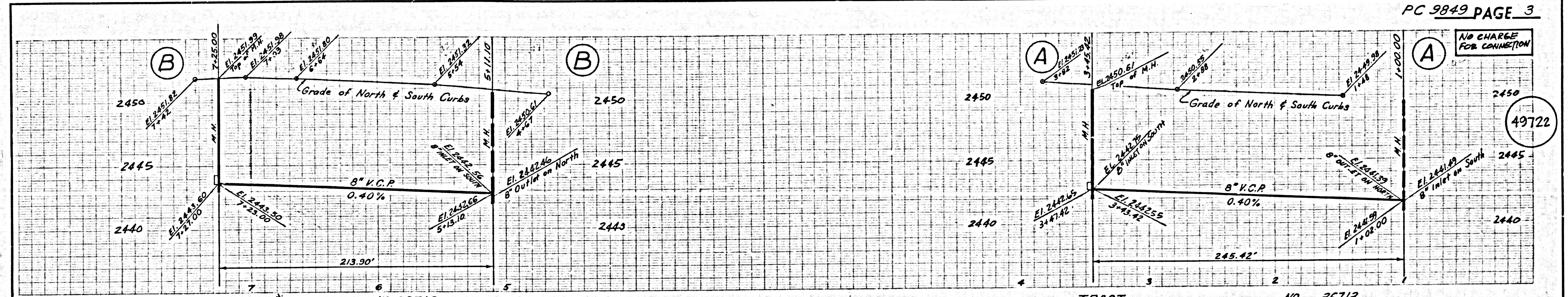
THE FOLLOWING LATEST REVISED STANDARD PLANS ON FILE IN THE OFFICE OF THE COUNTY ENGINEER SHALL APPLY IN THE CONSTRUCTION OF THIS PROJECT.

LEAKAGE	5-1
MINIMUM PUBLIC SAFETY REQUIREMENTS	5-2
BRICK MANHOLES	5-3
STANDARD MANHOLE STOP	5-7
BRICKS FOR SEWER PIPE	5-8
CHANGING AND ENCASING	5-17
WYE OR TEE SUPPORT	5-20
ALLOWABLE TRENCH WIDTHS	5-20
LOCKING MANHOLES PLANS AND COVERS	5-26
NON-APPROVED PRECAST CONCRETE MANHOLE	5-26
SADDLES FOR HOUSE LATERALS	5-28

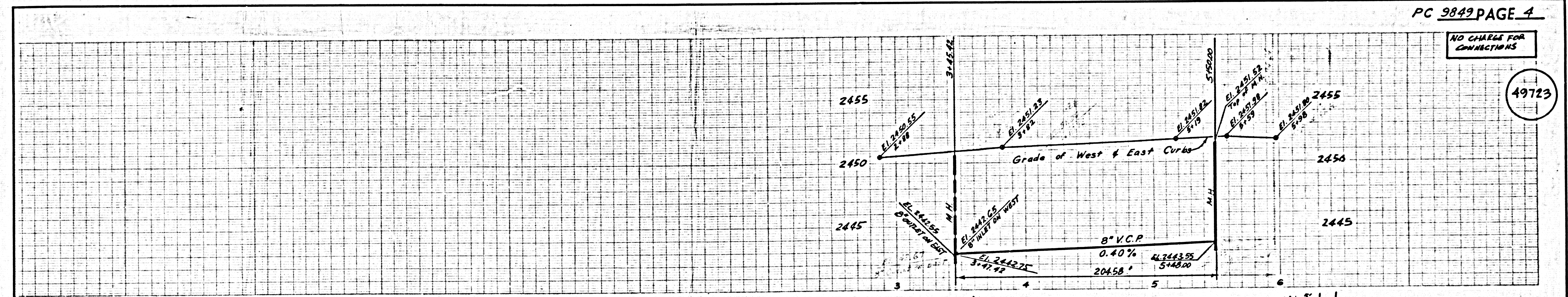
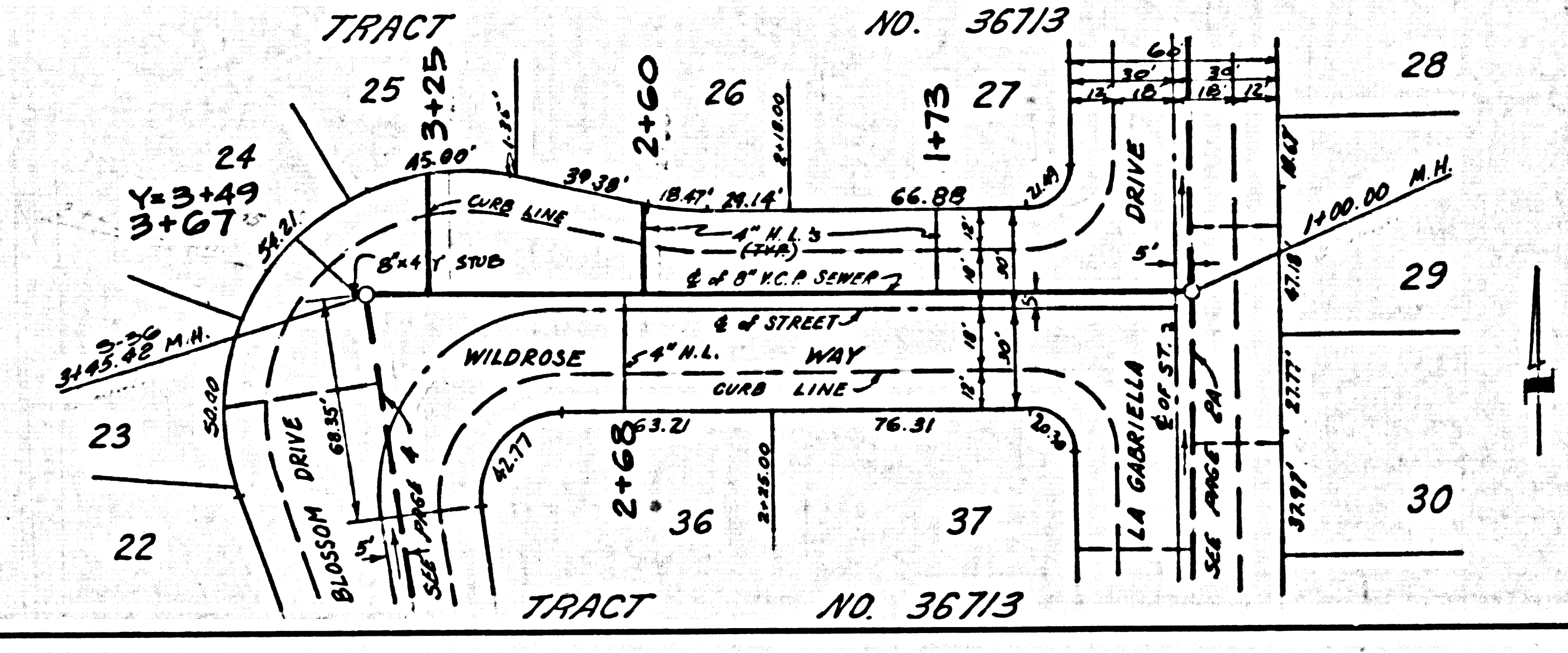
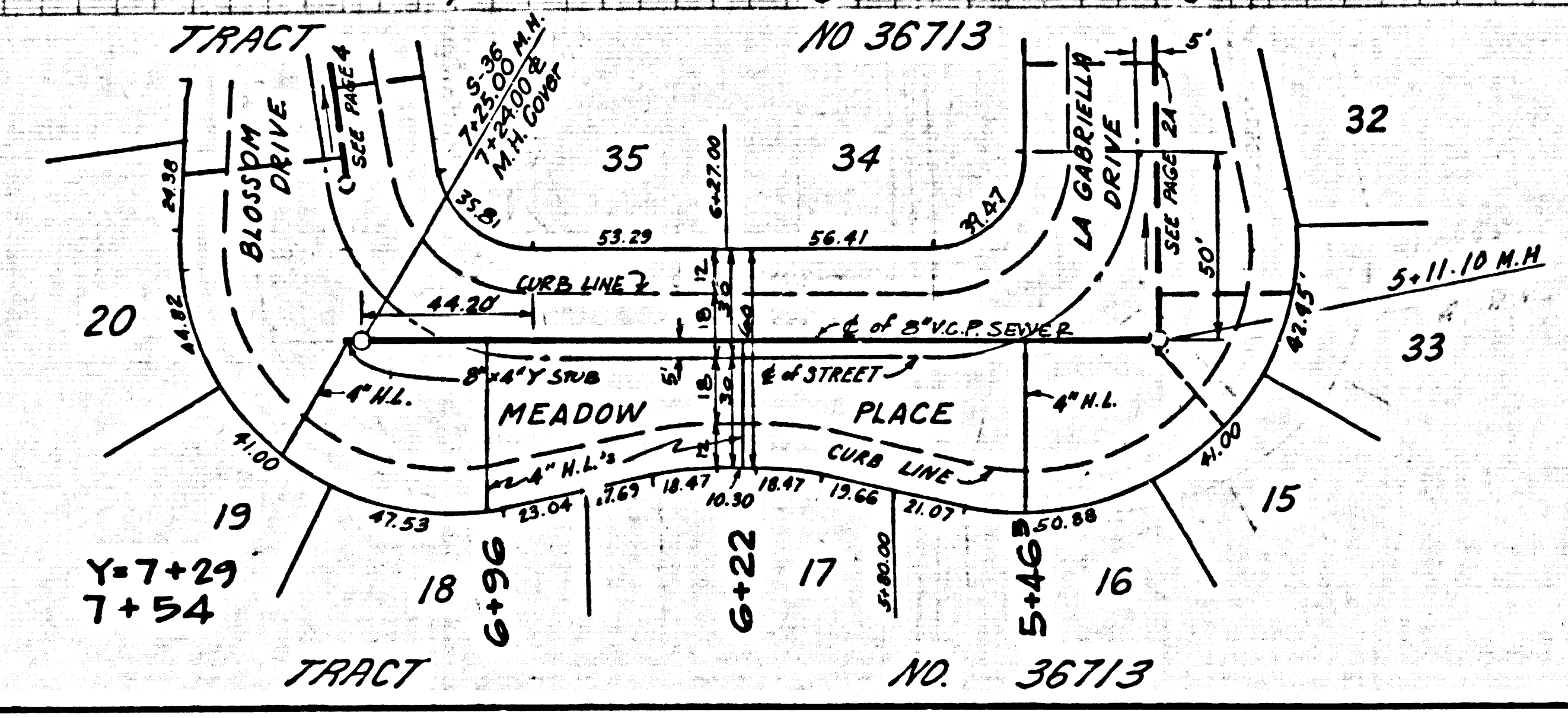
COUNTY OF LOS ANGELES, CALIFORNIA
 STEPHEN J. ROSS, COUNTY ENGINEER WALTER R. GARRISON, CHIEF ENGINEER
 CO. SAN DIST. NO. 16
 APPROVED *Martin L. Murphy* 11/23/81 APPROVED *Walter R. Garrison* 11/30/81
 11/23/81 11/30/81
 CHECKED *Robert David Smith* 11/23/81
 11/23/81
 SEE SAN DISTRICTS FOR SPECIAL CONNECTION CHANGES
 LANCASTER BLDG. DIST. 80



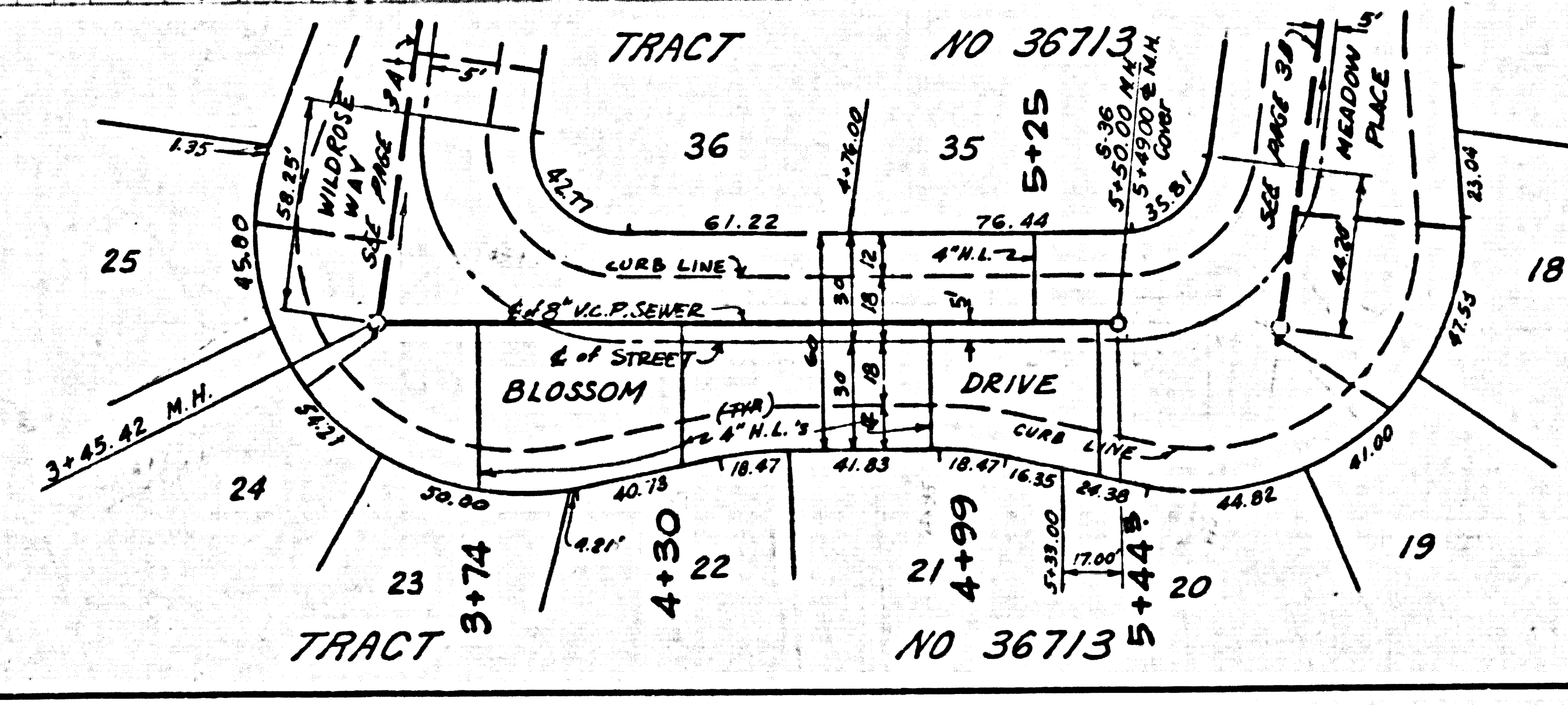
1
 2882 29
 12328 ON T34927



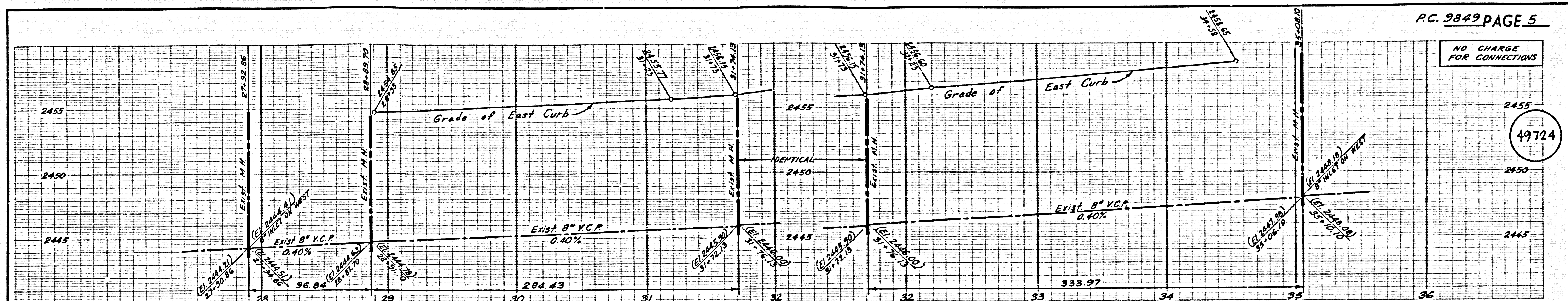
49722



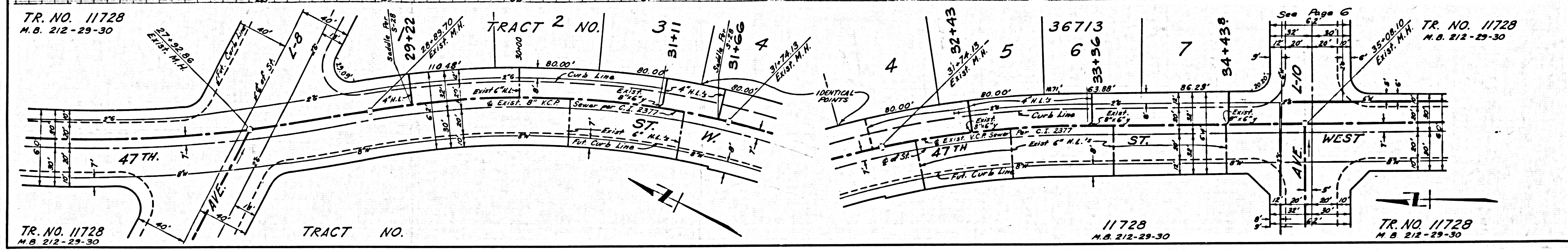
49723



488E 09
E18E ON T049T



49724



49725