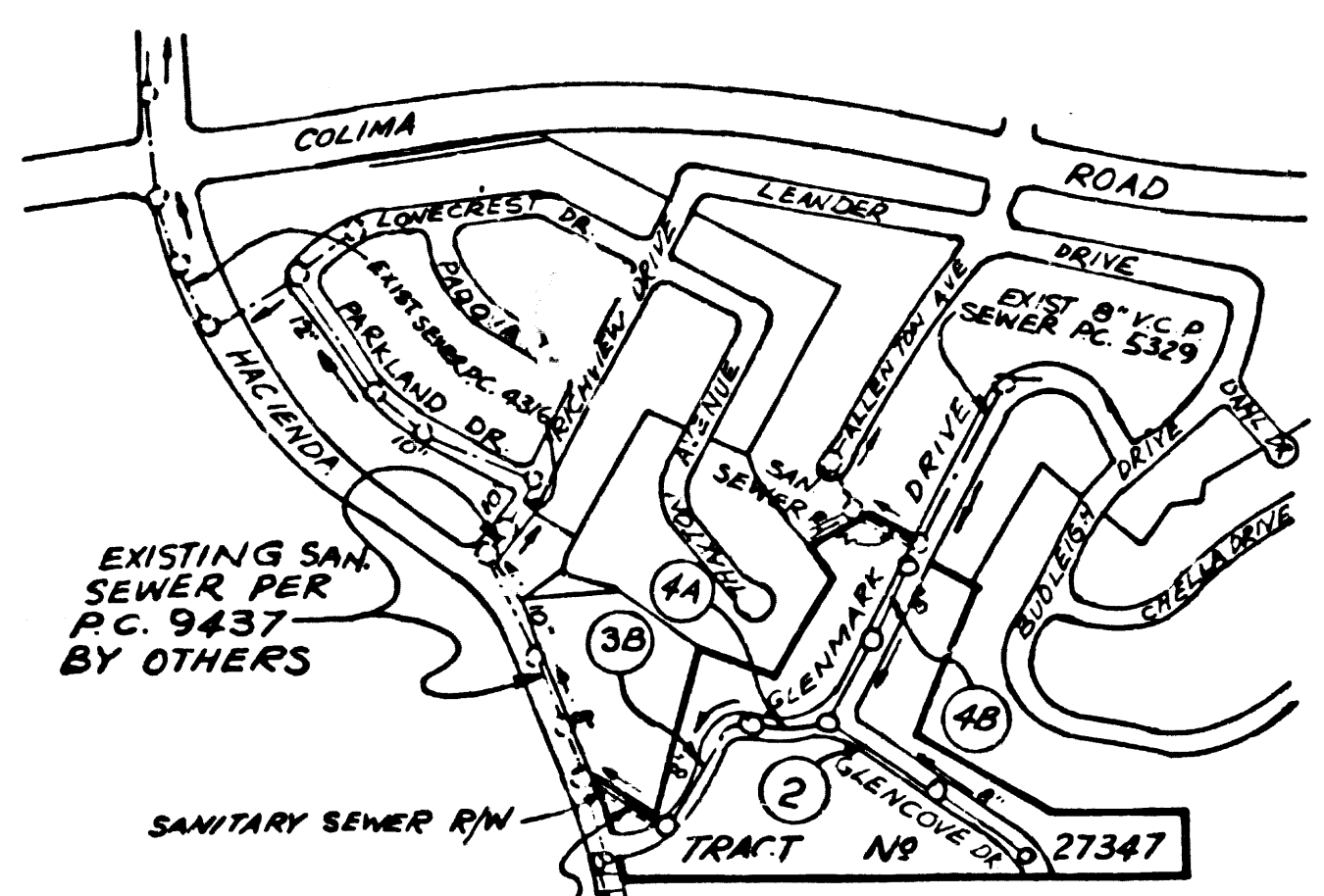


B.M. CG 3713 ELEV. 600.741

RDBM TAG IN WCB 40 FT S'LY OF HACIENDA BOULEVARD ON E PROD. RICHVIEW DRIVE BASELINE QUAD. 1975



INDEX MAP P.C. 9853 TRACT NO. 27347 Scale: 1" = 600'

NOTE: NUMBERS IN CIRCLES INDICATE PAGE NUMBERS

CONSTRUCTION NOTES: (CONT'D.)

- 16. Full compliance with Part IV of the special provisions is required for the installation of A.B.S. composite pipe.
17. Manhole water stop gaskets and clamps are required for the connection of A.B.S. composite pipe to manhole structures.
18. A.B.S. solid wall pipe must be used for wye and house lateral connections to A.B.S. composite mainline sewer pipe.
19. A.B.S. composite pipe shall be bedded in conformance with the table in Section B-3, 1 of Part IV of the special provisions.
20. Pipe deflection fittings are required for radius of curvature less than 280' when using 8" A.B.S.C.P.

Table with columns: REVISIONS, ITEM, REVISED, DATE, REVISED BY, APPROVED BY, DATE. Includes a revision for storm drain profile and pipe size change.

ISSUE NO PERMITS UNTIL P.C. 9437 IS ACCEPTED

NO CONNECTION FOR THE DISPOSAL OF INDUSTRIAL WASTES SHALL BE MADE TO SEWERS SHOWN ON THESE DRAWINGS UNTIL A PERMIT FOR INDUSTRIAL WASTEWATER DISCHARGE HAS BEEN ISSUED BY THE SANITATION DISTRICTS FOR SAID CONNECTION.

GENERAL NOTES: DOUBLE SCALE

- 1. ELEVATIONS ARE IN FEET ABOVE U.S.C. & G.S. SEA LEVEL, DATUM OF 1929.
2. NO REVISIONS SHALL BE MADE IN THESE PLANS WITHOUT THE APPROVAL OF THE COUNTY ENGINEER.
3. NO REPRESENTATIVE OF THE COUNTY ENGINEER WILL SIGN OR SEAL ANY PORTION OF THESE PLANS.
4. GRADES TO WHICH THIS IMPROVEMENT IS TO BE CONSTRUCTED ARE SHOWN ON PLANS AND PROFILES. GRADE POINTS FOR TOP OF CURB, CENTER LINE OF STREETS, OR CENTER LINE OF ALLEYS ARE SHOWN ON PROFILES. AT ALL POINTS BETWEEN DESIGNATED POINTS THE GRADE SHALL BE ESTABLISHED SO AS TO CONFORM TO A STRAIGHT LINE DRAWN BETWEEN SAID DESIGNATED POINTS.
5. THE PRIVATE ENGINEER SHALL FURNISH THE COUNTY ENGINEER WITH GRADE SHEETS AND STATIONING FOR ALL HOUSE LATERALS AND 'T' OR 'Y' BRANCHES AND SHALL PROVIDE STAKES FOR THEM AT THEIR PROPER LOCATIONS WITH STATIONING PLAINLY MARKED. ALL HOUSE LATERALS SHALL BE CONSTRUCTED IN A STRAIGHT ALIGNMENT AT RIGHT ANGLES FROM THE MAIN LINE SEWER EXCEPT AS SHOWN ON THE PLANS. HOUSE LATERALS FROM CHIMNEYS SHALL NOT HAVE AN ANGLE OF LESS THAN 45° WITH THE MAIN LINE SEWER. ANY CHANGE IN ALIGNMENT SHALL BE REQUESTED IN WRITING BY THE PRIVATE ENGINEER.
6. THE PRIVATE ENGINEER SHALL FURNISH THE HOUSE LATERAL DITCH AT THE PROPERTY LINE BELOW THE TOP OF CURB ELEVATION FOR EACH HOUSE LATERAL ON THE GRADE SHEET.
7. BEFORE WORK CAN BE STARTED, THE CONTRACTOR MUST OBTAIN A PERMIT TO EXCAVATE IN COUNTY STREETS FROM THE L.A. COUNTY ROAD DEPT., DISTRICT OFFICE NO. 1, AND PAY A FEE TO THE COUNTY ENGINEER, 201 E. BONVITA AVE., SAN DIMAS REGIONAL OFFICE, TO COVER THE COST OF CONSTRUCTION INSPECTION AND RECORD PLANS.
8. IF WORK IS TO BE DONE IN A STATE HIGHWAY, A PERMIT MUST BE OBTAINED FROM THE STATE OF CALIFORNIA, DIVISION OF HIGHWAYS, 128 SOUTH SPRING STREET, LOS ANGELES, CALIFORNIA.
9. APPROVAL OF THIS PLAN BY THE COUNTY OF LOS ANGELES DOES NOT CONSTITUTE A REPRESENTATION AS TO THE ACCURACY OF THE LOCATION OF OR THE EXISTENCE OR NON-EXISTENCE OF ANY UNDERGROUND UTILITY PIPE, OR STRUCTURE WITHIN THE LIMITS OF THIS PROJECT. THIS NOTE APPLIES TO ALL PAGES.
10. REFER TO SECTION 7.18.41 OF THE STANDARD SPECIFICATIONS, REGARDING SAFETY ORDERS.
11. PRIOR TO ISSUANCE OF THE REQUIRED SEWER CONSTRUCTION PERMIT BY THE COUNTY ENGINEER, THE CONTRACTOR SHALL OBTAIN A PERMIT TO EXCAVATE FROM THE STATE OF CALIFORNIA, DEPARTMENT OF INDUSTRIAL RELATIONS, DIVISION OF INDUSTRIAL SAFETY, AND SHALL FILE A CERTIFICATE OF WORKERS COMPENSATION INSURANCE WITH THE COUNTY ENGINEER. WHEN AS THE CERTIFICATE HOLDER TO BE NOTIFIED 30 DAYS PRIOR TO CANCELLATION OF POLICY.

CONSTRUCTION NOTES:

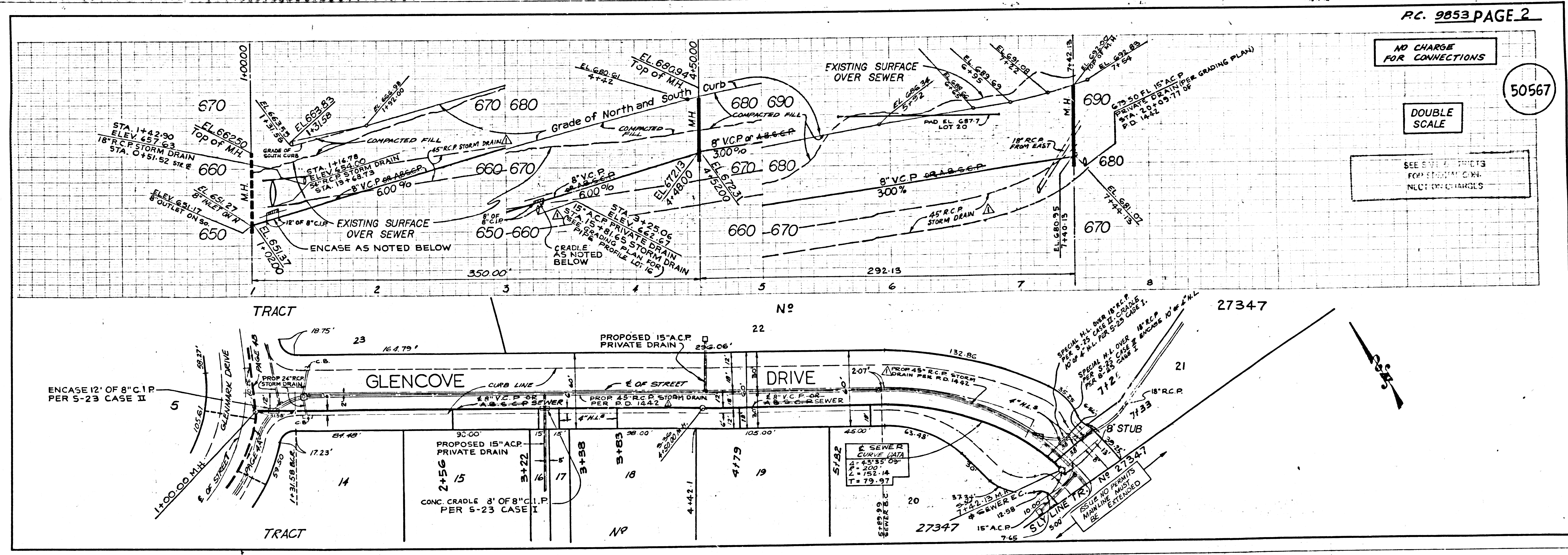
- 1. WORK SHALL BE CONSTRUCTED ACCORDING TO THE STANDARD SPECIFICATIONS FOR PUBLIC WORKS CONSTRUCTION (1978 EDITION WITH 1980 SUPPLEMENT) AND COUNTY ENGINEER SPECIAL PROVISIONS FOR THE CONSTRUCTION OF SANITARY SEWERS DATED SEPTEMBER 21, 1978 AND SHALL BE PROSECUTED ONLY IN THE PRESENCE OF THE COUNTY ENGINEER.
2. THE CONTRACTOR SHALL NOTIFY THE SANITATION DISTRICTS BY TELEPHONE, (213) 758-2186, AT LEAST TWENTY-FOUR HOURS BEFORE STARTING ANY WORK UNDER THIS CONTRACT.
3. HOUSE LATERALS TO BE CONSTRUCTED WITH INVERTS AT PROPERTY LINE 8 FEET BELOW CURB GRADE EXCEPT AS NOTED.
4. WYE OR THE BRANCHES MAY BE USED FOR CONNECTIONS TO MAINLINE SEWERS EXCEPT AS NOTED.
5. ALL BRANCHES MUST BE USED FOR CONNECTIONS TO MAINLINE SEWERS EXCEPT AS NOTED.
6. ALL STRUCTURES SHALL BE OTHER THAN MANHOLES PER SECTION 300-1.2.
7. PROVIDE STAKES ON THE PROPERTY LINE OR PROPERTY LINES PRODUCED AT RIGHT ANGLES TO THE SEWER LINE AT THE CENTER LINE OF EACH MANHOLE.
8. MANHOLES TOP IN UNIMPROVED RIGHTS OF WAY TO BE 8 1/2 INCHES ABOVE FINISHED GRADE.
9. WETTED CLAY PIPE JOINTS SHALL BE TYPE 'D', OR 'C' PER STANDARD SPECIFICATIONS SECTION 300-3.
10. IF A POWER POLE IS WITHIN THREE FEET OF THE SEWER, THE SEWER SHALL BE ENCASED, PER S-23, CASE II, TWO FEET ON EACH SIDE FROM THE POINT OF INTERFERENCE.
11. IF DURING THE COURSE OF CONSTRUCTION IT IS DETERMINED THAT THERE IS LESS THAN FOUR FEET OF COVER OVER THE TOP OF A MAIN LINE OR HOUSE LATERAL V.C.P. SEWER WHICH IS NOT INDICATED ON THE PLANS, THE PIPE SHALL BE ENCASED PER S-23, CASE II UNLESS OTHERWISE APPROVED BY THE COUNTY ENGINEER.
12. ALL JOINTS BETWEEN CAST IRON PIPE AND WETTED CLAY PIPE SHALL BE MADE WITH A RUBBER SLEEVE JOINT, TYPE 'C' OR 'D', WITH RUBBER GASKETS. ALL JOINTS SHALL BE MADE WITH APPROVED FITTINGS.
13. ENCASE TO BE TESTED FOR LEAKAGE PER SECTION 300-1.2 OF THE STANDARD SPECIFICATIONS AND SPECIAL PROVISIONS.
14. RESURFACE ALL TRENCHES WITHIN PAVED AREAS TO MEET L.A. COUNTY ROAD DEPT. OR CALIFORNIA STATE HIGHWAY REQUIREMENTS IN ACCORDANCE WITH PERMITS.
15. FULL COMPLIANCE WITH SECTION 304-1.8.500 OF THE SPECIAL PROVISIONS WILL BE REQUIRED FOR BACKFILL IN STREETS. CERTIFICATION OF BACKFILL COMPACTION AND SAND EQUIVALENTS BY A QUALIFIED, REGISTERED TESTING LABORATORY SHALL BE PROVIDED BY THE CONTRACTOR PRIOR TO THE ISSUANCE OF A CERTIFICATE OF PARTIAL ACCEPTANCE.
16. SPECIAL SPECIAL IN REGRADED AREAS:
(a) BACKFILL THROUGH & REPLACE OTIS EARTH REMOVED SO AS TO ACHIEVE THE ORIGINAL OR FINISHED GRADES AND SLOPES EXISTING ON THE REGRADING PLAN APPROVED FOR THIS TRACT BY THE BUILDING & SAFETY DIVISION.
(b) ALL BACKFILL AND BARTH REPLACED SHALL BE COMPACTED TO A MINIMUM OF 90% OF MAXIMUM DENSITY PER ASTM STANDARD METHOD OF TESTING D 1556-57T. AS REQUIRED, AN OBTAINABLE CERTIFICATION OF SUCH COMPACTION SHALL BE SUBMITTED TO THE ENVIRONMENTAL DEVELOPMENT DIVISION.

PROFILE, ALIGNMENT AND GRADE OF SANITARY SEWERS PAGE 1 TO BE CONSTRUCTED IN TRACT NO. 27347 PRIVATE CONTRACT NO. 9853

W.S. 38-A, 4, 5 2 SHEETS, 4 PAGES 50566 JUNE, 1980 PREPARED IN THE OFFICES OF TECHNOLOGICAL ENGINEERING CORP. 4821 DURFEE AVE. PICO RIVERA, CA. 90660 REG. C. E. No. 10410 PHONE: 699-1043 (213)

LEGEND table listing items such as MINIMUM PUBLIC SAFETY REQUIREMENTS, BRICK MANHOLES, STANDARD MANHOLE STEP, BEDDING FOR SEWER PIPE, etc.

COUNTY OF LOS ANGELES, CALIFORNIA STEPHEN J. KOONCE, COUNTY ENGINEER WALTER E. GARRISON, CHIEF ENGINEER APPROVED: Ralph D. Dillard 4/2/81 SAN DIMAS REGIONAL ENGINEER (DATE) OFFICE ENGINEER CHECKED: 16883 (DATE) M.D. C.E. NO. 16883 LA PUENTE BLDG. DIST. 2-00



P.C. 9853 PAGE 2

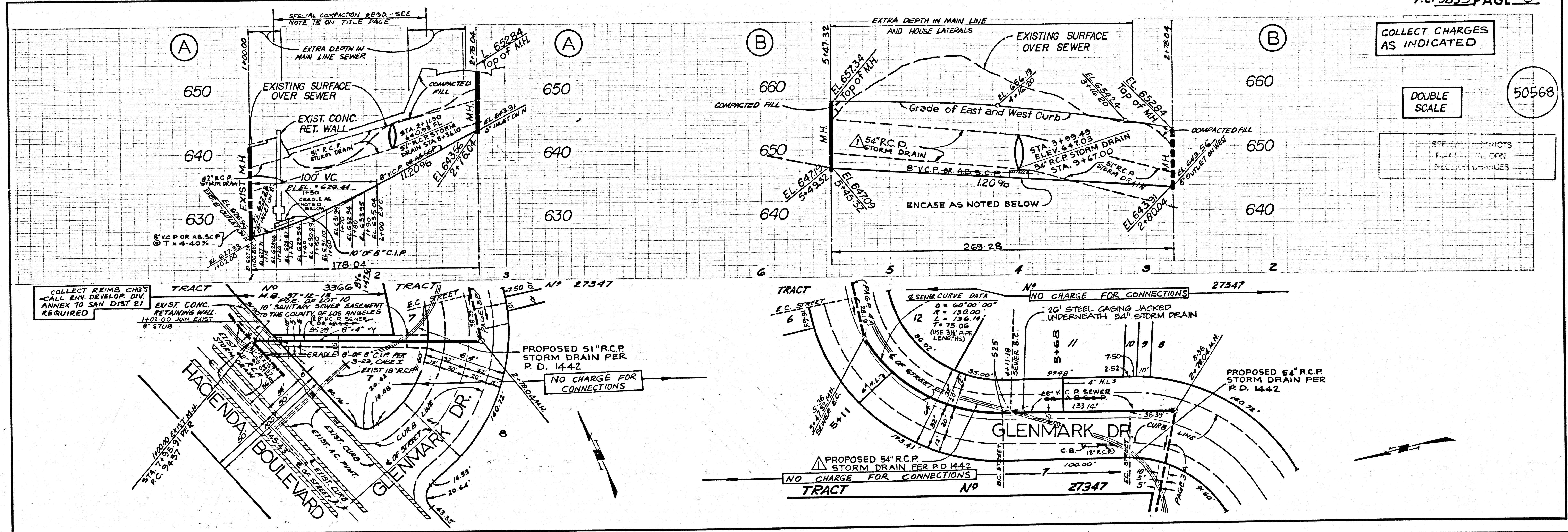
NO CHARGE FOR CONNECTIONS

DOUBLE SCALE

SEE SEWER PROFILES FOR STATIONING CORRELATIONS

50567

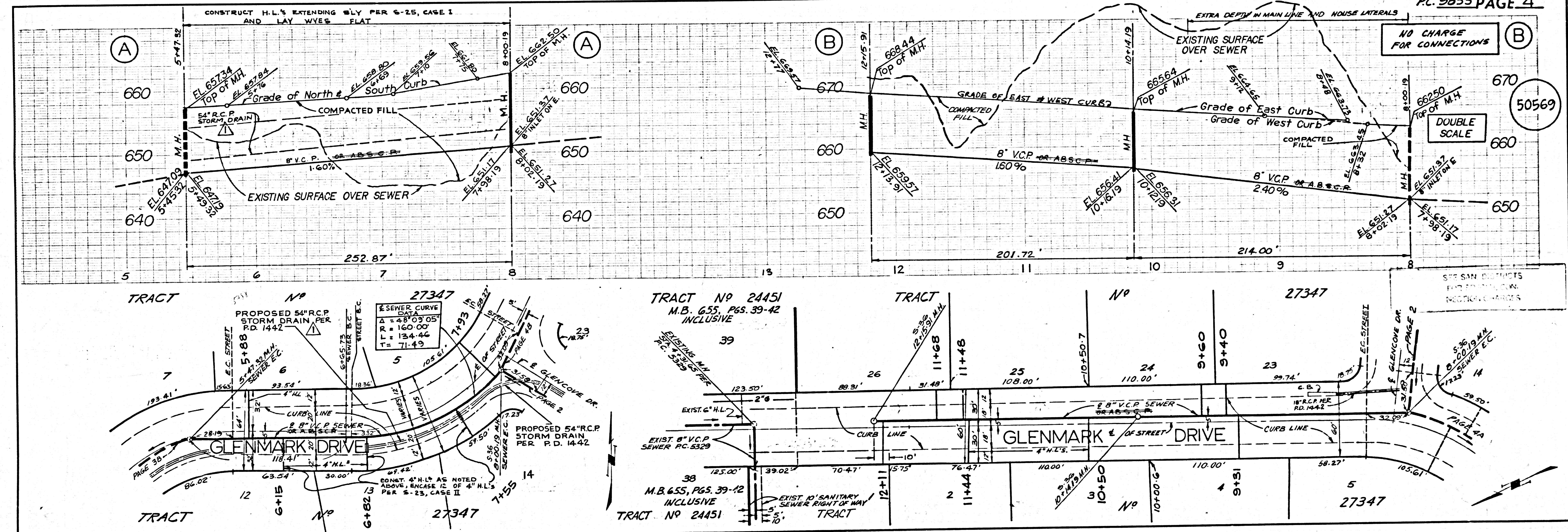
14875 0W 10451



COLLECT CHARGES AS INDICATED

DOUBLE SCALE

50568



NO CHARGE FOR CONNECTIONS

DOUBLE SCALE

50569