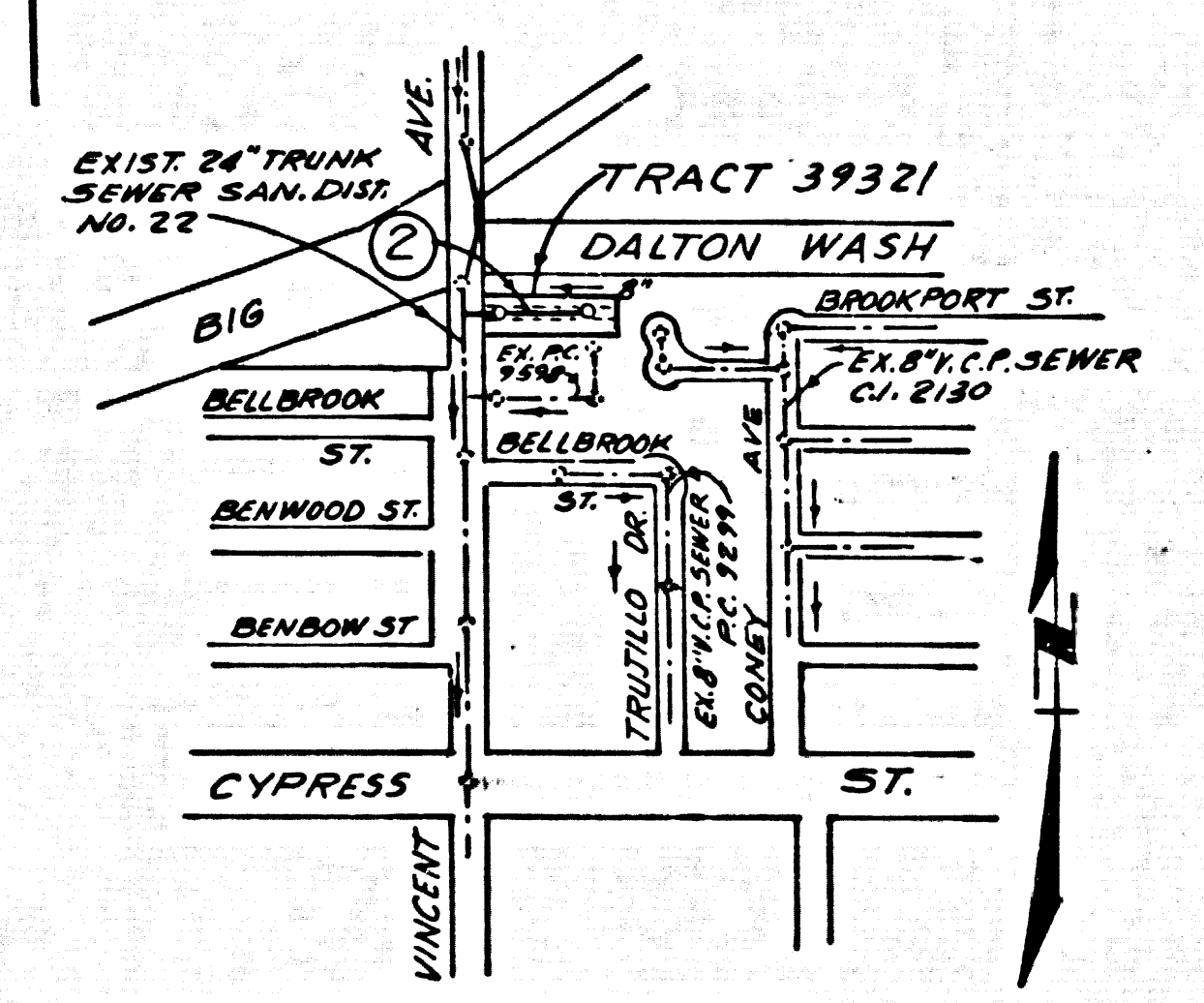


B.M. C.G. 2750 ELEV. 448.969
 PK. IN E. CB 1 FT 5 IN. @ SE COR. CYPRESS ST. & VINCENT AVE.
 G.A.P.T. 5' 4.30 FT. E. C.G. INT.
 COVINA QUAD. 19.75



INDEX MAP
 TRACT NO. 39321
 P.C. 2855
 SCALE 1"=600'

NO CONNECTION FOR THE REMOVAL OF INDUSTRIAL WASTES SHALL BE MADE TO SEWER SHOWS OF THESE DRAWINGS UNTIL A PERMIT FOR INDUSTRIAL WASTEWATER DISCHARGE HAS BEEN ISSUED BY THE SANITATION DISTRICTS FOR SAID CONNECTION.

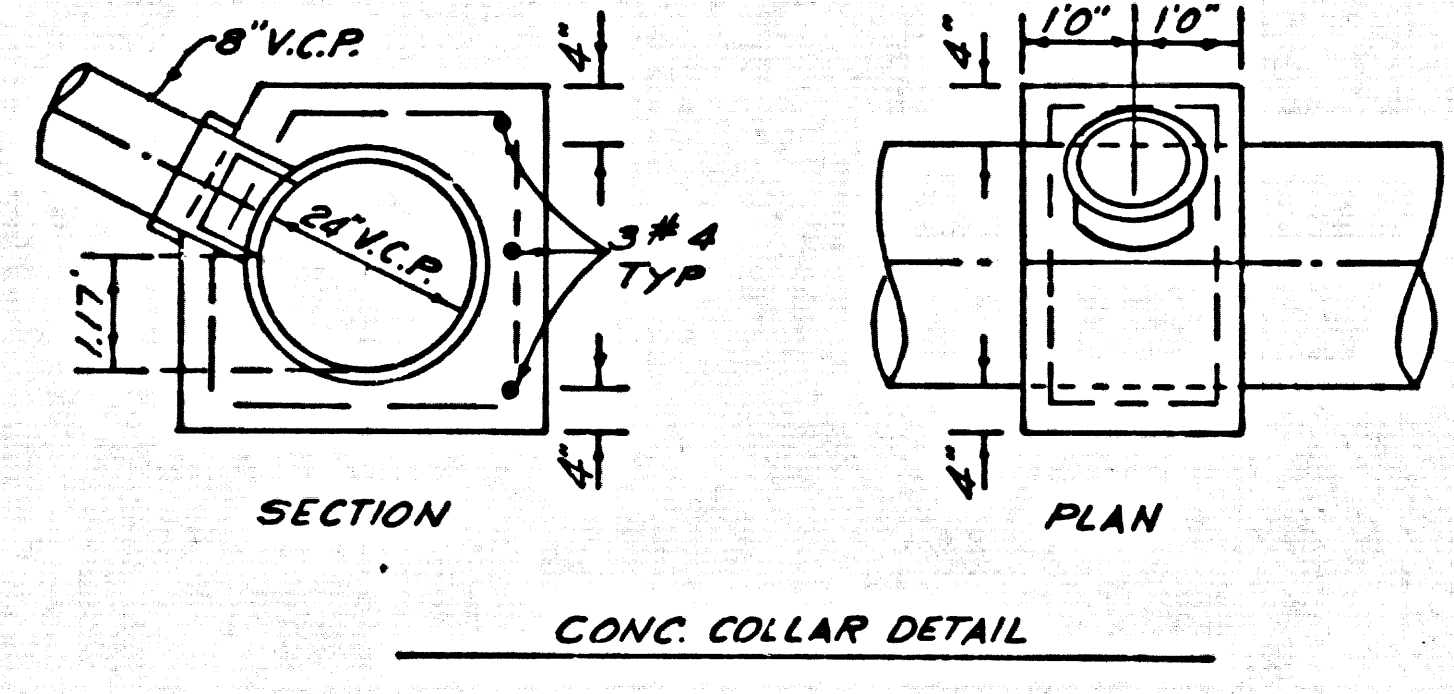
BEFORE BREAKING UP OR CONSTRUCTION ON A COUNTY SANITATION DISTRICT SEWER AND PRIOR TO FINAL ACCEPTANCE OF THE PROJECT, SANITATION DISTRICT INSPECTOR SHALL BE NOTIFIED BY PHONE SO THAT REQUIRED INSPECTION CAN BE MADE.

PRIVATE ENGINEERS NOTICE TO CONTRACTORS

The existence and location of any underground utility pipes or structures shown on these plans are obtained by search of the available records. To the best of our knowledge there are no existing utilities shown on these plans. The contractor is required to take due diligence measures to protect the utility lines shown and any other lines not of record or not shown on these plans.

John J. ...
 Registered Engineer R.C.E. 12233

- CONSTRUCTION NOTES CONT'D.**
- FULL COMPLIANCE WITH PART III OF THE SPECIAL PROVISIONS IS REQUIRED FOR THE INSTALLATION OF A.B.S. COMPOSITE PIPE.
 - MANHOLE WATER STOP BASKETS & CLAMPS ARE REQUIRED FOR THE CONNECTION OF A.B.S. COMPOSITE PIPE TO MANHOLE STRUCTURES.
 - A.B.S. SOID WALL PIPE MUST BE USED FOR WYE & HOUSE LATERAL CONNECTIONS TO A.B.S. COMPOSITE MANHOLE SEWER PIPE.
 - A.B.S. COMPOSITE PIPE SHALL BE BEDED IN CONFORMANCE WITH THE TABLE IN SECTION B-3.1 OF PART III OF THE SPECIAL PROVISIONS.
 - PIPE DEFLECTION FITTINGS ARE REQUIRED FOR RADII OF CURVATURE LESS THAN 250 FEET WHEN USING A.B.S. C.P.



GENERAL NOTES:

- ELEVATIONS ARE IN FEET ABOVE U.S.C. & G.S. SEA LEVEL DATUM OF 1929.
- NO REVISIONS SHALL BE MADE IN THESE PLANS WITHOUT THE APPROVAL OF THE COUNTY ENGINEER.
- NO REPRESENTATIVE OF THE COUNTY ENGINEER WILL SURVEY OR LAY OUT ANY PORTION OF THE WORK.
- GRADES TO WHICH THIS IMPROVEMENT IS TO BE CONSTRUCTED ARE SHOWN ON PLANS AND PROFILES. GRADE POINTS FOR TOP OF CURBS, CENTER LINE OF STREETS, OR CENTER LINE OF ALLEYS ARE SHOWN BY CIRCLES ON PROFILES. AT ALL POINTS BETWEEN DESIGNATED POINTS THE GRADE SHALL BE ESTABLISHED SO AS TO CONFORM TO A STRAIGHT LINE DRAWN BETWEEN SAID DESIGNATED POINTS.
- THE PRIVATE ENGINEER SHALL FURNISH THE COUNTY ENGINEER WITH GRADE SHEETS AND STATIONING FOR ALL HOUSE LATERALS AND "T" OR "Y" BRANCHES AND SHALL PROVIDE STAKES AT 10' INTERVALS WITH STATIONING PLANNED THERE. ALL HOUSE LATERALS SHALL BE CONSTRUCTED IN A STRAIGHT ALIGNMENT AT RIGHT ANGLES FROM THE MAIN LINE SEWER EXCEPT AS SHOWN ON THE PLANS. HOUSE LATERALS FROM CHIMNEYS SHALL NOT HAVE AN ANGLE OF LESS THAN 45° WITH THE MAIN LINE SEWER. ANY CHANGE IN ALIGNMENT SHALL BE REQUESTED IN WRITING BY THE PRIVATE ENGINEER.
- THE PRIVATE ENGINEER SHALL FURNISH THE HOUSE LATERAL DEPTH AT THE PROPERTY LINE BELOW THE TOP OF CURB ELEVATION FOR EACH HOUSE LATERAL ON THE GRADE SHEET.
- BEFORE WORK CAN BE STARTED, THE CONTRACTOR MUST OBTAIN A PERMIT TO EXCAVATE IN COUNTY STREETS FROM THE L.A. COUNTY ROAD DEPT., DISTRICT OFFICE NO. 1 AND PAY A FEE TO THE COUNTY ENGINEER, 201 E. BOWEN AVE., SAN DIMAS REGIONAL OFFICE, TO COVER THE COST OF CONSTRUCTION INSPECTION AND RECORD PLANS.
- IF WORK IS TO BE DONE IN A STATE HIGHWAY, A PERMIT MUST BE OBTAINED FROM THE STATE OF CALIFORNIA, DIVISION OF HIGHWAYS, 120 SOUTH SPRING STREET, LOS ANGELES, CALIFORNIA.
- APPROVAL OF THIS PLAN BY THE COUNTY OF LOS ANGELES DOES NOT CONSTITUTE A REPRESENTATION AS TO THE ACCURACY OF THE LOCATION OF OR THE EXISTENCE OR NON-EXISTENCE OF ANY UNDERGROUND UTILITY PIPE, OR STRUCTURE WITHIN THE LIMITS OF THIS PROJECT. THIS NOTE APPLIES TO ALL PAGES.
- REFER TO SECTION 7-10.1.1 OF THE STANDARD SPECIFICATIONS, REGARDING SAFETY CADDRES.
- PRIOR TO THE ISSUANCE OF THE REQUIRED SEWER CONSTRUCTION PERMIT, THE CONTRACTOR SHALL OBTAIN AND FILE WITH THE COUNTY ENGINEER COPIES OF A PERMIT TO EXCAVATE IN COUNTY STREETS FROM THE L.A. COUNTY ROAD DEPT., A PERMIT FOR EXCAVATIONS AND TRENCHES FROM THE STATE OF CALIF., DIVISION OF INDUSTRIAL SAFETY AND A CERTIFICATE OF WORKER'S COMPENSATION INSURANCE WITH THE DEPT. OF COUNTY ENGR. NAMED AS THE CONTRACTOR HOLDER TO BE RETURNED 30 DAYS PRIOR TO CANCELLATION OF POLICY.

CONSTRUCTION NOTES:

- WORK SHALL BE CONSTRUCTED ACCORDING TO THE STANDARD SPECIFICATIONS FOR PUBLIC WORKS CONSTRUCTION 1978 EDITION AND COUNTY ENGINEER SPECIAL PROVISIONS FOR THE CONSTRUCTION OF SANITARY SEWERS DATED SEPT. 2, 1976 AND SHALL BE PROCEEDED ONLY IN THE PRESENCE OF THE COUNTY ENGINEER.
- THE CONTRACTOR SHALL NOTIFY THE ENVIRONMENTAL DEVELOPMENT DIVISION PER (D) 158-2156 AT LEAST TWENTY-FOUR HOURS BEFORE STARTING ANY WORK UNDER THIS CONTRACT.
- HOUSE LATERALS TO BE CONSTRUCTED WITH INVERTS AT PROPERTY LINE & FIVE FEET BELOW CURB GRADE EXCEPT AS NOTED.
- IF THE EXISTING SEWER HAS BEEN RECONSTRUCTED TO MAINLINE SEWER EXCEPT AS NOTED.
- IF THE EXISTING SEWER HAS BEEN RECONSTRUCTED TO MAINLINE SEWER EXCEPT AS NOTED.
- ALL STRUCTURES SHALL BE BUILT TO THE STANDARD SPECIFICATIONS SECTION 300.2.
- PROVIDE STAKES ON THE PROPERTY LINE OR PROPERTY LINES PRODUCED AT RIGHT ANGLES TO THE SEWER LINE AT THE CENTER LINE OF EACH MANHOLE.
- MANHOLE TOPS IN UNIMPROVED RIGHTS OF WAY TO BE SIX INCHES ABOVE FINISHED GRADE.
- VITRIFIED CLAY PIPE JOINTS SHALL BE TYPE "B" OR "C" PER STANDARD SPECIFICATIONS SECTION 300.2.
- IF A POWER POLE IS WITHIN THREE FEET OF THE SEWER, THE SEWER SHALL BE ENCASED, PER S-23, CASE 2, TWO FEET ON EACH SIDE FROM THE POINT OF INTERFERENCE.
- IF DURING THE COURSE OF CONSTRUCTION IT IS DETERMINED THAT THERE IS LESS THAN FOUR FEET OF COVER OVER THE TOP OF A MAIN LINE OR HOUSE LATERAL V.C.P. SEWER WHICH IS NOT INDICATED ON THE PLANS, THE PIPE SHALL BE ENCASED PER S-23, CASE 2 UNLESS OTHERWISE APPROVED BY THE COUNTY ENGINEER.
- ALL JOINTS BETWEEN CLAY PIPE AND VITRIFIED CLAY PIPE SHALL BE MADE WITH A RUBBER SLEEVE JOINT, TYPE "C" OR "B", WITH BUSHING IF NECESSARY PER STANDARD SPECIFICATIONS SECTION 300.2.
- ALL JOINTS BETWEEN VITRIFIED CLAY PIPE AND VITRIFIED CLAY PIPE SHALL BE MADE WITH A RUBBER SLEEVE JOINT, TYPE "C" OR "B", WITH BUSHING IF NECESSARY PER STANDARD SPECIFICATIONS SECTION 300.2.
- RESURFACE ALL TRENCHES WITHIN PAVED AREAS TO MEET L.A. COUNTY ROAD DEPT. OR CALIFORNIA STATE HIGHWAY REQUIREMENTS IN ACCORDANCE WITH PERMITS.
- PERFORMANCE WITH SECTION 300.1.8 OF THE SPECIAL PROVISIONS WILL BE REQUIRED FOR BACKFILL IN STREETS. CERTIFICATION OF BACKFILL COMPACTION AND SAND EQUIVALENTS BY A QUALIFIED, REGISTERED TESTING LABORATORY SHALL BE PROVIDED BY THE PERMITTEE PRIOR TO THE ISSUANCE OF A CERTIFICATE OF FINAL ACCEPTANCE.
- SPECIAL BACKFILL IN EASEMENT CONSTRUCTION
 (A) BACKFILL TRENCHES & REPLACE OTHER EARTH REMOVED SO AS TO ACQUIRE THE NATURE OF FINISHED GRADES & SLOPES SHOWN ON THE EXISTING PLAN APPROVED FOR THIS DEVELOPMENT BY THE COUNTY ENGINEER.
 (B) ALL BACKFILL & EARTH REPLACES SHALL BE COMPACTED TO A MIN. OF 90% OF MAX. DENSITY PER A.S.T.M. 31D. METHOD OF TESTING D698-57T AS APPROVED ACCEPTABLE CERTIFICATION OF SOIL COMPACTION SHALL BE SUBMITTED TO THE ENVIRONMENTAL DEVELOPMENT DIVISION.

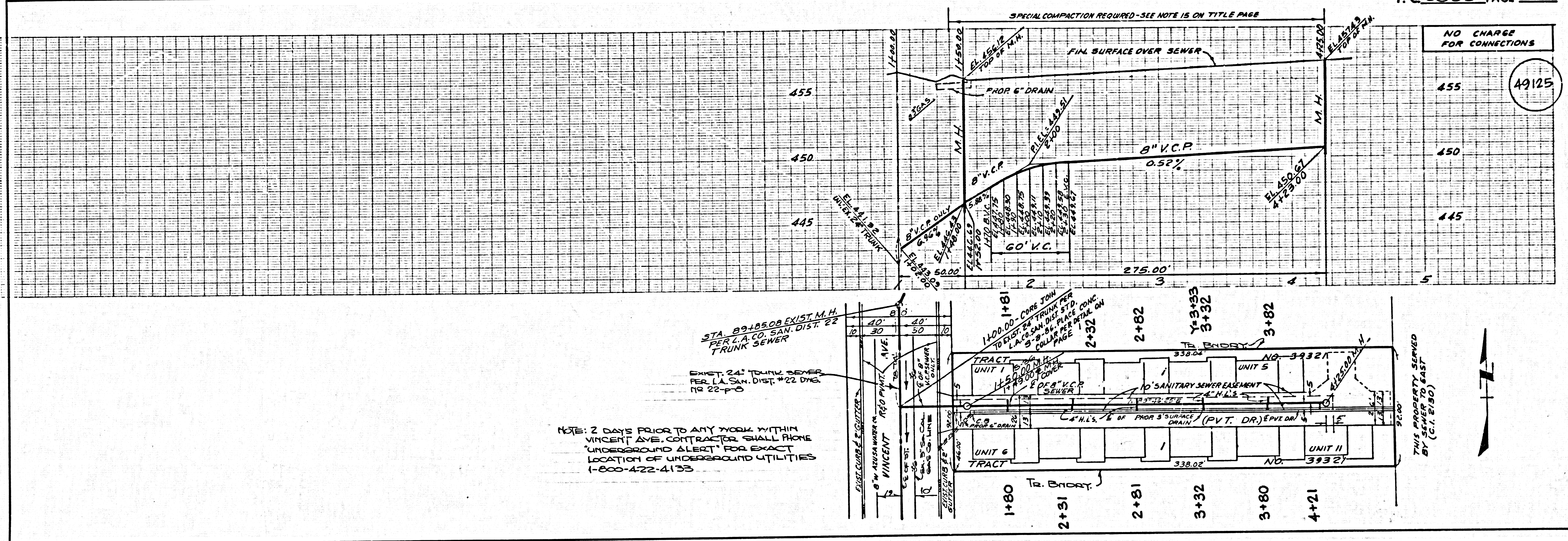
TO BE CONSTRUCTED IN
TRACT NO. 39321
 PRIVATE CONTRACT NO. 2855

W.S. 47-B, 4
 1 SHEET, 2 PAGES (49124)
 SCALE: VERT. 1"=4' HORIZ. 1"=40' MAY, 1980
 PREPARED IN THE OFFICES OF
 LIND E. MILLER INC.
 200 S. HUNTINGTON DRIVE
 SAN DIMAS, CALIF. 91768
 BY: *John J. ...*
 REG. C.E. No. 12233

THE FOLLOWING LATEST REVISED STANDARD PLANS ON FILE IN THE OFFICE OF THE COUNTY ENGINEER SHALL APPLY IN THE CONSTRUCTION OF THIS PROJECT.

LEGEND	5-1
MINIMUM PUBLIC SAFETY REQUIREMENTS	5-2
BRICK MANHOLES	5-3
STANDARD MANHOLE STOP	5-7
BEDDING FOR SEWER PIPE	5-8
CLADDING AND ENCASING	5-9
TYPE OF THE SUPPORT	5-10
ALLOWABLE TRENCH WIDTHS	5-11
LOCKING MANHOLE FRAMES AND COVERS	5-12
NON-REINFORCED PRECAST CONCRETE MANHOLES	5-13
BEDDING REQUIREMENTS FOR PLASTIC PIPE	5-21A

COUNTY OF LOS ANGELES, CALIFORNIA
 STEPHEN J. KOONCE, COUNTY ENGINEER WALTER S. GARRISON, CHIEF ENGINEER
 APPROVED *John J. Miller 7/23/80* APPROVED *Frank R. ... 7/23/80*
 SAN DIMAS REGIONAL ENGINEER DISTRICT OFFICE ENGINEER
 CHECKED *Ralph Paul Sant 7/23/80*
 REG. C.E. NO. 16993
 SAN DIMAS BLDG. DIST. 10.00



NOTE: 2 DAYS PRIOR TO ANY WORK WITHIN VINCENT AVE., CONTRACTOR SHALL PHONE "UNDERGROUND ALERT" FOR EXACT LOCATION OF UNDERGROUND UTILITIES 1-800-422-4133