

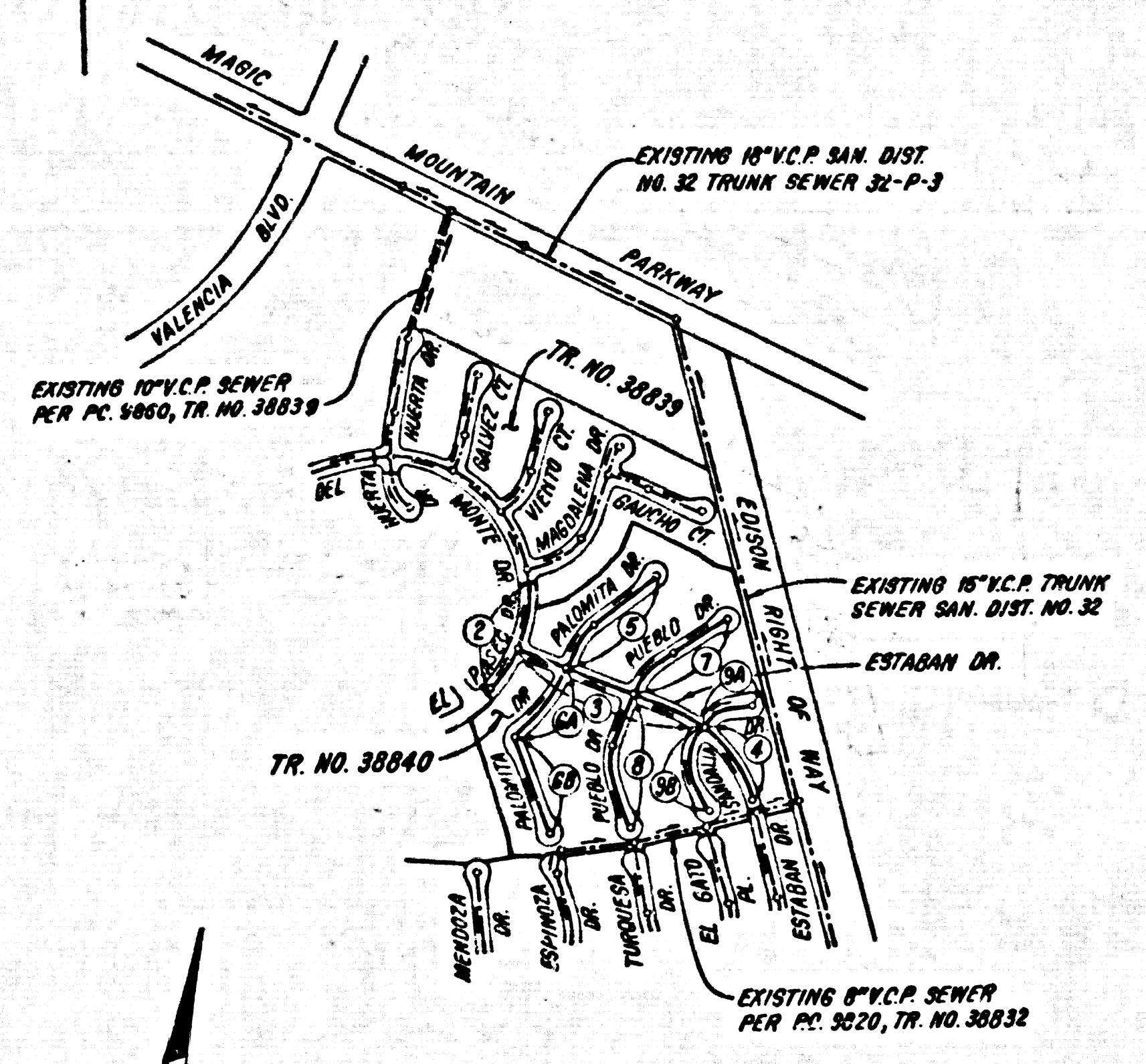
TRACT NO. 38840
 PRIVATE CONTRACT NO. 9862
 INDEX 261-125
 W.S. 62

5 SHEETS, 8 PAGES
 SCALE: VERT. 1" = 4'
 HORIZ. 1" = 40'
 FEBRUARY 6, 1961
 PREPARED IN THE OFFICES OF
 SIKAND ENGINEERING ASSOCIATES
 15230 BURBANK BLVD.
 VAN NUYS, CALIFORNIA 91411 (213) 787-8550
 BY: *Naval C. 197-67*
 REG. C. E. No. 21033

50347

B.M. BL 4326 ELEV. 1211.232
 RD ON TAG N CB AVENIDA NAVARRE
 77 E + 30 N/O INT. MCBEAN PKWY
 @ N.E. COR
 QUAD. 19.72

REVISION NO. 1 DATE 10-15-61
 PAGE 3 REVISED LOT LINES FOR LOTS 16, 17, & 41.
 PAGE 5 REVISED LOT LINES, DIMENSIONS, & H.L.'S FOR LOTS 41 THRU 63.
 PAGE 7 REVISED LOT LINES, DIMENSIONS, & H.L.'S FOR LOTS 17 THRU 37.
 PAGE 9 REVISED LOT LINES, DIMENSIONS, & H.L.'S FOR LOTS 10 THRU 15.
 APPROVED BY: *Ralph David Sargent* 11/2/61
 OFFICE OF THE COUNTY ENGINEER / R.C.E. NO. 16543



INDEX MAP
 SCALE: 1" = 600'
 P.C. 9862
 TRACT NO. 38840

NOTE: NUMBERS IN CIRCLES INDICATE PAGE

NO CONNECTION FOR THE DISPOSAL OF INDUSTRIAL WASTES SHALL BE MADE TO SEWERS SHOWN ON THESE DRAWINGS UNTIL A PERMIT FOR INDUSTRIAL WASTEWATER DISCHARGE HAS BEEN ISSUED BY THE SANITATION DISTRICTS FOR SAID CONNECTION.
 BEFORE BREAKING INTO OR CONSTRUCTION ON A COUNTY SANITATION DISTRICT SEWER AND PRIOR TO FINAL ACCEPTANCE OF THE PROJECT, SANITATION DISTRICT INSPECTOR SHALL BE NOTIFIED BY PHONE - 962-8605, 432-1143 SO THAT REQUIRED INSPECTION CAN BE MADE.

ALLOW NO HOUSE CONNECTION PERMITS UNTIL OUTLET P.C. 9862 IS ACCEPTED.

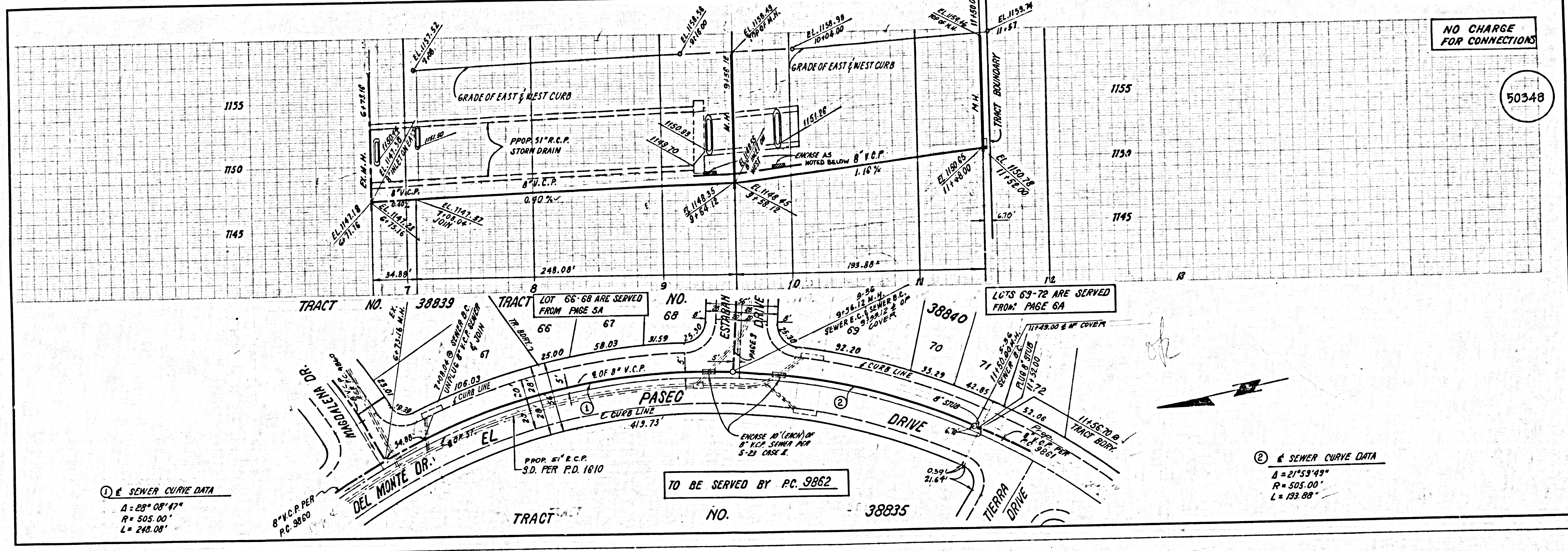
- GENERAL NOTES:
1. ELEVATIONS ARE IN FEET ABOVE U.S.C. & G.S. SEA LEVEL DATUM OF 1929.
 2. NO REVISIONS SHALL BE MADE IN THESE PLANS WITH THE APPROVAL OF THE COUNTY ENGINEER.
 3. NO IMPROVEMENTS OF THE COUNTY ENGINEER WILL BE MADE OR LAY OUT ANY PORTION OF THE WORK.
 4. GRADES TO WHICH THIS IMPROVEMENT IS TO BE CONSTRUCTED ARE SHOWN ON PLANS AND PROFILES. GRADE POINTS FOR TOP OF CURBS, CENTER LINE OF STREETS, OR CENTER LINE OF ALLEYS ARE SHOWN BY CIRCLES OR IN THE DRAWING BETWEEN SAID DESIGNATED POINTS THE GRADE SHALL BE ESTABLISHED SO AS TO CONFORM TO A STRAIGHT LINE DRAWN BETWEEN SAID DESIGNATED POINTS.
 5. THE PRIVATE ENGINEER SHALL FURNISH THE COUNTY ENGINEER WITH GRADE SHEETS AND STATIONING FOR ALL HOUSE LATERALS AND "T" OR "Y" BRANCHES AND SHALL PROVIDE STAKES FOR THEM AT THEIR PROPER LOCATIONS WITH STATIONING PLAINLY MARKED. ALL HOUSE LATERALS SHALL BE CONSTRUCTED IN A STRAIGHT ALIGNMENT AT RIGHT ANGLES FROM THE MAIN LINE SEWER EXCEPT AS SHOWN ON THE PLANS. HOUSE LATERALS FROM CHIMNEYS SHALL NOT HAVE AN ANGLE OF LESS THAN 45° WITH THE MAIN LINE SEWER. ANY CHANGE IN ALIGNMENT SHALL BE INDICATED BY WRITING BY THE PRIVATE ENGINEER.
 6. THE PRIVATE ENGINEER SHALL FURNISH THE HOUSE LATERAL DRYPIPE AT THE PROPERTY LINE BELOW THE TOP OF CURB ELEVATION FOR EACH HOUSE LATERAL ON THE CURB STREET.
 7. BEFORE WORK CAN BE STARTED, THE CONTRACTOR MUST OBTAIN A PERMIT TO EXCAVATE IN COUNTY STREETS FROM THE L.A. COUNTY ROAD DEPT., DISTRICT OFFICE NO. 3, AND PAY A FEE TO THE COUNTY ENGINEER, 608 SOUTH WENDY WAY, LOS ANGELES, CALIFORNIA 90020 TO COVER THE COST OF CONSTRUCTION INSPECTOR AND RECORD PLANS.
 8. IF WORK IS TO BE DONE IN A STATE HIGHWAY, A PERMIT MUST BE OBTAINED FROM THE STATE OF CALIFORNIA, DIVISION OF HIGHWAYS, 120 SOUTH SPRING STREET, LOS ANGELES, CALIFORNIA.
 9. APPROVAL OF THIS PLAN BY THE COUNTY OF LOS ANGELES DOES NOT CONSTITUTE A REPRESENTATION AS TO THE ACCURACY OF THE LOCATION OF OR THE EXISTENCE OR NON-EXISTENCE OF ANY UNDERGROUND UTILITY PIPE, OR STRUCTURE WITHIN THE LIMITS OF THE PROJECT. THIS NOTE APPLIES TO ALL PAGES.
 10. REFER TO SECTION 118.61 OF THE STANDARD SPECIFICATIONS REGARDING SAFETY ORDERS.
 11. PRIOR TO THE ISSUANCE OF THE REQUIRER SEWER CONSTRUCTION PERMIT, THE CONTRACTOR SHALL OBTAIN AND FILE WITH THE CITY ENGINEER COPIES OF A PERMIT TO EXCAVATE IN CITY STREETS FROM THE LOS ANGELES COUNTY ROAD DEPARTMENT, A PERMIT FOR EXCAVATIONS AND TRENCHES FROM THE STATE OF CALIFORNIA, DIVISION OF INDUSTRIAL SAFETY AND A CERTIFICATE OF WORKMAN'S COMPENSATION INSURANCE WITH THE DEPARTMENT OF COUNTY ENGINEER, 650 SOUTH WENDY WAY, ROOM 402, LOS ANGELES, CALIFORNIA 90020, NAMED AS THE CERTIFICATE HOLDER TO BE NOTIFIED 30 DAYS PRIOR TO CANCELLATION OF POLICY.

- CONSTRUCTION NOTES:
1. WORK SHALL BE CONSTRUCTED ACCORDING TO THE STANDARD SPECIFICATIONS FOR PUBLIC WORKS CONSTRUCTION (1958 EDITION) WITH 1960 SUPPLEMENTS AND COUNTY ENGINEER SPECIAL PROVISIONS FOR THE CONSTRUCTION OF SANITARY SEWERS BASED WITH 1960 SPECIFICATIONS AND SHALL BE PROSECUTED ONLY IN THE PRESENCE OF THE COUNTY ENGINEER.
 2. THE CONTRACTOR SHALL NOTIFY THE SANITATION DISTRICTS BY TELEPHONE 248-3847 AT LEAST TWENTY-FOUR HOURS BEFORE STARTING ANY WORK UNDER THIS CONTRACT.
 3. HOUSE LATERALS TO BE CONSTRUCTED WITH BRICKS AT PROPERTY LINE & FEET BELOW CURB GRADE EXCEPT AS NOTED.
 4. WYE OR TE BRANCHES MAY BE USED FOR CONNECTIONS TO MAINLINE SEWERS EXCEPT AS NOTED.
 5. ALL STRUCTURES SHALL BE BUILT BRICK MANHOLES PER S-23 OR PRECAST CONCRETE MANHOLES PER S-24, EXCEPT AS NOTED.
 6. PROVIDE STAKES ON THE PROPERTY LINE OR PROPERTY LINE PRODUCE AT RIGHT ANGLES TO THE SEWER LINE AT THE CENTER LINE OF EACH MANHOLE.
 7. MANHOLE TOPS IN UNIMPROVED RIGHTS OF WAY TO BE SIX INCHES ABOVE FINISHED GRADE.
 8. WITHIN CLAY PIPE JOINTS SHALL BE TYPE "B", "C" OR "D" PER STANDARD SPECIFICATIONS SECTION 300-2.
 9. IF A POWER POLE IS WITHIN THREE FEET OF THE SEWER, THE SEWER SHALL BE ENCASED PER S-25, CASE II TWO FEET ON EACH SIDE FROM THE POINT OF INTERFERENCE.
 10. IF DURING THE COURSE OF CONSTRUCTION IT IS DETERMINED THAT THERE IS LESS THAN FOUR FEET OF COVER OVER THE TOP OF A MAIN LINE OR HOUSE LATERAL V.C.P. SEWER WHICH IS NOT INDICATED ON THE PLANS, THE PIPE SHALL BE ENCASED PER S-25, CASE II UNLESS OTHERWISE APPROVED BY THE COUNTY ENGINEER.
 11. ALL JOINTS BETWEEN CLAY PIPE AND WITHIN CLAY PIPE SHALL BE MADE WITH A RUBBER SLAVE JOINT, TYPE "C" OR "D", (WITH SUGGESTION IF NECESSARY) PER STANDARD SPECIFICATIONS, SECTION 300-2.
 12. SEWERS TO BE TESTED FOR LEAKAGE PER SECTION 300-1.6 OF THE STANDARD SPECIFICATIONS AND SPECIAL PROVISIONS IN ACCORDANCE WITH PERMITS.
 13. REPAIRS TO ALL TRENCHES WITHIN PAVED AREAS TO MEET L.A. COUNTY ROAD DEPT. OR CALIFORNIA STATE HIGHWAY REQUIREMENTS IN ACCORDANCE WITH PERMITS.
 14. FULL COMPLIANCE WITH SECTION 300-1.2 OF THE SPECIAL PROVISIONS WILL BE REQUIRED FOR BACKFILL IN STREETS. PROVISIONS OF BACKFILL COMPACTION AND SAND EQUIVALENTS BY A QUALIFIED, REGISTERED TESTING LABORATORY SHALL BE FURNISHED PRIOR TO THE ISSUANCE OF A CERTIFICATE OF PARTIAL ACCEPTANCE.

THE FOLLOWING LATEST EDITION STANDARD PLANS ON FILE IN THE OFFICE OF THE COUNTY ENGINEER SHALL APPLY IN THE CONSTRUCTION OF THIS PROJECT:

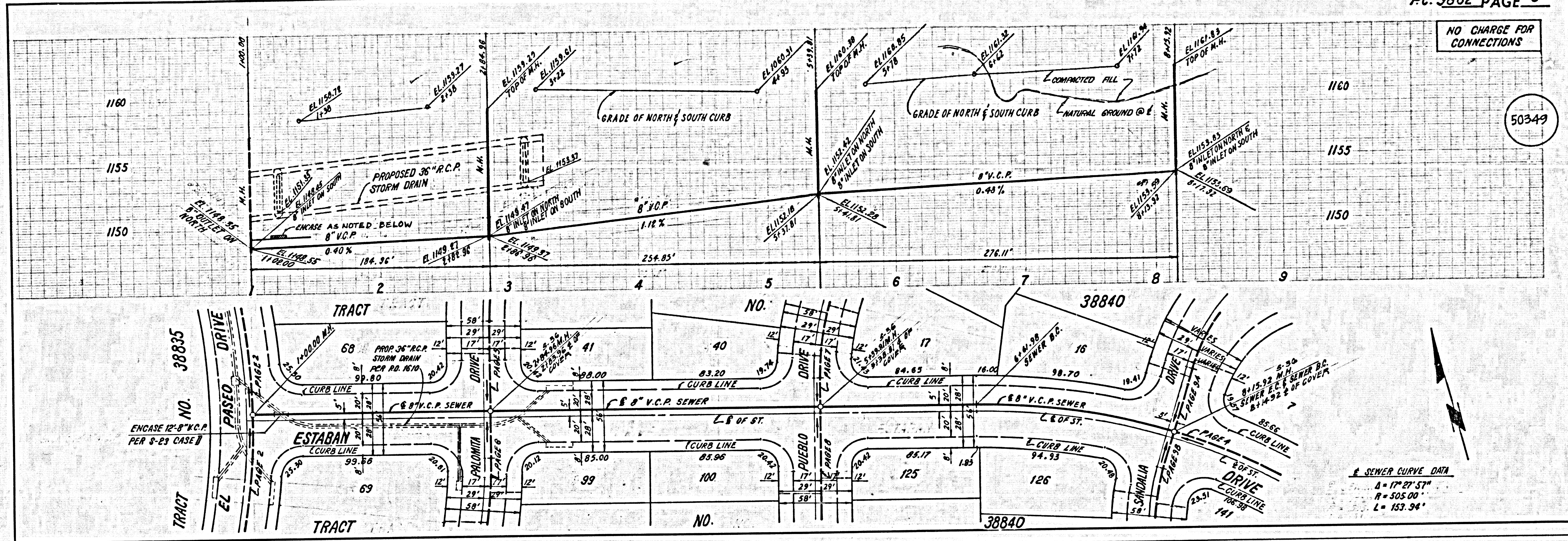
STANDARD SPECIFICATIONS	6-1
MINIMUM PUBLIC SAFETY REQUIREMENTS	6-2
BRICK MANHOLES	6-27
STANDARD MANHOLE RINGS	6-28
RECORDING FOR SEWER PIPE	6-29
CRACKING AND ENCASING	6-30
WYE OR TE SUPPORT	6-31
ALWAYSING TRENCH WORK	6-32
LOCKING MANHOLE PLANS AND COVERS	6-33
NON-APPROVED PRECAST CONCRETE MANHOLES	6-34

COUNTY OF LOS ANGELES, CALIFORNIA
 STEPHEN J. MOONCE, COUNTY ENGINEER WALTER E. GARRISON, CHIEF ENGINEER
 APPROVED: *Walter E. Garrison* 3-17-61 DATE: *3/29/61*
 CHECKED: *Drew Elphelton* 3/19/61 DATE: *3/19/61*
 REG. C. E. NO. 25559
 SANTA CLARITA BLDG. DIST. 22



NO CHARGE FOR CONNECTIONS

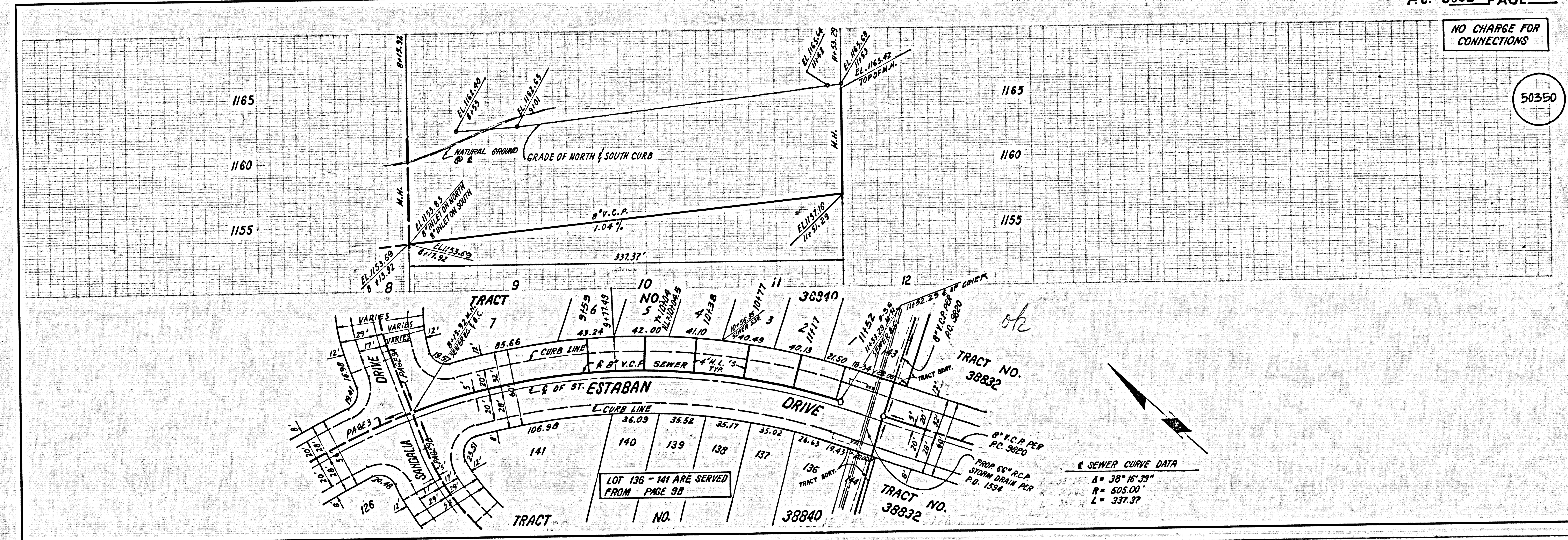
50349



SEWER CURVE DATA
 $\Delta = 17^\circ 21' 57''$
 $R = 505.00'$
 $L = 153.34'$

NO CHARGE FOR CONNECTIONS

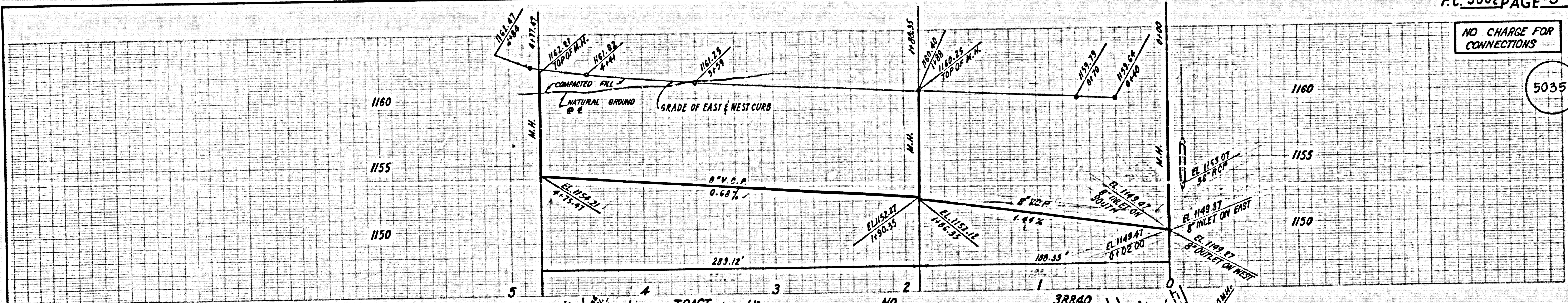
50350



SEWER CURVE DATA
 $\Delta = 36^\circ 16' 39''$
 $R = 505.00'$
 $L = 337.37'$

NO CHARGE FOR CONNECTIONS

50351

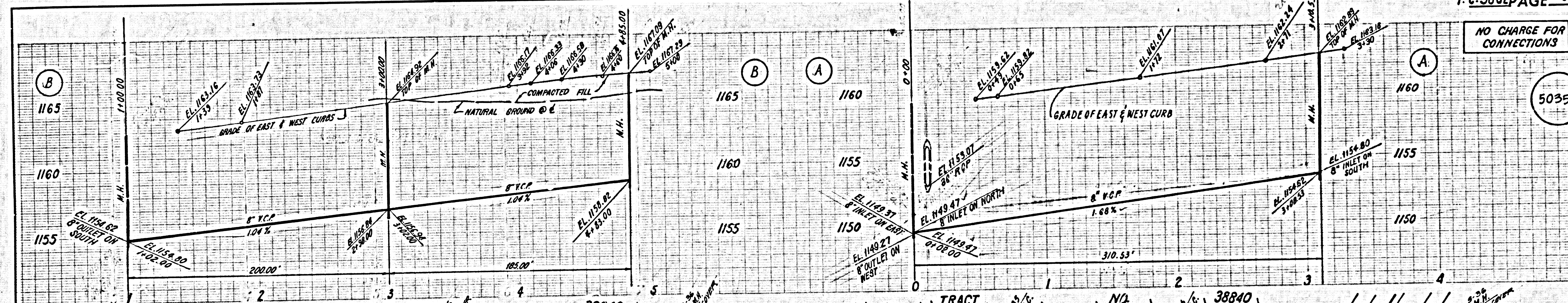


SEWER CURVE DATA
 $\Delta = 30^{\circ}33'30''$
 $R = 180.00$
 $L = 96.00$

SEWER CURVE DATA
 $\Delta = 31^{\circ}32'44''$
 $R = 215.00$
 $L = 118.37$

NO CHARGE FOR CONNECTIONS

50352

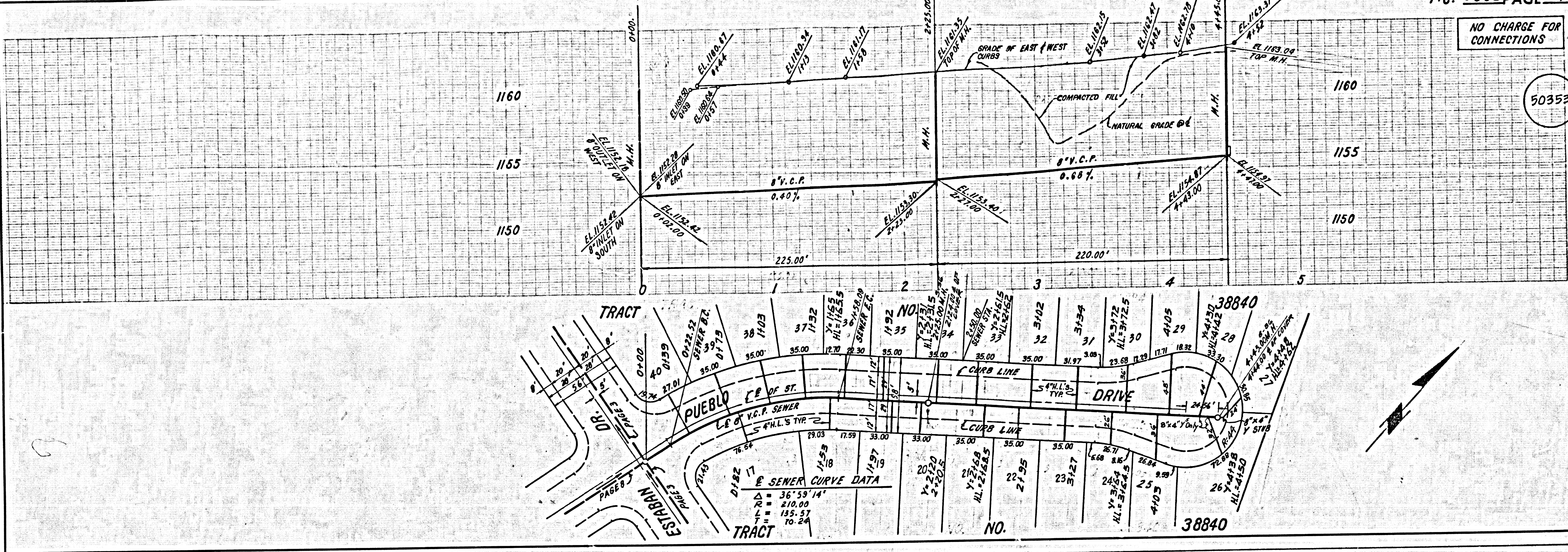


SEWER CURVE DATA
 $\Delta = 21^{\circ}43'19''$
 $R = 355.00$
 $L = 135.21$

LC 9862 3

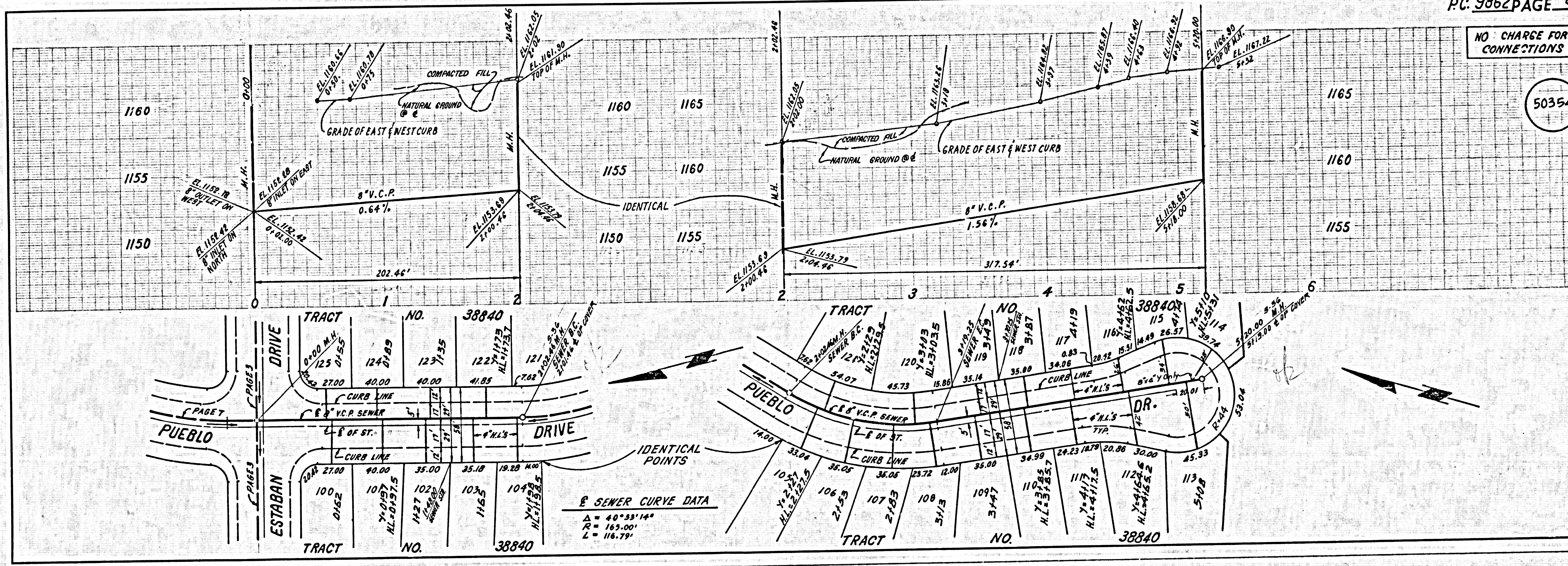
NO CHARGE FOR CONNECTIONS

50353



NO CHARGE FOR CONNECTIONS

50354



L.A. COUNTY SEWER SHEET NO. 2 SOUTHERN CALIFORNIA BLUEPRINT CO. 2025 6-79

4 BC 2880 NO 2880 17000

NO CHARGE FOR CONNECTIONS

50355

