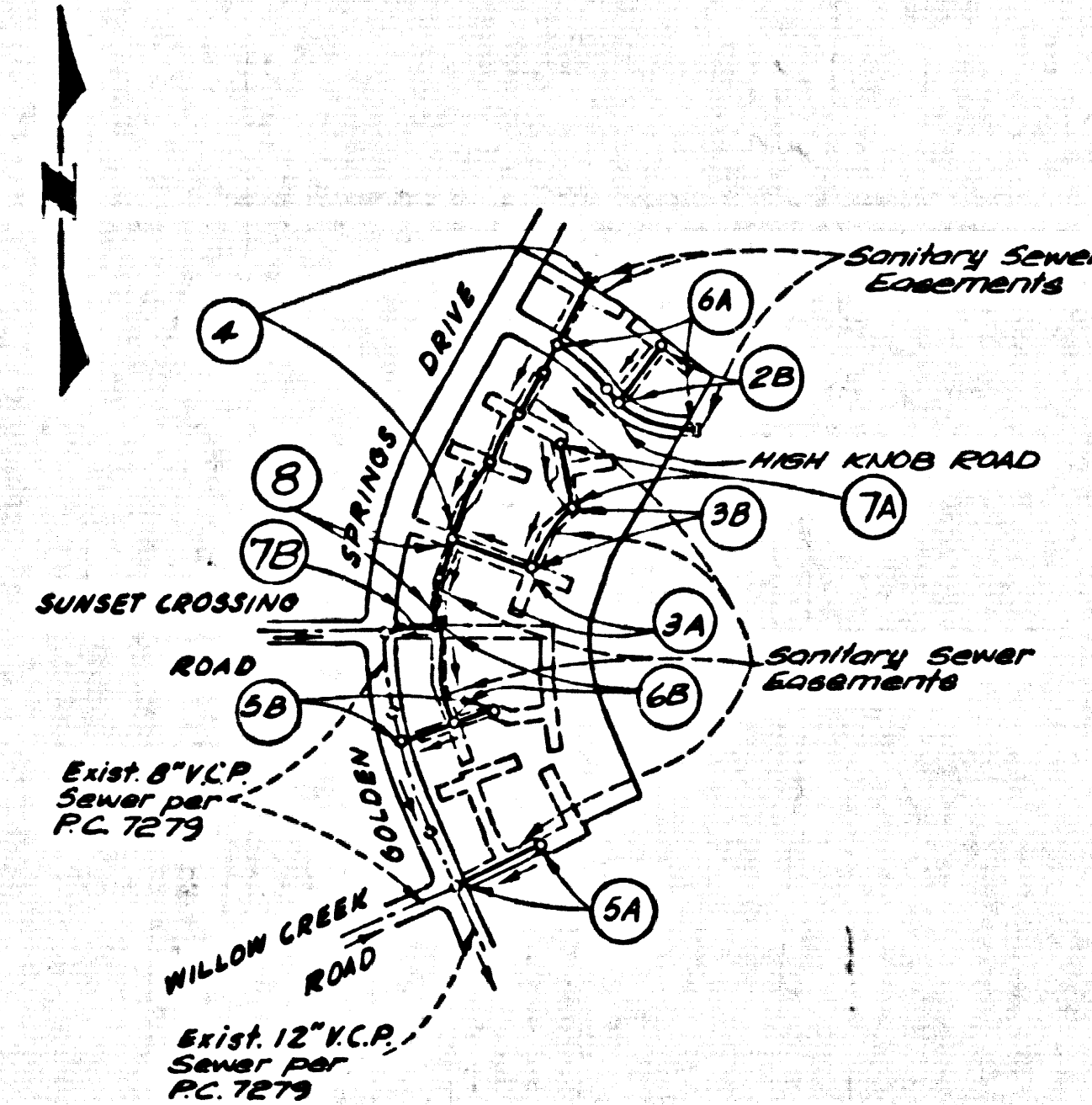


B.M. CG 3922 ELEV. 872.750

S & L IN CB 5 FT S BCR 20 FT  
WLY & 82 FT SLY CAL INT  
DIAMOND BAR BLVD. & SOLTIAIRE ST.  
OTTERBEIN QUAD. 1975



INDEX MAP  
P.C. 9863, TRACT NO. 40386  
SCALE: 1" = 600'

NOTE:  
NUMBERS IN CIRCLES INDICATE  
PAGE NUMBERS.

REVISION NO. 1 DATE 7/15/81  
ADDED PGE. 7-B & PGE. 8 PLAN & PROFILE.  
VOIDED PGE. 2-A & A PORTION OF PGE. 3-A.  
CSTR. 1400.00 TO STR. 5137.43 ADDED A HOUSE  
LATERAL ON PGE. 4  
APPROVED *Ralph David Deist* 8/6/81  
OFFICE OF COUNTY ENGINEER

NO CONNECTION FOR THE DISPOSAL OF INDUSTRIAL WASTES  
SHALL BE MADE TO SEWERS SHOWN ON THESE DRAWINGS UNTIL  
A PERMIT FOR INDUSTRIAL WASTEWATER DISCHARGE HAS BEEN  
ISSUED BY THE SANITATION DISTRICTS FOR SAID CONNECTION.  
BEFORE BREAKING INTO OR CONSTRUCTING ON A COUNTY  
SANITATION DISTRICT SEWER AND PRIOR TO FINAL  
ACCEPTANCE OF THE PROJECT, SANITATION DISTRICT  
INSPECTOR SHALL BE NOTIFIED BY PHONE - 962-8605,  
962-8686 SO THAT REQUIRED INSPECTION CAN BE MADE.

GENERAL NOTES:

1. ELEVATIONS ARE IN FEET ABOVE U.S.C. & G.S. SEA LEVEL DATUM OF 1929.
2. NO REVISIONS SHALL BE MADE IN THESE PLANS WITHOUT THE APPROVAL OF THE COUNTY ENGINEER.
3. NO REPRESENTATIVE OF THE COUNTY ENGINEER WILL SURVEY OR LAY OUT ANY PORTION OF THE WORK.
4. GRADES TO WHICH THIS IMPROVEMENT IS TO BE CONSTRUCTED ARE SHOWN ON PLANS AND PROFILES. GRADE POINTS FOR TOP OF CURB, CENTER LINE OF STREETS, OR CENTER LINE OF ALLEYS ARE SHOWN BY CIRCLES ON PROFILES. AT ALL POINTS BETWEEN DESIGNATED POINTS THE GRADE SHALL BE ESTABLISHED SO AS TO CONFORM TO A STRAIGHT LINE DRAWN BETWEEN SAID DESIGNATED POINTS.
5. THE PRIVATE ENGINEER SHALL FURNISH THE COUNTY ENGINEER WITH GRADE SHEETS AND STATIONING FOR ALL HOUSE LATERALS AND "Y" OR "T" BRANCHES AND SHALL PROVIDE STAKES FOR THEM AT THEIR PROPER LOCATIONS WITH STATIONING PLAINLY MARKED. ALL HOUSE LATERALS SHALL BE CONSTRUCTED IN A STRAIGHT ALIGNMENT AT RIGHT ANGLES FROM THE MAIN LINE SEWER EXCEPT AS SHOWN ON THE PLANS. HOUSE LATERALS FROM CHIMNEYS SHALL HAVE AN ANGLE OF LESS THAN 45° WITH THE MAIN LINE SEWER. ANY CHANGE IN ALIGNMENT SHALL BE REQUESTED IN WRITING BY THE PRIVATE ENGINEER.
6. THE PRIVATE ENGINEER SHALL FURNISH THE HOUSE LATERAL DEPTH AT THE PROPERTY LINE BELOW THE TOP OF CURB ELEVATION FOR EACH HOUSE LATERAL ON THE GRADE SHEET.
7. BEFORE WORK CAN BE STARTED, THE CONTRACTOR MUST OBTAIN A PERMIT TO EXCAVATE IN COUNTY STREETS FROM THE L.A. COUNTY ROAD DEPT., DISTRICT OFFICE NO. 1, AND PAY A FEE TO THE COUNTY ENGINEER, P.O. BOX 1000, SAN DIMAS, CALIF. 91761.
8. IF WORK IS TO BE DONE IN A STATE HIGHWAY, A PERMIT MUST BE OBTAINED FROM THE STATE OF CALIFORNIA, DIVISION OF HIGHWAYS, 1300 SOUTH SPRING STREET, LOS ANGELES, CALIFORNIA.
9. APPROVAL OF THIS PLAN BY THE COUNTY OF LOS ANGELES DOES NOT CONSTITUTE A REPRESENTATION AS TO THE ACCURACY OF THE LOCATION OF OR THE EXISTENCE OR NON-EXISTENCE OF ANY UNDERGROUND UTILITY PIPE, OR STRUCTURE WITHIN THE LIMITS OF THIS PROJECT. THIS NOTE APPLIES TO ALL PAGES.
10. REFER TO SECTION 7-14.1 OF THE STANDARD SPECIFICATIONS, REGARDING SAFETY ORDERS.
11. PRIOR TO ISSUANCE OF THE REQUIRED SEWER CONSTRUCTION PERMIT BY THE COUNTY ENGINEER THE CONTRACTOR SHALL OBTAIN A PERMIT TO EXCAVATE FROM THE STATE OF CALIFORNIA, DEPARTMENT OF INDUSTRIAL RELATIONS, DIVISION OF INDUSTRIAL SAFETY AND SHALL FILE A CERTIFICATE OF HAZARDOUS CONSTRUCTION JURISDICTION AND LIABILITY INSURANCE WITH THE COUNTY ENGINEER. THE CONTRACTOR SHALL BE NOTIFIED 30 DAYS PRIOR TO CANCELLATION OF POLICY.

CONSTRUCTION NOTES:

1. WORK SHALL BE CONSTRUCTED ACCORDING TO THE STANDARD SPECIFICATIONS FOR PUBLIC WORKS CONSTRUCTION (1979 EDITION WITH 1980 SUPPLEMENT) AND COUNTY ENGINEER SPECIAL PROVISIONS FOR THE CONSTRUCTION OF SANITARY SEWERS DATED SEPTEMBER 21, 1978, AND SHALL BE PROSECUTED ONLY IN THE PRESENCE OF THE COUNTY ENGINEER.
2. THE CONTRACTOR SHALL NOTIFY THE "SUPERVISOR/INSPECTOR" DIVISION BY TELEPHONE (909) 798-2966, AT LEAST TWENTY (20) HOURS BEFORE STARTING ANY WORK UNDER THIS CONTRACT.
3. HOUSE LATERALS TO BE CONSTRUCTED WITH 8" VITRIFIED CLAY PIPE 2" BELOW CURB GRADE EXCEPT AS NOTED.
4. WYE OR TEE BRANCHES MAY BE USED FOR CONNECTIONS TO MAINLINE SEWERS EXCEPT AS NOTED.
5. ALL STRUCTURES SHALL BE WITHIN BRICK MANHOLE PER 5.4 ON PRECAST CONCRETE MANHOLES PER 5.26, EXCEPT AS NOTED.
6. PROFILE GRADES ON THE PROPERTY LINE OR PROPERTY LINES PRODUCED AT RIGHT ANGLES TO THE SEWER LINE AT THE CENTER LINE OF EACH MANHOLE.
7. MANHOLE TOPS IN UNIMPROVED RIGHTS OF WAY TO BE SIX INCHES ABOVE FINISHED GRADE.
8. VITRIFIED CLAY PIPE JOINTS SHALL BE TYPE "B", OR "D" PER STANDARD SPECIFICATIONS SECTION 506-2.
9. IF A POWER POLE IS WITHIN THREE FEET OF THE SEWER, THE SEWER SHALL BE ENCASED, PER 5.25, CASE 2, TWO FEET ON EACH SIDE FROM THE POINT OF INTERFERENCE.
10. IF DURING THE COURSE OF CONSTRUCTION IT IS DETERMINED THAT THERE IS LESS THAN FOUR FEET OF COVER OVER THE TOP OF A MAIN LINE OR HOUSE LATERAL V.C.P. SEWER WHICH IS NOT INDICATED ON THE PLANS, THE PIPE SHALL BE ENCASED PER 5.25, CASE 2 UNLESS OTHERWISE APPROVED BY THE COUNTY ENGINEER.
11. ALL JOINTS BETWEEN CAST IRON PIPE AND VITRIFIED CLAY PIPE SHALL BE MADE WITH A RUBBER SLEEVE JOINT, TYPE "C" OR "F", WITH BURNING IF NECESSARY PER STANDARD SPECIFICATIONS, SECTION 506-3.
12. SEWERS TO BE TESTED FOR LEAKAGE PER SECTION 506-1.4 OF THE STANDARD SPECIFICATIONS AND SPECIAL PROVISIONS.
13. REPLACEMENT ALL TRENCHES WITHIN PAVED AREAS TO MEET L.A. COUNTY ROAD DEPT. OR CALIFORNIA STATE HIGHWAY REQUIREMENTS IN ACCORDANCE WITH PERMITS.
14. FULL COMPLIANCE WITH SECTION 306.1.3(B) OF THE SPECIAL PROVISIONS WILL BE REQUIRED FOR SACRIFICE IN STREETS. CERTIFICATION OF SUFFICIENT COMPACTION AND SAND EQUIVALENT BY A QUALIFIED REGISTERED TESTING LABORATORY SHALL BE PROVIDED BY THE PERMITTEE PRIOR TO THE ISSUANCE OF A CERTIFICATE OF PARTIAL ACCEPTANCE.
15. SPECIAL BACKFILL IN DESIGNATED AREAS:  
(A) BACKFILL TRENCH AND SURFACE DEPTH REQUIRES AS TO ACHIEVE THE NATURAL OR FINISHED GRADE AND SLOPE (AS SHOWN) IN THE ORIGINAL PLAN APPROVED FOR THIS TRACT AND IN THE BUILDING AND SAFETY DIVISION.  
(B) ALL BACKFILL AND FILL SHALL BE PLACED IN A MINIMUM OF 10% OF MAXIMUM DENSITY PER A.C.T.M. 500-2.50. TESTING OF "TESTED" MATERIAL AS MODIFIED. CERTIFIABLE CERTIFICATION OF SUCH COMPACTION SHALL BE SUBMITTED BY THE ENVIRONMENTAL DEVELOPMENT DIVISION.

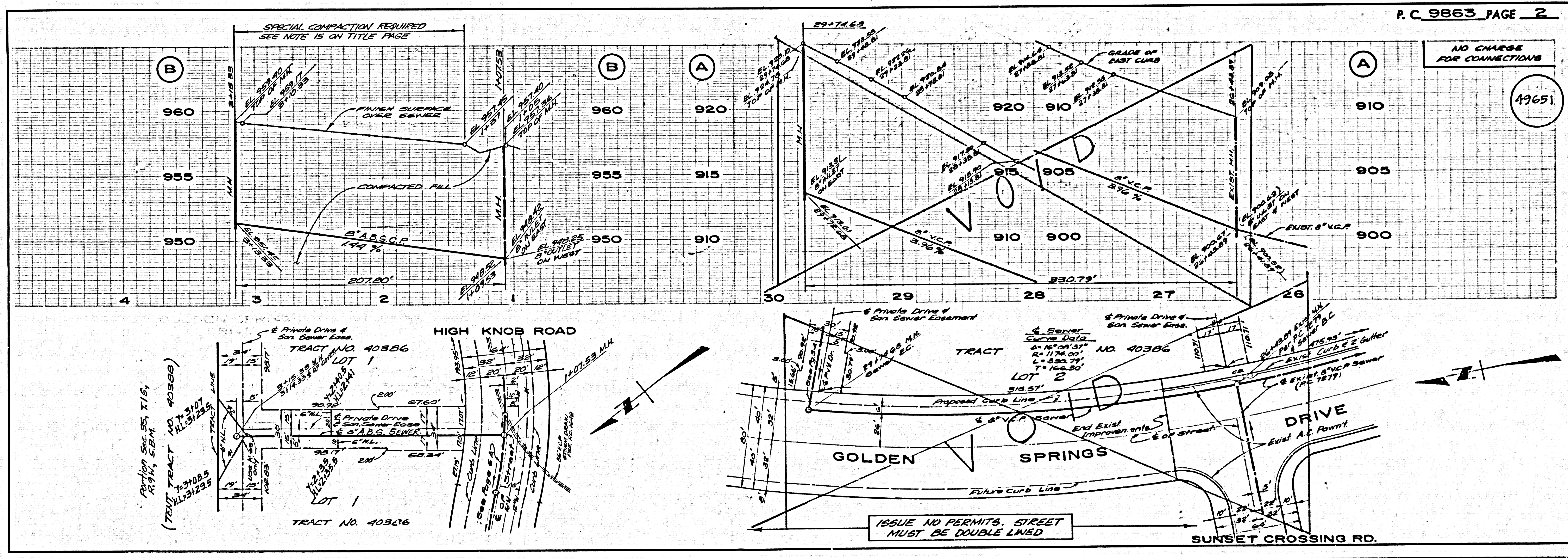
TO BE CONSTRUCTED IN  
TRACT NO. 40386  
PRIVATE CONTRACT NO. 9863

W.S. 39-D,2  
4 SHEETS, 8 PAGES  
SCALE: VERT. 1" = 4'  
HORIZ. 1" = 40'  
JULY, 1980  
PREPARED IN THE OFFICES OF  
PFELER & ASSOCIATES ENGINEERS  
1559 W. COMMONWEALTH AV., FULLERTON, CALIFORNIA 92633  
BY: *Ralph David Deist*  
REG. C.E. NO. 12507

THE FOLLOWING LATEST REVISED STANDARD PLANS ON FILE IN THE OFFICE OF THE COUNTY ENGINEER SHALL APPLY IN THE CONSTRUCTION OF THIS PROJECT:

SEWER	5-1
MINIMUM PUBLIC SAFETY REQUIREMENTS	5-2
BRICK MANHOLE	5-3
STANDARD MANHOLE SET	5-7
SHEDDING FOR SEWER PIPE	5-8
CELEBRATION AND ENCASUREMENT	5-20
WYE OR TEE SUPPORT	5-20
ALLOWABLE TRENCH WIDTHS	5-20
WOODEN MANHOLE FRAMES AND COVERS	5-26
NON-IMPREGATED PRECAST CONCRETE MANHOLES	5-26
ANCHOR BLOCK	5-26
SPECIAL MANHOLE LATERALS	5-26
EROSION PROTECTION IN STREET SLOPES	5-26

COUNTY OF LOS ANGELES, CALIFORNIA  
STEPHEN J. KOONCE, COUNTY ENGINEER WALTER E. GARRISON, CHIEF ENGINEER  
APPROVED *Sam M. Miller* 12/1/80  
SAN DIMAS REGIONAL ENGINEER DATE  
APPROVED *Sam M. Miller*  
OFFICE ENGINEER  
CHECKED *Ralph David Deist* 12/14/80  
DATE  
SHEET NO. 16333  
SAN DIMAS BLDG. DIST. 22.00

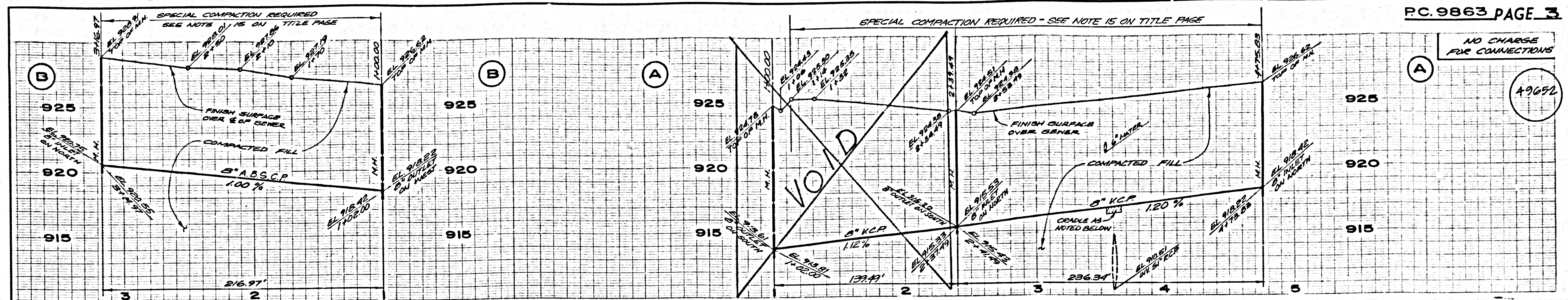


NO CHARGE  
FOR CONNECTIONS  
49651

ISSUE NO PERMITS. STREET  
MUST BE DOUBLE LINED

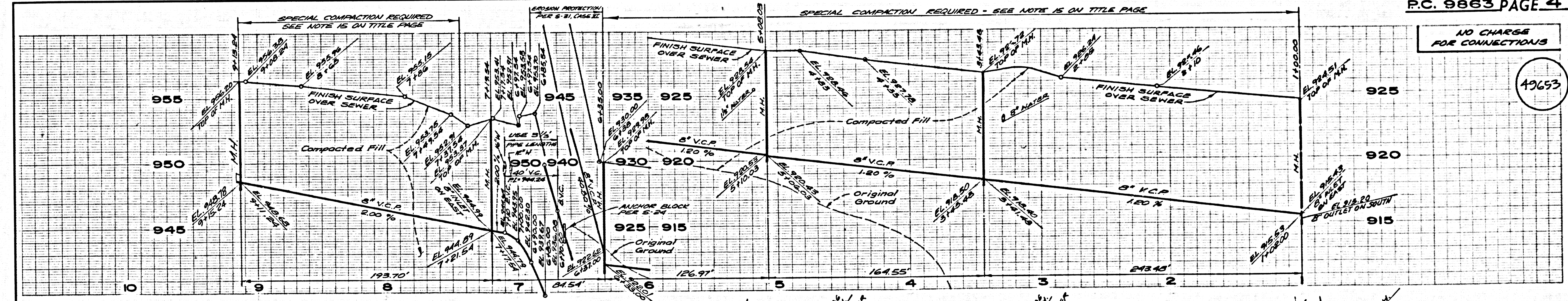
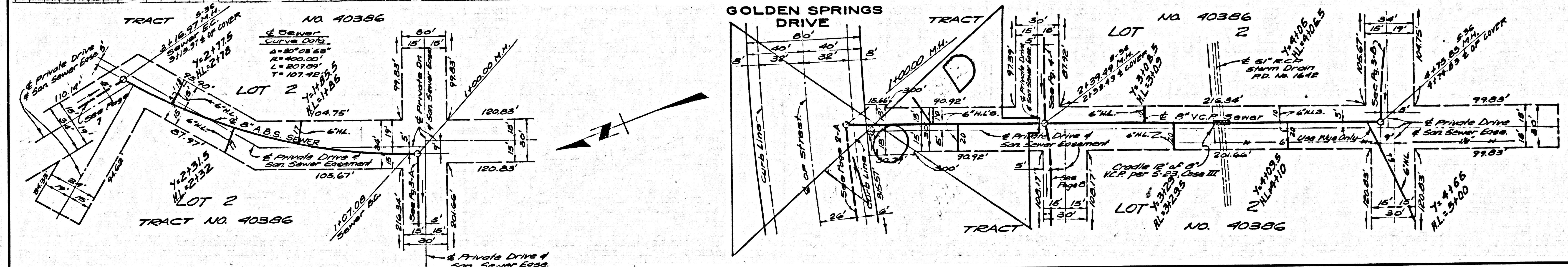
9863 BC

98504 ON TRACT



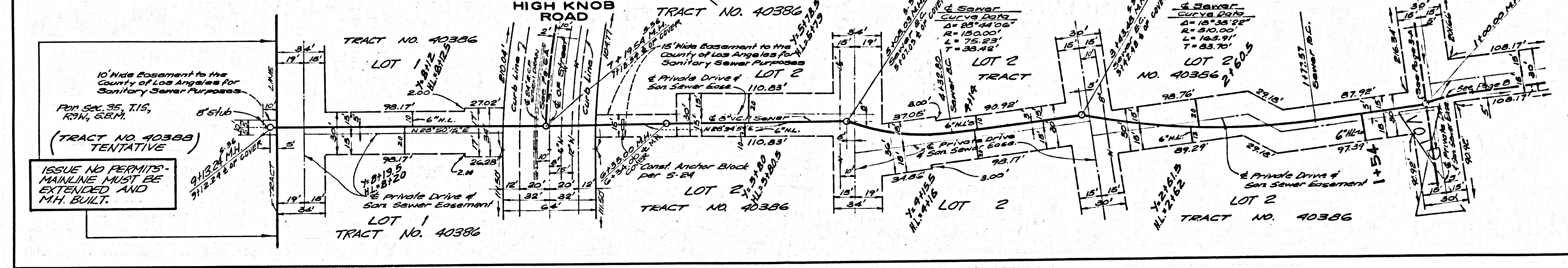
NO CHARGE FOR CONNECTIONS

49652



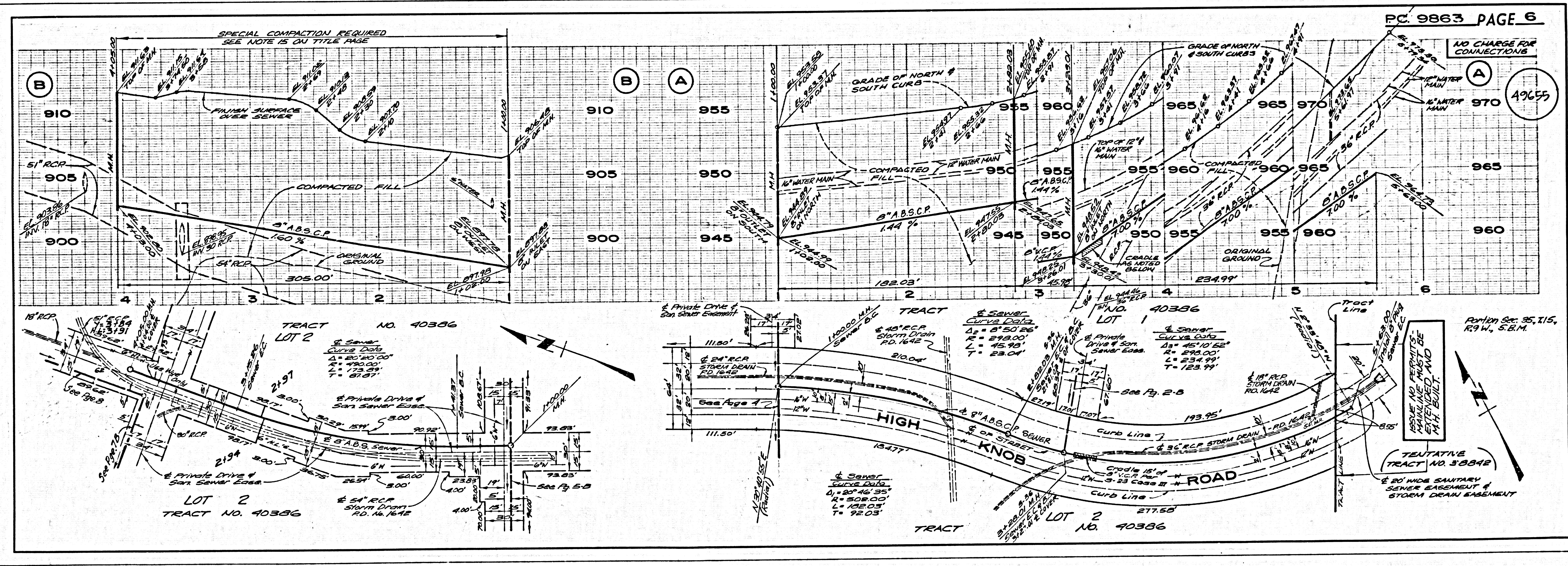
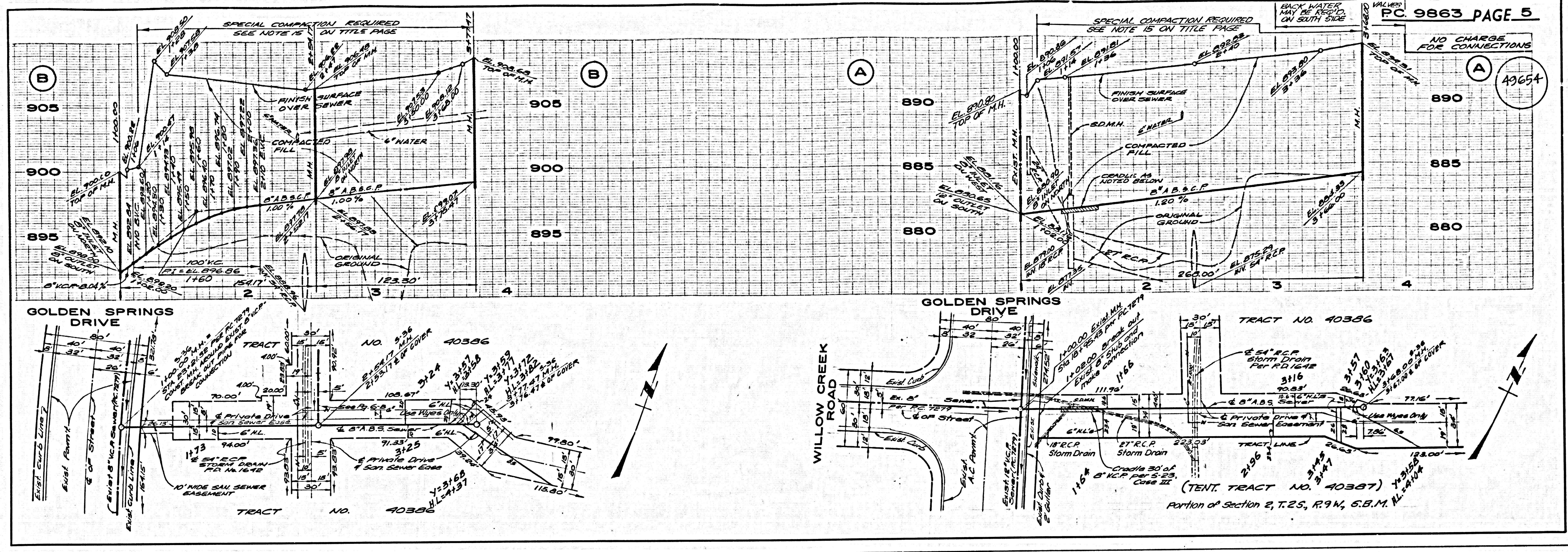
NO CHARGE FOR CONNECTIONS

49653



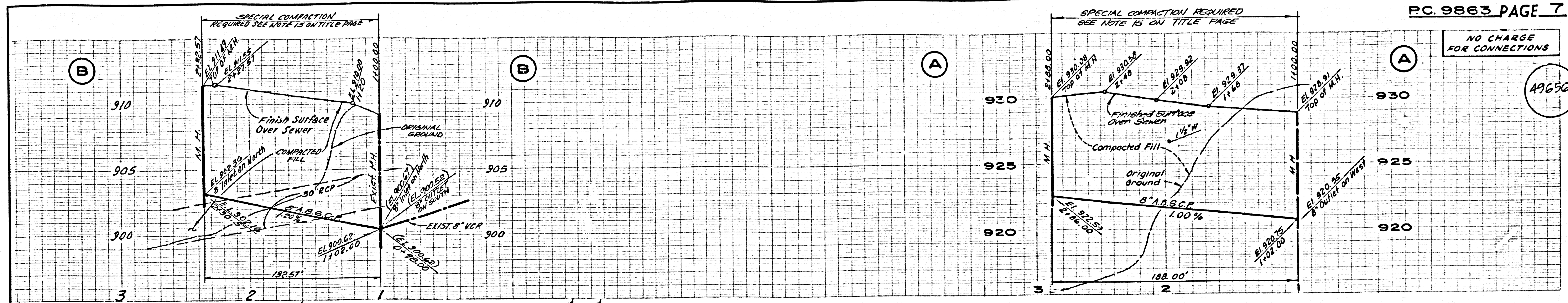
PC. 9863

TRACT NO. 40386



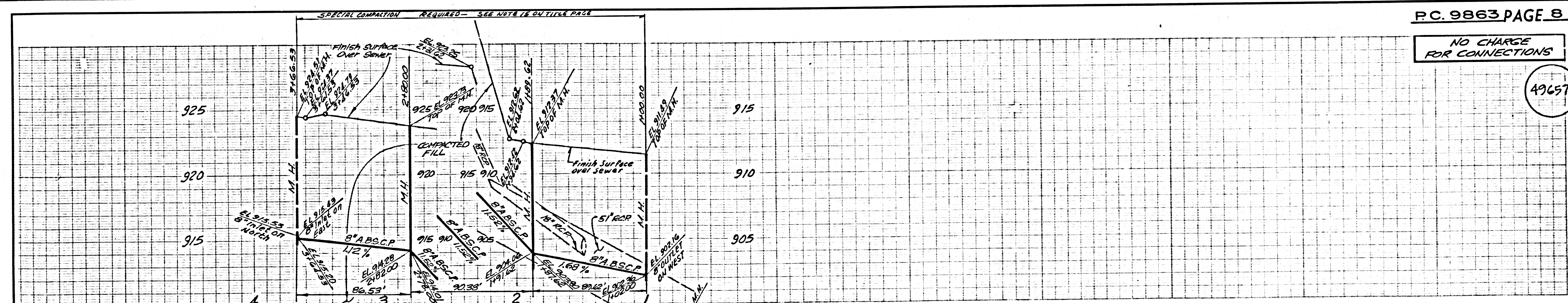
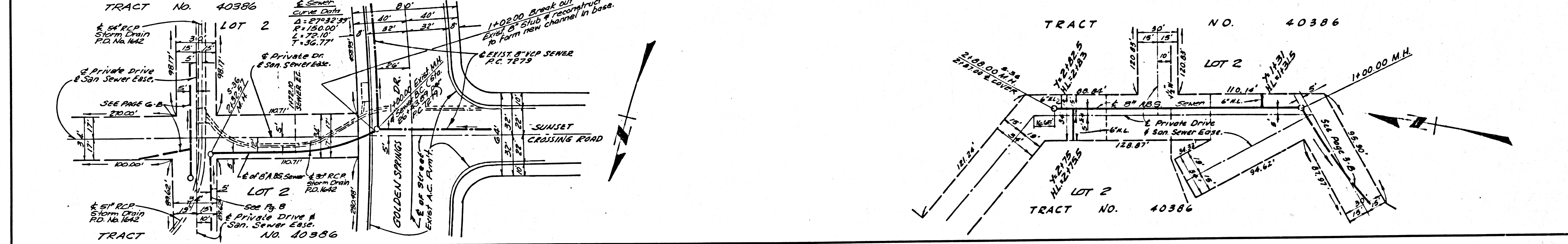
3880 09

38804 0M TART



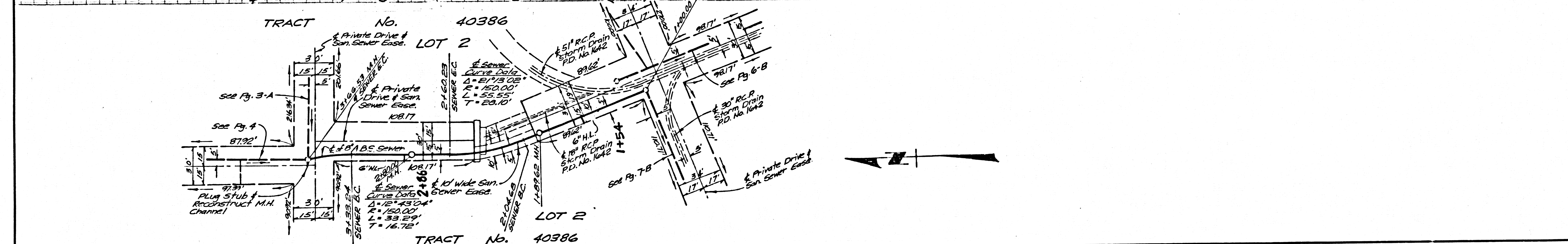
NO CHARGE FOR CONNECTIONS

49656



NO CHARGE FOR CONNECTIONS

49657



83803

83804 ON TRACT