

DOUBLE SCALE

B.M. \*CY 10024 ELEV. 978.500  
 50' E OF LAKE UNDER DR 40 FT  
 50' E 20 FT E/O C/L INT RIGGER RD  
 50' LAKE UNDER RD  
 MALIBU QUAD. 19 80

INDEX MAP  
 P.C. 9865, TRACT NO. 40259  
 SCALE 1"=100'

**GENERAL NOTES:**

1. ELEVATIONS ARE IN FEET ABOVE M.S.L. (U.S. SEA LEVEL DATUM OF 1929)
2. NO REVISIONS SHALL BE MADE IN THIS PLAN WITHOUT THE APPROVAL OF THE COUNTY ENGINEER.
3. NO REVISIONS SHALL BE MADE IN THIS PLAN WITHOUT THE APPROVAL OF THE COUNTY ENGINEER.
4. GRADES TO WHICH THIS IMPROVEMENT IS TO BE CONSTRUCTED ARE INDICATED BY NUMBERS AND LETTERS TO THE RIGHT OF THE CURB CENTER LINE. IN CASES WHERE THE CENTER LINE OF ALLEYS AND DRIVEWAYS IS NOT SHOWN, THE CENTER LINE OF THE DRIVEWAY SHALL BE USED AS THE CENTER LINE OF THE ALLEY.
5. THE PRIVATE ENGINEER SHALL FURNISH THE COUNTY ENGINEER WITH THE RATE SCHEDULE AND PARTICULARS FOR ALL SEWER LATERALS AND 12" OR 15" BRANCHES AND SHALL PROVIDE STAKES AT THE POINTS OF BEGINNING AND ENDING OF ALL SEWER LATERALS AND BRANCHES. ALL SEWER LATERALS SHALL BE CONSTRUCTED IN A TRENCH AT AN ANGLE FROM THE MAIN LINE TRUNK SEWER AS SHOWN ON THE PLAN. BRANCHES SHALL BE CONSTRUCTED WITH THE MAIN LINE TRUNK SEWER WITHIN THE MAIN LINE SEWER ANY CHANGE IN ALIGNMENT SHALL BE AS SHOWN ON THE PLAN.
6. THE PRIVATE ENGINEER SHALL FURNISH THE UTILITY LATERAL DATA AT THE POINTS OF BEGINNING AND ENDING OF ALL SEWER LATERALS FOR EACH HOUSE LATERAL ON THE GRADE SHEET.

**CONSTRUCTION NOTES:**

1. WORK SHALL BE CONSTRUCTED ACCORDING TO THE STANDARD SPECIFICATIONS FOR HIGHWAY AND BRIDGE CONSTRUCTION WITH THE STANDARD AND COUNTY ENGINEER SPECIFICATIONS FOR SEWER CONSTRUCTION AND THE STANDARD SPECIFICATIONS FOR SEWER CONSTRUCTION.
2. THE CONTRACTOR SHALL NOTIFY THE ENV. DEPT. WITHIN 48 HOURS BEFORE THE START OF ANY WORK.
3. HOUSE LATERALS TO BE CONSTRUCTED WITHIN THE MAIN LINE TRUNK SEWER SHALL BE CONSTRUCTED AS SHOWN ON THE PLAN.
4. WYE OR THE BRANCHES MAY BE USED FOR CONNECTIONS TO MAINLINE SEWER LATERALS.
5. ALL STRUCTURES SHALL BE PROTECTED AGAINST COLLAPSE BY THE CONTRACTOR.
6. ALL STRUCTURES SHALL BE PROTECTED AGAINST COLLAPSE BY THE CONTRACTOR.
7. MANHOLE TOPS IN UNIMPAVED AREAS SHALL BE 4" ABOVE FINISHED GRADE.
8. MANHOLE TOPS IN UNIMPAVED AREAS SHALL BE 4" ABOVE FINISHED GRADE.
9. A POWER POLE IS SHOWN CROSSING THE SEWER LINE. THE CONTRACTOR SHALL BE RESPONSIBLE FOR THE PROTECTION OF THE POWER POLE FROM THE POINT OF INTERFERENCE.
10. IN PLACING THE CURBS OF CONSTRUCTION, THE CONTRACTOR SHALL BE RESPONSIBLE FOR THE PROTECTION OF THE POWER POLE FROM THE POINT OF INTERFERENCE.
11. ALL JOINTS BETWEEN CAST IRON PIPE AND BRICK SHALL BE MADE WITH A RUBBER SLEEVE JOINT. THE JOINTS SHALL BE BORED IF NECESSARY PER STANDARD SPECIFICATIONS SECTION 201.8.
12. SEWERS TO BE TESTED FOR LEAKAGE PER SECTION 201.8 OF THE STANDARD SPECIFICATIONS AND SPECIAL PROVISIONS IN ACCORDANCE WITH PERMITS.
13. BRICKMASTERS SHALL BE RESPONSIBLE FOR THE PROTECTION OF ALL UTILITIES AND STRUCTURES WITHIN THE PROJECT AREA.
14. FULL COMPLIANCE WITH SECTION 201.8 OF THE STANDARD SPECIFICATIONS AND SPECIAL PROVISIONS SHALL BE MAINTAINED THROUGHOUT THE CONSTRUCTION AND TESTING PERIOD. ALL TESTS SHALL BE MADE IN THE PRESENCE OF THE COUNTY ENGINEER.
15. SPECIAL BACKFILL IN EASEMENT CONSTRUCTION: (A) BACKFILL TRENCH AND REPLACE OTHER EARTH SO AS TO REPRODUCE THE ORIGINAL CONDITION. (B) BACKFILL TRENCH AND REPLACE OTHER EARTH SO AS TO REPRODUCE THE ORIGINAL CONDITION. (C) BACKFILL TRENCH AND REPLACE OTHER EARTH SO AS TO REPRODUCE THE ORIGINAL CONDITION.

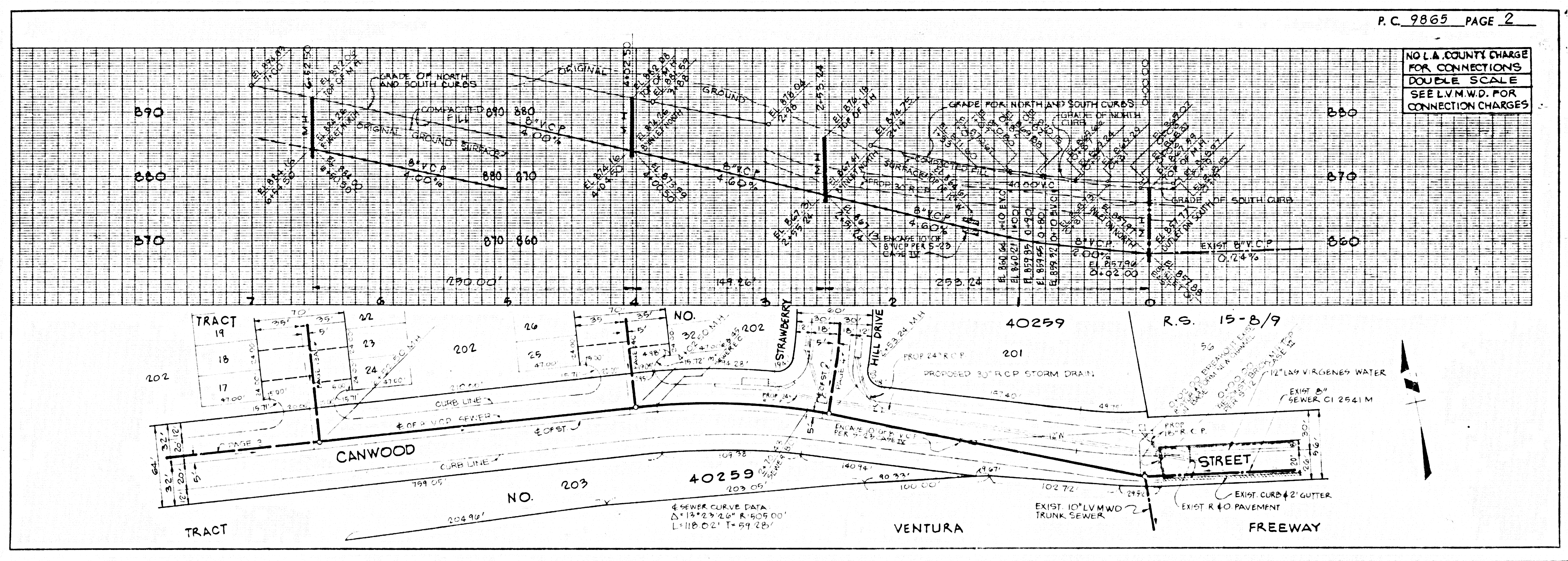
PROFILE, ALIGNMENT AND GRADE OF  
**SANITARY SEWERS** PAGE 1  
 TO BE CONSTRUCTED IN  
**TRACT NO. 40259**  
**PRIVATE CONTRACT NO. 9865**  
 INDEX 159-037  
 WS 93  
 8 SHEETS, 15 PAGES  
 SCALE 1"=10' APRIL 1980  
 PREPARED IN THE OFFICES OF  
 RICHARD S. ANGWIRE  
 2940 WESTWOOD BLVD. LOS ANGELES, CA 90064  
 (213) 439-6175  
 BY *Richard S. Angwire*  
 REG. C.E. NO. 9284

THE FOLLOWING LATEST REVISED STANDARD PLANS ON FILE IN THE OFFICE OF THE COUNTY ENGINEER SHALL APPLY IN THE CONSTRUCTION OF THIS PROJECT:

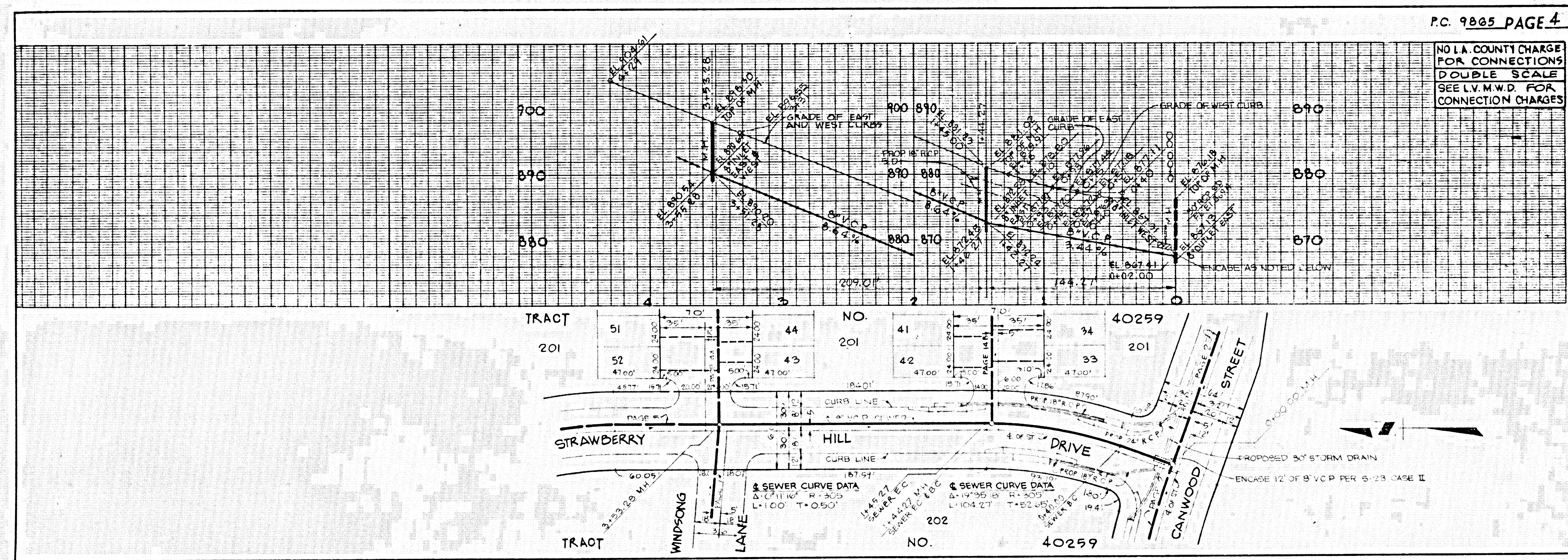
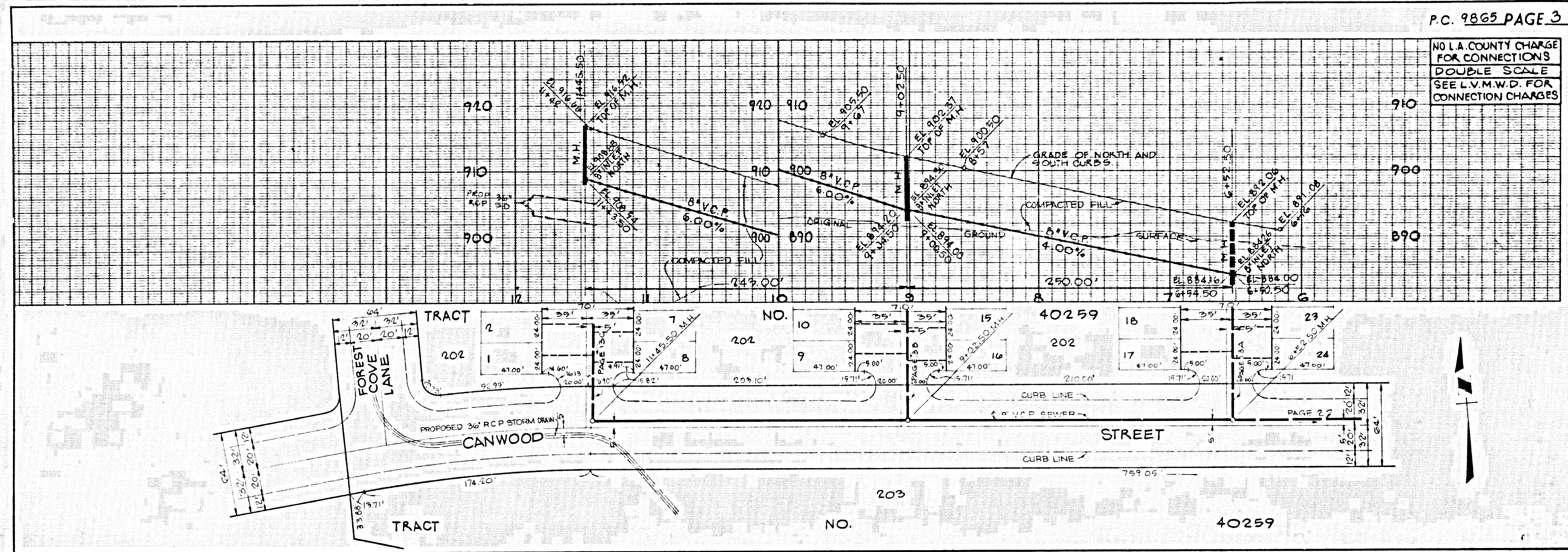
LEGEND	1-1
MINIMUM PUBLIC SAFETY REQUIREMENTS	1-2
BRICK MANHOLE	1-3
STANDARD MANHOLE STEP	1-4
BEDDING FOR SEWER PIPE	1-5
CRACKING AND ENCASING	1-6
WYE OF THE SEWER	1-7
ALLOWABLE TRENCH WIDTHS	1-8
LOCKING MANHOLE FRAME AND COVER	1-9
NON-REINFORCED PRECAST CONCRETE MANHOLE	1-10

COUNTY OF LOS ANGELES, CALIFORNIA  
 STEPHEN J. KOONCE COUNTY ENGINEER LAS VIRGENES MUNICIPAL WATER DISTRICT  
 APPROVED *Michael Murphy* 11/3/80 APPROVED *Richard S. Angwire*  
 CHECKED *Ralph D. Hunt* 12/2/80  
 REG. C.E. NO. 18993  
 CALABASAS BLDG. DIST. 9.1

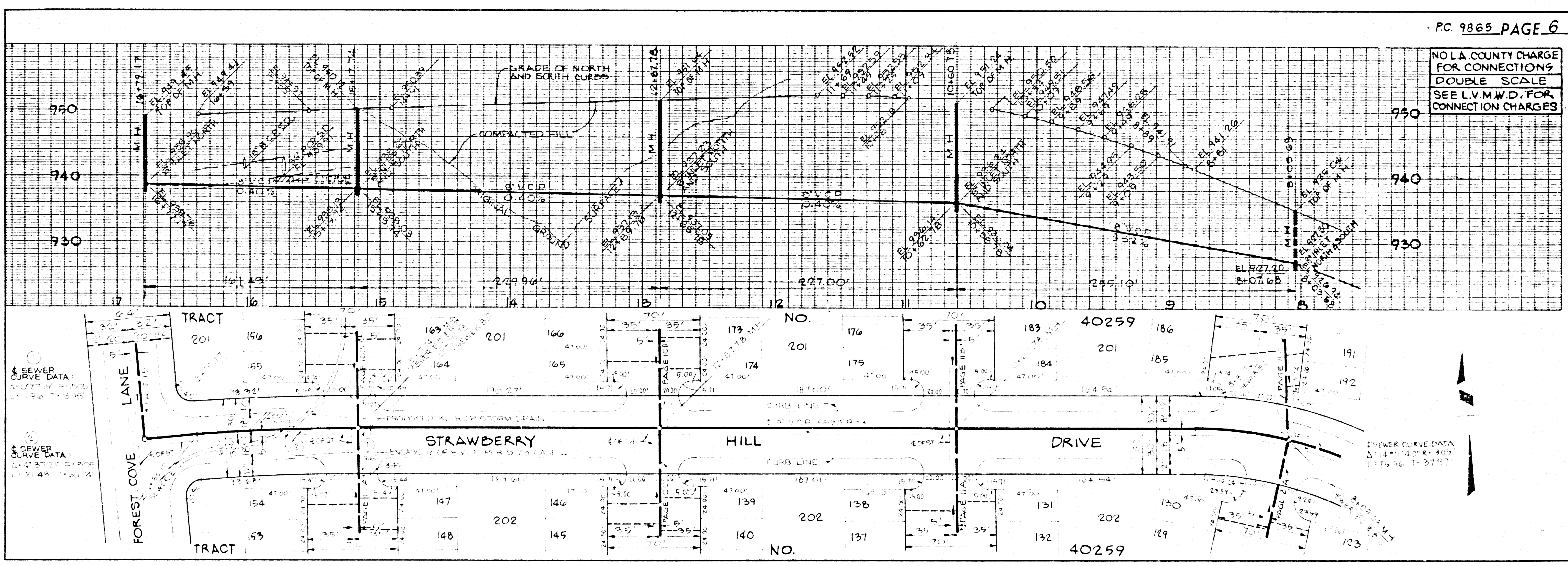
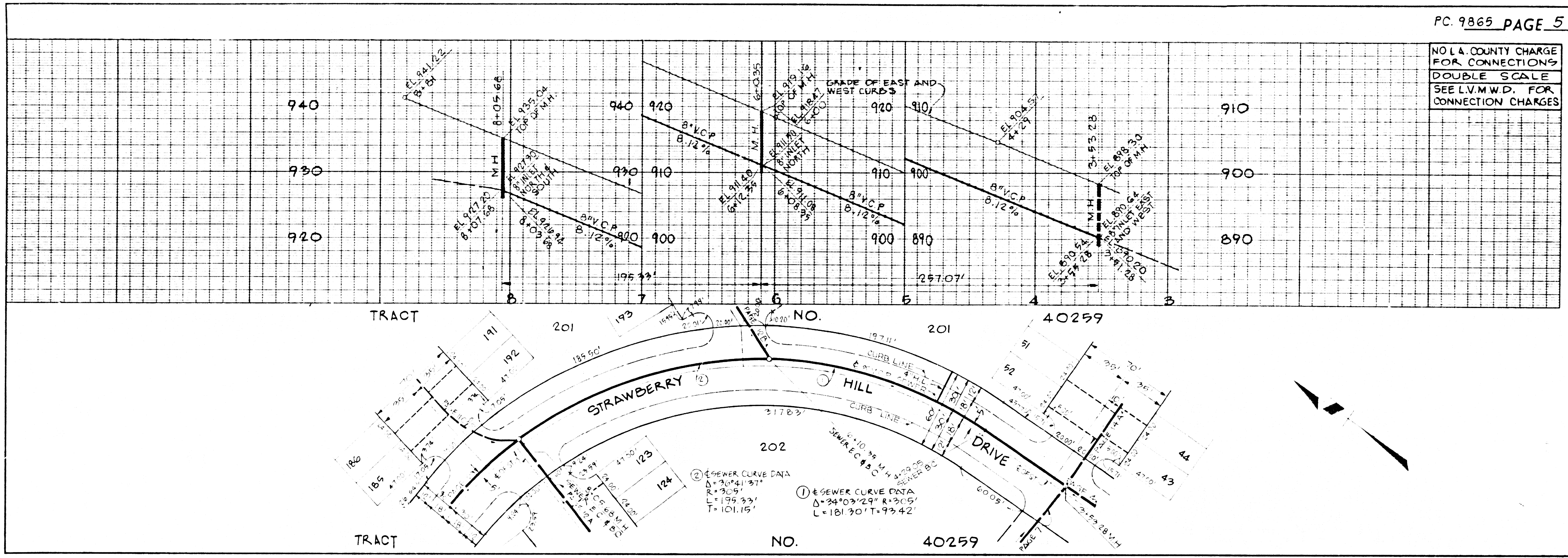
REVISION NO. 1 DATE: 5-10-81  
 RELOCATED 8" SEWER PAGE 14-B  
 TO S. SOUTHERLY OF E. OF PRIVATE  
 DRIVEWAY  
 APPROVED: *Paish Paul Simer* 5/10/81  
 OFFICE OF COUNTY ENGINEER







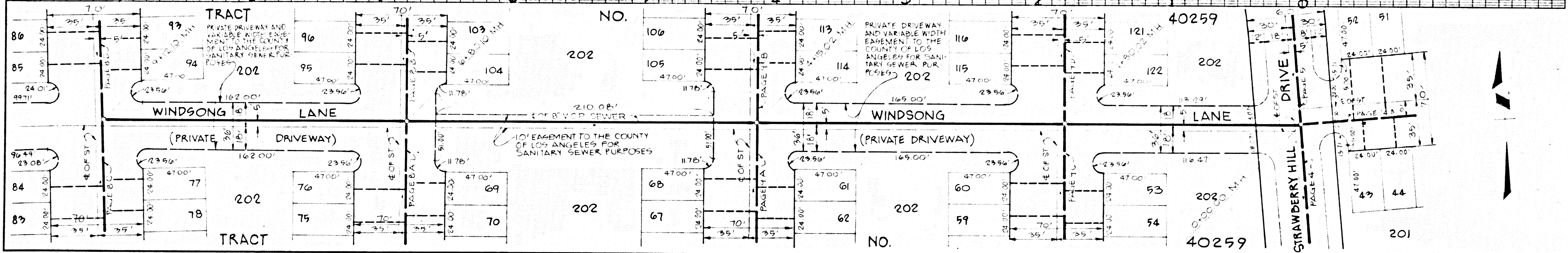
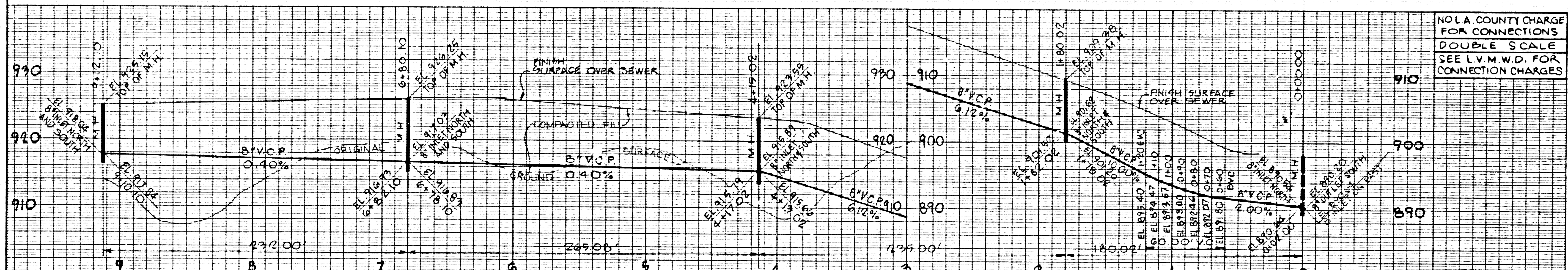




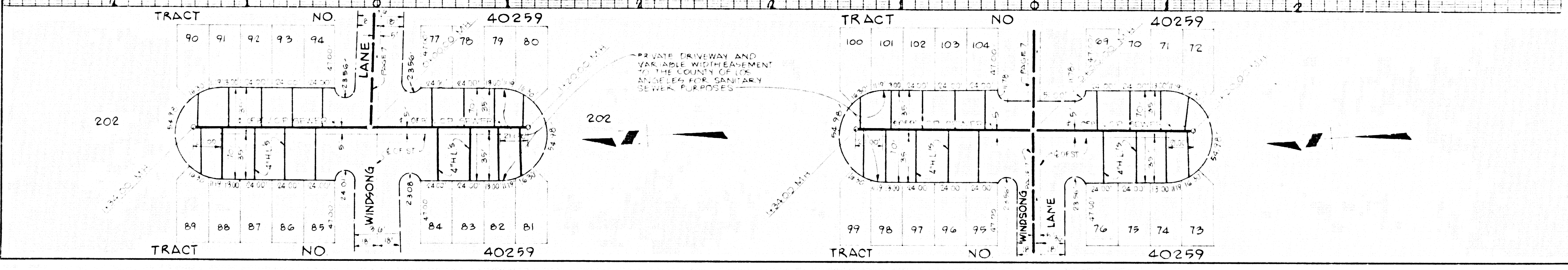
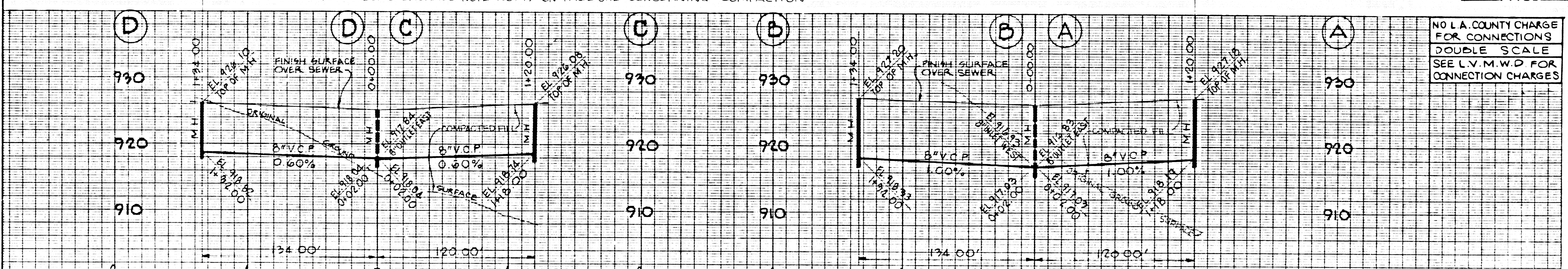
CSUP10A11



SEE SPECIAL BACKFILL NOTE NO. 15 ON PAGE ONE CONCERNING COMPACTION

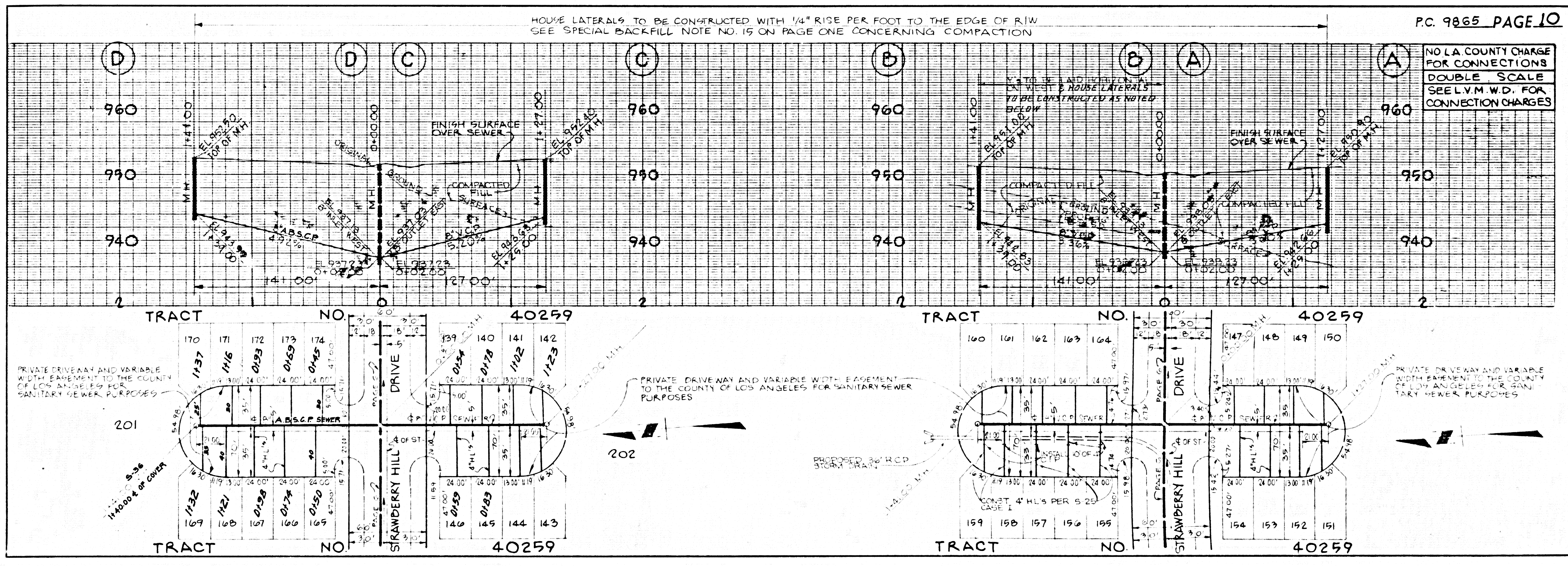
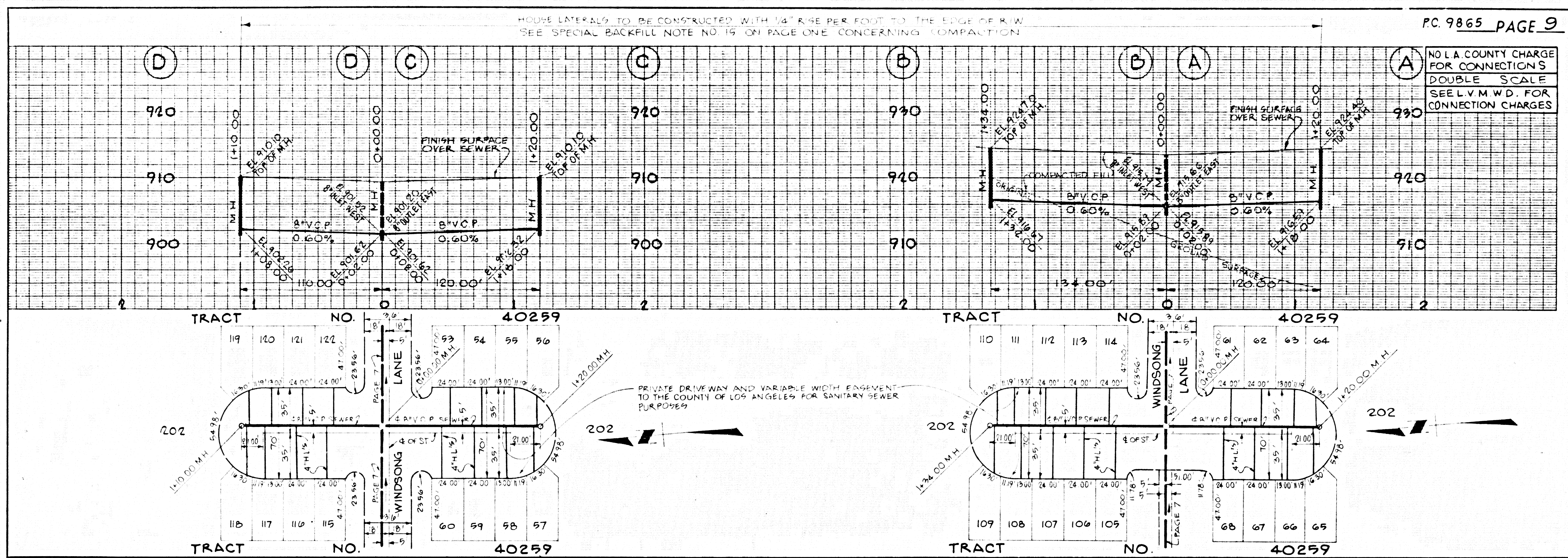


HOUSE LATERALS TO BE CONSTRUCTED WITH 1/4" RISE PER FOOT TO THE EDGE OF R.W. SEE SPECIAL BACKFILL NOTE NO. 15 ON PAGE ONE CONCERNING COMPACTION



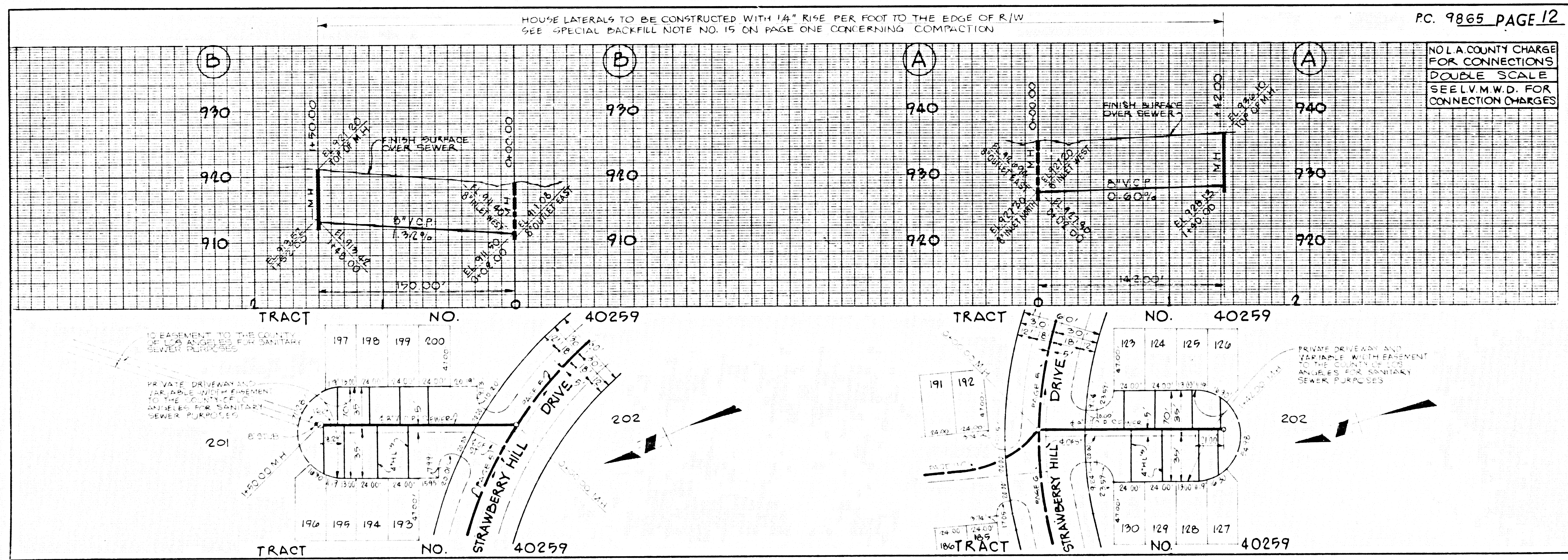
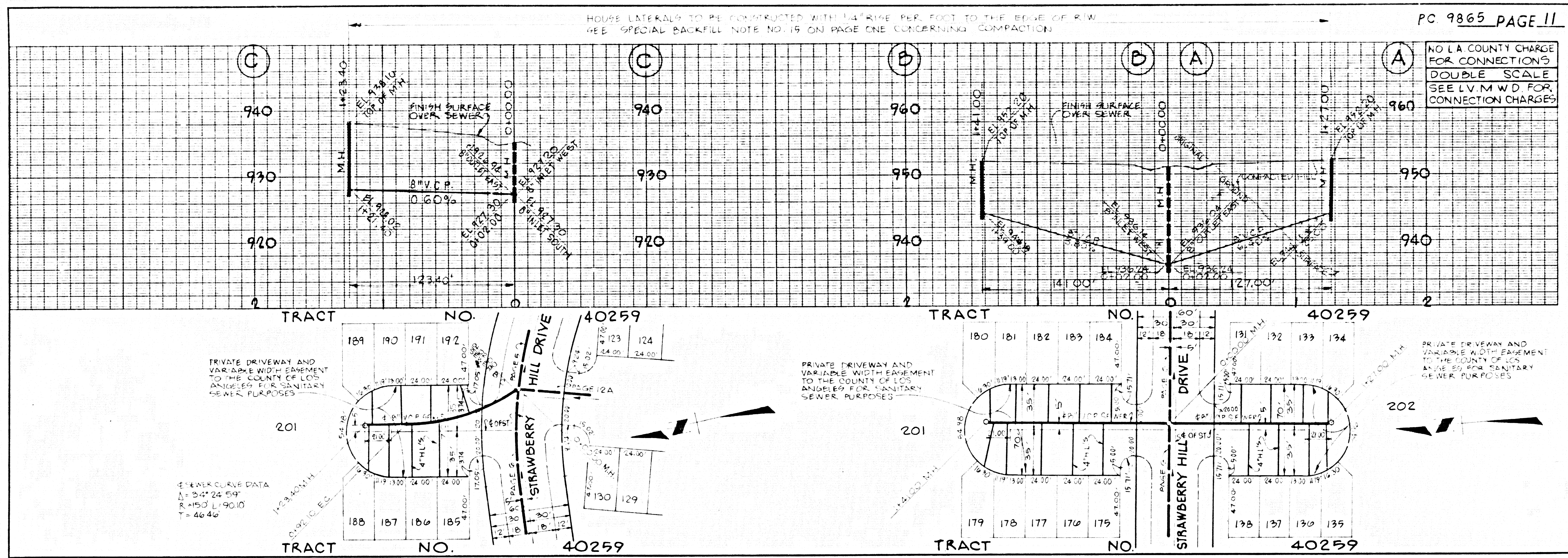
228 P.C. 98504 TRACT





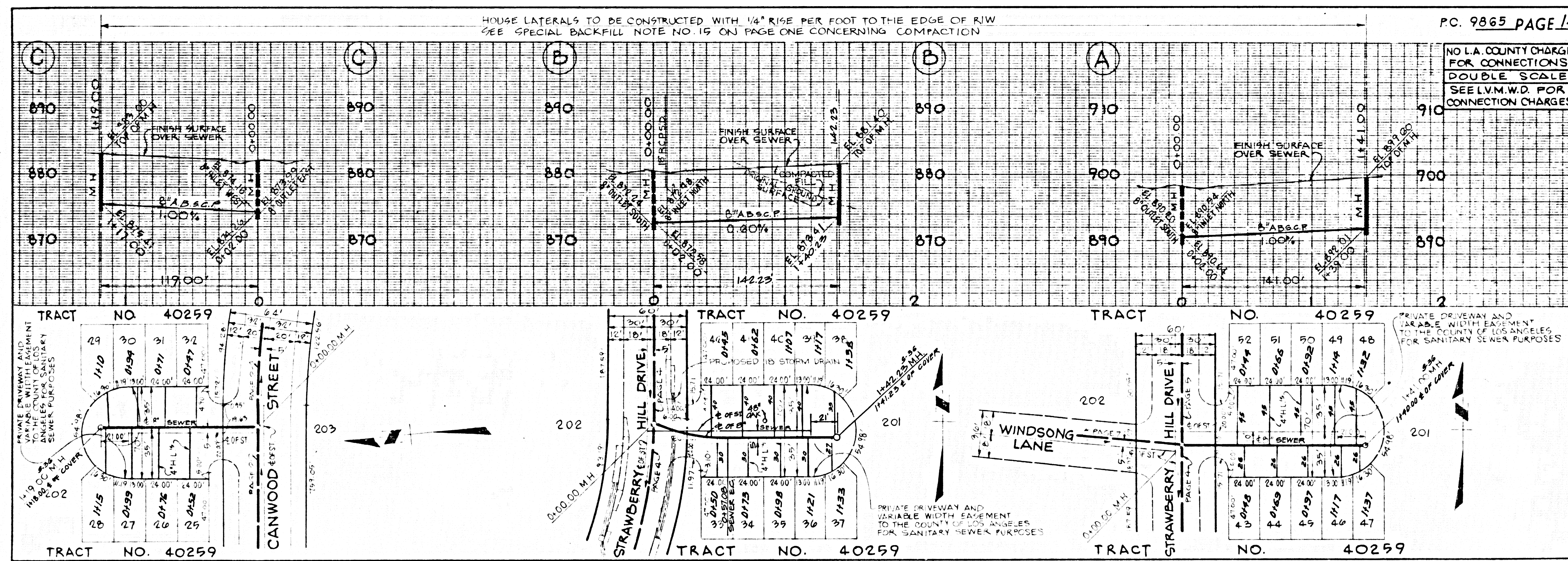
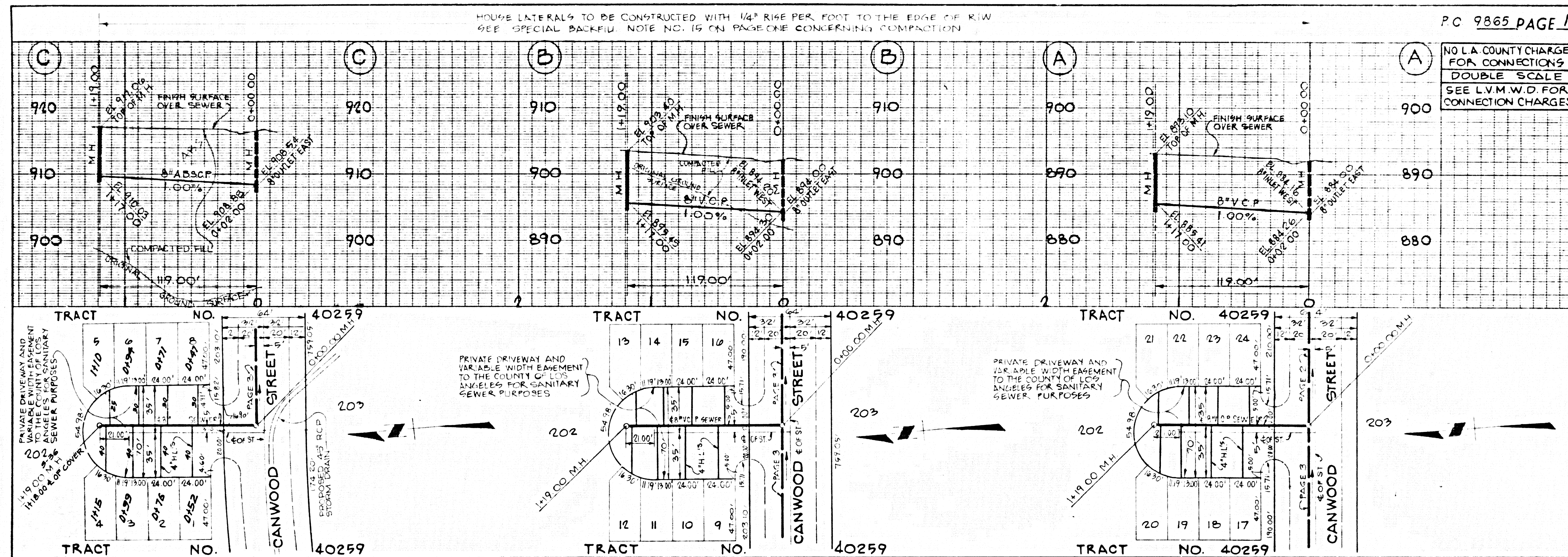
2 288 P. 09  
 2504 TRACT





© 1986 P. O. BOX 1000, CARLETON, CALIF. 92301  
 2504 TCAPI

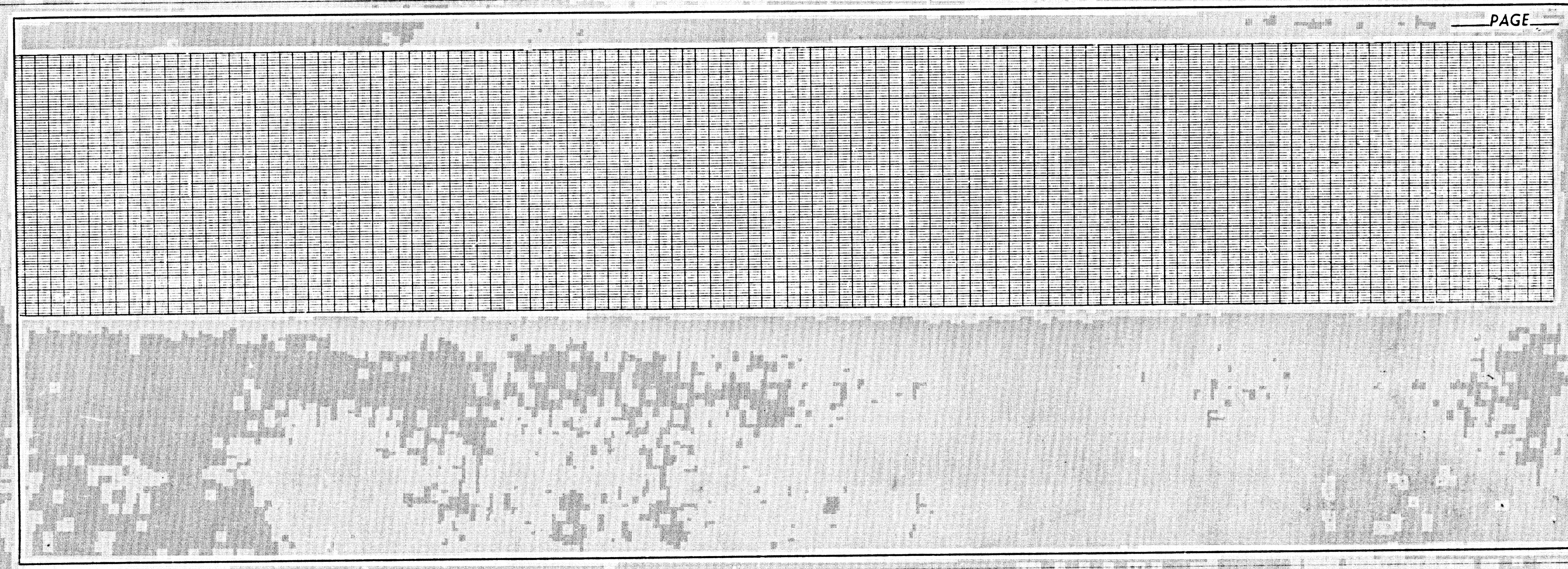
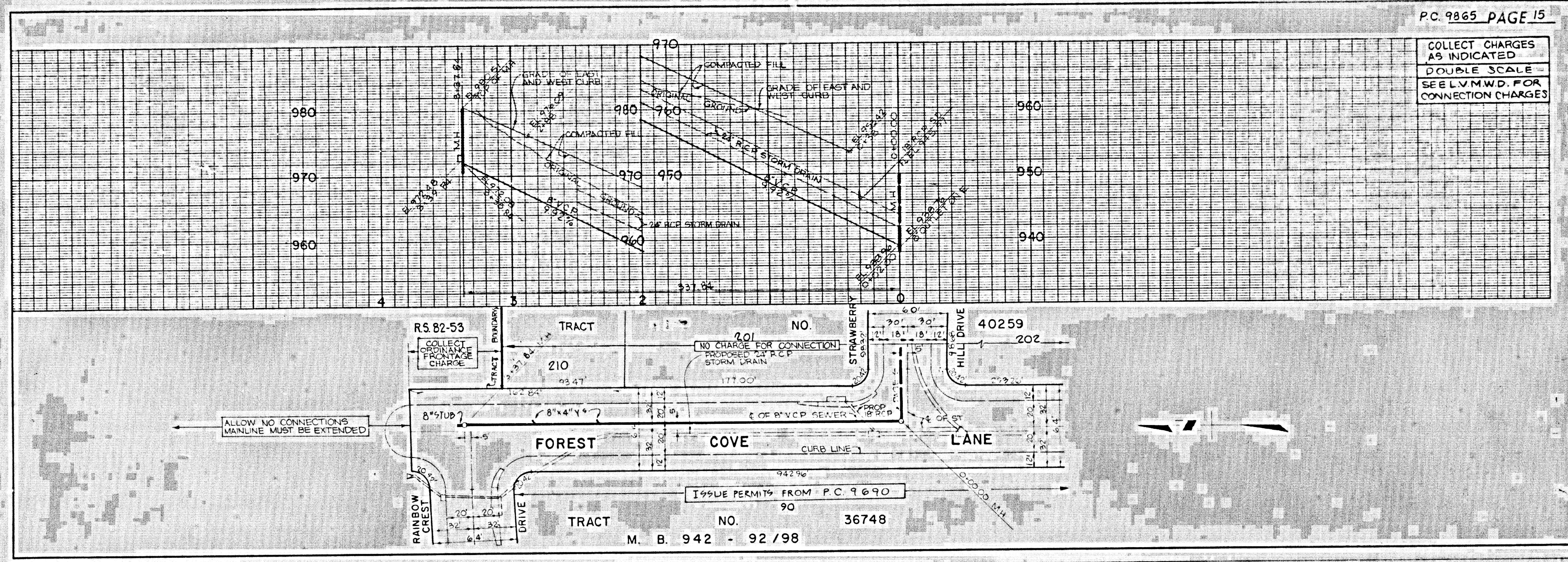




288P.09  
 2504 TRACT



COLLECT CHARGES AS INDICATED  
DOUBLE SCALE -  
SEE L.V.M.W.D. FOR CONNECTION CHARGES



Scale

PROVISIONAL  
REVISION DATA