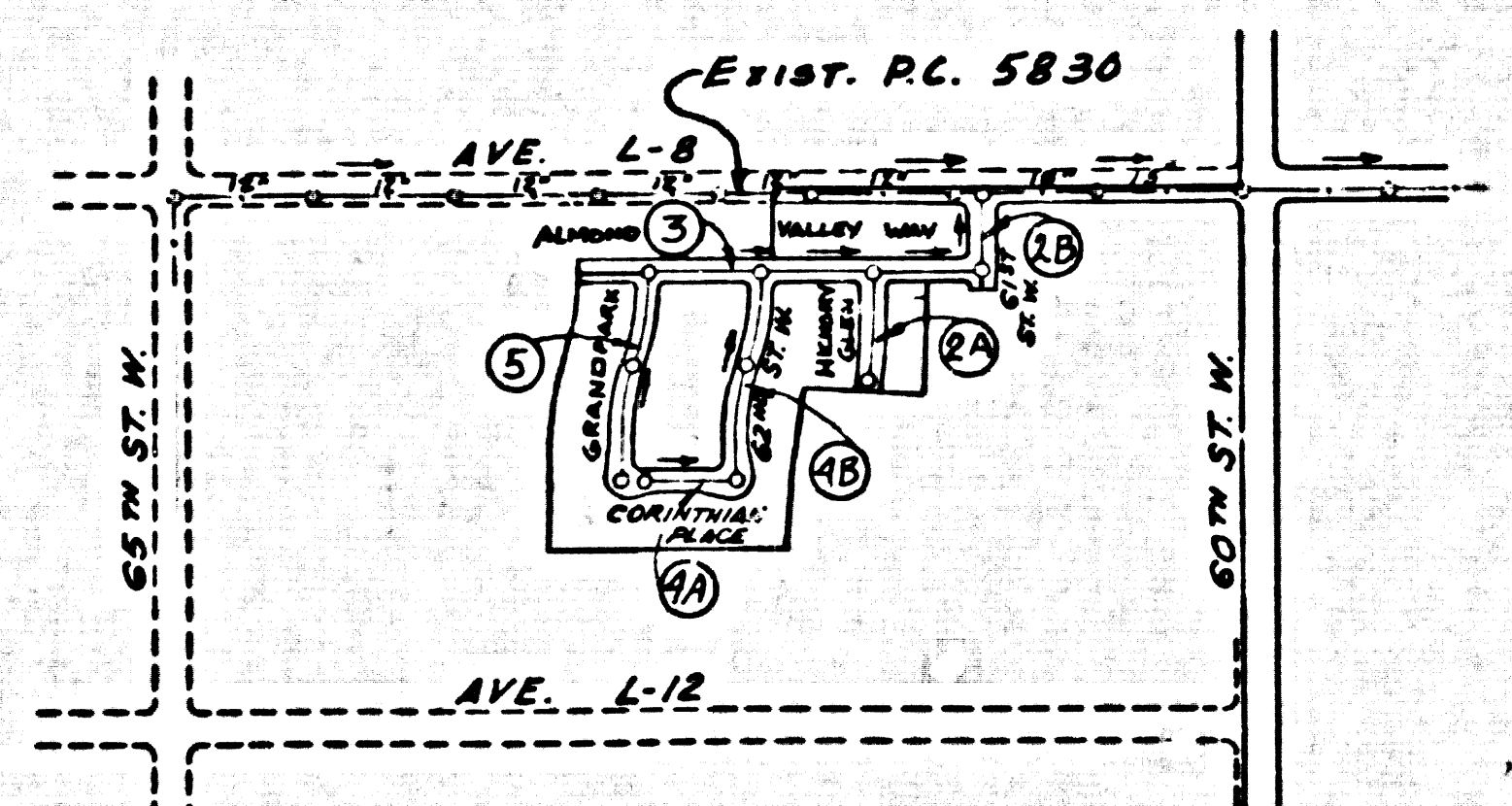


B.M. C.L. 397 ELEV. 2513.813  
 CS MON IN WELL 22 IN DN  
 @ C/L INT OF AVE M & 60TH  
 ST W MKD (SEC COR 34 35 3  
 2 77N 76N R13W)  
 BASELINE QUAD. 1973

REVISION NO. 1 SEPT. 6, 1983  
 ADD LATERALS: 4B STA. 1400N, 2430N, 3480N  
 4A STA. 600N, 7430N, 8400N  
 5 STA. 1400E, 2400E, 3400E  
 APPROVED: *Salvo G. Gallo* R.C.E. No. 33134  
 OFFICER OF COUNTY ENGINEER



INDEX MAP  
 P.C. 9869  
 TR. NO. 40526  
 SCALE: 1"=600'

NOTE:  
 NUMBERS IN CIRCLES INDICATE  
 PAGE NUMBERS

NO CONNECTION FOR THE DISPOSAL OF INDUSTRIAL WASTES  
 SHALL BE MADE TO SEWERS EXCEPT AS THESE SEWERAGE DISTRICTS  
 A PERMIT FOR INDUSTRIAL WASTEWATER DISCHARGE HAS BEEN  
 ISSUED BY THE SANITATION DISTRICTS FOR SAID CONNECTION.  
 BEFORE BEGINNING WORK OR CONSTRUCTION ON A COUNTY  
 SANITATION DISTRICT SEWER AND PRIOR TO FINAL  
 ACCEPTANCE OF THE PROJECT, SANITATION DISTRICT  
 INSPECTOR SHALL BE NOTIFIED BY PHONE 1-805-791-5027  
 SO THAT REQUIRED INSPECTION CAN BE MADE.

16. CONTRACTOR TO FOLLOW MANUFACTURER'S RECOMMENDATIONS AS TO INSTALLATION  
 OF PIPE JOINTS.  
 17. ALL LINES AND/OR LATERALS ARE TO BE LOCATED AT LEAST FIVE FEET  
 APART AND WHEN POSSIBLE NOT CLOSER THAN FIVE FEET TO ANY MANHOLE  
 18. THE DEVELOPER/CONTRACTOR SHALL NOTIFY THE LOS ANGELES COUNTY SEWER  
 MAINTENANCE DISTRICT AT (213) 799-2326 THREE WORKING DAYS PRIOR TO  
 JOINING PROPOSED SANITARY LINE TO EXISTING 12" TRUNK SEWER.

GENERAL NOTES:

- ELEVATIONS ARE IN FEET ABOVE U.S.C. & G.S. SEA LEVEL DATUM OF 1929.
- NO REVISIONS SHALL BE MADE IN THESE PLANS WITHOUT THE APPROVAL OF THE COUNTY ENGINEER.
- NO REPRESENTATIVE OF THE COUNTY ENGINEER WILL SURVEY OR LAY OUT ANY PORTION OF THE WORK.
- GRADES TO WHICH THIS PLAN COMPLIES TO BE CONSTRUCTED ARE SHOWN ON PLANS AND PROFILE GRADE POINTS FOR TOP OF CURBS, CENTER LINE OF STREETS, OR CENTER LINE OF ALLEYS ARE SHOWN BY CIRCLES ON PLAN. AT ALL POINTS BETWEEN DESIGNATED POINTS THE GRADE SHALL BE ESTABLISHED SO AS TO CONFORM TO A STRAIGHT LINE DRAWN BETWEEN SAID DESIGNATED POINTS.
- THE PRIVATE ENGINEER SHALL FURNISH THE COUNTY ENGINEER WITH GRADE SHEETS AND STATIONING FOR ALL HOUSE LATERALS AND "C" OR "T" BRANCHES AND SHALL PROVIDE STAKES FOR THEM AT THEIR PROPER SPACINGS WITH STATIONING PLAINLY MARKED. ALL HOUSE LATERALS SHALL BE CONSTRUCTED IN A STRAIGHT ALIGNMENT AT RIGHT ANGLES FROM THE MAIN LINE SEWER EXCEPT AS SHOWN ON THE PLANS. HOUSE LATERALS FROM CHIMNEYS SHALL NOT HAVE AN ANGLE OF LESS THAN 45° WITH THE MAIN LINE SEWER. ANY CHANGE IN ALIGNMENT SHALL BE REQUESTED BY THE PRIVATE ENGINEER.
- THE PRIVATE ENGINEER SHALL FURNISH THE HOUSE LATERAL DEPTH AT THE PROPERTY LINE BELOW THE TOP OF CURB ELEVATION FOR EACH HOUSE LATERAL ON THE GRADE SHEET.
- BEFORE WORK CAN BE STARTED, THE CONTRACTOR MUST OBTAIN A PERMIT TO EXCAVATE IN COUNTY STREETS FROM THE L.A. COUNTY ROAD DEPT., DISTRICT OFFICE "G" 5, AND PAY A FEE TO THE COUNTY ENGINEER 249 E. WASHINGTON ST., LOS ANGELES, CALIF. TO COVER THE COST OF CONSTRUCTION INSPECTION AND RECORD PLANS.
- IF WORK IS TO BE DONE ON A STATE HIGHWAY, A PERMIT MUST BE OBTAINED FROM THE STATE OF CALIFORNIA, DIVISION OF HIGHWAYS 120 SOUTH SPRING STREET, LOS ANGELES, CALIFORNIA.
- APPROVAL OF THIS PLAN BY THE COUNTY OF LOS ANGELES DOES NOT CONSTITUTE A REPRESENTATION AS TO THE ACCURACY OF THE LOCATION OF OR THE EXISTENCE OR NON-EXISTENCE OF ANY UNDERGROUND UTILITY PIPE, OR STRUCTURE WITHIN THE LIMITS OF THIS PROJECT. THIS NOTE APPLIES TO ALL PAGES.
- REFER TO SECTION 118.61 OF THE STANDARD SPECIFICATIONS, REGARDING SAFETY ORDERS.
- PRIOR TO THE ISSUANCE OF THE REQUIRED SEWER CONSTRUCTION PERMIT, THE CONTRACTOR SHALL OBTAIN AND FILE WITH THE COUNTY ENGINEER COPIES OF A PERMIT TO EXCAVATE IN COUNTY STREETS FROM THE LOS ANGELES COUNTY ROAD DEPARTMENT, A PERMIT FOR EXCAVATIONS AND TRENCHES FROM THE STATE OF CALIFORNIA, DIVISION OF INDUSTRIAL SAFETY, AND A CERTIFICATE OF WORKMAN'S COMPENSATION INSURANCE WITH THE DEPARTMENT OF COUNTY ENGINEER, 550 S. VERMONT AVE., LOS ANGELES, CA, 90020, ROOM 404, ISSUED AS THE CERTIFICATE HOLDER TO BE NOTIFIED 30 DAYS PRIOR TO THE CANCELLATION OF THE POLICY.

CONSTRUCTION NOTES:

- WORK SHALL BE CONSTRUCTED ACCORDING TO THE STANDARD SPECIFICATIONS FOR PUBLIC WORKS CONSTRUCTION (1982 EDITION) WITH THE COMMENTS AND COUNTY ENGINEER SPECIAL PROVISIONS FOR THE CONSTRUCTION OF SANITARY SEWERS DATED SEPT. 21, 1976 AND SHALL BE PROSECUTED ONLY IN THE PRESENCE OF THE COUNTY ENGINEER.
- THE CONTRACTOR SHALL NOTIFY THE SANIT. DIST. DIVISION BY TELEPHONE, (213) 799-2326, AT LEAST TWENTY-FOUR HOURS BEFORE STARTING ANY WORK UNDER THIS CONTRACT.
- HOUSE LATERALS TO BE CONSTRUCTED WITH BRICKS AT PROPERTY LINE & FIVE FEET BELOW CURB GRADE EXCEPT AS NOTED.
- "C" OR "T" BRANCHES MAY BE USED FOR CONNECTIONS TO MAINLINE SEWERS EXCEPT AS NOTED.
- ALL STRUCTURES SHALL BE EITHER BRICK MANHOLES PER 5-4 ON PRECAST CONCRETE MANHOLES PER 5-26, EXCEPT AS NOTED.
- PROVIDE STAKES ON THE PROPERTY LINE OR PROPERTY LINES PRODUCED AT RIGHT ANGLES TO THE SEWER LINE AT THE CENTER LINE OF EACH MANHOLE.
- MANHOLE TOPS IN UNIMPROVED RIGHTS OF WAY TO BE SIX INCHES ABOVE FINISHED GRADE.
- VERTICAL CLAY PIPE JOINTS SHALL BE TYPE "B", OR "C" PER STANDARD SPECIFICATIONS SECTION 206-2.
- IF A POWER POLE IS WITHIN THREE FEET OF THE SEWER, THE SEWER SHALL BE ENCASED, PER 5-25, CASE II, TWO FEET ON EACH SIDE FROM THE POINT OF INTERFERENCE.
- IF DURING THE COURSE OF CONSTRUCTION IT IS DETERMINED THAT THERE IS LESS THAN FOUR FEET OF COVER OVER THE TOP OF A MAIN LINE OR HOUSE LATERAL V.C.P. SEWER WHICH IS NOT INDICATED ON THE PLANS, THE PIPE SHALL BE ENCASED PER 5-25, CASE II UNLESS OTHERWISE APPROVED BY THE COUNTY ENGINEER.
- ALL JOINTS BETWEEN CAST IRON PIPE AND VITRIFIED CLAY PIPE SHALL BE MADE WITH A RUBBER SLEEVE JOINT, TYPE "C" OR "B", WITH BURNING IF NECESSARY PER STANDARD SPECIFICATIONS, SECTION 206-5.
- SEWERS TO BE TESTED FOR LEAKAGE PER SECTION 206-4.6 OF THE STANDARD SPECIFICATIONS AND SPECIAL PROVISIONS.
- REINFORCE ALL TRENCHES WITH 12" X 12" BRICKS TO MEET L.A. COUNTY ROAD DEPT. OR CALIFORNIA STATE HIGHWAY REQUIREMENTS IN ACCORDANCE WITH PERMITS.
- FULL COMPLIANCE WITH SECTION 206-1.88 OF THE SPECIAL PROVISIONS WILL BE REQUIRED FOR RACEFILL IN STREETS. CERTIFICATION OF RACEFILL CONSTRUCTION AND SAND REQUIREMENTS BY A QUALIFIED REGISTERED TESTING LABORATORY SHALL BE PROVIDED BY THE PERMITTEE PRIOR TO THE ISSUANCE OF A CERTIFICATE OF PARTIAL ACCEPTANCE.
- SPECIAL BACKFILL IN BASEMENT CONSTRUCTION: (a) BACKFILL THROUGH AND PROTECT OTHER WORK IN AS TO ACHIEVE THE RETURN OF SURFACE GRADES AND SANDS SHOWN IN THE GRADING PLAN APPROVED BY THE BUILDING AND SAFETY DIVISION. (b) ALL BACKFILL AND SANDS BACKFILL SHALL BE CONSTRUCTED TO A MINIMUM OF 90% OF MAXIMUM DENSITY PER A.S.T.M. METHOD OR TEST METHOD AS NOTED PER ACCEPTABLE CERTIFICATION OF SUCH CONTRACTORS SHALL BE SUBMITTED TO THE ENVIRONMENTAL DEVELOPMENT DIVISION.

TO BE CONSTRUCTED IN  
 TRACT NO. 40526

PRIVATE CONTRACT NO. 9869

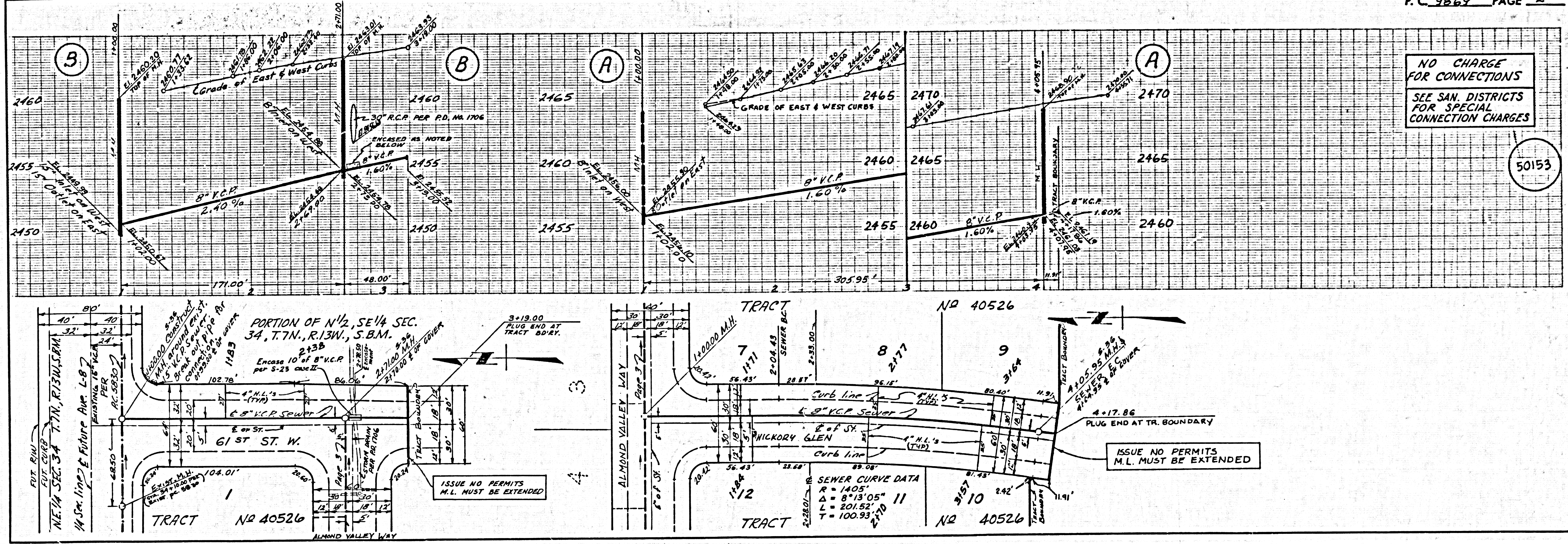
W.S. 71  
 3 SHEETS, 5 PAGES  
 SCALE: VERT. 1"=4'  
 HORIZ. 1"=40'  
 MAY, 1980  
 PREPARED IN THE OFFICES OF  
**ANTELOPE VALLEY ENGINEERING, INC.**  
 129 W. POMONA ST. LANCASTER, CA. 93534  
 TEL. No. (805) 299-0055  
 BY: *Charles J. Beck*  
 REG. C.E. No. 13289

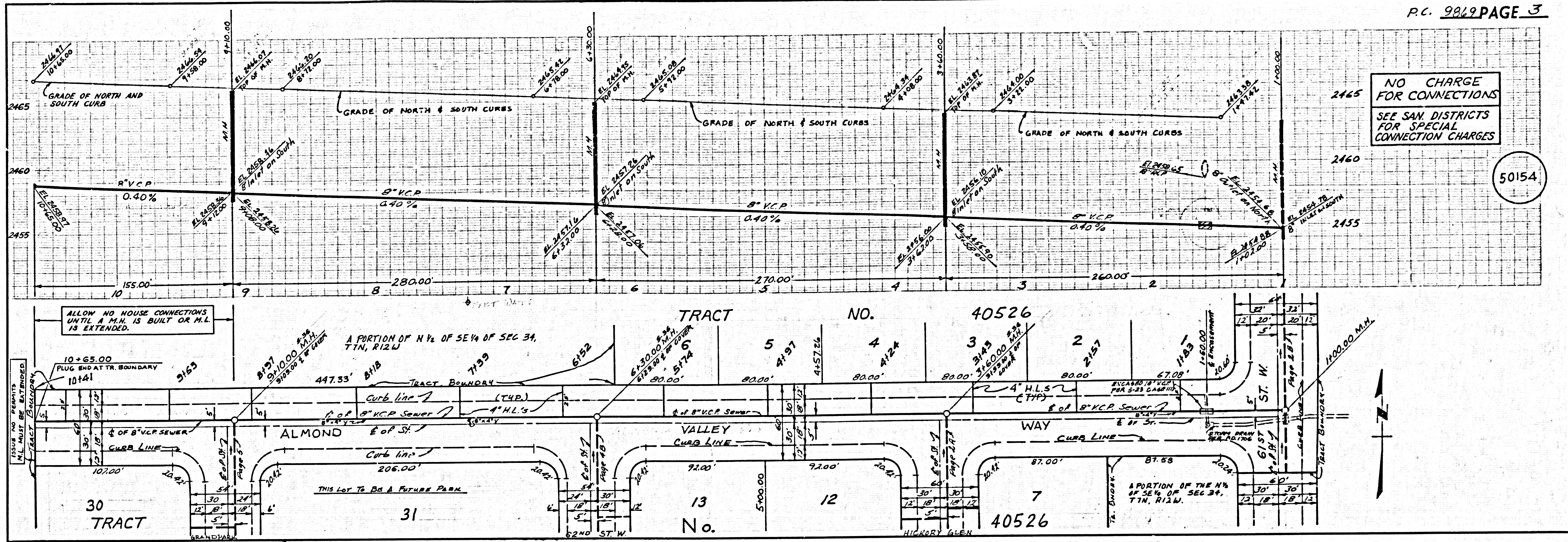
50152

THE FOLLOWING LATEST REVISED STANDARD PLANS ON FILE IN THE OFFICE OF THE COUNTY ENGINEER SHALL APPLY IN THE CONSTRUCTION OF THIS PROJECT:

LOGS	5-1
MINIMUM PUBLIC SAFETY REQUIREMENTS	5-2
BRICK MANHOLE	5-3
STANDARD MANHOLE STEP	5-7
WORKING FOR SEWER PIPE	5-8
GRADING AND BASECOURSE	5-20
WYE ON THE SUPPORT	5-26
ALLOWABLE TRENCH WIDTHS	5-28
LOCKER, MANHOLE PLATE AND COVER	5-36
NON-REINFORCED PRECAST CONCRETE MANHOLE	5-38

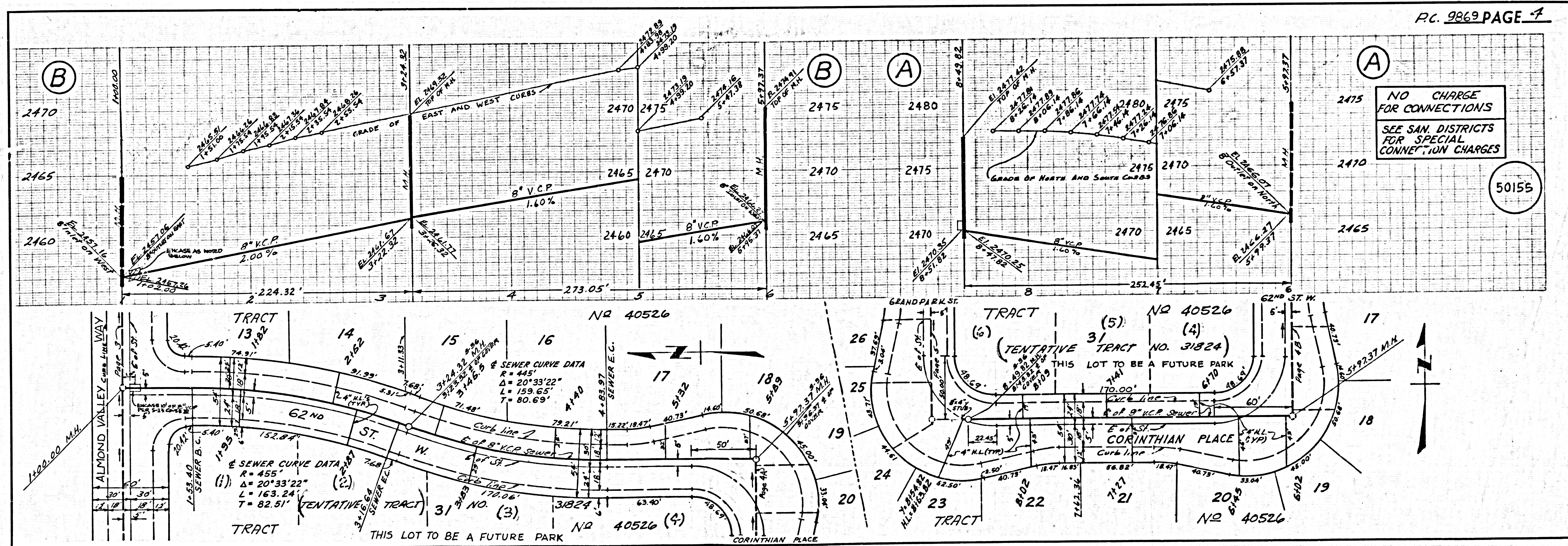
COUNTY OF LOS ANGELES, CALIFORNIA  
 STEPHEN J. KOONCE, COUNTY ENGINEER  
 WALTER E. GARTMAN, CHIEF ENGINEER  
 CO. SAN DIST. NO. 14  
 APPROVED: *Martin L. Murphy* 5-29-83  
 APPROVED: *Salvo G. Gallo* 5/29/83  
 CHECKED: *Salvo G. Gallo* 5/29/83  
 REG. C.E. NO. 33134  
 LANCASTER BLDG. DIST. B





NO CHARGE FOR CONNECTIONS  
SEE SAN DISTRICTS FOR SPECIAL CONNECTION CHARGES

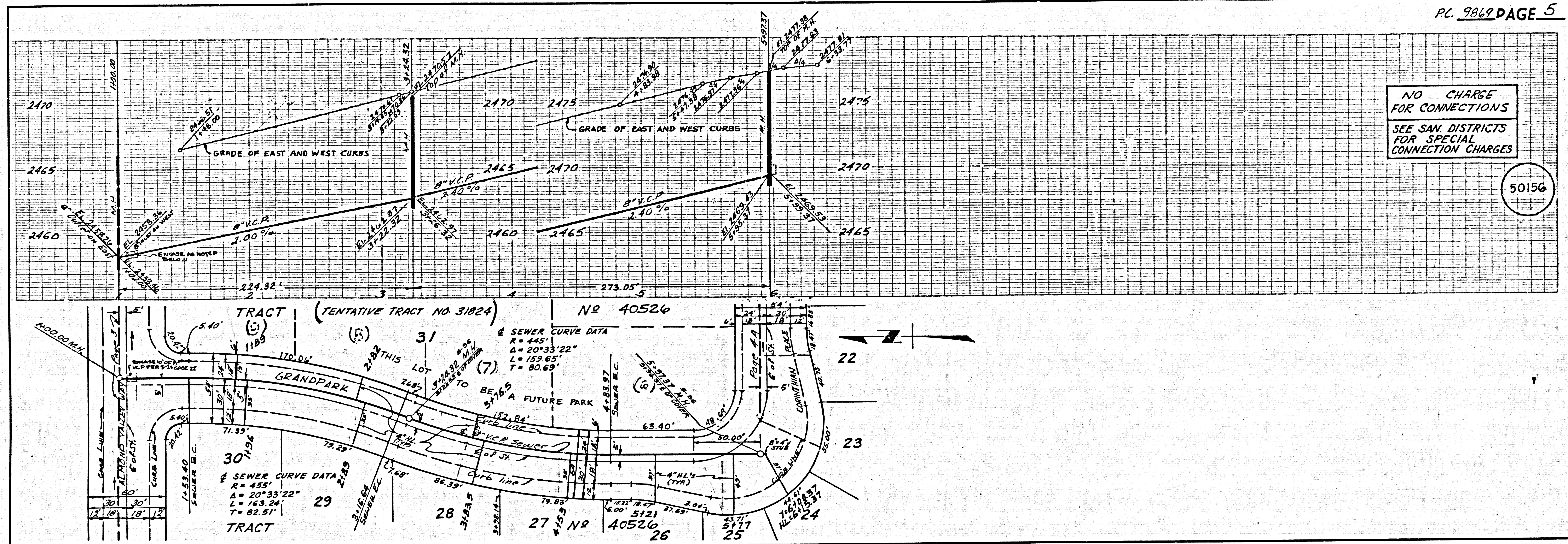
50154



NO CHARGE FOR CONNECTIONS  
SEE SAN DISTRICTS FOR SPECIAL CONNECTION CHARGES

50155

5000 24 5500 24 12. MO. 40526



NO CHARGE FOR CONNECTIONS SEE SAN. DISTRICTS FOR SPECIAL CONNECTION CHARGES

50156

3 9862 PL. 9862