

**ANNELLEN STREET (Pvt. St)**  
**PRIVATE CONTRACT NO. 9870**

W.S. 38-A, 4  
 1 SHEET 2 PAGES  
 47993  
 SCALE: VERT. 1"=6' JULY 7, 1980  
 HORIZ. 1"=80'  
 PREPARED IN THE OFFICES OF  
**D.T.M. AND ASSOCIATES**  
 5207 MAYBERRY RANCHO CUCAMONGA, CALIF. 91701  
 BY: *David J. DeWitt*  
 REG. C. E. No. 23499

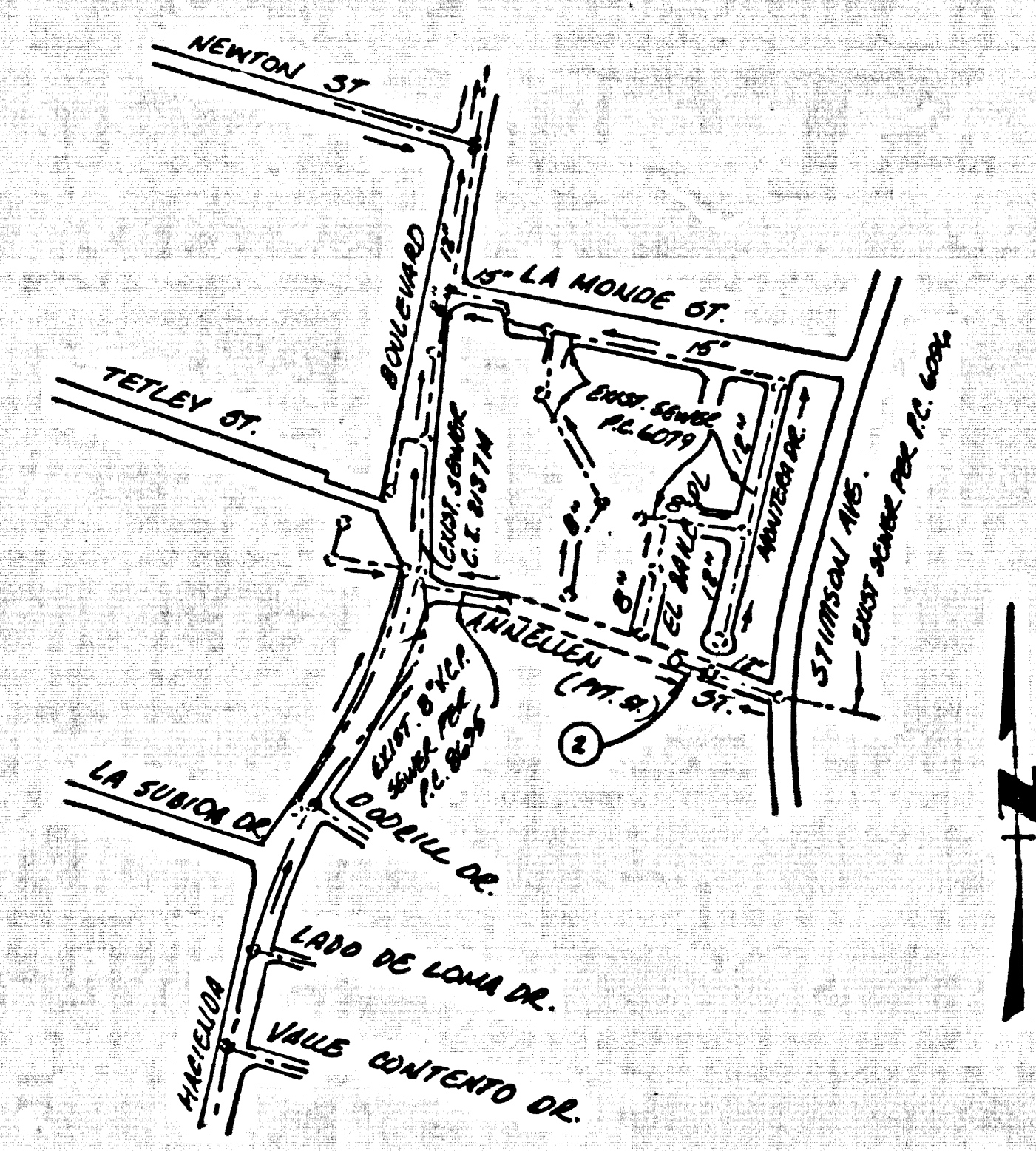
- GENERAL NOTES: DOUBLE SCALE**
1. ELEVATIONS ARE IN FEET ABOVE U.S.C. & G.S. SEA LEVEL DATUM OF 1929.
  2. NO REVISIONS SHALL BE MADE IN THESE PLANS WITHOUT THE APPROVAL OF THE COUNTY ENGINEER.
  3. NO REPRESENTATIVE OF THE COUNTY ENGINEER WILL SURVEY OR LAY OUT ANY PORTION OF THE WORK.
  4. GRADES TO WHICH THIS IMPROVEMENT IS TO BE CONSTRUCTED ARE SHOWN ON PLANS AND PROFILES. GRADE POINTS FOR TOP OF CURB, CENTER LINE OF STREETS, OR CENTER LINE OF ALLEYS ARE SHOWN BY CIRCLES ON PROFILES. AT ALL POINTS BETWEEN DESIGNATED POINTS THE GRADE SHALL BE ESTABLISHED SO AS TO CONFORM TO A STRAIGHT LINE DRAWN BETWEEN SAID DESIGNATED POINTS.
  5. THE PRIVATE ENGINEER SHALL FURNISH THE COUNTY ENGINEER WITH GRADE SHEETS AND STATIONING FOR ALL HOUSE LATERALS AND "T" OR "Y" BRANCHES AND SHALL PROVIDE STAKES FOR THEM AT THEIR PROPER LOCATIONS WITH STATIONING PLAINLY MARKED. ALL HOUSE LATERALS SHALL BE CONSTRUCTED IN A STRAIGHT ALIGNMENT AT RIGHT ANGLES FROM THE MAIN LINE SEWER EXCEPT AS SHOWN ON THE PLANS. HOUSE LATERALS FROM CHIMNEYS SHALL NOT HAVE AN ANGLE OF LESS THAN 45° WITH THE MAIN LINE SEWER. ANY CHANGE IN ALIGNMENT SHALL BE REQUESTED IN WRITING BY THE PRIVATE ENGINEER.
  6. THE PRIVATE ENGINEER SHALL FURNISH THE HOUSE LATERAL DEPTH AT THE PROPERTY LINE BELOW THE TOP OF CURB ELEVATION FOR EACH HOUSE LATERAL ON THE GRADE SHEET.
  7. BEFORE WORK CAN BE STARTED, THE CONTRACTOR MUST OBTAIN A PERMIT TO EXCAVATE IN COUNTY STREETS FROM THE L.A. COUNTY ROAD DEPT., DISTRICT OFFICE NO. 1, AND PAY A FEE TO THE COUNTY ENGINEER, 804 E. SOUTH AVE., SAN DIMAS REGIONAL OFFICE, TO COVER THE COST OF CONSTRUCTION INSPECTION AND RECORD PLANS.
  8. IF WORK IS TO BE DONE IN A STATE HIGHWAY, A PERMIT MUST BE OBTAINED FROM THE STATE OF CALIFORNIA, DIVISION OF HIGHWAYS, 120 SOUTH SPRING STREET, LOS ANGELES, CALIFORNIA.
  9. APPROVAL OF THIS PLAN BY THE COUNTY OF LOS ANGELES DOES NOT CONSTITUTE A REPRESENTATION AS TO THE ACCURACY OF THE LOCATION OF OR THE EXISTENCE OR NON-EXISTENCE OF ANY UNDERGROUND UTILITY PIPE, OR STRUCTURE WITHIN THE LIMITS OF THIS PROJECT. THE NOTE APPLIES TO ALL PAGES.
  10. REFER TO SECTION 7-10-43 OF THE STANDARD SPECIFICATIONS, REGARDING SAFETY ORDERS.
  11. **PROVE TO ISSUANCE OF THE REQUIRED SEWER CONSTRUCTION PERMIT BY THE COUNTY ENGINEER THE CONTRACTOR SHALL OBTAIN A PERMIT TO EXCAVATE FROM THE STATE OF CALIFORNIA DEPARTMENT OF PUBLIC SAFETY, DIVISION OF INDUSTRIAL SAFETY AND SHALL FILE A CERTIFICATE OF WORKERS' COMPENSATION INSURANCE WITH THE COUNTY ENGINEER NAMED AS CERTIFICATE HOLDER TO BE NOTIFIED 30 DAYS PRIOR TO CANCELLATION OF POLICY.**
  12. **INDICATES HOUSE LATERALS TO BE CONSTRUCTED BY 14" R/S PER FOOT TO SANITARY SEWER BASEMENT LINE.**
- CONSTRUCTION NOTES:**
1. WORK SHALL BE CONSTRUCTED ACCORDING TO THE STANDARD SPECIFICATIONS FOR PUBLIC WORKS CONSTRUCTION 1979 EDITION WITH (20%) SUPPLEMENT AND COUNTY ENGINEER SPECIAL PROVISIONS FOR THE CONSTRUCTION OF SANITARY SEWERS DATED SEPTEMBER 21, 1976, AND SHALL BE PROSECUTED ONLY IN THE PRESENCE OF THE COUNTY ENGINEER.
  2. THE CONTRACTOR SHALL NOTIFY THE ENVIRONMENTAL DEVELOPMENT DIVISION BY TELEPHONE (213) 718-2151, BY MAIL (MAILING ADDRESS) FOUR HOUSE BEFORE STARTING ANY WORK UNDER THIS CONTRACT.
  3. HOUSE LATERALS TO BE CONSTRUCTED WITH BRVETS AT PROPERTY LINE & FEET BELOW CURB GRADE EXCEPT AS NOTED.
  4. WYE OR TEE BRANCHES MAY BE USED FOR CONNECTIONS TO MANHOLE SEWERS EXCEPT AS NOTED.
  5. ALL STRUCTURES SHALL BE OTHER BLOCK MANHOLES PER S-2 OF PRECAST CONCRETE MANHOLES PER S-26, EXCEPT AS NOTED.
  6. PROPERTY STAKES ON THE PROPERTY LINE OR PROPERTY LINE PRODUCE AT RIGHT ANGLES TO THE SEWER LINE AT THE CENTER LINE OF EACH MANHOLE.
  7. MANHOLE TOPS IN UNIMPROVED RIGHTS OF WAY TO BE SIX INCHES ABOVE FINISHED GRADE.
  8. WITHIN CLAY PIPE JOINTS SHALL BE TYPE "F", OR "1" PER STANDARD SPECIFICATIONS SECTION 208-2.
  9. IF A POWER POLE IS WITHIN THREE FEET OF THE SEWER, THE SEWER SHALL BE ENCASED, PER S-26, CASE 2, TWO FEET ON EACH SIDE FROM THE POINT OF INTERFERENCE.
  10. IF DURING THE COURSE OF CONSTRUCTION IT IS DETERMINED THAT THERE IS LESS THAN FOUR FEET OF COVER OVER THE TOP OF A MAIN LINE OR HOUSE LATERAL V.C.P. SEWER WHICH IS NOT INDICATED ON THE PLANS, THE PIPE SHALL BE ENCASED PER S-26, CASE 2, UNLESS OTHERWISE APPROVED BY THE COUNTY ENGINEER.
  11. ALL JOINTS BETWEEN CAST IRON PIPE AND WITHIN CLAY PIPE SHALL BE MADE WITH A RUBBER SLEEVE JOINT, TYPE "C" OR "W", (WITH SLEEVE) IF NECESSARY PER STANDARD SPECIFICATIONS SECTION 208-2.
  12. REFER TO THE NOTES FOR SEWERAGE IN SECTION 208-4 OF THE STANDARD SPECIFICATIONS AND SPECIAL PROVISIONS.
  13. RESURFACE ALL TRENCHES WITHIN PAVED AREAS TO MEET L.A. COUNTY ROAD DEPT. OR CALIFORNIA STATE HIGHWAY REQUIREMENTS IN ACCORDANCE WITH PERMITS.
  14. FULL COMPLIANCE WITH SECTION 208-2.6 OF THE SPECIAL PROVISIONS WILL BE REQUIRED FOR BACKFILL IN STREET CERTIFICATION OF BACKFILL CONSTRUCTION AND SAND EQUIVALENTS BY A QUALIFIED, REGISTERED TESTING LABORATORY SHALL BE PROVIDED BY THE PERMITTEE PRIOR TO THE ISSUANCE OF A CERTIFICATE OF PARTIAL ACCEPTANCE.
  15. **SPECIAL BACKFILL IN DESIGNATED AREAS:**  
 (1) ALL BACKFILL SHALL BE REMOVED SO AS TO ACHIEVE THE ORIGINAL OR FINISHED GRADES AND SLOPES SHOWN ON THE RECORDING PLANS APPROVED FOR THIS PROJECT BY THE BUILDING AND SAFETY DIVISION.  
 (2) ALL BACKFILL AND SAND REPLACED SHALL BE COMPACTED TO A MINIMUM OF 90% OF MAXIMUM DENSITY PER LA PUENTE, U.S.T.M. STANDARD METHOD OF TESTING D-15-17, 42 MINIMUM. ALL BACKFILL SHALL BE DESTROYED BY THE CONTRACTOR SHALL BE SUBMITTED TO THE ENVIRONMENTAL DEVELOPMENT DIVISION.

THE FOLLOWING LATEST REVISION STANDARD PLANS ON FILE IN THE OFFICE OF THE COUNTY ENGINEER SHALL APPLY IN THE CONSTRUCTION OF THIS PROJECT.

LEGEND	S-1
MINIMUM PUBLIC SAFETY REQUIREMENTS	S-2
BRICK MANHOLES	S-3
STANDARD MANHOLE STEP	S-4
SEWERAGE FOR SEWER PIPE	S-5
CRADLING AND ENCASING	S-6
WYE OR TEE ON THE SUPPORT	S-7
ALLOYABLE FRINGS WITHIN	S-8
LOADING MANHOLE FRAME AND COVER	S-9
NON-REINFORCED PRECAST CONCRETE MANHOLES	S-10

COUNTY OF LOS ANGELES, CALIFORNIA  
**STEPHEN J. KODANCE**, COUNTY ENGINEER **WALTER E. GARDNER**, CHIEF ENGINEER  
 APPROVED: *Samuel J. Miller* 9/18/80 APPROVED: *Frank R. DeWitt* 9/23/80  
 SAN DIMAS REGIONAL ENGINEER DISTRICT OFFICE ENGINEER  
 CHECKED: *Richard J. DeWitt* 9/18/80  
 BLDG. DIST. 2.00

B.M. CG 1623 ELEV. 405.289  
 RDBM TAG S. CB. + 1 FT. E. B.C.R. @  
 N.E. CORNER HACIENDA BLVD. + HALLIBURTON  
 RD. + 40 FT. N. C/L + 78 FT. E. C/L INT.  
 BASELINE QUAD. 1975



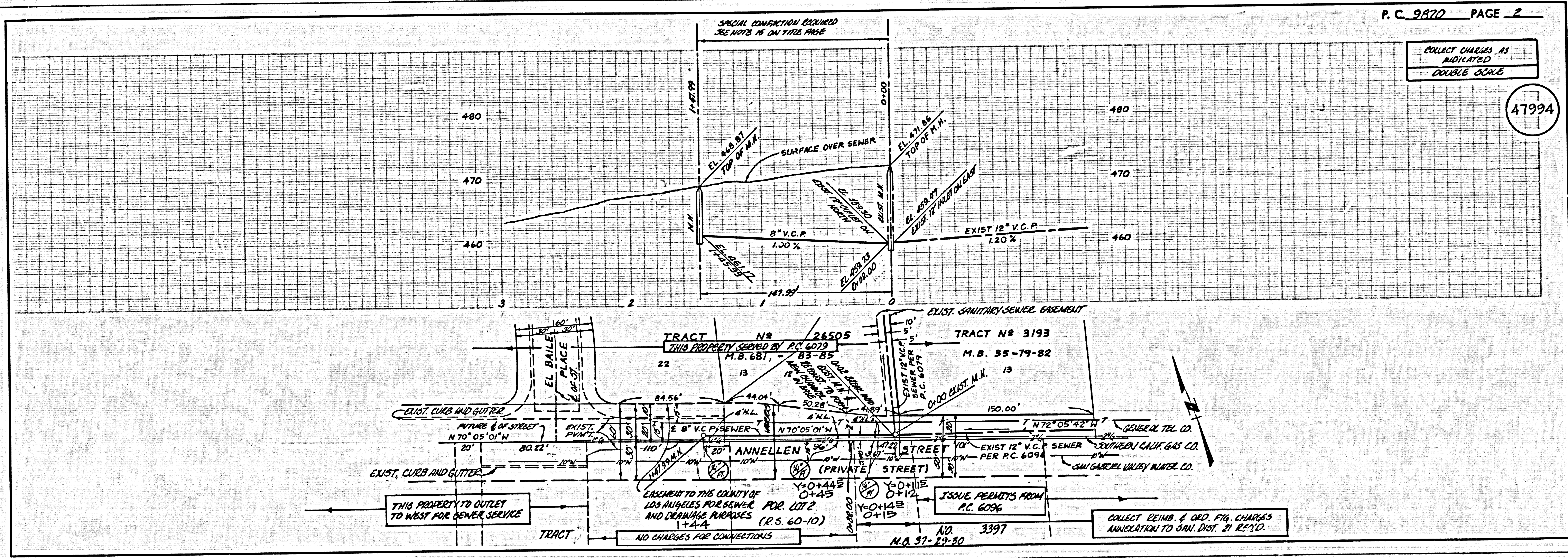
INDEX MAP  
 P.C. 9870 ANNELAN ST. (Pvt. St.)  
 SCALE: 1"=600'  
 NOTE: NUMBER IN CIRCLE INDICATES PAGE NUMBER

**PLAN REVISION NOTE**

REVISION NO. 1 DATE 10/17/80  
 ADDITION OF TWO HOUSE LATERALS  
 ON PAGE 2 AT STA. 0+09 AND  
 0+11  
 APPROVED: *Richard J. DeWitt* 10/19/80  
 DISTRICT OFFICE OF COUNTY ENGINEER

NO CONNECTION FOR THE DISPOSAL OF INDUSTRIAL WASTES SHALL BE MADE TO SEWERS SHOWN ON THESE DRAWINGS UNTIL A PERMIT FOR INDUSTRIAL WASTEWATER DISCHARGE HAS BEEN ISSUED BY THE SANITATION DISTRICTS FOR SAID CONNECTION.

BEFORE BREAKING INTO OR CONSTRUCTION ON A COUNTY SANITATION DISTRICT SEWER AND PRIOR TO FINAL ACCEPTANCE OF THE PROJECT, SANITATION DISTRICT INSPECTORS SHALL BE NOTIFIED BY PHONE - 952-8603, AND WHERE SO THAT REQUIRED INSPECTION CAN BE MADE.



COLLECT CHARGES AS INDICATED  
 DOUBLE SCALE  
 47994

(12.199) T3E8T2 M3JEMMA