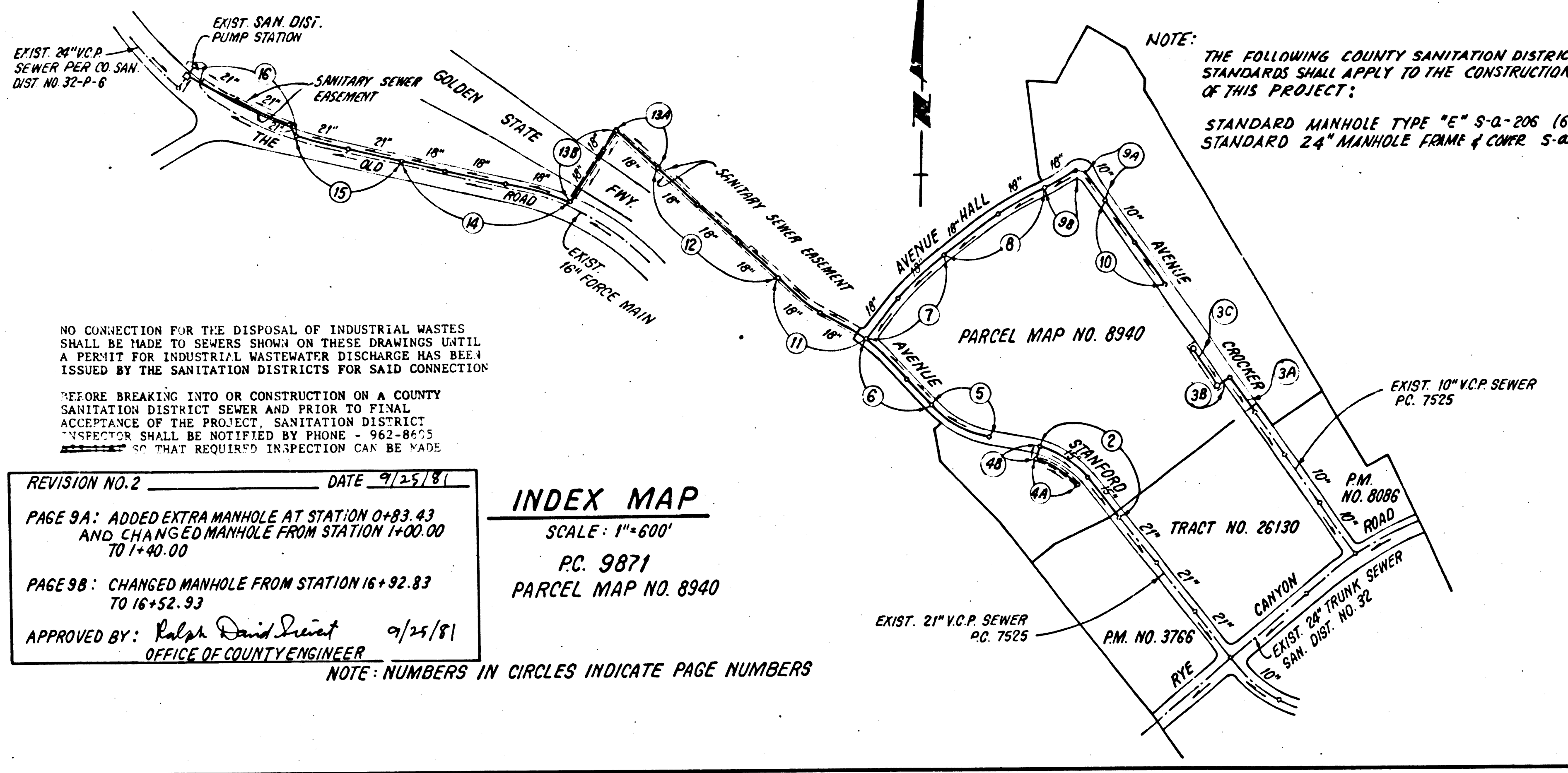


B.M. LAC RD BL 777 ELEV. 1081.158
 USC + 65 MON SW END NW ABUTMENT
 S.P.R.R. BRIDGE 446 16 0.5 MI. E.
 GOLDEN ST. FWY. MKD. (T 370 1953)
 NEWHALL QUAD. 19 72

REVISION NO 1 DATE 9/25/81
 PAGE 1: REVISED STD. M.H. TYPE D S-8-204 TO STD M.H. TYPE E S-8-206 (60" DIA.)
 PAGE 16: REVISED PLAN AND PROFILE FROM STA. 4+00.00 TO 1+01.00 AND DETAIL OF M.H. @ STA. 1+01.00
 APPROVED BY: *Ralph David Saint* 9/25/81
 OFFICE OF COUNTY ENGINEER

NOTICE TO CONTRACTOR:
 PRIOR TO CONSTRUCTION OF THE STORM DRAIN THE CONTRACTOR SHALL EXPOSE THE EXISTING UTILITIES TO VERIFY THE CLEARANCES SHOWN ON THE PLAN. THE EXISTENCE & LOCATION OF ANY UNDERGROUND UTILITY PIPE OR STRUCTURES SHOWN ON THESE PLANS ARE OBTAINED BY A SEARCH OF AVAILABLE RECORDS THE CONTRACTOR IS RESPONSIBLE TO TAKE DUE PRECAUTIONARY MEASURES TO PROTECT UTILITY LINES SHOWN AND OTHER LINES NOT OF RECORD OR NOT SHOWN ON THESE PLANS.



NO CONNECTION FOR THE DISPOSAL OF INDUSTRIAL WASTES SHALL BE MADE TO SEWERS SHOWN ON THESE DRAWINGS UNTIL A PERMIT FOR INDUSTRIAL WASTEWATER DISCHARGE HAS BEEN ISSUED BY THE SANITATION DISTRICTS FOR SAID CONNECTION.
 BEFORE BREAKING INTO OR CONSTRUCTION ON A COUNTY SANITATION DISTRICT SEWER AND PRIOR TO FINAL ACCEPTANCE OF THE PROJECT, SANITATION DISTRICT INSPECTION SHALL BE NOTIFIED BY PHONE - 962-8653. INSPECTION SHALL BE REQUIRED PRIOR TO CONSTRUCTION.

REVISION NO. 2 DATE 9/25/81
 PAGE 9A: ADDED EXTRA MANHOLE AT STATION 0+93.43 AND CHANGED MANHOLE FROM STATION 1+00.00 TO 1+40.00
 PAGE 9B: CHANGED MANHOLE FROM STATION 16+92.83 TO 16+52.93
 APPROVED BY: *Ralph David Saint* 9/25/81
 OFFICE OF COUNTY ENGINEER

INDEX MAP
 SCALE: 1"=600'
 P.C. 9871
 PARCEL MAP NO. 8940

NOTE: NUMBERS IN CIRCLES INDICATE PAGE NUMBERS

- GENERAL NOTES:
- ELEVATIONS ARE IN FEET ABOVE U.S.C. & G.S. SEA LEVEL DATUM OF 1929
 - NO REVISIONS SHALL BE MADE IN THESE PLANS WITHOUT THE APPROVAL OF THE COUNTY ENGINEER
 - NO REPRESENTATION IS TO BE CONSTRUCTED AS SHOWN ON PLANS AND PROFILES. GRADE POINTS FOR TOP OF CURBS, CENTER LINE OF STREETS, OR CENTER LINE OF ALLEYS ARE SHOWN BY CIRCLES ON PROFILES AT ALL POINTS BETWEEN DESIGNATED POINTS. THE GRADE SHALL BE ESTABLISHED SO AS TO CONFORM TO A STRAIGHT LINE DRAWN BETWEEN SAID DESIGNATED POINTS.
 - THE PRIVATE ENGINEER SHALL FURNISH THE COUNTY ENGINEER WITH GRADE SHEETS AND STATIONING FOR ALL HOUSE LATERALS AND "T" OR "Y" BRANCHES AND SHALL PROVIDE STAKES FOR THEM AT THEIR PROPER LOCATIONS WITH STATIONING PLAINLY MARKED. ALL HOUSE LATERALS SHALL BE CONSTRUCTED IN A STRAIGHT ALIGNMENT AT RIGHT ANGLES FROM THE MAIN LINE SEWER EXCEPT AS SHOWN ON THE PLANS. HOUSE LATERALS FROM CHIMNEYS SHALL NOT HAVE AN ANGLE OF LESS THAN 45° WITH THE MAIN LINE SEWER. ANY CHANGE IN ALIGNMENT SHALL BE REQUESTED IN WRITING BY THE PRIVATE ENGINEER.
 - THE PRIVATE ENGINEER SHALL FURNISH THE HOUSE LATERAL DEPTH AT THE PROPERTY LINE BELOW THE TOP OF CURB ELEVATION FOR EACH HOUSE LATERAL ON THE GRADE SHEET.
 - BEFORE WORK CAN BE STARTED, THE CONTRACTOR MUST OBTAIN A PERMIT TO EXCAVATE IN COUNTY STREETS FROM THE L.A. COUNTY ROAD DEPT., DISTRICT OFFICE NO. 5, AND PAY A FEE TO THE COUNTY ENGINEER, 550 S. VERMONT AVE., LOS ANGELES, CALIFORNIA, 90020, TO COVER THE COST OF CONSTRUCTION INSPECTION AND RECORD PLANS.
 - IF WORK IS TO BE DONE ON A STATE HIGHWAY, A PERMIT MUST BE OBTAINED FROM THE STATE OF CALIFORNIA, DIVISION OF HIGHWAYS, 130 SOUTH SPRING STREET, LOS ANGELES, CALIFORNIA.
 - APPROVAL OF THIS PLAN BY THE COUNTY OF LOS ANGELES DOES NOT CONSTITUTE A REPRESENTATION AS TO THE ACCURACY OF THE LOCATION OR OF THE EXISTENCE OR NON-EXISTENCE OF ANY UNDERGROUND UTILITY PIPE, OR STRUCTURE WITHIN THE LIMITS OF THIS PROJECT. THIS NOTE APPLIES TO ALL PAGES.
 - REFER TO SECTION 71041 OF THE STANDARD SPECIFICATIONS, REGARDING SAFETY ORDERS.
 - PRIOR TO THE ISSUANCE OF THE REQUIRED SEWER CONSTRUCTION PERMIT, THE CONTRACTOR SHALL OBTAIN AND FILE WITH THE COUNTY ENGINEER COPIES OF A PERMIT TO EXCAVATE IN COUNTY STREETS FROM THE LOS ANGELES COUNTY ROAD DEPARTMENT, A PERMIT FOR EXCAVATIONS AND TRENCHES FROM THE STATE OF CALIFORNIA, DIVISION OF INDUSTRIAL SAFETY AND A CERTIFICATE OF WORKER'S COMPENSATION INSURANCE WITH THE DEPARTMENT OF COUNTY ENGINEER, 550 SOUTH VERMONT, ROOM 406, LOS ANGELES, CALIFORNIA 90020, NAMED AS THE CERTIFICATE HOLDER TO BE NOTIFIED 30 DAYS PRIOR TO CANCELLATION OF POLICY.

- CONSTRUCTION NOTES:
- WORK SHALL BE CONSTRUCTED ACCORDING TO THE STANDARD SPECIFICATIONS FOR PUBLIC WORKS CONSTRUCTION (1979 EDITION) WITH "200" SUPPLEMENTS AND COUNTY ENGINEER SPECIAL PROVISIONS FOR THE CONSTRUCTION OF SANITARY SEWERS DATED SEPTEMBER 23, 1980 AND SHALL BE PROSECUTED ONLY IN THE PRESENCE OF THE COUNTY ENGINEER.
 - THE CONTRACTOR SHALL NOTIFY THE CONSTRUCTION DIVISION BY TELEPHONE, M/DISON 9 4747, EXT. 81551, AT LEAST TWENTY-FOUR HOURS BEFORE STARTING ANY WORK UNDER THIS CONTRACT.
 - HOUSE LATERALS TO BE CONSTRUCTED WITH INVERTS AT PROPERTY LINE 4 FEET BELOW CURB GRADE EXCEPT AS NOTED.
 - WYE OR TE BRANCHES MAY BE USED FOR CONNECTIONS TO MAINLINE SEWERS EXCEPT AS NOTED.
 - ALL STRUCTURES SHALL BE BETHLEHEM BRICK MANHOLES PER S-8-206 OR PRECAST CONCRETE MANHOLES PER S-36, EXCEPT AS NOTED.
 - PROVIDE STAKES ON THE PROPERTY LINE OR PROPERTY LINES PRODUCED AT RIGHT ANGLES TO THE SEWER LINE AT THE CENTER LINE OF EACH MANHOLE.
 - MANHOLE TOPS IN UNIMPROVED RIGHTS OF WAY TO BE SIX INCHES ABOVE FINISHED GRADE.
 - VITRIFIED CLAY PIPE JOINTS SHALL BE TYPE "D", OR "C" PER STANDARD SPECIFICATIONS SECTION 200-2.
 - IF A POWER POLE IS WITHIN THREE FEET OF THE SEWER, THE SEWER SHALL BE ENCASED, PER S-23, CASE II, TWO FEET ON EACH SIDE FROM THE POINT OF INTERFERENCE.
 - IF DURING THE COURSE OF CONSTRUCTION IT IS DETERMINED THAT THERE IS LESS THAN FOUR FEET OF COVER OVER THE TOP OF A MAIN LINE OR HOUSE LATERAL V.C.P. SEWER WHICH IS NOT INDICATED ON THE PLANS, THE PIPE SHALL BE ENCASED PER S-23, CASE II UNLESS OTHERWISE APPROVED BY THE COUNTY ENGINEER.
 - ALL JOINTS BETWEEN CAST IRON PIPE AND VITRIFIED CLAY PIPE SHALL BE MADE WITH A RUBBER SLEEVE JOINT, TYPE "C" OR "D", WITH BUSHING IF NECESSARY PER STANDARD SPECIFICATIONS, SECTION 200-2.
 - SEWERS TO BE TESTED FOR LEAKAGE PER SECTION 306-1.6 OF THE STANDARD SPECIFICATIONS AND SPECIAL PROVISIONS.
 - RESURFACE ALL TRENCHES WITHIN PAVED AREAS TO MEET L.A. COUNTY ROAD DEPT. OR CALIFORNIA STATE HIGHWAY REQUIREMENTS IN ACCORDANCE WITH PERMITS.
 - FULL COMPLIANCE WITH SECTION 306-1.5.5 OF THE SPECIAL PROVISIONS WILL BE REQUIRED FOR BACKFILL IN STREETS. CERTIFICATION OF BACKFILL COMPACTION AND SAND EQUIVALENTS BY A QUALIFIED, REGISTERED TESTING LABORATORY SHALL BE PROVIDED BY THE PERMITTEE PRIOR TO THE ISSUANCE OF A CERTIFICATE OF PARTIAL ACCEPTANCE.
 - SPECIAL BACKFILL IN EASEMENT CONSTRUCTION: (A) BACKFILL TRENCH AND REPLACE OTHER EARTH SO AS TO ACHIEVE THE NATURAL OF FINISHED GRADES AND SLOPES SHOWN ON THE GRADING PLAN APPROVED FOR THIS DEVELOPMENT BY THE BUILDING & SAFETY DIVISION. (B) ALL BACKFILL AND EXISTING REPLACED SHALL BE COMPACTED TO A MINIMUM OF 90% OF MAXIMUM DENSITY PER A.S.T.M. 900 METHOD OF TEST. (C) ALL AS INDICATED ACCEPTABLE SANTA CLARITA VALLEY CERTIFICATION OF SUCH COMPACTION SHALL BE SUBMITTED TO THE ENVIRONMENTAL DEVELOPMENT DIVISION.

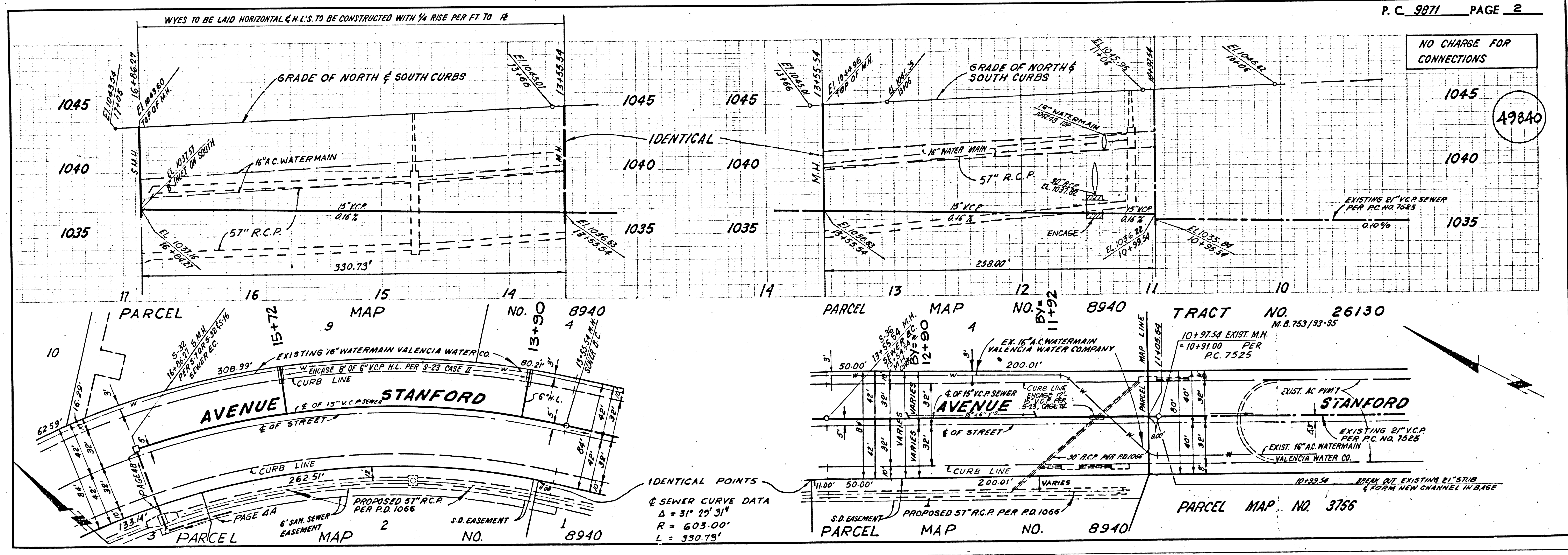
PARCEL MAP NO. 8940
 PRIVATE CONTRACT NO. 9871
 INDEX 270 S 101, 270 S 105, 270 S 109

W.S. 63
 8 SHEETS, 16 PAGES
 SCALE: HORIZ. 1"=40'
 VERT. 1"=4'
 SEPTEMBER, 1980
 PREPARED IN THE OFFICES OF
SIKAND ENGINEERING ASSOCIATES
 15230 BURBANK BLVD.
 VAN NUYS, CALIFORNIA 91411 (213) 787-8550
 BY: *Ralph David Saint* C.E. No. 21823

THE FOLLOWING LATEST REVISED STANDARD PLANS ON FILE IN THE OFFICE OF THE COUNTY ENGINEER SHALL APPLY IN THE CONSTRUCTION OF THIS PROJECT.

LEGEND	S-1
MINIMUM PUBLIC SAFETY REQUIREMENTS	S-2
BRICK MANHOLE	S-3
STANDARD MANHOLE STEP	S-17
BEDDING FOR SEWER PIPE	S-21
CRADLING AND ENCASUREMENT	S-22
WYE OR TE SUPPORT	S-23
ALLOWABLE TRENCH WIDTHS	S-26
LOCKING MANHOLE FRAME AND COVER	S-35
NON-REINFORCED PRECAST CONCRETE MANHOLE	S-36
JACKING PIPE	S-37
RECTANGULAR SHALLOW MANHOLE (BACK)	S-7
RECTANGULAR MANHOLE FRAME & COVERS	S-16
PRECAST CONCRETE SHALLOW MANHOLE	S-32
CHIMNEY PIPE & BASE	S-27

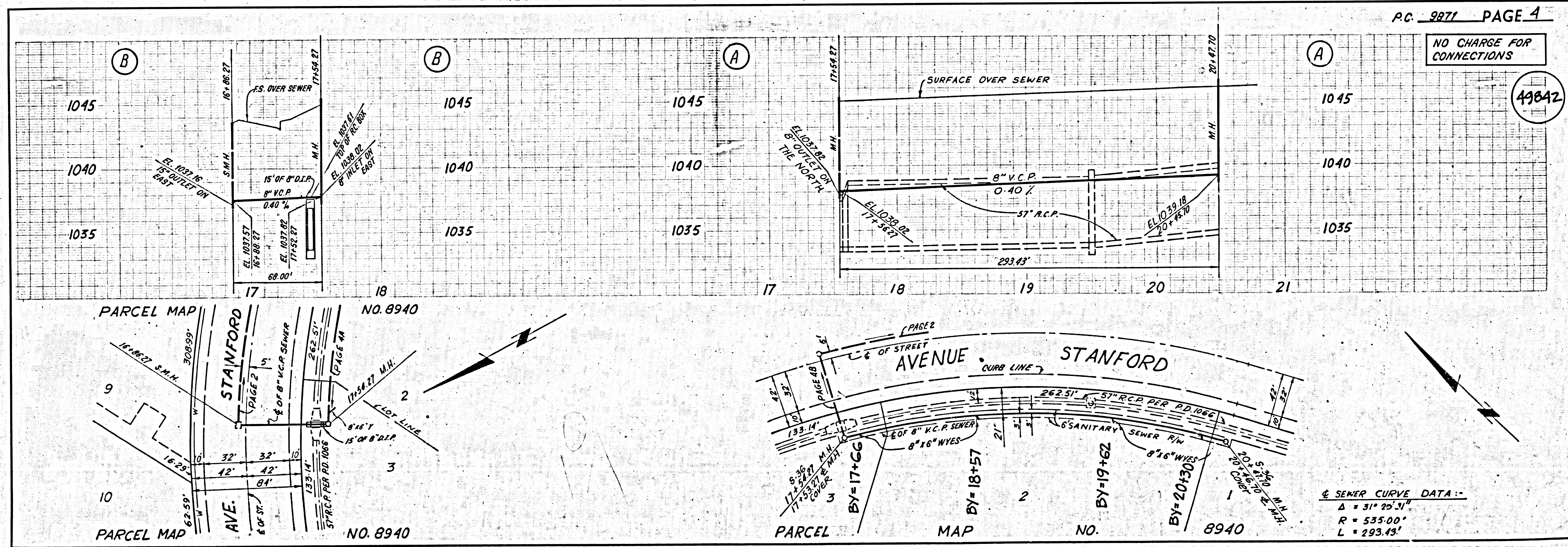
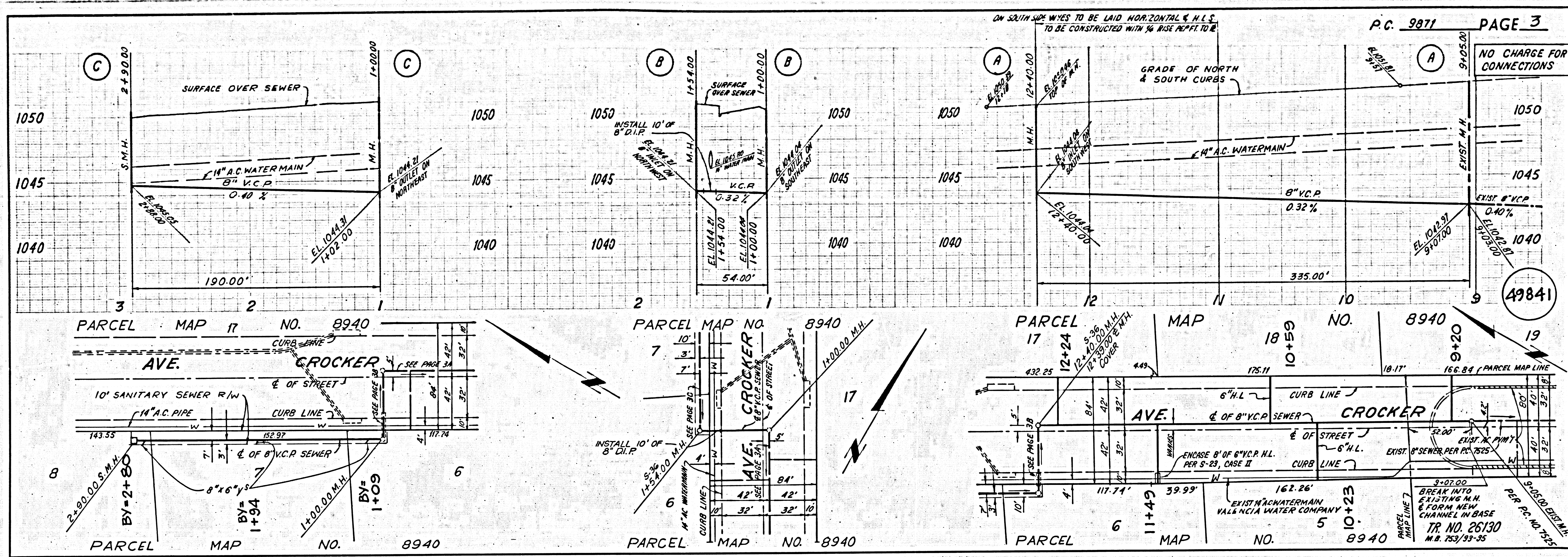
COUNTY OF LOS ANGELES, CALIFORNIA
 STEPHEN J. KRONCE, COUNTY ENGINEER
 APPROVED *Conrad* 1-23-81
 JOHN D. PARKHURST, CHIEF ENGINEER
 CO SAN DIST NO. 32
 APPROVED *Deon E. Johnson* 1/23/81
 OFFICE ENGINEER
 CHECKED *Deon E. Johnson* 1-23-81
 REG. C.E. NO. 25559
 BLDG. DIST. 82

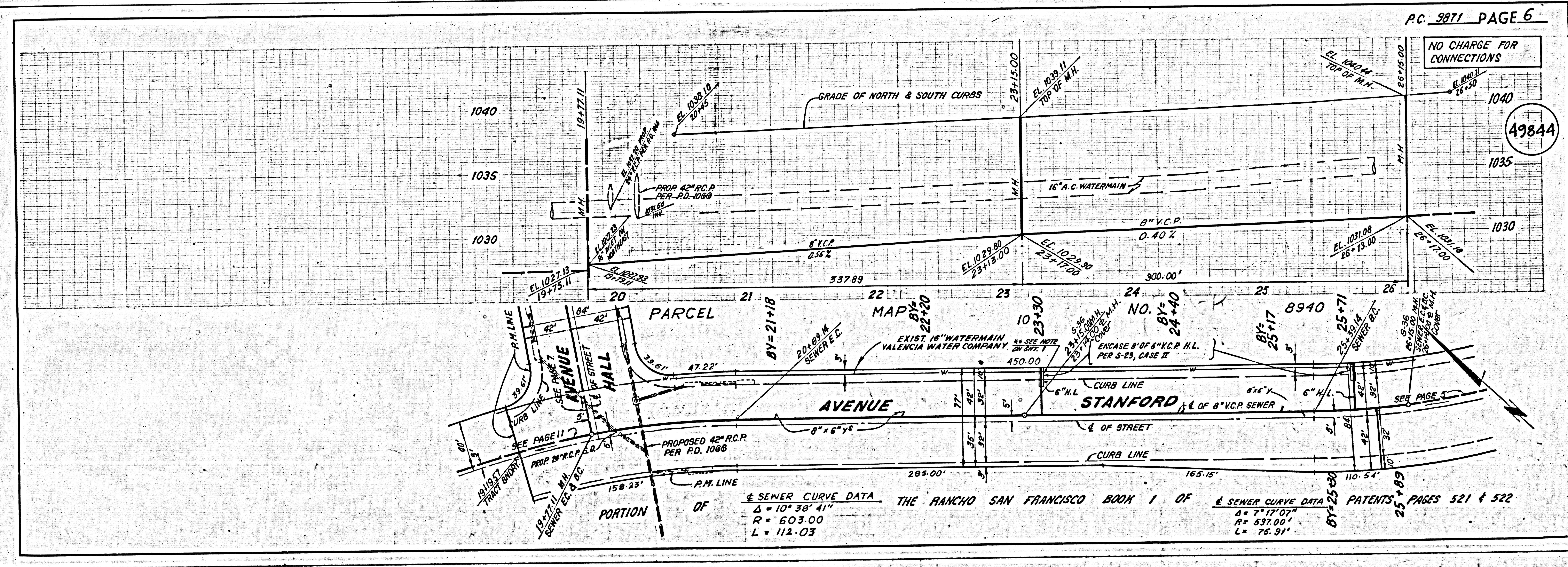
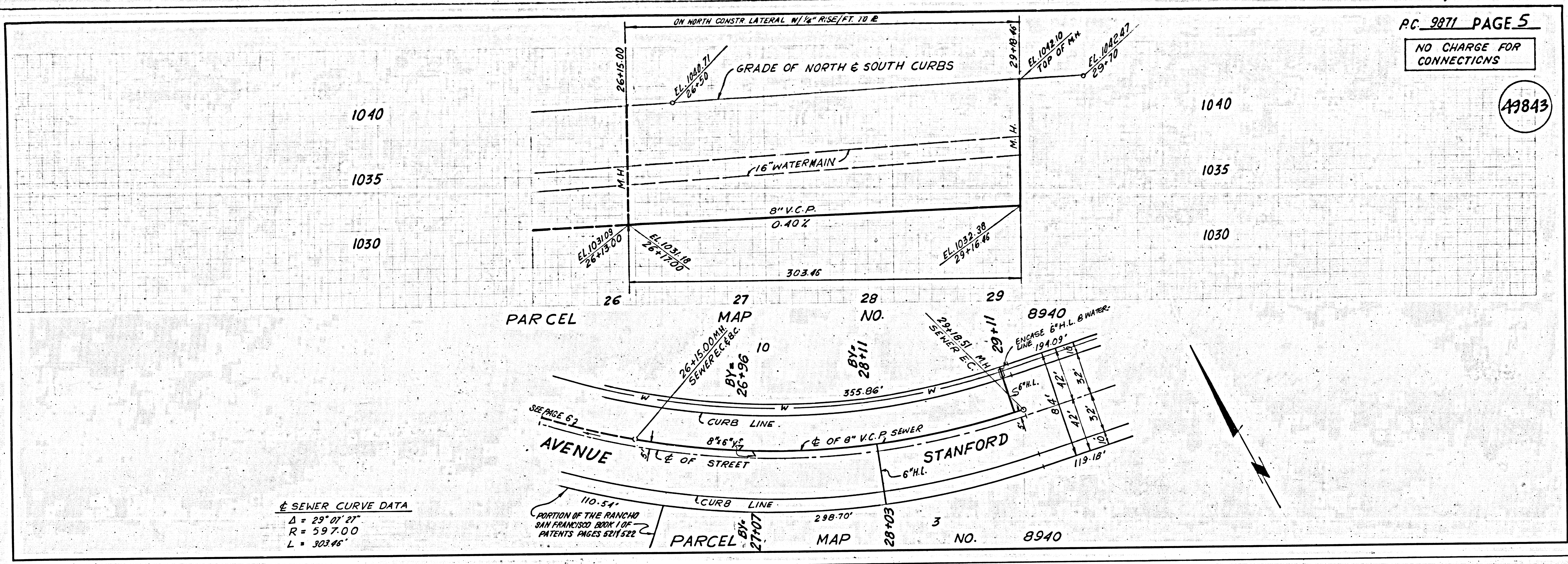


IDENTICAL POINTS
 & SEWER CURVE DATA
 $\Delta = 31^\circ 20' 31''$
 $R = 603.00'$
 $L = 330.73'$

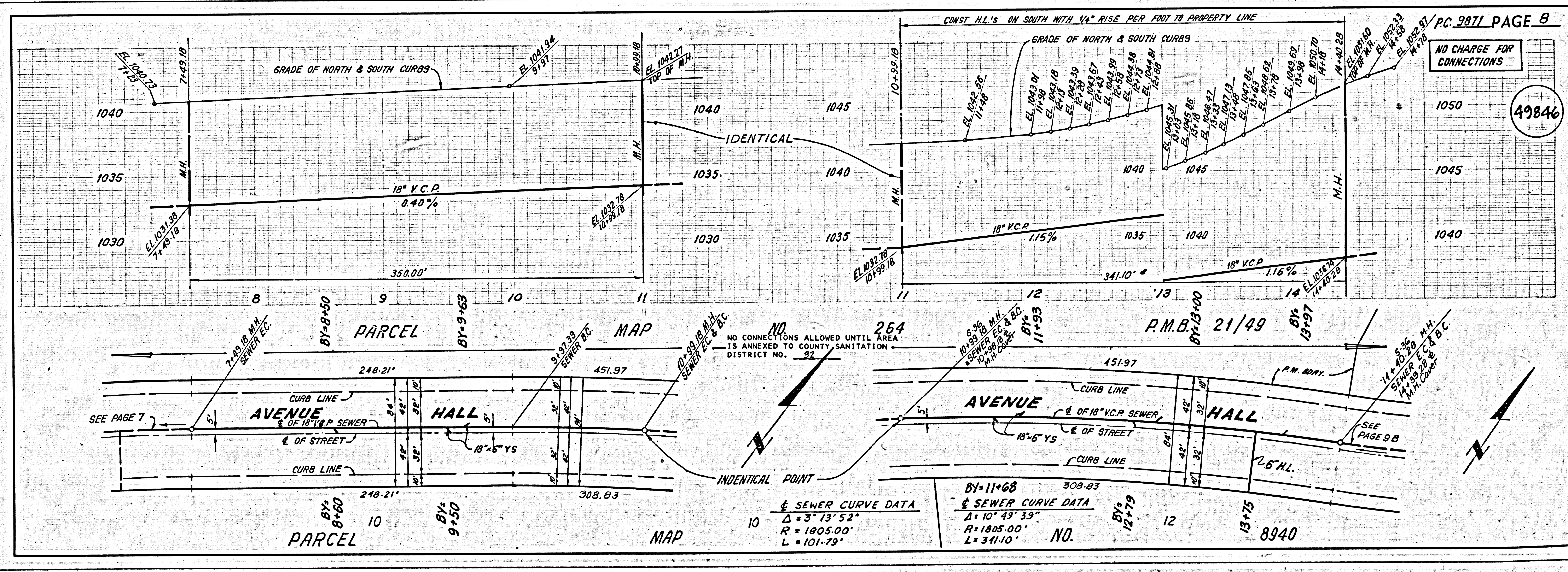
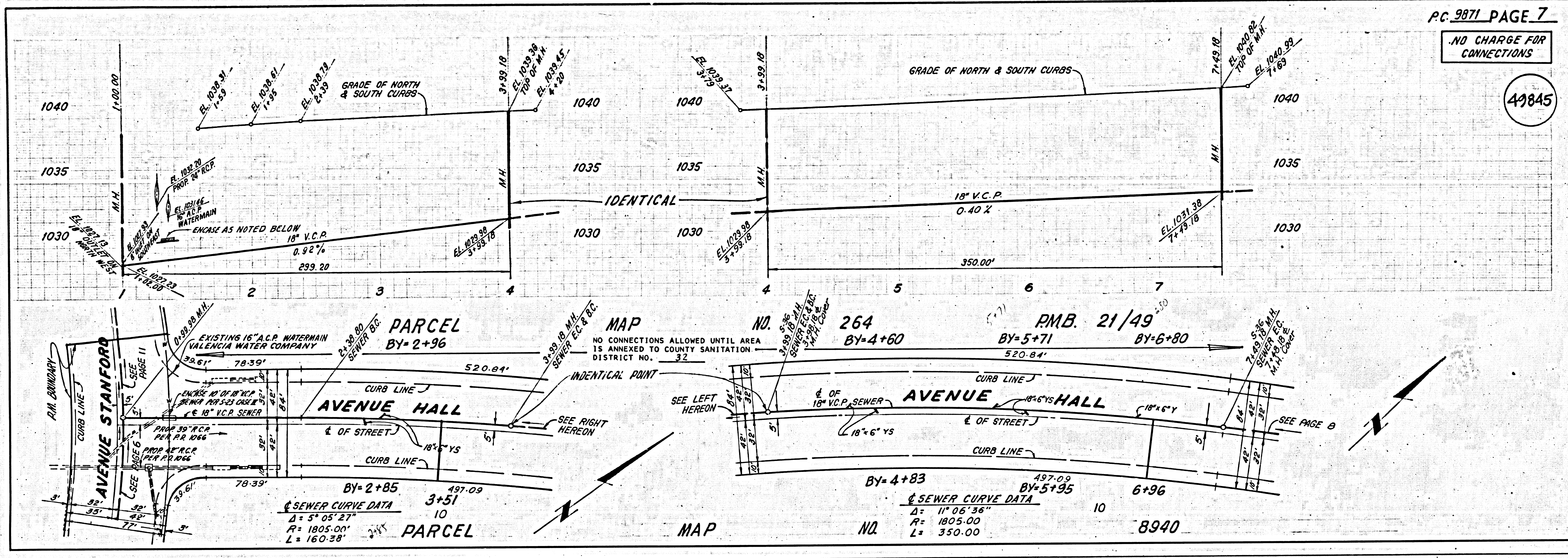
NO CHARGE FOR CONNECTIONS

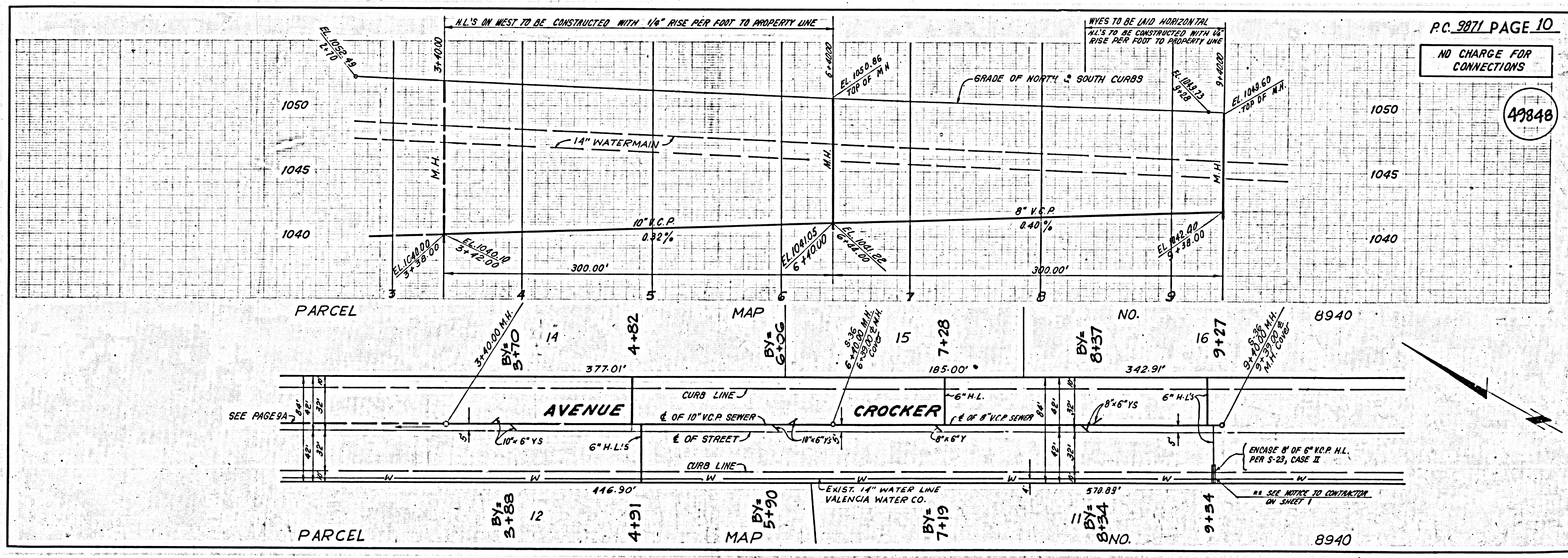
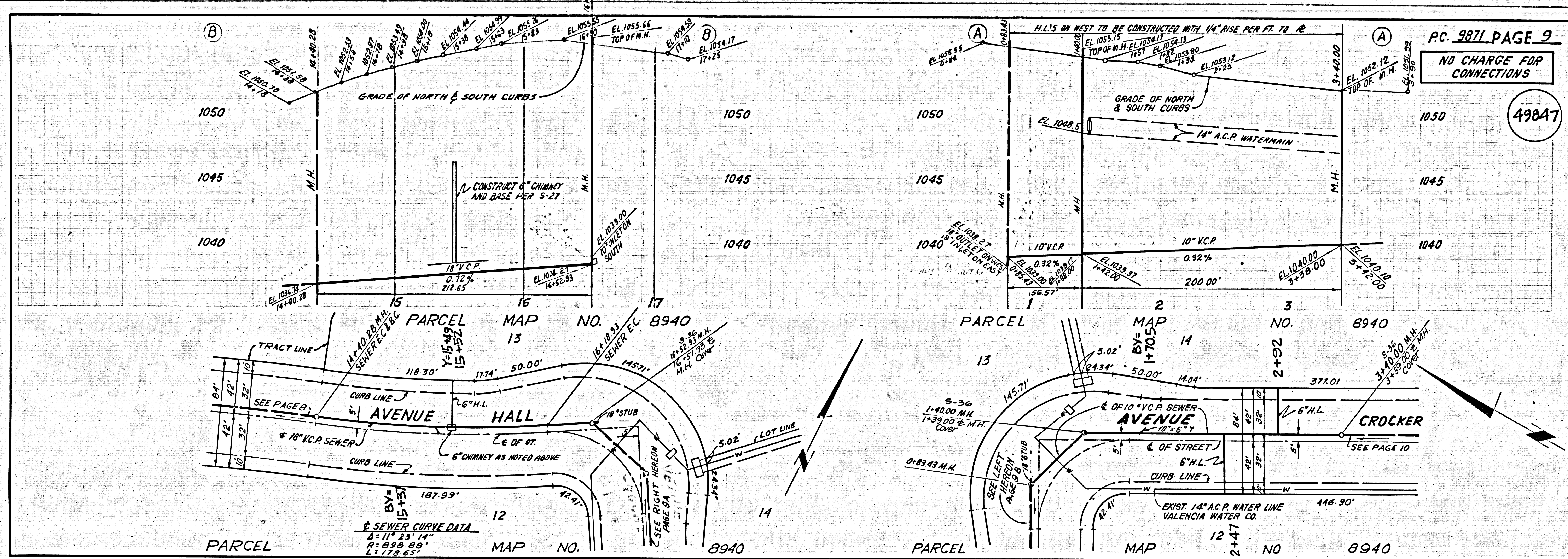
1782 29
 0988 ON PLAN 13398A



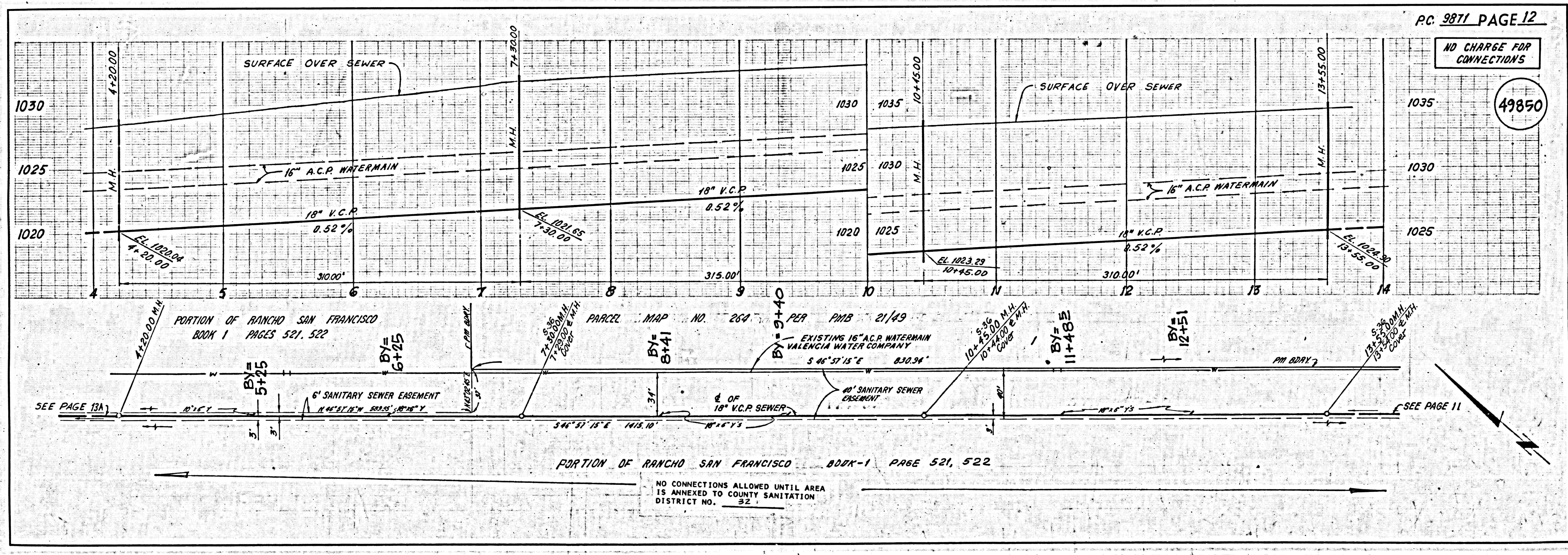
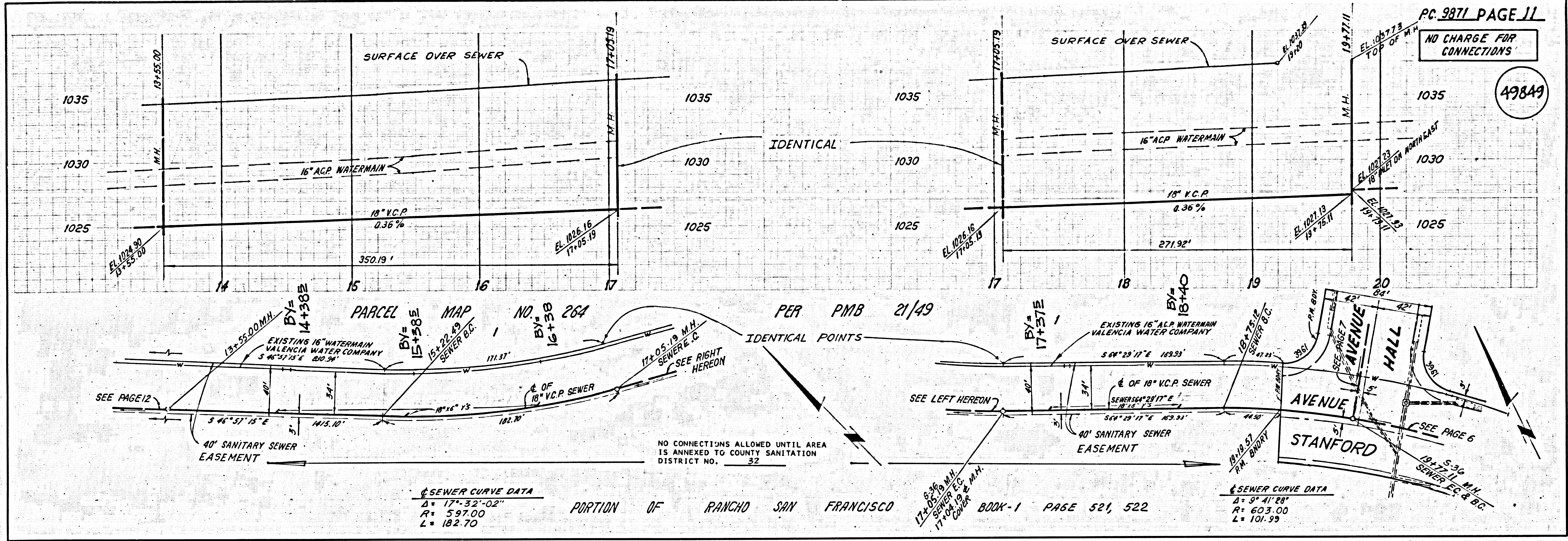


PARCEL MAP 8940



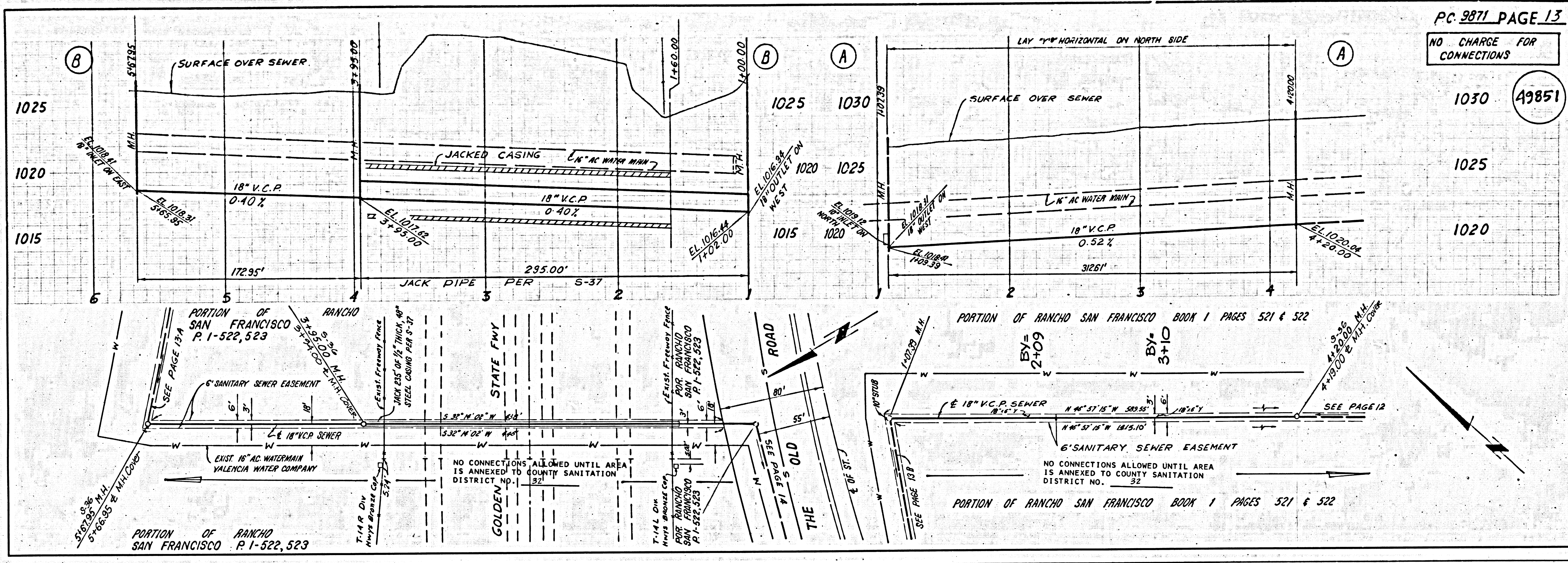


1182 59
 1182 59
 1182 59



1789 09 0588 SW 1/4 5056

L.A. COUNTY SEWER SHEET NO. 8 SOUTHERN CALIFORNIA BLUEPRINT CO. 225 11-77

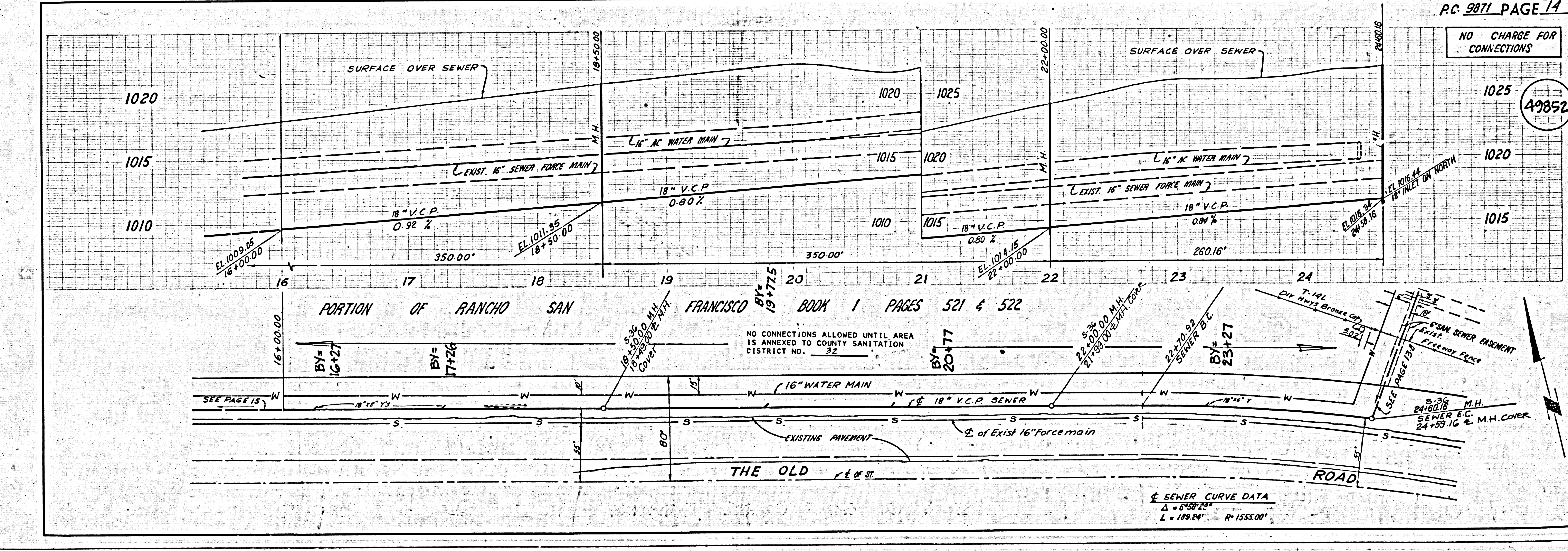


NO CHARGE FOR CONNECTIONS

1030 (49851)

1025

1020



NO CHARGE FOR CONNECTIONS

1025 (49852)

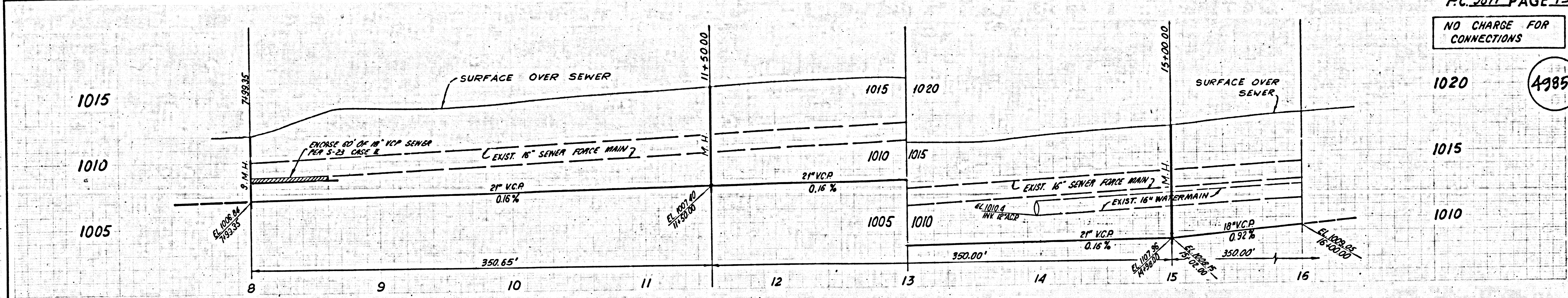
1020

1015

SEWER CURVE DATA
 Δ = 64.24°
 L = 183.24' R = 1555.00'

NO CHARGE FOR CONNECTIONS

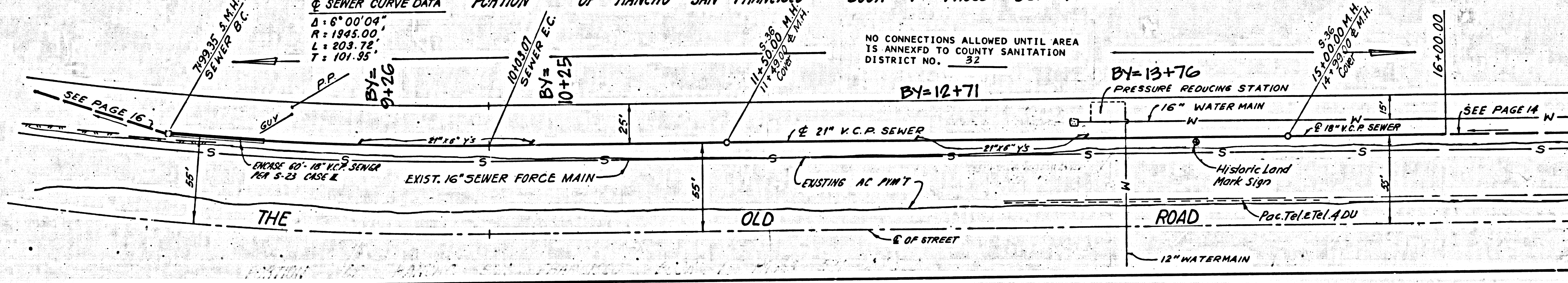
49853



SEWER CURVE DATA PORTION OF RANCHO SAN FRANCISCO BOOK 1 PAGES 521 & 522

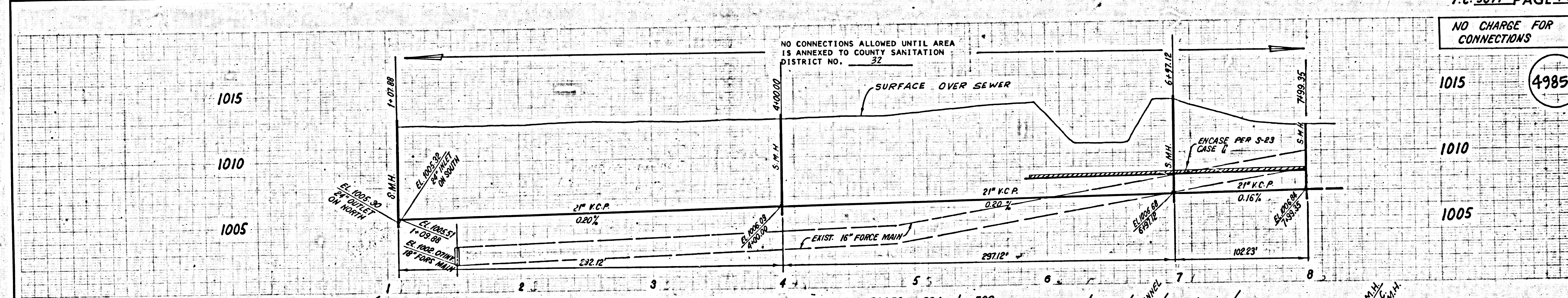
$\Delta = 6^{\circ}00'04''$
 $R = 1945.00'$
 $L = 203.72'$
 $T = 101.35'$
 $BY = 9+26$

NO CONNECTIONS ALLOWED UNTIL AREA
 IS ANNEXED TO COUNTY SANITATION
 DISTRICT NO. 32



NO CHARGE FOR CONNECTIONS

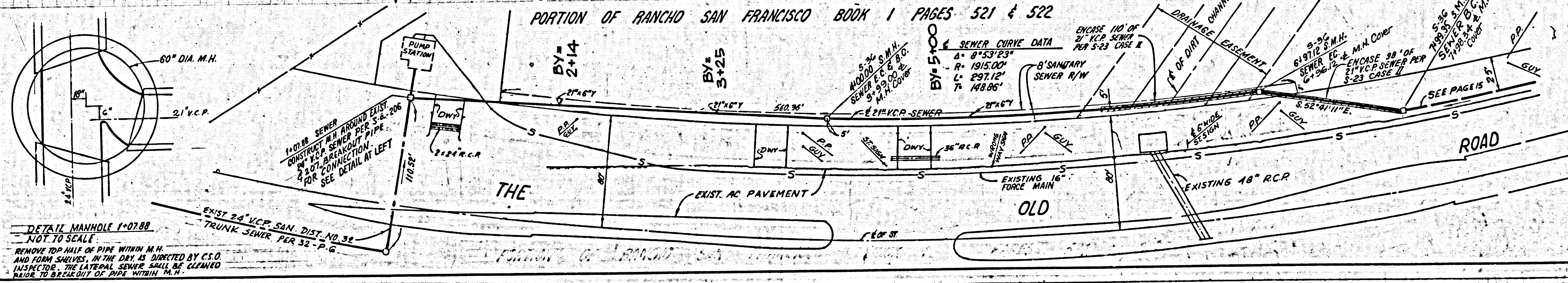
49854



SEWER CURVE DATA PORTION OF RANCHO SAN FRANCISCO BOOK 1 PAGES 521 & 522

$\Delta = 6^{\circ}53'23''$
 $R = 1916.00'$
 $L = 297.12'$
 $T = 148.85'$
 $BY = 5+00$

NO CONNECTIONS ALLOWED UNTIL AREA
 IS ANNEXED TO COUNTY SANITATION
 DISTRICT NO. 32



DETAIL MANHOLE 1-07.88
 NOT TO SCALE
 REMOVE TOP HALF OF PIPE WITHIN M.H.
 AND FORM SHOVELS, IN THE DRY, AS DIRECTED BY C.S.O.
 INSPECTOR. THE LATERAL SEWER SHALL BE CLEANED
 MADE TO BE READY TO BE OPENED WITHIN M.H.

8 1789 29 0988 N/A