

B.L. 4236 ELEV. 1211.272
 RD. BM. TAG N. CB. AVENIDA NAVARRE
 77 E + 30 N/O INT. McBEAN PKWY
 @ N.E. COR.
 NEWHALL QUAD. 1972.

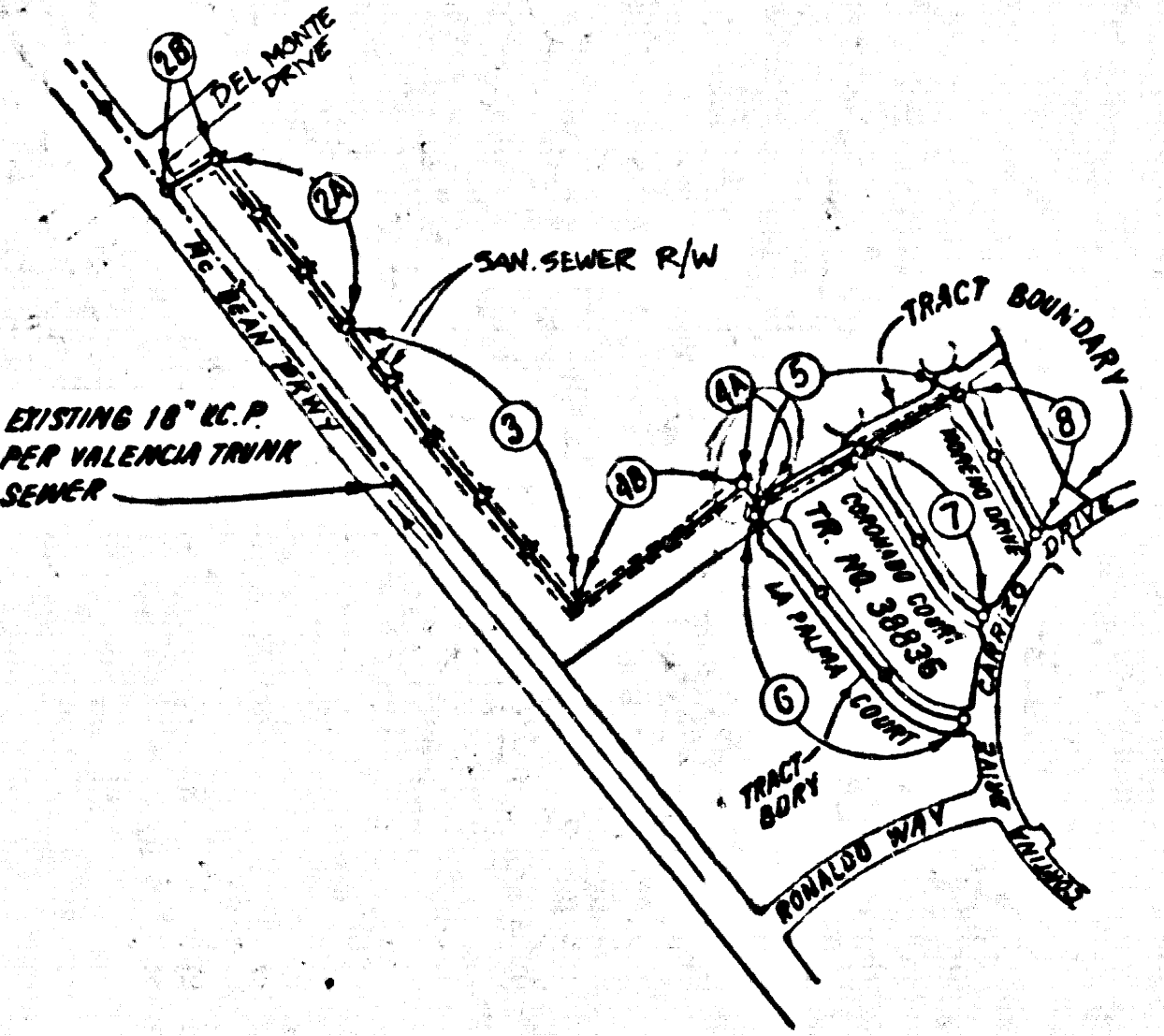
DOUBLE SCALE

REVISION:
 1. PAGE 6 - ADDED 15" 4" HOUSE LATERALS
 ON SWXY SIDE OF LA PALMA COURT
 & ADDED P.D. 1610 UNIT 1 IN
 PLAN & PROFILE.
 APPROVED: *Ralph David Daint* DATE: 3/1/81
 R.C.E. NO. 16983
 OFFICE OF THE COUNTY ENGINEER

REVISION:
 1. PAGE 1 REVISED KEY MAP
 PAGE 2 REVISED ENTIRE PAGE
 PAGE 3 REVISED ENTIRE PAGE
 PAGE 4 REVISED PLAN FROM STA. 6+881 TO 6+302
 STA. 6+881 TO 6+63.30
 REVISED PROFILE FROM STA. 6+348.3 TO 6+881
 6+63.30 TO 6+881
 PAGE 5 REVISED PLAN & PROFILE
 FROM STA. 1+00 TO STA. 1+1663
 APPROVED: *Ralph David Daint* DATE: 4/1/81
 R.C.E. NO. 16893
 OFFICE OF THE COUNTY ENGINEER

ALLOW NO CONNECTIONS UNTIL EASEMENT
 IS CLEARED.

REVISION:
 1. PAGE 243 ADDED ANGLE INFORMATION TO
 STUDS IN M.H. SHOWN ON PAGE 243
 APPROVED: *Ralph David Daint* DATE: 5/16/81
 R.C.E. NO. 16887
 OFFICE OF THE COUNTY ENGINEER



INDEX MAP
 SCALE: 1"=500'
 R.C. 9872
 TRACT NO. 38836
 NOTE:
 NUMBERS IN CIRCLES INDICATE
 PAGE NUMBERS

GENERAL NOTES:

- ELEVATIONS ARE IN FEET ABOVE U.S.C. & G.S. SEA LEVEL DATUM OF 1929.
- NO REVISIONS SHALL BE MADE IN THESE PLANS WITHOUT THE APPROVAL OF THE COUNTY ENGINEER.
- NO REPRESENTATIVE OF THE COUNTY ENGINEER WILL BE ON SITE OR LAY OUT ANY PORTION OF THE WORK.
- POINTS TO WHICH THIS IMPROVEMENT IS TO BE CONSTRUCTED ARE SHOWN ON PLANS AND PROFILES. GRADE POINTS FOR TOP OF CURVE, CENTER LINE OF STREETS, OR CENTER LINE OF ALLEYS ARE SHOWN BY CIRCLES ON PROFILES. AT ALL POINTS BETWEEN DESIGNATED POINTS THE GRADE SHALL BE ESTABLISHED SO AS TO CONFORM TO A STRAIGHT LINE BETWEEN SAID DESIGNATED POINTS.
- THE PRIVATE ENGINEER SHALL FURNISH THE COUNTY ENGINEER WITH GRADE SHEETS AND STATIONING FOR ALL HOUSE LATERALS AND "1" OR "1 1/2" BRANCHES AND SHALL PROVIDE STAKES FOR THEM AT THEIR PROPER LOCATIONS WITH STATIONING PLAINLY ALIGNED. ALL HOUSE LATERALS SHALL BE CONSTRUCTED IN A STRAIGHT ALIGNMENT AT RIGHT ANGLES FROM THE MAIN LINE SEWER EXCEPT AS SHOWN ON THE PLANS. HOUSE LATERALS FROM CHIMNEYS SHALL NOT HAVE AN ANGLE OF LESS THAN 45° WITH THE MAIN LINE SEWER. ANY CHANGE IN ALIGNMENT SHALL BE REQUESTED IN WRITING BY THE PRIVATE ENGINEER.
- THE PRIVATE ENGINEER SHALL FURNISH THE HOUSE LATERAL DEPTH AT THE PROPERTY LINE BELOW THE TOP OF CURVE STATIONING FOR EACH HOUSE LATERAL ON THE GRADE SHEET.
- IF WORK CAN BE STARTED, THE CONTRACTOR MUST OBTAIN A PERMIT TO EXCAVATE IN COUNTY STREETS FROM THE L.A. COUNTY ROAD DEPT., DISTRICT OFFICE NO. 4, AND PAY A FEE TO THE COUNTY ENGINEER, 350 S. WYOMING AVE., LOS ANGELES, TO COVER THE COST OF CONSTRUCTION INSPECTION AND RECORD PLANS.
- IF WORK IS TO BE DONE ON A STATE HIGHWAY, A PERMIT MUST BE OBTAINED FROM THE STATE OF CALIFORNIA, DIVISION OF HIGHWAYS, 120 SOUTH SPRING STREET, LOS ANGELES, CALIFORNIA.
- APPROVAL OF THIS PLAN BY THE COUNTY OF LOS ANGELES DOES NOT CONSTITUTE A REPRESENTATION AS TO THE ACCURACY OF THE LOCATION OF OR THE EXISTENCE OR NON-EXISTENCE OF ANY UNDERGROUND UTILITY PIPE, OR STRUCTURE WITHIN THE LIMITS OF THIS PROJECT. THIS NOTE APPLIES TO ALL PAGES.
- REFER TO SECTION 7-34.4.1 OF THE STANDARD SPECIFICATIONS, REGARDING SAFETY CONES.
- PRIOR TO THE ISSUANCE OF THE REQUIRED SENIOR CONSTRUCTION PERMIT THE CONTRACTOR SHALL OBTAIN AND FILE WITH THE COUNTY ENGINEER COPIES OF A PERMIT TO EXCAVATE IN COUNTY STREETS FROM THE LOS ANGELES COUNTY ROAD DEPARTMENT, A PERMIT FOR EXCAVATIONS AND TRENCHES FROM THE STATE OF CALIFORNIA, DIVISION OF INDUSTRIAL SAFETY AND CERTIFICATE OF WORKERS COMPENSATION INSURANCE WITH THE DEPARTMENT OF COUNTY ENGINEER, 550 SOUTH WYOMING, R.M. 106 LOS ANGELES, CALIFORNIA 90020, NAMED AS THE CERTIFICATE HOLDER TO BE NOTIFIED 30 DAYS PRIOR TO CANCELLATION OF POLICY.

CONSTRUCTION NOTES:

- WORK SHALL BE CONSTRUCTED ACCORDING TO THE STANDARD SPECIFICATIONS FOR PUBLIC WORKS CONSTRUCTION (1980 EDITION) AND COUNTY ENGINEER SPECIAL PROVISIONS FOR THE CONSTRUCTION OF SANITARY SEWERS AND SHALL BE PROCEEDED ONLY IN THE PRESENCE OF THE COUNTY ENGINEER.
- THE CONTRACTOR SHALL NOTIFY THE A.H.C. DIVISION BY TELEPHONE, 738-2158, AT LEAST TWENTY-FOUR HOURS BEFORE STARTING ANY WORK UNDER THIS CONTRACT.
- HOUSE LATERALS TO BE CONSTRUCTED WITH INVERTS AT PROPERTY LINE & FEET BELOW CURB GRADE EXCEPT AS NOTED.
- PIPE OR THE BRANCHES MAY BE USED FOR CONNECTIONS TO MAINLINE SEWERS EXCEPT AS NOTED.
- ALL STRUCTURES SHALL BE EITHER BRICK MANHOLES PER S-3 OR PRECAST CONCRETE MANHOLES PER S-3A, EXCEPT AS NOTED.
- PROVIDE STAKES ON THE PROPERTY LINE OR PROPERTY LINES PRODUCE AT RIGHT ANGLES TO THE SEWER LINE AT THE CENTER LINE OF EACH MANHOLE.
- MANHOLES FOR UNIMPROVED RIGHTS OF WAY TO BE SIX INCHES ABOVE FINISHED GRADE.
- WITHIN CURB FIVE FEET OF THE SEWER, THE SEWER SHALL BE ENCASED, PER S-23, CASE 2, TWO FEET ON EACH SIDE FROM THE POINT OF INTERFERENCE.
- IF DURING THE COURSE OF CONSTRUCTION IT IS DETERMINED THAT THERE IS LESS THAN FOUR FEET OF COVER OVER THE TOP OF A MAIN LINE OR HOUSE LATERAL V.C.P. SEWER WHICH IS NOT INDICATED ON THE PLANS, THE PIPE SHALL BE ENCASED PER S-23, CASE 2, UNLESS OTHERWISE APPROVED BY THE COUNTY ENGINEER.
- ALL JOINTS BETWEEN CAST IRON PIPE AND VITRIFIED CLAY PIPE SHALL BE MADE WITH A RUBBER ELBOW JOINT, TYPE "C" OR "D". FIFTEEN MINIMUM IF NECESSARY PER STANDARD SPECIFICATIONS, SECTION 380.2.
- SEWERS TO BE TESTED FOR LEAKAGE PER SECTION 380.1 OF THE STANDARD SPECIFICATIONS AND SPECIAL PROVISIONS.
- RESURFACE ALL TRENCHES WITHIN PAVED AREAS TO MEET L.A. COUNTY ROAD DEPT. OR CALIFORNIA STATE HIGHWAY REQUIREMENTS IN ACCORDANCE WITH PERMITS.
- FULL COMPLIANCE WITH SECTION 380.1 OF THE SPECIAL PROVISIONS WILL BE REQUIRED FOR BACKFILL IN STREETS. CERTIFICATION OF BACKFILL COMPACTION AND SAND EQUIVALENTS BY A QUALIFIED, REGISTERED TESTING LABORATORY SHALL BE PROVIDED BY THE PERMITTEE PRIOR TO THE RESUMPTION OF A CERTIFICATE OF PARTIAL ACCEPTANCE.
- SPECIAL BACKFILL IN EXISTING CONSTRUCTION: (A) EXISTING TRENCH AND REPLACE OTHER EARTH SO AS TO REHABILITATE THE NATURAL OR FINISHED GRADES AND SLOPES SHOWN ON THE SLOPING PLAN APPROVED FOR THE DEVELOPMENT BY THE BUILDING AND SAFETY DIVISION; (B) ALL BACKFILL AND SAND REPLACED SHALL BE COMPACTED TO A MINIMUM OF 90% OF MAXIMUM DENSITY PER A.S.T.M. 292 METHOD OF TEST; (C) IF A LOWER ACCEPTABLE CERTIFICATION OF SUCH COMPACTION SHALL BE SUBMITTED TO THE ENVIRONMENTAL DEVELOPMENT DIVISION.

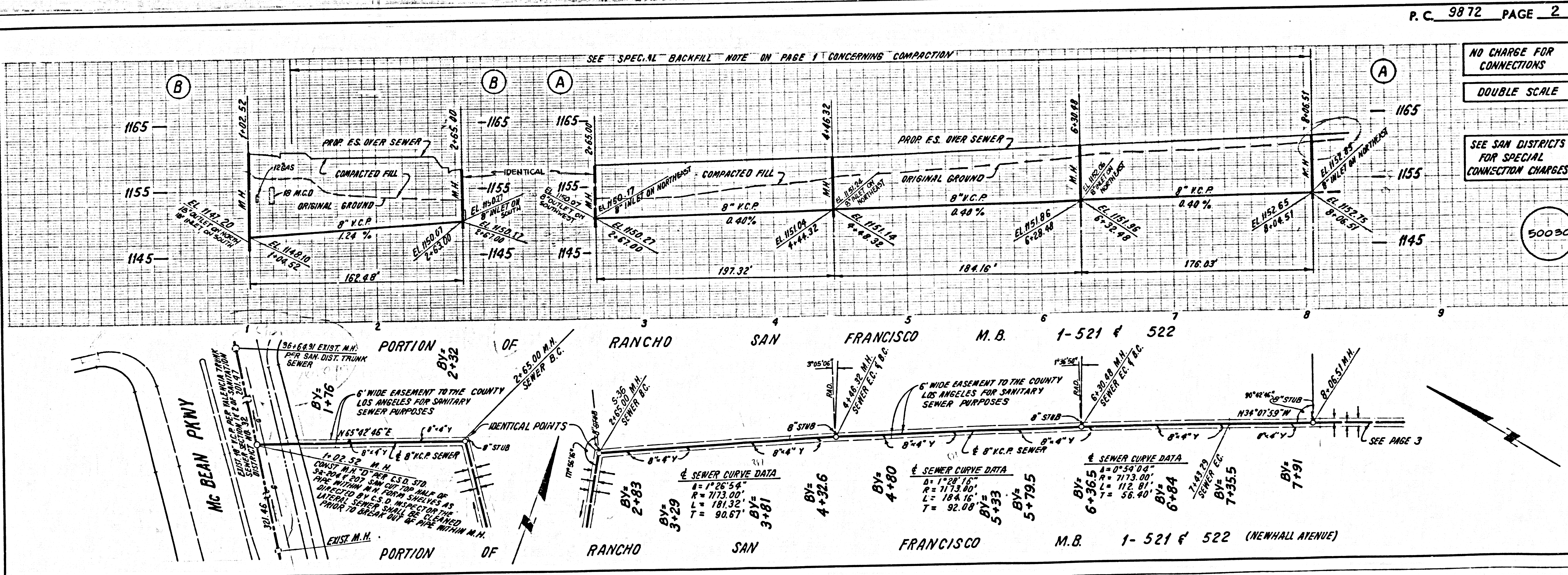
PROFILE, ALIGNMENT AND GRADE OF
SANITARY SEWERS PAGE 1
 TO BE CONSTRUCTED IN
TRACT NO 38836
PRIVATE CONTRACT NO. 9872

W.S. 62
 4 SHEETS, 8 PAGES
 SCALE: 1"=8'
 1"=40' FEBRUARY 3, 1981
 PREPARED IN THE OFFICES OF
 SIK AND ENGINEERING ASSOCIATES
 15230 BURBANK BLVD., VAN NUYS
 CALIFORNIA 91411 B13 787-8550
 BY: *Norah C. Lamy*
 REG. C.E. No. 21833

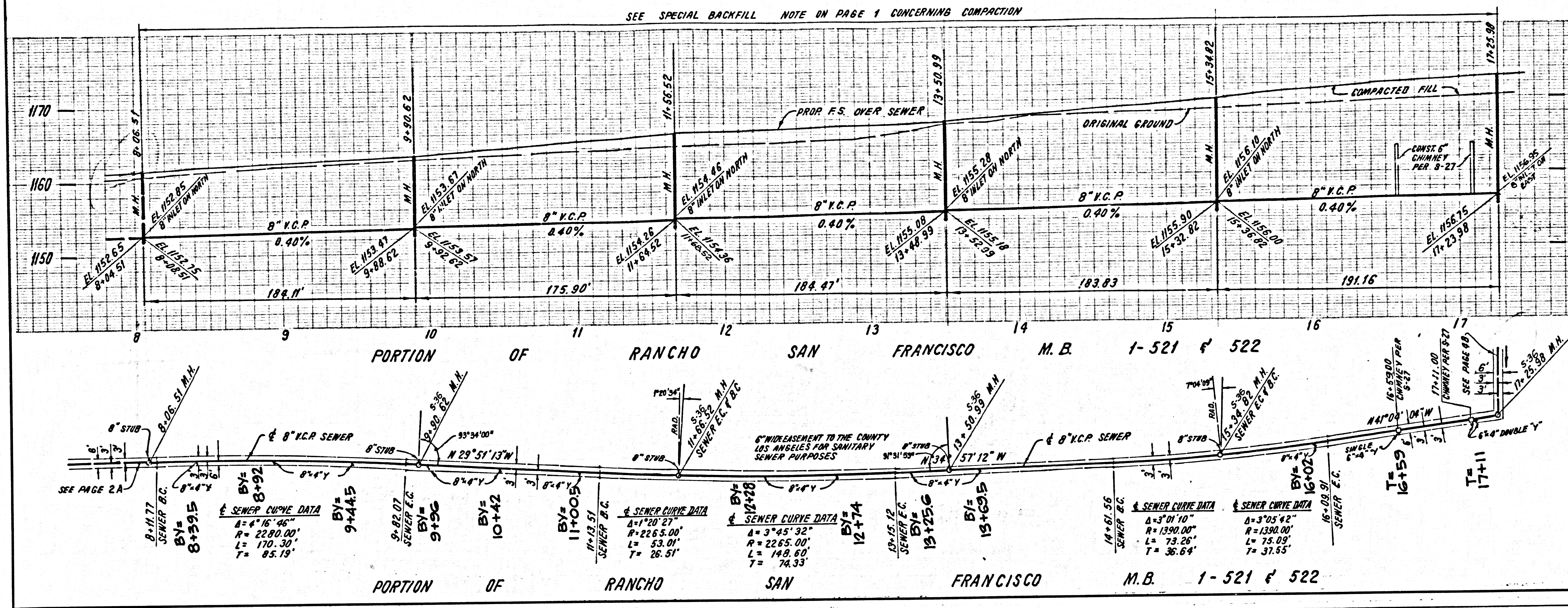
THE FOLLOWING LATEST REVISED STANDARD PLANS ON FILE IN THE OFFICE OF THE COUNTY ENGINEER SHALL APPLY IN THE CONSTRUCTION OF THIS PROJECT.

ROADS	0-1
MINIMUM PUBLIC SAFETY REQUIREMENTS	0-2
BRICK MANHOLES	0-3
STANDARD MANHOLE STOP	0-4
SEWERING FOR STEEP PIPE	0-5
CHANGING AND ENCASEMENT	0-6
WTS OR THE SUPPORT	0-7
ALLOWABLE TRENCH WIDTHS	0-8
WORKING MANHOLE FRAME AND COVER	0-9
NON-REINFORCED PRECAST CONCRETE MANHOLES	0-10

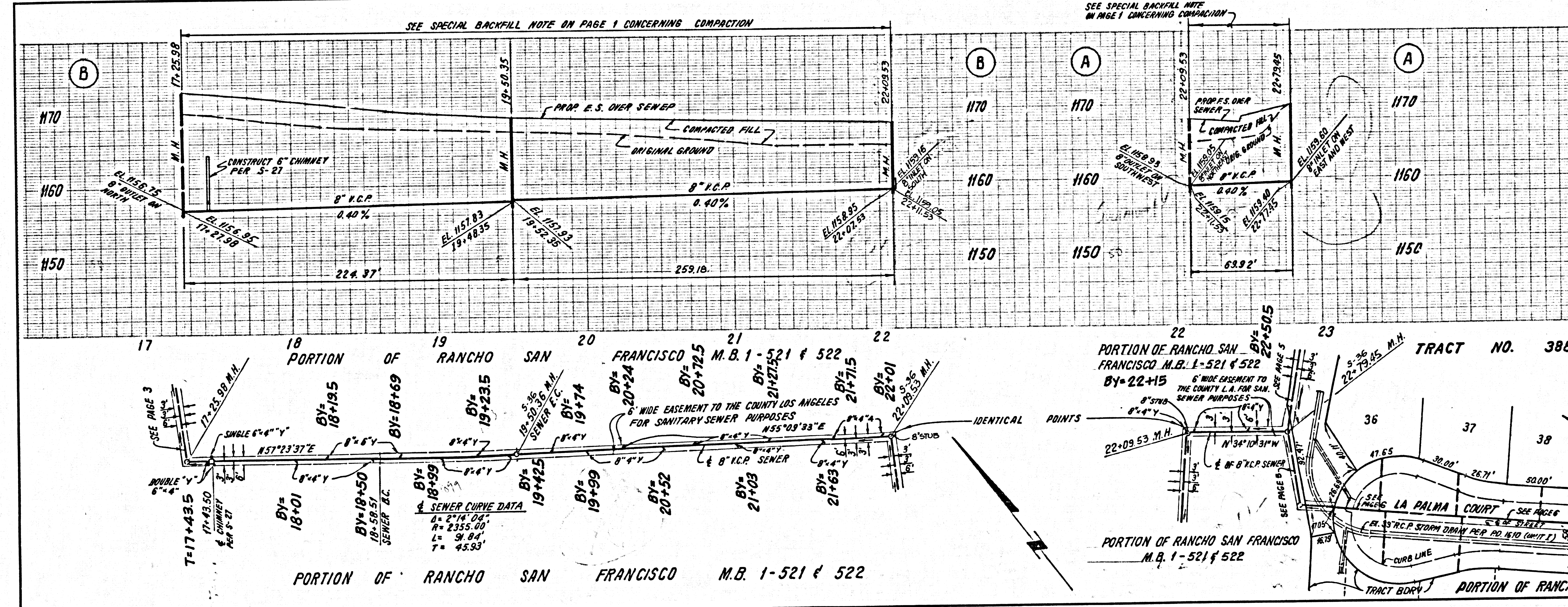
COUNTY OF LOS ANGELES, CALIFORNIA
 STEPHEN J. KNOX, COUNTY ENGINEER
 WALTER E. GARRISON, CHIEF ENGINEER
 APPROVED: *Walter E. Garrison* 2-24-81
 CHECKED: *Ralph David Daint* 2/23/81
 REG. C.E. NO. 16793
 SANTA CLARITA BLDG. DIST. 9.2



NO CHARGE FOR CONNECTIONS
 DOUBLE SCALE
 SEE SAN DISTRICTS FOR SPECIAL CONNECTION CHARGES
 50030



NO CHARGE FOR CONNECTIONS
 DOUBLE SCALE
 SEE SAN DISTRICTS FOR SPECIAL CONNECTION CHARGES
 50031



NO CHARGE FOR CONNECTIONS
 DOUBLE SCALE
 SEE SAN DISTRICTS FOR SPECIAL CONNECTION CHARGES
 50032

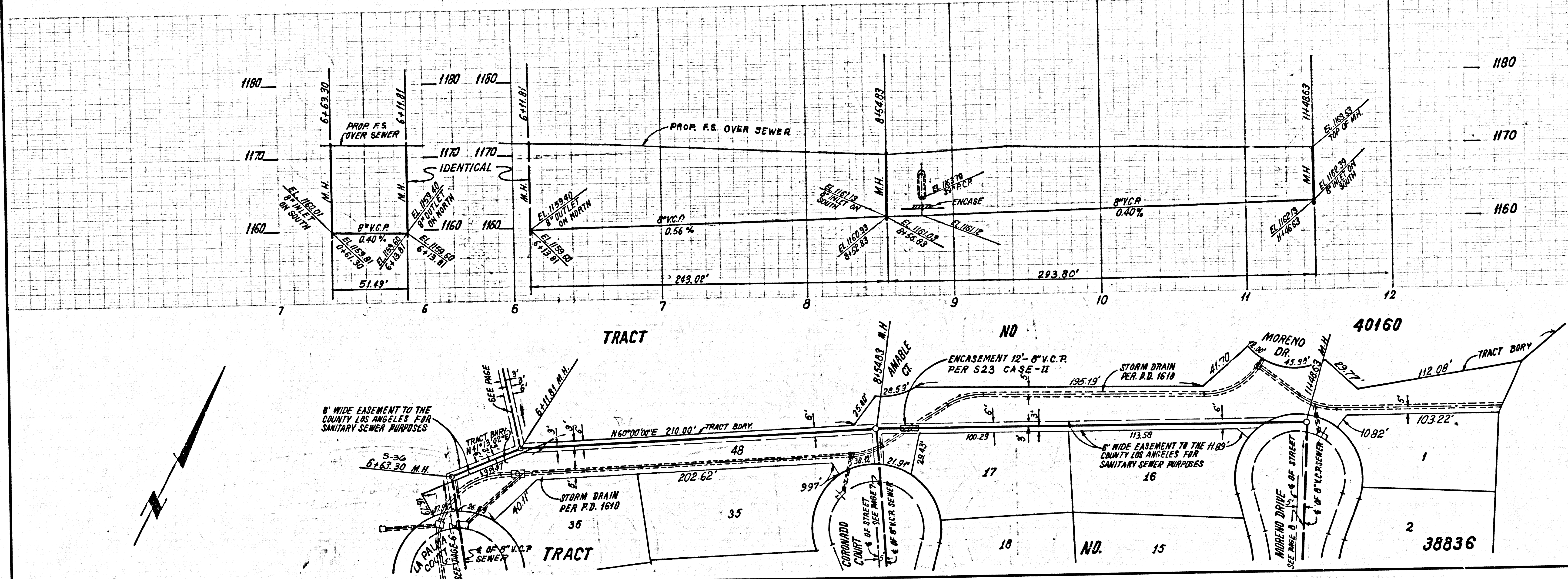
SEE SPECIAL BACKFILL NOTE 15 ON PAGE 1 CONCERNING COMPACTION

NO CHARGE FOR CONNECTION

DOUBLE SCALE

50033

SEE SAN. DISTRICTS FOR SPECIAL CONNECTION CHARGES

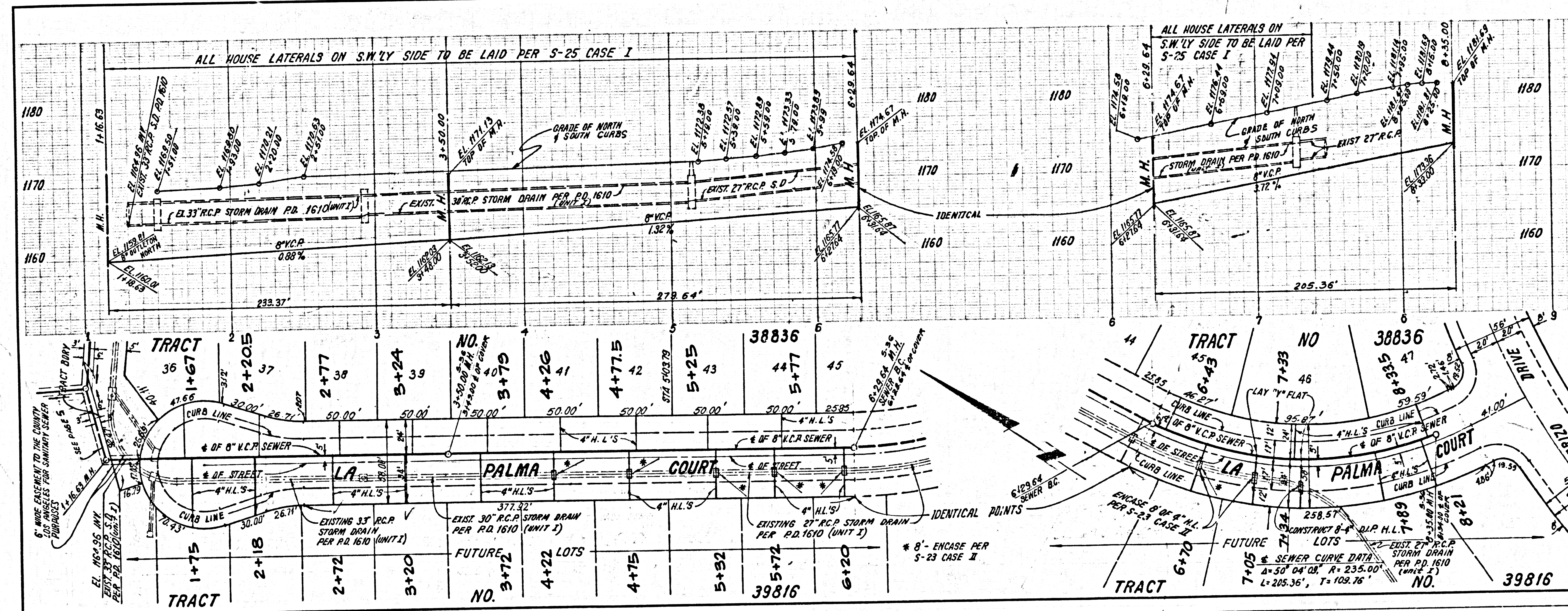


NO CHARGE FOR CONNECTIONS

DOUBLE SCALE

50034

SEE SAN. DISTRICTS FOR SPECIAL CONNECTION CHARGES

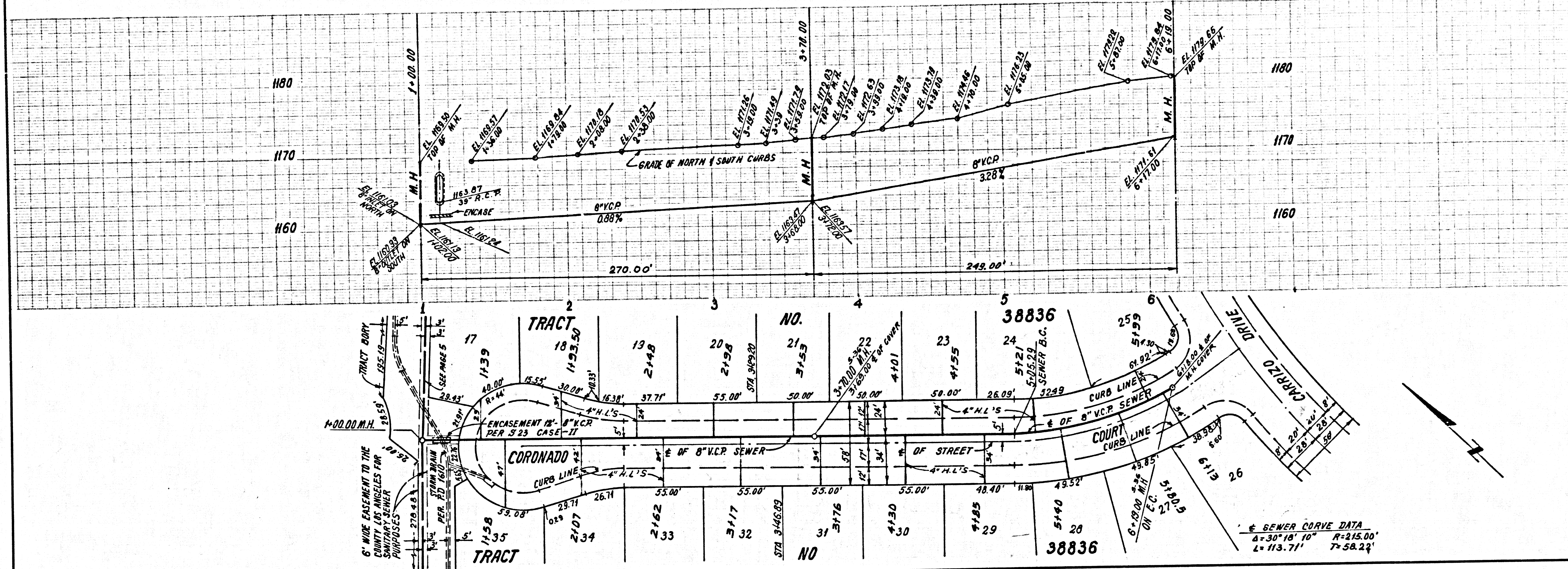


NO CHARGE FOR CONNECTIONS

DOUBLE SCALE

SEE SAN. DISTRICTS FOR SPECIAL CONNECTION CHARGES

50035



NO CHARGE FOR CONNECTIONS

DOUBLE SCALE

SEE SAN. DISTRICTS FOR SPECIAL CONNECTION CHARGES

50036

